



Kerr-McGee Oil & Gas Onshore LP

A subsidiary of Anadarko Petroleum Corporation

1099 18th Street
Denver, CO 80202
720-929-6000

March 28, 2019

Jeff Robbins
Director, Colorado Oil and Gas Conservation Commission
Department of Natural Resources
The Chancery Building
1120 Lincoln Street, Suite 801
Denver, CO 80203

Re: 30 Day Certification Letter - 318A.e

JODSTER NORTH 25-3HZ (Doc No. 401912933)

Township 5 North, Range 68 West

Section 25: SENE

Unit Acreage: 800 Acres

Proposed Spacing Unit:

05N67W SEC 19: S2S2;

05N67W SEC 20: S2S2;

05N67W SEC 21: SWSW;

05N67W SEC 28: NWNW;

05N67W SEC 29: N2N2;

05N67W SEC 30: N2N2;

05N68W SEC 24: SESE;

05N68W SEC 25: NENE

Larimer County, Colorado

Dear Director Robbins:

Kerr-McGee Oil and Gas Onshore LP ("KMG") hereby certifies that a thirty (30) day notice has been given by certified mail to all mineral owners in the proposed wellbore spacing unit. We have not received any objections to such well location, proposed spacing unit, or additional producing formation. KMG hereby respectfully requests approval of this boundary well.

If you have any questions or issues regarding this permit, please contact me at (720) 929-3094.

Sincerely,

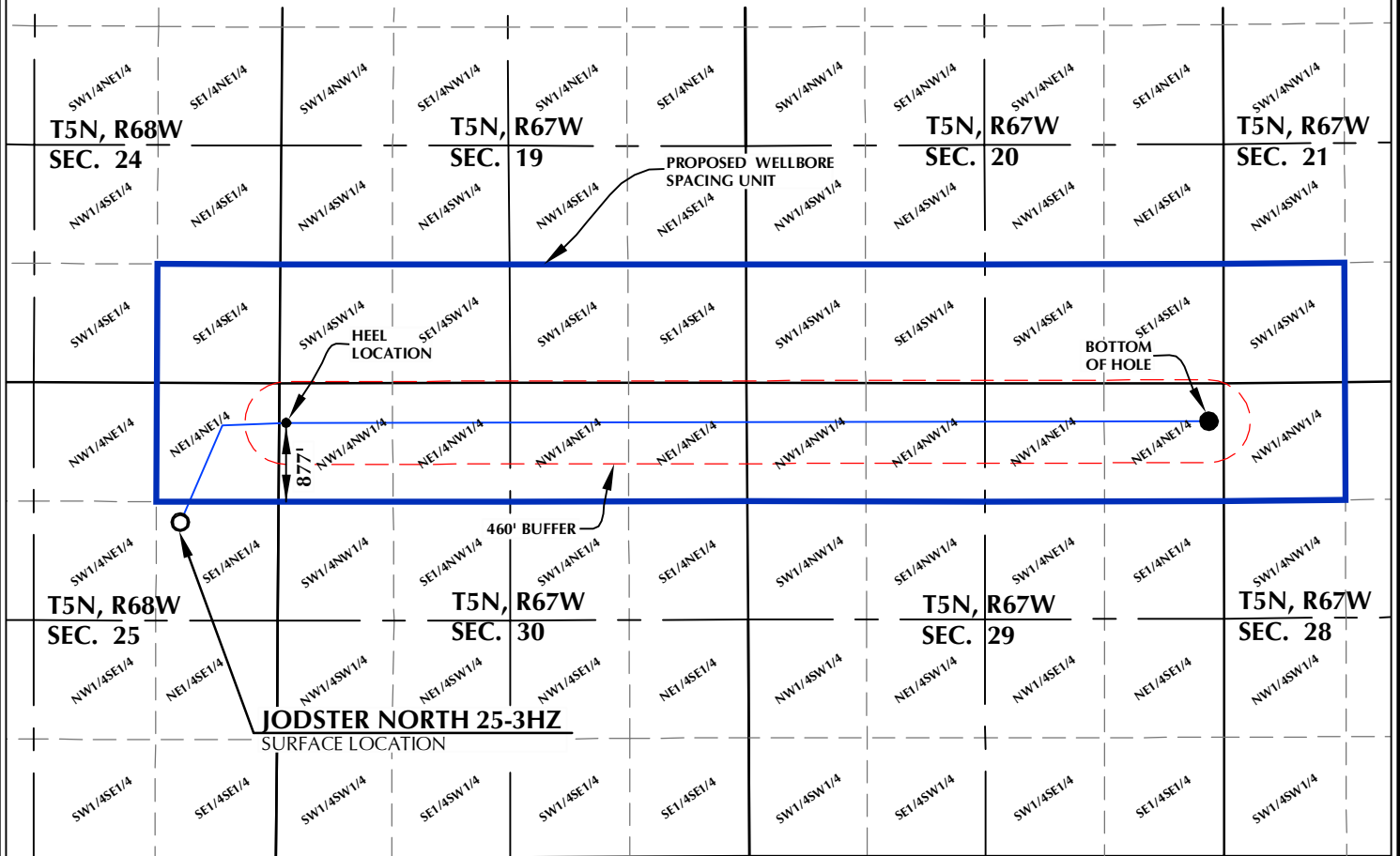
Kerr-McGee Oil and Gas Onshore LP

John Piekara
Sr. Regulatory Analyst

Enclosure

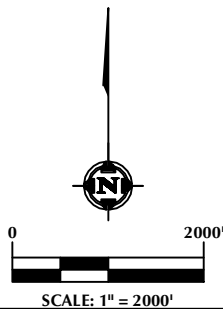
DISTANCE FROM COMPLETED
PORTION OF WELLBORE TO
NEAREST UNIT BOUNDARY= 877'

JODSTER NORTH 25-3HZ WELLBORE SPACING UNIT



NOTES:

1. DRAWING LATITUDE AND LONGITUDE COORDINATES ARE NAD 83 (2011)(EPOCH:2010).
2. ELEVATION BASED ON NAVD88 (GEOID12B).
3. BASIS OF BEARING DERIVED FROM COLORADO COORDINATE SYSTEM OF 1983 NORTH ZONE.
4. ALL MEASURED DISTANCES ARE GRID.
COMBINED SCALE FACTOR: .99972964 CALCULATED FROM THE E. 1/4 CORNER OF SECTION 25, T5N, R68W.



SURFACE LOCATION: NAD 83
GROUND ELEVATION= 4861.0'
LATITUDE= 40.373802°
LONGITUDE= -104.949091°
LATITUDE= 40°22'25.687"
LONGITUDE= -104°56'56.729"
HEEL LOCATION: NAD 83
LATITUDE= 40.376809°
LONGITUDE= -104.944851°
LATITUDE= 40°22'36.511"
LONGITUDE= -104°56'41.463"
BOTTOM HOLE LOCATION: NAD 83
LATITUDE= 40.376678°
LONGITUDE= -104.908094°
LATITUDE= 40°22'36.041"
LONGITUDE= -104°54'29.138"

WELL PAD - JODSTER NORTH 8-25HZ

JODSTER NORTH 25-3HZ
WELLBORE SPACING UNIT
1548' FNL & 1092' FEL SENE (SURFACE)
LOCATED IN SECTION 25, T5N, R68W, 6TH P.M.
LARIMER COUNTY, COLORADO
441' FNL & 75' FWL LOT 2 (NWNW) (HEEL)
LOCATED IN SECTION 30
420' FNL & 160' FEL NENE (BOTTOM)
LOCATED IN SECTION 29, T5N, R67W, 6TH P.M.
WELD COUNTY, COLORADO

**Kerr-McGee Oil &
Gas Onshore L.P.**
1099 18th Street
Denver, Colorado 80202



CONSULTING, LLC

SHERIDAN OFFICE
1095 Saberton Avenue
Sheridan, Wyoming 82801
Phone 307-674-0609

LOVELAND OFFICE
6706 North Franklin Avenue
Loveland, Colorado 80538
Phone 970-776-4331

DRAFTED BY:	LMO	CHECKED BY:	RKF
DATE DRAFTED:	9/20/18	DATE SURVEYED:	9/3/18
REVISED:		FILE NAME:	16-95