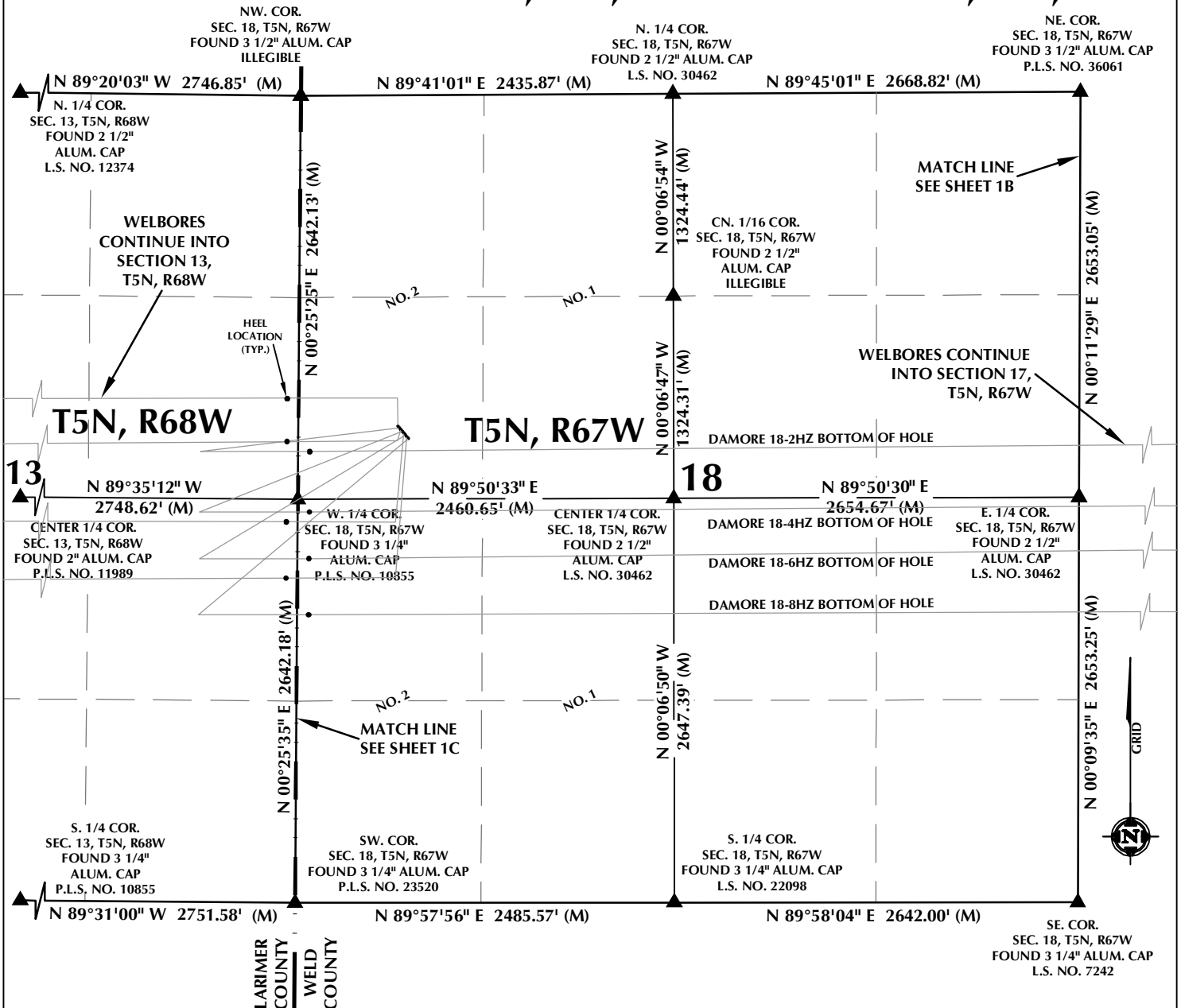


# MULTI-WELL PLAN SECTION 13, T5N, R68W & SECTION 18, T5N, R67W



**WELL NOTES:**

**DAMORE 18-1HZ**  
 SURFACE: 2167' FNL, 652' FWL, SEC. 18, T5N, R67W  
 BOTTOM HOLE: 1956' FNL, 2164' FEL, SEC. 15, T5N, R68W

**DAMORE 18-2HZ**  
 SURFACE: 2178' FNL, 661' FWL, SEC. 18, T5N, R67W  
 BOTTOM HOLE: 2285' FNL, 470' FEL, SEC. 17, T5N, R67W

**DAMORE 18-3HZ**  
 SURFACE: 2190' FNL, 671' FWL, SEC. 18, T5N, R67W  
 BOTTOM HOLE: 2314' FNL, 2159' FEL, SEC. 15, T5N, R68W

**DAMORE 18-4HZ**  
 SURFACE: 2201' FNL, 681' FWL, SEC. 18, T5N, R67W  
 BOTTOM HOLE: 2590' FSL, 470' FEL, SEC. 17, T5N, R67W

**DAMORE 18-5HZ**  
 SURFACE: 2213' FNL, 691' FWL, SEC. 18, T5N, R67W  
 BOTTOM HOLE: 2562' FSL, 2156' FEL, SEC. 15, T5N, R68W

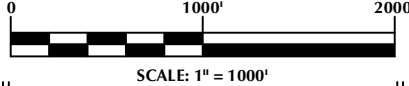
**DAMORE 18-6HZ**  
 SURFACE: 2224' FNL, 700' FWL, SEC. 18, T5N, R67W  
 BOTTOM HOLE: 2313' FSL, 471' FEL, SEC. 17, T5N, R67W

**DAMORE 18-7HZ**  
 SURFACE: 2236' FNL, 710' FWL, SEC. 18, T5N, R67W  
 BOTTOM HOLE: 2105' FSL, 2157' FEL, SEC. 15, T5N, R68W

**DAMORE 18-8HZ**  
 SURFACE: 2247' FNL, 720' FWL, SEC. 18, T5N, R67W  
 BOTTOM HOLE: 1882' FSL, 470' FEL, SEC. 17, T5N, R67W

**NOTES:**

1. ▲ INDICATES SECTION CORNER.
2. ● INDICATES CALCULATED CORNER.
3. BASIS OF BEARING DERIVED FROM COLORADO COORDINATE SYSTEM OF 1983 NORTH ZONE.
4. ALL MEASURED DISTANCES ARE GRID.
5. COMBINED SCALE FACTOR: .99972603 CALCULATED FROM THE NE. CORNER OF SECTION 18, T5N, R67W.
6. WELL FOOTAGES ARE MEASURED AT RIGHT ANGLES TO THE SECTION LINES.
7. NO. 1 & NO. 2 AS SHOWN HEREON ARE GOVERNMENT LOTS 1 & 2 PER THE ORIGINAL GLO SURVEY.



**WELL PAD - DAMORE 5-18HZ**

MULTI-WELL PLAN  
 DAMORE 18-1HZ, DAMORE 18-2HZ,  
 DAMORE 18-3HZ, DAMORE 18-4HZ, DAMORE 18-5HZ,  
 DAMORE 18-6HZ, DAMORE 18-7HZ & DAMORE 18-8HZ  
 LOCATED IN SECTIONS 17 & 18, T5N, R67W  
 WELD COUNTY, COLORADO &  
 LOCATED IN SECTIONS 13, 14 & 15  
 T5N, R68W, 6TH P.M.  
 LARIMER COUNTY, COLORADO

**Kerr-McGee Oil &  
 Gas Onshore L.P.**  
 1099 18th Street  
 Denver, Colorado 80202



**CONSULTING, LLC**

**SHERIDAN OFFICE**  
 1095 Saberton Avenue  
 Sheridan, Wyoming 82801  
 Phone 307-674-0609

**LOVELAND OFFICE**  
 6706 North Franklin Avenue  
 Loveland, Colorado 80538  
 Phone 970-776-4331

DRAFTED BY:	LMO	CHECKED BY:	RKF	SHEET NO: <b>1A</b> 1A OF 1
DATE DRAFTED:	10/8/18	DATE SURVEYED:	9/7/18	
REVISED:	1/15/19	FILE NAME:	16-54	

K:\AMADARCO\2016\54\_PROVANT\_T5N\_R67W\_SEC\_18\PLATS\DAMORE 5-18HZ.DWG 5:18Z MW.Dwg, 1/13/2019 9:15:28 PM, ethan

# MULTI-WELL PLAN SECTION 17, T5N, R67W

N. 1/4 COR.  
SEC. 17, T5N, R67W  
FOUND 3 1/4" ALUM. CAP  
ILLEGIBLE

NW. COR.  
SEC. 17, T5N, R67W  
FOUND 3 1/2" ALUM. CAP  
P.L.S. NO. 36061

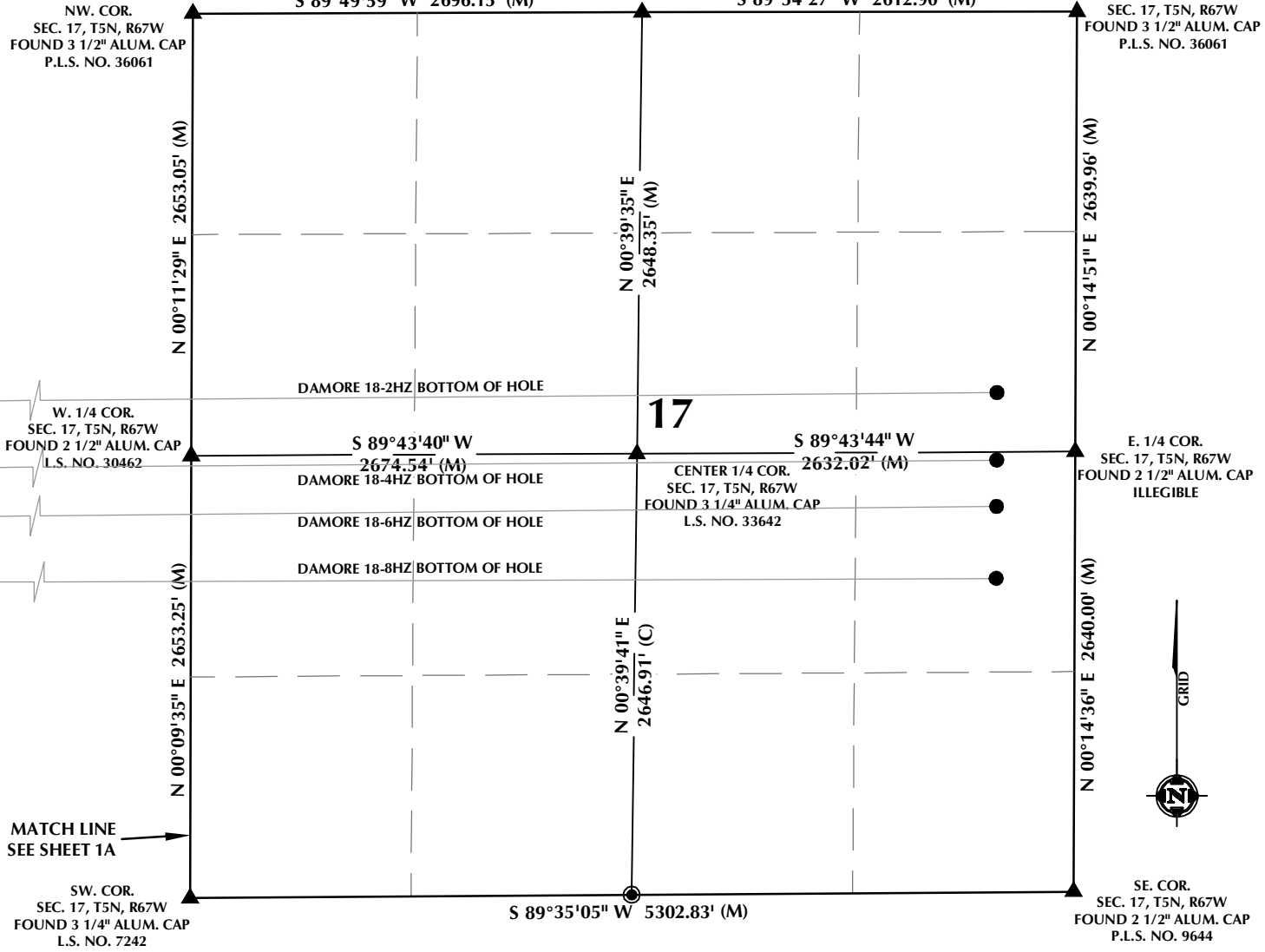
NE. COR.  
SEC. 17, T5N, R67W  
FOUND 3 1/2" ALUM. CAP  
P.L.S. NO. 36061

W. 1/4 COR.  
SEC. 17, T5N, R67W  
FOUND 2 1/2" ALUM. CAP  
L.S. NO. 30462

E. 1/4 COR.  
SEC. 17, T5N, R67W  
FOUND 2 1/2" ALUM. CAP  
ILLEGIBLE

SW. COR.  
SEC. 17, T5N, R67W  
FOUND 3 1/4" ALUM. CAP  
L.S. NO. 7242

SE. COR.  
SEC. 17, T5N, R67W  
FOUND 2 1/2" ALUM. CAP  
P.L.S. NO. 9644



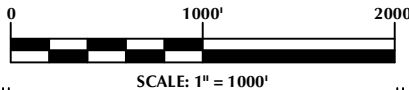
## WELL NOTES:

- DAMORE 18-1HZ  
SURFACE: 2167' FNL, 652' FWL, SEC. 18, T5N, R67W  
BOTTOM HOLE: 1956' FNL, 2164' FEL, SEC. 15, T5N, R68W
- DAMORE 18-2HZ  
SURFACE: 2178' FNL, 661' FWL, SEC. 18, T5N, R67W  
BOTTOM HOLE: 2285' FNL, 470' FEL, SEC. 17, T5N, R67W
- DAMORE 18-3HZ  
SURFACE: 2190' FNL, 671' FWL, SEC. 18, T5N, R67W  
BOTTOM HOLE: 2314' FNL, 2159' FEL, SEC. 15, T5N, R68W
- DAMORE 18-4HZ  
SURFACE: 2201' FNL, 681' FWL, SEC. 18, T5N, R67W  
BOTTOM HOLE: 2590' FSL, 470' FEL, SEC. 17, T5N, R67W

- DAMORE 18-5HZ  
SURFACE: 2213' FNL, 691' FWL, SEC. 18, T5N, R67W  
BOTTOM HOLE: 2562' FSL, 2156' FEL, SEC. 15, T5N, R68W
- DAMORE 18-6HZ  
SURFACE: 2224' FNL, 700' FWL, SEC. 18, T5N, R67W  
BOTTOM HOLE: 2313' FSL, 471' FEL, SEC. 17, T5N, R67W
- DAMORE 18-7HZ  
SURFACE: 2236' FNL, 710' FWL, SEC. 18, T5N, R67W  
BOTTOM HOLE: 2105' FSL, 2157' FEL, SEC. 15, T5N, R68W
- DAMORE 18-8HZ  
SURFACE: 2247' FNL, 720' FWL, SEC. 18, T5N, R67W  
BOTTOM HOLE: 1882' FSL, 470' FEL, SEC. 17, T5N, R67W

## NOTES:

1. ▲ INDICATES SECTION CORNER.
2. ● INDICATES CALCULATED CORNER.
3. BASIS OF BEARING DERIVED FROM COLORADO COORDINATE SYSTEM OF 1983 NORTH ZONE.
4. ALL MEASURED DISTANCES ARE GRID.
5. COMBINED SCALE FACTOR: .99972603 CALCULATED FROM THE NE. CORNER OF SECTION 18, T5N, R67W.
6. WELL FOOTAGES ARE MEASURED AT RIGHT ANGLES TO THE SECTION LINES.



## WELL PAD - DAMORE 5-18HZ

MULTI-WELL PLAN  
DAMORE 18-1HZ, DAMORE 18-2HZ,  
DAMORE 18-3HZ, DAMORE 18-4HZ, DAMORE 18-5HZ,  
DAMORE 18-6HZ, DAMORE 18-7HZ & DAMORE 18-8HZ  
LOCATED IN SECTIONS 17 & 18, T5N, R67W  
WELD COUNTY, COLORADO &  
LOCATED IN SECTIONS 13, 14 & 15  
T5N, R68W, 6TH P.M.  
LARIMER COUNTY, COLORADO

**Kerr-McGee Oil &  
Gas Onshore L.P.**  
1099 18th Street  
Denver, Colorado 80202



## CONSULTING, LLC

SHERIDAN OFFICE  
1095 Saberton Avenue  
Sheridan, Wyoming 82801  
Phone 307-674-0609

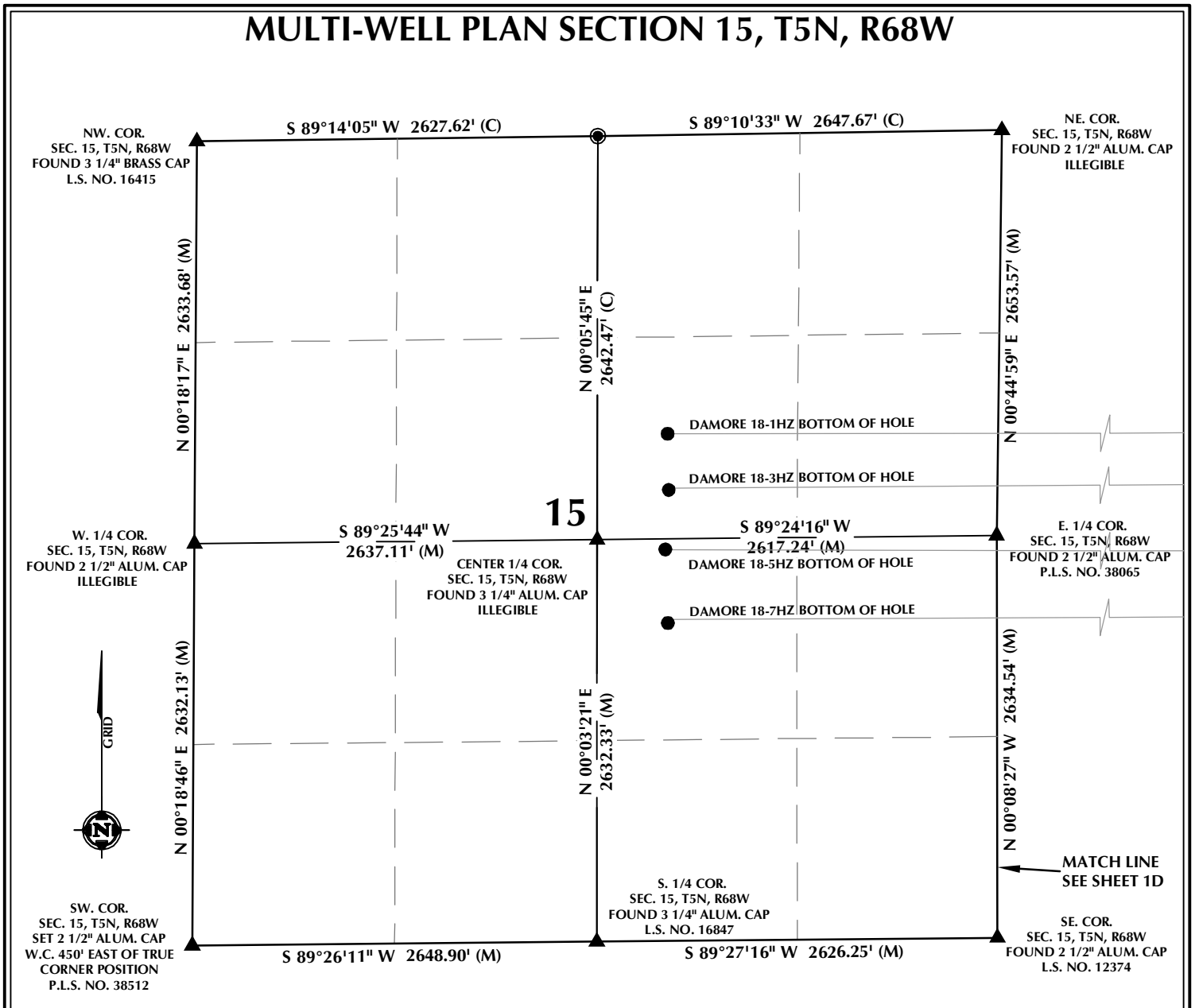
LOVELAND OFFICE  
6706 North Franklin Avenue  
Loveland, Colorado 80538  
Phone 970-776-4331

DRAFTED BY:	LMO	CHECKED BY:	RKF	SHEET NO: <b>1B</b> 1B OF 1
DATE DRAFTED:	10/8/18	DATE SURVEYED:	9/7/18	
REVISED:	1/15/19	FILE NAME:	16-54	





# MULTI-WELL PLAN SECTION 15, T5N, R68W



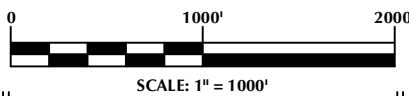
**WELL NOTES:**

- DAMORE 18-1HZ**  
SURFACE: 2167' FNL, 652' FWL, SEC. 18, T5N, R67W  
BOTTOM HOLE: 1956' FNL, 2164' FEL, SEC. 15, T5N, R68W
- DAMORE 18-2HZ**  
SURFACE: 2178' FNL, 661' FWL, SEC. 18, T5N, R67W  
BOTTOM HOLE: 2285' FNL, 470' FEL, SEC. 17, T5N, R67W
- DAMORE 18-3HZ**  
SURFACE: 2190' FNL, 671' FWL, SEC. 18, T5N, R67W  
BOTTOM HOLE: 2314' FNL, 2159' FEL, SEC. 15, T5N, R68W
- DAMORE 18-4HZ**  
SURFACE: 2201' FNL, 681' FWL, SEC. 18, T5N, R67W  
BOTTOM HOLE: 2590' FSL, 470' FEL, SEC. 17, T5N, R67W

- DAMORE 18-5HZ**  
SURFACE: 2213' FNL, 691' FWL, SEC. 18, T5N, R67W  
BOTTOM HOLE: 2562' FSL, 2156' FEL, SEC. 15, T5N, R68W
- DAMORE 18-6HZ**  
SURFACE: 2224' FNL, 700' FWL, SEC. 18, T5N, R67W  
BOTTOM HOLE: 2313' FSL, 471' FEL, SEC. 17, T5N, R67W
- DAMORE 18-7HZ**  
SURFACE: 2236' FNL, 710' FWL, SEC. 18, T5N, R67W  
BOTTOM HOLE: 2105' FSL, 2157' FEL, SEC. 15, T5N, R68W
- DAMORE 18-8HZ**  
SURFACE: 2247' FNL, 720' FWL, SEC. 18, T5N, R67W  
BOTTOM HOLE: 1882' FSL, 470' FEL, SEC. 17, T5N, R67W

**NOTES:**

1. ▲ INDICATES SECTION CORNER.
2. ● INDICATES CALCULATED CORNER.
3. BASIS OF BEARING DERIVED FROM COLORADO COORDINATE SYSTEM OF 1983 NORTH ZONE.
4. ALL MEASURED DISTANCES ARE GRID.
5. COMBINED SCALE FACTOR: .99972603 CALCULATED FROM THE NE. CORNER OF SECTION 18, T5N, R67W.
6. WELL FOOTAGES ARE MEASURED AT RIGHT ANGLES TO THE SECTION LINES.



**WELL PAD - DAMORE 5-18HZ**

MULTI-WELL PLAN  
DAMORE 18-1HZ, DAMORE 18-2HZ,  
DAMORE 18-3HZ, DAMORE 18-4HZ, DAMORE 18-5HZ,  
DAMORE 18-6HZ, DAMORE 18-7HZ & DAMORE 18-8HZ  
LOCATED IN SECTIONS 17 & 18, T5N, R67W  
WELD COUNTY, COLORADO &  
LOCATED IN SECTIONS 13, 14 & 15  
T5N, R68W, 6TH P.M.  
LARIMER COUNTY, COLORADO

**Kerr-McGee Oil &  
Gas Onshore L.P.**  
1099 18th Street  
Denver, Colorado 80202



**CONSULTING, LLC**

**SHERIDAN OFFICE**  
1095 Saberton Avenue  
Sheridan, Wyoming 82801  
Phone 307-674-0609

**LOVELAND OFFICE**  
6706 North Franklin Avenue  
Loveland, Colorado 80538  
Phone 970-776-4331

DRAFTED BY:	LMO	CHECKED BY:	RKF	SHEET NO: <b>1E</b> 1E OF 1
DATE DRAFTED:	10/8/18	DATE SURVEYED:	9/7/18	
REVISED:	1/15/19	FILE NAME:	16-54	

K:\AMADARCO\2016\16\_54\_PROVANT\_T5N\_R67W\_SEC\_18\PLATS\DAMORE 5-18HZ.DWG 1/13/2019 9:46:38 PM ethan