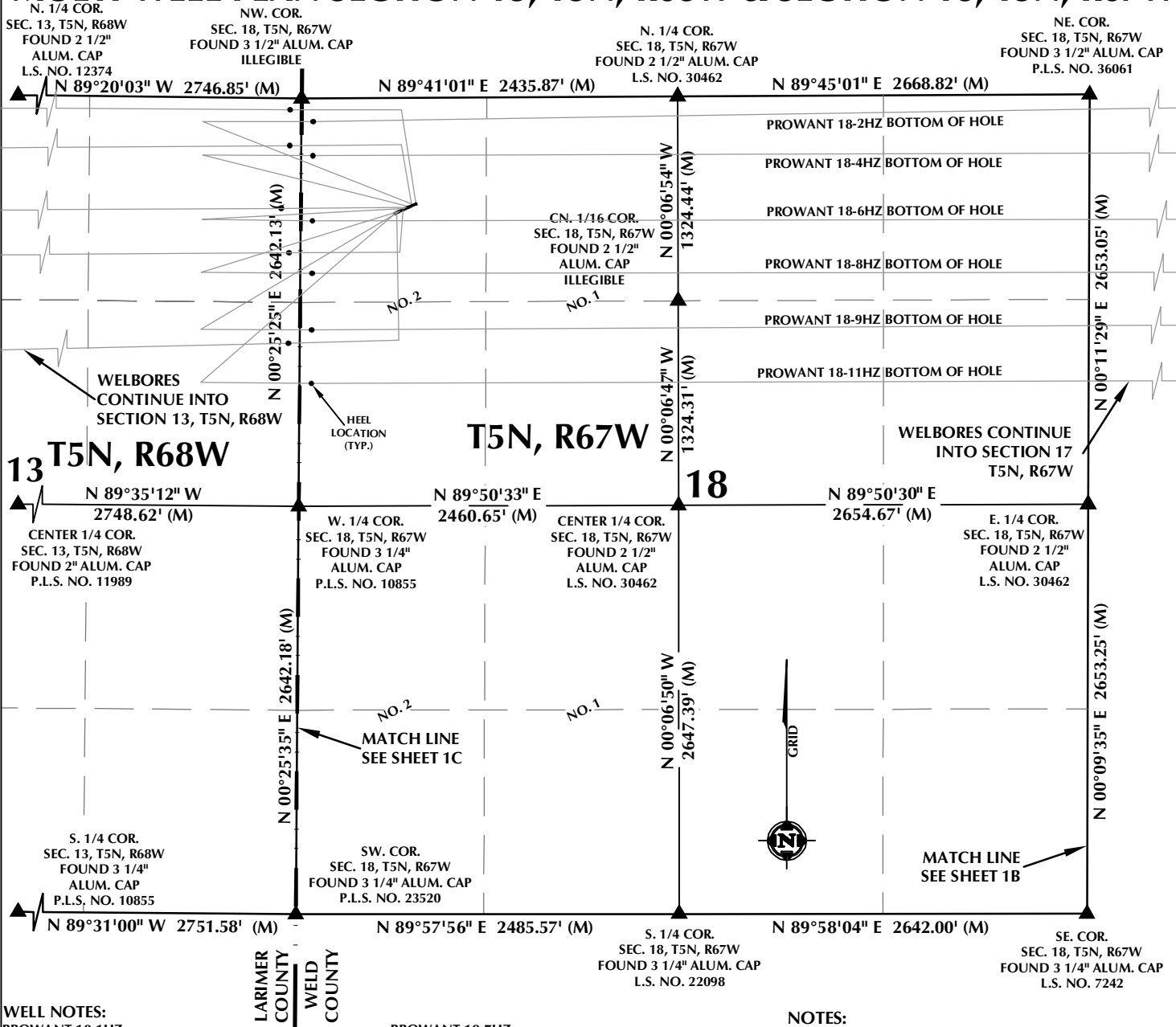


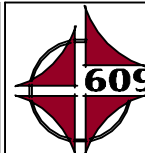
# MULTI-WELL PLAN SECTION 13, T5N, R68W & SECTION 18, T5N, R67W



## WELL PAD - PROWANT 4-18HZ

MULTI-WELL PLAN  
PROWANT 18-1HZ,  
PROWANT 18-2HZ, PROWANT 18-3HZ,  
PROWANT 18-4HZ, PROWANT 18-5HZ,  
PROWANT 18-6HZ, PROWANT 18-7HZ,  
PROWANT 18-8HZ, PROWANT 18-9HZ,  
PROWANT 18-10HZ & PROWANT 18-11HZ  
LOCATED IN SECTIONS 17 & 18, T5N, R67W  
WELD COUNTY, COLORADO &  
LOCATED IN SECTIONS 10, 13, 14 & 15, T5N, R68W, 6TH P.M.  
LARIMER COUNTY, COLORADO

**Kerr-McGee Oil &  
Gas Onshore L.P.**  
1099 18th Street  
Denver, Colorado 80202



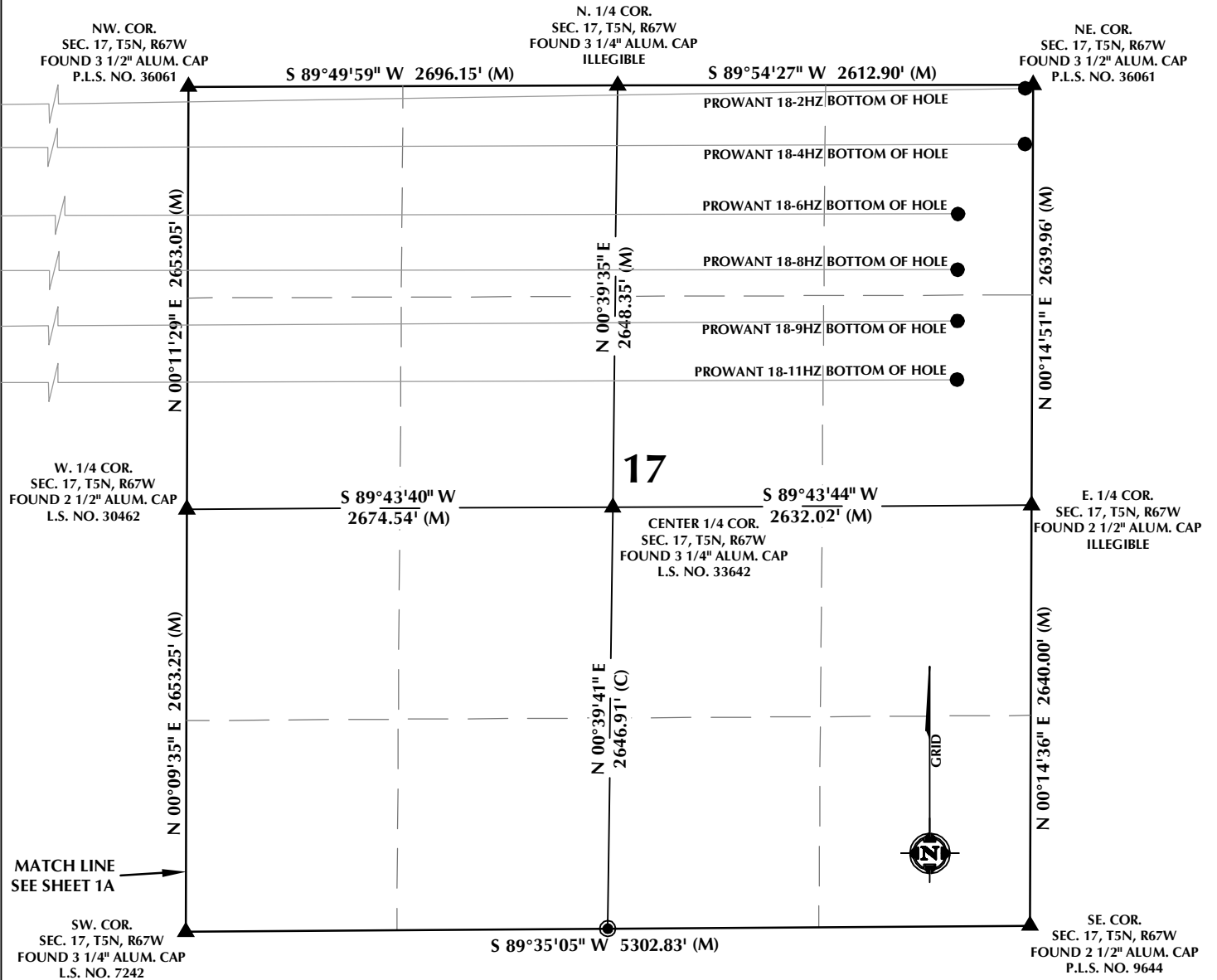
## CONSULTING, LLC

**SHERIDAN OFFICE**  
1095 Saberton Avenue  
Sheridan, Wyoming 82801  
Phone 307-674-0609

**LOVELAND OFFICE**  
6706 North Franklin Avenue  
Loveland, Colorado 80538  
Phone 970-776-4331

DRAFTED BY:	LMO	CHECKED BY:	RKF	SHEET NO:
DATE DRAFTED:	10/12/18	DATE SURVEYED:	9/7/18	<b>1A</b>
REVISED:	1/15/19	FILE NAME:	16-54	1A OF 1

# MULTI-WELL PLAN SECTION 17, T5N, R67W



## WELL NOTES:

### PROWANT 18-1HZ

SURFACE: 687' FNL, 744' FWL, SEC. 18, T5N, R67W  
BOTTOM HOLE: 51' FSL, 2593' FEL, SEC. 10, T5N, R68W

### PROWANT 18-2HZ

SURFACE: 693' FNL, 731' FWL, SEC. 18, T5N, R67W  
BOTTOM HOLE: 21' FNL, 51' FEL, SEC. 17, T5N, R67W

### PROWANT 18-3HZ

SURFACE: 699' FNL, 717' FWL, SEC. 18, T5N, R67W  
BOTTOM HOLE: 365' FNL, 2589' FEL, SEC. 15, T5N, R68W

### PROWANT 18-4HZ

SURFACE: 705' FNL, 704' FWL, SEC. 18, T5N, R67W  
BOTTOM HOLE: 372' FNL, 50' FEL, SEC. 17, T5N, R67W

### PROWANT 18-5HZ

SURFACE: 711' FNL, 690' FWL, SEC. 18, T5N, R67W  
BOTTOM HOLE: 743' FNL, 2170' FEL, SEC. 15, T5N, R68W

### PROWANT 18-6HZ

SURFACE: 717' FNL, 676' FWL, SEC. 18, T5N, R67W  
BOTTOM HOLE: 809' FNL, 470' FEL, SEC. 17, T5N, R67W

### PROWANT 18-7HZ

SURFACE: 723' FNL, 663' FWL, SEC. 18, T5N, R67W  
BOTTOM HOLE: 1042' FNL, 2171' FEL, SEC. 15, T5N, R68W

### PROWANT 18-8HZ

SURFACE: 729' FNL, 649' FWL, SEC. 18, T5N, R67W  
BOTTOM HOLE: 1159' FNL, 470' FEL, SEC. 17, T5N, R67W

### PROWANT 18-9HZ

SURFACE: 735' FNL, 635' FWL, SEC. 18, T5N, R67W  
BOTTOM HOLE: 1482' FNL, 470' FEL, SEC. 17, T5N, R67W

### PROWANT 18-10HZ

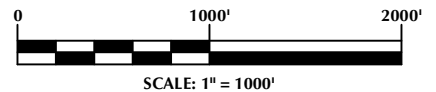
SURFACE: 741' FNL, 622' FWL, SEC. 18, T5N, R67W  
BOTTOM HOLE: 1839' FNL, 2164' FEL, SEC. 15, T5N, R68W

### PROWANT 18-11HZ

SURFACE: 747' FNL, 608' FWL, SEC. 18, T5N, R67W  
BOTTOM HOLE: 1851' FNL, 471' FEL, SEC. 17, T5N, R67W

## NOTES:

1. ▲ INDICATES SECTION CORNER.
2. ● INDICATES CALCULATED CORNER.
3. BASIS OF BEARING DERIVED FROM COLORADO COORDINATE SYSTEM OF 1983 NORTH ZONE.
4. ALL MEASURED DISTANCES ARE GRID.
5. COMBINED SCALE FACTOR: .99972603 CALCULATED FROM THE NE. CORNER OF SECTION 18, T5N, R67W.



## WELL PAD - PROWANT 4-18HZ

### MULTI-WELL PLAN

### PROWANT 18-1HZ,

PROWANT 18-2HZ, PROWANT 18-3HZ,  
PROWANT 18-4HZ, PROWANT 18-5HZ,  
PROWANT 18-6HZ, PROWANT 18-7HZ,  
PROWANT 18-8HZ, PROWANT 18-9HZ,  
PROWANT 18-10HZ & PROWANT 18-11HZ

LOCATED IN SECTIONS 17 & 18, T5N, R67W  
WELD COUNTY, COLORADO &

LOCATED IN SECTIONS 10, 13, 14 & 15, T5N, R68W, 6TH P.M.  
LARIMER COUNTY, COLORADO

**Kerr-McGee Oil &  
Gas Onshore L.P.**

1099 18th Street  
Denver, Colorado 80202



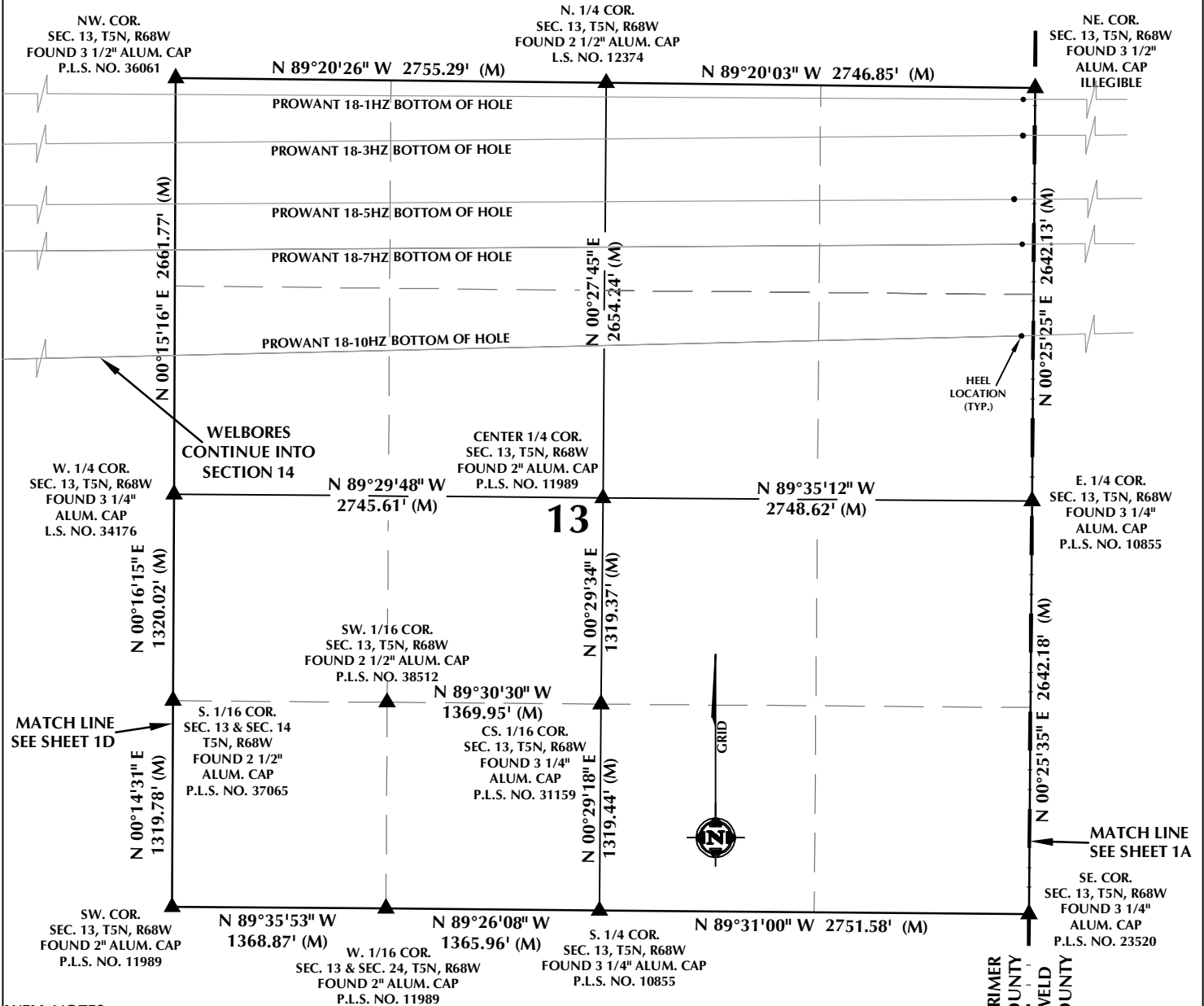
## CONSULTING, LLC

SHERIDAN OFFICE  
1095 Saberton Avenue  
Sheridan, Wyoming 82801  
Phone 307-674-0609

LOVELAND OFFICE  
6706 North Franklin Avenue  
Loveland, Colorado 80538  
Phone 970-776-4331

DRAFTED BY:	LMO	CHECKED BY:	RKF	SHEET NO:
DATE DRAFTED:	10/12/18	DATE SURVEYED:	9/7/18	<b>1B</b>
REVISED:	1/15/19	FILE NAME:	16-54	1B OF 1

# MULTI-WELL PLAN SECTION 13, T5N, R68W



## WELL NOTES:

### PROWANT 18-1HZ

SURFACE: 687' FNL, 744' FWL, SEC. 18, T5N, R67W  
BOTTOM HOLE: 51' FSL, 2593' FEL, SEC. 10, T5N, R68W

### PROWANT 18-2HZ

SURFACE: 693' FNL, 731' FWL, SEC. 18, T5N, R67W  
BOTTOM HOLE: 21' FNL, 51' FEL, SEC. 17, T5N, R67W

### PROWANT 18-3HZ

SURFACE: 699' FNL, 717' FWL, SEC. 18, T5N, R67W  
BOTTOM HOLE: 365' FNL, 2589' FEL, SEC. 15, T5N, R68W

### PROWANT 18-4HZ

SURFACE: 705' FNL, 704' FWL, SEC. 18, T5N, R67W  
BOTTOM HOLE: 372' FNL, 50' FEL, SEC. 17, T5N, R67W

### PROWANT 18-5HZ

SURFACE: 711' FNL, 690' FWL, SEC. 18, T5N, R67W  
BOTTOM HOLE: 743' FNL, 2170' FEL, SEC. 15, T5N, R68W

### PROWANT 18-6HZ

SURFACE: 717' FNL, 676' FWL, SEC. 18, T5N, R67W  
BOTTOM HOLE: 809' FNL, 470' FEL, SEC. 17, T5N, R67W

### PROWANT 18-7HZ

SURFACE: 723' FNL, 663' FWL, SEC. 18, T5N, R67W  
BOTTOM HOLE: 1042' FNL, 2171' FEL, SEC. 15, T5N, R68W

### PROWANT 18-8HZ

SURFACE: 729' FNL, 649' FWL, SEC. 18, T5N, R67W  
BOTTOM HOLE: 1159' FNL, 470' FEL, SEC. 17, T5N, R67W

### PROWANT 18-9HZ

SURFACE: 735' FNL, 635' FWL, SEC. 18, T5N, R67W  
BOTTOM HOLE: 1482' FNL, 470' FEL, SEC. 17, T5N, R67W

### PROWANT 18-10HZ

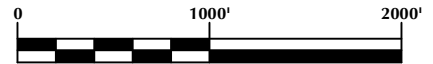
SURFACE: 741' FNL, 622' FWL, SEC. 18, T5N, R67W  
BOTTOM HOLE: 1839' FNL, 2164' FEL, SEC. 15, T5N, R68W

### PROWANT 18-11HZ

SURFACE: 747' FNL, 608' FWL, SEC. 18, T5N, R67W  
BOTTOM HOLE: 1851' FNL, 471' FEL, SEC. 17, T5N, R67W

## NOTES:

1. INDICATES SECTION CORNER.
2. INDICATES CALCULATED CORNER.
3. BASIS OF BEARING DERIVED FROM COLORADO COORDINATE SYSTEM OF 1983 NORTH ZONE.
4. ALL MEASURED DISTANCES ARE GRID.
5. COMBINED SCALE FACTOR: .99972603 CALCULATED FROM THE NE. CORNER OF SECTION 18, T5N, R67W.



SCALE: 1" = 1000'

## WELL PAD - PROWANT 4-18HZ

### MULTI-WELL PLAN

PROWANT 18-1HZ,  
PROWANT 18-2HZ, PROWANT 18-3HZ,  
PROWANT 18-4HZ, PROWANT 18-5HZ,  
PROWANT 18-6HZ, PROWANT 18-7HZ,  
PROWANT 18-8HZ, PROWANT 18-9HZ,  
PROWANT 18-10HZ & PROWANT 18-11HZ  
LOCATED IN SECTIONS 17 & 18, T5N, R67W  
WELD COUNTY, COLORADO &  
LOCATED IN SECTIONS 10, 13, 14 & 15, T5N, R68W, 6TH P.M.  
LARIMER COUNTY, COLORADO

**Kerr-McGee Oil &  
Gas Onshore L.P.**

1099 18th Street  
Denver, Colorado 80202



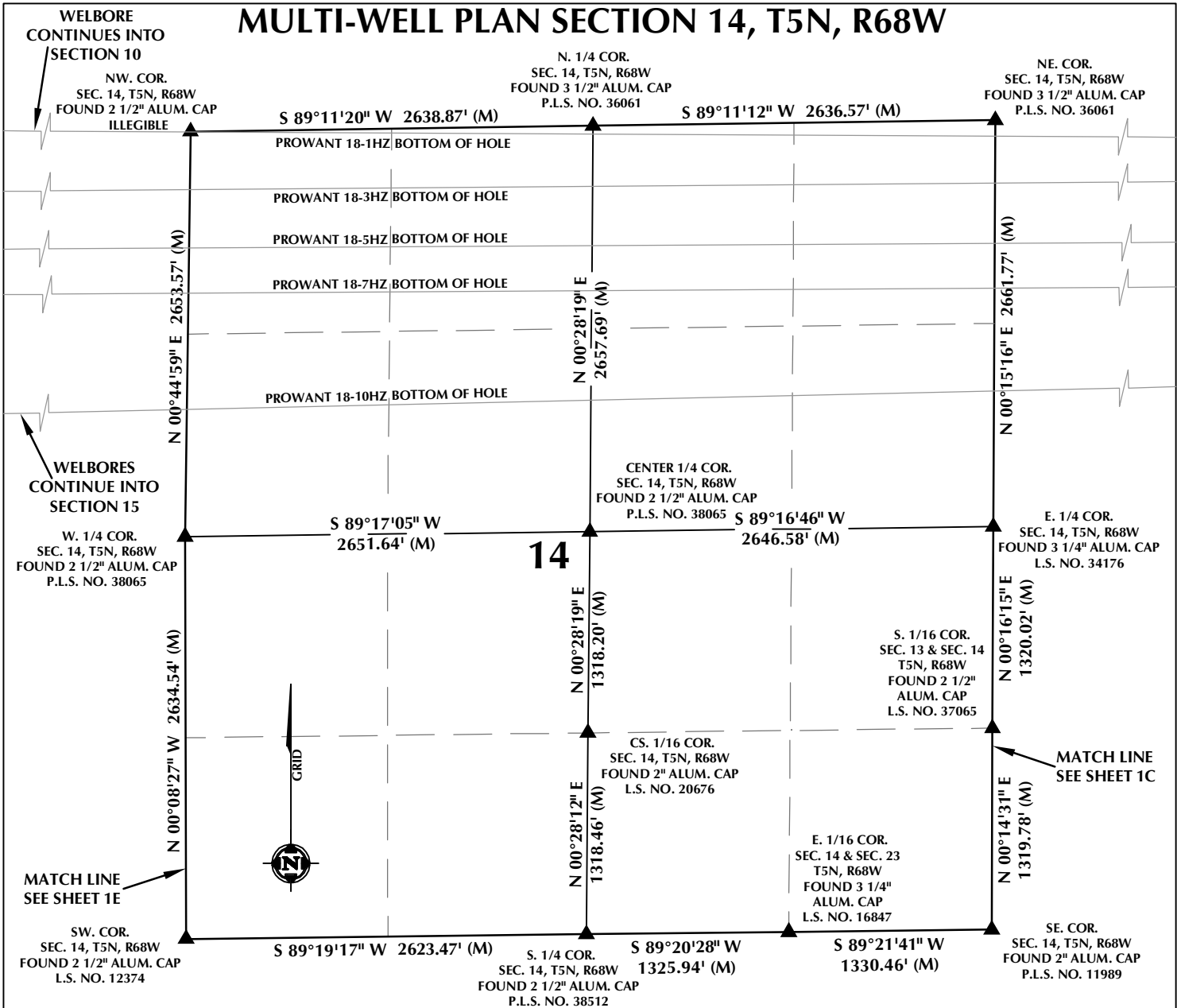
## CONSULTING, LLC

SHERIDAN OFFICE  
1095 Saberton Avenue  
Sheridan, Wyoming 82801  
Phone 307-674-0609

LOVELAND OFFICE  
6706 North Franklin Avenue  
Loveland, Colorado 80538  
Phone 970-776-4331

DRAFTED BY:	LMO	CHECKED BY:	RKF	SHEET NO:
DATE DRAFTED:	10/12/18	DATE SURVEYED:	9/7/18	1C
REVISED:	1/15/19	FILE NAME:	16-54	1C OF 1

# MULTI-WELL PLAN SECTION 14, T5N, R68W



## WELL NOTES:

### PROWANT 18-1HZ

SURFACE: 687' FNL, 744' FWL, SEC. 18, T5N, R67W  
BOTTOM HOLE: 51' FSL, 2593' FEL, SEC. 10, T5N, R68W

### PROWANT 18-2HZ

SURFACE: 693' FNL, 731' FWL, SEC. 18, T5N, R67W  
BOTTOM HOLE: 21' FNL, 51' FEL, SEC. 17, T5N, R67W

### PROWANT 18-3HZ

SURFACE: 699' FNL, 717' FWL, SEC. 18, T5N, R67W  
BOTTOM HOLE: 365' FNL, 2589' FEL, SEC. 15, T5N, R68W

### PROWANT 18-4HZ

SURFACE: 705' FNL, 704' FWL, SEC. 18, T5N, R67W  
BOTTOM HOLE: 372' FNL, 2170' FEL, SEC. 15, T5N, R68W

### PROWANT 18-5HZ

SURFACE: 711' FNL, 690' FWL, SEC. 18, T5N, R67W  
BOTTOM HOLE: 743' FNL, 2170' FEL, SEC. 15, T5N, R68W

### PROWANT 18-6HZ

SURFACE: 717' FNL, 676' FWL, SEC. 18, T5N, R67W  
BOTTOM HOLE: 809' FNL, 470' FEL, SEC. 17, T5N, R67W

### PROWANT 18-7HZ

SURFACE: 723' FNL, 663' FWL, SEC. 18, T5N, R67W  
BOTTOM HOLE: 1042' FNL, 2171' FEL, SEC. 15, T5N, R68W

### PROWANT 18-8HZ

SURFACE: 729' FNL, 649' FWL, SEC. 18, T5N, R67W  
BOTTOM HOLE: 1159' FNL, 470' FEL, SEC. 17, T5N, R67W

### PROWANT 18-9HZ

SURFACE: 735' FNL, 635' FWL, SEC. 18, T5N, R67W  
BOTTOM HOLE: 1482' FNL, 470' FEL, SEC. 17, T5N, R67W

### PROWANT 18-10HZ

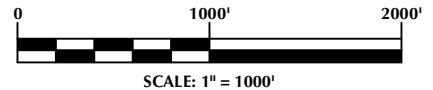
SURFACE: 741' FNL, 622' FWL, SEC. 18, T5N, R67W  
BOTTOM HOLE: 1839' FNL, 2164' FEL, SEC. 15, T5N, R68W

### PROWANT 18-11HZ

SURFACE: 747' FNL, 608' FWL, SEC. 18, T5N, R67W  
BOTTOM HOLE: 1851' FNL, 471' FEL, SEC. 17, T5N, R67W

## NOTES:

1. INDICATES SECTION CORNER.
2. INDICATES CALCULATED CORNER.
3. BASIS OF BEARING DERIVED FROM COLORADO COORDINATE SYSTEM OF 1983 NORTH ZONE.
4. ALL MEASURED DISTANCES ARE GRID.
5. COMBINED SCALE FACTOR: .99972603 CALCULATED FROM THE NE. CORNER OF SECTION 18, T5N, R67W.



## WELL PAD - PROWANT 4-18HZ

### MULTI-WELL PLAN

PROWANT 18-1HZ,  
PROWANT 18-2HZ, PROWANT 18-3HZ,  
PROWANT 18-4HZ, PROWANT 18-5HZ,  
PROWANT 18-6HZ, PROWANT 18-7HZ,  
PROWANT 18-8HZ, PROWANT 18-9HZ,  
PROWANT 18-10HZ & PROWANT 18-11HZ  
LOCATED IN SECTIONS 17 & 18, T5N, R67W  
WELD COUNTY, COLORADO &  
LOCATED IN SECTIONS 10, 13, 14 & 15, T5N, R68W, 6TH P.M.  
LARIMER COUNTY, COLORADO

**Kerr-McGee Oil &  
Gas Onshore L.P.**

1099 18th Street  
Denver, Colorado 80202



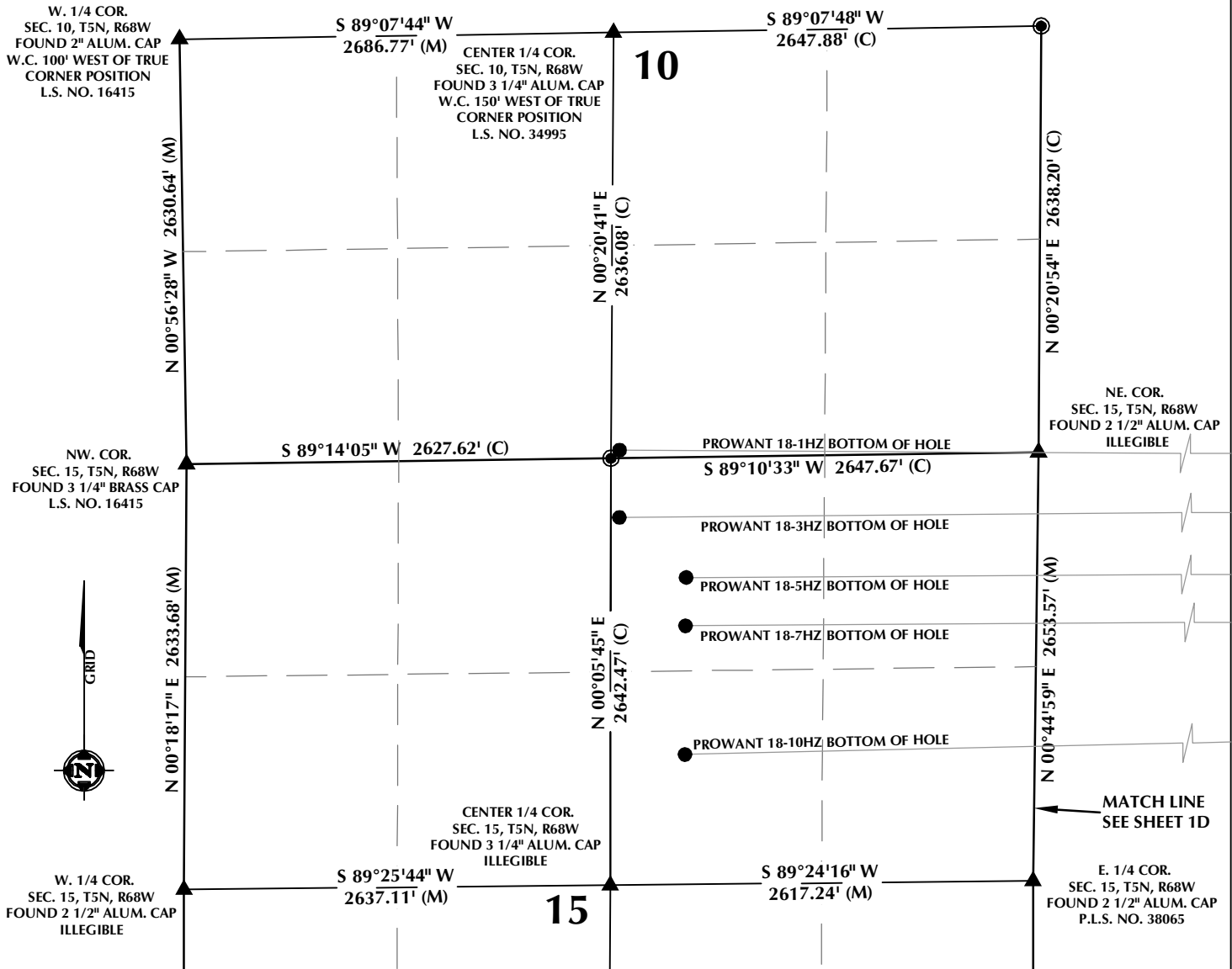
## CONSULTING, LLC

SHERIDAN OFFICE  
1095 Saberton Avenue  
Sheridan, Wyoming 82801  
Phone 307-674-0609

LOVELAND OFFICE  
6706 North Franklin Avenue  
Loveland, Colorado 80538  
Phone 970-776-4331

DRAFTED BY:	LMO	CHECKED BY:	RKF	SHEET NO:
DATE DRAFTED:	10/12/18	DATE SURVEYED:	9/7/18	1D
REVISED:	1/15/19	FILE NAME:	16-54	1D OF 1

# MULTI-WELL PLAN SECTIONS 10 & 15, T5N, R68W



## WELL NOTES:

### PROWANT 18-1HZ

SURFACE: 687' FNL, 744' FWL, SEC. 18, T5N, R67W  
BOTTOM HOLE: 51' FSL, 2593' FEL, SEC. 10, T5N, R68W

### PROWANT 18-2HZ

SURFACE: 693' FNL, 731' FWL, SEC. 18, T5N, R67W  
BOTTOM HOLE: 21' FNL, 51' FEL, SEC. 17, T5N, R67W

### PROWANT 18-3HZ

SURFACE: 699' FNL, 717' FWL, SEC. 18, T5N, R67W  
BOTTOM HOLE: 365' FNL, 2589' FEL, SEC. 15, T5N, R68W

### PROWANT 18-4HZ

SURFACE: 705' FNL, 704' FWL, SEC. 18, T5N, R67W  
BOTTOM HOLE: 372' FNL, 50' FEL, SEC. 17, T5N, R67W

### PROWANT 18-5HZ

SURFACE: 711' FNL, 690' FWL, SEC. 18, T5N, R67W  
BOTTOM HOLE: 743' FNL, 2170' FEL, SEC. 15, T5N, R68W

### PROWANT 18-6HZ

SURFACE: 717' FNL, 676' FWL, SEC. 18, T5N, R67W  
BOTTOM HOLE: 809' FNL, 470' FEL, SEC. 17, T5N, R67W

### PROWANT 18-7HZ

SURFACE: 723' FNL, 663' FWL, SEC. 18, T5N, R67W  
BOTTOM HOLE: 1042' FNL, 2171' FEL, SEC. 15, T5N, R68W

### PROWANT 18-8HZ

SURFACE: 729' FNL, 649' FWL, SEC. 18, T5N, R67W  
BOTTOM HOLE: 1159' FNL, 470' FEL, SEC. 17, T5N, R67W

### PROWANT 18-9HZ

SURFACE: 735' FNL, 635' FWL, SEC. 18, T5N, R67W  
BOTTOM HOLE: 1482' FNL, 470' FEL, SEC. 17, T5N, R67W

### PROWANT 18-10HZ

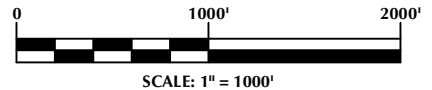
SURFACE: 741' FNL, 622' FWL, SEC. 18, T5N, R67W  
BOTTOM HOLE: 1839' FNL, 2164' FEL, SEC. 15, T5N, R68W

### PROWANT 18-11HZ

SURFACE: 747' FNL, 608' FWL, SEC. 18, T5N, R67W  
BOTTOM HOLE: 1851' FNL, 471' FEL, SEC. 17, T5N, R67W

## NOTES:

1. ▲ INDICATES SECTION CORNER.
2. ● INDICATES CALCULATED CORNER.
3. BASIS OF BEARING DERIVED FROM COLORADO COORDINATE SYSTEM OF 1983 NORTH ZONE.
4. ALL MEASURED DISTANCES ARE GRID.
5. COMBINED SCALE FACTOR: .99972603 CALCULATED FROM THE NE. CORNER OF SECTION 18, T5N, R67W.



## WELL PAD - PROWANT 4-18HZ

### MULTI-WELL PLAN

#### PROWANT 18-1HZ,

PROWANT 18-2HZ, PROWANT 18-3HZ,  
PROWANT 18-4HZ, PROWANT 18-5HZ,  
PROWANT 18-6HZ, PROWANT 18-7HZ,  
PROWANT 18-8HZ, PROWANT 18-9HZ,

PROWANT 18-10HZ & PROWANT 18-11HZ  
LOCATED IN SECTIONS 17 & 18, T5N, R67W

WELD COUNTY, COLORADO &

LOCATED IN SECTIONS 10, 13, 14 & 15, T5N, R68W, 6TH P.M.  
LARIMER COUNTY, COLORADO

**Kerr-McGee Oil &  
Gas Onshore L.P.**

1099 18th Street  
Denver, Colorado 80202



## CONSULTING, LLC

SHERIDAN OFFICE  
1095 Saberton Avenue  
Sheridan, Wyoming 82801  
Phone 307-674-0609

LOVELAND OFFICE  
6706 North Franklin Avenue  
Loveland, Colorado 80538  
Phone 970-776-4331

DRAFTED BY:	LMO	CHECKED BY:	RKF	SHEET NO:
DATE DRAFTED:	10/12/18	DATE SURVEYED:	9/7/18	<b>1E</b>
REVISED:	1/15/19	FILE NAME:	16-54	1E OF 1