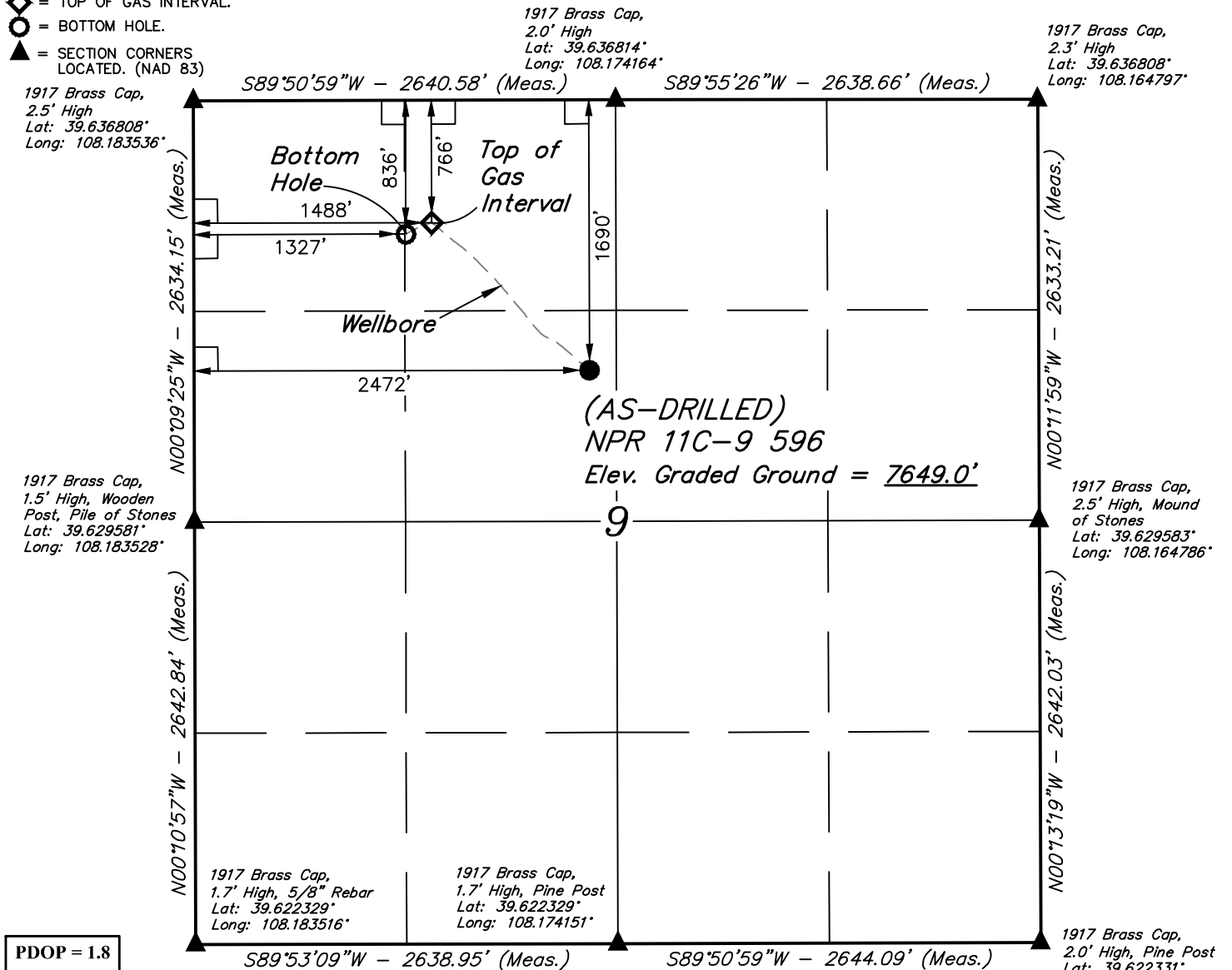


LEGEND:

- ☐ = 90° SYMBOL
- = WELLHEAD.
- ◆ = TOP OF GAS INTERVAL.
- = BOTTOM HOLE.
- ▲ = SECTION CORNERS LOCATED. (NAD 83)

T5S, R96W, 6th P.M.

NOTE:
WELLBORE DATA PROVIDED
BY Caerus Oil & Gas LLC.



PDOP = 1.8

NAD 83 (SURFACE LOCATION)
LATITUDE = 39°37'55.83" (39.632175)
LONGITUDE = 108°10'29.12" (108.174756)
NAD 27 (SURFACE LOCATION)
LATITUDE = 39°37'55.92" (39.632200)
LONGITUDE = 108°10'26.83" (108.174119)
UTM NAD 27 (ZONE 12)
N: 14404642.18 E: 2436118.41



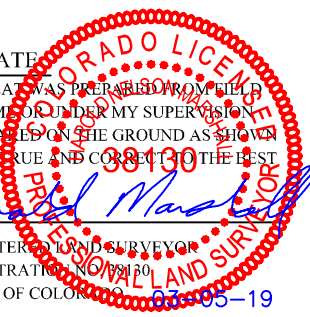
NAD 83 (TOP OF GAS INTERVAL)	NAD 83 (BOTTOM HOLE)
LATITUDE = 39°38'04.96" (39.634711)	LATITUDE = 39°38'04.26" (39.634517)
LONGITUDE = 108°10'41.70" (108.178250)	LONGITUDE = 108°10'43.77" (108.178825)
NAD 27 (TOP OF GAS INTERVAL)	NAD 27 (BOTTOM HOLE)
LATITUDE = 39°38'05.05" (39.634736)	LATITUDE = 39°38'04.35" (39.634542)
LONGITUDE = 108°10'39.41" (108.177614)	LONGITUDE = 108°10'41.47" (108.178186)
UTM NAD 27 (ZONE 12)	UTM NAD 27 (ZONE 12)
N: 14405534.31 E: 2435105.34	N: 14405458.67 E: 2434946.02

CERTIFICATE

THIS IS TO CERTIFY THAT THE ABOVE PLAT WAS PREPARED FROM FIELD NOTES OF ACTUAL SURVEYS MADE BY ME OR UNDER MY SUPERVISION AND THAT THE LOCATION HAS BEEN STATED ON THE GROUND AS SHOWN ON THE PLAT AND THAT THE SAME ARE TRUE AND CORRECT TO THE BEST OF MY KNOWLEDGE AND BELIEF.

Handwritten Signature

REGISTERED LAND SURVEYOR
REGISTRATION NO. 38190
STATE OF COLORADO 03-05-19



BASIS OF BEARINGS
BASIS OF BEARINGS IS A G.P.S. OBSERVATION

BASIS OF ELEVATION
BENCH MARK (H79) LOCATED IN THE NE 1/4 OF SECTION 35, T4S, R98W, 6th P.M., TAKEN FROM THE BULL FORK, QUADRANGLE, COLORADO, 7.5 MINUTE QUAD. (TOPOGRAPHIC MAP) PUBLISHED BY THE UNITED STATES DEPARTMENT OF THE INTERIOR, GEOLOGICAL SURVEY. SAID ELEVATION IS MARKED AS BEING 8535 FEET.



UELS, LLC
Corporate Office * 85 South 200 East
Vernal, UT 84078 * (435) 789-1017



Caerus Oil & Gas LLC

(AS-DRILLED) NPR 11C-9 596
SE 1/4 NW 1/4, SECTION 9, T5S, R96W, 6th P.M.
GARFIELD COUNTY, COLORADO

SURVEYED BY	JOHN FLOYD	02-28-19	SCALE
DRAWN BY	C.D.L.	03-01-19	1" = 1000'

AS-DRILLED WELL LOCATION PLAT