

Company: Crestone Peak Resources Operating LLC

Well: Lochbuie Land 2B-25H-D166

Field: Wattenberg

County: Weld State: Colorado

Digital Sonic Logging Tool

CBL with VDL

CBL with VDL

County:		Weld	
Field:		Wattenberg	
Location:		NWNW	
Well:		Lochbuie Land 2B-25H-D166	
Company:		Crestone Peak Resources Operating LLC	
Location:			
NWNW		Elev.:	
908 FNL 298 FWL		K.B. 5091.00 ft	
		G.L. 5078.00 ft	
		D.F. 5091.00 ft	
Permanent Datum:			
Log Measured From:		Ground Level	
Drilling Measured From:		Kelly Bushing	
API Serial No.		Elev.:	
05-123-47983		13.00 ft	
Section:		5078.00 f	
25		above Perm.Datum	
Township:			
1N			
Range:			
66			

Disclaimer

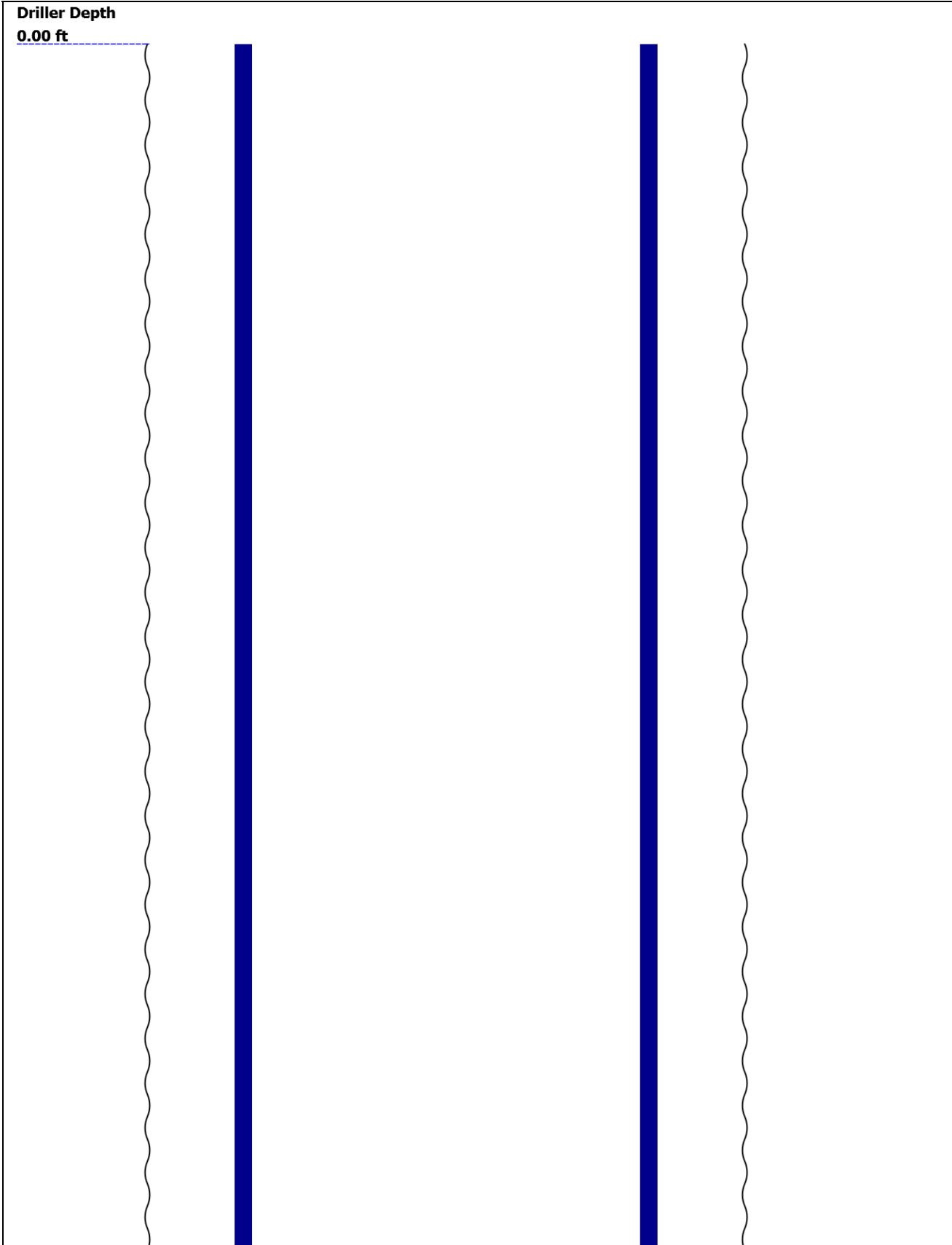
THE USE OF AND RELIANCE UPON THIS RECORDED-DATA BY THE HEREIN NAMED COMPANY (AND ANY OF ITS AFFILIATES, PARTNERS, REPRESENTATIVES, AGENTS, CONSULTANTS AND EMPLOYEES) IS SUBJECT TO THE TERMS AND CONDITIONS AGREED UPON BETWEEN SCHLUMBERGER AND THE COMPANY, INCLUDING: (a) RESTRICTIONS ON USE OF THE RECORDED-DATA; (b) DISCLAIMERS AND WAIVERS OF WARRANTIES AND REPRESENTATIONS REGARDING COMPANY'S USE AND RELIANCE UPON THE RECORDED-DATA; AND (c) CUSTOMER'S FULL AND SOLE RESPONSIBILITY FOR ANY INFERENCE DRAWN OR DECISION MADE IN CONNECTION WITH THE USE OF THIS RECORDED-DATA.

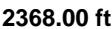
Contents

- 1. Header
- 2. Disclaimer
- 3. Contents
- 4. Well Sketch
- 5. Borehole Size/Casing/Tubing Record
- 6. Remarks and Equipment Summary
- 7. Depth Summary
- 8. One
 - 8.1 Integration Summary
 - 8.2 Software Version
 - 8.3 Composite Summary
 - 8.4 Log (Sonic CBL with VDL)
 - 8.5 Parameter Listing
- 9. Calibration Report
- 10. Tail

--	--

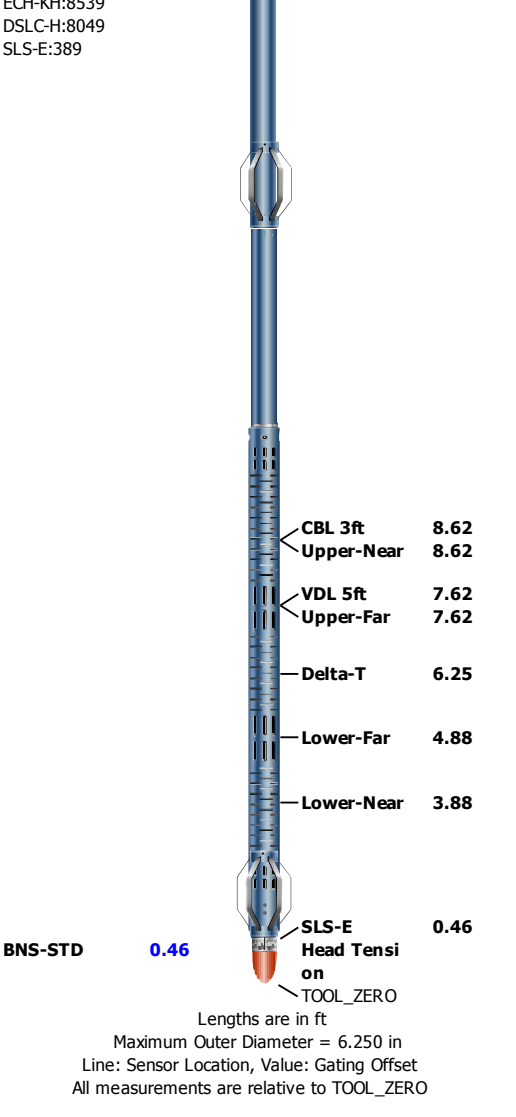
Well Sketch





Open Hole 13.5in

One: Toolstring			One: Remarks	
Equip name LEH-QT:2148	Length 36.58	MP name	Offset	Thank you for choosing Schlumberger Wireline!
LEH-QT:2148				Log run for cement evaluation
				Toolstring ran centralized as per toolsketch
				Log run under no pressure
DTC-H:8602	33.1			Tool zero at KB at 13 ft
ECH-KC:9680				Crew: Alex Schaab, Tim Ludgate
DTC-H:8602				
SGT-N	30.1			
SGH-K:2605				
SGD-TAA				
SGC-TB				
CAL-YA:213	24.6			
CAL-YA:213				
DSL-T-H:8049	21.1			
ESL-KL:8530				



Depth Summary

	One		
--	-----	--	--

Depth Measuring Device

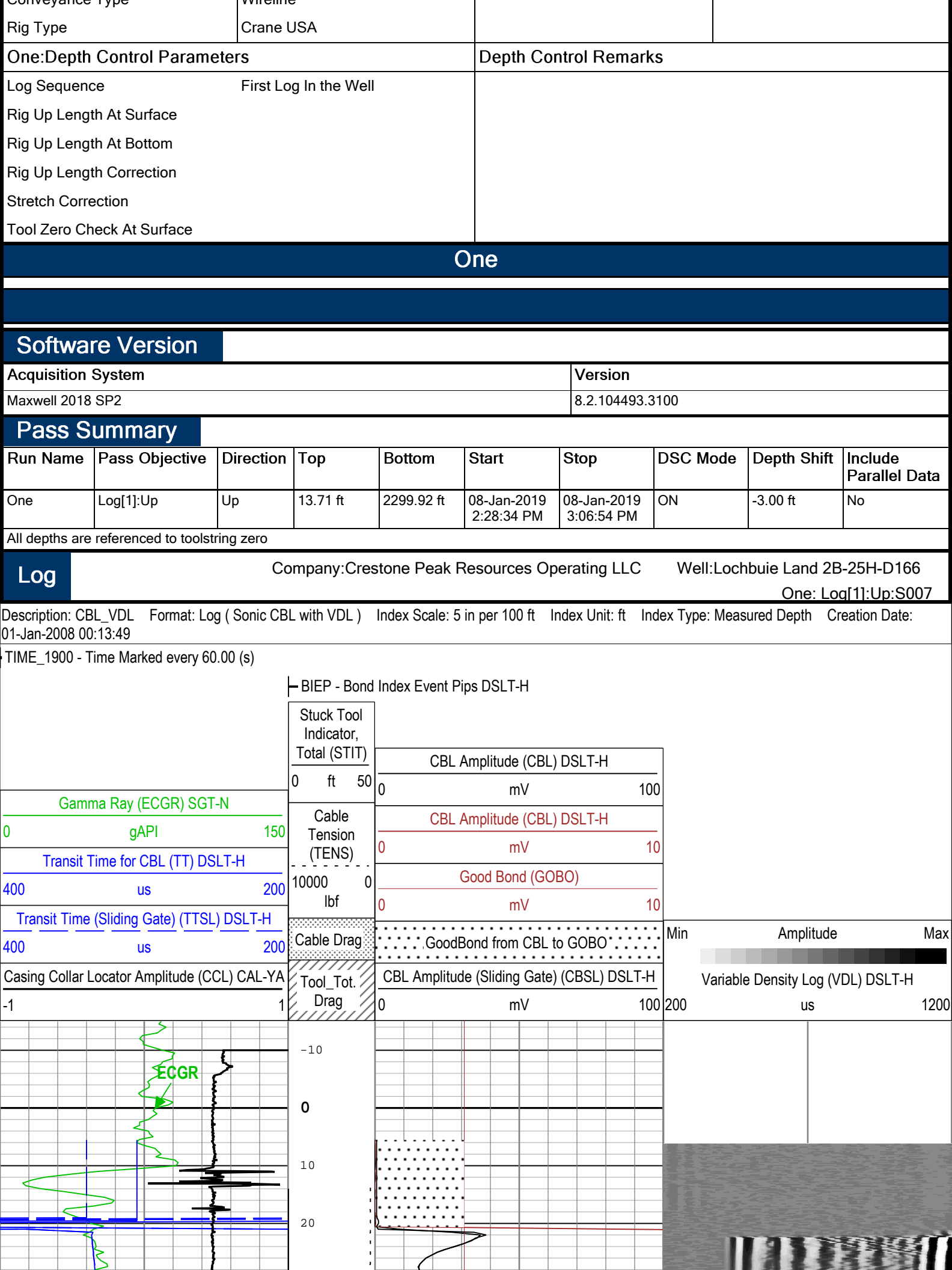
Type	IDW-B		
Serial Number			
Calibration Date			
Calibrator Serial Number			
Calibration Cable Type			
Wheel Correction 1	0		
Wheel Correction 2	0		

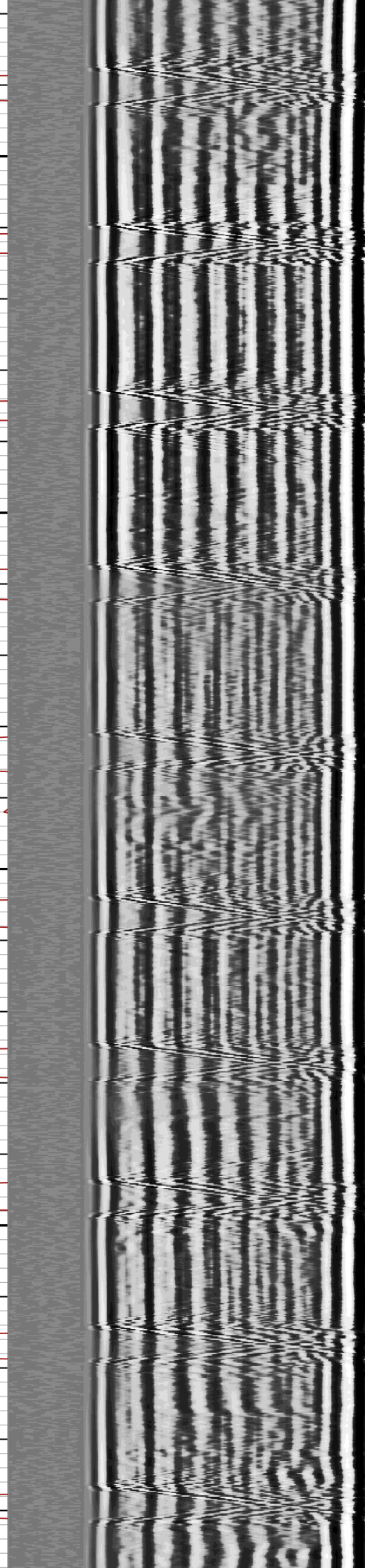
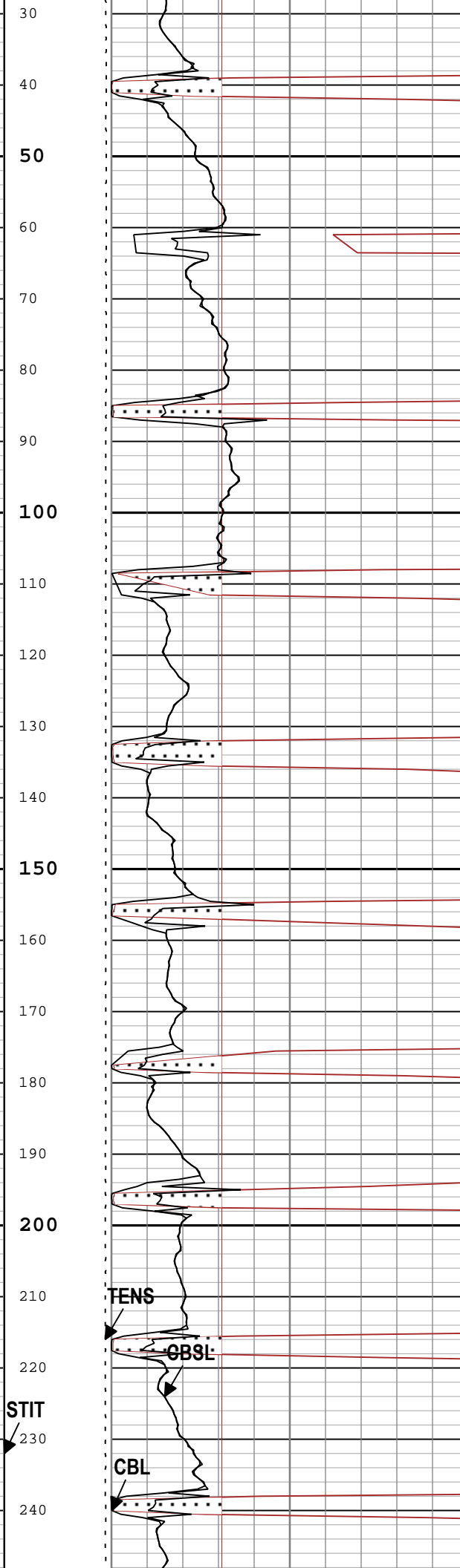
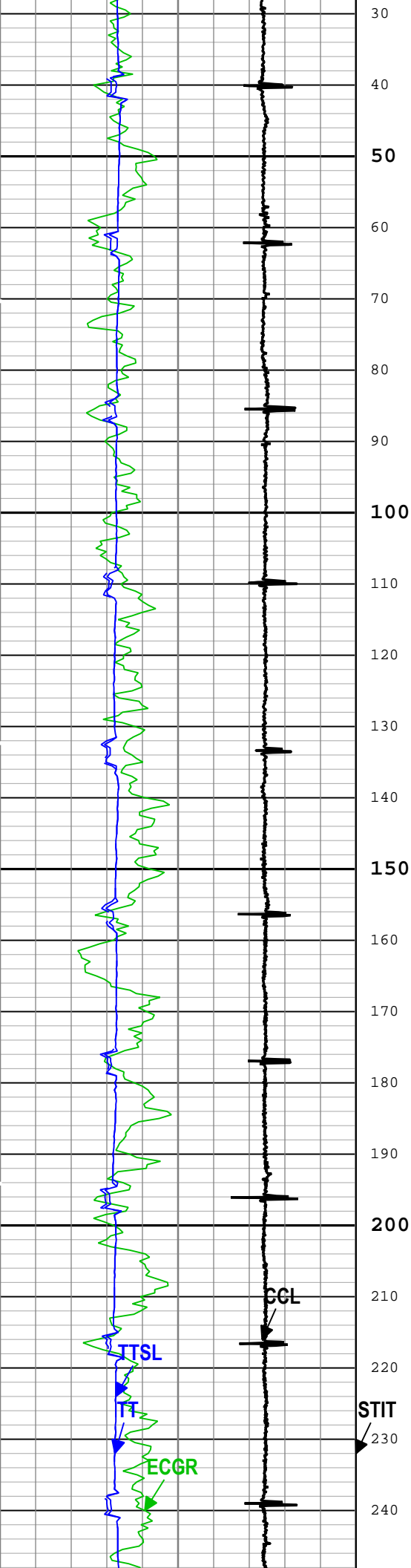
Tension Device

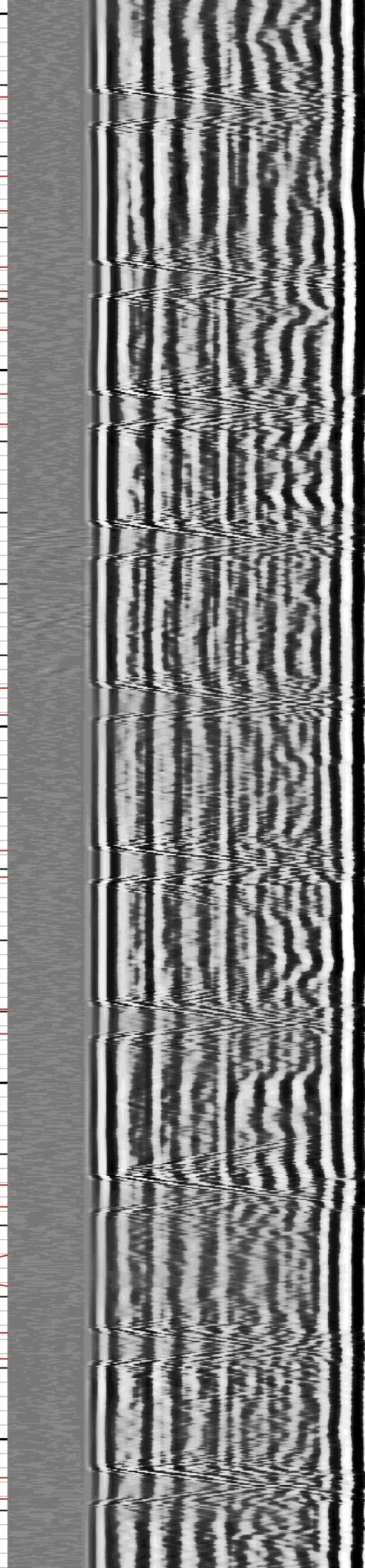
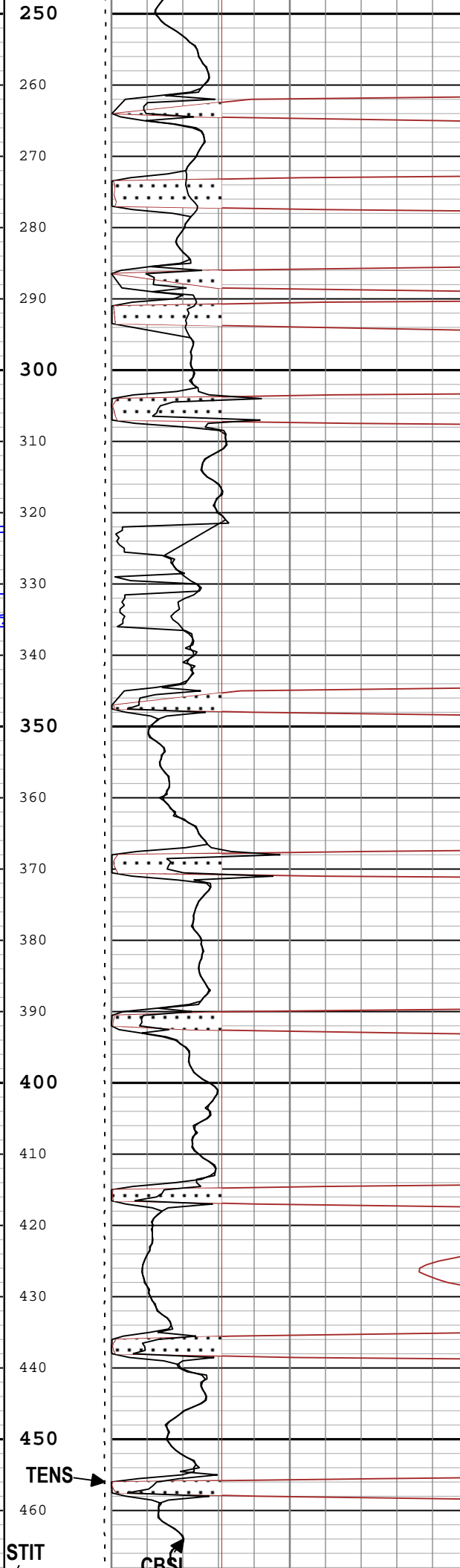
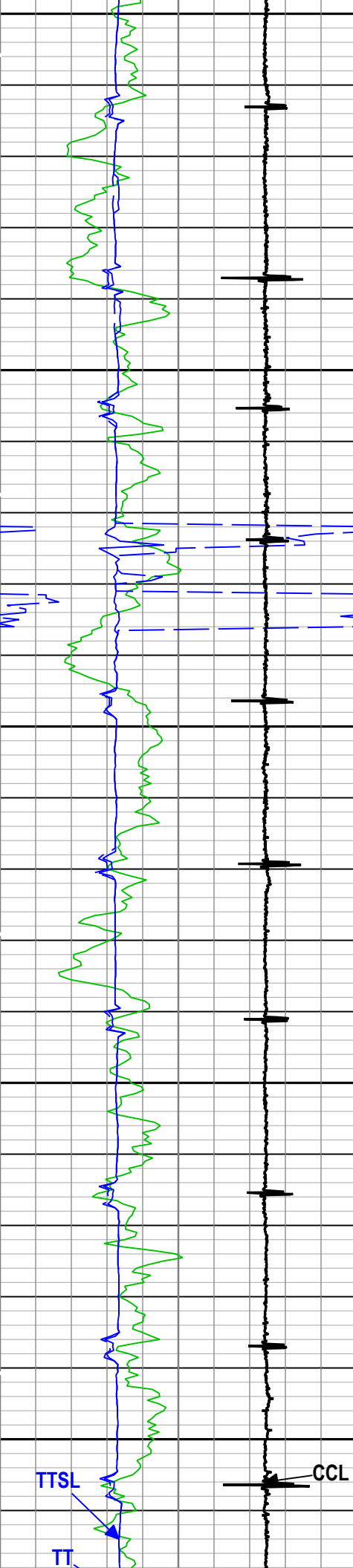
Type	CMTD-B/A		
Serial Number			
Calibration Date			
Calibrator Serial Number			
Number of Calibration Points	0		

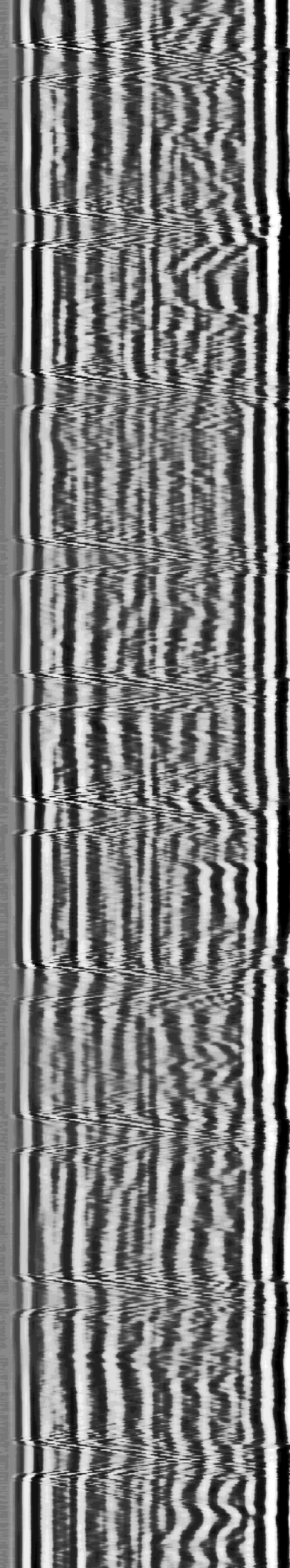
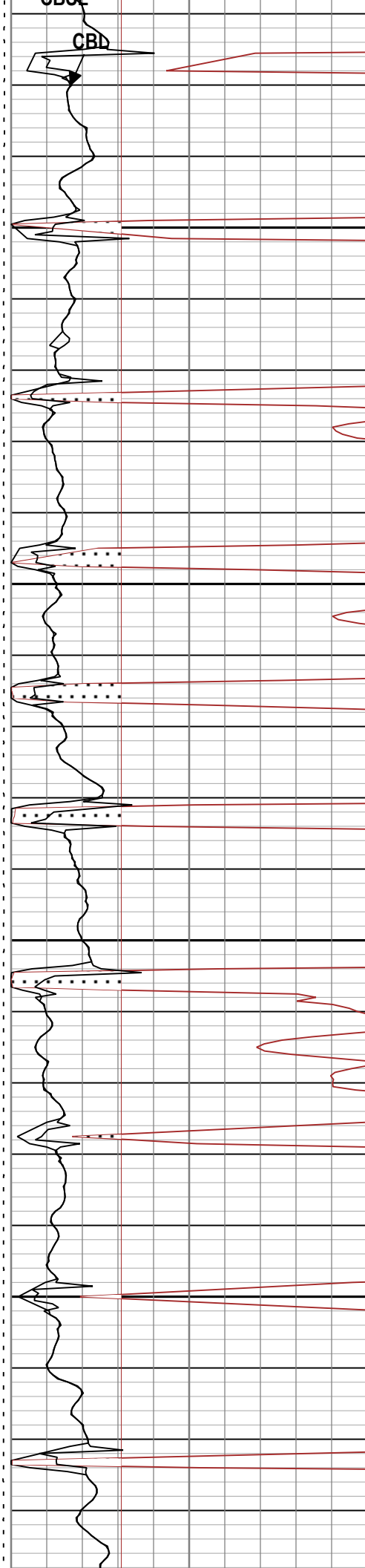
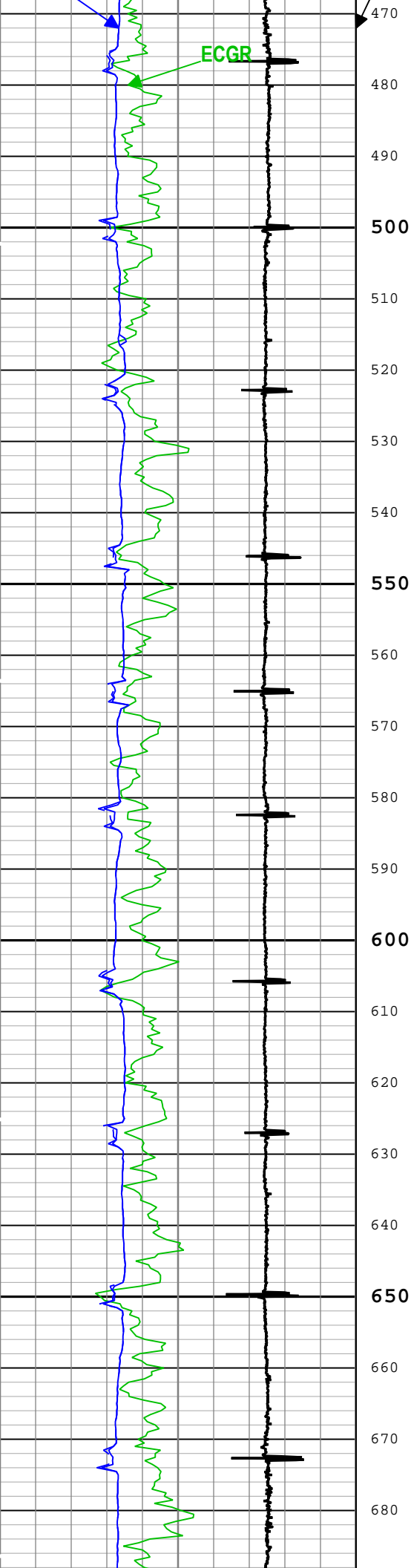
Logging Cable

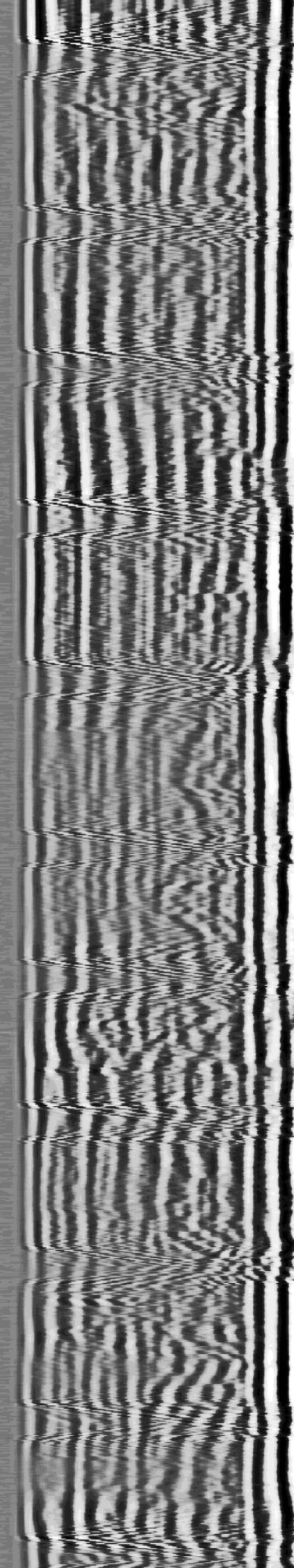
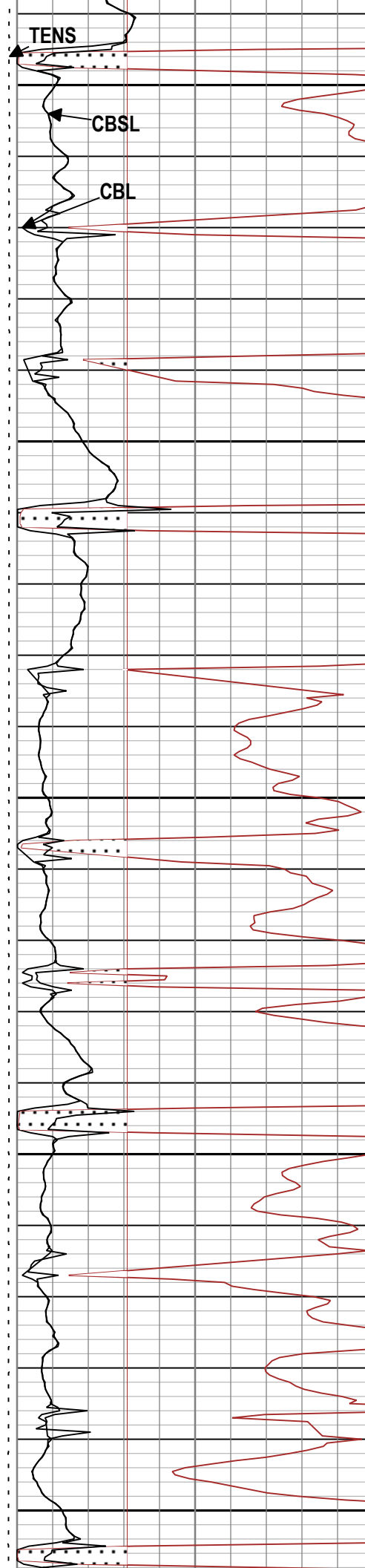
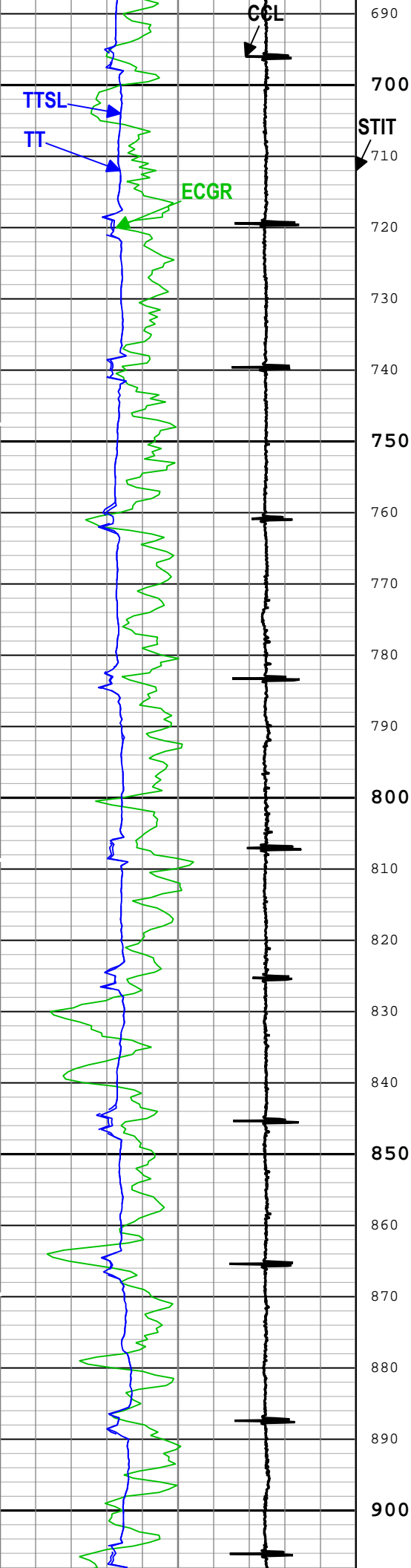
Type	7-46NT-XS		
Serial Number			
Length	24000.00 ft		
Conveyance Type	Wireline		

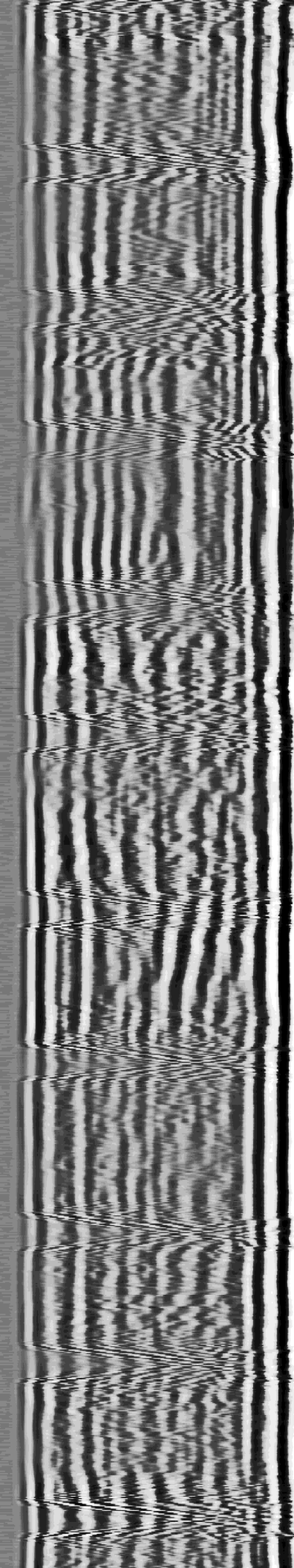
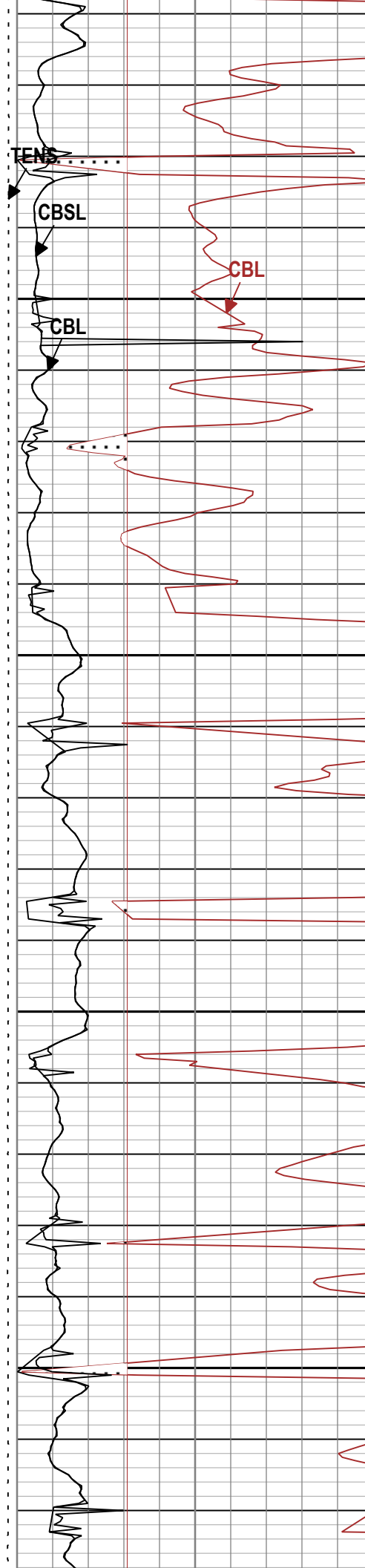
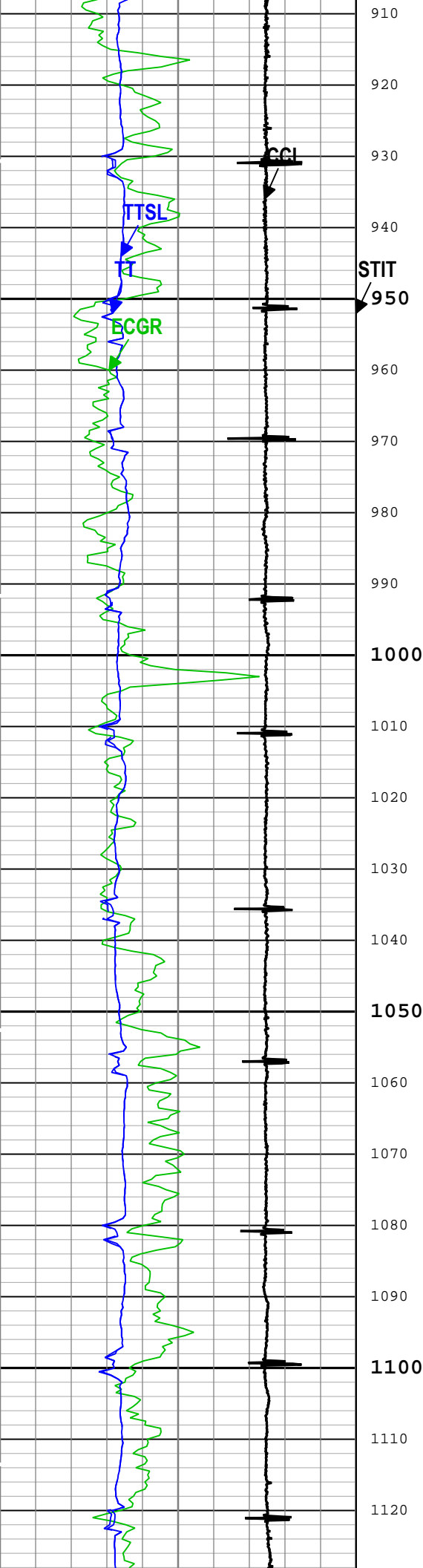


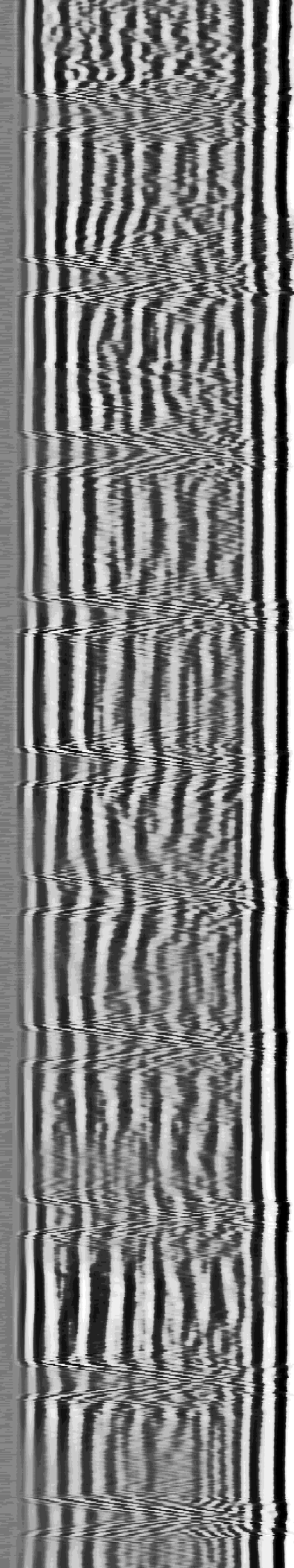
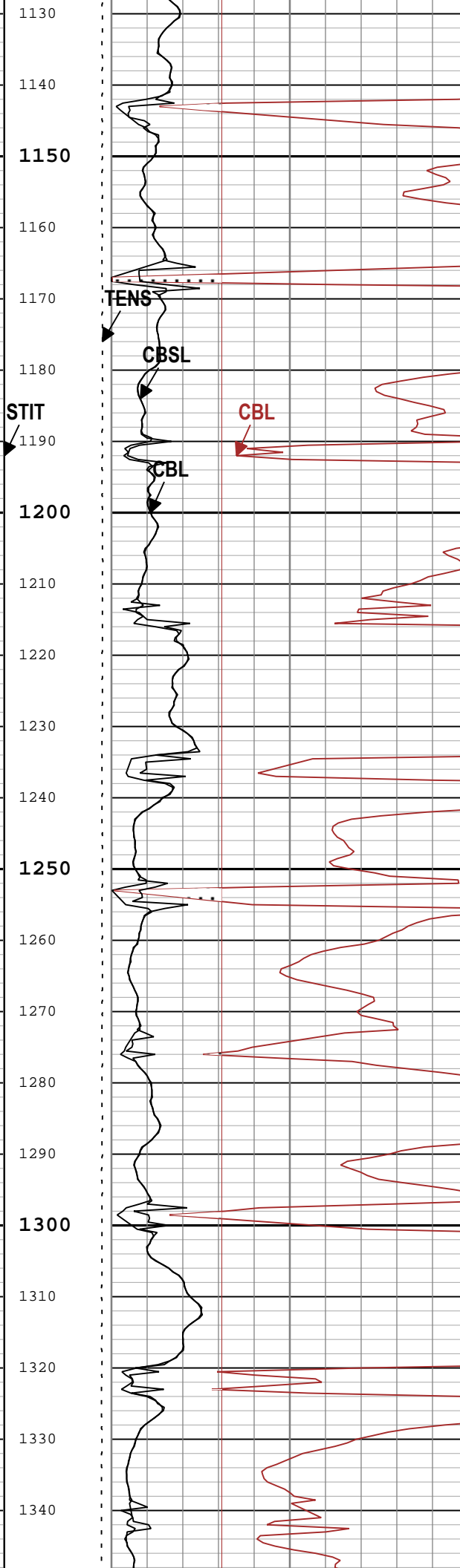
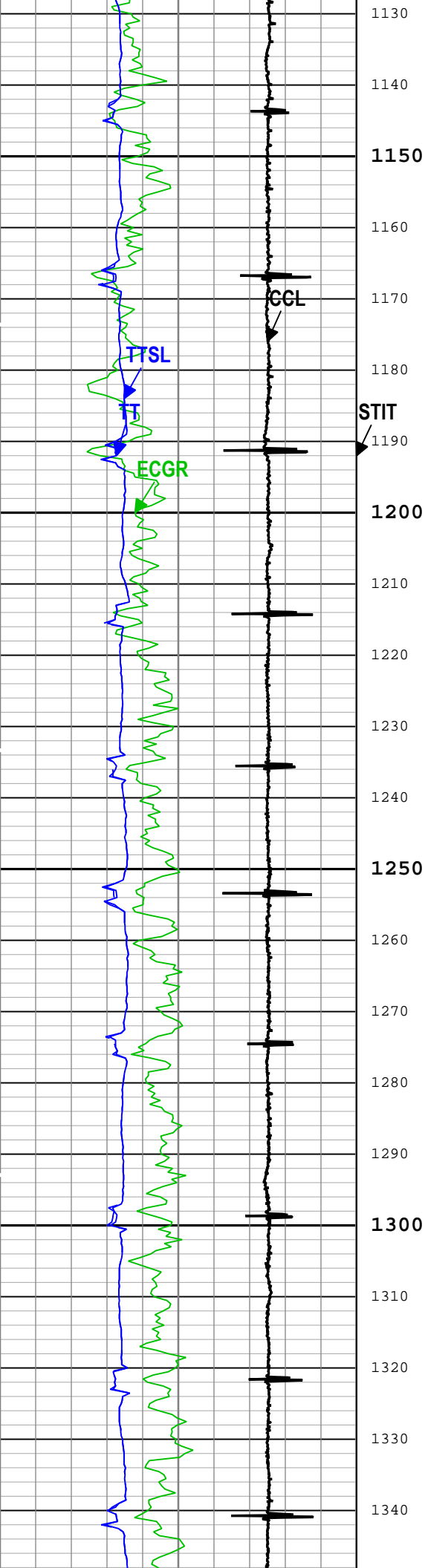


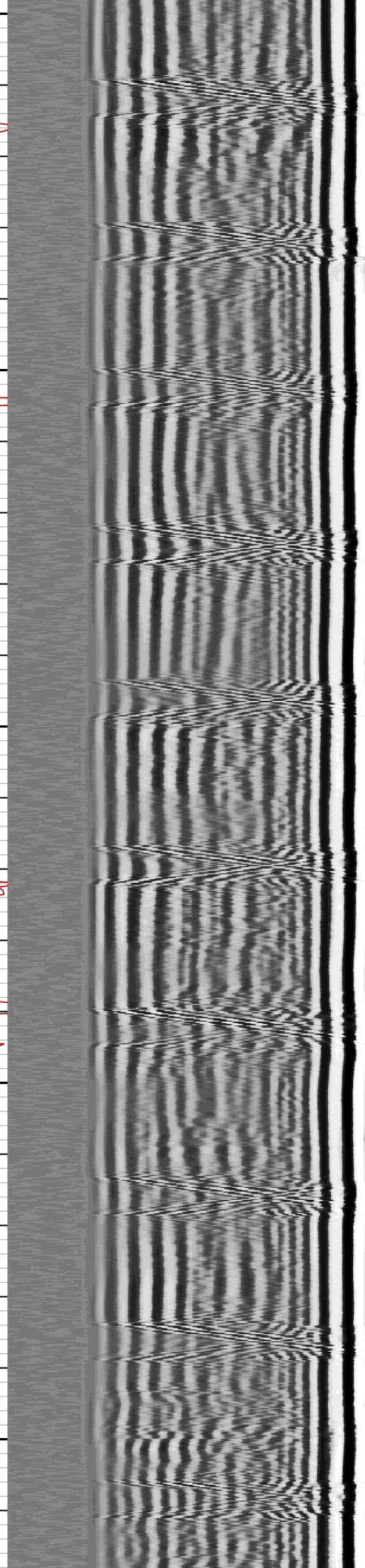
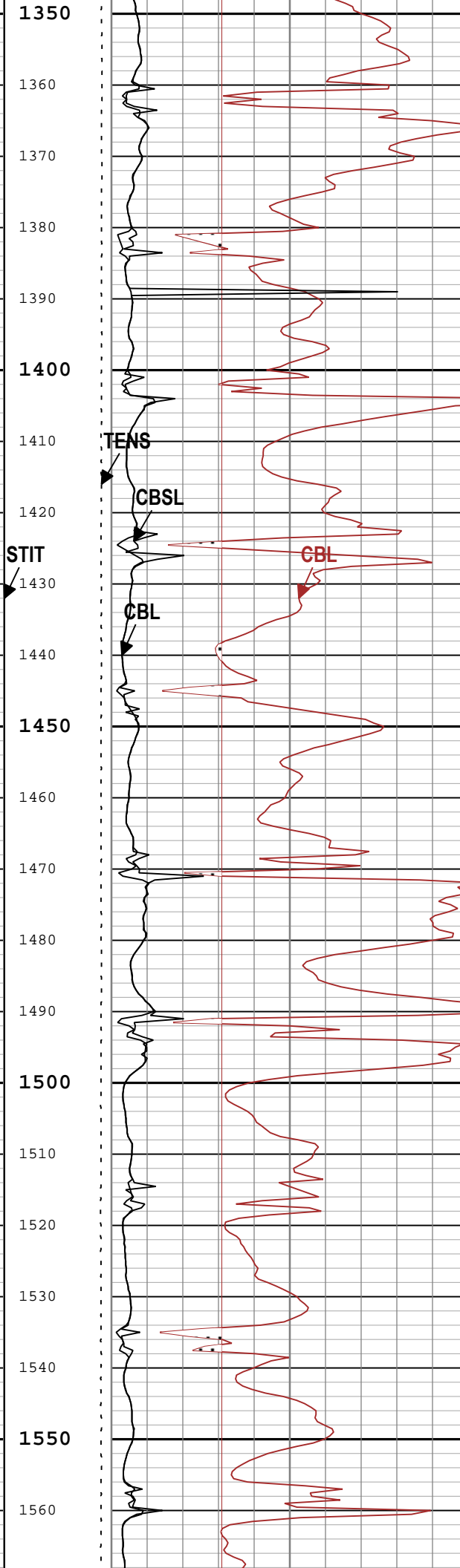
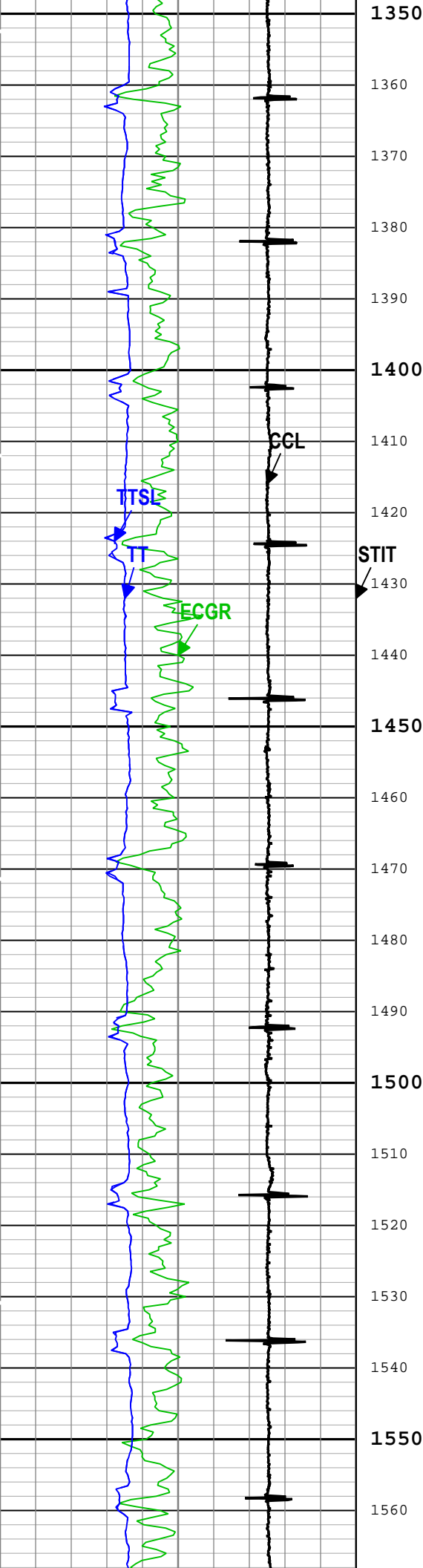


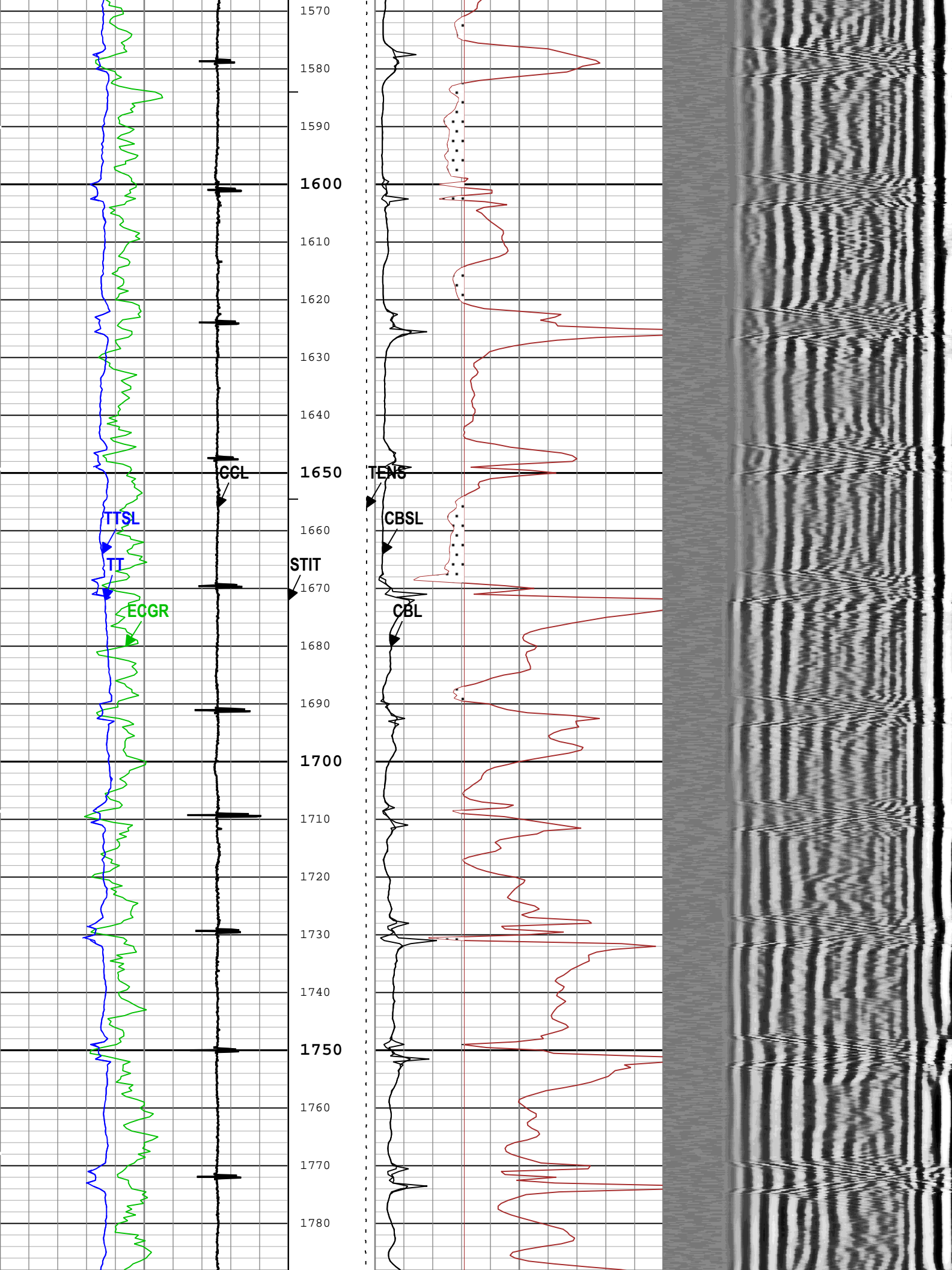


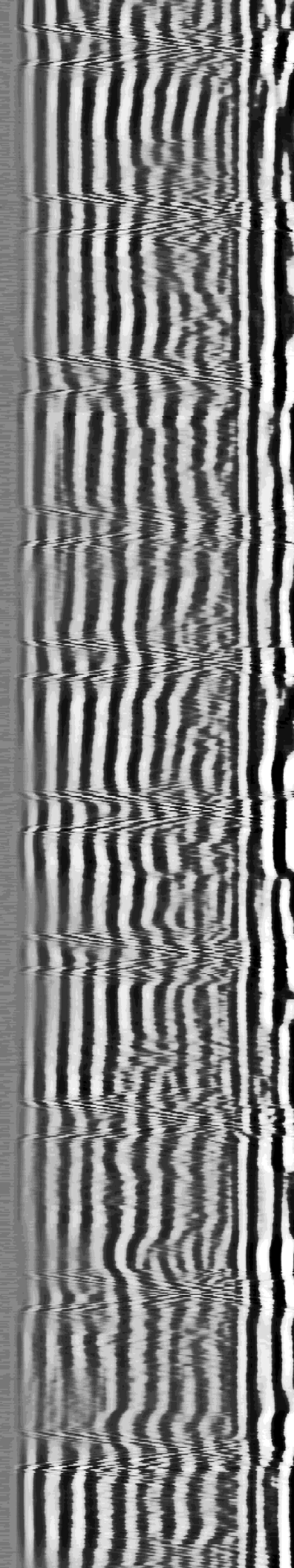
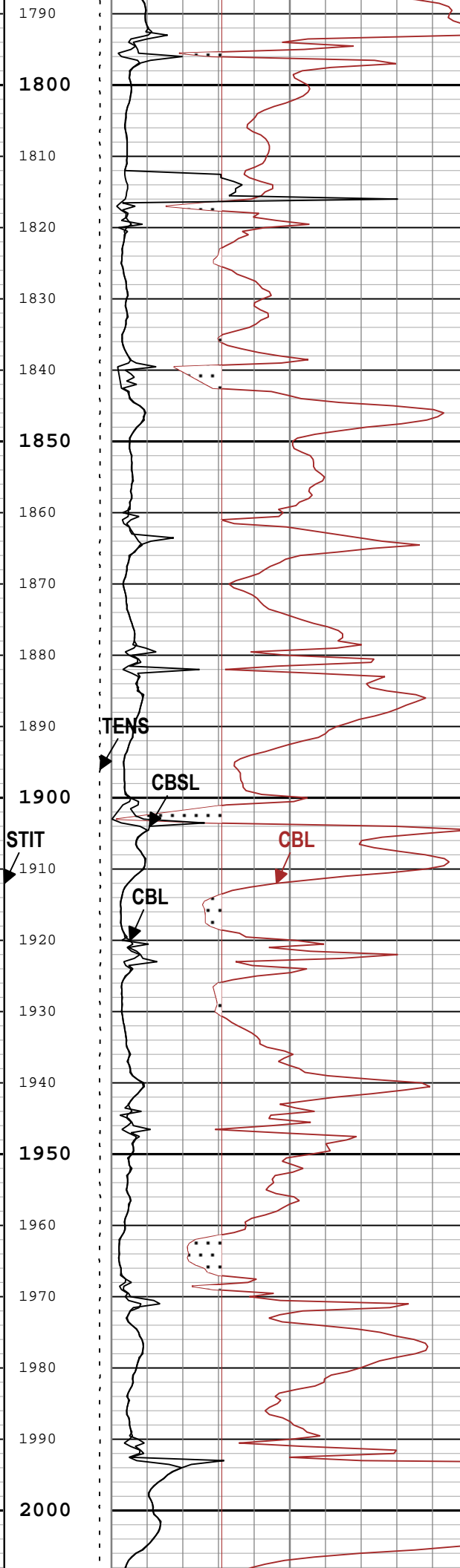
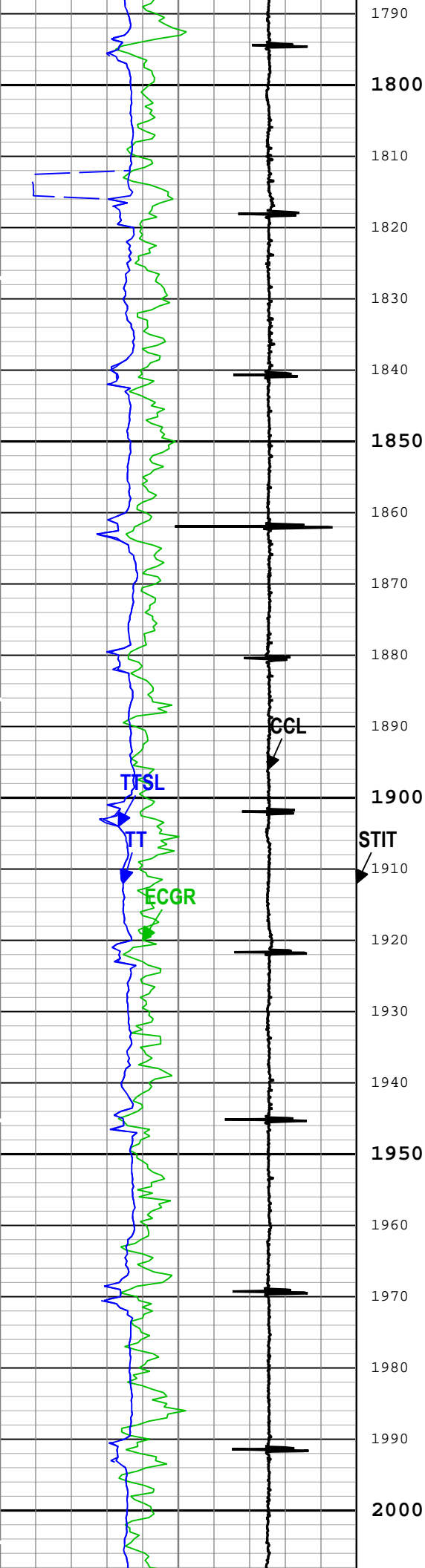


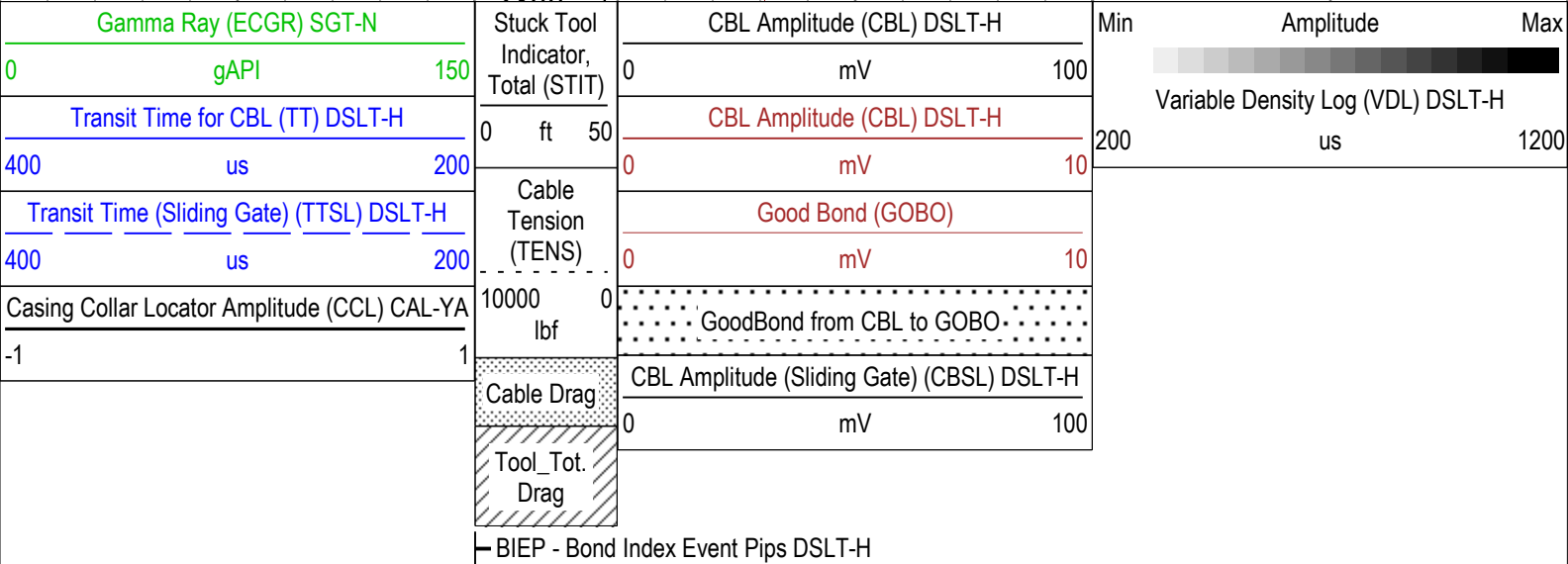












TIME_1900 - Time Marked every 60.00 (s)

Description: CBL_VDL Format: Log (Sonic CBL with VDL) Index Scale: 5 in per 100 ft Index Unit: ft Index Type: Measured Depth Creation Date: 01-Jan-2008 00:13:49

Channel Processing Parameters

One: Parameters

Parameter	Description	Tool	Value	Unit
BARI(ISSBAR)	Barite Mud Presence Flag	Borehole	No	
BHS	Borehole Status (Open or Cased Hole)	Borehole	Cased	
BS	Bit Size	WLSESSION	13.5	in
CBLO	Casing Bottom (Logger)	WLSESSION	2378	ft
CBRA	CBL LQC Reference Amplitude in Free Pipe	DSLT-H	52	mV
CCL_MULTIPLIER	Casing Collar Locator Multiplier	CAL-YA	15	
CDEN	Cement Density	SGT-N	2	g/cm3
DC_MODE	Depth Correction Mode	DepthCorrection	Real-time	
DETE	Delta-T Detection	DSLT-H	E1	
DFD	Drilling Fluid Density	Borehole	8.34	lbm/gal
GCSE_DOWN_PASS	Generalized Caliper Selection for WL Log Down Passes	Borehole	BS(RT)	
GCSE_UP_PASS	Generalized Caliper Selection for WL Log Up Passes	Borehole	BS(RT)	
GOBO_CURR	Good Bond in Arbitrary Cement	DSLT-H	3.09	mV
MAHTR	Manual High Threshold Reference for first arrival detection	DSLT-H	120	

MAHTR	Manual High Threshold Reference for first arrival detection	DSLTH	120	
MATT_CURR	Maximum Attenuation in Arbitrary Cement	DSLTH	10.91	dB/ft
MCI	Minimum Cemented Interval for Isolation	DSLTH	14.81	ft
MNHTR	Minimum High Threshold Reference for first arrival detection	DSLTH	100	
MSA	Minimum Sonic Amplitude	DSLTH	1.53	mV
MSA_CURR	Minimum Sonic Amplitude in Arbitrary Cement	DSLTH	1.53	mV
NMSG	Near Minimum Sliding Gate	DSLTH	305	us
SGAD	Sliding Gate Status	DSLTH	Off	
SGDT	Sliding Gate Delta-T	DSLTH	57	us/ft
VDLG	VDL Manual Gain	DSLTH	6.5	

Tool Control Parameters

One: Parameters

Parameter	Description	Tool	Value	Unit
MODE	DSLTH Acquisition Mode	DSLTH	CBL	
RATE	DSLTH Firing Rate	DSLTH	15 Hz	
DTFS	DSLTH Telemetry Frame Size	DSLTH	536	
MAX_LOG_SPEED	Toolstring Maximum Logging Speed	WLSESSION	3600	ft/h
SGAI	Selectable Acquisition Gain	DSLTH	x1	

Calibration Report

DSLTH (Digitizing Sonic Logging Tool - H) Calibration - Run One

Primary Equipment :

Sonic Logging Sonde E supports 3'-5'BHC DT and CBL/VDL SLS-E 389

CBL Normalization - CBL Accumulations

Master (Measured):		15:00:27 27-Mar-2018					
Measurement	Unit	Phase	Nominal	Low Limit	Actual	High Limit	
Upper Far Amplitude		Master	4200.0	3200.0	3805.0		<div><div></div></div>
Upper Near Raw Amplitude	mV	Master	33.000	27.000	31.807	43.000	<div><div></div></div>
Lower Far Amplitude		Master	4200.0	3200.0	3601.3		<div><div></div></div>
Lower Near Raw Amplitude	mV	Master	46.000	27.000	38.403	68.000	<div><div></div></div>

CBL Normalization - CBL/VDL Coefficients

Master (Measured):		15:00:27 27-Mar-2018					
Measurement	Unit	Phase	Nominal	Low Limit	Actual	High Limit	
CBL Correction Factor for UT		Master	3.500	2.700	3.647	4.300	<div><div></div></div>
CBL Correction Factor for LT		Master	2.500	1.700	3.021	4.300	<div><div></div></div>
VDL Ratio between UT and LT for CBLB Mode		Master	1.000		0.946		<div><div></div></div>

CBL Free Pipe Adjustment - Free Pipe Measurement

Before (Manual Entry):		14:17:39 08-Jan-2019					
Measurement	Unit	Phase	Nominal	Low Limit	Actual	High Limit	
CBL Amplitude - 0	mV	Before	----	----	----	----	<div><div></div></div>
CBL Reference Amplitude (CBRA) - 0	mV	Before	----	----	----	----	<div><div></div></div>
Measurement Depth - 0	ft	Before	----	----	----	----	<div><div></div></div>

CBL Free Pipe Adjustment - CBL Amplitude Coefficient

Before (Manual Entry):		14:17:39 08-Jan-2019					
Measurement	Unit	Phase	Nominal	Low Limit	Actual	High Limit	
CBL Adjustment Factor		Before	1.000	0.200	1.290	5.000	<div><div></div></div>
Depth of Before Calibration	ft	Before			1.00		<div><div></div></div>

Company: Crestone Peak Resources Operating LLC

Schlumberger

Well: Lochbuie Land 2B-25H-D166

Field: Wattenberg

County:	Weld
State:	Colorado
Digital Sonic Logging Tool	
CBL with VDL	