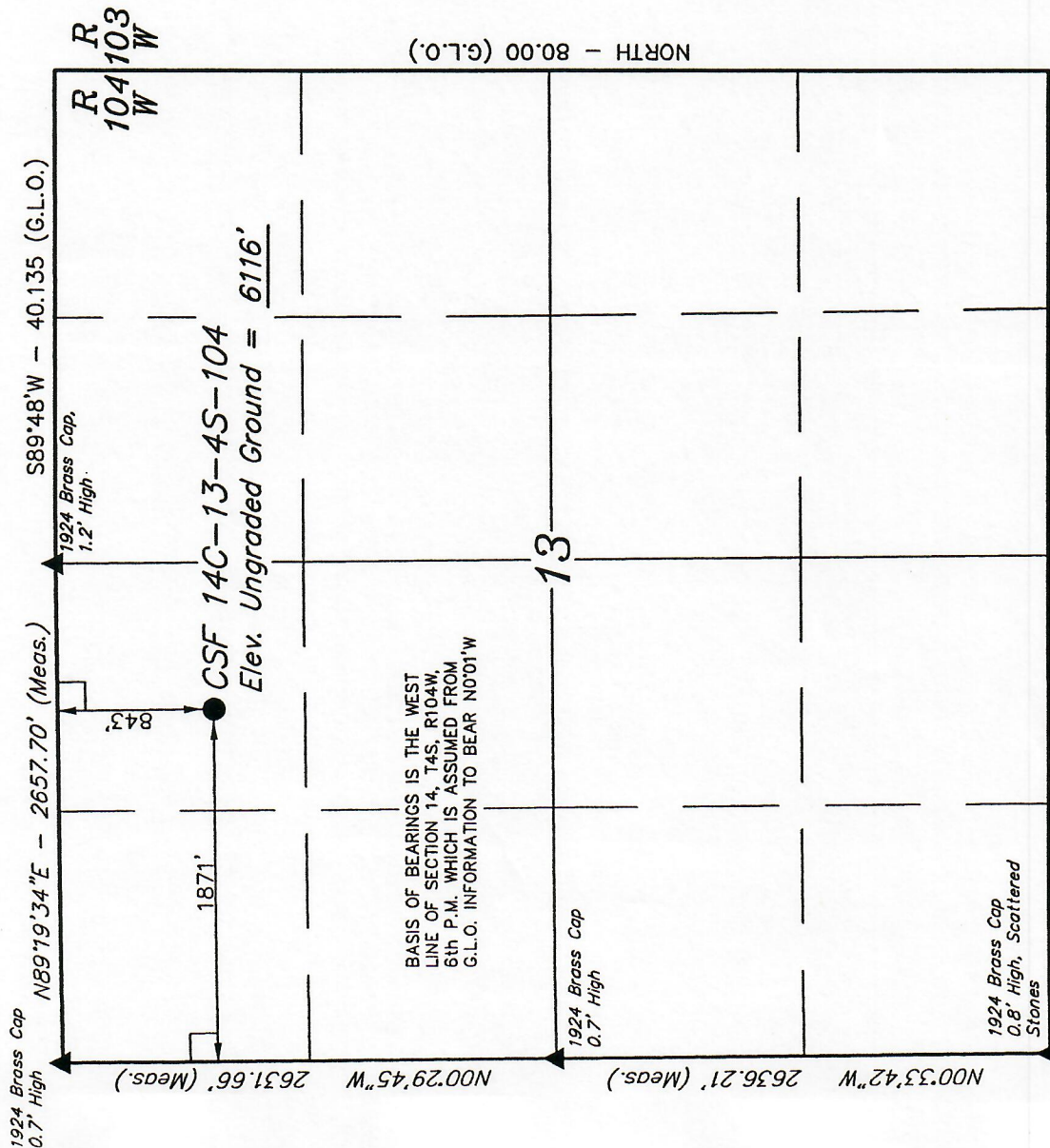


*T4S, R104W, 6th P.M.*

Well location, CSF #14C-13-4S-104, located as shown in the NE 1/4 NW 1/4 of Section 13, T4S, R104W, 6th P.M. Rio Blanco County, Colorado.



NOTE:  
SEE ADDENDUM TO LEGAL PLAT FOR  
EXISTING IMPROVEMENTS WITHIN 200'  
OF THE PROPOSED WELL HEAD.

● = PROPOSED WELL HEAD.  
▲ = SECTION CORNERS LOCATED.  
LATITUDE = 39°42'58" (39.716111)  
LONGITUDE = 109°01'21" (109.022500)

## BASIS OF ELEVATION

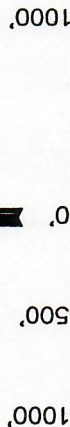
BENCH MARK (A-37) LOCATED IN THE SE 1/4 OF SECTION 35, T3S, R104W, 6th P.M. TAKEN FROM DAVIS CANYON QUADRANGLE, UTAH-COLORADO, 7.5 MINUTE SERIES (TOPOGRAPHICAL MAP) PUBLISHED BY THE UNITED STATES DEPARTMENT OF THE INTERIOR, GEOLOGICAL SURVEY. SAID ELEVATION IS MARKED AS BEING 6013 FEET.



RECEIVED

NOV - 3 04

COGCC



SCALE



01472489

CERTIFICATE

THIS IS TO CERTIFY THAT THE ABOVE PLAT WAS PREPARED FROM  
FIELD NOTES OF ACTUAL SURVEYS MADE BY ME OR UNDER MY  
SUPERVISION AND THAT THE SAME ARE TRUE AND CORRECT TO THE  
BEST OF MY KNOWLEDGE AND BELIEF. 47400

Rev: 9-14-04 K.G.

Revised: 11-5-01

# UNTAH ENGINEERING & LAND SURVEYING

85 SOUTH 200 EAST - VERNAL, UTAH 84078

(435) 789-1017

SCALE 1" = 1000'	DATE SURVEYED: 9-25-01	DATE DRAWN: 10-1-01
PARTY J.F. P.J. C.G.	REFERENCES G.L.O. PLAT	
WEATHER	FILE	



# EVERGREEN RESOURCES INC.

## ADDENDUM TO LEGAL PLAT FOR

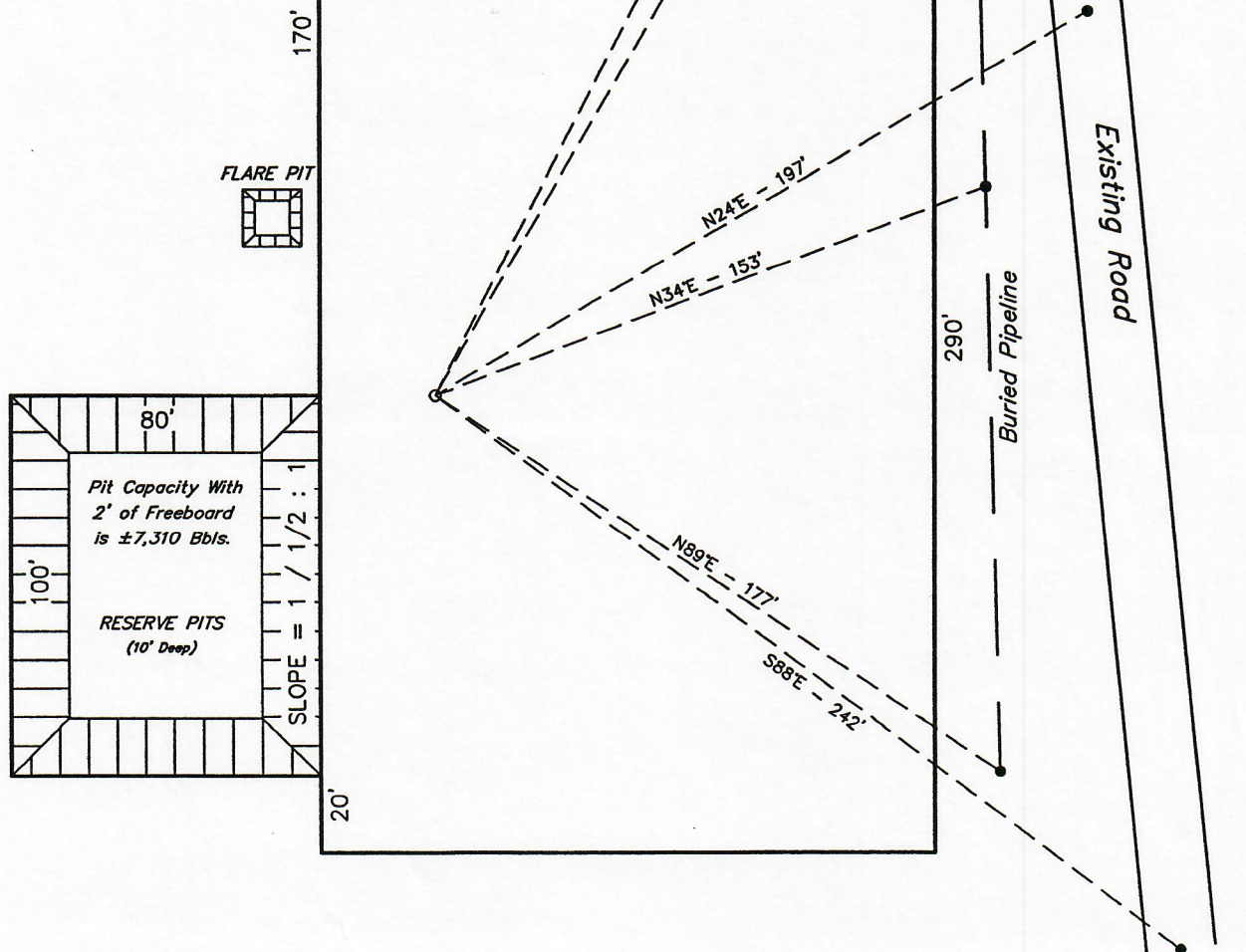
CSF #14C-13-4S-104  
SECTION 13, T4S, R104W, 6th P.M.  
843' FNL 1871' FWL



SCALE: 1" = 50'  
DATE: 10-1-01  
Drawn By: C.G.  
Revised: 11-5-01  
Rev: 9-14-04 K.G.

### NOTE:

Flare Pit is to be located  
a min. of 100' from the  
Well Head.



SURFACE USE OF LOCATION IS  
GRAZING, VEGETATION CONSISTS  
MAINLY OF SAGEBRUSH & GRASSES.



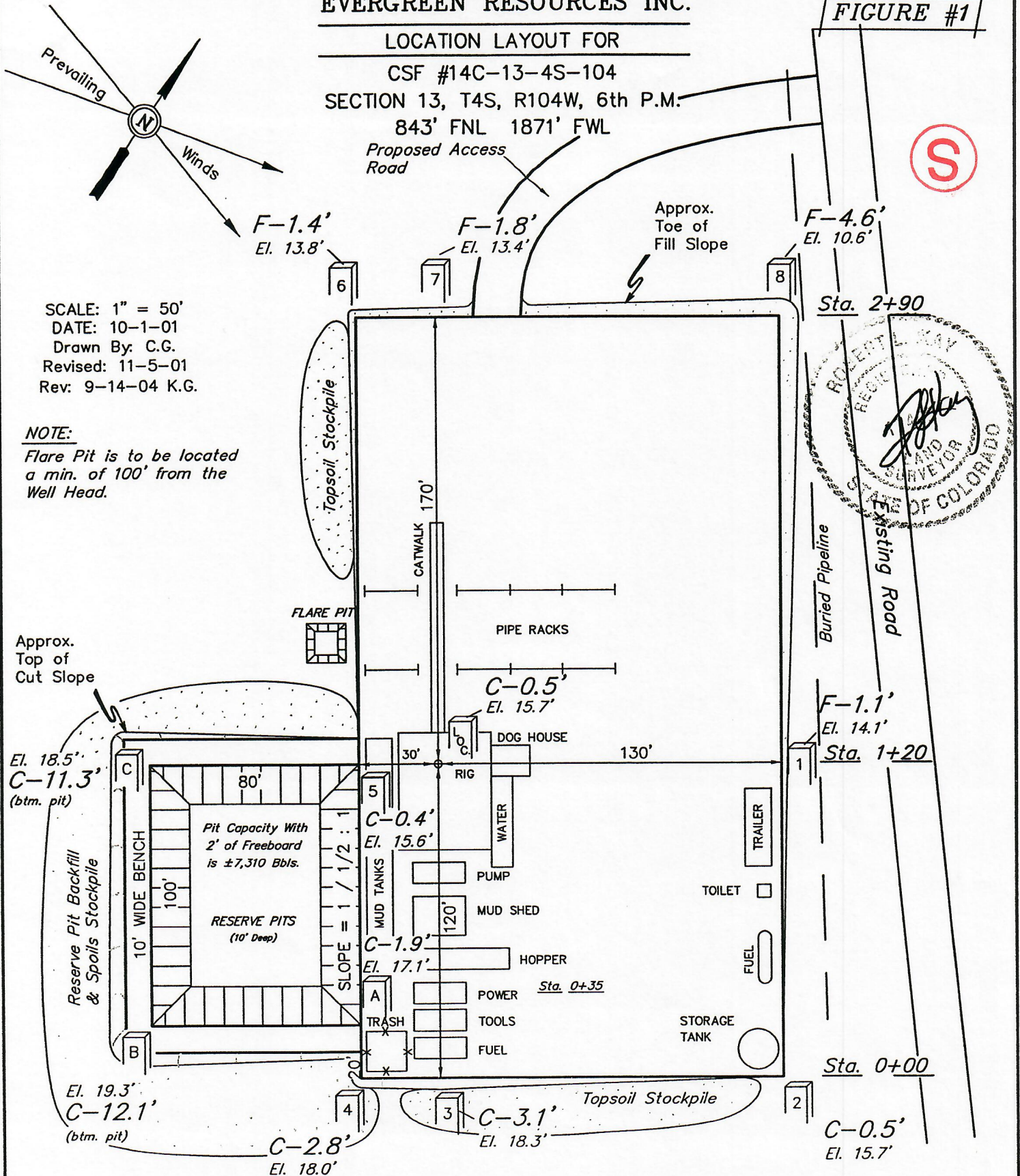
# EVERGREEN RESOURCES INC.

## LOCATION LAYOUT FOR

CSF #14C-13-4S-104  
SECTION 13, T4S, R104W, 6th P.M.  
843' FNL 1871' FWL

Proposed Access Road

FIGURE #1



SCALE: 1" = 50'  
DATE: 10-1-01  
Drawn By: C.G.  
Revised: 11-5-01  
Rev: 9-14-04 K.G.

**NOTE:**  
Flare Pit is to be located  
a min. of 100' from the  
Well Head.

### NOTES:

Elev. Ungraded Ground At Loc. Stake = 6115.7'  
FINISHED GRADE ELEV. AT LOC. STAKE = 6115.2'

UINTAH ENGINEERING & LAND SURVEYING  
85 So. 200 East • Vernal, Utah 84078 • (435) 789-1017



# EVERGREEN RESOURCES INC.

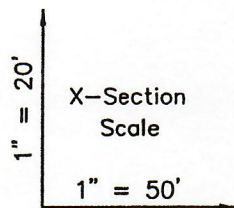
## TYPICAL CROSS SECTIONS FOR

CSF #14C-13-4S-104

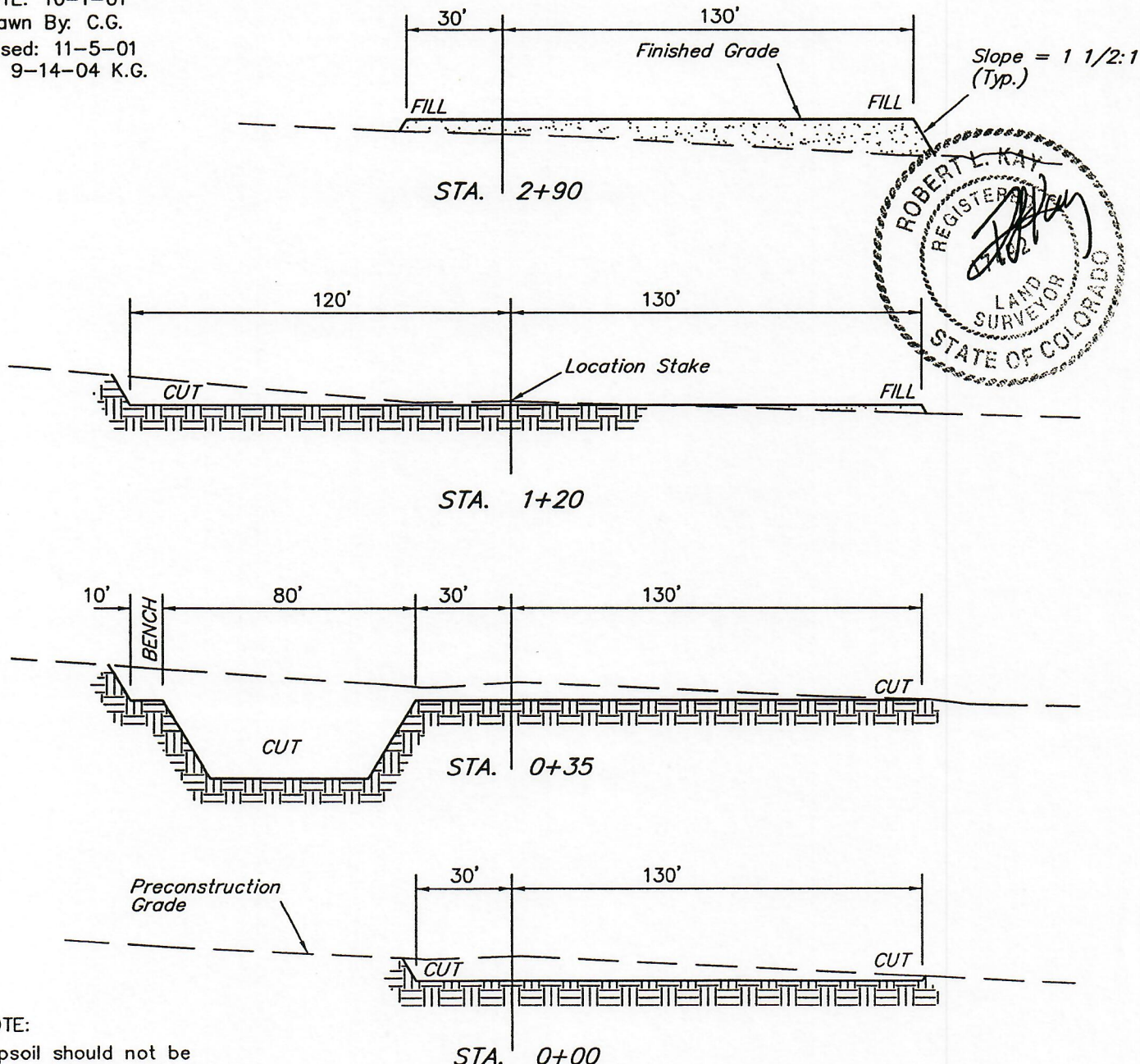
SECTION 13, T4S, R104W, 6th P.M.

843' FNL 1871' FWL

FIGURE #2



DATE: 10-1-01  
Drawn By: C.G.  
Revised: 11-5-01  
Rev: 9-14-04 K.G.



### NOTE:

Topsoil should not be Stripped Below Finished Grade on Substructure Area.

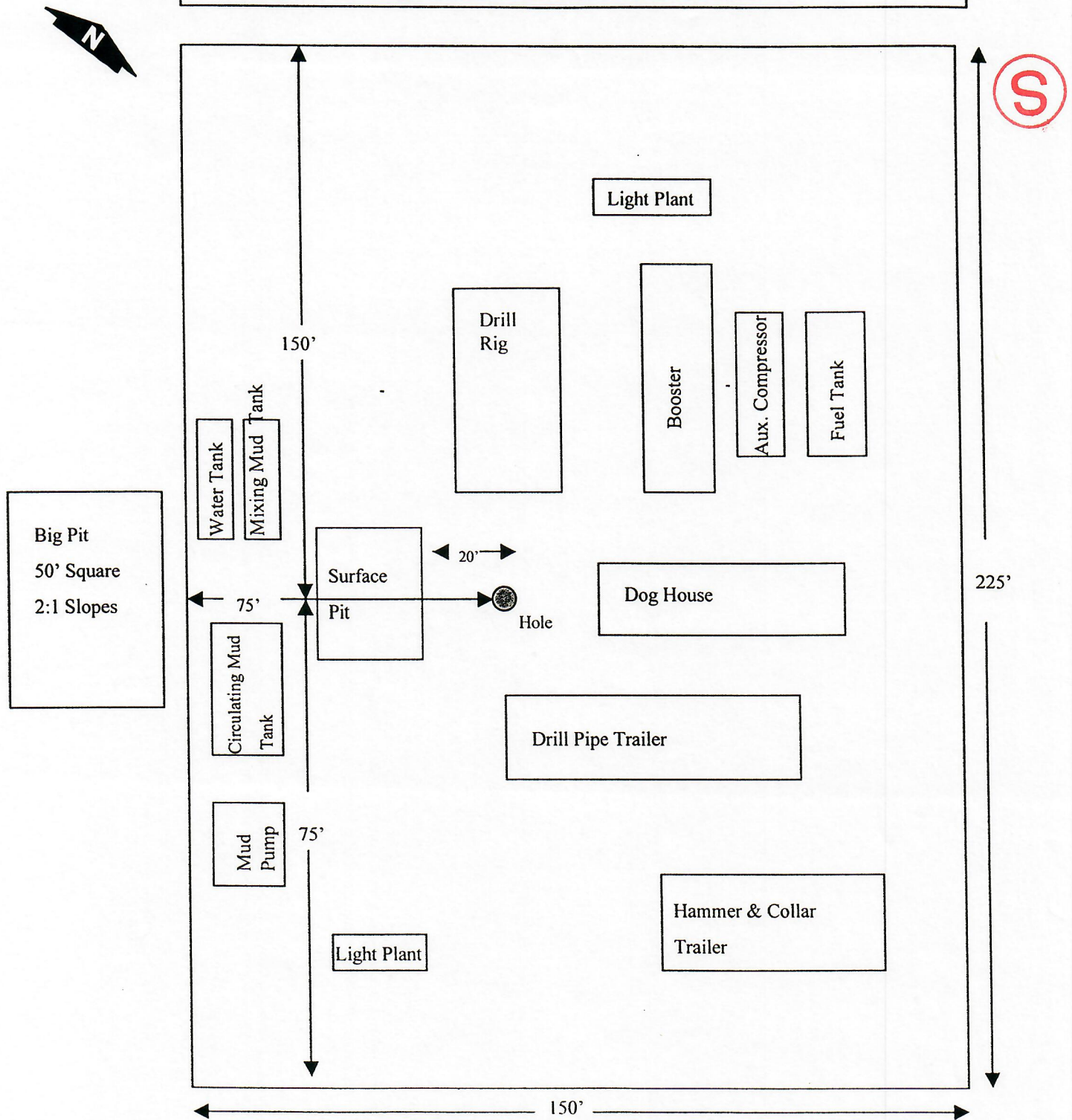
### APPROXIMATE YARDAGES

CUT	
(6") Topsoil Stripping	= 1,060 Cu. Yds.
Remaining Location	= 3,560 Cu. Yds.
<b>TOTAL CUT</b>	<b>= 4,620 CU.YDS.</b>
<b>FILL</b>	<b>= 2,250 CU.YDS.</b>

EXCESS MATERIAL AFTER 5% COMPACTION	= 2,250 Cu. Yds.
Topsoil & Pit Backfill (1/2 Pit Vol.)	= 2,100 Cu. Yds.
EXCESS UNBALANCE (After Rehabilitation)	= 150 Cu. Yds.

UINTAH ENGINEERING & LAND SURVEYING  
85 So. 200 East \* Vernal, Utah 84078 \* (435) 789-1017

Pense Rig #19 - Rough Sketch of Dill site Size & Set Up



Drawing Not to Scale