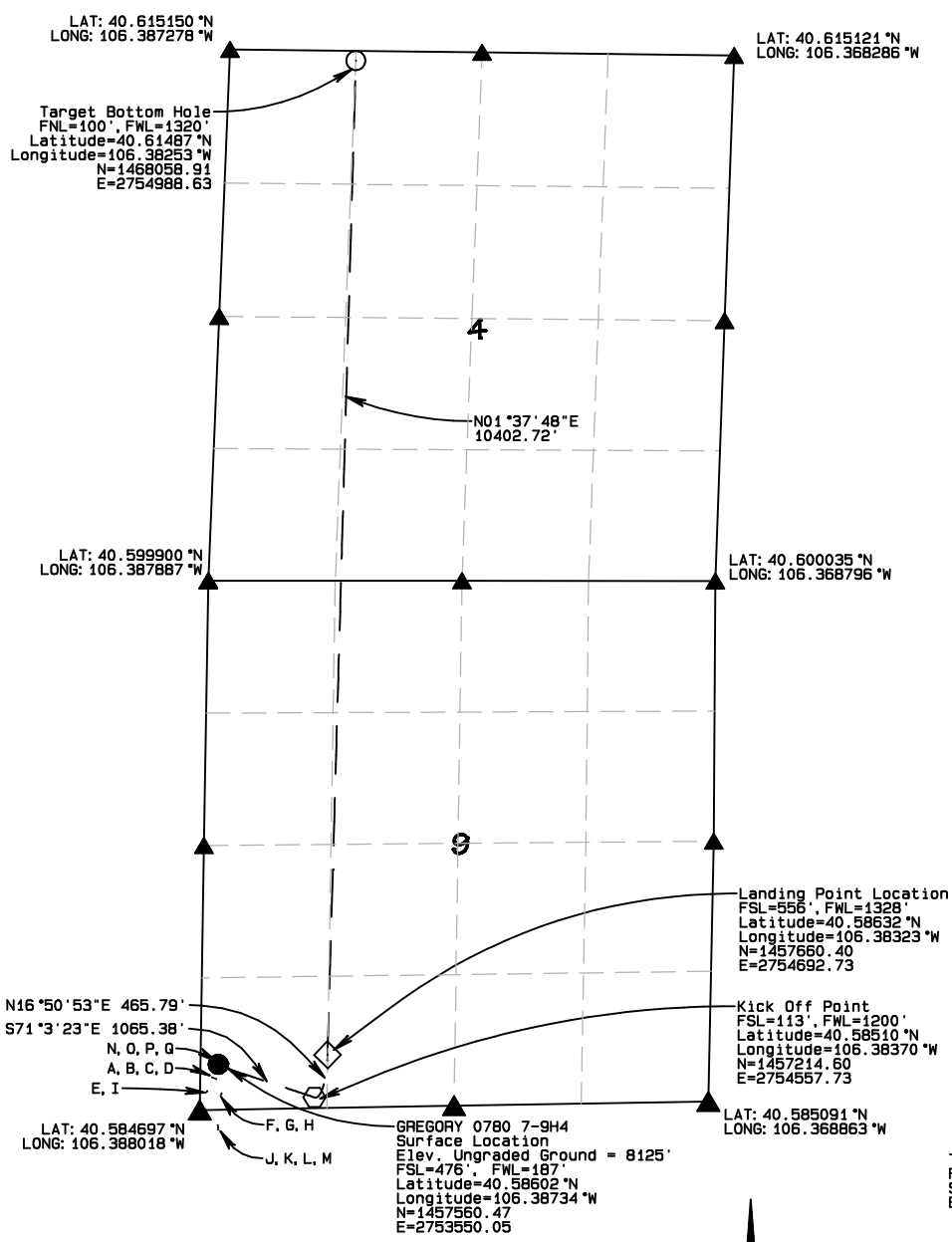


DIRECTIONS:
 FROM WALDEN, CO. GO SOUTH ON COLORADO HIGHWAY 14,
 (SIGN FOR STEAMBOAT SPRINGS/KREMLING) 12.78 MILES,
 RIGHT LEFT ACCESS ROAD, 1.25 MILES TO SITE.
 TOTAL DISTANCE FROM WALDEN, CO. 14.03 +/-

C.O.G.C.C. EXISTING WELLS						
LETTER	WELL NAME	STATUS	PLANNED FOOTAGES	SECTION		
A	CASTLE 0780 5-17H20	PRODUCING	343' FSL 119' FWL	9		
B	CASTLE 0780 6-17H20	PRODUCING	337' FSL 133' FWL	9		
C	CASTLE 0780 7-17H20	PRODUCING	332' FSL 147' FWL	9		
D	CASTLE 0780 8-17H20	PRODUCING	326' FSL 162' FWL	9		
E	GREGORY 0780 1-9H	PRODUCING	187' FSL 71' FWL	9		
F	GREGORY 0780 2-9H	PERMITTED	176' FSL 222' FWL	9		
G	GREGORY 0780 3-9H	PERMITTED	162' FSL 217' FWL	9		
H	GREGORY 0780 4-9H	PERMITTED	148' FSL 212' FWL	9		
I	GREGORY 5-09H	PERMITTED	202' FSL 71' FWL	9		
J	JANET 0780 1-16H21	PRODUCING	203' FSL 71' FWL	16		
K	JANET 0780 2-16H21	PRODUCING	189' FSL 191' FWL	16		
L	JANET 0780 3-16H21	PRODUCING	174' FSL 189' FWL	16		
M	JANET 0780 4-16H21	PRODUCING	159' FSL 188' FWL	16		
N	MUTUAL 0780 5-8H	PERMITTED	476' FSL 187' FWL	9		
O	MUTUAL 0780 6-8H	PERMITTED	489' FSL 194' FWL	9		
P	MUTUAL 0780 7-8H	PERMITTED	502' FSL 200' FWL	9		
Q	MUTUAL 0780 8-8H	PERMITTED	515' FSL 207' FWL	9		

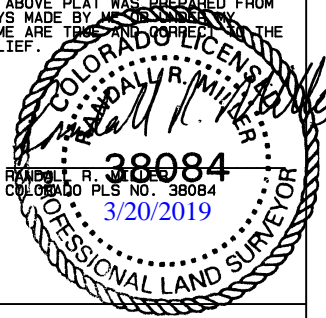
LEGEND	
90° SYMBOL	└
SECTION CORNER	▲
PROPOSED WELLHEAD	●
TARGET BOTTOM HOLE	○
LANDING POINT	◇
KICK OFF POINT	◊
FEDERAL LEASE LINE	--- --
STATE LEASE LINE	--- --

T7N, R80W, 6th P.M.



NAD 83 (SURFACE LOCATION)
Latitude=40.58602°N Longitude=106.38734°W
STATE PLANE NAD 83 (CO. NORTH)
N=1457560.47 E=2753550.05
NAD 83 (KICK OFF POINT)
Latitude=40.58510°N Longitude=106.38370°W
STATE PLANE NAD 83 (CO. NORTH)
N=1457214.60 E=2754557.73
NAD 83 (LANDING POINT)
LATITUDE=40.58632°N LONGITUDE=106.38323°W
STATE PLANE NAD 83 (CO. NORTH)
N=1457660.40 E=2754692.73
NAD 83 (TARGET BOTTOM HOLE)
LATITUDE=40.61487°N LONGITUDE=106.38253°W
STATE PLANE NAD 83 (CO. NORTH)
N=1468058.91 E=2754988.63

THIS IS TO CERTIFY THAT THE ABOVE PLAT WAS PREPARED FROM FIELD NOTES OF ACTUAL SURVEYS MADE BY ME OR UNDER MY SUPERVISION AND THAT THE SAME ARE TRUE AND CORRECT TO THE BEST OF MY KNOWLEDGE AND BELIEF.



SandRidge Exploration & Production, LLC.

GREGORY 0780 7-9H4
 WELL LOCATION PLAT - EXHIBIT
 shown in the SW1/4SW1/4 of Section 9, T7N, R80W,
 6th P.M., Jackson County, Colorado.

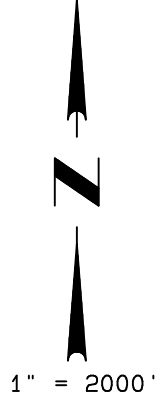
BASIS OF BEARINGS:
 US STATE PLANE 1983
 CO NORTH 0501 GRID

BASIS OF ELEVATION

PDOP=1.764

NAVDB8 Computed using GEODID2B as measured using a combination of Static and Kinematic GPS based on an OPUS Solution Report.

SUBSURFACE LOCATIONS PROVIDED BY SandRidge Exploration & Production, LLC. NOT FIELD VERIFIED



NORTH PARK ENGINEERING & CONSULTING, INC.
 P.O. BOX 395
 WALDEN, CO 80480
 (970) 723-3725

DATE OF FIELD WORK: AUG 3, 2017	DRAWING COMPLETION: MAR 20, 2019
SURVEYED BY: LEVI KURTZER	DRAWN BY: ALEX LAWTON
CHECKED BY: RANDALL MILLER	

T7N, R80W, 6th P.M.

SandRidge Exploration & Production, LLC.

Surface Location GREGORY 0780 7-9H4 as shown in the SW1/4SW1/4 of Section 9, T7N, R80W, 6th P.M., Jackson County, Colorado.

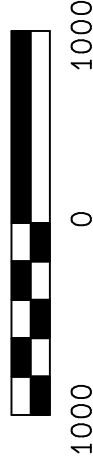
BASIS OF BEARINGS:
US STATE PLANE 1983
CO NORTH 0501 GRID

BASIS OF ELEVATION

SPOT ELEVATION AT THE NW CORNER OF SECTION 9, T6N, R80W, 6TH PM, TAKEN FROM THE COALMONT QUADRANGLE, USGS 7.5 MIN QUAD (TOPOGRAPHIC MAP) WITH SAID ELEVATION MARKED AS BEING 8222 FEET.

SURFACE USE
GRAZING/RANGELAND

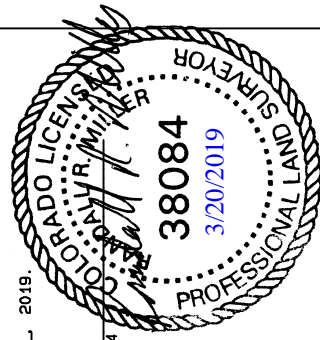
GRAPHIC SCALE 1"=1000'



I, RANDALL R. MILLER, BEING A REGISTERED LAND SURVEYOR IN THE STATE OF COLORADO, DO HEREBY CERTIFY THAT THIS PLAT WAS MADE BY ME AND/OR UNDER MY DIRECT SUPERVISION AND THAT IT IS ACCURATE TO THE BEST OF MY KNOWLEDGE.

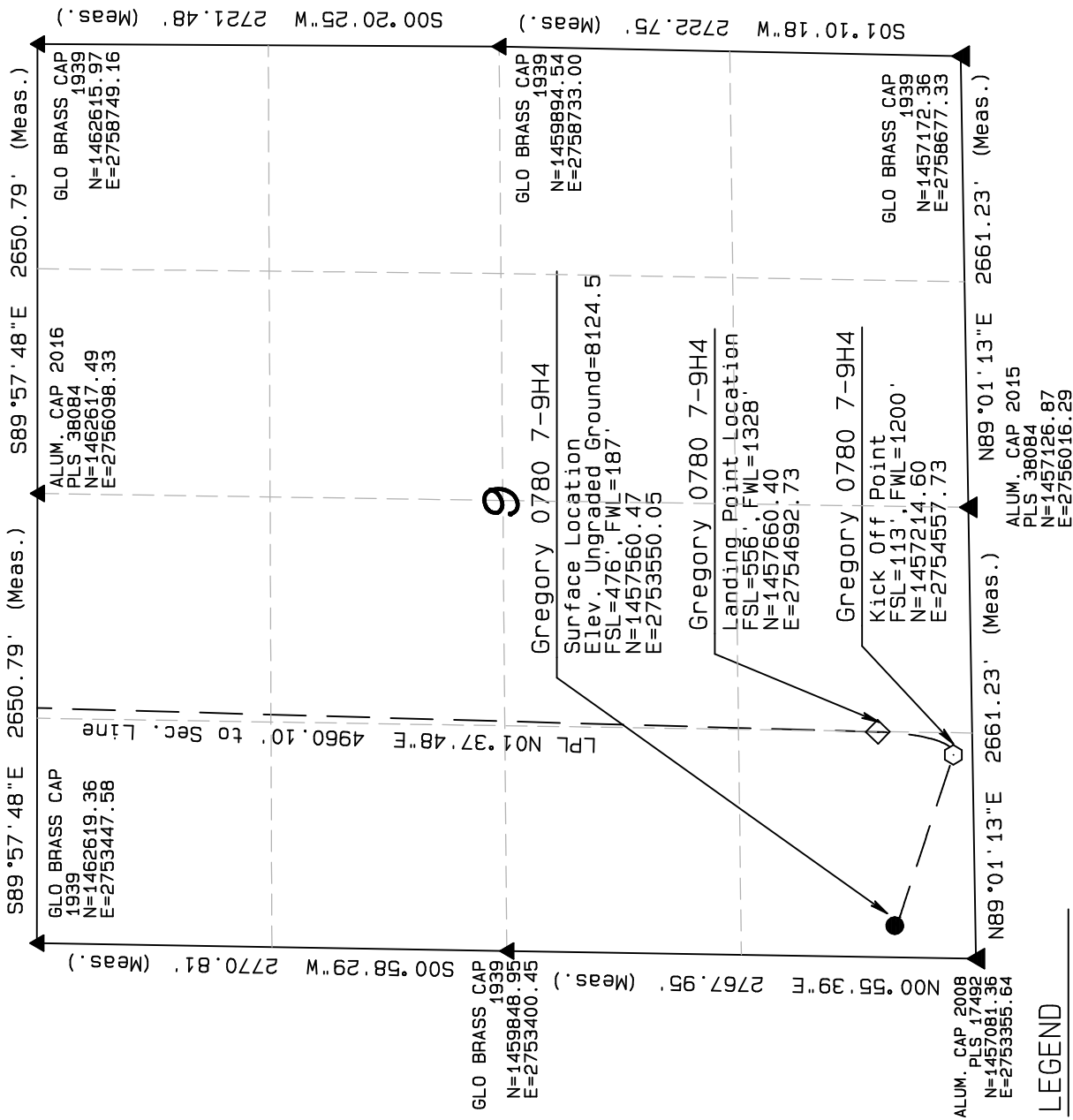
DATED THIS _____ DAY OF _____ 2019.

RANDALL R. MILLER, COLORADO PLS NO. 38084



NORTH PARK ENGINEERING & CONSULTING, INC.
P.O. BOX 395
WALDEN, CO 80480
(970) 723-3725

DATE OF FIELD WORK: 8/3/2017 DRAWING COMPLETION: 3/20/2019
SURVEYED BY: LEVI KURTZER
DRAWN BY: ALEX LAWTON
CHECKED BY: RANDALL MILLER



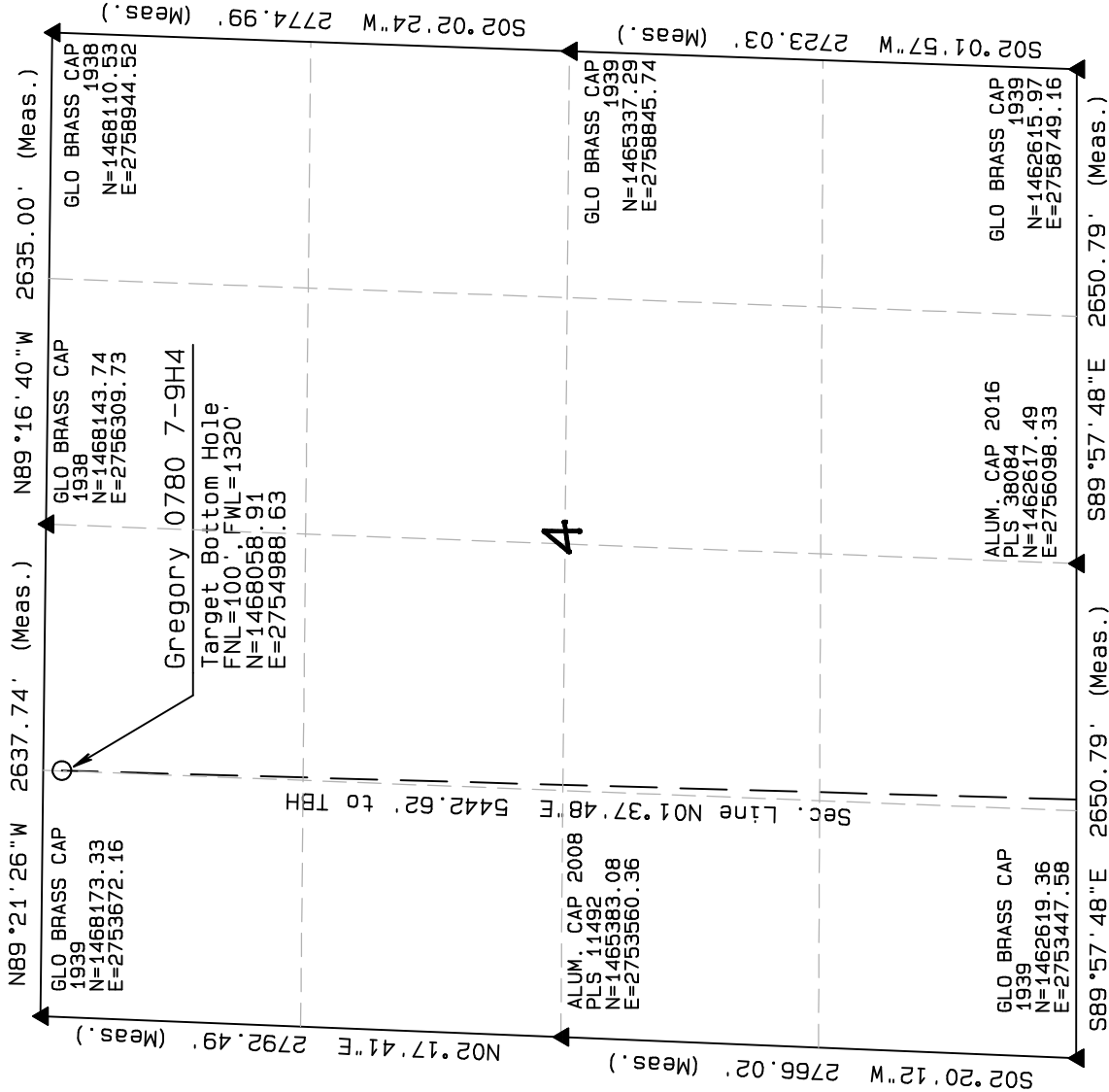
NAD 83 (KOP-KICK OFF PT)	NAD 83 (SURFACE LOCATION)
LATITUDE=40.58510°N LONGITUDE=106.38370°W	LATITUDE=40.58602°N LONGITUDE=106.38734°W PDOOP=1.754
NAD 83 (TARGET BOTTOM HOLE)	NAD 83 (LANDING POINT LOCATION)
LATITUDE=40.61487°N LONGITUDE=106.38253°W	LATITUDE=40.58632°N LONGITUDE=106.38323°W

LEGEND

- ▲ FOUND CORNER
- PROPOSED WELL
- ◊ PROPOSED KOP
- ◊ PROPOSED LPL
- PROPOSED BHL

T7N, R80W, 6th P.M.

SandRidge Exploration & Production, LLC.



Bottom Hole Location
 GREGORY 0780 7-9H4 as shown in the NW1/4NW1/4 of Section 4, T7N, R80W, 6th P.M., Jackson County, Colorado.

BASIS OF BEARINGS:

US STATE PLANE 1983
 CO NORTH 0501 GRID

BASIS OF ELEVATION

SPOT ELEVATION AT THE NW CORNER OF SECTION 9, T6N, R80W, 6TH PM, TAKEN FROM THE COALMONT QUADRANGLE, USGS 7.5 MIN QUAD (TOPOGRAPHIC MAP) WITH SAID ELEVATION MARKED AS BEING 8222 FEET.

SURFACE USE
 GRAZING/RANGELAND

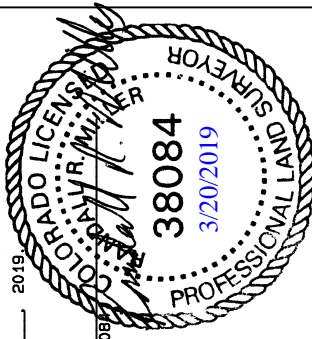
GRAPHIC SCALE 1"=1000'



1000 0 1000

I, RANDALL R. MILLER, BEING A REGISTERED LAND SURVEYOR IN THE STATE OF COLORADO, DO HEREBY CERTIFY THAT THIS PLAT WAS MADE BY ME AND/OR UNDER MY DIRECT SUPERVISION AND THAT IT IS ACCURATE TO THE BEST OF MY KNOWLEDGE.

DATED THIS _____ DAY OF _____ 2019



RANDALL R. MILLER, COLORADO PLS NO. 38084

LEGEND

- ▲ FOUND CORNER
- PROPOSED WELL
- ◊ PROPOSED KOP
- ◇ PROPOSED LPL
- PROPOSED BHL

NAD 83 (KOP-KICK OFF PT)	NAD 83 (SURFACE LOCATION)
LATITUDE=40.58510°N	LATITUDE=40.58602°N
LONGITUDE=106.38370°W	LONGITUDE=106.38734°W
	PDOP=1.754
NAD 83 (TARGET BOTTOM HOLE)	NAD 83 (LANDING POINT LOCATION)
LATITUDE=40.61487°N	LATITUDE=40.58632°N
LONGITUDE=106.38253°W	LONGITUDE=106.38323°W

NORTH PARK ENGINEERING & CONSULTING, INC.

P.O. BOX 395
 WALDEN, CO 80480
 (970) 723-3725

DATE OF FIELD WORK: 8/3/2017 DRAWING COMPLETION: 3/20/2019
 SURVEYED BY: LEVI KURTZER
 DRAWN BY: ALEX LAWTON
 CHECKED BY: RANDALL MILLER