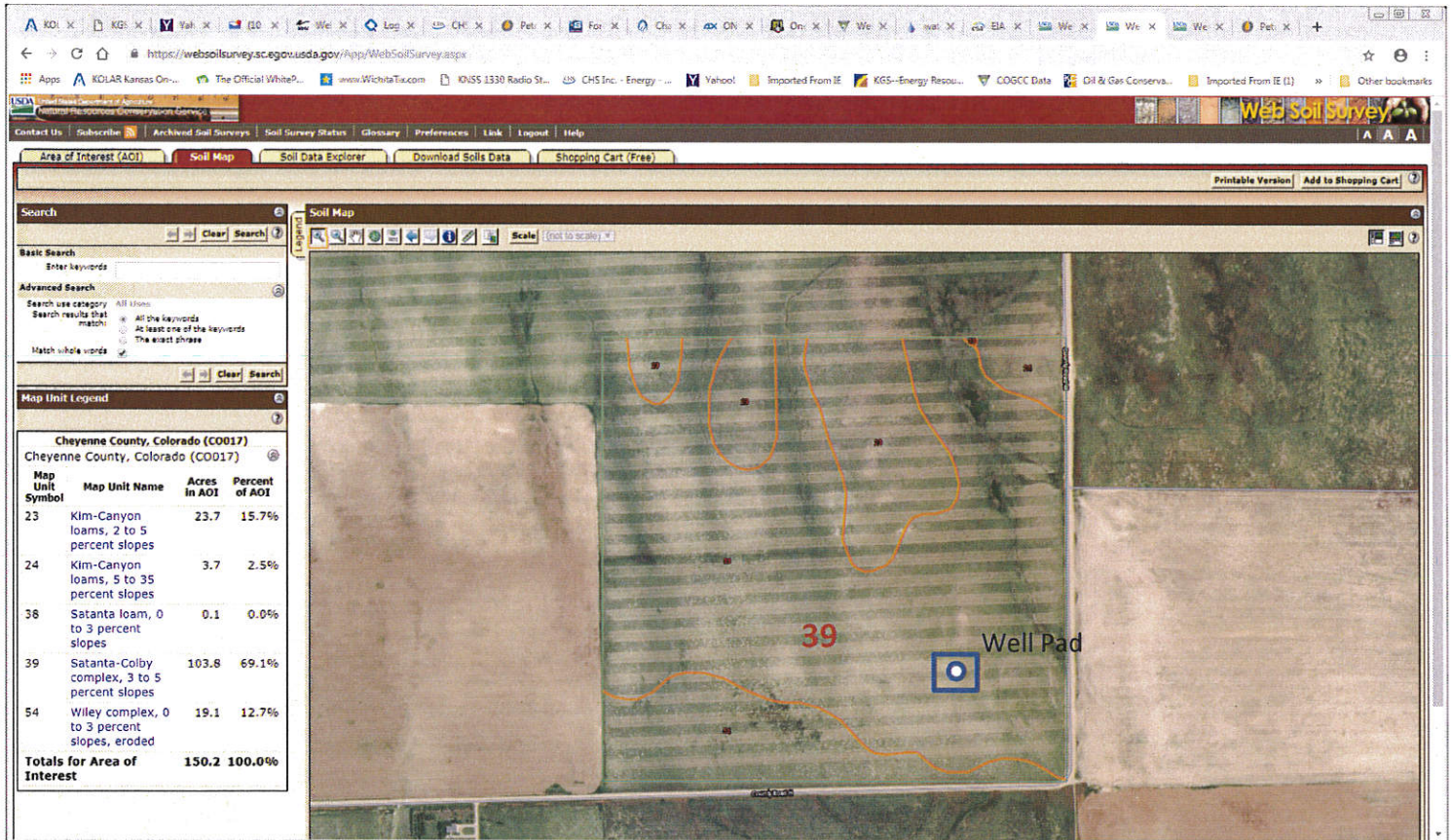


2.

McCoy Petroleum Corporation
ALC 1545 #1-27
SE SE, Sec 27-15s-45w
Cheyenne County, CO
(CO-017)

NRCS Soils in SE/4:
Map Symbols: #39



Cheyenne County, Colorado

39—Satanta-Colby complex, 3 to 5 percent slopes

Plant Species: Western wheatgrass (15%), Green needlegrass (10%), (Prairie sandreed (5%), Miscellaneous perennial forbs (5%), Blue grama (-%)

Map Unit Setting

- National map unit symbol: 354v
- Elevation: 3,000 to 6,500 feet
- Mean annual precipitation: 12 to 25 inches
- Mean annual air temperature: 45 to 57 degrees F
- Frost-free period: 130 to 200 days
- Farmland classification: Prime farmland if irrigated

Map Unit Composition

- Satanta and similar soils: 50 percent
- Colby and similar soils: 20 percent
- Minor components: 30 percent
- Estimates are based on observations, descriptions, and transects of the mapunit.

Description of Satanta

Setting

- Landform: Paleoterraces
- Down-slope shape: Linear
- Across-slope shape: Linear
- Parent material: Alluvium

Typical profile

- *A - 0 to 8 inches:* loam
- *Bt - 8 to 16 inches:* clay loam
- *Bk - 16 to 60 inches:* loam

Properties and qualities

- *Slope:* 3 to 5 percent
- *Depth to restrictive feature:* More than 80 inches
- *Natural drainage class:* Well drained
- *Runoff class:* Low
- *Capacity of the most limiting layer to transmit water (Ksat):* Moderately high to high (0.60 to 2.00 in/hr)
- *Depth to water table:* More than 80 inches
- *Frequency of flooding:* None
- *Frequency of ponding:* None
- *Calcium carbonate, maximum in profile:* 10 percent
- *Available water storage in profile:* High (about 9.8 inches)

Interpretive groups

- *Land capability classification (irrigated):* 2e
- *Land capability classification (nonirrigated):* 3e
- *Hydrologic Soil Group:* B
- *Ecological site:* Loamy Plains (R067BY002CO)
- *Hydric soil rating:* No

Description of Colby**Setting**

- *Landform:* Hills
- *Landform position (three-dimensional):* Side slope
- *Down-slope shape:* Linear
- *Across-slope shape:* Linear
- *Parent material:* Loess

Typical profile

- *A - 0 to 3 inches:* silt loam
- *C - 3 to 60 inches:* silt loam

Properties and qualities

- *Slope:* 3 to 5 percent
- *Depth to restrictive feature:* More than 80 inches
- *Natural drainage class:* Well drained
- *Runoff class:* Low
- *Capacity of the most limiting layer to transmit water (Ksat):* Moderately high to high (0.57 to 2.00 in/hr)
- *Depth to water table:* More than 80 inches
- *Frequency of flooding:* None
- *Frequency of ponding:* None
- *Calcium carbonate, maximum in profile:* 15 percent
- *Available water storage in profile:* High (about 10.8 inches)

Interpretive groups

- *Land capability classification (irrigated):* 4e
- *Land capability classification (nonirrigated):* 4e
- *Hydrologic Soil Group:* B
- *Ecological site:* Loamy Plains (R067BY002CO)
- *Hydric soil rating:* No

Minor Components**Manter**

- *Percent of map unit:* 15 percent

Sampson

- *Percent of map unit:* 15 percent