



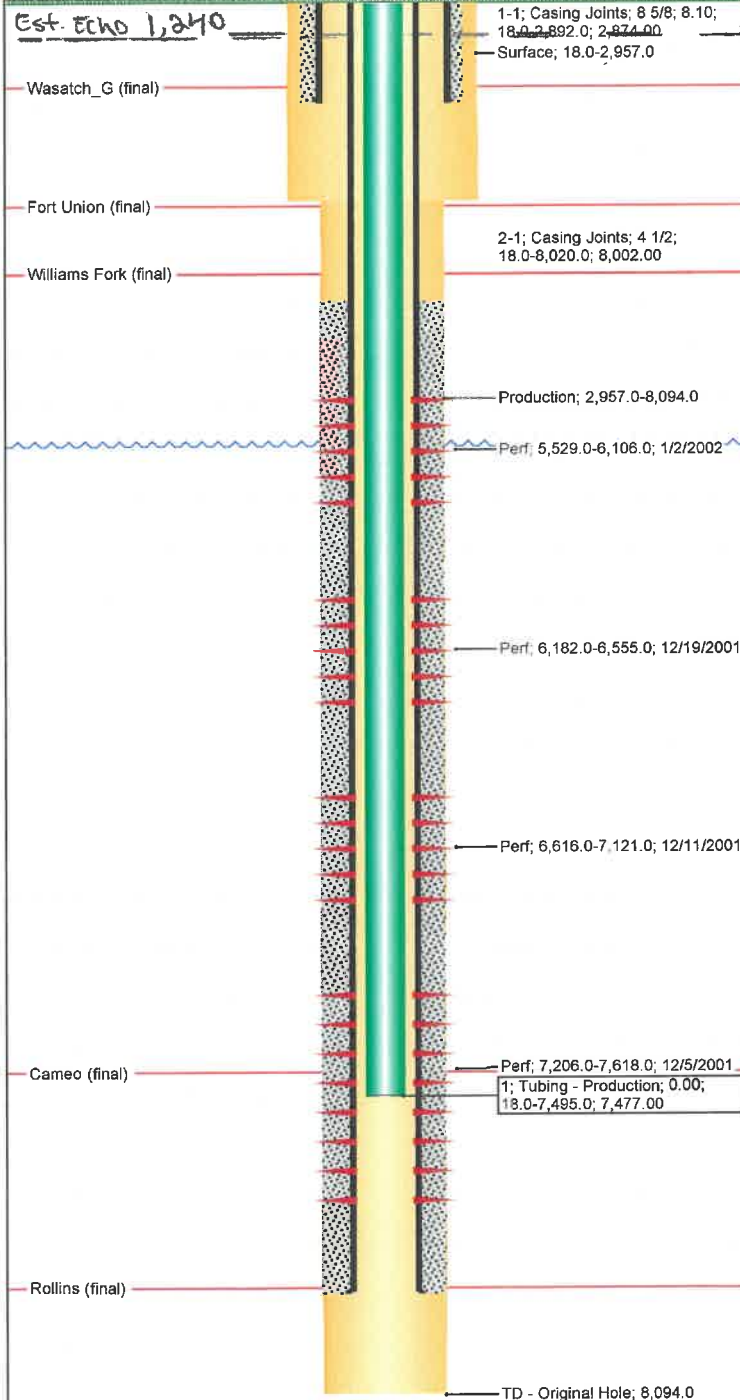
Caerus COGCC Wellbore Diagram

Well Name: Unocal 23-4D

API/UWI 05045077720000	Surface Legal Location NESW 4 6S 96W	Field Name Grand Valley	License #	State/Province CO	Well Configuration Type Directional
Original KB Elevation (ft) 5,796.00	KB-Tubing Head Distance (ft)	Spud Date 10/15/2001 00:00	Rig Release Date 11/3/2001 00:00	PBTD (All) (ftKB) Original Hole - 0.0	Total Depth All (TVDD) (ftKB)

Directional, Original Hole, 3/28/2019 3:49:52 PM

Vertical schematic (actual)



Casing Strings

Csg Des	Wellbore Size (in)	OD (in)	Wt/Len (lb/ft)	Grade	Top Thread	Set Depth (ftKB)
Surface	12 1/4	8 5/8	24.00	J-55		2,892.0
Production	7 7/8	4 1/2				8,020.0

Perforations

Date	Top (ftKB)	Btm (ftKB)	Linked Zone
1/2/2002	5,529.0	6,106.0	Mesaverde, Original Hole
12/19/2001	6,182.0	6,555.0	Mesaverde, Original Hole
12/11/2001	6,616.0	7,121.0	Mesaverde, Original Hole
12/5/2001	7,206.0	7,618.0	Mesaverde, Original Hole

Cement Stages

1, 5,294.0-8,020.0ftKB

Description	String	Start Date	End Date	Top Depth (ftKB)	Btm (ftKB)
Production Casing Cement	Production, 8,020.0ftKB			5,294.0	8,020.0

Cement Fluids

Fluid Type	Amount (sacks)	Yield (ft ³ /sack)
Tail	800	

1, 18.0-2,892.0ftKB

Description	String	Start Date	End Date	Top Depth (ftKB)	Btm (ftKB)
Surface Casing Cement	Surface, 2,892.0ftKB	10/19/2001	10/19/2001	18.0	2,892.0

Cement Fluids

Fluid Type	Amount (sacks)	Yield (ft ³ /sack)
Lead	504	2.31
Fluid Type	Amount (sacks)	Yield (ft ³ /sack)
Tail	476	1.16

Formations

Formation Name	Final Top MD (ftKB)	Prog Top MD (ftKB)
Wasatch_G	2,464.0	
Fort Union	3,030.0	
Williams Fork	4,636.0	
Cameo	7,423.0	
Rollins	7,997.0	

Echometer Test Data

Date	Upkick Depth (ft)	Downkick Depth	Diagnosis
2/4/2019		1,240.00	Shot estimates fluid level on Bradenhead



Caerus COGCC Wellbore Diagram

Well Name: Unocal 23-4D

API/UWI 05045077720000	Surface Legal Location NESW 4 6S 96W	Field Name Grand Valley	License #	State/Province CO	Well Configuration Type Directional
Original KB Elevation (ft) 5,796.00	KB-Tubing Head Distance (ft)	Spud Date 10/15/2001 00:00	Rig Release Date 11/3/2001 00:00	PSTD (Alt) (ftKB) Original Hole - 0.0	Total Depth Alt (TVD) (ftKB)

Directional, Original Hole, 3/28/2019 3:49:52 PM

Vertical schematic (actual)

Tubing Strings

Tubing Description Tubing - Production	Run Date 12/6/2001	String Length (ft) 7,477.00	Set Depth (ft) 7,495.0				
Item Des	Jts	Make	Model	OD (in)	Wt (lb/ft)	Grade	Len (ft)
				2 3/8			7,477.00

