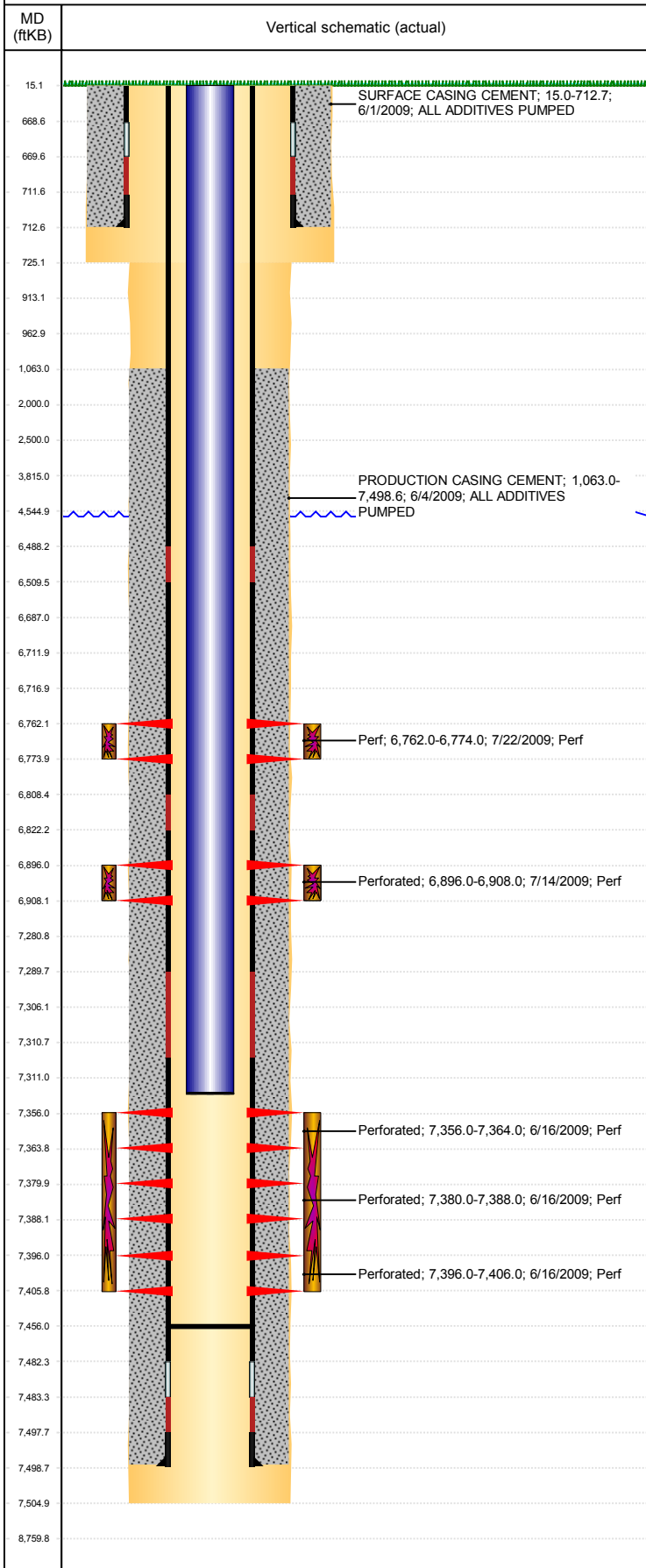


Well Name: GUTTERSEN STATE D14-23

VERTICAL, ORIGINAL HOLE, 4/1/2019 10:08:02 AM



Well Header									
API 05-123-28199		Business Unit DJ BASIN		District 15		Well Config VERTICAL			
KB - GL / MSL (ft... 15.00		Spud Date 5/31/2009		P & A Date		Well Production Status SI			SoRT No
Comment DISCREPANCY W/ CD PERFS, ST 6896-6942', ENTERED IN WV 6896-6908', NO DOCS IN FILE OR NOTES IN WV TO CONFIRM DEPTHS.									
Surface Location (Congressional)									
Qtr 3 SE	Qtr 4 SE	Section 14	Twnshp 3	Twnsh... N	Range 64	Rng E... W	Actual Latitude (°) 40.22149496	Actual Longitude (°) -104.51358606	
Wellbore Sections									
Section Des			Size (in)			Act Top, MD (ftKB)		Act Btm, MD (ftKB)	
SURFACE			12 1/4			15		725	
PRODUCTION			7 7/8			725		7,505	
Casing Strings									
Csg Des		Run Date		OD (in)	Wt/Len (lb/ft)	Grade	Top, MD (ftKB)	MD (ftKB)	
Surface		6/1/2009		8 5/8	24.00	J-55	15.0	712.7	
Production		6/4/2009		4 1/2	11.60	M-80	15.0	7,498.6	
Cement									
Des				Start Date		Top (ftKB)		Btm (ftKB)	
SURFACE CASING CEMENT				6/1/2009		15.0		712.7	
PRODUCTION CASING CEMENT				6/4/2009		1,063.0		7,498.6	
Zone Statuses									
Zone Name	Status Date	Status	Fluid Type	Job				Prod Method	
J SAND	8/3/2009	PR	Water	DRILLING/COMPLETION - ORIGINAL, 5/31/2009...				Flowing	
J SAND	9/22/2016	SI							
NIOBRARA	7/23/2009	PR							
NIOBRARA	8/27/2010	PR	Water					Flowing	
CODELL	8/27/2010	PR	Water						
CODELL	9/22/2016	SI							
Perforation Data									
Linked Zone		Bnch/Stg	Entered Shot Total	Top (ftKB)		Btm (ftKB)		Date	
NIOBRARA, ORIGINAL HOLE		B	24	6,762.00		6,774.00		7/22/2009	
CODELL, ORIGINAL HOLE			48	6,896.00		6,908.00		7/14/2009	
J SAND, ORIGINAL HOLE		01	32	7,356.00		7,364.00		6/16/2009	
J SAND, ORIGINAL HOLE		02	32	7,380.00		7,388.00		6/16/2009	
J SAND, ORIGINAL HOLE		03	32	7,396.00		7,406.00		6/16/2009	
Stimulation Intervals									
Zone			Start Date			Top (ftKB)		Btm (ftKB)	
NIOBRARA, ORIGINAL HOLE			7/22/2009			6,762.0		6,774.0	
CODELL, ORIGINAL HOLE			7/14/2009			6,896.0		6,908.0	
			7/14/2009			6,896.0		6,908.0	
CODELL, ORIGINAL HOLE			7/22/2009			6,896.0		6,908.0	
J SAND, ORIGINAL HOLE			7/14/2009			7,356.0		7,406.0	
			7/14/2009			8,760.0		7,406.0	
Other In Hole									
Run Date		Des				OD (in)	Top (ftKB)	Btm (ftKB)	
Logs									
Date		Type				Top, MD (ftKB)		Btm, MD (ftKB)	
6/3/2009		Caliper/Comp. Density/Neutron/GR/SP/ML				2,570.0		7,503.0	
6/3/2009		DIL/GR/SP/Caliper				712.0		7,503.0	
6/10/2009		CBL/CCL/GR				915.0		7,479.0	
8/30/2017		GYRO				0.0		7,300.0	
Plug Back Total Depths									
Date		Type		Com				Depth (ftKB)	
6/10/2009		FLOAT COLLAR						7,479.0	
1/20/2010		PLUG REMNANTS		50' OF RAT HOLE				7,456.0	