



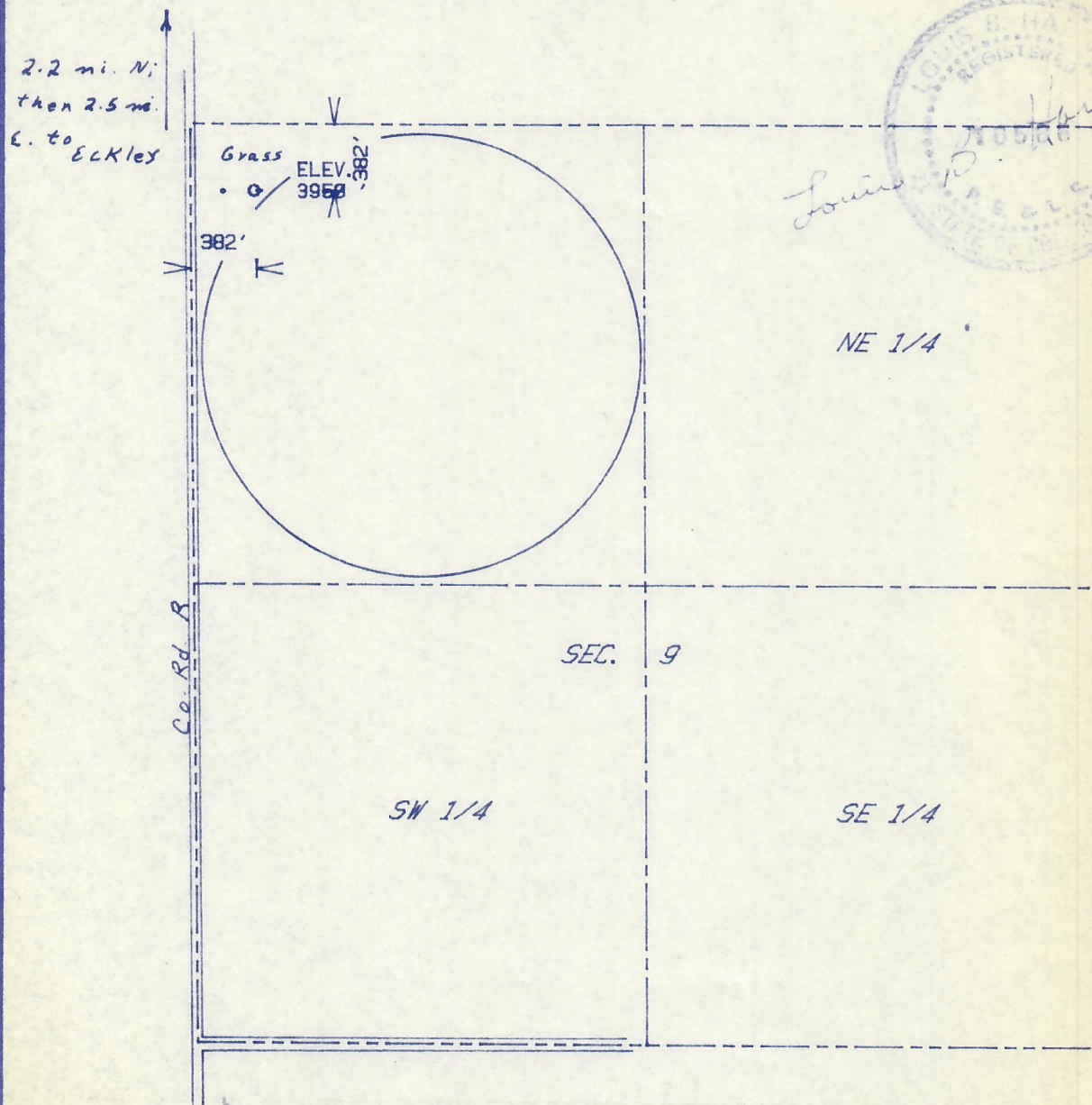
00005875

RECEIVED

MAR 21 1985

COLO. OIL & GAS CONS. COMM.

The accompanying plat is an accurate representation showing the location of a proposed well. This location may be described as a point 382 feet south of the north line, and 382 feet east of the west line of Section 9, Township 1 N Range 46 W of the 6th P.M., YUMA County, COLORADO. The surface elevation at this point is 3950 feet m.s.l.

**HARMON
ENGINEERING
SERVICES**

PLETCHER #1-9

MIDLANDS GAS CORPORATION

YUMA CO., COLORADO

14 FEB. 1985