

T9N, R59W, 6th P.M.

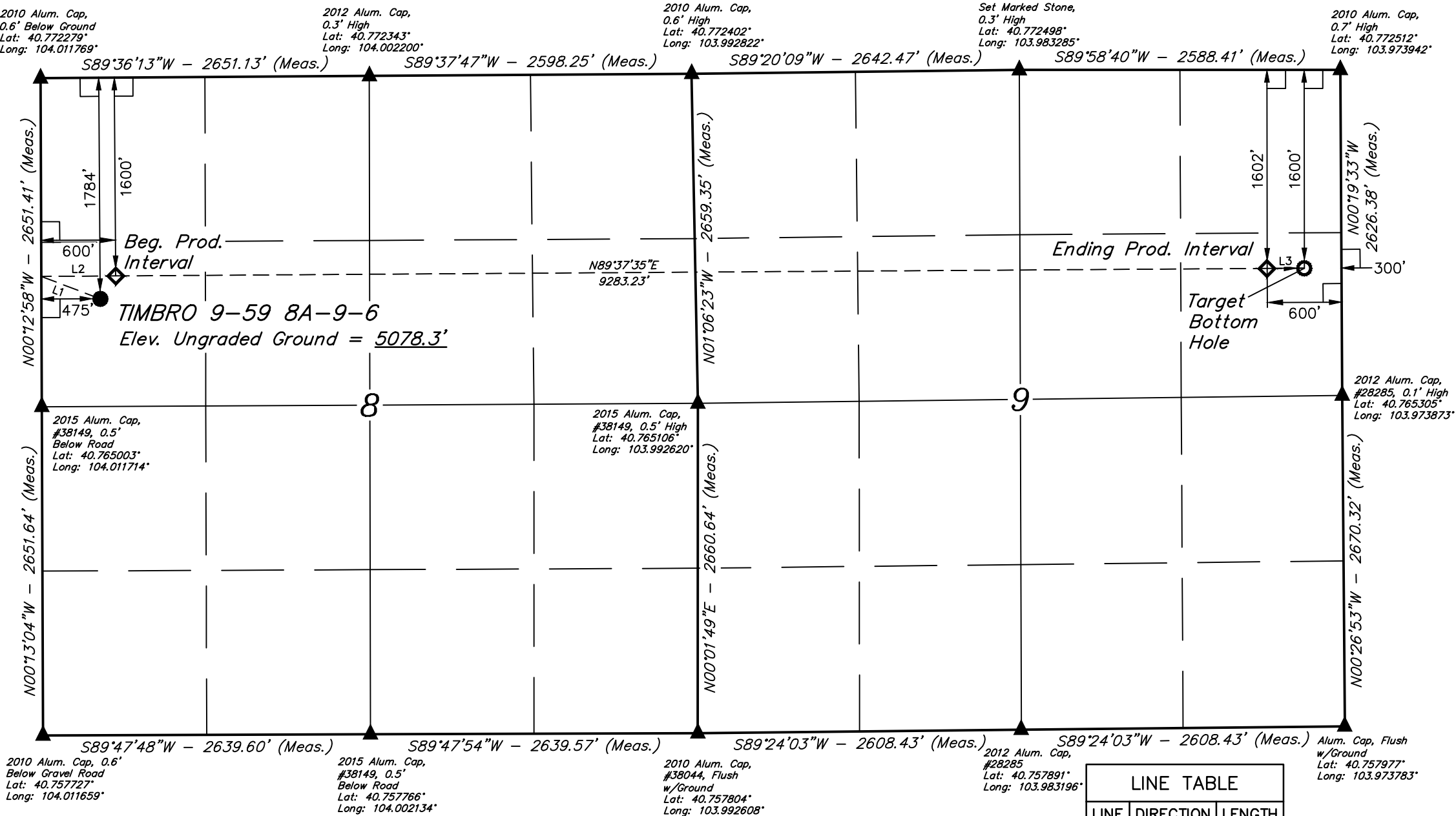
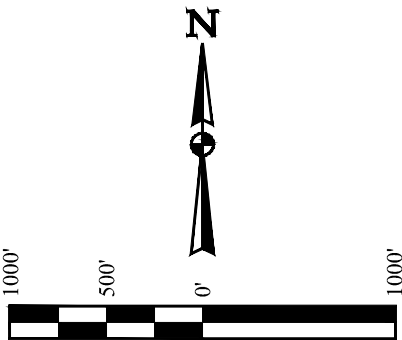
VERDAD RESOURCES LLC

TIMBRO 9-59 8A-9-6  
SW 1/4 NW 1/4, SECTION 8, T9N, R59W, 6th P.M.  
WELD COUNTY, COLORADO

BASIS OF BEARINGS

BASIS OF ELEVATION

SPOT ELEVATION LOCATED AT THE NORTHEAST CORNER OF SECTION 15, T9N, R58W, 6th P.M. TAKEN FROM THE GATEHOOK SPRING, QUADRANGLE, COLORADO, WELD COUNTY, 7.5 MINUTE QUAD (TOPOGRAPHIC MAP) PUBLISHED BY THE UNITED STATES DEPARTMENT OF THE INTERIOR, GEOLOGICAL SURVEY. SAID ELEVATION IS MARKED AS BEING 4679 FEET.



LINE TABLE		
LINE	DIRECTION	LENGTH
L1	N69°12'41"W	508.53'
L2	N89°37'35"E	600.00'
L3	N89°37'35"E	300.00'

PDOP = 1.2

SURFACE LOCATION 1784' FNL 475' FWL	BEG. PROD. INTERVAL 1600' FNL 600' FWL	ENDING PROD. INTERVAL 1602' FNL 600' FEL	TARGET BOTTOM HOLE 1600' FNL 300' FEL
NAD 83 (SURFACE LOCATION)	NAD 83 (BEG. PROD. INTERVAL)	NAD 83 (ENDING PROD. INTERVAL)	NAD 83 (TARGET BOTTOM HOLE)
LATITUDE = 40°46'02.63" (40.767396)	LATITUDE = 40°46'04.45" (40.767903)	LATITUDE = 40°46'05.21" (40.768113)	LATITUDE = 40°46'05.23" (40.768120)
LONGITUDE = 104°00'36.07" (104.010019)	LONGITUDE = 104°00'34.45" (104.009571)	LONGITUDE = 103°58'33.84" (103.976066)	LONGITUDE = 103°58'29.94" (103.974983)
NAD 27 (SURFACE LOCATION)	NAD 27 (BEG. PROD. INTERVAL)	NAD 27 (ENDING PROD. INTERVAL)	NAD 27 (TARGET BOTTOM HOLE)
LATITUDE = 40°46'02.67" (40.767409)	LATITUDE = 40°46'04.50" (40.767915)	LATITUDE = 40°46'05.25" (40.768126)	LATITUDE = 40°46'05.28" (40.768132)
LONGITUDE = 104°00'34.26" (104.009515)	LONGITUDE = 104°00'32.64" (104.009067)	LONGITUDE = 103°58'32.02" (103.975562)	LONGITUDE = 103°58'28.13" (103.974479)
STATE PLANE NAD 83 (CO. NORTH)	STATE PLANE NAD 83 (CO. NORTH)	STATE PLANE NAD 83 (CO. NORTH)	STATE PLANE NAD 83 (CO. NORTH)
N: 1525875.29 E: 3412706.72	N: 1526061.95 E: 3412827.79	N: 1526296.29 E: 3422105.98	N: 1526303.86 E: 3422405.82
STATE PLANE NAD 27 (CO. NORTH)	STATE PLANE NAD 27 (CO. NORTH)	STATE PLANE NAD 27 (CO. NORTH)	STATE PLANE NAD 27 (CO. NORTH)
N: 525873.16 E: 2412857.19	N: 526059.82 E: 2412978.26	N: 526294.21 E: 2422256.67	N: 526301.78 E: 2422556.51

CERTIFICATE

THIS IS TO CERTIFY THAT THE ABOVE PLAT WAS PREPARED FROM FIELD NOTES OF ACTUAL SURVEYS MADE BY ME OR UNDER MY SUPERVISION, AND THAT THE SAME ARE TRUE AND CORRECT TO THE BEST OF MY KNOWLEDGE AND BELIEF.

REGISTERED LAND SURVEYOR  
REGISTRATION NO. 28285  
STATE OF COLORADO  
03-25-19

REV: 3 03-25-19 C.IVIE (SURFACE LOCATION MOVE)



UELS, LLC  
Corporate Office \* 85 South 200 East  
Vernal, UT 84078 \* (435) 789-1017

SURVEYED BY	RYAN WILLIAMS, O.R.	02-15-19	SCALE
DRAWN BY	T.L.L.	01-31-18	1" = 1000'

WELL LOCATION PLAT

LEGEND:

- 90° SYMBOL
- PROPOSED WELLHEAD.
- PRODUCTION INTERVAL.
- TARGET BOTTOM HOLE.
- SECTION CORNERS LOCATED. (NAD 83)