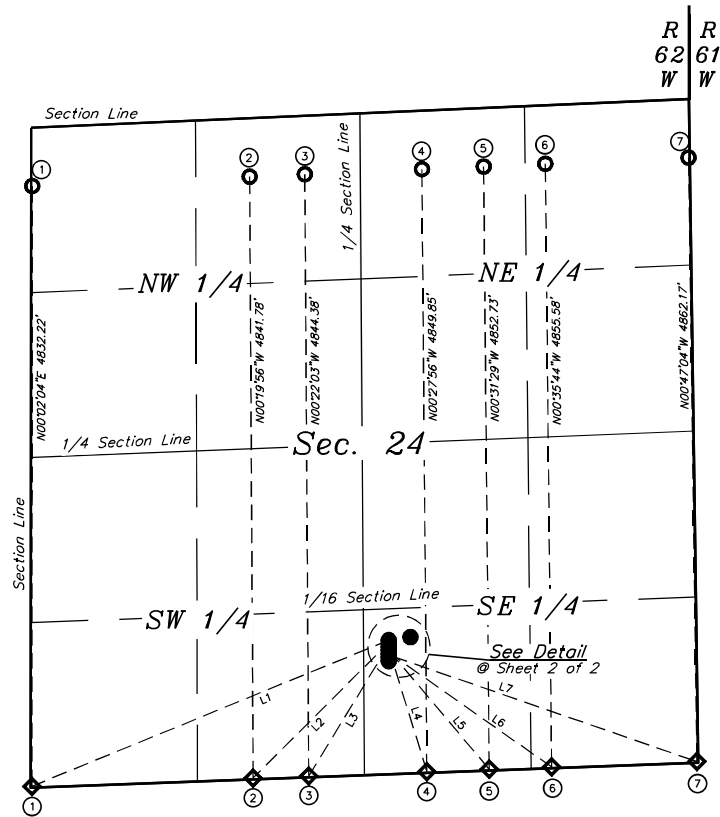
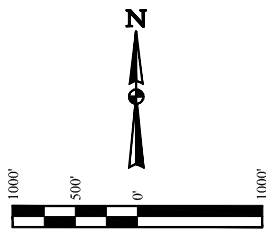


LEGEND:

- ◻ = 90° SYMBOL
- = PROPOSED WELLHEAD
- ◆ = TARGET 1 LOCATION
- = TARGET BOTTOM HOLE



LINE TABLE		
LINE	DIRECTION	LENGTH
L1	S67°43'08"W	3103.84'
L2	S45°00'44"W	1542.66'
L3	S31°25'39"W	1235.17'
L4	S17°04'38"E	1044.68'
L5	S40°06'26"E	1255.11'
L6	S54°54'40"E	1602.62'
L7	S70°55'08"E	2624.05'

Sheet 1 of 2

#	WELL NAME	SHL FOOTAGE	SHL LAT (NAD 83)	SHL LONG (NAD 83)	SHL PDOP	SHL ELEV.	SHL 1/4	1/4
1	STATE ANTELOPE E-A-24HNB	1079' FSL 2476' FEL	N 40.381752°	W 104.270582°	1.2	4531.7'	SWSE	
2	STATE ANTELOPE J24-F21-24HNB	1059' FSL 2477' FEL	N 40.381698°	W 104.270583°	1.2	4531.7'	SWSE	
3	STATE ANTELOPE O24-K21-24HNB	1039' FSL 2477' FEL	N 40.381643°	W 104.270583°	1.2	4531.7'	SWSE	
4	STATE ANTELOPE O34-K31-24HNB	1019' FSL 2477' FEL	N 40.381588°	W 104.270584°	1.2	4531.8'	SWSE	
5	STATE ANTELOPE T34-P31-24HNB	999' FSL 2477' FEL	N 40.381533°	W 104.270584°	1.2	4531.8'	SWSE	
6	STATE ANTELOPE T44-P41-24HNB	979' FSL 2478' FEL	N 40.381478°	W 104.270585°	1.2	4531.8'	SWSE	
7	STATE ANTELOPE Y-U-24HNB	959' FSL 2478' FEL	N 40.381423°	W 104.270586°	1.2	4531.9'	SWSE	
8	EXISTING STATE ANTELOPE 34-24	1097' FSL 2301' FEL	N 40.381816°	W 104.269953°	1.2	4531.7'	SWSE	

**BONANZA CREEK ENERGY
OPERATING COMPANY, LLC**

STATE ANTELOPE 34-24 PAD
SW 1/4 SE 1/4, SECTION 24, T5N, R62W, 6th P.M.
WELD COUNTY, COLORADO

SURVEYED BY	JAMES FRESHWATER, N.W.	09-06-18	SCALE
DRAWN BY	K.M.R.	10-29-18	1" = 1000'

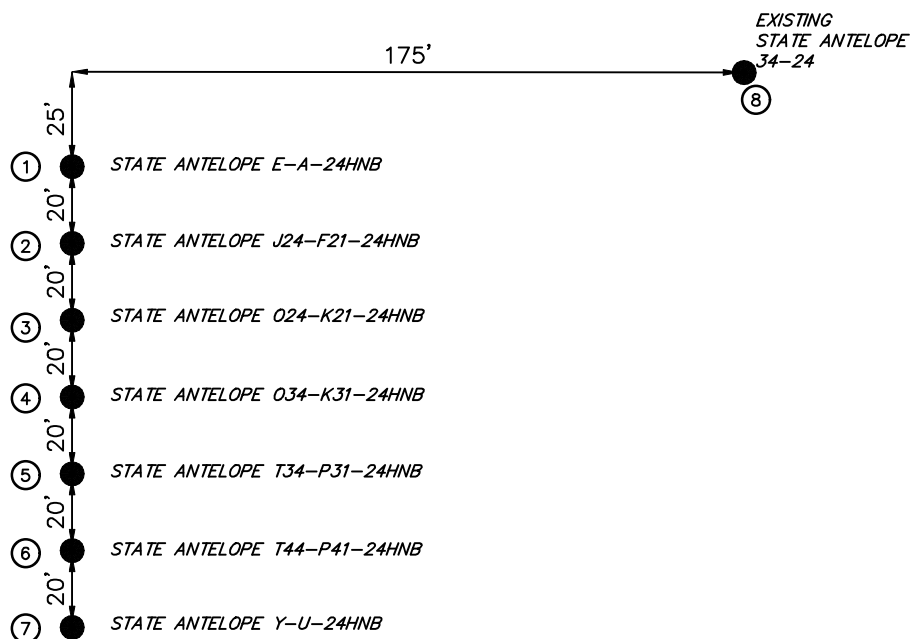
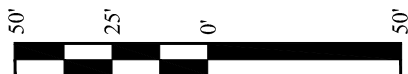
MULTI-WELL PLAN



UELS, LLC
Corporate Office * 85 South 200 East
Vernal, UT 84078 * (435) 789-1017

LEGEND:

● = SURFACE LOCATION.



Sheet 2 of 2

#	WELL NAME	SHL FOOTAGE			SHL LAT (NAD 83)	SHL LONG (NAD 83)	SHL PDOP	SHL ELEV.	SHL 1/4 1/4	
1	STATE ANTELOPE E-A-24HNB	1079'	FSL	2476'	FEL	N 40.381752°	W 104.270582°	1.2	4531.7'	SWSE
2	STATE ANTELOPE J24-F21-24HNB	1059'	FSL	2477'	FEL	N 40.381698°	W 104.270583°	1.2	4531.7'	SWSE
3	STATE ANTELOPE O24-K21-24HNB	1039'	FSL	2477'	FEL	N 40.381643°	W 104.270583°	1.2	4531.7'	SWSE
4	STATE ANTELOPE O34-K31-24HNB	1019'	FSL	2477'	FEL	N 40.381588°	W 104.270584°	1.2	4531.8'	SWSE
5	STATE ANTELOPE T34-P31-24HNB	999'	FSL	2477'	FEL	N 40.381533°	W 104.270584°	1.2	4531.8'	SWSE
6	STATE ANTELOPE T44-P41-24HNB	979'	FSL	2478'	FEL	N 40.381478°	W 104.270585°	1.2	4531.8'	SWSE
7	STATE ANTELOPE Y-U-24HNB	959'	FSL	2478'	FEL	N 40.381423°	W 104.270586°	1.2	4531.9'	SWSE
8	EXISTING STATE ANTELOPE 34-24	959'	FSL	2478'	FEL	N 40.381816°	W 104.269953°	1.2	4531.7'	SWSE

**BONANZA CREEK ENERGY
OPERATING COMPANY, LLC**

STATE ANTELOPE 34-24 PAD
SW 1/4 SE 1/4, SECTION 24, T5N, R62W, 6th P.M.
WELD COUNTY, COLORADO

SURVEYED BY	JAMES FRESHWATER, N.W.	09-06-18	SCALE
DRAWN BY	K.M.R.	10-29-18	1" = 50'
MULTI-WELL PLAN			



UELS, LLC
Corporate Office * 85 South 200 East
Vernal, UT 84078 * (435) 789-1017