

HALLIBURTON

iCem[®] Service

TERRA ENERGY PARTNERS

For: TEP

Date: Friday, December 07, 2018

GM 13-8 Surface PJR

API# 05-045-24018-00

Sincerely,

Grand Junction Cement Engineering

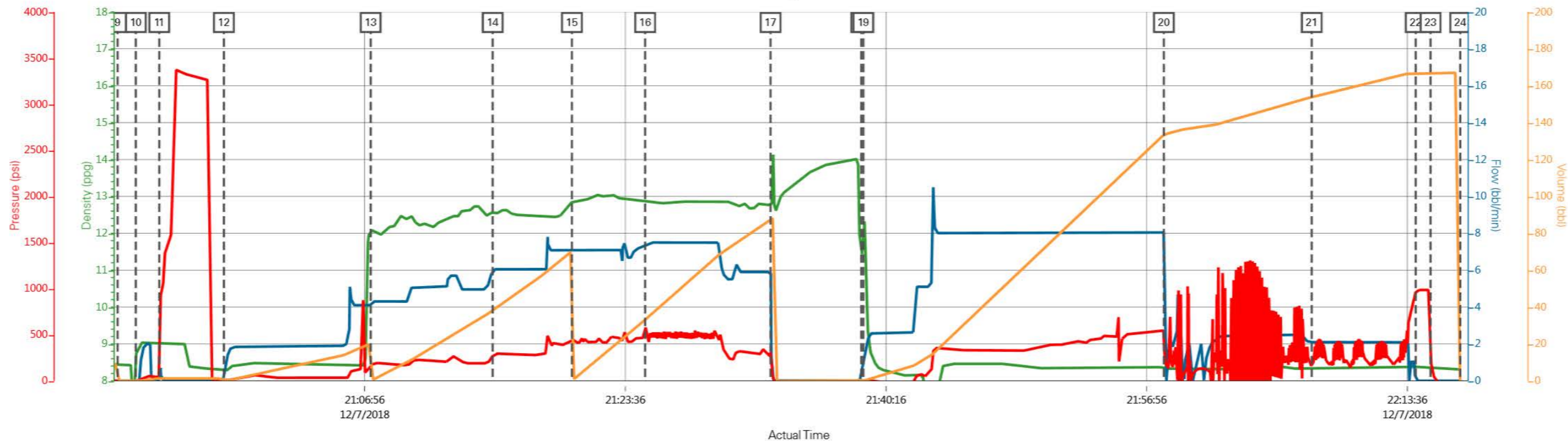
2.0 Real-Time Job Summary

2.1 Job Event Log

Type	Seq. No.	Graph Label	Date	Time	Source	DH Density (ppg)	Comb Pump Rate (bbl/min)	PS Pump Press (psi)	Pump Stg Tot (bbl)	Comments
Event	1	Call Out	12/7/2018	13:00:00	USER					REQUESTED ON LOCATION @ 19:00
Event	2	Pre-Convoy Safety Meeting	12/7/2018	15:00:00	USER					ALL HES PRESENT
Event	3	Crew Leave Yard	12/7/2018	15:10:00	USER					1 RED TIGER PUMP TRUCK , 1 FREHAUF BULK TRUCK, 1 550 SERVICE PICKUP
Event	4	Arrive At Loc	12/7/2018	17:00:00	USER					RIG RUNNING CASING WHEN HES ARRIVED AT LOCATION
Event	5	Assessment Of Location Safety Meeting	12/7/2018	17:45:00	USER					MET WITH COMP REP, AND WENT OVER NUMBERS AND JOB PROCEDURE. WALKED AROUND LOCATION AND COLLECTED WATER SAMPLE (PH- 7.0, CHLORIDES- 500, TEMP- 70F). COMP REP WAS OFFERED SDS FOR ALL CHEMICLES USED BY HES.
Event	6	Pre-Rig Up Safety Meeting	12/7/2018	18:00:00	USER					ALL HES PRESENT
Event	7	Rig-Up Equipment	12/7/2018	18:20:00	USER					HES RIGGED UP 1 RED TIGER PUMP TRUCK, 1 CEMENT SILOS, 2" DISCHARGE IRON, AND 4" SUCTION HOSE WITHOUT ENTERING RED ZONE.
Event	8	Pre-Job Safety Meeting	12/7/2018	20:40:00	USER					ALL HES EMPLOYEES AND RIG CREW PRESENT, RIG CIRCULATED @ 10 BPM PRIOR TO JOB PRESSURE @ 380 PSI.
Event	9	Start Job	12/7/2018	20:51:08	COM6					TD 1038', TP 1042.4' OF 13 3/8" 54.5# SURFACE CSG, FC @ 1009.7', OH 17", MUD 9.2 PPG
Event	10	Prime Lines	12/7/2018	20:52:18	COM6	8.33	2	64	2	FRESH WATER
Event	11	Test Lines	12/7/2018	20:53:48	COM6			3040		ALL LINES HELD PRESSURE AT 3040 PSI

Event	12	Pump H2O Spacer	12/7/2018	20:57:56	COM6	8.33	4	20	300	20BBLs FRESH WATER
Event	13	Pump Lead Cement	12/7/2018	21:07:19	COM6	12.3	7	460	74.2	175 SKS VARICEM CMT 12.3 PPG, 2.38 FT3/SK, 13.77 GAL/SK
Event	14	Check Weight	12/7/2018	21:15:07	USER					WEIGHT VERIFIED VIA PRESSUREIZED MUD SCALES
Event	15	Pump Tail Cement	12/7/2018	21:20:11	COM6	12.8	7.5	500	80.8	215 SKS VARICEM CMT 12.8 PPG, 2.11 FT3/SK, 11.78 GAL/SK
Event	16	Check Weight	12/7/2018	21:24:52	COM6					WEIGHT VERIFIED VIA PRESSUREIZED MUD SCALES
Event	17	Shutdown	12/7/2018	21:32:53	USER					END OF CEMENT, WASH UP ON TOP OF PLUG
Event	18	Pump Displacement	12/7/2018	21:38:41	COM6	8.33	8	600	156.1	FRESH WATER
Event	19	Drop Top Plug	12/7/2018	21:38:49	USER					VERIFIED BY FLAG INDICATOR
Event	20	Slow Rate	12/7/2018	21:58:02	USER					SLOWED RATE DUE TO PUMP CAVITATION
Event	21	Slow Rate	12/7/2018	22:07:29	USER	8.33	2	205	146.1	SLOW RATE TO 2 BPM TO BUMP PLUG
Event	22	Bump Plug	12/7/2018	22:14:08	COM6	8.33	2	400	156.1	LAND PLUG AT 400 PSI, BROUGHT UP TO 1000 PSI
Event	23	Check Floats	12/7/2018	22:15:05	USER					FLOATS HELD, 1 BBL BACK TO TRUCK
Event	24	End Job	12/7/2018	22:16:59	COM6					RETURNS THROUGHOUT JOB, 26 BBLs CMT TO SURFACE, NO SUGAR USED. USED THIRD PARTY TOP PLUG.
Event	25	Post-Job Safety Meeting (Pre Rig-Down)	12/7/2018	22:20:00	USER					ALL HES PRESENT
Event	26	Rig Down Lines	12/7/2018	22:30:00	USER					ALL HES PRESENT
Event	27	Pre-Convoy Safety Meeting	12/7/2018	23:30:00	USER					ALL HES PRESENT
Event	28	Crew Leave Location	12/7/2018	23:45:00	USER					THANK YOU FOR CHOOSING HALLIBURTON CEMENT, SHAWN BLOSSOM AND CREW

TERRA GM 13-8, 13 3/8" SURFACE



DH Density (ppg) 8.31 Comb Pump Rate (bbl/min) 0 PS Pump Press (psi) -56.7 Pump Stg Tot (bbl) 0