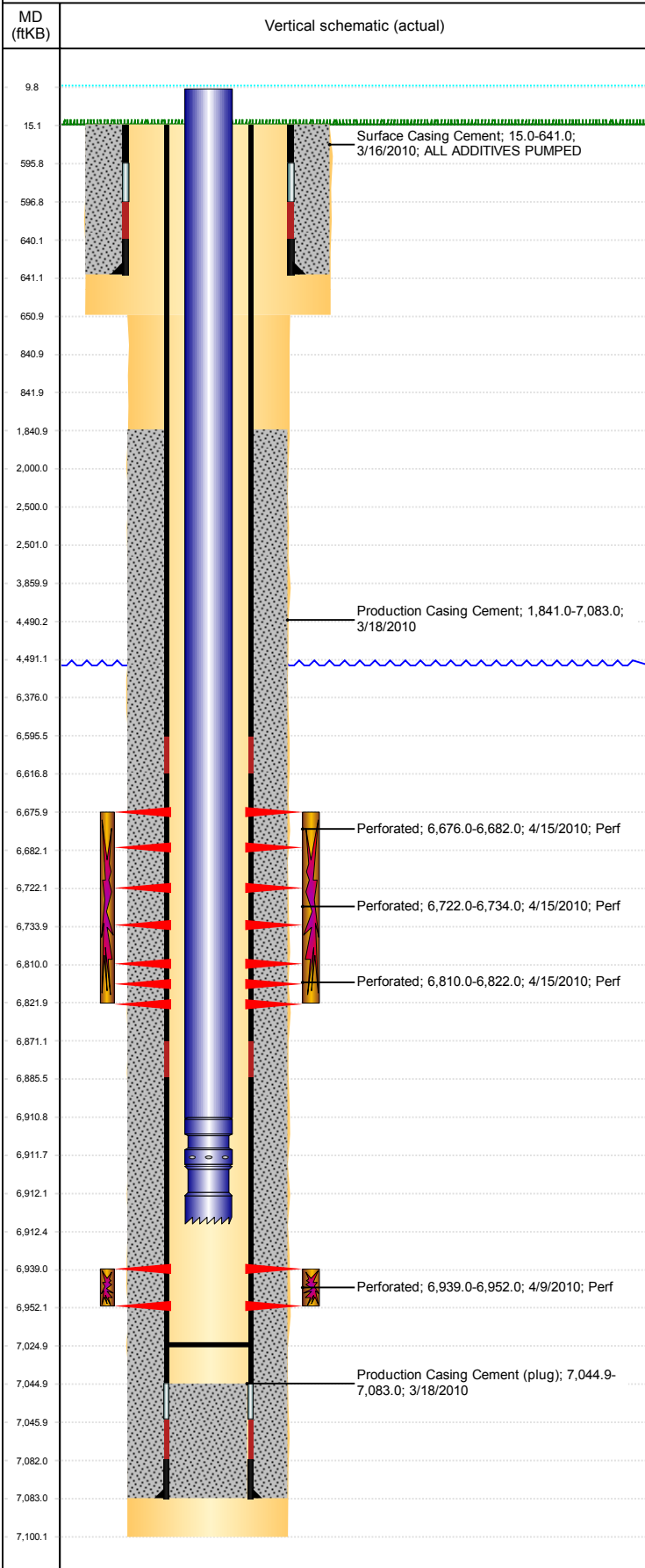


Well Name: GUTTERSEN STATE D15-27

VERTICAL, ORIGINAL HOLE, 3/26/2019 2:05:22 PM



Well Header

API 05-123-30259	Business Unit DJ BASIN	District 15	Well Config VERTICAL
KB - GL / MSL (ft...) 15.00	Spud Date 3/15/2010	P & A Date	Well Production Status SI
SoRT No			

Comment
318Ae LOCATION

Surface Location (Congressional)

Qtr 3 SW	Qtr 4 SE	Section 10	Twshp 3	Twsh... N	Range 64	Rng E... W	Actual Latitude (°) 40.23321149	Actual Longitude (°) -104.53271284
-------------	-------------	---------------	------------	--------------	-------------	---------------	------------------------------------	---------------------------------------

Wellbore Sections

Section Des	Size (in)	Act Top, MD (ftKB)	Act Btm, MD (ftKB)
SURFACE	12 1/4	15	651
PRODUCTION	7 7/8	651	7,100

Casing Strings

Csg Des	Run Date	OD (in)	Wt/Len (lb/ft)	Grade	Top, MD (ftKB)	MD (ftKB)
Surface	3/15/2010	8 5/8	32.00	J-55	15.0	641.0
Production	3/18/2010	4 1/2	11.60	M-80	15.0	7,083.0

Cement

Des	Start Date	Top (ftKB)	Btm (ftKB)
Surface Casing Cement	3/16/2010	15.0	641.0
Production Casing Cement	3/18/2010	1,841.0	7,083.0

Zone Statuses

Zone Name	Status Date	Status	Fluid Type	Job	Prod Method
NIOBRARA	4/19/2010	PR		DRILLING/COMPLETION - ORIGINAL, 3/13/2010...	
NIOBRARA	4/29/2010	PR	Water		Flowing
CODELL	4/29/2010	PR	Water		Flowing
CODELL	2/9/2017	SI			

Perforation Data

Linked Zone	Bnch/Stg	Entered Shot Total	Top (ftKB)	Btm (ftKB)	Date
NIOBRARA, ORIGINAL HOLE	A	12	6,676.00	6,682.00	4/15/2010
NIOBRARA, ORIGINAL HOLE	B	24	6,722.00	6,734.00	4/15/2010
NIOBRARA, ORIGINAL HOLE	C	24	6,810.00	6,822.00	4/15/2010
CODELL, ORIGINAL HOLE		52	6,939.00	6,952.00	4/9/2010

Stimulation Intervals

Zone	Start Date	Top (ftKB)	Btm (ftKB)
NIOBRARA, ORIGINAL HOLE	4/15/2010	6,676.0	6,822.0
CODELL, ORIGINAL HOLE	4/15/2010	6,939.0	6,952.0

Other In Hole

Run Date	Des	OD (in)	Top (ftKB)	Btm (ftKB)

Logs

Date	Type	Top, MD (ftKB)	Btm, MD (ftKB)
3/18/2010	SPECTRAL DENSITY/Pe/DSN NEUTRON/SP/ARRAY COMPENSATED TRUE RESISTIVITY/6 ARM CALIPER	642.0	7,097.0
3/18/2010	SPECTRAL GAMMA RAY	642.0	7,097.0
6/19/2013	GYRO	15.0	6,900.0

Plug Back Total Depths

Date	Type	Com	Depth (ftKB)
3/18/2010	FLOAT COLLAR	FLOAT COLLAR	7,044.9
3/29/2010	DEPTH-LOGGER/CBL	DEPTH-LOGGER/CBL	7,025.0