



March 25, 2019

Mr. Chris Canfield
Colorado Oil & Gas Conservation Commission
1120 Lincoln Street Suite 801
Denver, Colorado 80203

Re: Closure Report – March 2019
Custy #1
SW ¼ SW ¼ Sec.15 T2S R66W 6PM
Lat./Long.: 39.87267/-104.76956
Adams County, Colorado
Remediation Project #9711

Dear Mr. Canfield:

On behalf of Carrizo Niobrara LLC (Carrizo), Eagle Environmental Consulting, Inc. (EAGLE) is submitting this closure report for the above referenced site.

ASSESSMENT ACTIVITIES

Excavation Activities

Following the discovery of a dump line release, source removal excavation activities were completed at the Custy #1 site from June 17-22, 2016. On June 17, 2016, Carrizo submitted a Spill/Release Report – Form 19 (Doc # 401064710) to the Colorado Oil & Gas Conservation Commission (COGCC). In addition, Adams County and Commerce City was verbally notified of the spill/release.

LT Environmental, Inc. (LTE) completed excavation oversight from June 17, 2016 through June 21, 2016. EAGLE provided environmental oversight at the site starting June 22, 2016 per Carrizo's request. Puzzle Creek completed excavation activities onsite. The excavation extents were approximately 38 feet east to west, by approximately 35 feet north to south, with a total depth of approximately 17 feet below ground surface (bgs).

Four sidewall soil samples (SS S, SS W, SS E, and SS N) were collected at approximately 8 feet bgs from the excavation on June 20, 2016 and were submitted to Summit Scientific Laboratory (Summit) for analysis. Following additional excavation activities, four more sidewall soil samples (Sidewall South, Sidewall West, Sidewall North, and Sidewall East) were collected at depths ranging from 10.5 to 12 feet bgs from the excavation on June 22, 2016 and were submitted to Origins Laboratory (Origins) for analysis. All eight sidewall soil samples were submitted for analysis of benzene, toluene, ethylbenzene, total xylenes (BTEX), total petroleum hydrocarbons - gasoline range organics (TPH-GRO), and TPH - diesel range organics (TPH-DRO). Prior to back-filling activities, a gypsum/granular activated carbon groundwater amendment was applied to the excavation to aid in the remediation of residual adsorbed and dissolved phase impacts. A site location map is presented as Figure 1 and a site map illustrating the excavation extents is presented as Figure 2.

Based on laboratory analytical results, soil samples SS W@8' (0.17 milligrams per kilogram (mg/kg)), Sidewall South@11' (0.652 mg/kg), Sidewall West@12' (19.1 mg/kg), Sidewall North@10.5' (20.0

mg/kg), and Sidewall East@11.5' (5.72 mg/kg) contained adsorbed phase benzene concentrations exceeding the COGCC Table 910-1 regulatory limit of 0.17 mg/kg. In addition, soil samples Sidewall West@12' (2,235 mg/kg), Sidewall North@10.5' (2,495 mg/kg), and Sidewall East@11.5' (966 mg/kg) contained TPH concentrations exceeding the COGCC Table 910-1 regulatory limit of 500 mg/kg. Soil analytical results are illustrated in Figure 3 and presented in Table 1.

Since groundwater was encountered during excavation activities, excavation floor soil samples were not collected. A grab groundwater sample (GW-01) was collected from the excavation on June 20, 2016 and submitted to Summit for BTEX analysis. Throughout excavation activities, Select Energy provided vacuum truck services to remove groundwater that accumulated within the excavation.

Based on laboratory analytical results, grab groundwater sample GW-01 contained dissolved benzene (3,800 micrograms per liter (ug/L)), toluene (5,400 ug/L), and total xylenes (5,000 ug/L) concentrations exceeding the COGCC Table 910-1 regulatory limits of 5 ug/L, 560 ug/L, and 1,400 ug/L, respectively. Groundwater analytical results are presented in Table 2.

On June 24, 2016, Carrizo submitted a Remediation Workplan –Form 27 to the COGCC. The Remediation Workplan – Form 27 was approved by the COGCC on June 24, 2016, closing out the initial Spill/Release Report – Form 19 (Doc #401064710) and proceeding under approved remediation project #9711.

Soil Boring Assessment and Monitoring Well Installation Activities

Following back-filling activities, twelve soil borings (MW-01 through MW-12) were advanced onsite on June 27, 2016 to define adsorbed and dissolved phase petroleum hydrocarbon impacts beneath the site. Soil borings MW-01 through MW-12 were advanced to total depths ranging from 16.5 (MW-05) to 20 (MW-01) feet bgs to vertically and laterally define adsorbed phase impacts beneath the site. One soil sample was collected from each boring and submitted to Origins for BTEX and TPH analysis. Each soil boring was then completed as a 1-inch polyvinyl chloride (PVC) monitoring well.

Based on laboratory analytical results, soil samples MW-06@5-7.5' (0.978 mg/kg) and MW-07@5-7.5' (1.83 mg/kg) contained adsorbed benzene concentrations exceeding the COGCC Table 910-1 regulatory limit of 0.17 mg/kg. In addition, soil sample MW-04@12.5-15' (604 mg/kg) contained a TPH concentration exceeding the COGCC Table 910-1 regulatory limit of 500 mg/kg. Soil analytical results are presented in Figure 3 and presented in Table 1.

Additional Assessment Activities

Per EAGLE's conservation with Chris Canfield on July 14, 2016, the COGCC required two additional groundwater monitoring wells (one approximately 30 feet to the west of MW-07 and one approximately 30 feet to the east of MW-06) to define adsorbed and dissolved phase impacts beneath the site.

Additional monitoring wells MW-13 and MW-14 were installed at the Custy #1 site on July 26, 2016. The soil samples collected from MW-13 and MW-14 were submitted to Origins for analysis. Based on laboratory analytical results, soil samples MW-13@10-12.5 and MW-14@5-7.5 did not contain concentrations of BTEX or TPH exceeding the COGCC Table 910-1 regulatory limits. Soil analytical results are presented in Figure 3 and presented in Table 1.

On August 4, 2016, EAGLE developed and sampled monitoring wells MW-13 and MW-14. The groundwater samples collected from MW-13 and MW-14 were submitted to Origins for analysis. Based on the laboratory analytical results, the groundwater samples collected from MW-13 and MW-14 did not

contain concentrations of BTEX exceeding the COGCC Table 910-1 regulatory limits. Groundwater analytical results are presented in Table 2.

Soil Boring Activities

On June 26, 2017 and July 6, 2017, EAGLE completed soil boring activities via hang auger to further assess adsorbed impacts beneath the site. Ten soil borings (SB-01 through SB-10) were advanced to approximately 8 feet bgs. A soil sample from each soil boring was submitted to Origins for analysis of BTEX, TPH-GRO, and TPH-DRO. Based on laboratory analytical results, soil borings SB-04 and SB-05 contained concentrations of benzene exceeding the COGCC Table 910-1 regulatory limit.

Soil sample SB-04 also contained a TPH concentration exceeding the COGCC Table 910-1 regulatory limit. Soil analytical results are presented in Figure 3 and presented in Table 1.

Additional Excavation Activities

A Supplemental Site Investigation and Remediation Workplan – Form 27 (Doc # 401349754) was submitted for remediation project number #9711 on July 31, 2017. The Supplemental Remediation Workplan – Form 27 recommended excavation of impacted soil in the general area of MW-06 and MW-07 for offsite disposal and quarterly groundwater sampling of monitoring wells MW-01 through MW-05, MW-06R, MW-07R, MW-08, MW-09, MW-13, and MW-14.

Excavation activities were completed from August 15, 2017 through August 18, 2017. EAGLE provided environmental oversight and E3 Solutions LLC completed excavation activities onsite. During excavation activities Carrizo and EAGLE were informed by the land owner, Kenneth Custy, that a former pit was located within the excavation area (south of storage tanks). The COGCC Colorado Oil and Gas Information System (COGIS) indicates that a non-permitted pit existed at the site. Lease inspection forms completed on March 29, 1985, November 30, 1988, March 27, 1991, and June 12, 1997 (Doc # 664924, 664923, 348387, and 348384 respectively) confirm the pit existed from 1985 through 1997. The COGIS does not indicate that the pit was ever properly closed.

The following is a list of operators and when they obtained the Custy #1 (Location ID 320170):

- Energy Oil, Inc (June 20, 1983)
- Ouinoco Petroleum, Inc (September 4, 1984)
- Snyder Oil Company (April 1, 1988)
- Thorofare Resources, Inc (September 17, 1993)
- McCartney Engineering, LLC (June 11, 2001)
- Hilcorp Energy Company (September 12, 2011)
- Carrizo Niobrara LLC (July 29, 2013)

During excavation activities, Carrizo encountered the former pit and associated contamination. Carrizo excavated all soil impacts associated when the former pit which was disposed offsite.

Two excavations were completed, one in the general area of MW-06 and the other in the general area around MW-07. The excavation extents of the excavation completed around MW-06 were approximately 11 feet east to west, by approximately 8 feet north to south, with a total depth of approximately 15 feet bgs. The extents of the excavation completed around MW-07 were approximately 70 feet east to west, by approximately 38 feet north to south, with a total depth of approximately 17 feet bgs.

Four sidewall soil samples (South Wall, East Wall, West Wall, North Wall) were collected at approximately 9.5 feet bgs and a floor sample (Floor) at approximately 17 feet bgs from the larger excavation on August 16, 2017. The sidewall and floor samples were submitted to Origins for analysis of BTEX, TPH-GRO, and TPH-DRO. No soil samples were collected from the smaller excavation. Prior to back-filling activities, a gypsum/granular activated carbon groundwater amendment was applied to both of the excavations to aid in the remediation of residual adsorbed and dissolved phase impacts. The excavation extents are presented in Figure 2.

Replacement monitoring wells MW-06R and MW-07R were installed on August 18, 2017 following back-filling activities.

Based on laboratory analytical results, none of the sidewall/floor samples contained concentrations of BTEX or TPH exceeding their applicable COGCC Table 910-1 regulatory limits. Soil analytical results are presented in Figure 3 and presented in Table 1.

A total of 1,338 cubic yards on petroleum impacted soil were removed from the site and disposed of at the Tower Landfill.

A Supplemental Site Investigation and Remediation Workplan – Form 27 (Doc # 401559817) was submitted for remediation project number #9711 on March 23, 2018. The Supplemental Remediation Workplan – Form 27 recommended excavation of impacted soil in the general area of MW-01 and MW-13 for offsite disposal combined with application of groundwater amendment and quarterly groundwater sampling of monitoring wells MW-01 through MW-05, MW-06R, MW-07R, MW-08, MW-09, MW-13, and MW-14.

The limited excavations around MW-01 and MW-13 were completed on April 10, 2018. During excavation activities, monitoring wells MW-01 and MW-13 were accidentally destroyed. Following excavation and application of groundwater amendment, replacement monitoring wells MW-01R and MW-13R were installed. No soil samples were collected during the excavation activities. Excavation extents are presented in Figure 2.

On November 13, 2018, Carrizo submitted a Site Investigation and Remediation Workplan (Supplemental) Form 27 to the COGCC. The Remediation Workplan – Supplemental Form 27 proposing additional closure groundwater monitoring through the first quarter 2019 was approved on November 23, 2018.

GROUNDWATER MONITORING ACTIVITIES

Quarterly groundwater monitoring events were completed on December 3, 2018, March 1, 2019, and March 8, 2019. During the December 3, 2018 monitoring event groundwater samples were collected from monitoring wells MW-01R, MW-02 through MW-05, MW-07R, MW-08, MW-09, MW-13R, and MW-14. Monitoring well MW-06R was observed dry on December 3, 2018, December 17, 2018, December 27, 2018, and January 7, 2019. During the March 1, 2019 monitoring event groundwater samples were collected from MW-01R, MW-02 through MW-05, MW-07R, MW-08, MW-09, MW-13R, and MW-14. Monitoring well MW-06R was observed dry on March 1, 2019. Monitoring well MW-06R was sampled on March 8, 2019.

Prior to groundwater sample collection, static depth to groundwater measurements were collected from each monitoring well in order to generate an accurate groundwater flow direction. Monitoring well locations are presented in Figure 2.

Based on laboratory analytical results, none of the groundwater samples collected during the December 2018 and March 2019 monitoring events contained concentrations of BTEX exceeding their applicable COGCC Table 910-1 regulatory limits. Groundwater analytical results are presented in Figures 4 and 4a and in Table 2. The laboratory analytical reports are also included in Attachment A.

During the December 2018 and March 2019 monitoring events the groundwater flow direction beneath the site is generally to the west/northwest. Groundwater elevations and parameters are presented in Table 3. Groundwater contours for the December 2018 and March 2019 monitoring events are presented in Figures 5 and 5a, respectively. Hydrographs illustrating benzene concentrations versus groundwater elevation for MW-01R, MW-06R, MW-07R, and MW-13R are presented in Attachment B.

RECOMMENDATIONS

Based on groundwater analytical results from the December 2018 and March 2019 monitoring events, EAGLE recommends closing remediation project #9711, discontinuing of quarterly groundwater sampling at the site, and abandonment of all monitoring wells per Division of Water Resources guidelines.

If you have any questions or require further information, please contact me at (303) 443-0479.

Sincerely,

EAGLE ENVIRONMENTAL CONSULTING, INC.

A handwritten signature in blue ink, appearing to read 'D. Coloccia', is positioned above the printed name.

Daniel Coloccia
Project Scientist

FIGURES

Figure 1: Site Location Map

Figure 2: Site Map

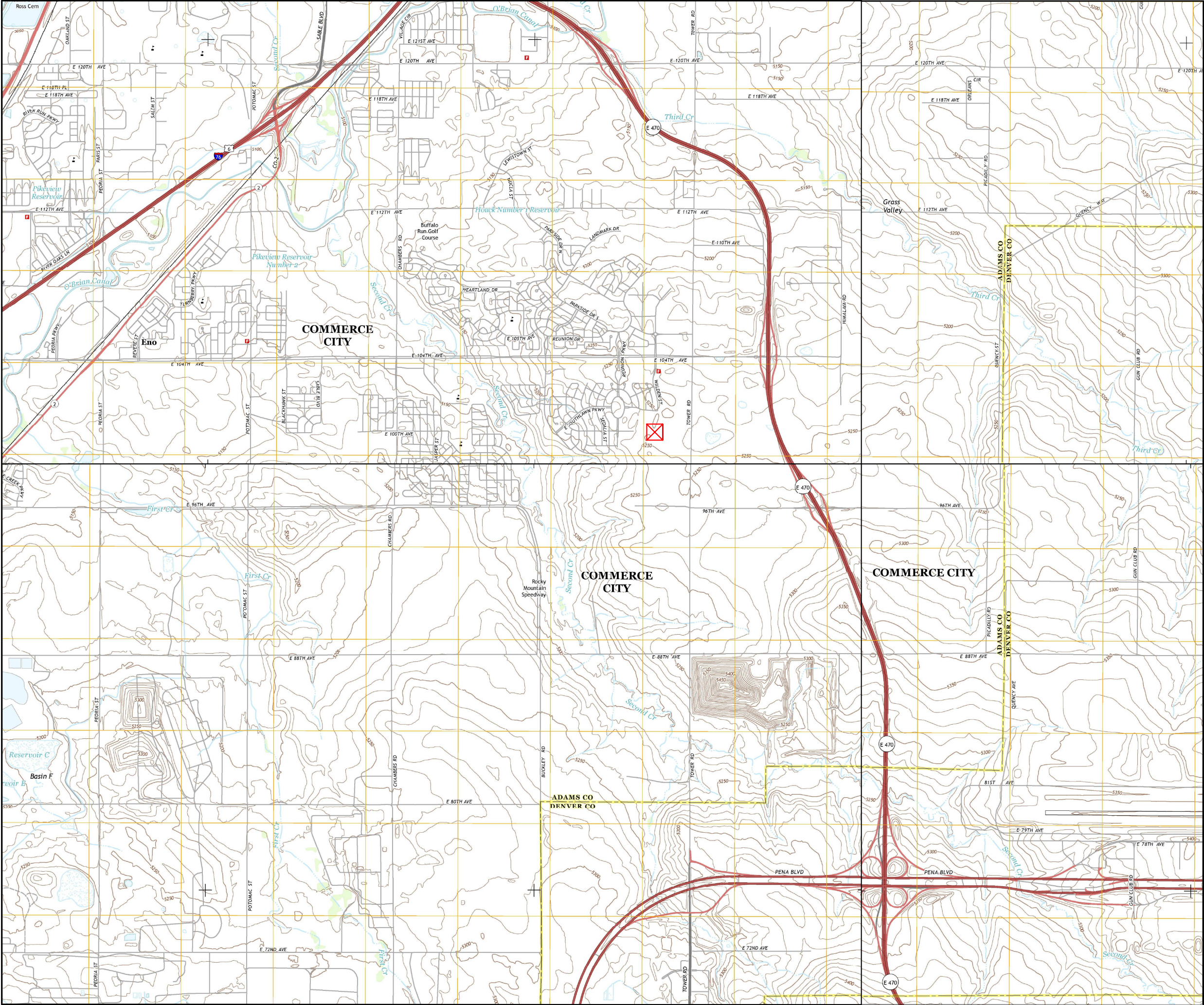
Figure 3: Soil Sample Location Map

Figure 4: Groundwater Sample Location Map (12/3/18)


Figure 4a: Groundwater Sample Location Map (3/1/19 & 3/8/18)

Figure 5: Groundwater Elevation Map (12/3/18)

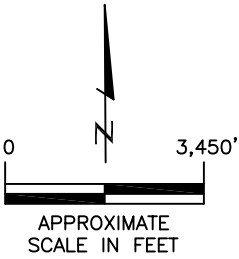
Figure 5a: Groundwater Elevation Map (3/1/19 & 3/8/19)



LEGEND

 APPROXIMATE SITE LOCATION

NOTE: TOPOGRAPHIC MAP OBTAINED FROM U.S. DEPARTMENT OF THE INTERIOR – U.S. GEOLOGICAL SURVEY – BRIGHTON QUADRANGLE, MONTBELLO QUADRANGLE, MILE HIGH LAKES QUADRANGLE, AND DENVER INTERNATIONAL AIRPORT QUADRANGLE – ADAMS CO. AND DENVER CO., 7.5 MINUTE–SERIES



SITE LOCATION MAP
CUSTY #1
SW 1/4 SW 1/4 SEC.15 T2S R66W 6PM
LAT./LONG.: 39.87267 / -104.76956
ADAMS COUNTY, COLORADO
REMEDATION PROJECT #9711

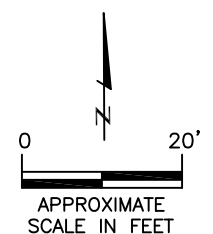
DATE:
07/01/2016

FIG.NO. 1
DRAWN BY: DC



LEGEND

- APPROXIMATE MONITORING WELL LOCATION
- DESTROYED MONITORING WELL LOCATION
- APPROXIMATE EXCAVATION LIMITS (JUNE 2016)
- APPROXIMATE EXCAVATION LIMITS (AUGUST 2017)
- APPROXIMATE WELL PAD BOUNDARY
- APPROXIMATE EXCAVATION AREAS FOR GROUNDWATER AMENDMENT APPLICATION



SITE MAP
CUSTY #1
SW 1/4 SW 1/4 SEC.15 T2S R66W 6PM
LAT/LONG: 39.87267/-104.76956
ADAMS COUNTY, COLORADO
REMEDATION PROJECT #9711

DATE:	11/5/18
FIG NO.:	2
DRAWN BY:	DC



EAGLE
ENVIRONMENTAL
CONSULTING, INC.
4101 INCA STREET, DENVER, CO 80211
Ph: 303-433-0479 • F: 303-325-5449



LEGEND

APPROXIMATE MONITORING WELL LOCATION

DESTROYED MONITORING WELL LOCATION

APPROXIMATE EXCAVATION LIMITS (JUNE 2016)

APPROXIMATE EXCAVATION LIMITS (AUGUST 2017)

APPROXIMATE SOIL SAMPLE LOCATION

APPROXIMATE FLOW LINE LOCATIONS

APPROXIMATE WELL PAD BOUNDARY

PARAMETERS

SAMPLE LOCATION

DATE SAMPLE

DEPTH (FEET)

B = BENZENE (mg/kg)

T = TOLUENE (mg/kg)

E = ETHYLBENZENE (mg/kg)

X = TOTAL XYLENES (mg/kg)

G = TPH - GRO (mg/kg)

D = TPH - DRO (mg/kg)

mg/kg = MILLIGRAMS PER KILOGRAM

TPH - GRO = TOTAL PETROLEUM HYDROCARBONS - GASOLINE RANGE ORGANICS

TPH - DRO = TOTAL PETROLEUM HYDROCARBONS - DIESEL RANGE ORGANICS

NOTE: VALUES PRESENTED IN **BOLD** TYPEFACE INDICATE CONCENTRATIONS EXCEED THE COGCC TABLE 910-1 REGULATORY LIMIT FOR THAT COMPOUND.

COGCC = COLORADO OIL AND GAS CONSERVATION COMMISSION

VALUES PRESENTED WITH A LESS THAN (<) SYMBOL INDICATE CONCENTRATIONS WERE NOT OBSERVED AT THE LABORATORIES REPORTING LIMIT

0

20'

APPROXIMATE SCALE IN FEET

SOIL SAMPLE LOCATION MAP

CUSTY #1

SW 1/4 SW 1/4 SEC.15 T2S R66W 6PM

LAT/LONG: 39.87267/-104.76956

ADAMS COUNTY, COLORADO

REMEDATION PROJECT #9711

DATE: 11/7/17

FIG NO.: 3

DRAWN BY: DC

EAGLE ENVIRONMENTAL CONSULTING, INC.

4101 INCA STREET, DENVER, CO 80211

Ph: 303-433-0479 • F: 303-325-5449

SB-08
6/26/17
7.5-8'
B = <0.050
T = <0.050
E = <0.050
X = <0.050
G = 8.98
D = <50.0

MW-07
6/27/2016
5-7.5'
B = **1.83**
T = 0.074
E = 0.770
X = 13.0
G = 250
D = <50.0

MW-08
6/27/2016
5-7.5'
B = <0.002
T = <0.002
E = <0.002
X = <0.002
G = <0.200
D = <50.0

SB-09
7/6/17
7.5-8'
B = 0.060
T = <0.050
E = 0.135
X = 0.325
G = 27.0
D = <50.0

SB-04
6/26/17
7.5-8'
B = **2.10**
T = 0.063
E = 8.06
X = <0.050
G = **1,200**
D = **3,120**

MW-09
6/27/2016
5-7.5'
B = <0.002
T = <0.002
E = <0.002
X = <0.002
G = <0.200
D = <50.0

SB-07
7/6/17
7.5-8'
B = <0.050
T = <0.050
E = <0.050
X = <0.050
G = <5.00
D = <50.0

MW-06
6/27/2016
7.5-10'
B = **0.978**
T = 6.25
E = 0.751
X = 10.6
G = 138
D = <50.0

MW-10
6/27/2016
5-7.5'
B = <0.002
T = <0.002
E = <0.002
X = <0.002
G = <0.200
D = <50.0

SB-03
6/26/17
7.5-8'
B = <0.002
T = <0.002
E = <0.002
X = <0.002
G = 4.03
D = <50.0

SB-08
7/6/17
7.5-8'
B = <0.050
T = <0.050
E = <0.050
X = <0.050
G = 8.98
D = <50.0

FLOOR
8/16/17
17'
B = <0.002
T = <0.002
E = <0.002
X = <0.002
G = <0.200
D = <50.0

NORTH WALL
8/16/17
9.5'
B = <0.002
T = <0.002
E = 0.003
X = 0.005
G = 0.317
D = <50.0

SB-06
7/6/17
7.5-8'
B = <0.050
T = <0.050
E = 0.507
X = 0.974
G = 24.6
D = <50.0

EAST WALL
8/16/17
9.5'
B = <0.050
T = <0.050
E = <0.050
X = <0.050
G = <5.00
D = 63.5

SB-10
7/6/17
7.5-8'
B = <0.050
T = <0.050
E = <0.050
X = <0.050
G = <5.00
D = <50.0

MW-14
7/26/2016
5-7.5'
B = <0.002
T = <0.002
E = <0.002
X = <0.002
G = <0.002
D = <50.0

SB-05
6/26/17
7.5-8'
B = **0.230**
T = 0.400
E = 0.234
X = 3.70
G = 44.3
D = <50.0

SB-02
6/26/17
7-7.5'
B = <0.002
T = <0.002
E = <0.002
X = <0.002
G = <0.200
D = <50.0

SB-01
6/26/17
7.5-8'
B = <0.002
T = <0.002
E = <0.002
X = <0.002
G = 4.35
D = <50.0

SOUTH WALL
8/16/17
9.5'
B = <0.002
T = <0.002
E = 0.002
X = <0.002
G = 0.546
D = 60.0

Sidewall North
6/22/2016
10.5'
B = **20.0**
T = 75.7
E = 11.9
X = 116
G = **2,140**
D = **355**

SS N
6/20/2016
8'
B = 0.062
T = 0.031
E = <0.0050
X = 0.027
G = <0.50
D = <50

MW-05
6/27/2016
5-7.5'
B = <0.002
T = <0.002
E = <0.002
X = <0.002
G = <0.200
D = <50.0

MW-13
7/26/2016
10-12.5'
B = 0.038
T = <0.002
E = <0.002
X = <0.002
G = <0.200
D = <50.0

WEST WALL
8/16/17
9.5'
B = <0.002
T = <0.002
E = <0.002
X = <0.002
G = <0.200
D = <50.0

Sidewall West
6/22/2016
12'
B = **19.1**
T = 69.6
E = 7.98
X = 104
G = **1,930**
D = **305**

SS E
6/20/2016
8'
B = 0.0060
T = <0.0050
E = <0.0050
X = 0.0056
G = <0.50
D = <50

Sidewall East
6/22/2016
11.5'
B = **5.72**
T = 24.6
E = 3.98
X = 45.5
G = **750**
D = **216**

MW-02
6/27/2016
5-7.5'
B = <0.002
T = <0.002
E = <0.002
X = <0.002
G = <0.200
D = <50.0

MW-01
6/27/2016
10-12.5'
B = 0.060
T = 0.247
E = 0.127
X = 1.02
G = 26.6
D = 110

SS W
6/20/2016
8'
B = **0.17**
T = 0.12
E = 0.021
X = 0.29
G = 5.0
D = <50

Sidewall South
6/22/2016
11'
B = **0.652**
T = 4.89
E = 1.36
X = 12.0
G = 274
D = <50.0

MW-03
6/27/2016
5-7.5'
B = <0.002
T = <0.002
E = <0.002
X = <0.002
G = <0.200
D = <50.0

MW-04
6/27/2016
12.5-15'
B = <0.050
T = <0.050
E = 0.110
X = 0.238
G = **150**
D = **454**

MW-12
6/27/2016
5-7.5'
B = <0.002
T = <0.002
E = <0.002
X = <0.002
G = <0.200
D = <50.0

MW-11
6/27/2016
5-7.5'
B = <0.002
T = <0.002
E = <0.002
X = <0.002
G = <0.200
D = <50.0

LEGEND

- APPROXIMATE MONITORING WELL LOCATION
- DESTROYED MONITORING WELL LOCATION
- APPROXIMATE EXCAVATION LIMITS (JUNE 2016)
- APPROXIMATE EXCAVATION LIMITS (AUGUST 2017)
- APPROXIMATE WELL PAD BOUNDARY
- APPROXIMATE EXCAVATION AREAS FOR GROUNDWATER AMENDMENT APPLICATION

PARAMETERS

SAMPLE LOCATION
B = BENZENE (ug/L)
T = TOLUENE (ug/L)
E = ETHYLBENZENE (ug/L)
X = TOTAL XYLENES (ug/L)

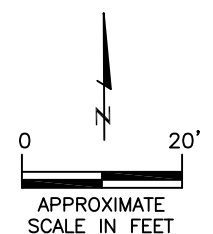
ug/L = MICROGRAMS PER LITER

NOTE: VALUES PRESENTED IN **BOLD** TYPEFACE EXCEED THE COGCC TABLE 910-1 REGULATORY LIMITS FOR THAT COMPOUND.

COGCC = COLORADO OIL AND GAS CONSERVATION COMMISSION

VALUES PRESENTED WITH A LESS THAN SYMBOL (<) INDICATE CONCENTRATIONS WERE NOT OBSERVED AT THE LABORATORY REPORTING LIMIT.

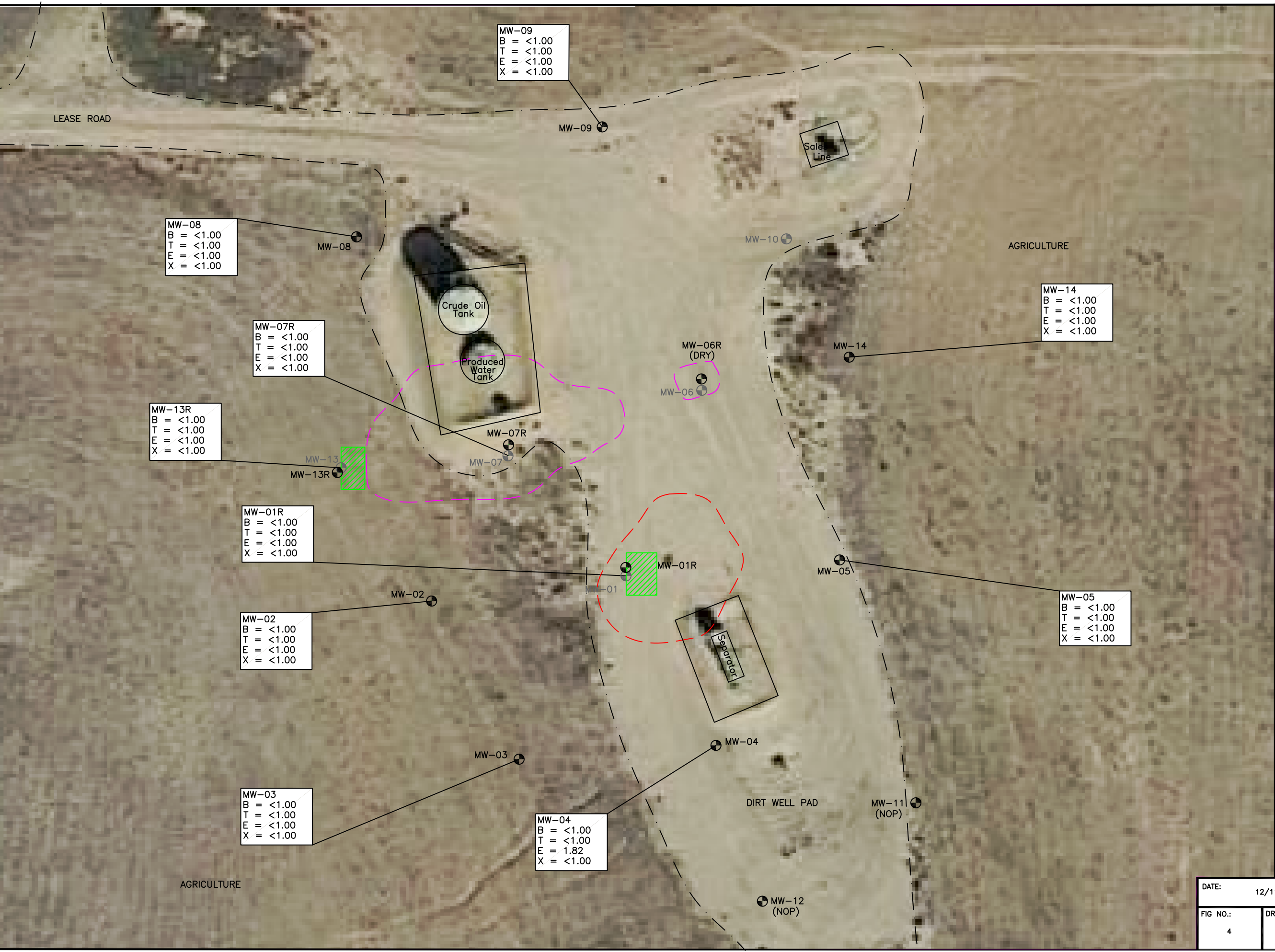
(DRY) = MONITORING WELL DRY
(NOP) = NOT ON MONITORING PLAN



GROUNDWATER SAMPLE LOCATION MAP
(12/3/18)
CUSTY #1
SW 1/4 SW 1/4 SEC.15 T2S R66W 6PM
LAT/LONG: 39.87267/-104.76956
ADAMS COUNTY, COLORADO
REMEDATION PROJECT #9711

DATE:	12/11/18
FIG NO.:	4
DRAWN BY:	DC

EAGLE
ENVIRONMENTAL
CONSULTING, INC.
4101 INCA STREET, DENVER, CO 80211
Ph: 303-433-0479 • F: 303-325-5449



LEGEND

- APPROXIMATE MONITORING WELL LOCATION
- DESTROYED MONITORING WELL LOCATION
- APPROXIMATE EXCAVATION LIMITS (JUNE 2016)
- APPROXIMATE EXCAVATION LIMITS (AUGUST 2017)
- APPROXIMATE WELL PAD BOUNDARY
- APPROXIMATE EXCAVATION AREAS FOR GROUNDWATER AMENDMENT APPLICATION

PARAMETERS

SAMPLE LOCATION
 B = BENZENE (ug/L)
 T = TOLUENE (ug/L)
 E = ETHYLBENZENE (ug/L)
 X = TOTAL XYLENES (ug/L)

ug/L = MICROGRAMS PER LITER

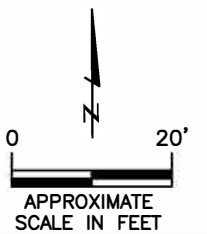
NOTE: VALUES PRESENTED IN **BOLD** TYPEFACE EXCEED THE COGCC TABLE 910-1 REGULATORY LIMITS FOR THAT COMPOUND.

COGCC = COLORADO OIL AND GAS CONSERVATION COMMISSION

VALUES PRESENTED WITH A LESS THAN SYMBOL (<) INDICATE CONCENTRATIONS WERE NOT OBSERVED AT THE LABORATORY REPORTING LIMIT.

(NOP) = NOT ON MONITORING PLAN

NOTE: MONITORING WELL MW-06R WAS OBSERVED DRY 3/1/19. SAMPLED 3/8/19.



GROUNDWATER SAMPLE LOCATION MAP
 CUSTY #1
 SW 1/4 SW 1/4 SEC.15 T2S R66W 6PM
 LAT/LONG: 39.87267/-104.76956
 ADAMS COUNTY, COLORADO
 REMEDIATION PROJECT #9711

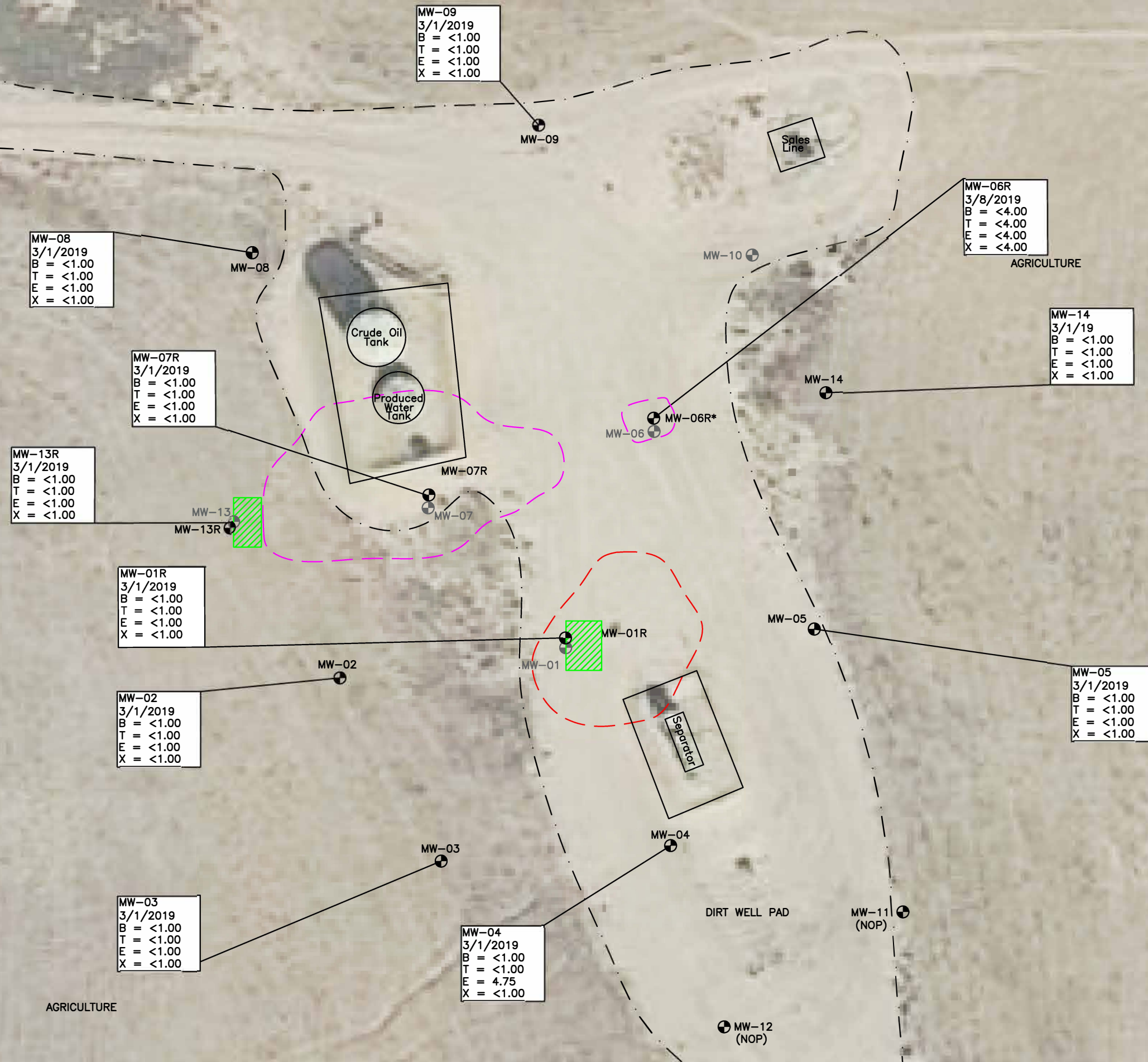
DATE: 3/14/19

FIG NO.: 4A

DRAWN BY: DC

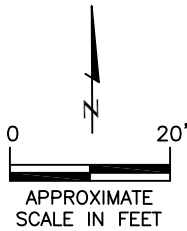


EAGLE
 ENVIRONMENTAL
 CONSULTING, INC.
 4101 INCA STREET, DENVER, CO 80211
 Ph: 303-433-0479 • F: 303-325-5449



LEGEND

- APPROXIMATE MONITORING WELL LOCATION
- DESTROYED MONITORING WELL LOCATION
- APPROXIMATE EXCAVATION LIMITS (JUNE 2016)
- APPROXIMATE EXCAVATION LIMITS (AUGUST 2017)
- APPROXIMATE WELL PAD BOUNDARY
- APPROXIMATE EXCAVATION AREAS FOR GROUNDWATER AMENDMENT APPLICATION
- GROUNDWATER ELEVATION (FEET)
- GROUNDWATER ELEVATION CONTOUR (FEET)
- INFERRED GROUNDWATER FLOW DIRECTION
- (NOP) NOT ON PLAN
- (DRY) MONITORING WELL DRY



GROUNDWATER ELEVATION MAP
(12/3/18)

CUSTY #1
SW 1/4 SW 1/4 SEC.15 T2S R66W 6PM
LAT/LONG: 39.87267/-104.76956
ADAMS COUNTY, COLORADO
REMEDATION PROJECT #9711

DATE: 12/11/18

FIG NO.: 5

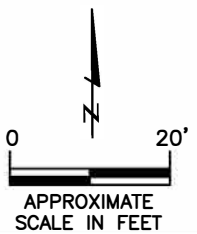
DRAWN BY: DC



LEGEND

- APPROXIMATE MONITORING WELL LOCATION
- DESTROYED MONITORING WELL LOCATION
- APPROXIMATE EXCAVATION LIMITS (JUNE 2016)
- APPROXIMATE EXCAVATION LIMITS (AUGUST 2017)
- APPROXIMATE WELL PAD BOUNDARY
- APPROXIMATE EXCAVATION AREAS FOR GROUNDWATER AMENDMENT APPLICATION
- (90.74) GROUNDWATER ELEVATION (FEET)
- 92 GROUNDWATER ELEVATION CONTOUR (FEET)
- INFERRED GROUNDWATER FLOW DIRECTION
- (NOP) NOT ON PLAN
- (DRY) MONITORING WELL DRY

* ELEVATION DATA COLLECTED ON 3/8/19, NOT UTILIZED IN CONSTRUCTION OF GROUNDWATER CONTOURS.



GROUNDWATER ELEVATION MAP
(3/1/19)
CUSTY #1
SW 1/4 SW 1/4 SEC.15 T2S R66W 6PM
LAT/LONG: 39.87267/-104.76956
ADAMS COUNTY, COLORADO
REMEDATION PROJECT #9711

DATE: 3/14/19

FIG NO.: 5A

DRAWN BY: DC



TABLES

Table 1: Soil Analytical Results Summary

Table 2: Groundwater Analytical Results Summary

Table 3: Groundwater Elevation and Parameter Summary

TABLE 1
SOIL ANALYTICAL RESULTS SUMMARY
CUSTY #1
SW 1/4 SW 1/4 SEC.15 T2S R66W 6PM
LAT/LONG: 39.87267/-104.76956
ADAMS COUNTY, COLORADO
REMEDIATION PROJECT #9711

Sample Location (Latitude, Longitude)	Date Sample Collected	Approximate Depth (feet)	Benzene (mg/kg)	Toluene (mg/kg)	Ethylbenzene (mg/kg)	Total Xylenes (mg/kg)	TPH-GRO (mg/kg)	TPH-DRO (mg/kg)
COGCC Table 910-1 Regulatory Limit (mg/kg)			0.17	85	100	175	500	
SS S	6/20/2016	8.0	0.033	0.066	<0.0050	0.018	<0.50	<50
SS W	6/20/2016	8.0	0.17	0.12	0.021	0.29	5.0	<50
SS E	6/20/2016	8.0	0.0060	<0.0050	<0.0050	0.0056	<0.50	<50
SS N	6/20/2016	8.0	0.062	0.031	<0.0050	0.027	<0.50	<50
Sidewall South (39.872930, -104.769741)	06/22/16	11.0	0.652	4.89	1.36	12.0	274	<50.0
Sidewall West (39.872981, -104.769817)	06/22/16	12.0	19.1	69.6	7.98	104	1,930	305
Sidewall North (39.873025, -104.769734)	06/22/16	10.5	20.0	75.7	11.9	116	2,140	355
Sidewall East (39.872980, -104.769676)	06/22/16	11.5	5.72	24.6	3.98	45.5	750	216
MW-01 (39.87297913, -104.7697838)	06/27/16	10-12.5	0.060	0.247	0.127	1.02	26.6	110
MW-02 (39.87296243, -104.7699640)	06/27/16	5-7.5	<0.002	<0.002	<0.002	<0.002	<0.200	<50.0
MW-03 (39.87284865, -104.7698840)	06/27/16	5-7.5	<0.002	<0.002	<0.0020	<0.002	<0.200	<50.0
MW-04 (39.87285635, -104.7696969)	06/27/16	12.5-15	<0.050	<0.050	0.110	0.238	150	454
MW-05 (39.87298890, -104.7695858)	06/27/16	5-7.5	<0.002	<0.002	<0.002	<0.002	<0.200	<50.0
MW-06 (39.87311149, -104.7697118)	06/27/16	7.5-10	0.978	6.25	0.751	10.6	138	<50.0
MW-07 (39.87306585, -104.7698917)	06/27/16	5-7.5	1.83	0.074	0.770	13.0	250	<50.0
MW-08 (39.87322288, -104.7700310)	06/27/16	5-7.5	<0.002	<0.002	<0.002	<0.002	<0.200	<50.0
MW-09 (39.87330035, -104.7698025)	06/27/16	5-7.5	<0.002	<0.002	<0.002	<0.002	<0.200	<50.0
MW-10 (39.87321894, -104.7696325)	06/27/16	5-7.5	<0.002	<0.002	<0.002	<0.002	<0.200	<50.0
MW-11 (39.87281543, -104.7695166)	06/27/16	5-7.5	<0.002	<0.002	<0.002	<0.002	<0.200	<50.0
MW-12 (39.87274590, -104.7696596)	06/27/16	5-7.5	<0.002	<0.002	<0.002	<0.002	<0.200	<50.0

TABLE 1
SOIL ANALYTICAL RESULTS SUMMARY
CUSTY #1
SW 1/4 SW 1/4 SEC.15 T2S R66W 6PM
LAT/LONG: 39.87267/-104.76956
ADAMS COUNTY, COLORADO
REMEDATION PROJECT #9711

Sample Location (Latitude, Longitude)	Date Sample Collected	Approximate Depth (feet)	Benzene (mg/kg)	Toluene (mg/kg)	Ethylbenzene (mg/kg)	Total Xylenes (mg/kg)	TPH-GRO (mg/kg)	TPH-DRO (mg/kg)
COGCC Table 910-1 Regulatory Limit (mg/kg)			0.17	85	100	175	500	
MW-13 (39.87305505, -104.7700342)	07/26/16	10-12.5	0.038	<0.002	<0.002	<0.002	<0.200	<50.0
MW-14 (39.87313118, -104.7695622)	07/26/16	5-7.5	<0.002	<0.002	<0.002	<0.002	<0.200	<50.0
SB-01 @ 7.5-8' (39.87306423/-104.76970571)	06/26/17	7.5-8	<0.002	<0.002	<0.002	<0.002	4.35	<50.0
SB-02 @ 7-7.5' (39.87304948/-104.77005639)	06/26/17	7-7.5	<0.002	<0.002	<0.002	<0.002	<0.200	<50.0
SB-03 @ 7.5-8' (39.87302256/-104.76985772)	06/26/17	7.5-8	<0.002	<0.002	<0.002	<0.002	4.03	<50.0
SB-04 @ 7.5-8' (39.87309726/-104.76990218)	06/26/17	7.5-8	2.10	0.063	8.06	<0.050	1200	3120
SB-05 @ 7.5-8' (39.87304069/-104.76995287)	06/26/17	7.5-8	0.230	0.400	0.234	3.70	44.3	<50.0
SB-06 @ 7.5-8' (39.87306305/-104.76980094)	07/06/17	7.5-8	<0.050	<0.050	0.507	0.974	24.6	<50.0
SB-07 @ 7.5-8' (39.87312658/-104.76977003)	07/06/17	7.5-8	<0.050	<0.050	<0.050	<0.050	<5.00	<50.0
SB-08 @ 7.5-8' (39.87310327/-104.77000884)	07/06/17	7.5-8	<0.050	<0.050	<0.050	<0.050	8.98	<50.0
SB-09 @ 7.5-8' (39.87318892/-104.76991748)	07/06/17	7.5-8	0.060	<0.050	0.135	0.325	27.0	<50.0
SB-10 @ 7.5-8' (39.87310836/-104.76963083)	07/06/17	7.5-8	<0.050	<0.050	<0.050	<0.050	<5.00	<50.0
South Wall @ 9.5' (39.873031/-104.769882)	08/16/17	9.5	<0.002	<0.002	0.002	<0.002	0.546	60.0
East Wall @ 9.5' (39.873083/-104.769782)	08/16/17	9.5	<0.050	<0.050	<0.050	<0.050	<5.00	63.5
West Wall @ 9.5' (39.873037/-104.770000)	08/16/17	9.5	<0.002	<0.002	<0.002	<0.002	<0.200	<50.0
North Wall @ 9.5' (39.8733129/-104.769908)	08/16/17	9.5	<0.002	<0.002	0.003	0.005	0.317	<50.0
Floor @ 17' (39.873070/-104.769920)	08/16/17	17.0	<0.002	<0.002	<0.002	<0.002	<0.200	<50.0

COGCC = Colorado Oil and Gas Conservation Commission

mg/kg = milligrams per kilogram

TPH-GRO = Total Petroleum Hydrocarbons - Gasoline Range Organics

TPH-DRO = Total Petroleum Hydrocarbons - Diesel Range Organics

< = indicates result is less than the stated laboratory reporting limit

Note: Values presented in **bold** typeface exceed their respective COGCC Table 910-1 Regulatory Limit.

TABLE 2
GROUNDWATER ANALYTICAL RESULTS SUMMARY
CUSTY #1
SW 1/4 SW 1/4 SEC.15 T2S R66W 6PM
LAT/LONG: 39.87267/-104.76956
ADAMS COUNTY, COLORADO
REMEDIATION PROJECT #9711

Sample Location (Latitude, Longitude)	Date	Benzene (µg/L)	Toluene (µg/L)	Ethylbenzene (µg/L)	Total Xylenes (µg/L)
COGCC Table 910-1 Regulatory Limits (µg/L)		5	560	700	1,400
GW-01	06/20/16	3,800	5,400	210	5,000
MW-01 (39.87297913, -104.7697838)	07/01/16	1,800	611	42.0	281
	10/06/16	904	<20.0	47.2	49.4
	01/11/17	99.0	<10.0	13.8	<10.0
	04/14/17	35.0	<1.00	5.92	4.12
	07/03/17	7.38	<1.00	1.04	<1.00
	10/10/17	52.0	<1.00	4.12	<1.00
	01/18/18	45.6	<1.00	8.66	<1.00
	DESTROYED				
MW-01R (39.87297913, -104.7697838)	04/26/18	<1.00	<1.00	<1.00	<1.00
	06/13/18	<1.00	<1.00	<1.00	<1.00
	09/24/18	<4.00	<4.00	<4.00	<4.00
	12/03/18	<1.00	<1.00	<1.00	<1.00
	03/01/19	<1.00	<1.00	<1.00	<1.00
MW-02 (39.87296243, -104.7699640)	07/01/16	<1.00	<1.00	<1.00	<1.00
	10/06/16	<1.00	<1.00	<1.00	<1.00
	01/11/17	<1.00	<1.00	<1.00	<1.00
	04/14/17	<1.00	<1.00	<1.00	<1.00
	07/03/17	<1.00	<1.00	<1.00	<1.00
	10/10/17	<1.00	<1.00	<1.00	<1.00
	01/18/18	<1.00	<1.00	<1.00	<1.00
	04/26/18	<1.00	<1.00	<1.00	<1.00
	06/13/18	<1.00	<1.00	<1.00	<1.00
	09/24/18	<1.00	<1.00	<1.00	<1.00
	12/03/18	<1.00	<1.00	<1.00	<1.00
	03/01/19	<1.00	<1.00	<1.00	<1.00
MW-03 (39.87284865, -104.7698840)	07/01/16	<1.00	<1.00	<1.00	1.53
	10/06/16	<1.00	<1.00	<1.00	<1.00
	01/11/17	<1.00	<1.00	<1.00	<1.00
	04/14/17	<1.00	<1.00	<1.00	<1.00
	07/03/17	<1.00	<1.00	<1.00	<1.00
	10/10/17	<1.00	<1.00	<1.00	<1.00
	01/18/18	<1.00	<1.00	<1.00	<1.00
	04/26/18	<1.00	<1.00	<1.00	<1.00
	06/13/18	<1.00	<1.00	<1.00	<1.00
	09/24/18	<1.00	<1.00	<1.00	<1.00
	12/03/18	<1.00	<1.00	<1.00	<1.00
	03/01/19	<1.00	<1.00	<1.00	<1.00

TABLE 2
GROUNDWATER ANALYTICAL RESULTS SUMMARY
CUSTY #1
SW 1/4 SW 1/4 SEC.15 T2S R66W 6PM
LAT/LONG: 39.87267/-104.76956
ADAMS COUNTY, COLORADO
REMEDATION PROJECT #9711

Sample Location (Latitude, Longitude)	Date	Benzene (µg/L)	Toluene (µg/L)	Ethylbenzene (µg/L)	Total Xylenes (µg/L)
COGCC Table 910-1 Regulatory Limits (µg/L)		5	560	700	1,400
MW-04 (39.87285635, -104.7696969)	07/01/16	<1.00	<1.00	2.65	3.73
	10/06/16	<1.00	<1.00	4.23	5.47
	01/11/17	<1.00	<1.00	35.3	23.7
	04/14/17	<1.00	<1.00	21.3	2.55
	07/03/17	<1.00	<1.00	1.87	<1.00
	10/10/17	<1.00	<1.00	1.68	<1.00
	01/18/18	<1.00	<1.00	1.16	<1.00
	04/26/18	<1.00	<1.00	<1.00	<1.00
	06/13/18	<1.00	<1.00	<1.00	<1.00
	09/24/18	<1.00	<1.00	6.88	<1.00
	12/03/18	<1.00	<1.00	1.82	<1.00
	03/01/19	<1.00	<1.00	4.75	<1.00
MW-05 (39.87298890, -104.7695858)	07/01/16	<1.00	<1.00	<1.00	<1.00
	10/06/16	<1.00	<1.00	<1.00	<1.00
	01/11/17	<1.00	<1.00	<1.00	<1.00
	04/14/17	<1.00	<1.00	<1.00	<1.00
	07/03/17	<1.00	<1.00	<1.00	<1.00
	10/10/17	<1.00	<1.00	<1.00	<1.00
	01/18/18	<1.00	<1.00	<1.00	<1.00
	04/26/18	<1.00	<1.00	<1.00	<1.00
	06/13/18	<1.00	<1.00	<1.00	<1.00
	09/24/18	<1.00	<1.00	<1.00	<1.00
	12/03/18	<1.00	<1.00	<1.00	<1.00
	03/01/19	<1.00	<1.00	<1.00	<1.00
MW-06 (39.87311149, -104.7697118)	07/01/16	146	200	33.5	211
	10/06/16	761	<4.00	13.4	166
	01/11/17	40.5	<4.00	<4.00	<4.00
	04/14/17	76.4	<1.00	<1.00	<1.00
	07/03/17	INA			
	DESTROYED				
MW-06R (39.87311155, -104.7697118)	10/10/17	<1.00	<1.00	<1.00	<1.00
	01/19/18	<1.00	<1.00	<1.00	<1.00
	04/26/18	<4.00	<4.00	<4.00	<4.00
	06/22/18	<1.00	<1.00	<1.00	<1.00
	09/24/18	<4.00	<4.00	<4.00	<4.00
	12/03/18	DRY			
	12/17/18	DRY			
	12/27/18	DRY			
	01/07/19	DRY			
	03/01/19	DRY			
	03/08/19	<4.00	<4.00	<4.00	<4.00

TABLE 2
GROUNDWATER ANALYTICAL RESULTS SUMMARY
CUSTY #1
SW 1/4 SW 1/4 SEC.15 T2S R66W 6PM
LAT/LONG: 39.87267/-104.76956
ADAMS COUNTY, COLORADO
REMEDIATION PROJECT #9711

Sample Location (Latitude, Longitude)	Date	Benzene (µg/L)	Toluene (µg/L)	Ethylbenzene (µg/L)	Total Xylenes (µg/L)
COGCC Table 910-1 Regulatory Limits (µg/L)		5	560	700	1,400
MW-07 (39.87306585, -104.7698917)	07/01/16	445	39.2	32.8	51.1
	10/06/16	3,640	41.5	423	217
	01/11/17	1,420	<20.0	327	<20.0
	04/14/17	533	<10.0	133	<10.0
	DESTROYED				
MW-07R (39.87306585, -104.7698911)	10/10/17	<1.00	<1.00	<1.00	<1.00
	01/18/18	<1.00	<1.00	<1.00	<1.00
	04/26/18	<1.00	<1.00	<1.00	<1.00
	06/13/18	<1.00	<1.00	<1.00	<1.00
	06/22/18	<1.00	<1.00	<1.00	<1.00
	09/24/18	<1.00	<1.00	<1.00	<1.00
	12/03/18	<1.00	<1.00	<1.00	<1.00
	03/01/19	<1.00	<1.00	<1.00	<1.00
MW-08 (39.87322288, -104.7700310)	07/01/16	<1.00	<1.00	<1.00	<1.00
	10/06/16	<1.00	<1.00	<1.00	<1.00
	01/11/17	<1.00	<1.00	<1.00	<1.00
	04/14/17	<1.00	<1.00	<1.00	<1.00
	07/03/17	<1.00	<1.00	<1.00	<1.00
	10/10/17	<1.00	<1.00	<1.00	<1.00
	01/18/18	<1.00	<1.00	<1.00	<1.00
	04/26/18	<1.00	<1.00	<1.00	<1.00
	06/13/18	<1.00	<1.00	<1.00	<1.00
	09/24/18	<1.00	<1.00	<1.00	<1.00
	12/03/18	<1.00	<1.00	<1.00	<1.00
	03/01/19	<1.00	<1.00	<1.00	<1.00
MW-09 (39.87330035, -104.7698025)	07/01/16	<1.00	<1.00	<1.00	<1.00
	10/06/16	<1.00	<1.00	<1.00	<1.00
	01/11/17	<1.00	<1.00	<1.00	<1.00
	04/14/17	<1.00	<1.00	<1.00	<1.00
	07/03/17	<1.00	<1.00	<1.00	<1.00
	10/10/17	<1.00	<1.00	<1.00	<1.00
	01/18/18	<1.00	<1.00	<1.00	<1.00
	04/26/18	<1.00	<1.00	<1.00	<1.00
	06/13/18	<1.00	<1.00	<1.00	<1.00
	09/24/18	<1.00	<1.00	<1.00	<1.00
	12/03/18	<1.00	<1.00	<1.00	<1.00
	03/01/19	<1.00	<1.00	<1.00	<1.00

TABLE 2
GROUNDWATER ANALYTICAL RESULTS SUMMARY
CUSTY #1
SW 1/4 SW 1/4 SEC.15 T2S R66W 6PM
LAT/LONG: 39.87267/-104.76956
ADAMS COUNTY, COLORADO
REMEDIATION PROJECT #9711

Sample Location (Latitude, Longitude)	Date	Benzene (µg/L)	Toluene (µg/L)	Ethylbenzene (µg/L)	Total Xylenes (µg/L)
COGCC Table 910-1 Regulatory Limits (µg/L)		5	560	700	1,400
MW-10 (39.87321894, -104.7696325)	07/01/16	<1.00	<1.00	<1.00	<1.00
	10/06/16	<1.00	<1.00	<1.00	<1.00
	01/11/17	<1.00	<1.00	<1.00	<1.00
	04/14/17	<1.00	<1.00	<1.00	<1.00
	07/03/17	INA			
		DESTROYED			
MW-11 (39.87281543, -104.7695166)	07/01/16	<1.00	<1.00	<1.00	<1.00
	10/06/16	<1.00	<1.00	<1.00	<1.00
	01/11/17	<1.00	<1.00	<1.00	<1.00
	04/14/17	<1.00	<1.00	<1.00	<1.00
	07/03/17	<1.00	<1.00	<1.00	<1.00
	10/10/17	NOP			
	01/18/18	NOP			
	04/26/18	NOP			
	06/13/18	NOP			
	09/24/18	NOP			
	12/03/18	NOP			
	03/01/19	NOP			
MW-12 (39.87274590, -104.7696596)	07/01/16	<1.00	<1.00	<1.00	<1.00
	10/06/16	<1.00	<1.00	<1.00	<1.00
	01/11/17	<1.00	<1.00	<1.00	<1.00
	04/14/17	<1.00	<1.00	<1.00	<1.00
	07/03/17	<1.00	<1.00	<1.00	<1.00
	10/10/17	NOP			
	01/18/18	NOP			
	04/26/18	NOP			
	06/13/18	NOP			
	09/24/18	NOP			
	12/03/18	NOP			
	03/01/19	NOP			
MW-13 (39.87305505, -104.7700342)	08/04/16	<4.00	<4.00	<4.00	<4.00
	10/06/16	32.9	<1.00	<1.00	<1.00
	01/11/17	54.0	<1.00	<1.00	<1.00
	04/14/17	47.0	<1.00	<1.00	<1.00
	07/03/17	165	<1.00	<1.00	<1.00
	10/10/17	139	<1.00	<1.00	<1.00
	01/18/18	202	<1.00	<1.00	<1.00
		DESTROYED			

TABLE 2
GROUNDWATER ANALYTICAL RESULTS SUMMARY
CUSTY #1
SW 1/4 SW 1/4 SEC.15 T2S R66W 6PM
LAT/LONG: 39.87267/-104.76956
ADAMS COUNTY, COLORADO
REMEDATION PROJECT #9711

Sample Location (Latitude, Longitude)	Date	Benzene (µg/L)	Toluene (µg/L)	Ethylbenzene (µg/L)	Total Xylenes (µg/L)
COGCC Table 910-1 Regulatory Limits (µg/L)		5	560	700	1,400
MW-13R (39.87305505, -104.7700342)	04/26/18	<4.00	<4.00	<4.00	<4.00
	06/13/18	<1.00	<1.00	<1.00	<1.00
	09/24/18	<1.00	<1.00	<1.00	<1.00
	12/03/18	<1.00	<1.00	<1.00	<1.00
	03/01/19	<1.00	<1.00	<1.00	<1.00
MW-14 (39.87313118, -104.7695622)	08/04/16	<1.00	<1.00	<1.00	<1.00
	10/06/16	<1.00	<1.00	<1.00	<1.00
	01/11/17	<1.00	<1.00	<1.00	<1.00
	04/14/17	<1.00	<1.00	<1.00	<1.00
	07/03/17	<1.00	<1.00	<1.00	<1.00
	10/10/17	<1.00	<1.00	<1.00	<1.00
	01/18/18	<1.00	<1.00	<1.00	<1.00
	04/26/18	<1.00	<1.00	<1.00	<1.00
	06/13/18	<1.00	<1.00	<1.00	<1.00
	09/24/18	<1.00	<1.00	<1.00	<1.00
	12/03/18	<1.00	<1.00	<1.00	<1.00
	03/01/19	<1.00	<1.00	<1.00	<1.00

COGCC = Colorado Oil and Gas Conservation Commission

µg/L = micrograms per liter

< = indicates result is less than the stated laboratory reporting limit

Values presented in **bold** typeface exceed their respective COGCC Table 910-1 Regulatory Limit.

NOP = not on monitoring plan

INA = inaccessible

TABLE 3
GROUNDWATER ELEVATION AND PARAMETER SUMMARY
CUSTY #1
SW 1/4 SW 1/4 SEC.15 T2S R66W 6PM
LAT/LONG: 39.87267/-104.76956
ADAMS COUNTY, COLORADO
REMEDATION PROJECT #9711

Sample Location	Date	Depth to Groundwater (feet)	TOC Elevation (feet)	Relative Groundwater Elevation (feet)
MW-01	07/01/16	8.87	98.18	89.31
	10/06/16	9.24		88.94
	01/11/17	9.80		88.38
	04/14/17	10.10		88.08
	07/03/17	9.53		88.65
	10/10/17	10.52		87.66
	01/18/18	10.87		87.31
MW-01R	04/26/18	14.91	101.61	86.70
	06/13/18	14.52		87.09
	09/24/18	14.77		86.84
	12/03/18	15.12		86.49
	03/01/19	15.37		86.24
MW-02	07/01/16	16.56	100.00	83.44
	10/06/16	11.60		88.40
	01/11/17	12.29		87.71
	04/14/17	12.56		87.44
	07/03/17	11.69		88.31
	10/10/17	13.08		86.92
	01/18/18	13.50		86.50
	04/26/18	13.60		86.40
	06/13/18	13.54		86.46
	09/24/18	13.72		86.28
	12/03/18	14.01		85.99
	03/01/19	14.52		85.48
MW-03	07/01/16	9.08	99.00	89.92
	10/06/16	10.60		88.40
	01/11/17	11.10		87.90
	04/14/17	11.33		87.67
	07/03/17	10.25		88.75
	10/10/17	11.75		87.25
	01/18/18	12.22		86.78
	04/26/18	12.38		86.62
	06/13/18	12.28		86.72
	09/24/18	12.51		86.49
	12/03/18	12.79		86.21
	03/01/19	13.13		85.87

TABLE 3
GROUNDWATER ELEVATION AND PARAMETER SUMMARY
CUSTY #1
SW 1/4 SW 1/4 SEC.15 T2S R66W 6PM
LAT/LONG: 39.87267/-104.76956
ADAMS COUNTY, COLORADO
REMEDIAION PROJECT #9711

Sample Location	Date	Depth to Groundwater (feet)	TOC Elevation (feet)	Relative Groundwater Elevation (feet)
MW-04	07/01/16	6.35	97.18	90.83
	10/06/16	7.68		89.50
	01/11/17	8.32		88.86
	04/14/17	8.65		88.53
	07/03/17	7.98		89.20
	10/10/17	7.69		89.49
	01/18/18	9.42		87.76
	04/26/18	9.67		87.51
	06/13/18	11.59		85.59
	09/24/18	9.78		87.40
	12/03/18	10.09		87.09
	03/01/19	10.43		86.75
MW-05	07/01/16	7.30	98.02	90.72
	10/06/16	8.52		89.50
	01/11/17	9.03		88.99
	04/14/17	9.42		88.60
	07/03/17	8.95		89.07
	10/10/17	9.57		88.45
	01/18/18	10.20		87.82
	04/26/18	10.43		87.59
	06/13/18	10.35		87.67
	09/24/18	10.49		87.53
	12/03/18	10.91		87.11
	03/01/19	11.14		86.88
MW-06	07/01/16	8.08	98.20	90.12
	10/06/16	9.05		89.15
	01/11/17	9.72		88.48
	04/14/17	10.02		88.18
	07/03/17	INA		

TABLE 3
GROUNDWATER ELEVATION AND PARAMETER SUMMARY
CUSTY #1
SW 1/4 SW 1/4 SEC.15 T2S R66W 6PM
LAT/LONG: 39.87267/-104.76956
ADAMS COUNTY, COLORADO
REMEDIAION PROJECT #9711

Sample Location	Date	Depth to Groundwater (feet)	TOC Elevation (feet)	Relative Groundwater Elevation (feet)
MW-06R	10/10/17	13.75	101.64	87.89
	01/18/18	14.15		87.49
	04/26/18	14.50		87.14
	06/22/18	14.04		87.60
	09/24/18	14.38		87.26
	12/03/18	DRY		
	12/17/18	DRY		
	12/27/18	DRY		
	01/07/19	DRY		
	03/01/19	DRY		
	03/08/19	14.26		87.38
MW-07	07/01/16	8.96	97.46	88.50
	10/06/16	8.75		88.71
	01/11/17	9.49		87.97
	04/14/17	9.75		87.71
	07/03/17	9.11		88.35
MW-07R	10/10/17	13.99	100.39	86.40
	01/18/18	13.49		86.90
	04/26/18	13.74	100.32	86.58
	06/22/18	13.57		86.75
	09/24/18	13.66		86.66
	12/03/18	14.05		86.27
	03/01/19	14.23		86.09
MW-08	07/01/16	13.25	97.68	84.43
	10/06/16	10.15		87.53
	01/11/17	10.66		87.02
	04/14/17	10.93		86.75
	07/03/17	10.61		87.07
	10/10/17	11.50		86.18
	01/18/18	11.75		85.93
	04/26/18	11.90		85.78
	06/13/18	11.93		85.75
	09/24/18	12.28		85.40
	12/03/18	12.41		85.27
	03/01/19	12.55		85.13

TABLE 3
GROUNDWATER ELEVATION AND PARAMETER SUMMARY
CUSTY #1
SW 1/4 SW 1/4 SEC.15 T2S R66W 6PM
LAT/LONG: 39.87267/-104.76956
ADAMS COUNTY, COLORADO
REMEDIAL PROJECT #9711

Sample Location	Date	Depth to Groundwater (feet)	TOC Elevation (feet)	Relative Groundwater Elevation (feet)
MW-09	07/01/16	9.39	98.94	89.55
	10/06/16	10.44		88.50
	01/11/17	11.05		87.89
	04/14/17	11.33		87.61
	07/03/17	11.05		87.89
	10/10/17	11.67		87.27
	01/18/18	12.06		86.88
	04/26/18	12.29		86.65
	06/13/18	12.28		86.66
	09/24/18	12.54		86.40
	12/03/18	12.74		86.20
	03/01/19	12.96		85.98
MW-10	07/01/16	8.82	98.98	90.16
	10/06/16	9.83		89.15
	01/11/17	10.49		88.49
	04/14/17	10.86		88.12
	07/03/17	INA		
		DESTROYED		
MW-11	07/01/16	8.04	97.60	89.56
	10/06/16	7.62		89.98
	01/11/17	8.33		89.27
	04/14/17	8.61		88.99
	07/03/17	8.00		89.60
	10/10/17	NOP		
	01/18/18	9.34		88.26
		NOP		
MW-12	07/01/16	12.75	97.24	84.49
	10/06/16	7.76		89.48
	01/11/17	9.78		87.46
	04/14/17	8.60		88.64
	07/03/17	7.78		89.46
	10/10/17	NOP		
	01/18/18	9.40		87.84
		NOP		

TABLE 3
GROUNDWATER ELEVATION AND PARAMETER SUMMARY
CUSTY #1
SW 1/4 SW 1/4 SEC.15 T2S R66W 6PM
LAT/LONG: 39.87267/-104.76956
ADAMS COUNTY, COLORADO
REMEDATION PROJECT #9711

Sample Location	Date	Depth to Groundwater (feet)	TOC Elevation (feet)	Relative Groundwater Elevation (feet)
MW-13	08/04/16	18.93	99.29	80.36
	10/06/16	11.24		88.05
	01/11/17	11.95		87.34
	04/14/17	12.18		87.11
	07/03/17	11.33		87.96
	10/10/17	12.76		86.53
	01/18/18	13.08		86.21
MW-13R	04/26/18	13.09	98.99	85.90
	06/13/18	12.71		86.28
	09/24/18	13.07		85.92
	12/03/18	13.43		85.56
	03/01/19	13.58		85.41
MW-14	08/04/16	12.77	102.97	90.20
	10/06/16	13.41		89.56
	01/11/17	14.15		88.82
	04/14/17	14.52		88.45
	07/03/17	14.09		88.88
	10/10/17	14.66		88.31
	01/18/18	14.21		88.76
	04/26/18	13.09		89.88
	06/13/18	15.55		87.42
	09/24/18	15.62		87.35
	12/03/18	15.93		87.04
	03/01/19	16.20		86.77

TOC = Top of Casing

NOP = not on monitoring plan

INA = inaccessible

ATTACHMENT A

Laboratory Analytical Reports



December 06, 2018

Eagle Environmental Consulting, Inc.

Dan Coloccia

4101 Inca Street

Denver

CO 80211

Project Name - Custy #1

Project Number - [none]

Attached are your analytical results for Custy #1 received by Origins Laboratory, Inc. December 03, 2018. This project is associated with Origins project number Y812024-01.

The analytical results in the following report were analyzed under the guidelines of EPA Methods. These methods are identified as follows; "SW" are defined in SW-846, "EPA" are defined in 40CFR part 136 and "SM" are defined in the most current revision of Standard Methods For the Examination of Water and Wastewater.

The analytical results apply specifically to the samples and analyses specified per the attached Chain of Custody. As such, this report shall not be reproduced except in full, without the written approval of Origin's laboratory.

Unless otherwise noted, the analytical results for all soil samples are reported on a wet weight basis. All analytical analyses were performed under NELAP guidelines unless noted by a data qualifier.

Any holding time exceedances, deviations from the method specifications or deviations from Origins Laboratory's Standard Operating Procedures are outlined in the case narrative.

Thank you for selecting Origins for your analytical needs. Please contact us with any questions concerning this report, or if we can help with anything at all.

Origins Laboratory, Inc.
303.433.1322
o-squad@oelabinc.com



1725 Elk Place, Denver, CO 80211 | Phone: 303.433.1322 | Fax: 303.265.9645

Eagle Environmental Consulting, Inc.

4101 Inca Street

Denver CO 80211

Dan Coloccia

Project Number: [none]

Project: Custy #1

CROSS REFERENCE REPORT

Sample ID	Laboratory ID	Matrix	Date Sampled	Date Received
MW-01R	Y812024-01	Water	December 3, 2018 12:40	12/03/2018 14:49
MW-02	Y812024-02	Water	December 3, 2018 11:58	12/03/2018 14:49
MW-03	Y812024-03	Water	December 3, 2018 12:12	12/03/2018 14:49
MW-04	Y812024-04	Water	December 3, 2018 12:25	12/03/2018 14:49
MW-05	Y812024-05	Water	December 3, 2018 13:00	12/03/2018 14:49
MW-07R	Y812024-06	Water	December 3, 2018 13:55	12/03/2018 14:49
MW-08	Y812024-07	Water	December 3, 2018 11:09	12/03/2018 14:49
MW-09	Y812024-08	Water	December 3, 2018 14:10	12/03/2018 14:49
MW-13R	Y812024-09	Water	December 3, 2018 11:40	12/03/2018 14:49
MW-14	Y812024-10	Water	December 3, 2018 13:20	12/03/2018 14:49

Origins Laboratory, Inc.



The results in this report apply to the samples analyzed in accordance with the chain of custody document. This analytical report must be reproduced in its entirety.

Eagle Environmental Consulting, Inc.
4101 Inca Street
Denver CO 80211

Dan Coloccia
Project Number: [none]
Project: Custy #1

ORIGINS
LABORATORY, INC

www.originslaboratory.com

Y912024

page 1 of 1

Client: Eagle Environmental Consulting
Address: 4101 Inca St
Telephone Number: 303 433 0471
Email Address: DColoccia@Eagle-Enviro.com

Project Manager: Daniel Coloccia
Project Name: CUSTY #1
Project Number: Denver CO
Samples Collected By: Ken Cademartini

Sample ID Description	Date Sampled	Time Sampled	# of Containers	Preservative				Matrix				Analysis	Sample Instructions	
				Unpreserved	HCl	HNO ₃	Other	Groundwater	Soil	Air Summa Continer #	Other			
MW-01R	12-3-18	1240	3		X			X						1
MW-02		1158												2
MW-03		1212												3
MW-04		1225												4
MW-05		1300												5
MW-07R		1355												6
MW-08		1109												7
MW-09		1410												8
MW-13R		1140												9
MW-14		1320												10
Relinquished By: <u>[Signature]</u>	Date: <u>12-3-18</u>	Time: <u></u>	Received By: <u>[Signature]</u>	Date: <u>12-03-18</u>	Time: <u>1449</u>	Turnaround Time: <input type="checkbox"/> Same Day <input type="checkbox"/> 24 Hr <input checked="" type="checkbox"/> 48 Hr <input type="checkbox"/> 72 Hr <input checked="" type="checkbox"/> Standard								

Date Results Needed

Temp Received: 5.0

Origins Laboratory, Inc.

Jefe Pellegrini

The results in this report apply to the samples analyzed in accordance with the chain of custody document. This analytical report must be reproduced in its entirety.

Eagle Environmental Consulting, Inc.

4101 Inca Street

Denver CO 80211

Dan Coloccia

Project Number: [none]

Project: Custy #1

Origins Laboratory

F-012207-01-R1
Effective Date: 01/09/12

Sample Receipt Checklist

Origins Work Order: Y812024

Client: Eagle

Client Project ID: Custy #1

Checklist Completed by: JG

Shipped Via: HD

(UPS, FedEx, Hand Delivered, Pick-up, etc.)

Date/time completed: 12 / 4 / 2018

Airbill #: N/A

Matrix(s) Received: (Check all that apply): Soil/Solid ☒ Water ☐ Other: ☐ (Describe)

Cooler Number/Temperature: 1 / 5.0 °C 1 / 1 °C 1 / 1 °C 1 / 1 °C

Thermometer ID: T003

Requirement Description	Yes	No	N/A	Comments (if any)
If samples require cooling, was the temperature between 0°C to ≤ 6°C ⁽¹⁾ ?	<input checked="" type="checkbox"/>	<input type="checkbox"/>	<input type="checkbox"/>	
Is there ice present (document if blue ice is used)	<input checked="" type="checkbox"/>	<input type="checkbox"/>	<input type="checkbox"/>	
Are custody seals present on cooler? (If so, document in comments if they are signed and dated, broken or intact)	<input type="checkbox"/>	<input checked="" type="checkbox"/>	<input type="checkbox"/>	
Are custody seals present on each sample container? (if so, document in comments if they are signed and dated, broken or intact)	<input type="checkbox"/>	<input checked="" type="checkbox"/>	<input type="checkbox"/>	
Were all samples received intact ⁽¹⁾ ?	<input checked="" type="checkbox"/>	<input type="checkbox"/>	<input type="checkbox"/>	
Was adequate sample volume provided ⁽¹⁾ ?	<input checked="" type="checkbox"/>	<input type="checkbox"/>	<input type="checkbox"/>	
Are short holding time analytes or samples with HTs due within 48 hours present ⁽¹⁾ ?	<input type="checkbox"/>	<input checked="" type="checkbox"/>	<input type="checkbox"/>	
Is a chain-of-custody (COC) present and filled out completely ⁽¹⁾ ?	<input checked="" type="checkbox"/>	<input type="checkbox"/>	<input type="checkbox"/>	
Does the COC agree with the number and type of sample bottles received ⁽¹⁾ ?	<input checked="" type="checkbox"/>	<input type="checkbox"/>	<input type="checkbox"/>	
Do the sample IDs on the bottle labels match the COC ⁽¹⁾ ?	<input checked="" type="checkbox"/>	<input type="checkbox"/>	<input type="checkbox"/>	
Is the COC properly relinquished by the client with date and time recorded ⁽¹⁾ ?	<input checked="" type="checkbox"/>	<input type="checkbox"/>	<input type="checkbox"/>	
For volatiles in water — Is there headspace (> ¼ inch bubble) present? If yes, contact client and note in narrative.	<input type="checkbox"/>	<input checked="" type="checkbox"/>	<input type="checkbox"/>	
Are samples preserved that require preservation and was it checked ⁽¹⁾ ? (note ID of confirmation instrument used in comments) / (preservation is not confirmed for subcontracted analyses in order to insure sample integrity)/(pH <2 for samples preserved with HNO ₃ , HCL, H ₂ SO ₄) / (pH >10 for samples preserved with NaAsO ₂ +NaOH, ZnAc+NaOH)	<input type="checkbox"/>	<input checked="" type="checkbox"/>	<input type="checkbox"/>	
Additional Comments (if any):				

⁽¹⁾ If NO, then contact the client before proceeding with analysis and note date/time and person contacted as well as the corrective action to in the additional comments (above) and the case narrative.

Reviewed by (Project Manager) [Signature]

Date/Time Reviewed 12/5/18

Origins Laboratory, Inc.

Jefe Pellegrini

The results in this report apply to the samples analyzed in accordance with the chain of custody document. This analytical report must be reproduced in its entirety.

Eagle Environmental Consulting, Inc.
4101 Inca Street
Denver CO 80211

Dan Coloccia
Project Number: [none]
Project: Custy #1

MW-01R

12/3/2018 12:40:00PM

Analyte	Result	Reporting Limit	Units	Dilution	Batch	Analyst	Prepared	Analyzed	Notes
---------	--------	-----------------	-------	----------	-------	---------	----------	----------	-------

Origins Laboratory, Inc. Y812024-01 (Water)

BTEX by EPA 8260C

Benzene	ND	1.00	ug/L	1	B8L0505	JTD	12/05/2018	12/05/2018	U
Toluene	ND	1.00	"	"	"	JTD	"	"	U
Ethylbenzene	ND	1.00	"	"	"	JTD	"	"	U
Xylenes, total	ND	1.00	"	"	"	JTD	"	"	U

Surrogate: 1,2-Dichloroethane-d4	108 %	84-121	"	"	"
Surrogate: Toluene-d8	96.4 %	85-115	"	"	"
Surrogate: 4-Bromofluorobenzene	103 %	84-114	"	"	"

Origins Laboratory, Inc.



The results in this report apply to the samples analyzed in accordance with the chain of custody document. This analytical report must be reproduced in its entirety.

Eagle Environmental Consulting, Inc.
4101 Inca Street
Denver CO 80211

Dan Coloccia
Project Number: [none]
Project: Custy #1

MW-02

12/3/2018 11:58:00AM

Analyte	Result	Reporting Limit	Units	Dilution	Batch	Analyst	Prepared	Analyzed	Notes
---------	--------	-----------------	-------	----------	-------	---------	----------	----------	-------

Origins Laboratory, Inc. Y812024-02 (Water)

BTEX by EPA 8260C

Benzene	ND	1.00	ug/L	1	B8L0505	JTD	12/05/2018	12/05/2018	U
Toluene	ND	1.00	"	"	"	JTD	"	"	U
Ethylbenzene	ND	1.00	"	"	"	JTD	"	"	U
Xylenes, total	ND	1.00	"	"	"	JTD	"	"	U

Surrogate: 1,2-Dichloroethane-d4	109 %	84-121	"	"	"
Surrogate: Toluene-d8	95.9 %	85-115	"	"	"
Surrogate: 4-Bromofluorobenzene	101 %	84-114	"	"	"

Origins Laboratory, Inc.



The results in this report apply to the samples analyzed in accordance with the chain of custody document. This analytical report must be reproduced in its entirety.

Eagle Environmental Consulting, Inc.
4101 Inca Street
Denver CO 80211

Dan Coloccia
Project Number: [none]
Project: Custy #1

MW-03

12/3/2018 12:12:00PM

Analyte	Result	Reporting Limit	Units	Dilution	Batch	Analyst	Prepared	Analyzed	Notes
---------	--------	-----------------	-------	----------	-------	---------	----------	----------	-------

Origins Laboratory, Inc. Y812024-03 (Water)

BTEX by EPA 8260C

Benzene	ND	1.00	ug/L	1	B8L0505	JTD	12/05/2018	12/05/2018	U
Toluene	ND	1.00	"	"	"	JTD	"	"	U
Ethylbenzene	ND	1.00	"	"	"	JTD	"	"	U
Xylenes, total	ND	1.00	"	"	"	JTD	"	"	U

Surrogate: 1,2-Dichloroethane-d4	107 %	84-121	"	"	"
Surrogate: Toluene-d8	96.2 %	85-115	"	"	"
Surrogate: 4-Bromofluorobenzene	103 %	84-114	"	"	"

Origins Laboratory, Inc.



The results in this report apply to the samples analyzed in accordance with the chain of custody document. This analytical report must be reproduced in its entirety.

Eagle Environmental Consulting, Inc.
4101 Inca Street
Denver CO 80211

Dan Coloccia
Project Number: [none]
Project: Custy #1

MW-04

12/3/2018 12:25:00PM

Analyte	Result	Reporting Limit	Units	Dilution	Batch	Analyst	Prepared	Analyzed	Notes
---------	--------	-----------------	-------	----------	-------	---------	----------	----------	-------

Origins Laboratory, Inc. Y812024-04 (Water)

BTEX by EPA 8260C

Benzene	ND	1.00	ug/L	1	B8L0505	JTD	12/05/2018	12/05/2018	U
Toluene	ND	1.00	"	"	"	JTD	"	"	U
Ethylbenzene	1.82	1.00	"	"	"	JTD	"	"	
Xylenes, total	ND	1.00	"	"	"	JTD	"	"	U

Surrogate: 1,2-Dichloroethane-d4	102 %	84-121	"	"	"
Surrogate: Toluene-d8	96.6 %	85-115	"	"	"
Surrogate: 4-Bromofluorobenzene	102 %	84-114	"	"	"

Origins Laboratory, Inc.



The results in this report apply to the samples analyzed in accordance with the chain of custody document. This analytical report must be reproduced in its entirety.

Eagle Environmental Consulting, Inc.

4101 Inca Street

Denver CO 80211

Dan Coloccia

Project Number: [none]

Project: Custy #1

MW-05

12/3/2018 1:00:00PM

Analyte	Result	Reporting Limit	Units	Dilution	Batch	Analyst	Prepared	Analyzed	Notes
---------	--------	-----------------	-------	----------	-------	---------	----------	----------	-------

Origins Laboratory, Inc.

Y812024-05 (Water)

BTEX by EPA 8260C

Benzene	ND	1.00	ug/L	1	B8L0505	JTD	12/05/2018	12/05/2018	U
Toluene	ND	1.00	"	"	"	JTD	"	"	U
Ethylbenzene	ND	1.00	"	"	"	JTD	"	"	U
Xylenes, total	ND	1.00	"	"	"	JTD	"	"	U

Surrogate: 1,2-Dichloroethane-d4

106 %

84-121

"

"

"

Surrogate: Toluene-d8

97.5 %

85-115

"

"

"

Surrogate: 4-Bromofluorobenzene

101 %

84-114

"

"

"

Origins Laboratory, Inc.



The results in this report apply to the samples analyzed in accordance with the chain of custody document. This analytical report must be reproduced in its entirety.

Eagle Environmental Consulting, Inc.
4101 Inca Street
Denver CO 80211

Dan Coloccia
Project Number: [none]
Project: Custy #1

MW-07R

12/3/2018 1:55:00PM

Analyte	Result	Limit	Units	Dilution	Batch	Analyst	Prepared	Analyzed	Notes
---------	--------	-------	-------	----------	-------	---------	----------	----------	-------

Origins Laboratory, Inc. Y812024-06 (Water)

BTEX by EPA 8260C

Benzene	ND	1.00	ug/L	1	B8L0505	JTD	12/05/2018	12/06/2018	U
Toluene	ND	1.00	"	"	"	JTD	"	"	U
Ethylbenzene	ND	1.00	"	"	"	JTD	"	"	U
Xylenes, total	ND	1.00	"	"	"	JTD	"	"	U

Surrogate: 1,2-Dichloroethane-d4	103 %	84-121	"	"	"
Surrogate: Toluene-d8	95.6 %	85-115	"	"	"
Surrogate: 4-Bromofluorobenzene	103 %	84-114	"	"	"

Origins Laboratory, Inc.



The results in this report apply to the samples analyzed in accordance with the chain of custody document. This analytical report must be reproduced in its entirety.

Eagle Environmental Consulting, Inc.
4101 Inca Street
Denver CO 80211

Dan Coloccia
Project Number: [none]
Project: Custy #1

MW-08

12/3/2018 11:09:00AM

Analyte	Result	Reporting Limit	Units	Dilution	Batch	Analyst	Prepared	Analyzed	Notes
---------	--------	-----------------	-------	----------	-------	---------	----------	----------	-------

Origins Laboratory, Inc. Y812024-07 (Water)

BTEX by EPA 8260C

Benzene	ND	1.00	ug/L	1	B8L0505	JTD	12/05/2018	12/06/2018	U
Toluene	ND	1.00	"	"	"	JTD	"	"	U
Ethylbenzene	ND	1.00	"	"	"	JTD	"	"	U
Xylenes, total	ND	1.00	"	"	"	JTD	"	"	U

Surrogate: 1,2-Dichloroethane-d4	107 %	84-121	"	"	"
Surrogate: Toluene-d8	95.9 %	85-115	"	"	"
Surrogate: 4-Bromofluorobenzene	103 %	84-114	"	"	"

Origins Laboratory, Inc.



The results in this report apply to the samples analyzed in accordance with the chain of custody document. This analytical report must be reproduced in its entirety.

Eagle Environmental Consulting, Inc.
4101 Inca Street
Denver CO 80211

Dan Coloccia
Project Number: [none]
Project: Custy #1

MW-09
12/3/2018 2:10:00PM

Analyte	Result	Limit	Units	Dilution	Batch	Analyst	Prepared	Analyzed	Notes
---------	--------	-------	-------	----------	-------	---------	----------	----------	-------

Origins Laboratory, Inc.
Y812024-08 (Water)

BTEX by EPA 8260C

Benzene	ND	1.00	ug/L	1	B8L0505	JTD	12/05/2018	12/06/2018	U
Toluene	ND	1.00	"	"	"	JTD	"	"	U
Ethylbenzene	ND	1.00	"	"	"	JTD	"	"	U
Xylenes, total	ND	1.00	"	"	"	JTD	"	"	U

Surrogate: 1,2-Dichloroethane-d4	105 %	84-121	"	"	"
Surrogate: Toluene-d8	95.8 %	85-115	"	"	"
Surrogate: 4-Bromofluorobenzene	103 %	84-114	"	"	"

Origins Laboratory, Inc.



The results in this report apply to the samples analyzed in accordance with the chain of custody document. This analytical report must be reproduced in its entirety.

Eagle Environmental Consulting, Inc.

4101 Inca Street

Denver CO 80211

Dan Coloccia

Project Number: [none]

Project: Custy #1

MW-13R

12/3/2018 11:40:00AM

Analyte	Result	Reporting Limit	Units	Dilution	Batch	Analyst	Prepared	Analyzed	Notes
---------	--------	--------------------	-------	----------	-------	---------	----------	----------	-------

Origins Laboratory, Inc.

Y812024-09 (Water)

BTEX by EPA 8260C

Benzene	ND	1.00	ug/L	1	B8L0505	JTD	12/05/2018	12/06/2018	U
Toluene	ND	1.00	"	"	"	JTD	"	"	U
Ethylbenzene	ND	1.00	"	"	"	JTD	"	"	U
Xylenes, total	ND	1.00	"	"	"	JTD	"	"	U

Surrogate: 1,2-Dichloroethane-d4	106 %	84-121	"	"	"
Surrogate: Toluene-d8	96.7 %	85-115	"	"	"
Surrogate: 4-Bromofluorobenzene	107 %	84-114	"	"	"

Origins Laboratory, Inc.



The results in this report apply to the samples analyzed in accordance with the chain of custody document. This analytical report must be reproduced in its entirety.

Eagle Environmental Consulting, Inc.
4101 Inca Street
Denver CO 80211

Dan Coloccia
Project Number: [none]
Project: Custy #1

MW-14

12/3/2018 1:20:00PM

Analyte	Result	Limit	Units	Dilution	Batch	Analyst	Prepared	Analyzed	Notes
---------	--------	-------	-------	----------	-------	---------	----------	----------	-------

Origins Laboratory, Inc. Y812024-10 (Water)

BTEX by EPA 8260C

Benzene	ND	1.00	ug/L	1	B8L0505	JTD	12/05/2018	12/06/2018	U
Toluene	ND	1.00	"	"	"	JTD	"	"	U
Ethylbenzene	ND	1.00	"	"	"	JTD	"	"	U
Xylenes, total	ND	1.00	"	"	"	JTD	"	"	U

Surrogate: 1,2-Dichloroethane-d4	106 %	84-121	"	"	"
Surrogate: Toluene-d8	95.9 %	85-115	"	"	"
Surrogate: 4-Bromofluorobenzene	102 %	84-114	"	"	"

Origins Laboratory, Inc.



The results in this report apply to the samples analyzed in accordance with the chain of custody document. This analytical report must be reproduced in its entirety.

Eagle Environmental Consulting, Inc.
4101 Inca Street
Denver CO 80211

Dan Coloccia
Project Number: [none]
Project: Custy #1

Volatile Organic Compounds by GC/MS SW846 8260C - Quality Control
Origins Laboratory, Inc.

Analyte	Result	Reporting Limit	Units	Spike Level	Source Result	%REC	%REC Limits	RPD	RPD Limit	Notes
Batch B8L0505 - EPA 5030B (Water)										
Blank (B8L0505-BLK1)					Prepared: 12/05/2018 Analyzed: 12/05/2018					
Benzene	ND	1.00	ug/L							U
Toluene	ND	1.00	"							U
Ethylbenzene	ND	1.00	"							U
Xylenes, total	ND	1.00	"							U
Surrogate: 1,2-Dichloroethane-d4	70		"	62.5	113		84-121			
Surrogate: Toluene-d8	60		"	62.5	95.5		85-115			
Surrogate: 4-Bromofluorobenzene	63		"	62.5	100		84-114			

Origins Laboratory, Inc.



The results in this report apply to the samples analyzed in accordance with the chain of custody document. This analytical report must be reproduced in its entirety.

Eagle Environmental Consulting, Inc.

4101 Inca Street

Denver CO 80211

Dan Coloccia

Project Number: [none]

Project: Custy #1

Volatile Organic Compounds by GC/MS SW846 8260C - Quality Control
Origins Laboratory, Inc.

Analyte	Result	Reporting Limit	Units	Spike Level	Source Result	%REC	%REC Limits	RPD	RPD Limit	Notes
---------	--------	-----------------	-------	-------------	---------------	------	-------------	-----	-----------	-------

Batch B8L0505 - EPA 5030B (Water)

LCS (B8L0505-BS1)

Prepared: 12/05/2018 Analyzed: 12/05/2018

Benzene	49.5	1.00	ug/L	50.0		98.9	73.3-129
Toluene	48.4	1.00	"	50.0		96.8	76.2-123
Ethylbenzene	46.0	1.00	"	50.0		91.9	73.6-130
m,p-Xylene	93.1	2.00	"	100		93.1	76.1-126
o-Xylene	45.7	1.00	"	50.0		91.5	76.6-124
Surrogate: 1,2-Dichloroethane-d4	66		"	62.5		106	84-121
Surrogate: Toluene-d8	61		"	62.5		97.8	85-115
Surrogate: 4-Bromofluorobenzene	61		"	62.5		97.6	84-114

Origins Laboratory, Inc.



The results in this report apply to the samples analyzed in accordance with the chain of custody document. This analytical report must be reproduced in its entirety.

Eagle Environmental Consulting, Inc.
4101 Inca Street
Denver CO 80211

Dan Coloccia
Project Number: [none]
Project: Custy #1

Volatile Organic Compounds by GC/MS SW846 8260C - Quality Control
Origins Laboratory, Inc.

Analyte	Result	Reporting Limit	Units	Spike Level	Source Result	%REC	%REC Limits	RPD	RPD Limit	Notes
---------	--------	-----------------	-------	-------------	---------------	------	-------------	-----	-----------	-------

Batch B8L0505 - EPA 5030B (Water)

Matrix Spike (B8L0505-MS1)		Source: Y812005-01			Prepared: 12/05/2018 Analyzed: 12/05/2018					
Benzene	54.4	1.00	ug/L	50.0	0.240	108	74-130			
Toluene	55.2	1.00	"	50.0	0.190	110	73-131			
Ethylbenzene	57.8	1.00	"	50.0	0.380	115	76-132			
m,p-Xylene	117	2.00	"	100	0.990	116	69-139			
o-Xylene	55.8	1.00	"	50.0	0.410	111	74-131			
Surrogate: 1,2-Dichloroethane-d4	53		"	62.5		85.2	84-121			
Surrogate: Toluene-d8	63		"	62.5		100	85-115			
Surrogate: 4-Bromofluorobenzene	68		"	62.5		108	84-114			

Origins Laboratory, Inc.



The results in this report apply to the samples analyzed in accordance with the chain of custody document. This analytical report must be reproduced in its entirety.

Jen Pellegrini For Noelle Doyle Mathis, President

Eagle Environmental Consulting, Inc.
4101 Inca Street
Denver CO 80211

Dan Coloccia
Project Number: [none]
Project: Custy #1

Volatile Organic Compounds by GC/MS SW846 8260C - Quality Control
Origins Laboratory, Inc.

Analyte	Result	Reporting Limit	Units	Spike Level	Source Result	%REC	%REC Limits	RPD	RPD Limit	Notes
---------	--------	-----------------	-------	-------------	---------------	------	-------------	-----	-----------	-------

Batch B8L0505 - EPA 5030B (Water)

Matrix Spike Dup (B8L0505-MSD1)		Source: Y812005-01			Prepared: 12/05/2018 Analyzed: 12/05/2018					
Benzene	53.2	1.00	ug/L	50.0	0.240	106	74-130	2.23	20	
Toluene	53.5	1.00	"	50.0	0.190	107	73-131	3.18	20	
Ethylbenzene	54.5	1.00	"	50.0	0.380	108	76-132	5.81	20	
m,p-Xylene	109	2.00	"	100	0.990	108	69-139	7.16	20	
o-Xylene	52.5	1.00	"	50.0	0.410	104	74-131	6.06	20	
Surrogate: 1,2-Dichloroethane-d4	56		"	62.5		89.0	84-121			
Surrogate: Toluene-d8	63		"	62.5		101	85-115			
Surrogate: 4-Bromofluorobenzene	66		"	62.5		106	84-114			

Origins Laboratory, Inc.



The results in this report apply to the samples analyzed in accordance with the chain of custody document. This analytical report must be reproduced in its entirety.

Jen Pellegrini For Noelle Doyle Mathis, President

Eagle Environmental Consulting, Inc.

4101 Inca Street

Denver CO 80211

Dan Coloccia

Project Number: [none]

Project: Custy #1

Notes and Definitions

U Sample is Non-Detect.

ND Analyte NOT DETECTED at or above the reporting limit

RPD Relative Percent Difference

All soil results are reported at a wet weight basis.

Origins Laboratory, Inc.



The results in this report apply to the samples analyzed in accordance with the chain of custody document. This analytical report must be reproduced in its entirety.

Jen Pellegrini For Noelle Doyle Mathis, President



March 07, 2019

Eagle Environmental Consulting, Inc.

Dan Coloccia

4101 Inca Street

Denver

CO 80211

Project Name - Custy #1

Project Number - [none]

Attached are your analytical results for Custy #1 received by Origins Laboratory, Inc. March 01, 2019. This project is associated with Origins project number Y903031-01.

The analytical results in the following report were analyzed under the guidelines of EPA Methods. These methods are identified as follows; "SW" are defined in SW-846, "EPA" are defined in 40CFR part 136 and "SM" are defined in the most current revision of Standard Methods For the Examination of Water and Wastewater.

The analytical results apply specifically to the samples and analyses specified per the attached Chain of Custody. As such, this report shall not be reproduced except in full, without the written approval of Origin's laboratory.

Unless otherwise noted, the analytical results for all soil samples are reported on a wet weight basis. All analytical analyses were performed under NELAP guidelines unless noted by a data qualifier.

Any holding time exceedances, deviations from the method specifications or deviations from Origins Laboratory's Standard Operating Procedures are outlined in the case narrative.

Thank you for selecting Origins for your analytical needs. Please contact us with any questions concerning this report, or if we can help with anything at all.

Origins Laboratory, Inc.
303.433.1322
o-squad@oelabinc.com



1725 Elk Place, Denver, CO 80211 | Phone: 303.433.1322 | Fax: 303.265.9645

Eagle Environmental Consulting, Inc.

4101 Inca Street

Denver CO 80211

Dan Coloccia

Project Number: [none]

Project: Custy #1

CROSS REFERENCE REPORT

Sample ID	Laboratory ID	Matrix	Date Sampled	Date Received
MW-01R	Y903031-01	Water	March 1, 2019 13:40	03/01/2019 15:30
MW-02	Y903031-02	Water	March 1, 2019 13:55	03/01/2019 15:30
MW-03	Y903031-03	Water	March 1, 2019 13:30	03/01/2019 15:30
MW-04	Y903031-04	Water	March 1, 2019 13:20	03/01/2019 15:30
MW-05	Y903031-05	Water	March 1, 2019 13:15	03/01/2019 15:30
MW-07R	Y903031-06	Water	March 1, 2019 14:45	03/01/2019 15:30
MW-08	Y903031-07	Water	March 1, 2019 14:20	03/01/2019 15:30
MW-09	Y903031-08	Water	March 1, 2019 12:50	03/01/2019 15:30
MW-13R	Y903031-09	Water	March 1, 2019 14:10	03/01/2019 15:30
MW-14	Y903031-10	Water	March 1, 2019 13:05	03/01/2019 15:30

Origins Laboratory, Inc.



The results in this report apply to the samples analyzed in accordance with the chain of custody document. This analytical report must be reproduced in its entirety.

Eagle Environmental Consulting, Inc.
4101 Inca Street
Denver CO 80211

Dan Coloccia
Project Number: [none]
Project: Custy #1

www.originslaboratory.com

1903031

page 1 of 1

ORIGINS
LABORATORY, INC

Client: Eagle
Address: 4101 Inca Street
Denver CO 80211
Telephone Number: 303 433 0479
Email Address: dcoloccia@eagle-enviro.com

Project Manager: Daniel Coloccia
Project Name: CUSTY #1
Project Number: 60720
Samples Collected By: JG

Sample ID Description	Date Sampled	Time Sampled	# of Containers	Preservative				Matrix			Analysis		Sample Instructions
				Unpreserved	HCl	HNO ₃	Other	Groundwater	Soil	Air Summa Canister #	Other		
MW-01R	3-1-2019	1340	3	X				X					1
MW-02		1355	3										2
MW-03		1330	3										3
MW-04		1320	3										4
MW-05		1315	3										5
MW-07R		1445	1										6
MW-08		1420	2										7
MW-09		1250	3										8
MW-13R		1410	3										9
MW-14		1305	3										10
Relinquished By: <u>JG</u>	Date: <u>3-1-19</u>	Time: <u>1530</u>		Received By: <u>[Signature]</u>	Date: <u>3-1-19</u>	Time: <u>1530</u>		Turnaround Time: Same Day <input type="checkbox"/> 24 Hr <input type="checkbox"/> 48 Hr <input type="checkbox"/> 72 Hr <input checked="" type="checkbox"/> Standard					

Date Results Needed

Temp Received: 17

Origins Laboratory, Inc.

Jefe Pellegrini

The results in this report apply to the samples analyzed in accordance with the chain of custody document. This analytical report must be reproduced in its entirety.

Eagle Environmental Consulting, Inc.
4101 Inca Street
Denver CO 80211

Dan Coloccia
Project Number: [none]
Project: Custy #1

Origins Laboratory

F-012207-01-R1
Effective Date: 01/09/12

Sample Receipt Checklist

Origins Work Order: Y903031

Client: Eagle
Client Project ID: Custy #1

Checklist Completed by: JG
Date/time completed: 3 / 4 / 2019

Shipped Via: HD
(UPS, FedEx, Hand Delivered, Pick-up, etc.)
Airbill #: N/A

Matrix(s) Received: (Check all that apply): Soil/Solid ☒ Water ☐ Other: ☐

Cooler Number/Temperature: 1 / 1.7 °C / °C / °C / °C (Describe)

Thermometer ID: T003

Requirement Description	Yes	No	N/A	Comments (if any)
If samples require cooling, was the temperature between 0°C to ≤ 6°C ⁽¹⁾ ?	<input checked="" type="checkbox"/>	<input type="checkbox"/>	<input type="checkbox"/>	
Is there ice present (document if blue ice is used)	<input checked="" type="checkbox"/>	<input type="checkbox"/>	<input type="checkbox"/>	
Are custody seals present on cooler? (if so, document in comments if they are signed and dated, broken or intact)	<input type="checkbox"/>	<input checked="" type="checkbox"/>	<input type="checkbox"/>	
Are custody seals present on each sample container? (if so, document in comments if they are signed and dated, broken or intact)	<input type="checkbox"/>	<input checked="" type="checkbox"/>	<input type="checkbox"/>	
Were all samples received intact ⁽¹⁾ ?	<input checked="" type="checkbox"/>	<input type="checkbox"/>	<input type="checkbox"/>	
Was adequate sample volume provided ⁽¹⁾ ?	<input checked="" type="checkbox"/>	<input type="checkbox"/>	<input type="checkbox"/>	
Are short holding time analytes or samples with HTs due within 48 hours present ⁽¹⁾ ?	<input type="checkbox"/>	<input checked="" type="checkbox"/>	<input type="checkbox"/>	
Is a chain-of-custody (COC) present and filled out completely ⁽¹⁾ ?	<input checked="" type="checkbox"/>	<input type="checkbox"/>	<input type="checkbox"/>	
Does the COC agree with the number and type of sample bottles received ⁽¹⁾ ?	<input checked="" type="checkbox"/>	<input type="checkbox"/>	<input type="checkbox"/>	
Do the sample IDs on the bottle labels match the COC ⁽¹⁾ ?	<input checked="" type="checkbox"/>	<input type="checkbox"/>	<input type="checkbox"/>	
Is the COC properly relinquished by the client with date and time recorded ⁽¹⁾ ?	<input checked="" type="checkbox"/>	<input type="checkbox"/>	<input type="checkbox"/>	
For volatiles in water – is there headspace (> ¼ inch bubble) present? If yes, contact client and note in narrative.	<input type="checkbox"/>	<input checked="" type="checkbox"/>	<input type="checkbox"/>	
Are samples preserved that require preservation and was it checked ⁽¹⁾ ? (note ID of confirmation instrument used in comments) / (preservation is not confirmed for subcontracted analyses in order to insure sample integrity)/(pH <2 for samples preserved with HNO ₃ , HCl, H ₂ SO ₄) / (pH >10 for samples preserved with NaAsO ₂ +NaOH, ZnAc+NaOH)	<input type="checkbox"/>	<input checked="" type="checkbox"/>	<input type="checkbox"/>	
Additional Comments (if any):				

⁽¹⁾If NO, then contact the client before proceeding with analysis and note date/time and person contacted as well as the corrective action to in the additional comments (above) and the case narrative.

Reviewed by (Project Manager) [Signature]

Date/Time Reviewed 3/5/19

Origins Laboratory, Inc.

[Signature]

The results in this report apply to the samples analyzed in accordance with the chain of custody document. This analytical report must be reproduced in its entirety.

Eagle Environmental Consulting, Inc.
4101 Inca Street
Denver CO 80211

Dan Coloccia
Project Number: [none]
Project: Custy #1

MW-01R

3/1/2019 1:40:00PM

Analyte	Result	Limit	Units	Dilution	Batch	Analyst	Prepared	Analyzed	Notes
---------	--------	-------	-------	----------	-------	---------	----------	----------	-------

Origins Laboratory, Inc. Y903031-01 (Water)

BTEX by EPA 8260C

Benzene	ND	1.00	ug/L	1	B9C0407	JTD	03/04/2019	03/05/2019	U
Toluene	ND	1.00	"	"	"	JTD	"	"	U
Ethylbenzene	ND	1.00	"	"	"	JTD	"	"	U
Xylenes, total	ND	1.00	"	"	"	JTD	"	"	U

Surrogate: 1,2-Dichloroethane-d4	108 %	84-121	"	"	"
Surrogate: Toluene-d8	100 %	85-115	"	"	"
Surrogate: 4-Bromofluorobenzene	102 %	84-114	"	"	"

Origins Laboratory, Inc.



The results in this report apply to the samples analyzed in accordance with the chain of custody document. This analytical report must be reproduced in its entirety.

Eagle Environmental Consulting, Inc.
4101 Inca Street
Denver CO 80211

Dan Coloccia
Project Number: [none]
Project: Custy #1

MW-02

3/1/2019 1:55:00PM

Analyte	Result	Reporting Limit	Units	Dilution	Batch	Analyst	Prepared	Analyzed	Notes
---------	--------	-----------------	-------	----------	-------	---------	----------	----------	-------

Origins Laboratory, Inc.
Y903031-02 (Water)

BTEX by EPA 8260C

Benzene	ND	1.00	ug/L	1	B9C0407	JTD	03/04/2019	03/04/2019	U
Toluene	ND	1.00	"	"	"	JTD	"	"	U
Ethylbenzene	ND	1.00	"	"	"	JTD	"	"	U
Xylenes, total	ND	1.00	"	"	"	JTD	"	"	U

Surrogate: 1,2-Dichloroethane-d4	120 %	84-121	"	"	"
Surrogate: Toluene-d8	97.7 %	85-115	"	"	"
Surrogate: 4-Bromofluorobenzene	102 %	84-114	"	"	"

Origins Laboratory, Inc.



The results in this report apply to the samples analyzed in accordance with the chain of custody document. This analytical report must be reproduced in its entirety.

Eagle Environmental Consulting, Inc.
4101 Inca Street
Denver CO 80211

Dan Coloccia
Project Number: [none]
Project: Custy #1

MW-03

3/1/2019 1:30:00PM

Analyte	Result	Limit	Units	Dilution	Batch	Analyst	Prepared	Analyzed	Notes
---------	--------	-------	-------	----------	-------	---------	----------	----------	-------

Origins Laboratory, Inc. Y903031-03 (Water)

BTEX by EPA 8260C

Benzene	ND	1.00	ug/L	1	B9C0407	JTD	03/04/2019	03/04/2019	U
Toluene	ND	1.00	"	"	"	JTD	"	"	U
Ethylbenzene	ND	1.00	"	"	"	JTD	"	"	U
Xylenes, total	ND	1.00	"	"	"	JTD	"	"	U

Surrogate: 1,2-Dichloroethane-d4	127 %	84-121	"	"	"	"	"	"	S-07
Surrogate: Toluene-d8	96.1 %	85-115	"	"	"	"	"	"	
Surrogate: 4-Bromofluorobenzene	99.4 %	84-114	"	"	"	"	"	"	

Origins Laboratory, Inc.



The results in this report apply to the samples analyzed in accordance with the chain of custody document. This analytical report must be reproduced in its entirety.

Eagle Environmental Consulting, Inc.
4101 Inca Street
Denver CO 80211

Dan Coloccia
Project Number: [none]
Project: Custy #1

MW-04

3/1/2019 1:20:00PM

Analyte	Result	Limit	Units	Dilution	Batch	Analyst	Prepared	Analyzed	Notes
---------	--------	-------	-------	----------	-------	---------	----------	----------	-------

Origins Laboratory, Inc. Y903031-04 (Water)

BTEX by EPA 8260C

Benzene	ND	1.00	ug/L	1	B9C0407	JTD	03/04/2019	03/04/2019	U
Toluene	ND	1.00	"	"	"	JTD	"	"	U
Ethylbenzene	4.75	1.00	"	"	"	JTD	"	"	
Xylenes, total	ND	1.00	"	"	"	JTD	"	"	U

Surrogate: 1,2-Dichloroethane-d4	120 %	84-121	"	"	"
Surrogate: Toluene-d8	97.7 %	85-115	"	"	"
Surrogate: 4-Bromofluorobenzene	98.9 %	84-114	"	"	"

Origins Laboratory, Inc.



The results in this report apply to the samples analyzed in accordance with the chain of custody document. This analytical report must be reproduced in its entirety.

Eagle Environmental Consulting, Inc.

4101 Inca Street

Denver CO 80211

Dan Coloccia

Project Number: [none]

Project: Custy #1

MW-05**3/1/2019 1:15:00PM**

Analyte	Result	Reporting		Units	Dilution	Batch	Analyst	Prepared	Analyzed	Notes
		Limit								

Origins Laboratory, Inc.**Y903031-05 (Water)****BTEX by EPA 8260C**

Benzene	ND	1.00	ug/L	1	B9C0407	JTD	03/04/2019	03/04/2019	U
Toluene	ND	1.00	"	"	"	JTD	"	"	U
Ethylbenzene	ND	1.00	"	"	"	JTD	"	"	U
Xylenes, total	ND	1.00	"	"	"	JTD	"	"	U

Surrogate: 1,2-Dichloroethane-d4

120 %

84-121

"

"

"

Surrogate: Toluene-d8

96.7 %

85-115

"

"

"

Surrogate: 4-Bromofluorobenzene

100 %

84-114

"

"

"

Origins Laboratory, Inc.



The results in this report apply to the samples analyzed in accordance with the chain of custody document. This analytical report must be reproduced in its entirety.

Eagle Environmental Consulting, Inc.
4101 Inca Street
Denver CO 80211

Dan Coloccia
Project Number: [none]
Project: Custy #1

MW-07R

3/1/2019 2:45:00PM

Analyte	Result	Limit	Units	Dilution	Batch	Analyst	Prepared	Analyzed	Notes
---------	--------	-------	-------	----------	-------	---------	----------	----------	-------

Origins Laboratory, Inc. Y903031-06 (Water)

BTEX by EPA 8260C

Benzene	ND	1.00	ug/L	1	B9C0407	JTD	03/04/2019	03/04/2019	U
Toluene	ND	1.00	"	"	"	JTD	"	"	U
Ethylbenzene	ND	1.00	"	"	"	JTD	"	"	U
Xylenes, total	ND	1.00	"	"	"	JTD	"	"	U

Surrogate: 1,2-Dichloroethane-d4	112 %	84-121	"	"	"
Surrogate: Toluene-d8	98.7 %	85-115	"	"	"
Surrogate: 4-Bromofluorobenzene	99.8 %	84-114	"	"	"

Origins Laboratory, Inc.



The results in this report apply to the samples analyzed in accordance with the chain of custody document. This analytical report must be reproduced in its entirety.

Eagle Environmental Consulting, Inc.
4101 Inca Street
Denver CO 80211

Dan Coloccia
Project Number: [none]
Project: Custy #1

MW-08

3/1/2019 2:20:00PM

Analyte	Result	Reporting Limit	Units	Dilution	Batch	Analyst	Prepared	Analyzed	Notes
---------	--------	-----------------	-------	----------	-------	---------	----------	----------	-------

Origins Laboratory, Inc. Y903031-07 (Water)

BTEX by EPA 8260C

Benzene	ND	1.00	ug/L	1	B9C0407	JTD	03/04/2019	03/04/2019	U
Toluene	ND	1.00	"	"	"	JTD	"	"	U
Ethylbenzene	ND	1.00	"	"	"	JTD	"	"	U
Xylenes, total	ND	1.00	"	"	"	JTD	"	"	U

Surrogate: 1,2-Dichloroethane-d4	111 %	84-121			"	"	"
Surrogate: Toluene-d8	100 %	85-115			"	"	"
Surrogate: 4-Bromofluorobenzene	101 %	84-114			"	"	"

Origins Laboratory, Inc.



The results in this report apply to the samples analyzed in accordance with the chain of custody document. This analytical report must be reproduced in its entirety.

Eagle Environmental Consulting, Inc.
4101 Inca Street
Denver CO 80211

Dan Coloccia
Project Number: [none]
Project: Custy #1

MW-09

3/1/2019 12:50:00PM

Analyte	Result	Reporting Limit	Units	Dilution	Batch	Analyst	Prepared	Analyzed	Notes
---------	--------	-----------------	-------	----------	-------	---------	----------	----------	-------

Origins Laboratory, Inc. Y903031-08 (Water)

BTEX by EPA 8260C

Benzene	ND	1.00	ug/L	1	B9C0407	JTD	03/04/2019	03/04/2019	U
Toluene	ND	1.00	"	"	"	JTD	"	"	U
Ethylbenzene	ND	1.00	"	"	"	JTD	"	"	U
Xylenes, total	ND	1.00	"	"	"	JTD	"	"	U

Surrogate: 1,2-Dichloroethane-d4	118 %	84-121	"	"	"
Surrogate: Toluene-d8	97.3 %	85-115	"	"	"
Surrogate: 4-Bromofluorobenzene	100 %	84-114	"	"	"

Origins Laboratory, Inc.



The results in this report apply to the samples analyzed in accordance with the chain of custody document. This analytical report must be reproduced in its entirety.

Eagle Environmental Consulting, Inc.
4101 Inca Street
Denver CO 80211

Dan Coloccia
Project Number: [none]
Project: Custy #1

MW-13R

3/1/2019 2:10:00PM

Analyte	Result	Limit	Units	Dilution	Batch	Analyst	Prepared	Analyzed	Notes
---------	--------	-------	-------	----------	-------	---------	----------	----------	-------

Origins Laboratory, Inc. Y903031-09 (Water)

BTEX by EPA 8260C

Benzene	ND	1.00	ug/L	1	B9C0407	JTD	03/04/2019	03/04/2019	U
Toluene	ND	1.00	"	"	"	JTD	"	"	U
Ethylbenzene	ND	1.00	"	"	"	JTD	"	"	U
Xylenes, total	ND	1.00	"	"	"	JTD	"	"	U

Surrogate: 1,2-Dichloroethane-d4	104 %	84-121	"	"	"
Surrogate: Toluene-d8	102 %	85-115	"	"	"
Surrogate: 4-Bromofluorobenzene	101 %	84-114	"	"	"

Origins Laboratory, Inc.



The results in this report apply to the samples analyzed in accordance with the chain of custody document. This analytical report must be reproduced in its entirety.

Eagle Environmental Consulting, Inc.
4101 Inca Street
Denver CO 80211

Dan Coloccia
Project Number: [none]
Project: Custy #1

MW-14

3/1/2019 1:05:00PM

Analyte	Result	Reporting Limit	Units	Dilution	Batch	Analyst	Prepared	Analyzed	Notes
---------	--------	-----------------	-------	----------	-------	---------	----------	----------	-------

Origins Laboratory, Inc.
Y903031-10 (Water)

BTEX by EPA 8260C

Benzene	ND	1.00	ug/L	1	B9C0407	JTD	03/04/2019	03/04/2019	U
Toluene	ND	1.00	"	"	"	JTD	"	"	U
Ethylbenzene	ND	1.00	"	"	"	JTD	"	"	U
Xylenes, total	ND	1.00	"	"	"	JTD	"	"	U

Surrogate: 1,2-Dichloroethane-d4	111 %	84-121	"	"	"
Surrogate: Toluene-d8	99.3 %	85-115	"	"	"
Surrogate: 4-Bromofluorobenzene	101 %	84-114	"	"	"

Origins Laboratory, Inc.



The results in this report apply to the samples analyzed in accordance with the chain of custody document. This analytical report must be reproduced in its entirety.

Eagle Environmental Consulting, Inc.

4101 Inca Street

Denver CO 80211

Dan Coloccia

Project Number: [none]

Project: Custy #1

Volatile Organic Compounds by GC/MS SW846 8260C - Quality Control
Origins Laboratory, Inc.

Analyte	Result	Reporting Limit	Units	Spike Level	Source Result	%REC	%REC Limits	RPD	RPD Limit	Notes
---------	--------	-----------------	-------	-------------	---------------	------	-------------	-----	-----------	-------

Batch B9C0407 - EPA 5030B (Water)

Blank (B9C0407-BLK1)

Prepared: 03/04/2019 Analyzed: 03/04/2019

Benzene	ND	1.00	ug/L							U
Toluene	ND	1.00	"							U
Ethylbenzene	ND	1.00	"							U
Xylenes, total	ND	1.00	"							U
Surrogate: 1,2-Dichloroethane-d4	57		"	62.5	91.1		84-121			
Surrogate: Toluene-d8	66		"	62.5	105		85-115			
Surrogate: 4-Bromofluorobenzene	64		"	62.5	103		84-114			

Origins Laboratory, Inc.



The results in this report apply to the samples analyzed in accordance with the chain of custody document. This analytical report must be reproduced in its entirety.

Eagle Environmental Consulting, Inc.

4101 Inca Street

Denver CO 80211

Dan Coloccia

Project Number: [none]

Project: Custy #1

Volatile Organic Compounds by GC/MS SW846 8260C - Quality Control
Origins Laboratory, Inc.

Analyte	Result	Reporting Limit	Units	Spike Level	Source Result	%REC	%REC Limits	RPD	RPD Limit	Notes
---------	--------	-----------------	-------	-------------	---------------	------	-------------	-----	-----------	-------

Batch B9C0407 - EPA 5030B (Water)

LCS (B9C0407-BS1)

Prepared: 03/04/2019 Analyzed: 03/04/2019

Benzene	52.0	1.00	ug/L	50.0		104	73.3-129			
Toluene	49.3	1.00	"	50.0		98.6	76.2-123			
Ethylbenzene	44.3	1.00	"	50.0		88.7	73.6-130			
m,p-Xylene	89.9	2.00	"	100		89.9	76.1-126			
o-Xylene	46.9	1.00	"	50.0		93.9	76.6-124			
Surrogate: 1,2-Dichloroethane-d4	71		"	62.5		114	84-121			
Surrogate: Toluene-d8	60		"	62.5		96.3	85-115			
Surrogate: 4-Bromofluorobenzene	60		"	62.5		95.8	84-114			

Origins Laboratory, Inc.



The results in this report apply to the samples analyzed in accordance with the chain of custody document. This analytical report must be reproduced in its entirety.

Jen Pellegrini For Noelle Doyle Mathis, President

Eagle Environmental Consulting, Inc.
4101 Inca Street
Denver CO 80211

Dan Coloccia
Project Number: [none]
Project: Custy #1

Volatile Organic Compounds by GC/MS SW846 8260C - Quality Control
Origins Laboratory, Inc.

Analyte	Result	Reporting Limit	Units	Spike Level	Source Result	%REC	%REC Limits	RPD	RPD Limit	Notes
---------	--------	-----------------	-------	-------------	---------------	------	-------------	-----	-----------	-------

Batch B9C0407 - EPA 5030B (Water)

Matrix Spike (B9C0407-MS1)		Source: Y903001-01			Prepared: 03/04/2019 Analyzed: 03/04/2019					
Benzene	53.6	1.00	ug/L	50.0	ND	107	74-130			
Toluene	53.8	1.00	"	50.0	0.150	107	73-131			
Ethylbenzene	54.3	1.00	"	50.0	0.380	108	76-132			
m,p-Xylene	109	2.00	"	100	0.910	108	69-139			
o-Xylene	53.8	1.00	"	50.0	0.470	107	74-131			
Surrogate: 1,2-Dichloroethane-d4	56		"	62.5		90.0	84-121			
Surrogate: Toluene-d8	64		"	62.5		103	85-115			
Surrogate: 4-Bromofluorobenzene	61		"	62.5		98.0	84-114			

Origins Laboratory, Inc.



The results in this report apply to the samples analyzed in accordance with the chain of custody document. This analytical report must be reproduced in its entirety.

Eagle Environmental Consulting, Inc.
4101 Inca Street
Denver CO 80211

Dan Coloccia
Project Number: [none]
Project: Custy #1

Volatile Organic Compounds by GC/MS SW846 8260C - Quality Control
Origins Laboratory, Inc.

Analyte	Result	Reporting Limit	Units	Spike Level	Source Result	%REC	%REC Limits	RPD	RPD Limit	Notes
---------	--------	-----------------	-------	-------------	---------------	------	-------------	-----	-----------	-------

Batch B9C0407 - EPA 5030B (Water)

Matrix Spike Dup (B9C0407-MSD1)		Source: Y903001-01			Prepared: 03/04/2019 Analyzed: 03/04/2019					
Benzene	53.8	1.00	ug/L	50.0	ND	108	74-130	0.372	20	
Toluene	53.1	1.00	"	50.0	0.150	106	73-131	1.40	20	
Ethylbenzene	51.8	1.00	"	50.0	0.380	103	76-132	4.81	20	
m,p-Xylene	104	2.00	"	100	0.910	103	69-139	4.67	20	
o-Xylene	52.2	1.00	"	50.0	0.470	103	74-131	3.00	20	
Surrogate: 1,2-Dichloroethane-d4	61		"	62.5		96.9	84-121			
Surrogate: Toluene-d8	62		"	62.5		99.7	85-115			
Surrogate: 4-Bromofluorobenzene	61		"	62.5		97.5	84-114			

Origins Laboratory, Inc.



The results in this report apply to the samples analyzed in accordance with the chain of custody document. This analytical report must be reproduced in its entirety.

Eagle Environmental Consulting, Inc.

4101 Inca Street

Denver CO 80211

Dan Coloccia

Project Number: [none]

Project: Custy #1

Notes and Definitions

U Sample is Non-Detect.

S-07 High surrogate in sample, however sample is non-detect. High surrogate indicates result values are biased high.

ND Analyte NOT DETECTED at or above the reporting limit

RPD Relative Percent Difference

All soil results are reported at a wet weight basis.

Origins Laboratory, Inc.



The results in this report apply to the samples analyzed in accordance with the chain of custody document. This analytical report must be reproduced in its entirety.



March 13, 2019

Eagle Environmental Consulting, Inc.

Dan Coloccia

4101 Inca Street

Denver

CO 80211

Project Name - Carrizo Custy #1

Project Number - [none]

Attached are your analytical results for Carrizo Custy #1 received by Origins Laboratory, Inc. March 08, 2019. This project is associated with Origins project number Y903102-01.

The analytical results in the following report were analyzed under the guidelines of EPA Methods. These methods are identified as follows; "SW" are defined in SW-846, "EPA" are defined in 40CFR part 136 and "SM" are defined in the most current revision of Standard Methods For the Examination of Water and Wastewater.

The analytical results apply specifically to the samples and analyses specified per the attached Chain of Custody. As such, this report shall not be reproduced except in full, without the written approval of Origin's laboratory.

Unless otherwise noted, the analytical results for all soil samples are reported on a wet weight basis. All analytical analyses were performed under NELAP guidelines unless noted by a data qualifier.

Any holding time exceedances, deviations from the method specifications or deviations from Origins Laboratory's Standard Operating Procedures are outlined in the case narrative.

Thank you for selecting Origins for your analytical needs. Please contact us with any questions concerning this report, or if we can help with anything at all.

Origins Laboratory, Inc.
303.433.1322
o-squad@oelabinc.com



1725 Elk Place, Denver, CO 80211 | Phone: 303.433.1322 | Fax: 303.265.9645

Eagle Environmental Consulting, Inc.

4101 Inca Street

Denver CO 80211

Dan Coloccia

Project Number: [none]

Project: Carrizo Custy #1

CROSS REFERENCE REPORT

Sample ID	Laboratory ID	Matrix	Date Sampled	Date Received
MW-06R	Y903102-01	Water	March 8, 2019 10:30	03/08/2019 13:05

Origins Laboratory, Inc.



The results in this report apply to the samples analyzed in accordance with the chain of custody document. This analytical report must be reproduced in its entirety.

Jen Pellegrini For Noelle Doyle Mathis, President

Eagle Environmental Consulting, Inc.
4101 Inca Street
Denver CO 80211

Dan Coloccia
Project Number: [none]
Project: Carrizo Custy #1

ORIGINS
LABORATORY, INC

www.originslaboratory.com

1903102

page 1 of 1

Client: Eagle
Address: 4101 Inca Street
Denver CO 80211
Telephone Number: 303.433.0474
Email Address: dcoloccia@eagle-environment.com

Project Manager: Daniel Coloccia
Project Name: Carrizo Custy #1
Project Number: -
Samples Collected By: JG

Sample ID Description	Date Sampled	Time Sampled	# of Containers	Preservative				Matrix			Analysis		Sample Instructions
				Unpreserved	HCl	HNO ₃	Other	Groundwater	Soil	Air Summa	Other		
MW-06.R	3-8-2019	1030	1	X				X					1
													2
													3
													4
													5
													6
													7
													8
													9
													10

Relinquished By: John Smith Date: 3-8-2019 Time: 1305
Relinquished By: _____ Date: _____ Time: _____

Received By: _____ Date: 3-8-19 Time: 1305
Received By: _____ Date: _____ Time: _____

Turnaround Time: Same Day ☐ 24 Hr ☐ 48 Hr ☐ 72 Hr ☒ Standard

Date Results Needed

Temp Received: 5.2

Origins Laboratory, Inc.

Jefe Pellegrini

The results in this report apply to the samples analyzed in accordance with the chain of custody document. This analytical report must be reproduced in its entirety.

Eagle Environmental Consulting, Inc.
4101 Inca Street
Denver CO 80211

Dan Coloccia
Project Number: [none]
Project: Carrizo Custy #1

Origins Laboratory

F-012207-01-R1
Effective Date: 01/09/12

Sample Receipt Checklist

Origins Work Order: Y903102

Client: Eagle

Client Project ID: Carrizo Custy #1

Checklist Completed by: JP

Shipped Via: HD

(UPS, FedEx, Hand Delivered, Pick-up, etc.)

Date/time completed: 03/08/19

Airbill #: N/A

Matrix(s) Received: (Check all that apply): ☒ Soil/Solid ☒ Water ☐ Other: _____

Cooler Number/Temperature: 1 5.2 °C 1 °C 1 °C 1 °C (Describe)

Thermometer ID: T003

Requirement Description	Yes	No	N/A	Comments (if any)
If samples require cooling, was the temperature between 0°C to ≤ 6°C ⁽¹⁾ ?	<input checked="" type="checkbox"/>	<input type="checkbox"/>	<input type="checkbox"/>	
Is there ice present (document if blue ice is used)	<input checked="" type="checkbox"/>	<input type="checkbox"/>	<input type="checkbox"/>	
Are custody seals present on cooler? (if so, document in comments if they are signed and dated, broken or intact)	<input type="checkbox"/>	<input checked="" type="checkbox"/>	<input type="checkbox"/>	
Are custody seals present on each sample container? (if so, document in comments if they are signed and dated, broken or intact)	<input type="checkbox"/>	<input checked="" type="checkbox"/>	<input type="checkbox"/>	
Were all samples received intact ⁽¹⁾ ?	<input checked="" type="checkbox"/>	<input type="checkbox"/>	<input type="checkbox"/>	
Was adequate sample volume provided ⁽¹⁾ ?	<input checked="" type="checkbox"/>	<input type="checkbox"/>	<input type="checkbox"/>	
Are short holding time analytes or samples with HTs due within 48 hours present ⁽¹⁾ ?	<input type="checkbox"/>	<input checked="" type="checkbox"/>	<input type="checkbox"/>	
Is a chain-of-custody (COC) present and filled out completely ⁽¹⁾ ?	<input checked="" type="checkbox"/>	<input type="checkbox"/>	<input type="checkbox"/>	
Does the COC agree with the number and type of sample bottles received ⁽¹⁾ ?	<input checked="" type="checkbox"/>	<input type="checkbox"/>	<input type="checkbox"/>	
Do the sample IDs on the bottle labels match the COC ⁽¹⁾ ?	<input checked="" type="checkbox"/>	<input type="checkbox"/>	<input type="checkbox"/>	
Is the COC properly relinquished by the client with date and time recorded ⁽¹⁾ ?	<input checked="" type="checkbox"/>	<input type="checkbox"/>	<input type="checkbox"/>	
For volatiles in water – is there headspace (> ¼ inch bubble) present? If yes, contact client and note in narrative.	<input type="checkbox"/>	<input checked="" type="checkbox"/>	<input type="checkbox"/>	
Are samples preserved that require preservation and was it checked ⁽¹⁾ ? (note ID of confirmation instrument used in comments) / (preservation is not confirmed for subcontracted analyses in order to insure sample integrity)/(pH <2 for samples preserved with HNO ₃ , HCL, H ₂ SO ₄) / (pH >10 for samples preserved with NaAsO ₂ +NaOH, ZnAc+NaOH)	<input type="checkbox"/>	<input checked="" type="checkbox"/>	<input type="checkbox"/>	
Additional Comments (if any):				

⁽¹⁾If NO, then contact the client before proceeding with analysis and note date/time and person contacted as well as the corrective action to in the additional comments (above) and the case narrative.

Reviewed by (Project Manager) JP

Date/Time Reviewed 3/13/19

Origins Laboratory, Inc.

Jefe Pellegrini

The results in this report apply to the samples analyzed in accordance with the chain of custody document. This analytical report must be reproduced in its entirety.

Eagle Environmental Consulting, Inc.
4101 Inca Street
Denver CO 80211

Dan Coloccia
Project Number: [none]
Project: Carrizo Custy #1

MW-06R

3/8/2019 10:30:00AM

Analyte	Result	Limit	Units	Dilution	Batch	Analyst	Prepared	Analyzed	Notes
---------	--------	-------	-------	----------	-------	---------	----------	----------	-------

Origins Laboratory, Inc. Y903102-01 (Water)

BTEX by EPA 8260C

Benzene	ND	4.00	ug/L	4	B9C1103	JTD	03/11/2019	03/11/2019	U
Toluene	ND	4.00	"	"	"	JTD	"	"	U
Ethylbenzene	ND	4.00	"	"	"	JTD	"	"	U
Xylenes, total	ND	4.00	"	"	"	JTD	"	"	U

Surrogate: 1,2-Dichloroethane-d4	110 %	84-121	"	"	"
Surrogate: Toluene-d8	97.7 %	85-115	"	"	"
Surrogate: 4-Bromofluorobenzene	104 %	84-114	"	"	"

Origins Laboratory, Inc.



The results in this report apply to the samples analyzed in accordance with the chain of custody document. This analytical report must be reproduced in its entirety.

Eagle Environmental Consulting, Inc.

4101 Inca Street

Denver CO 80211

Dan Coloccia

Project Number: [none]

Project: Carrizo Custy #1

Volatile Organic Compounds by GC/MS SW846 8260C - Quality Control
Origins Laboratory, Inc.

Analyte	Result	Reporting Limit	Units	Spike Level	Source Result	%REC	%REC Limits	RPD	RPD Limit	Notes
---------	--------	-----------------	-------	-------------	---------------	------	-------------	-----	-----------	-------

Batch B9C1103 - EPA 5030B (Water)

Blank (B9C1103-BLK1)

Prepared: 03/11/2019 Analyzed: 03/11/2019

Benzene	ND	1.00	ug/L							U
Toluene	ND	1.00	"							U
Ethylbenzene	ND	1.00	"							U
Xylenes, total	ND	1.00	"							U
Surrogate: 1,2-Dichloroethane-d4	63		"	62.5	100		84-121			
Surrogate: Toluene-d8	63		"	62.5	100		85-115			
Surrogate: 4-Bromofluorobenzene	64		"	62.5	102		84-114			

Origins Laboratory, Inc.



The results in this report apply to the samples analyzed in accordance with the chain of custody document. This analytical report must be reproduced in its entirety.

Jen Pellegrini For Noelle Doyle Mathis, President

Eagle Environmental Consulting, Inc.

4101 Inca Street

Denver CO 80211

Dan Coloccia

Project Number: [none]

Project: Carrizo Custy #1

Volatile Organic Compounds by GC/MS SW846 8260C - Quality Control
Origins Laboratory, Inc.

Analyte	Result	Reporting Limit	Units	Spike Level	Source Result	%REC	%REC Limits	RPD	RPD Limit	Notes
---------	--------	-----------------	-------	-------------	---------------	------	-------------	-----	-----------	-------

Batch B9C1103 - EPA 5030B (Water)

LCS (B9C1103-BS1)

Prepared: 03/11/2019 Analyzed: 03/11/2019

Benzene	47.2	1.00	ug/L	50.0		94.3	73.3-129
Toluene	45.1	1.00	"	50.0		90.3	76.2-123
Ethylbenzene	40.7	1.00	"	50.0		81.3	73.6-130
m,p-Xylene	83.2	2.00	"	100		83.2	76.1-126
o-Xylene	42.9	1.00	"	50.0		85.9	76.6-124
Surrogate: 1,2-Dichloroethane-d4	72		"	62.5		115	84-121
Surrogate: Toluene-d8	60		"	62.5		96.2	85-115
Surrogate: 4-Bromofluorobenzene	60		"	62.5		96.5	84-114

Origins Laboratory, Inc.



The results in this report apply to the samples analyzed in accordance with the chain of custody document. This analytical report must be reproduced in its entirety.

Eagle Environmental Consulting, Inc.

4101 Inca Street

Denver CO 80211

Dan Coloccia

Project Number: [none]

Project: Carrizo Custy #1

Volatile Organic Compounds by GC/MS SW846 8260C - Quality Control
Origins Laboratory, Inc.

Analyte	Result	Reporting Limit	Units	Spike Level	Source Result	%REC	%REC Limits	RPD	RPD Limit	Notes
---------	--------	-----------------	-------	-------------	---------------	------	-------------	-----	-----------	-------

Batch B9C1103 - EPA 5030B (Water)

Matrix Spike (B9C1103-MS1)		Source: Y903097-01			Prepared: 03/11/2019 Analyzed: 03/11/2019					
Benzene	52.1	1.00	ug/L	50.0	ND	104	74-130			
Toluene	49.8	1.00	"	50.0	ND	99.6	73-131			
Ethylbenzene	49.2	1.00	"	50.0	ND	98.3	76-132			
m,p-Xylene	98.8	2.00	"	100	ND	98.8	69-139			
o-Xylene	50.1	1.00	"	50.0	ND	100	74-131			
Surrogate: 1,2-Dichloroethane-d4	60		"	62.5		96.8	84-121			
Surrogate: Toluene-d8	62		"	62.5		99.7	85-115			
Surrogate: 4-Bromofluorobenzene	62		"	62.5		98.8	84-114			

Origins Laboratory, Inc.



The results in this report apply to the samples analyzed in accordance with the chain of custody document. This analytical report must be reproduced in its entirety.

Eagle Environmental Consulting, Inc.

4101 Inca Street

Denver CO 80211

Dan Coloccia

Project Number: [none]

Project: Carrizo Custy #1

Volatile Organic Compounds by GC/MS SW846 8260C - Quality Control
Origins Laboratory, Inc.

Analyte	Result	Reporting Limit	Units	Spike Level	Source Result	%REC	%REC Limits	RPD	RPD Limit	Notes
---------	--------	-----------------	-------	-------------	---------------	------	-------------	-----	-----------	-------

Batch B9C1103 - EPA 5030B (Water)

Matrix Spike Dup (B9C1103-MSD1)		Source: Y903097-01			Prepared: 03/11/2019 Analyzed: 03/11/2019					
Benzene	55.3	1.00	ug/L	50.0	ND	111	74-130	6.02	20	
Toluene	52.6	1.00	"	50.0	ND	105	73-131	5.39	20	
Ethylbenzene	51.3	1.00	"	50.0	ND	103	76-132	4.32	20	
m,p-Xylene	104	2.00	"	100	ND	104	69-139	5.34	20	
o-Xylene	52.4	1.00	"	50.0	ND	105	74-131	4.59	20	
Surrogate: 1,2-Dichloroethane-d4	61		"	62.5		98.0	84-121			
Surrogate: Toluene-d8	62		"	62.5		98.8	85-115			
Surrogate: 4-Bromofluorobenzene	62		"	62.5		98.6	84-114			

Origins Laboratory, Inc.



The results in this report apply to the samples analyzed in accordance with the chain of custody document. This analytical report must be reproduced in its entirety.

Eagle Environmental Consulting, Inc.

4101 Inca Street

Denver CO 80211

Dan Coloccia

Project Number: [none]

Project: Carrizo Custy #1

Notes and Definitions

U Sample is Non-Detect.

ND Analyte NOT DETECTED at or above the reporting limit

RPD Relative Percent Difference

All soil results are reported at a wet weight basis.

Origins Laboratory, Inc.



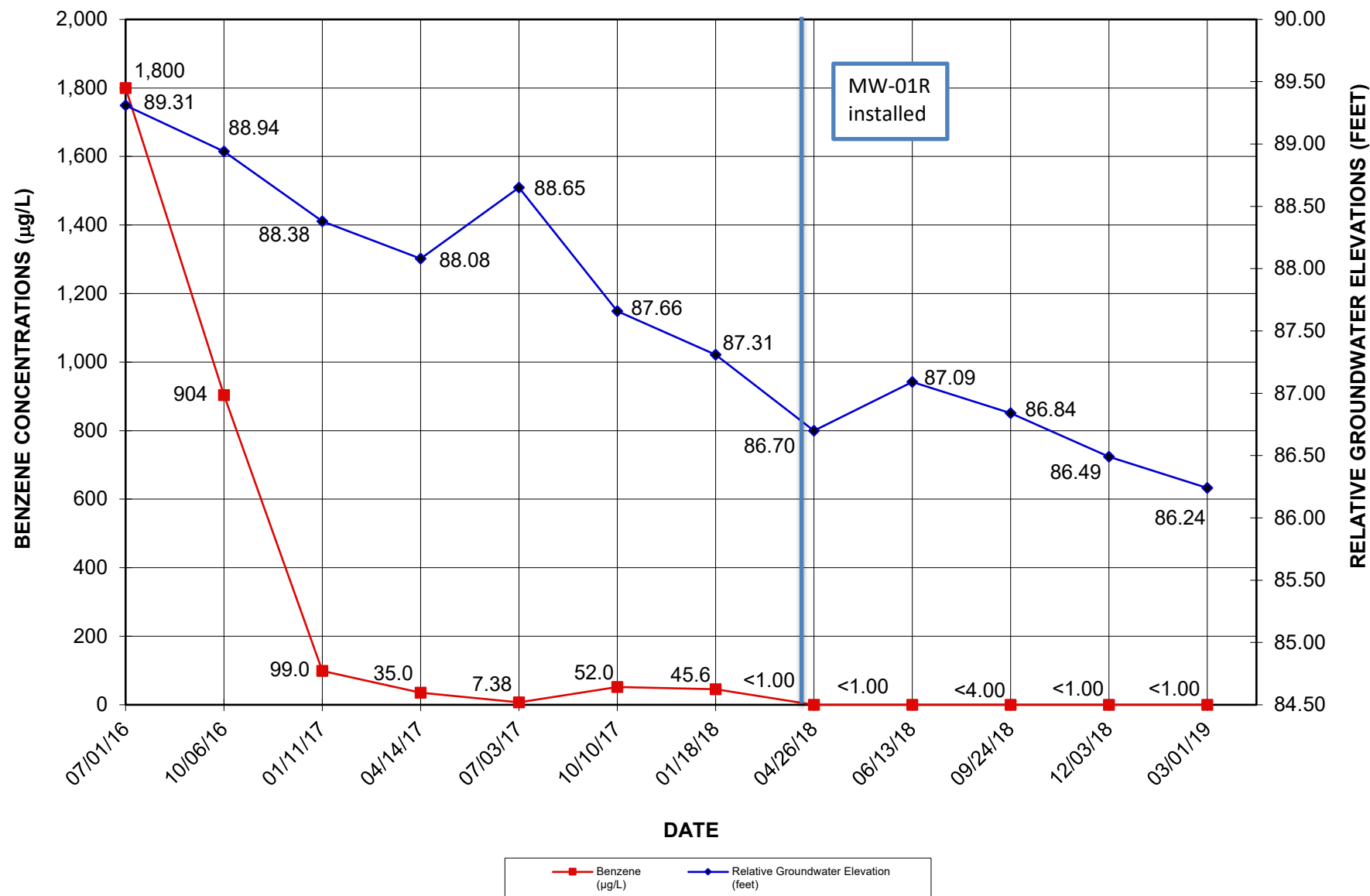
The results in this report apply to the samples analyzed in accordance with the chain of custody document. This analytical report must be reproduced in its entirety.

Jen Pellegrini For Noelle Doyle Mathis, President

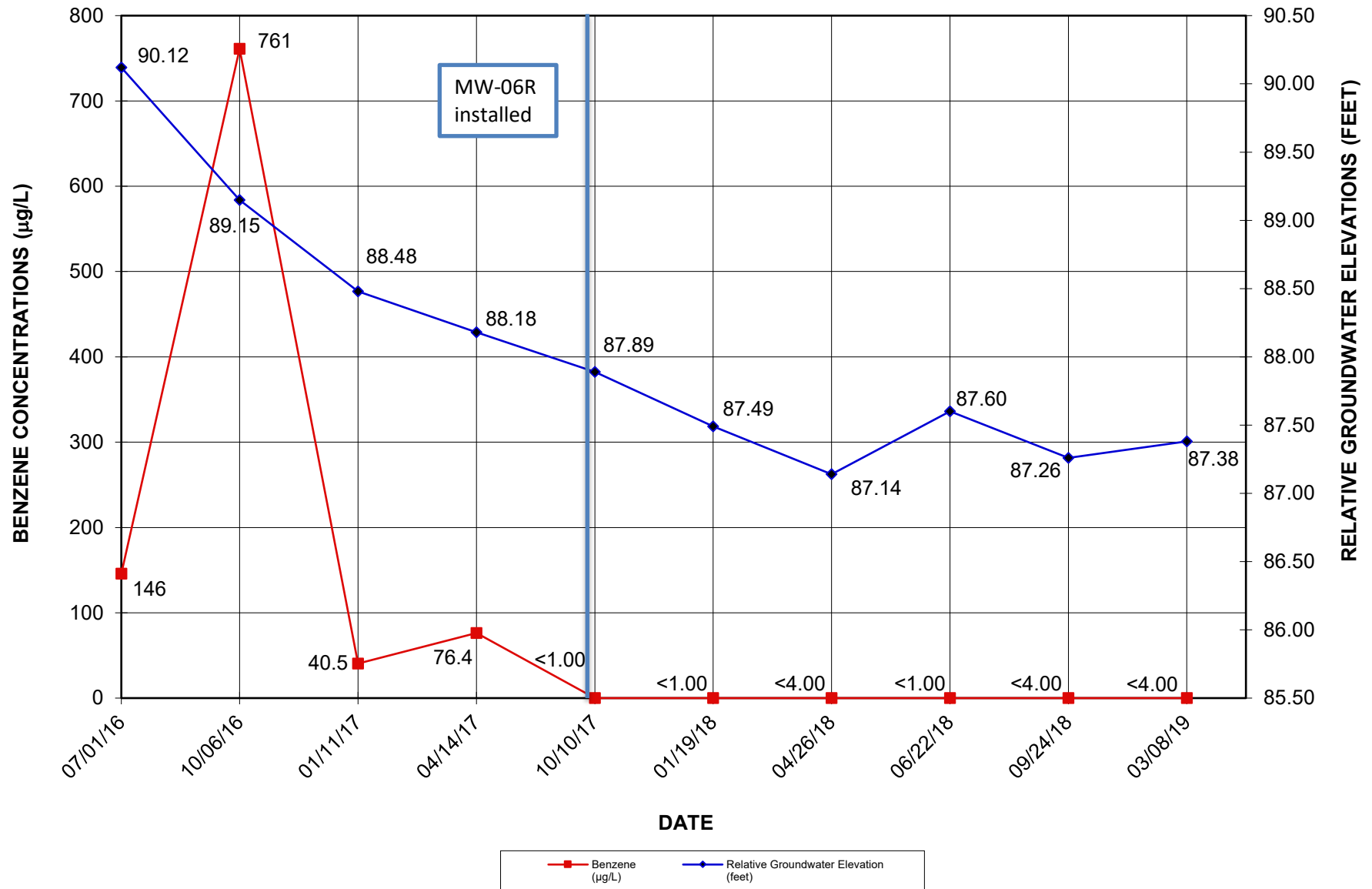
ATTACHMENT B

Hydrographs

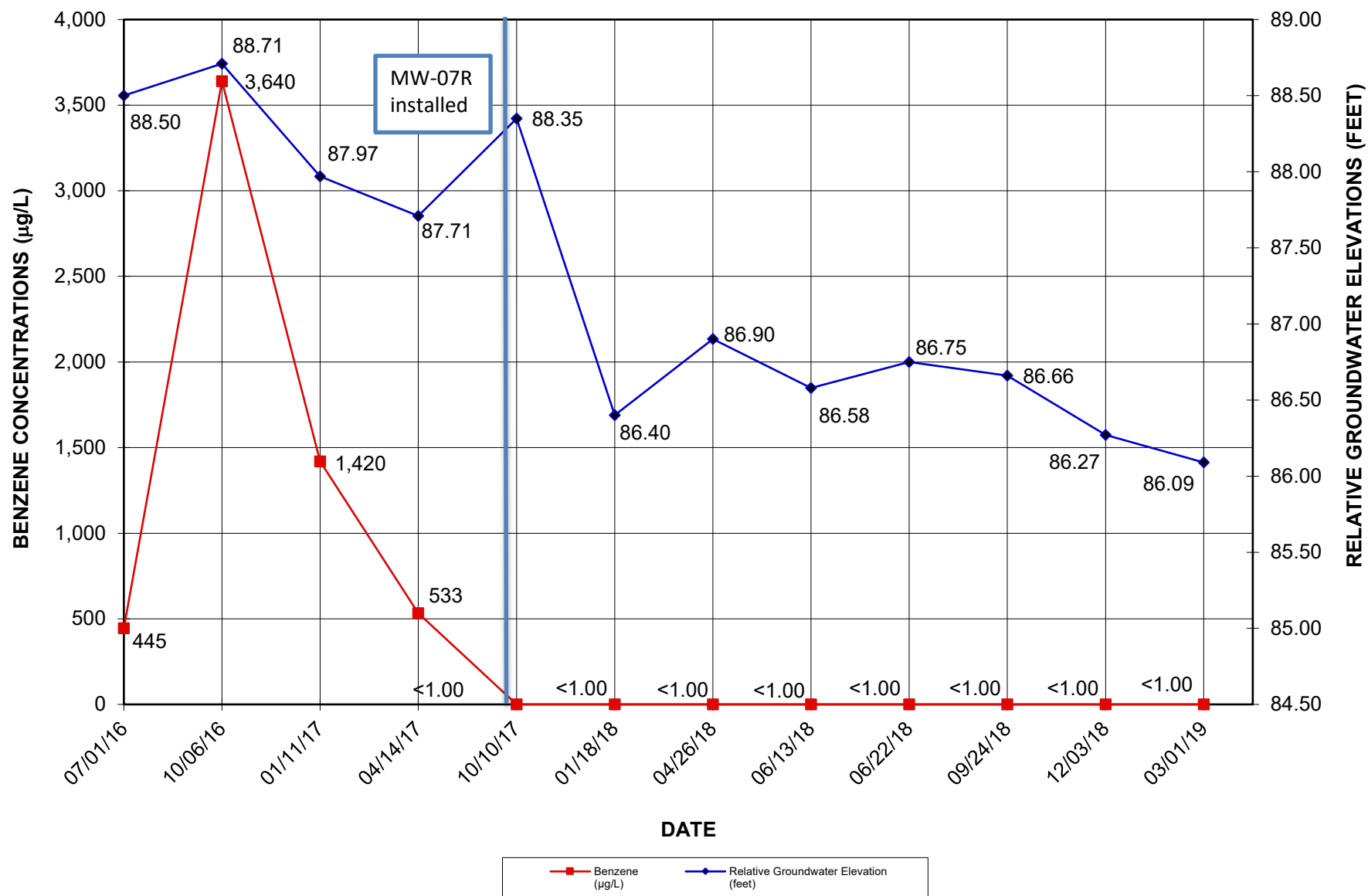
**DISSOLVED BENZENE IN GROUNDWATER ($\mu\text{g/L}$) VS.
RELATIVE GROUNDWATER ELEVATIONS (FT.) OVER TIME
MW-01/MW-01R**



**DISSOLVED BENZENE IN GROUNDWATER ($\mu\text{g/L}$) VS.
RELATIVE GROUNDWATER ELEVATIONS (FT.) OVER TIME
MW-06/MW-06R**



**DISSOLVED BENZENE IN GROUNDWATER ($\mu\text{g/L}$) VS.
RELATIVE GROUNDWATER ELEVATIONS (FT.) OVER TIME
MW-07/MW-07R**



**DISSOLVED BENZENE IN GROUNDWATER ($\mu\text{g/L}$) VS.
RELATIVE GROUNDWATER ELEVATIONS (FT.) OVER TIME
MW-13/MW-13R**

