



410 17th Street, Suite 1400  
Denver, CO 80202  
(720) 440-6100 phone  
(720) 305-0804 fax

[Bonanzacrk.com](http://Bonanzacrk.com)

February 12, 2019

State of Colorado  
Oil and Gas Conservation Commission  
1120 Lincoln Street, Suite 801  
Denver, CO 80203

**RE: Proposed Wellbore Spacing Unit**  
State Antelope Y-E-13HNB  
Niobrara New Drill  
NESE Section 13, Township 5N, Range 62W, 6<sup>th</sup> PM  
Weld County, Colorado

Dear Director Robbins,

Bonanza Creek Energy Operating Company, LLC. ("Bonanza Creek") is planning to drill the above captioned well in accordance with the provisions of Colorado Oil and Gas Conservation Commission (COGCC) Rule 318A.e.

Bonanza Creek's proposed wellbore spacing unit consists of:

Township 5N, Range 62W (Weld County):

5N-62W-13: S2S2  
5N-62W-14: SESE  
5N-62W-23: NENE  
5N-62W-24: N2N2  
5N-61W-18: SWSW  
5N-61W-19: NWNW

Total acres: 480

The 30 day notification time period has passed and we have not yet received any objections to such well locations or proposed spacing unit, therefore Bonanza Creek hereby requests the Director to approve the above mentioned well. Bonanza Creek respectfully requests the COGCC review the enclosed map illustrating the proposed wellbore spacing unit.

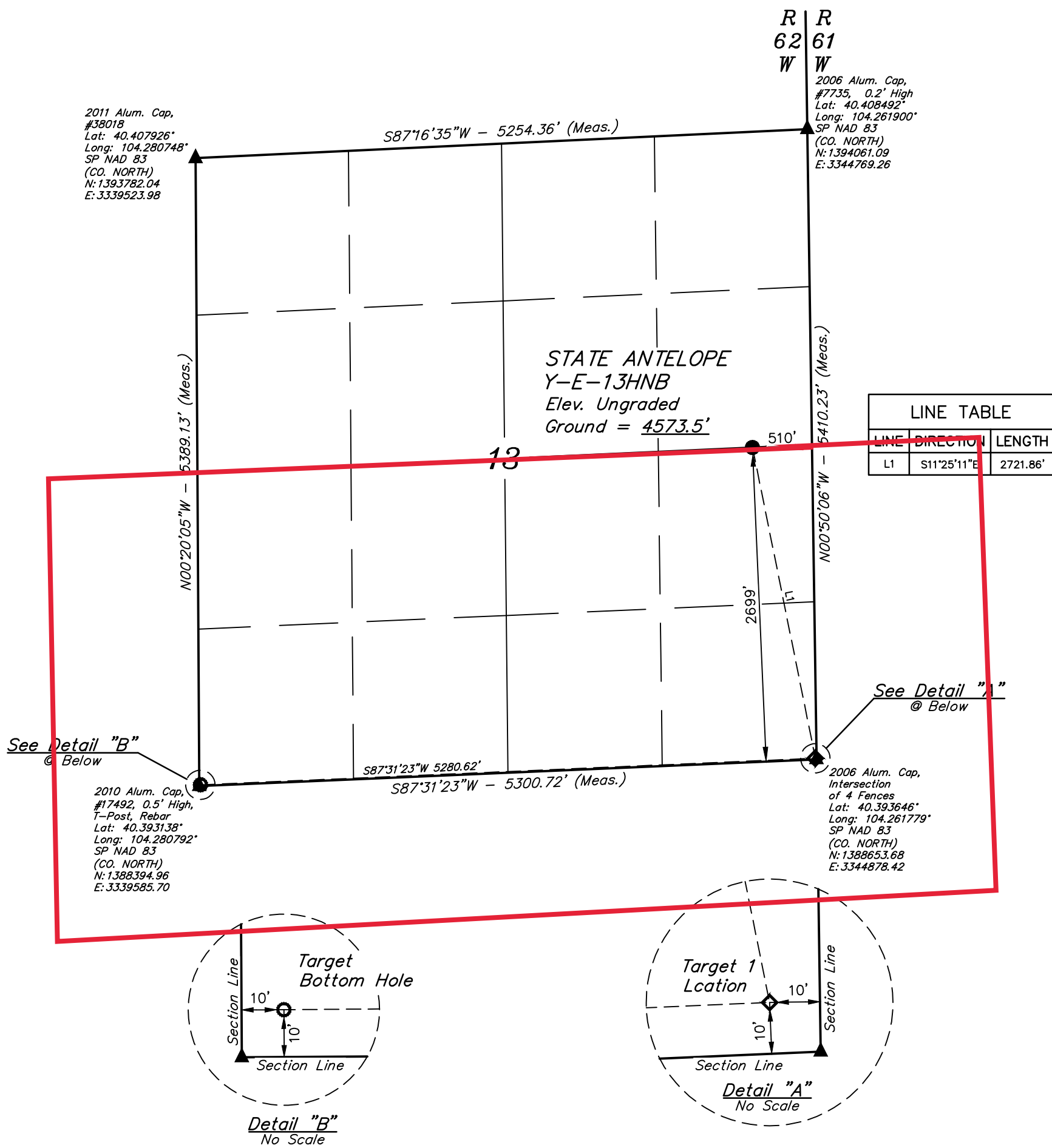
Regards,  
Bonanza Creek Energy Operating Company, LLC.

Brian Dodek, P.G.  
Manager – Environmental & Regulatory Compliance

*T5N, R62W, 6th P.M.*

- = PROPOSED WELLHEAD.  
 ◆ = TARGET 1 LOCATION.  
 ○ = TARGET BOTTOM HOLE.  
 ▲ = SECTION CORNERS  
 LOCATED. (NAD 83)

- Distances referenced on plat to section lines are perpendicular.



<b>NAD 83 (SURFACE LOCATION)</b>
LATITUDE = 40°24'03.62" (40.401006°)
LONGITUDE = 104°15'49.21" (104.263670°)
<b>STATE PLANE NAD 83 (CO. NORTH)</b>
N: 1391327.26' E: 3344314.53'

<b>NAD 83 (TARGET 1 LOCATION)</b>	<b>NAD 83 (TARGET BOTTOM HOLE)</b>
LATITUDE = 40°23'37.22" (40.393673°)	LATITUDE = 40°23'35.40" (40.393166°)
LONGITUDE = 104°15'42.54" (104.261815°)	LONGITUDE = 104°16'50.72" (104.280756°)
<b>STATE PLANE NAD 83 (CO. NORTH)</b>	<b>STATE PLANE NAD 83 (CO. NORTH)</b>
N: 1388663.20' E: 3344868.23'	N: 1388405.45' E: 3339595.58'

**PDOP = 1.6**



**CERTIFICATE**

THIS IS TO CERTIFY THAT THE ABOVE MAP WAS PREPARED FROM FIELD NOTES OF ACTUAL SURVEYS MADE BY ME OR UNDER MY SUPERVISION, AND THAT THE SAME ARE TRUE AND CORRECT TO THE BEST OF MY KNOWLEDGE AND BELIEF.

*[Signature]*

**GRADO REGISTERED**

REGISTERED LAND SURVEYOR  
REGISTRATION NO. 28285  
STATE OF COLORADO  
11-09-18

**BASIS OF BEARINGS**  
TRANSVERSE MERCATOR PROJECTION WITH  
A CENTRAL MERIDIAN OF W105°00'00".

**BASIS OF ELEVATION**  
OPUS SOLUTION GENERATED NAVD 88



**UELS, LLC**  
Corporate Office \* 85 South 200 East  
Vernal, UT 84078 \* (435) 789-1017



**BONANZA CREEK ENERGY  
OPERATING COMPANY, LLC**

**STATE ANTELOPE Y-E-13HNB**  
**NE 1/4 SE 1/4, SECTION 13, T5N, R62W, 6th P.M.**  
**WELD COUNTY, COLORADO**

<b>SURVEYED BY</b>	JARED CHRISTOPHER, M.M.	09-14-18	<b>SCALE</b>
<b>DRAWN BY</b>	C.IVIE	11-09-18	1" = 1000'

## WELL LOCATION PLAT