



410 17th Street, Suite 1400
Denver, CO 80202
(720) 440-6100 phone
(720) 305-0804 fax

Bonanzacrk.com

February 12, 2019

State of Colorado
Oil and Gas Conservation Commission
1120 Lincoln Street, Suite 801
Denver, CO 80203

RE: Proposed Wellbore Spacing Unit
State Antelope X44-D14-13HNB
Niobrara New Drill
SENE Section 13, Township 5N, Range 62W, 6th PM
Weld County, Colorado

Dear Director Robbins,

Bonanza Creek Energy Operating Company, LLC. ("Bonanza Creek") is planning to drill the above captioned well in accordance with the provisions of Colorado Oil and Gas Conservation Commission (COGCC) Rule 318A.e.

Bonanza Creek's proposed wellbore spacing unit consists of:

Township 5N, Range 62W (Weld County):
5N-62W-13: S2
5N-62W-14: E2SE

Total acres: 400

The 30 day notification time period has passed and we have not yet received any objections to such well locations or proposed spacing unit, therefore Bonanza Creek hereby requests the Director to approve the above mentioned well. Bonanza Creek respectfully requests the COGCC review the enclosed map illustrating the proposed wellbore spacing unit.

Regards,
Bonanza Creek Energy Operating Company, LLC.

Brian Dodek, P.G.
Manager – Environmental & Regulatory Compliance

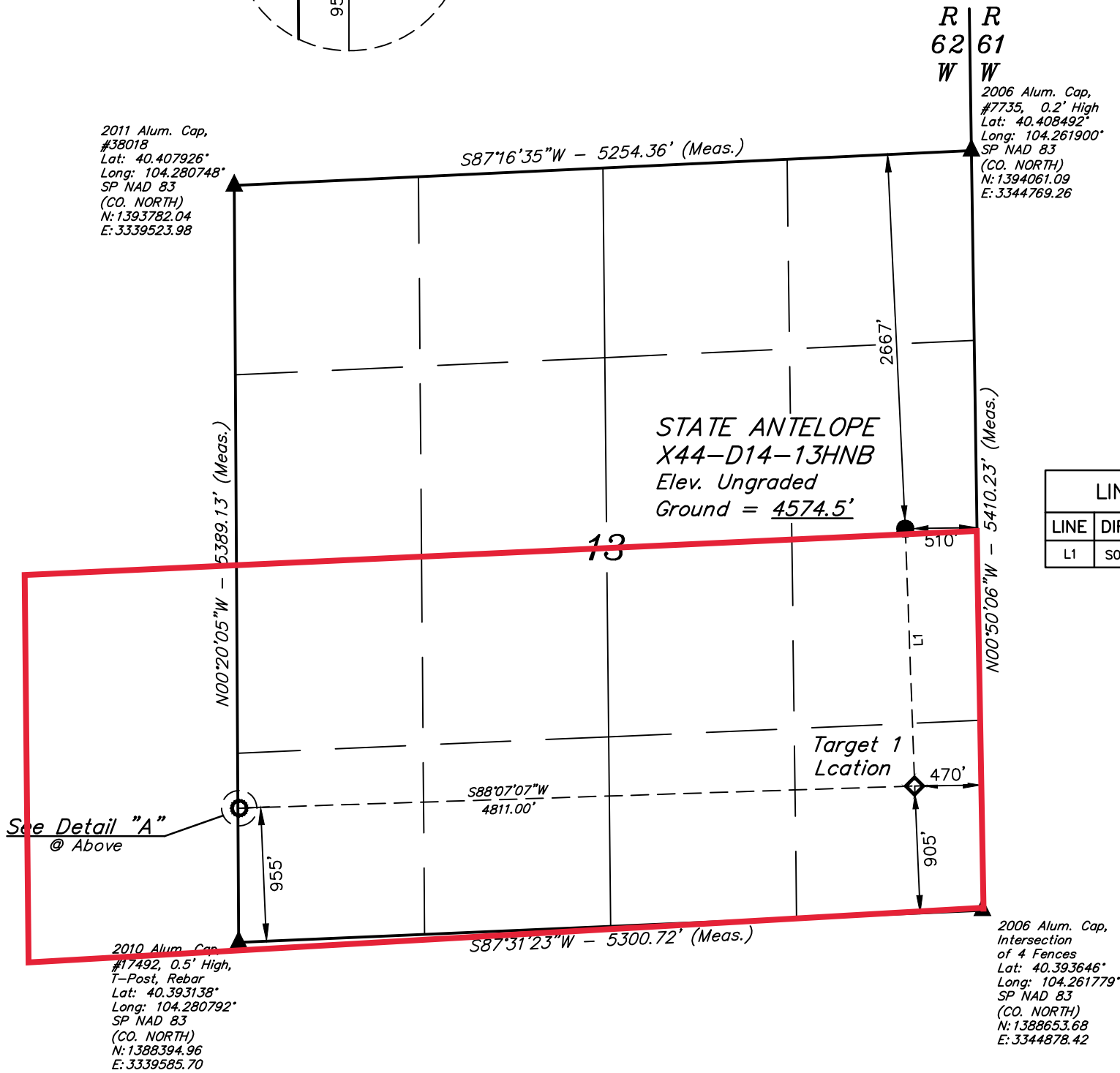
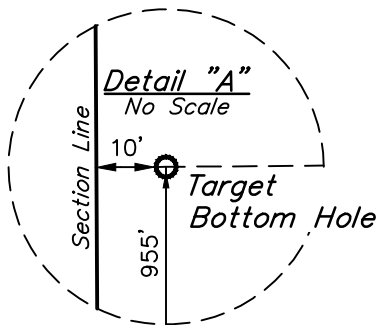
LEGEND:

- = PROPOSED WELLHEAD.
◆ = TARGET 1 LOCATION.
○ = TARGET BOTTOM HOLE.
▲ = SECTION CORNERS LOCATED. (NAD 83)

NOTE:

- Distances referenced on plat to section lines are perpendicular.

T5N, R62W, 6th P.M.



LINE TABLE		
LINE	DIRECTION	LENGTH
L1	S02°05'03"E	1833.80'

NAD 83 (SURFACE LOCATION)
LATITUDE = 40°24'04.02" (40.401116°)
LONGITUDE = 104°15'49.21" (104.263671°)
STATE PLANE NAD 83 (CO. NORTH)
N: 1391367.24' E: 3344313.72'

PDOP = 1.6

NAD 83 (TARGET 1 LOCATION)	NAD 83 (TARGET BOTTOM HOLE)
LATITUDE = 40°23'45.91" (40.396086°)	LATITUDE = 40°23'44.74" (40.395761°)
LONGITUDE = 104°15'48.55" (104.263486°)	LONGITUDE = 104°16'50.69" (104.280748°)
STATE PLANE NAD 83 (CO. NORTH)	STATE PLANE NAD 83 (CO. NORTH)
N: 1389535.63' E: 3344390.67'	N: 1389350.75' E: 3339584.75'

CERTIFICATE

THIS IS TO CERTIFY THAT THE ABOVE PLAT WAS PREPARED FROM FIELD NOTES OF ACTUAL SURVEYS MADE BY ME OR UNDER MY SUPERVISION, AND THAT THE SAME ARE TRUE AND CORRECT TO THE BEST OF MY KNOWLEDGE AND BELIEF.

REGISTERED LAND SURVEYOR
REGISTRATION NO. 28285
STATE OF COLORADO
JARED CHRISTOPHER, M.M.
09-14-18

BASIS OF BEARINGS
TRANSVERSE MERCATOR PROJECTION WITH
A CENTRAL MERIDIAN OF W105°00'00".

BASIS OF ELEVATION
OPUS SOLUTION GENERATED NAVD 88



UELS, LLC
Corporate Office * 85 South 200 East
Vernal, UT 84078 * (435) 789-1017



BONANZA CREEK ENERGY
OPERATING COMPANY, LLC

STATE ANTELOPE X44-D14-13HNB
SE 1/4 NE 1/4, SECTION 13, T5N, R62W, 6th P.M.
WELD COUNTY, COLORADO

SURVEYED BY	JARED CHRISTOPHER, M.M.	09-14-18	SCALE
DRAWN BY	C.IVIE	11-09-18	1" = 1000'

WELL LOCATION PLAT