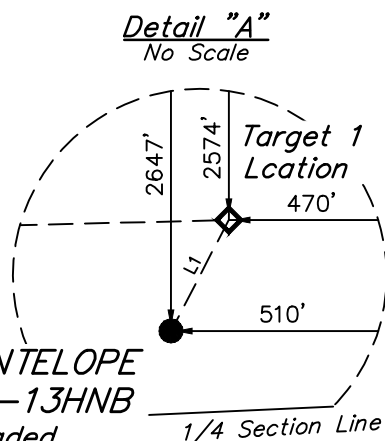
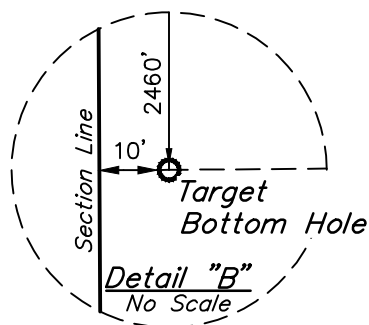


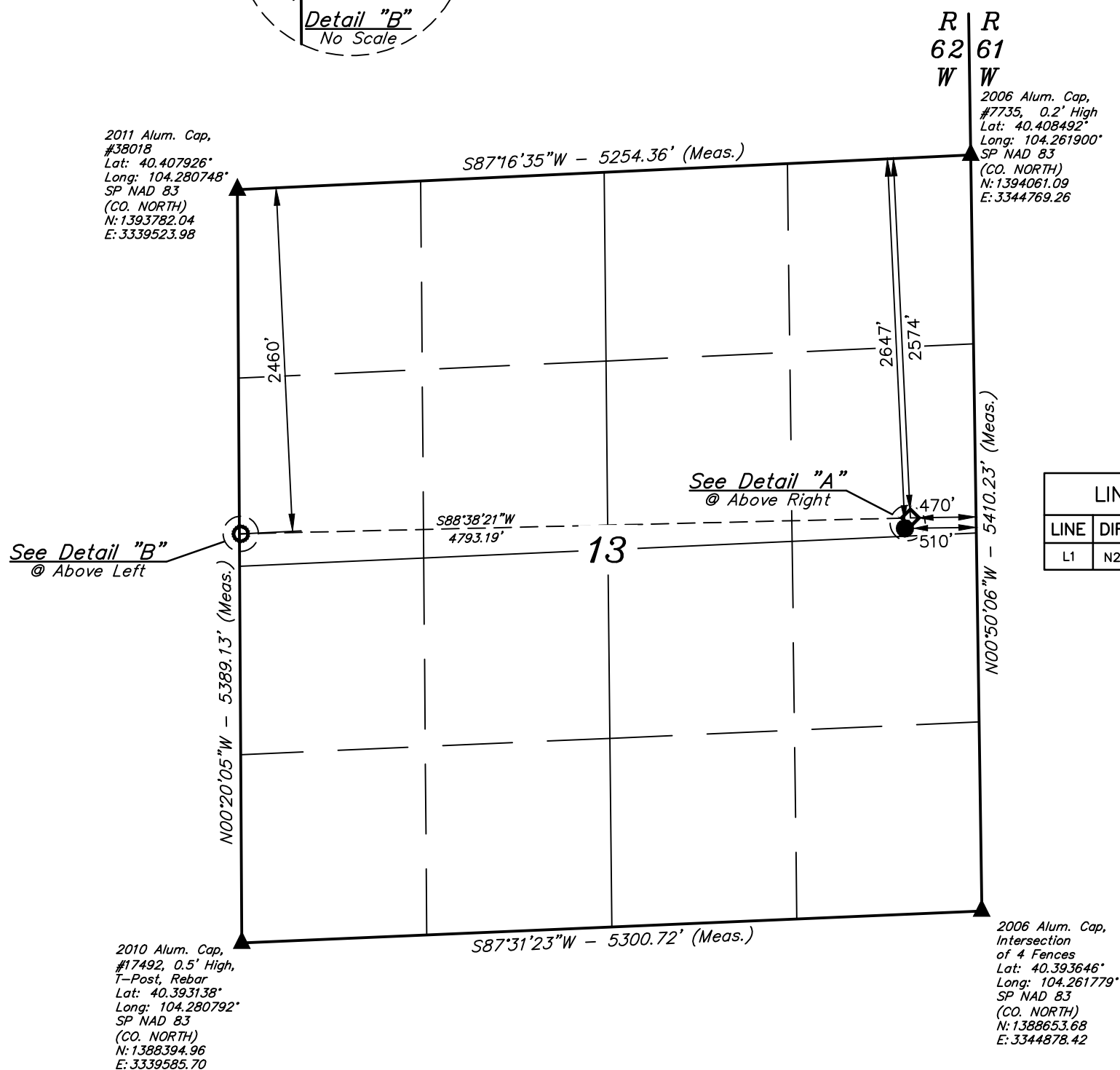
T5N, R62W, 6th P.M.

- = PROPOSED WELLHEAD.
 ◆ = TARGET 1 LOCATION.
 ○ = TARGET BOTTOM HOLE.
 ▲ = SECTION CORNERS
 LOCATED. (NAD 83)

- Distances referenced on plat to section lines are perpendicular.



STATE ANTELOPE
W42-C12-13HNB
Elev. Ungraded
Ground = 4574.8'



LINE TABLE		
LINE	DIRECTION	LENGTH
L1	N27°31'50"E	84.17'

NAD 83 (SURFACE LOCATION)
LATITUDE = 40°24'04.22" (40.401171°)
LONGITUDE = 104°15'49.22" (104.263671°)
STATE PLANE NAD 83 (CO. NORTH)
N: 1391387.23' E: 3344313.31'

NAD 83 (TARGET 1 LOCATION)	NAD 83 (TARGET BOTTOM HOLE)
LATITUDE = 40°24'04.95" (40.401375°)	LATITUDE = 40°24'04.21" (40.401171°)
LONGITUDE = 104°15'48.71" (104.263529°)	LONGITUDE = 104°16'05.64" (104.280732°)
STATE PLANE NAD 83 (CO. NORTH)	STATE PLANE NAD 83 (CO. NORTH)
N: 1391462.06' E: 3344351.78'	N: 1391321.37' E: 3339562.17'

BASIS OF BEARINGS
TRANSVERSE MERCATOR PROJECTION WITH
A CENTRAL MERIDIAN OF W105°00'00".

BASIS OF ELEVATION
OPUS SOLUTION GENERATED NAVD 88



UELS, LLC
Corporate Office * 85 South 200 East
Vernal, UT 84078 * (435) 789-1017



CERTIFICATE

THIS IS TO CERTIFY THAT THE ABOVE STATEMENT WAS PREPARED FROM FIELD NOTES OF ACTUAL SURVEYS MADE BY ME OR UNDER MY SUPERVISION, AND THAT THE SAME ARE TRUE AND CORRECT TO THE BEST OF MY KNOWLEDGE AND BELIEF.

REGISTERED LAND SURVEYOR
REGISTRATION NO. 28285
STATE OF COLORADO
11-09-18

**BONANZA CREEK ENERGY
OPERATING COMPANY, LLC**

STATE ANTELOPE W42-C12-13HNB
SE 1/4 NE 1/4, SECTION 13, T5N, R62W, 6th P.M.
WELD COUNTY, COLORADO

SURVEYED BY	JARED CHRISTOPHER, M.M.	09-14-18	SCALE
DRAWN BY	C.IVIE	11-09-18	1" = 1000'

WELL LOCATION PLAT