

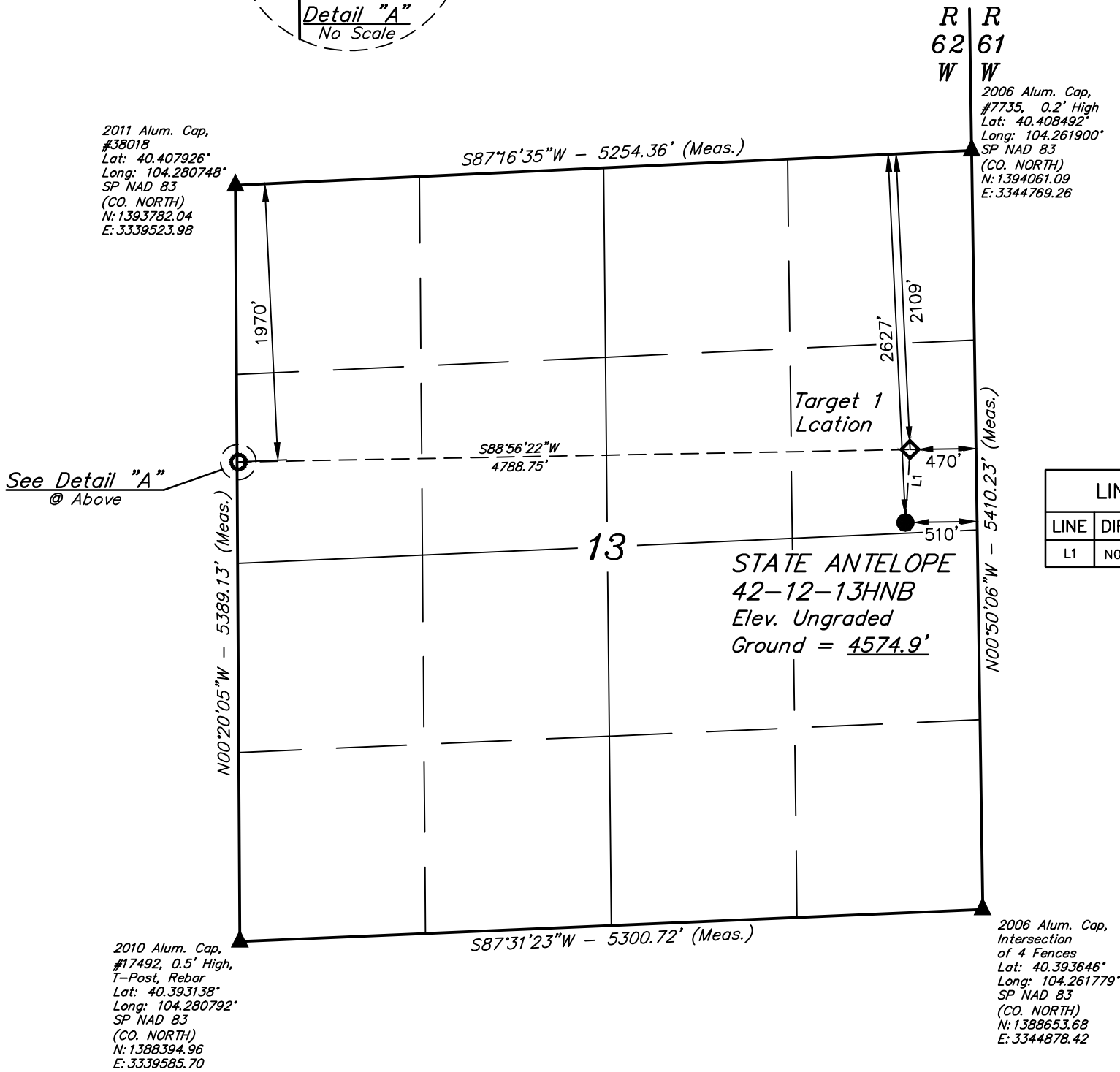
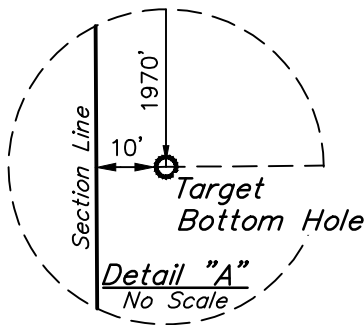
LEGEND:

- = PROPOSED WELLHEAD.  
◆ = TARGET 1 LOCATION.  
○ = TARGET BOTTOM HOLE.  
▲ = SECTION CORNERS LOCATED. (NAD 83)

NOTE:

- Distances referenced on plat to section lines are perpendicular.

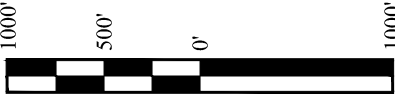
T5N, R62W, 6th P.M.



LINE TABLE		
LINE	DIRECTION	LENGTH
L1	N03°34'07"E	520.85'

NAD 83 (SURFACE LOCATION)
LATITUDE = 40°24'04.41" (40.401226°)
LONGITUDE = 104°15'49.22" (104.263672°)
STATE PLANE NAD 83 (CO. NORTH)
N: 1391407.22' E: 3344312.90'

PDOP = 1.6



NAD 83 (TARGET 1 LOCATION)	NAD 83 (TARGET BOTTOM HOLE)
LATITUDE = 40°24'09.55" (40.402651°)	LATITUDE = 40°24'09.06" (40.402516°)
LONGITUDE = 104°15'48.74" (104.263540°)	LONGITUDE = 104°16'50.62" (104.280728°)
STATE PLANE NAD 83 (CO. NORTH)	STATE PLANE NAD 83 (CO. NORTH)
N: 1391927.07' E: 3344342.39'	N: 1391811.61' E: 3339556.55'

CERTIFICATE  
THIS IS TO CERTIFY THAT THE ABOVE PLAT WAS PREPARED FROM FIELD NOTES OF ACTUAL SURVEYS MADE BY ME OR UNDER MY SUPERVISION AND THAT THE SAME ARE TRUE AND CORRECT TO THE BEST OF MY KNOWLEDGE AND BELIEF.

REGISTERED LAND SURVEYOR  
REGISTRATION NO. 28285  
STATE OF COLORADO  
JARED CHRISTOPHER, M.M.  
09-14-18

**BASIS OF BEARINGS**  
TRANSVERSE MERCATOR PROJECTION WITH  
A CENTRAL MERIDIAN OF W105°00'00".  
**BASIS OF ELEVATION**  
OPUS SOLUTION GENERATED NAVD 88



**UELS, LLC**  
Corporate Office \* 85 South 200 East  
Vernal, UT 84078 \* (435) 789-1017



**BONANZA CREEK ENERGY  
OPERATING COMPANY, LLC**

**STATE ANTELOPE 42-12-13HNB  
SE 1/4 NE 1/4, SECTION 13, T5N, R62W, 6th P.M.  
WELD COUNTY, COLORADO**

SURVEYED BY	JARED CHRISTOPHER, M.M.	09-14-18	SCALE
DRAWN BY	C.IVIE	11-09-18	1" = 1000'

**WELL LOCATION PLAT**