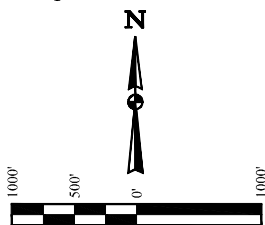
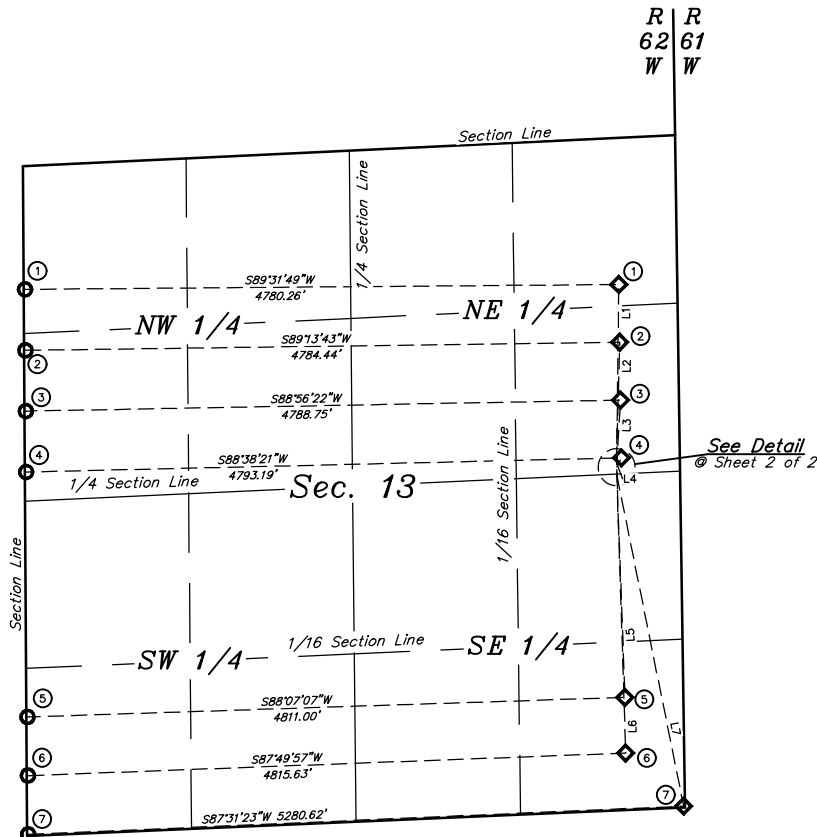


LEGEND:

- = PROPOSED WELLHEAD.
- ◇ = TARGET 1 LOCATION.
- = TARGET BOTTOM HOLE.



LINE TABLE		
LINE	DIRECTION	LENGTH
L1	N00°47'25"E	1410.39'
L2	N01°32'22"E	965.40'
L3	N03°34'07"E	520.85'
L4	N27°31'50"E	84.17'
L5	S02°05'03"E	1833.80'
L6	S01°50'52"E	2261.90'
L7	S11°25'11"E	2721.86'



Sheet 1 of 2

#	WELL NAME	SHL FOOTAGE	SHL LAT (NAD 83)	SHL LONG (NAD 83)	SHL PDOP	SHL ELEV.	SHL 1/4 1/4
1	STATE ANTELOPE V41-B11-13HNB	2587' FNL 510' FEL	N 40.401336°	W 104.263672°	1.4	4575.1'	SENE
2	STATE ANTELOPE V-B-13HNB	2607' FNL 510' FEL	N 40.401281°	W 104.263672°	1.6	4574.9'	SENE
3	STATE ANTELOPE 42-12-13HNB	2627' FNL 510' FEL	N 40.401226°	W 104.263672°	1.6	4574.9'	SENE
4	STATE ANTELOPE W42-C12-13HNB	2647' FNL 510' FEL	N 40.401171°	W 104.263671°	1.6	4574.8'	SENE
5	STATE ANTELOPE X44-D14-13HNB	2667' FNL 510' FEL	N 40.401116°	W 104.263671°	1.6	4574.5'	SENE
6	STATE ANTELOPE Y44-E14-13HNB	2687' FNL 510' FEL	N 40.401061°	W 104.263670°	1.6	4574.0'	SENE
7	STATE ANTELOPE Y-E-13HNB	2699' FSL 510' FEL	N 40.401006°	W 104.263670°	1.6	4573.5'	NESE

**BONANZA CREEK ENERGY
OPERATING COMPANY, LLC**

STATE ANTELOPE 43-13 PAD
SE 1/4 NE 1/4 & NE 1/4 SE 1/4, SECTION 13, T5N, R62W, 6th P.M.
WELD COUNTY, COLORADO

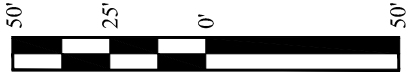


UELS, LLC
Corporate Office * 85 South 200 East
Vernal, UT 84078 * (435) 789-1017

SURVEYED BY	JARED CHRISTOPHER, M.M.	09-14-18	SCALE
DRAWN BY	C. IVIE	11-09-18	1" = 1000'
MULTI-WELL PLAN			

LEGEND:

● = PROPOSED WELLHEAD



- ① ● STATE ANTELOPE V41-B11-13HNB
 20'
 ② ● STATE ANTELOPE V-B-13HNB
 20'
 ③ ● STATE ANTELOPE 42-12-13HNB
 20'
 ④ ● STATE ANTELOPE W42-C12-13HNB
 20'
 ⑤ ● STATE ANTELOPE X44-D14-13HNB
 20'
 ⑥ ● STATE ANTELOPE Y44-E14-13HNB
 20'
 ⑦ ● STATE ANTELOPE Y-E-13HNB

1/4 Section Line

Sheet 2 of 2

#	WELL NAME	SHL FOOTAGE				SHL LAT (NAD 83)	SHL LONG (NAD 83)	SHL PDOP	SHL ELEV.	SHL 1/4 1/4
1	STATE ANTELOPE V41-B11-13HNB	2587'	FNL	510'	FEL	N 40.401336°	W 104.263672°	1.4	4575.1'	SENE
2	STATE ANTELOPE V-B-13HNB	2607'	FNL	510'	FEL	N 40.401281°	W 104.263672°	1.6	4574.9'	SENE
3	STATE ANTELOPE 42-12-13HNB	2627'	FNL	510'	FEL	N 40.401226°	W 104.263672°	1.6	4574.9'	SENE
4	STATE ANTELOPE W42-C12-13HNB	2647'	FNL	510'	FEL	N 40.401171°	W 104.263671°	1.6	4574.8'	SENE
5	STATE ANTELOPE X44-D14-13HNB	2667'	FNL	510'	FEL	N 40.401116°	W 104.263671°	1.6	4574.5'	SENE
6	STATE ANTELOPE Y44-E14-13HNB	2687'	FNL	510'	FEL	N 40.401061°	W 104.263670°	1.6	4574.0'	SENE
7	STATE ANTELOPE Y-E-13HNB	2699'	FSL	510'	FEL	N 40.401006°	W 104.263670°	1.6	4573.5'	NESE

**BONANZA CREEK ENERGY
OPERATING COMPANY, LLC**

STATE ANTELOPE 43-13 PAD
 SE 1/4 NE 1/4 & NE 1/4 SE 1/4, SECTION 13, T5N, R62W, 6th P.M.
 WELD COUNTY, COLORADO



UELS, LLC
 Corporate Office * 85 South 200 East
 Vernal, UT 84078 * (435) 789-1017

SURVEYED BY	JARED CHRISTOPHER, M.M.	09-14-18	SCALE
DRAWN BY	C.IVIE	11-09-18	1" = 1000'
MULTI-WELL PLAN			