

Inspection Photos

Loc#436196

Operator: Ursa

Inspection Number: 692400813

Inspection Date: 3/19/2019



COLORADO
Oil & Gas Conservation
Commission
Department of Natural Resources



Photo#1: 4/30/18

Twenty tanks were noted stored in grassy area,
East of, & adjacent to access road entry.

March 19,2019



Photo#2: 3/19/19

Eight tanks were noted stored in grassy area,
East of, & adjacent to access road entry.



COLORADO
Oil & Gas Conservation
Commission
Department of Natural Resources

Inspection Photos: Ursa Burckle Cuttings Staging Area Loc#436196



Photo#3: 4/30/18

View over Location from entry to South. Reclamation has been installed.

March 19,2019



Photo#4: 3/19/19

View over Location from entry to South. Reclamation has been installed.



COLORADO
Oil & Gas Conservation
Commission
Department of Natural Resources

Inspection Photos: Ursa Burckle Cuttings Staging Area Loc#436196



Photo#5: 4/30/18

View over Location to Southeast. Reclamation has been installed.

March 19,2019



Photo#6: 3/19/19

View over Location to Southeast. Reclamation has been installed.



COLORADO
Oil & Gas Conservation
Commission
Department of Natural Resources

Inspection Photos: Ursa Burckle Cuttings Staging Area Loc#436196



Photo#7:
Overflow point of pond; South side of berm.

March 19,2019



Photo#8:
North side of berm where overflow discharges,
needs repair, maintenance.



Photo#9:

North side of berm where overflow discharges, needs repair, maintenance.

March 19,2019



Photo#10:

North side of berm where overflow discharges, needs repair, maintenance.



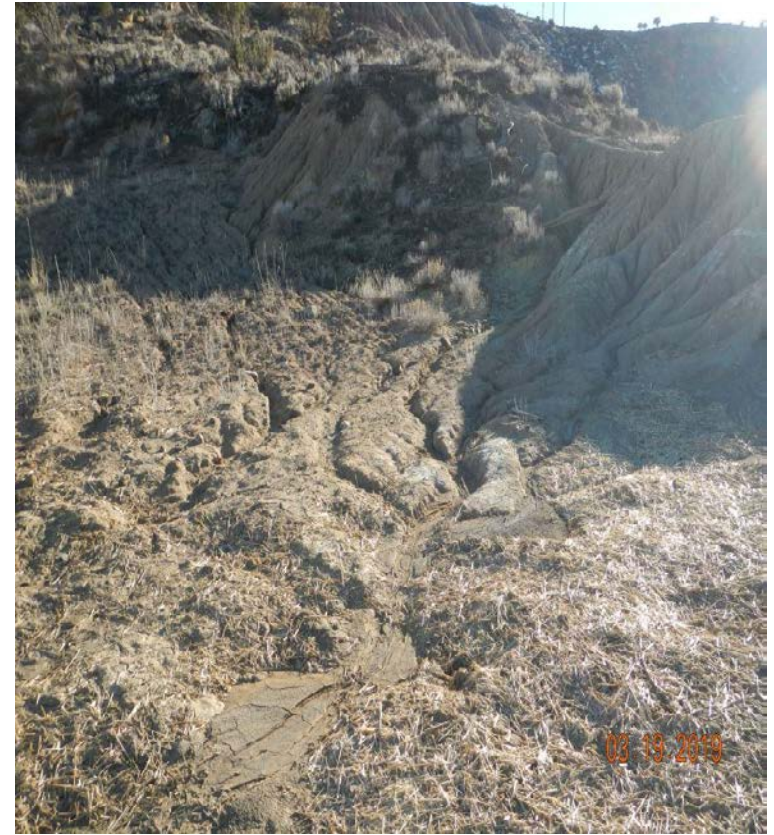
COLORADO
Oil & Gas Conservation
Commission
Department of Natural Resources

Inspection Photos: Ursa Burckle Cuttings Staging Area Loc#436196



Photo#11:
Sediment flowing from off site into Location makes this site a challenge.

March 19,2019



Photo#12:
Sediment flowing from off site into Location makes this site a challenge. .



Photo#13:
Sediment flowing from off site into Location makes this site a challenge.

March 19,2019



Photo#14:
Sediment flowing from off site into Location makes this site a challenge.



Photo#15:

View of South west area of site; arrow indicates where two strips of erosion blanket (with plastic netting) were installed; insert is close up view of blanket.

March 19,2019



COLORADO
Oil & Gas Conservation
Commission
Department of Natural Resources

Inspection Photos: Ursa Burckle Cuttings Staging Area Loc#436196



Photo#16:

View over West side of Location; following photos show detail of developing areas of concern.

March 19,2019



COLORADO
Oil & Gas Conservation
Commission
Department of Natural Resources

Inspection Photos: Ursa Burckle Cuttings Staging Area Loc#436196



Photo#17:
Area of concern.

March 19,2019



Photo#18:
Area of Concern.



COLORADO
Oil & Gas Conservation
Commission
Department of Natural Resources

Inspection Photos: Ursa Burckle Cuttings Staging Area Loc#436196