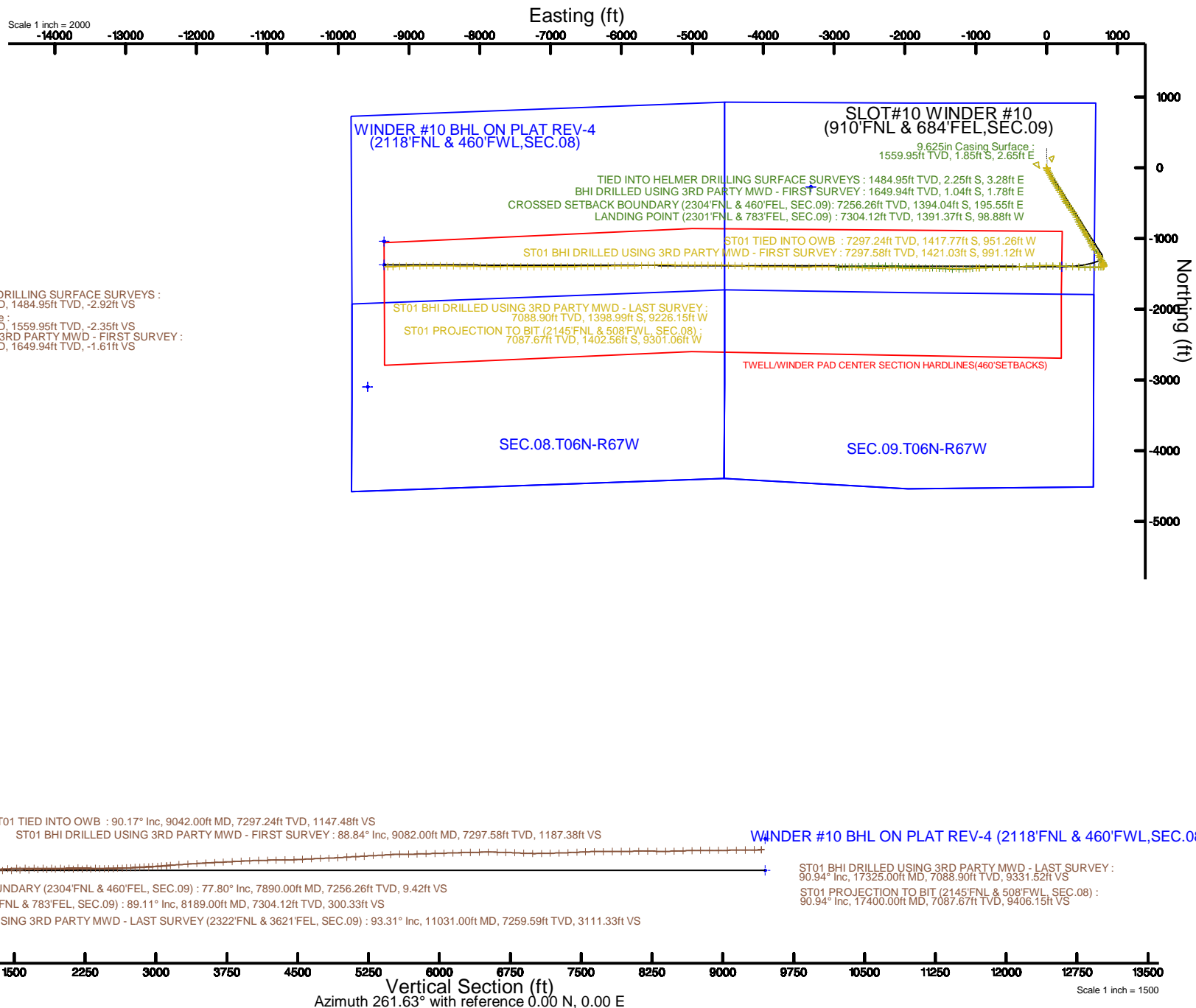




# EXTRACTION OIL & GAS

Location: COLORADO Slot: SLOT#10 WINDER #10 (910'FNL & 684'FEL, SEC.09)  
Field: WELD COUNTY (NAD83/TRUE NORTH) Well: WINDER #10  
Facility: SEC.09-T06N-R67W Wellbore: WINDER #10 PWB

Plot reference wellpath is WINDER #10 (REV.E.G. CODELL) PWP	Grid System: NAD83 / Lambert Colorado SP. Northern Zone (501), US feet
True vertical depths are referenced to PATTERSON 346 (25KB) (RKB)	* - Wellpath was transformed from a different geodetic datum
Measured depths are referenced to PATTERSON 346 (25KB) (RKB)	North Reference: True north
PATTERSON 346 (25KB) (RKB) to Mean Sea Level: 4893 feet	Scale: True distance
Mean Sea Level to Mud line (At Slot: SLOT#10 WINDER #10 (910'FNL & 684'FEL, SEC.09)): 0 feet	Depths are in feet
Coordinates are in feet referenced to Slot	Created by: crosara on 2016-10-26
	Database: WA_DEN_Denver_Defn





# Actual Wellpath Report

WINDER #10 AWP

Page 1 of 6



## REFERENCE WELLPATH IDENTIFICATION

Operator	EXTRACTION OIL & GAS	Slot	SLOT#10 WINDER #10 (910'FNL & 684'FEL,SEC.09)
Area	COLORADO	Well	WINDER #10
Field	WELD COUNTY (NAD83/TRUE NORTH)	Wellbore	WINDER #10 AWB
Facility	SEC.09-T06N-R67W		

## REPORT SETUP INFORMATION

Projection System	NAD83 / Lambert Colorado SP, Northern Zone (501), US feet	Software System	WellArchitect® 5.0
North Reference	True	User	Croscara
Scale	0.999967	Report Generated	10/26/2016 at 10:24:13 AM
Convergence at slot	0.40° East	Database/Source file	WA_DEN_Denver_Defn/WINDER_#10_AWP.xml

## WELLPATH LOCATION

	Local coordinates		Grid coordinates		Geographic coordinates	
	North[ft]	East[ft]	Easting[US ft]	Northing[US ft]	Latitude	Longitude
Slot Location	-234.18	-1.93	3169264.91	1427941.68	40°30'23.422"N	104°53'28.637"W
Facility Reference Pt			3169265.23	1428175.85	40°30'25.736"N	104°53'28.612"W
Field Reference Pt			3185481.27	1419166.81	40°28'55.560"N	104°49'59.556"W

## WELLPATH DATUM

Calculation method	Minimum curvature	PATTERSON 346 (25'KB) (RKB) to Facility Vertical Datum	4893.00ft
Horizontal Reference Pt	Slot	PATTERSON 346 (25'KB) (RKB) to Mean Sea Level	4893.00ft
Vertical Reference Pt	PATTERSON 346 (25'KB) (RKB)	PATTERSON 346 (25'KB) (RKB) to Mud Line at Slot (SLOT#10 WINDER #10 (910'FNL & 684'FEL,SEC.09))	4893.00ft
MD Reference Pt	PATTERSON 346 (25'KB) (RKB)	Section Origin	N 0.00, E 0.00 ft
Field Vertical Reference	Mean Sea Level	Section Azimuth	261.63°



# Actual Wellpath Report

WINDER #10 AWP

Page 2 of 6



## REFERENCE WELLPATH IDENTIFICATION

Operator	EXTRACTION OIL & GAS	Slot	SLOT#10 WINDER #10 (910'FNL & 684'FEL,SEC.09)
Area	COLORADO	Well	WINDER #10
Field	WELD COUNTY (NAD83/TRUE NORTH)	Wellbore	WINDER #10 AWB
Facility	SEC.09-T06N-R67W		

## WELLPATH DATA (117 stations)

MD [ft]	Inclination [°]	Azimuth [°]	TVD [ft]	Vert Sect [ft]	North [ft]	East [ft]	Latitude	Longitude	DLS [°/100ft]	Comments
0.00	0.000	56.700	0.00	0.00	0.00	0.00	40°30'23.422°N	104°53'28.637°W	0.00	
72.00	0.400	56.700	72.00	-0.23	0.14	0.21	40°30'23.423°N	104°53'28.634°W	0.56	
166.00	0.500	21.900	166.00	-0.73	0.70	0.64	40°30'23.429°N	104°53'28.629°W	0.30	
261.00	0.200	110.500	261.00	-1.09	1.03	0.95	40°30'23.432°N	104°53'28.625°W	0.56	
356.00	0.500	62.100	355.99	-1.62	1.16	1.47	40°30'23.433°N	104°53'28.618°W	0.42	
451.00	0.700	97.600	450.99	-2.57	1.28	2.41	40°30'23.435°N	104°53'28.606°W	0.43	
546.00	0.900	151.800	545.98	-3.38	0.54	3.34	40°30'23.427°N	104°53'28.594°W	0.79	
641.00	0.800	190.600	640.97	-3.42	-0.77	3.57	40°30'23.414°N	104°53'28.591°W	0.60	
736.00	0.400	169.000	735.97	-3.22	-1.74	3.51	40°30'23.405°N	104°53'28.592°W	0.48	
831.00	0.700	163.300	830.96	-3.32	-2.62	3.74	40°30'23.396°N	104°53'28.589°W	0.32	
926.00	0.300	196.900	925.96	-3.30	-3.42	3.83	40°30'23.388°N	104°53'28.587°W	0.51	
1022.00	0.300	248.800	1021.96	-2.94	-3.75	3.53	40°30'23.385°N	104°53'28.591°W	0.27	
1117.00	0.300	69.300	1116.96	-2.94	-3.75	3.53	40°30'23.385°N	104°53'28.591°W	0.63	
1212.00	0.300	306.000	1211.96	-3.01	-3.52	3.56	40°30'23.387°N	104°53'28.591°W	0.56	
1307.00	0.100	78.200	1306.95	-2.91	-3.35	3.44	40°30'23.389°N	104°53'28.592°W	0.39	
1402.00	0.600	5.300	1401.95	-3.11	-2.84	3.57	40°30'23.394°N	104°53'28.591°W	0.61	
1485.00	0.500	295.300	1484.95	-2.92	-2.25	3.28	40°30'23.400°N	104°53'28.595°W	0.77	TIED INTO HELMER DRILLING SURFACE SURVEYS
1650.00	0.860	316.980	1649.94	-1.61	-1.04	1.78	40°30'23.412°N	104°53'28.614°W	0.26	BHI DRILLED USING 3RD PARTY MWD - FIRST SURVEY
1745.00	3.200	189.820	1744.89	-0.38	-3.13	0.84	40°30'23.391°N	104°53'28.626°W	3.98	
1839.00	5.720	170.450	1838.61	0.34	-10.34	1.17	40°30'23.320°N	104°53'28.622°W	3.09	
1934.00	9.660	155.790	1932.74	-1.93	-22.28	5.23	40°30'23.202°N	104°53'28.569°W	4.60	
2029.00	12.620	154.320	2025.94	-7.20	-38.91	13.00	40°30'23.038°N	104°53'28.469°W	3.13	
2123.00	14.700	153.510	2117.28	-13.96	-58.84	22.77	40°30'22.841°N	104°53'28.342°W	2.22	
2218.00	16.550	150.050	2208.77	-22.69	-81.36	34.90	40°30'22.618°N	104°53'28.185°W	2.18	
2312.00	17.890	150.120	2298.55	-32.91	-105.48	48.78	40°30'22.380°N	104°53'28.006°W	1.43	
2408.00	20.090	152.590	2389.32	-43.70	-132.90	63.72	40°30'22.109°N	104°53'27.812°W	2.44	
2503.00	21.410	154.540	2478.16	-54.12	-163.04	78.68	40°30'21.811°N	104°53'27.618°W	1.57	
2597.00	23.340	151.440	2565.08	-65.59	-194.89	94.96	40°30'21.496°N	104°53'27.408°W	2.41	
2692.00	23.810	147.820	2652.15	-79.82	-227.65	114.17	40°30'21.172°N	104°53'27.159°W	1.60	
2787.00	22.560	147.170	2739.48	-95.11	-259.20	134.27	40°30'20.861°N	104°53'26.899°W	1.34	
2882.00	24.090	144.620	2826.72	-111.47	-290.32	155.37	40°30'20.553°N	104°53'26.626°W	1.93	
2977.00	23.610	145.230	2913.60	-128.73	-321.76	177.45	40°30'20.243°N	104°53'26.340°W	0.57	
3071.00	21.910	147.150	3000.28	-144.37	-351.95	197.70	40°30'19.944°N	104°53'26.078°W	1.97	
3166.00	22.140	152.260	3088.36	-157.65	-382.69	215.65	40°30'19.640°N	104°53'25.845°W	2.03	
3261.00	23.080	155.540	3176.06	-168.75	-415.49	231.69	40°30'19.316°N	104°53'25.638°W	1.66	
3356.00	23.460	150.660	3263.34	-180.68	-448.93	248.67	40°30'18.986°N	104°53'25.418°W	2.07	
3451.00	21.050	151.500	3351.26	-193.33	-480.41	266.08	40°30'18.675°N	104°53'25.192°W	2.56	
3546.00	21.570	143.260	3439.78	-207.50	-509.40	284.67	40°30'18.388°N	104°53'24.952°W	3.20	
3641.00	22.980	139.010	3527.69	-225.80	-537.40	307.28	40°30'18.112°N	104°53'24.659°W	2.25	
3736.00	23.780	144.390	3614.90	-244.56	-566.97	330.60	40°30'17.819°N	104°53'24.357°W	2.40	
3830.00	24.770	146.540	3700.59	-261.59	-598.81	352.49	40°30'17.505°N	104°53'24.074°W	1.41	
3925.00	25.010	145.770	3786.77	-278.79	-632.01	374.76	40°30'17.177°N	104°53'23.786°W	0.42	
4020.00	26.470	149.880	3872.35	-295.40	-666.94	396.69	40°30'16.832°N	104°53'23.502°W	2.43	
4115.00	25.110	151.710	3957.88	-310.11	-703.00	416.87	40°30'16.475°N	104°53'23.241°W	1.66	
4210.00	22.100	151.690	4044.93	-323.08	-736.49	434.90	40°30'16.144°N	104°53'23.007°W	3.17	



# Actual Wellpath Report

WINDER #10 AWP

Page 3 of 6



## REFERENCE WELLPATH IDENTIFICATION

Operator	EXTRACTION OIL & GAS	Slot	SLOT#10 WINDER #10 (910'FNL & 684'FEL, SEC.09)
Area	COLORADO	Well	WINDER #10
Field	WELD COUNTY (NAD83/TRUE NORTH)	Wellbore	WINDER #10 AWB
Facility	SEC.09-T06N-R67W		

## WELLPATH DATA (117 stations) † = interpolated/extrapolated station

MD [ft]	Inclination [°]	Azimuth [°]	TVD [ft]	Vert Sect [ft]	North [ft]	East [ft]	Latitude	Longitude	DLS [°/100ft]	Comments
4304.00	22.170	154.640	4132.00	-334.29	-768.09	450.88	40°30'15.832"N	104°53'22.800"W	1.18	
4399.00	22.290	155.840	4219.94	-344.43	-800.72	465.93	40°30'15.510"N	104°53'22.605"W	0.49	
4494.00	21.800	145.830	4308.03	-357.02	-831.77	483.22	40°30'15.203"N	104°53'22.382"W	3.98	
4589.00	24.470	148.200	4395.38	-372.52	-863.09	503.50	40°30'14.893"N	104°53'22.119"W	2.98	
4683.00	23.160	147.900	4481.37	-387.70	-895.30	523.58	40°30'14.575"N	104°53'21.859"W	1.40	
4777.00	19.850	149.520	4568.82	-401.15	-924.72	541.50	40°30'14.284"N	104°53'21.627"W	3.58	
4872.00	22.120	147.960	4657.51	-414.41	-953.78	559.18	40°30'13.997"N	104°53'21.398"W	2.46	
4967.00	21.920	148.860	4745.58	-428.45	-984.12	577.84	40°30'13.697"N	104°53'21.157"W	0.41	
5062.00	23.600	151.020	4833.18	-442.01	-1015.94	596.22	40°30'13.383"N	104°53'20.919"W	1.97	
5157.00	21.560	152.210	4920.90	-454.51	-1048.02	613.57	40°30'13.066"N	104°53'20.694"W	2.20	
5252.00	20.000	151.000	5009.72	-466.04	-1077.67	629.59	40°30'12.773"N	104°53'20.487"W	1.70	
5347.00	19.050	152.600	5099.25	-476.82	-1105.65	644.60	40°30'12.497"N	104°53'20.292"W	1.15	
5441.00	19.580	147.990	5187.97	-488.14	-1132.62	660.01	40°30'12.230"N	104°53'20.093"W	1.72	
5536.00	20.180	142.000	5277.31	-502.63	-1159.04	678.54	40°30'11.969"N	104°53'19.853"W	2.23	
5725.00	21.130	144.250	5454.17	-534.41	-1212.37	718.51	40°30'11.442"N	104°53'19.336"W	0.65	
5819.00	20.350	153.380	5542.10	-547.33	-1240.75	735.74	40°30'11.162"N	104°53'19.113"W	3.53	
5914.00	18.230	154.200	5631.76	-556.95	-1268.89	749.61	40°30'10.883"N	104°53'18.933"W	2.25	
6009.00	15.960	147.910	5722.56	-566.66	-1293.34	763.02	40°30'10.642"N	104°53'18.760"W	3.08	
6104.00	14.140	147.760	5814.30	-576.61	-1314.23	776.15	40°30'10.435"N	104°53'18.590"W	1.92	
6199.00	11.190	157.530	5906.99	-583.56	-1332.56	785.87	40°30'10.254"N	104°53'18.464"W	3.83	
6294.00	9.990	153.410	6000.37	-588.38	-1348.45	793.08	40°30'10.097"N	104°53'18.371"W	1.49	
6388.00	6.430	156.190	6093.39	-592.33	-1360.56	798.86	40°30'09.978"N	104°53'18.296"W	3.81	
6483.00	7.090	159.680	6187.73	-594.96	-1370.93	803.04	40°30'09.875"N	104°53'18.242"W	0.82	
6577.00	5.990	169.730	6281.12	-596.33	-1381.19	805.93	40°30'09.774"N	104°53'18.204"W	1.68	
6672.00	3.420	177.640	6375.80	-596.19	-1388.90	806.93	40°30'09.697"N	104°53'18.191"W	2.78	
6766.00	2.280	221.460	6469.69	-594.47	-1393.11	805.81	40°30'09.656"N	104°53'18.206"W	2.53	
6861.00	2.850	237.810	6564.59	-590.87	-1395.78	802.56	40°30'09.630"N	104°53'18.248"W	0.97	
6956.00	3.600	227.690	6659.44	-586.23	-1399.05	798.35	40°30'09.597"N	104°53'18.302"W	0.99	
7050.00	7.340	253.360	6753.01	-577.84	-1402.76	790.41	40°30'09.561"N	104°53'18.405"W	4.66	
7146.00	19.700	265.340	6846.19	-555.53	-1405.84	768.32	40°30'09.530"N	104°53'18.691"W	13.13	
7240.00	28.330	267.860	6931.97	-517.48	-1407.96	730.17	40°30'09.509"N	104°53'19.185"W	9.24	
7335.00	36.510	268.140	7012.10	-466.90	-1409.72	679.31	40°30'09.492"N	104°53'19.843"W	8.61	
7430.00	47.550	268.690	7082.55	-403.85	-1411.45	615.83	40°30'09.475"N	104°53'20.665"W	11.63	
7525.00	61.130	272.200	7137.82	-327.80	-1410.65	538.85	40°30'09.483"N	104°53'21.662"W	14.60	
7620.00	67.640	274.230	7178.87	-243.94	-1405.81	453.37	40°30'09.531"N	104°53'22.768"W	7.12	
7715.00	70.700	273.100	7212.65	-157.11	-1400.14	364.77	40°30'09.587"N	104°53'23.915"W	3.41	
7809.00	77.130	271.640	7238.68	-68.42	-1396.43	274.58	40°30'09.623"N	104°53'25.083"W	7.00	
7890.00†	77.804	271.819	7256.26	9.42	-1394.04	195.55	40°30'09.647"N	104°53'26.106"W	0.86	CROSSED SETBACK BOUNDARY (2304'FNL & 460'FEL, SEC.09)
7904.00	77.920	271.850	7259.20	22.89	-1393.60	181.87	40°30'09.651"N	104°53'26.283"W	0.86	
7999.00	77.210	272.020	7279.66	114.17	-1390.47	89.15	40°30'09.682"N	104°53'27.483"W	0.77	
8093.00	81.960	269.370	7296.65	205.43	-1389.36	-3.26	40°30'09.693"N	104°53'28.679"W	5.76	
8189.00	89.110	268.230	7304.12	300.33	-1391.37	-98.88	40°30'09.673"N	104°53'29.917"W	7.54	LANDING POINT (2301'FNL & 783'FEL, SEC.09)
8284.00	90.610	268.440	7304.35	394.68	-1394.13	-193.84	40°30'09.646"N	104°53'31.146"W	1.59	
8379.00	91.290	266.880	7302.77	489.14	-1398.01	-288.74	40°30'09.608"N	104°53'32.375"W	1.79	
8474.00	91.590	266.790	7300.39	583.72	-1403.25	-383.57	40°30'09.556"N	104°53'33.602"W	0.33	



# Actual Wellpath Report

WINDER #10 AWP

Page 4 of 6



## REFERENCE WELLPATH IDENTIFICATION

Operator	EXTRACTION OIL & GAS	Slot	SLOT#10 WINDER #10 (910'FNL & 684'FEL, SEC.09)
Area	COLORADO	Well	WINDER #10
Field	WELD COUNTY (NAD83/TRUE NORTH)	Wellbore	WINDER #10 AWB
Facility	SEC.09-T06N-R67W		

## WELLPATH DATA (117 stations)

MD [ft]	Inclination [°]	Azimuth [°]	TVD [ft]	Vert Sect [ft]	North [ft]	East [ft]	Latitude	Longitude	DLS [°/100ft]	Comments
8569.00	89.830	267.730	7299.21	678.25	-1407.79	-478.45	40°30'09.511"N	104°53'34.831"W	2.10	
8663.00	89.260	269.560	7299.95	771.53	-1410.02	-572.42	40°30'09.489"N	104°53'36.047"W	2.04	
8758.00	90.570	269.850	7300.10	865.59	-1410.51	-667.41	40°30'09.484"N	104°53'37.277"W	1.41	
8853.00	90.620	269.460	7299.11	959.66	-1411.08	-762.40	40°30'09.478"N	104°53'38.506"W	0.41	
8947.00	90.740	267.720	7297.99	1052.95	-1413.39	-856.37	40°30'09.455"N	104°53'39.723"W	1.86	
9042.00	90.170	266.990	7297.24	1147.48	-1417.77	-951.26	40°30'09.412"N	104°53'40.951"W	0.97	
9137.00	90.650	265.670	7296.56	1242.15	-1423.86	-1046.06	40°30'09.352"N	104°53'42.178"W	1.48	
9232.00	92.840	265.070	7293.67	1336.90	-1431.52	-1140.70	40°30'09.276"N	104°53'43.403"W	2.39	
9326.00	92.890	268.990	7288.97	1430.35	-1436.38	-1234.44	40°30'09.228"N	104°53'44.617"W	4.17	
9421.00	91.790	272.260	7285.09	1524.09	-1435.35	-1329.34	40°30'09.238"N	104°53'45.845"W	3.63	
9516.00	90.440	273.320	7283.24	1617.27	-1430.72	-1424.21	40°30'09.284"N	104°53'47.073"W	1.81	
9610.00	89.110	272.860	7283.61	1709.39	-1425.66	-1518.07	40°30'09.334"N	104°53'48.288"W	1.50	
9705.00	88.820	272.610	7285.32	1802.60	-1421.12	-1612.94	40°30'09.379"N	104°53'49.517"W	0.40	
9800.00	90.780	272.710	7285.65	1895.84	-1416.72	-1707.83	40°30'09.422"N	104°53'50.745"W	2.07	
9894.00	91.090	272.620	7284.12	1988.09	-1412.35	-1801.72	40°30'09.465"N	104°53'51.960"W	0.34	
9989.00	91.580	272.460	7281.91	2081.35	-1408.14	-1896.60	40°30'09.507"N	104°53'53.189"W	0.54	
10085.00	89.890	273.310	7280.68	2175.49	-1403.30	-1992.47	40°30'09.555"N	104°53'54.430"W	1.97	
10179.00	88.740	272.680	7281.80	2267.64	-1398.39	-2086.33	40°30'09.603"N	104°53'55.645"W	1.39	
10274.00	87.810	272.210	7284.66	2360.91	-1394.34	-2181.20	40°30'09.643"N	104°53'56.873"W	1.10	
10369.00	88.910	270.700	7287.38	2454.47	-1391.93	-2276.13	40°30'09.667"N	104°53'58.102"W	1.97	
10464.00	91.360	269.390	7287.15	2548.44	-1391.86	-2371.12	40°30'09.667"N	104°53'59.331"W	2.92	
10558.00	92.650	268.200	7283.87	2641.65	-1393.83	-2465.03	40°30'09.648"N	104°54'00.547"W	1.87	
10652.00	93.080	267.420	7279.17	2734.98	-1397.42	-2558.85	40°30'09.612"N	104°54'01.761"W	0.95	
10747.00	92.450	267.940	7274.58	2829.34	-1401.26	-2653.66	40°30'09.574"N	104°54'02.989"W	0.86	
10842.00	92.860	268.060	7270.18	2923.65	-1404.57	-2748.50	40°30'09.541"N	104°54'04.216"W	0.45	
10936.00	93.340	267.700	7265.10	3016.96	-1408.05	-2842.30	40°30'09.507"N	104°54'05.431"W	0.64	
11031.00	93.310	266.950	7259.59	3111.33	-1412.47	-2937.03	40°30'09.463"N	104°54'06.657"W	0.79	BHI DRILLED USING 3RD PARTY MWD - LAST SURVEY (2322'FNL & 3621'FEL, SEC.09)

## HOLE & CASING SECTIONS - Ref Wellbore: WINDER #10 AWB Ref Wellpath: WINDER #10 AWP

String/Diameter	Start MD [ft]	End MD [ft]	Interval [ft]	Start TVD [ft]	End TVD [ft]	Start N/S [ft]	Start E/W [ft]	End N/S [ft]	End E/W [ft]
13.5in Open Hole	0.00	1570.00	1570.00	0.00	1569.95	0.00	0.00	-1.78	2.56
9.625in Casing Surface	0.00	1560.00	1560.00	0.00	1559.95	0.00	0.00	-1.85	2.65
7.875in Open Hole	1570.00	11031.00	9461.00	1569.95	7259.59	-1.78	2.56	-1412.47	-2937.03



# Actual Wellpath Report

WINDER #10 AWP

Page 5 of 6



## REFERENCE WELLPATH IDENTIFICATION

Operator	EXTRACTION OIL & GAS	Slot	SLOT#10 WINDER #10 (910'FNL & 684'FEL, SEC.09)
Area	COLORADO	Well	WINDER #10
Field	WELD COUNTY (NAD83/TRUE NORTH)	Wellbore	WINDER #10 AWB
Facility	SEC.09-T06N-R67W		

## TARGETS

Name	TVD [ft]	North [ft]	East [ft]	Grid East [US ft]	Grid North [US ft]	Latitude	Longitude	Shape
TWELL/WINDER 1/2 SECTION 08	57.00	-3100.01	-9582.77	3159703.97	1424776.07	40°29'52.771"N	104°55'32.678"W	polygon
TWELL/WINDER 1/2 SECTION 09	57.00	-3100.01	-9582.77	3159703.97	1424776.07	40°29'52.771"N	104°55'32.678"W	polygon
TWELL/WINDER SECTION 08	57.00	-3100.01	-9582.77	3159703.97	1424776.07	40°29'52.771"N	104°55'32.678"W	polygon
TWELL/WINDER SECTION 09	57.00	-3100.01	-9582.77	3159703.97	1424776.07	40°29'52.771"N	104°55'32.678"W	polygon
WINDER #10 BHL ON PLAT REV-3 (2118'FNL & 460'FWL, SEC.08)	6970.00	-1375.39	-9349.37	3159925.53	1426502.19	40°30'09.814"N	104°55'29.665"W	point
WINDER #10 LANDING POINT ON PLAT REV-3 (2310'FNL & 460'FEL, SEC.09)	6970.00	-1400.48	212.20	3169486.71	1426542.73	40°30'09.583"N	104°53'25.890"W	point
WINDER #10 BHL ON PLAT REV-4 (2118'FNL & 460'FWL, SEC.08)	7307.00	-1375.35	-9349.35	3159925.55	1426502.23	40°30'09.814"N	104°55'29.665"W	point
WINDER #10 LANDING POINT ON PLAT REV-4 (2310'FNL & 460'FEL, SEC.09)	7307.00	-1400.50	212.20	3169486.71	1426542.71	40°30'09.583"N	104°53'25.890"W	point
WINDER #10 BHL ON PLAT REV-2 (1789'FNL & 460'FWL, SEC.08)	7405.00	-1045.34	-9350.92	3159921.71	1426832.21	40°30'13.075"N	104°55'29.687"W	point
WINDER #10 LANDING POINT REV-2 (1980'FNL & 534'FEL, SEC.09)	7405.00	-1070.41	140.98	3169413.23	1426872.30	40°30'12.845"N	104°53'26.812"W	point
WINDER #10 BHL ON PLAT REV-1 (1789'FNL & 460'FWL, SEC.08)	7415.00	-1045.32	-9350.91	3159921.72	1426832.23	40°30'13.075"N	104°55'29.687"W	point
WINDER #10 LANDING POINT ON PLAT (1980'FNL & 460'FEL, SEC.09)	7415.00	-1070.39	214.98	3169487.22	1426872.83	40°30'12.845"N	104°53'25.854"W	point
WINDER #10 LANDING POINT REV-1 (1980'FNL & 534'FEL, SEC.09)	7415.00	-1070.41	140.98	3169413.23	1426872.30	40°30'12.845"N	104°53'26.812"W	point
TWELL/WINDER PAD CENTER SECTION HARDLINES(460'SETBACKS)	7419.00	-3100.01	-9582.77	3159703.97	1424776.07	40°29'52.771"N	104°55'32.678"W	polygon

## WELLPATH COMPOSITION - Ref Wellbore: WINDER #10 AWB Ref Wellpath: WINDER #10 AWP

Start MD [ft]	End MD [ft]	Positional Uncertainty Model	Log Name/Comment	Wellbore
0.00	1485.00	ISCWSA MWD, Rev. 4 (Standard)	HELMER DIRECTIONAL SURFACE SURVEYS <72 - 1485>	WINDER #10 AWB
1485.00	11031.00	ISCWSA MWD, Rev. 4 (Standard)	BHI DRILLED USING 3RD PARTY MWD 7 7/8" MONOBORE SURVEYS <1485 - 11031>	WINDER #10 AWB



## Actual Wellpath Report

WINDER #10 AWP  
Page 6 of 6



### REFERENCE WELLPATH IDENTIFICATION

Operator	EXTRACTION OIL & GAS	Slot	SLOT#10 WINDER #10 (910'FNL & 684'FEL, SEC.09)
Area	COLORADO	Well	WINDER #10
Field	WELD COUNTY (NAD83/TRUE NORTH)	Wellbore	WINDER #10 AWB
Facility	SEC.09-T06N-R67W		

### WELLPATH COMMENTS

MD [ft]	Inclination [°]	Azimuth [°]	TVD [ft]	Comment
1485.00	0.500	295.300	1484.95	TIED INTO HELMER DRILLING SURFACE SURVEYS
1650.00	0.860	316.980	1649.94	BHI DRILLED USING 3RD PARTY MWD - FIRST SURVEY
7890.00	77.804	271.819	7256.26	CROSSED SETBACK BOUNDARY (2304'FNL & 460'FEL, SEC.09)
8189.00	89.110	268.230	7304.12	LANDING POINT (2301'FNL & 783'FEL, SEC.09)
11031.00	93.310	266.950	7259.59	BHI DRILLED USING 3RD PARTY MWD - LAST SURVEY (2322'FNL & 3621'FEL, SEC.09)