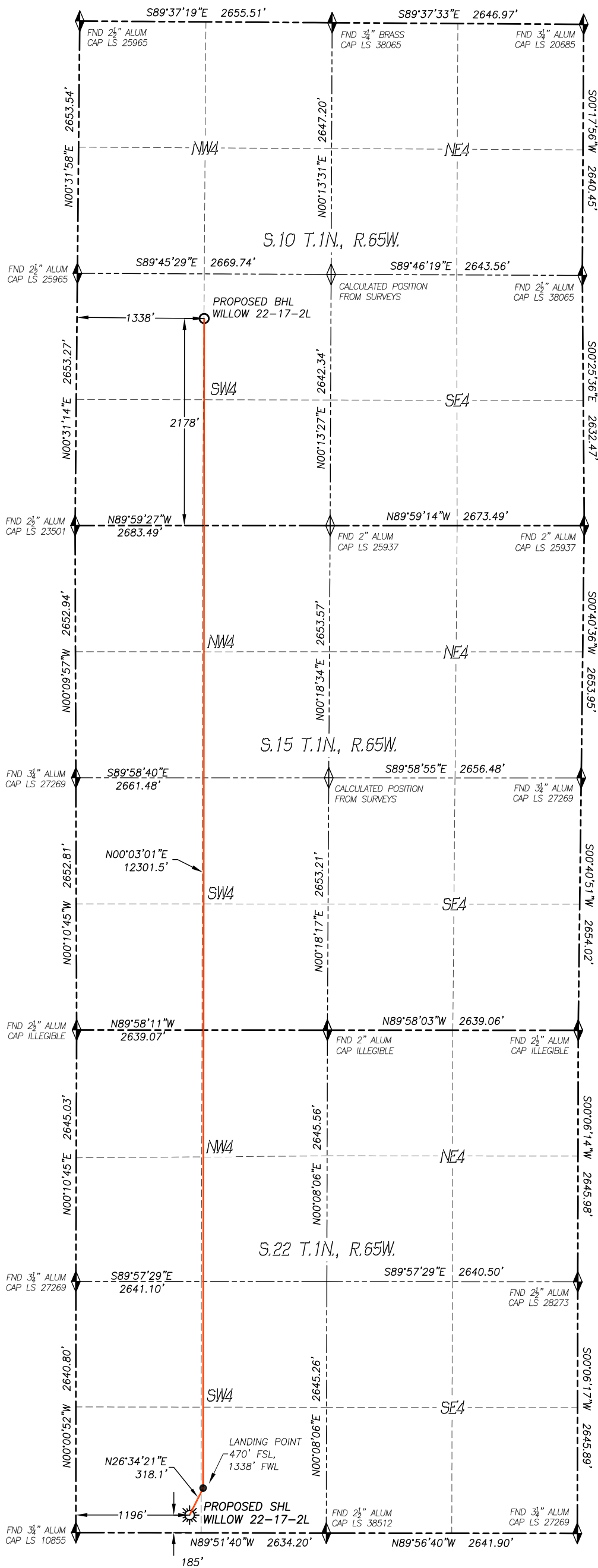


WELL LOCATION CERTIFICATE
WILLOW 22-17-2L

SECTION 22, TOWNSHIP 1 NORTH, RANGE 65 WEST
OF THE 6TH P.M., WELD COUNTY

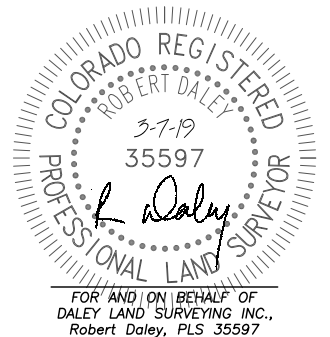


IN ACCORDANCE WITH A REQUEST FROM CONFLUENCE RESOURCES, DALEY LAND SURVEYING, INC. HAS DETERMINED THE SURFACE LOCATION OF THE WILLOW 22-17-2L WELL TO BE 185' FSL, 1196' FWL, AS MEASURED AT NINETY (90) DEGREES FROM THE SECTION LINES OF SECTION 22, TOWNSHIP 1 NORTH, RANGE 65 WEST, OF THE 6TH PRINCIPAL MERIDIAN, AND THE BOTTOM HOLE LOCATION TO BE 2178' FSL, 1338' FWL, AS MEASURED AT NINETY (90) DEGREES FROM THE SECTION LINES OF SECTION 10, TOWNSHIP 1 NORTH, RANGE 65 WEST, OF THE 6TH PRINCIPAL MERIDIAN, WELD COUNTY, COLORADO.

I HEREBY STATE THAT THIS WELL LOCATION CERTIFICATE WAS PREPARED BY ME OR UNDER MY DIRECT SUPERVISION, THAT THE WORK WAS COMPLETED ON 2/19/2019 FOR AND ON BEHALF OF CONFLUENCE RESOURCES, AND THAT THIS MAP DOES NOT REPRESENT A BOUNDARY SURVEY, IT IS NOT A LAND SURVEY PLAT OR AN IMPROVEMENT SURVEY PLAT AND IT IS NOT TO BE RELIED UPON FOR THE ESTABLISHMENT OF FENCE, BUILDING OR OTHER FUTURE IMPROVEMENT LINES.

NOTES:

- 1) BEARINGS FOR THIS MAP ARE ASSUMED AND BASED UPON GPS OBSERVATIONS MADE BETWEEN MONUMENTS LOCATED AT THE EAST QUARTER CORNER AND THE SOUTHEAST CORNER OF SECTION 22, T.1N., R.65W.
- 2) HORIZONTAL DATUM IS NAD83.
- 3) VERTICAL DATUM IS NAVD88 AND ORIGINATES FROM THE LOCAL C.O.R.S. NETWORK, UTILIZING THE GEOID12A MODEL.
- 4) SEE LOCATION DRAWING FOR VISIBLE IMPROVEMENTS WITHIN 500' OF PROPOSED DISTURBED AREA.
- 5) SURFACE USE: AGRICULTURAL.
- 6) INST. OPERATOR: KYLE DALEY



NAD 83 LATITUDE AND LONGITUDE

| SURFACE LOCATION: | | LANDING POINT/TPZ: | |
|-------------------|-------------|---------------------|-------------|
| LATITUDE: | N40.03017° | LATITUDE: | N40.03096° |
| LONGITUDE: | W104.65532° | LONGITUDE: | W104.65481° |
| ELEV: | 5091' | | |
| PDOP: | 1.5 | BOTTOM HOLE: | |
| QTR/QTR: | SW4/SW4 | LATITUDE: | N40.06472° |
| | | LONGITUDE: | W104.65476° |

NEAREST CULTURAL ITEMS:

| | |
|-----------------------------|-----------|
| BUILDING: | 1123'± NE |
| BUILDING UNIT: | 1434'± SW |
| HIGH OCC. BLD. UNIT: | 5280'+ |
| DES. OUTSIDE ACTIVITY AREA: | 5280'+ |
| PUBLIC ROAD: | 1632'± SW |
| ABOVE GROUND UTILITY: | 1593'± SW |
| RAILROAD: | 5280'+ |
| PROPERTY LINE: | 185'± S |
| SCHOOL FACILITY: | 5280'+ |
| SCHOOL PROPERTY LINE: | 5280'+ |
| CHILD CARE CENTER: | 5280'+ |

LEGEND

- FOUND MONUMENT
- CALCULATED POSITION
- PROPOSED WELL
- BOTTOM HOLE
- ABANDONED WELL
- EXISTING WELL

0 1200'

SCALE: 1" = 1200'

Confluence RESOURCES

DALEY LAND SURVEYING, INC.
PARKER, COLORADO
303.953.9841