

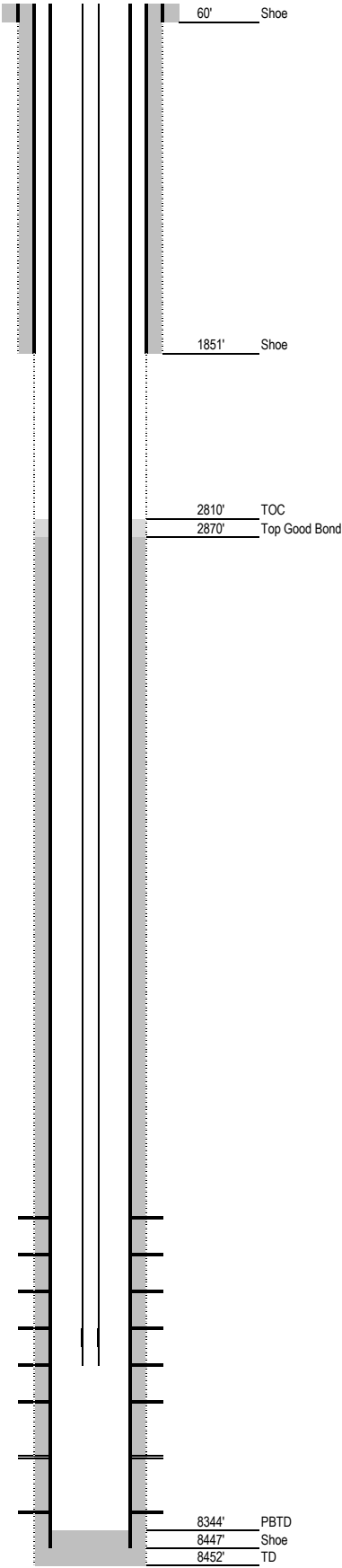
Laramie Energy

Current Wellbore Diagram

Not to Scale

FEDERAL WELL: YES ☐ NO ☒

Geological Tops	Depth
MV / Ohio Creek	5366'
Williams Fork	5620'
Top of Gas	6430'
Cameo	7900'
Rollins	8231'



Well Name	Vega Unit 34-12
API	05-077-09002-00
Pad	Vega 13
Surface Location	2592' FNL & 266' FEL SENE S33 T09S R93W 6PM
GPS Coordinates	39.233794 -107.765897
Bottom Hole Loc	1680' FNL & 328' FWL S34 T09S R93W 6PM
Field	Vega # 85930
County, State	Mesa, CO
Spud Date	4/12/2006
Completion Date	12/4/2006
Diagram Date	2/20/2019
KB Elevation	8206'
KB	21'
GL Elevation	8185'

Hole	24" @ 60'
Conductor	16" @ 60'
Cement	200 sx

Surface Hole	12.25" @ 1860'
Casing	8.625" 24# J55 @ 1851'
Cement	804 sx
TOC	SURFACE (calc)

Production Hole	7.875" @ 8447'
Casing	4.5" 11.6# N80 @ 8447'
Cement	1300 sx
TOC	2810'
Top Good Bond	2870'
CBL Date	"1 OCTOBER 2006" (COGCC Document # 1405639)

Tubing Head	7-1/16" 5K
--------------------	------------

Tubing	240 jts 2-3/8" 4.7# J55 EUE 8rd @ 7413', XN Nipple @ 7380'
---------------	--

Perforations Zone	Interval	Date	Status	Notes
Williams Fork	6569'-6790'	12/4/2006	Producing	Stg 8
Williams Fork	6856'-6943'	12/4/2006	Producing	Stg 7
Williams Fork	6976'-7112'	11/29/2006	Producing	Stg 6
Williams Fork	7182'-7321'	11/28/2006	Producing	Stg 5
Williams Fork	7364'-7534'	11/27/2006	Producing	Stg 4
Williams Fork	7589'-7816'	11/22/2006	Producing	Stg 3
Cameo	7924'-8128'	11/22/2006	Producing	Stg 2
Rollins	8235'-8262'	11/21/2006	Producing	Stg 1

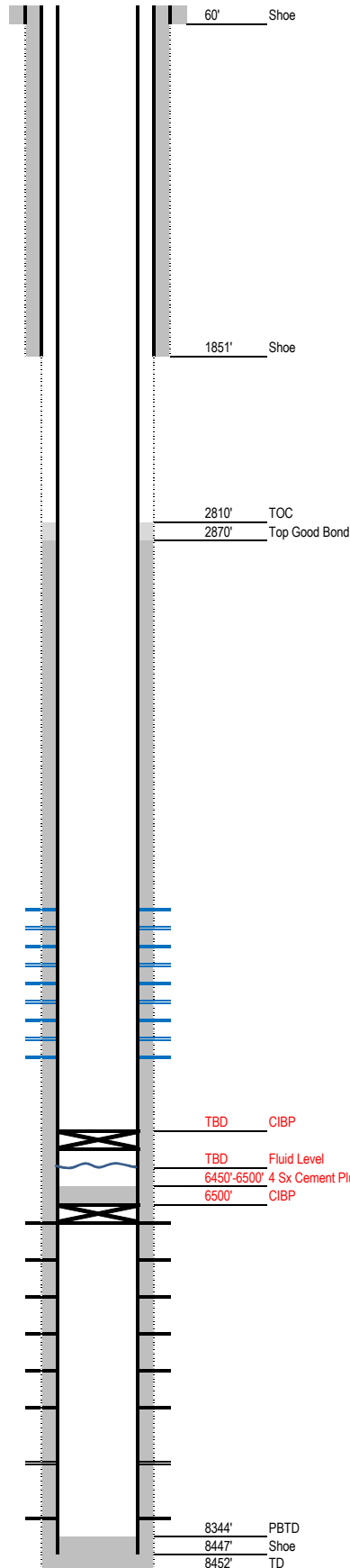
Laramie Energy

Proposed SWD Test Wellbore Diagram

Not to Scale

FEDERAL WELL: YES ☐ NO ☒

Geological Tops	Depth
MV / Ohio Creek	5366'
Williams Fork	5620'
Top of Gas	6430'
Cameo	7900'
Rollins	8231'



Well Name Vega Unit 34-12
API 05-077-09002-00
Pad Vega 13
Surface Location 2592' FNL & 266' FEL SENE S33 T09S R93W 6PM
GPS Coordinates 39.233794 -107.765897
Bottom Hole Loc 1680' FNL & 328' FWL S34 T09S R93W 6PM
Field Vega # 85930
County, State Mesa, CO
Spud Date 4/12/2006
Completion Date 12/4/2006
Diagram Date 2/20/2019
KB Elevation 8206'
KB 21'
GL Elevation 8185'

Hole 24" @ 60'
Conductor 16" @ 60'
Cement 200 sx

Surface Hole 12.25" @ 1860'
Casing 8.625" 24# J55 @ 1851'
Cement 804 sx
TOC SURFACE (calc)

Production Hole 7.875" @ 8447"
Casing 4.5" 11.6# N80 @ 8447"
Cement 1300 sx
TOC 2810'
Top Good Bond 2870'
CBL Date "1 OCTOBER 2006" (COGCC Document # 1405639)

Tubing Head 7-1/16" 5K

Tubing None

Perforations Zone	Interval	Date	Status	Notes
Wasatch	5170'-5185'		Proposed	15'
Wasatch	5190'-5228'		Proposed	38'
Wasatch	5235'-5255'		Proposed	20'
Wasatch	5286'-5304'		Proposed	18'
Ohio Creek	5377'-5443'		Proposed	66'
Ohio Creek	5450'-5462'		Proposed	12'
Ohio Creek	5480'-5510'		Proposed	30'
Ohio Creek	5586'-5596'		Proposed	10'
Ohio Creek	5605'-5620'		Proposed	15'
Williams Fork	6569'-6790'	12/4/2006	P&A	Stg 8
Williams Fork	6856'-6943'	12/4/2006	P&A	Stg 7
Williams Fork	6976'-7112'	11/29/2006	P&A	Stg 6
Williams Fork	7182'-7321'	11/28/2006	P&A	Stg 5
Williams Fork	7364'-7534'	11/27/2006	P&A	Stg 4
Williams Fork	7589'-7816'	11/22/2006	P&A	Stg 3
Cameo	7924'-8128'	11/22/2006	P&A	Stg 2
Rollins	8235'-8262'	11/21/2006	P&A	Stg 1