

EBC 2
Proposed Lateral WBD
DRAWING NOT TO SCALE

State: Colorado
County: Archuleta
API:
GL: 6930'
KB: 6946'

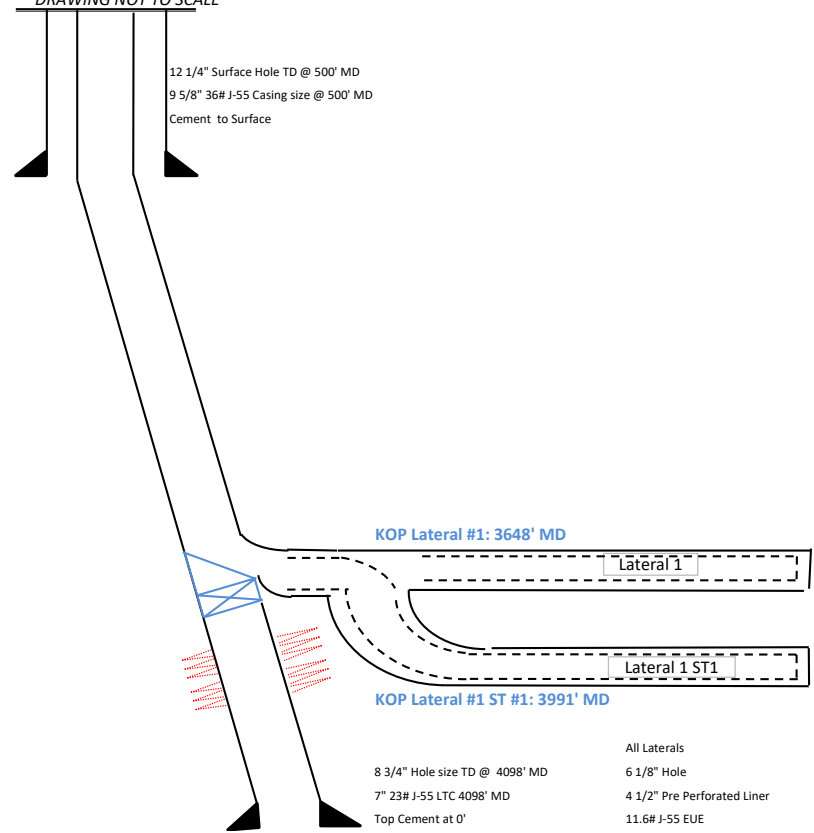
12 1/4" Surface Hole TD @ 500' MD
9 5/8" 36# J-55 Casing size @ 500' MD
Cement to Surface

Estimated Fm. Tops

	MD	TVD
Animas	16	16
Kirtland	2796	2305
Farmington	2931	2396
Lower Kirtland	3349	2676
Fruitland	3775	2961
Pictured Cliffs	3885	3039

Estimated Perforations (MD)

Top-	Bottom
3775	3885



8 3/4" Hole size TD @ 4098' MD
7" 23# J-55 LTC 4098" MD
Top Cement at 0'

All Laterals
6 1/8" Hole
4 1/2" Pre Perforated Liner
11.6# J-55 EUE

							Total Depth						
Well/Lateral Name	Top of Window	Base Of Window	Bridge Plug	KOP Method	KOP (MD)	KOP (TVD)	Top of Production	TD (MD)	TD (TVD)	Liner Bottom	Liner Top	Proposed BHL	Notes
Pilot Hole				Open Hole	520	520	691' FSL & 370' FWL S21 T34N R5W	4098	3219	4098	0	856' FSL & 253' FWL S21 T34N R5W	
Lateral #1	3641	3650	3666	Whip stock	3648	2876	691' FSL & 370' FWL S21 T34N R5W	13040	3235	13035	4041	1910' FNL & 2605' FWL S19 T34N R5W	
Lateral #1 St #1				Open Hole Sidetrack	3991	2980	691' FSL & 370' FWL S21 T34N R5W	12789	3219	12784	3658	660' FNL & 1335' FEL S19 T34N R5W	Lateral #1 ST#1 is an open hole sidetrack off of Lateral #1

Notes: Set Retrievable Bridge Plug at +/- 1500' After drilling last lateral for Isolation
Due to Formation Dip, Tops in the pilot hole will not always match TVD of the entire lateral