

CATAMOUNT ENERGY PARTNERS: EBC #1

SURFACE LOCATION: 947' FNL & 1504' FWL

SECTION 28, T-34-N, R-5-W, S.U.L., N.M.P.M., ARCHULETA COUNTY, COLORADO. GROUND LEVEL ELEVATION: 6930.6'

PILOT HOLE BOTTOM HOLE LOCATION: 114' FSL, 414' FEL

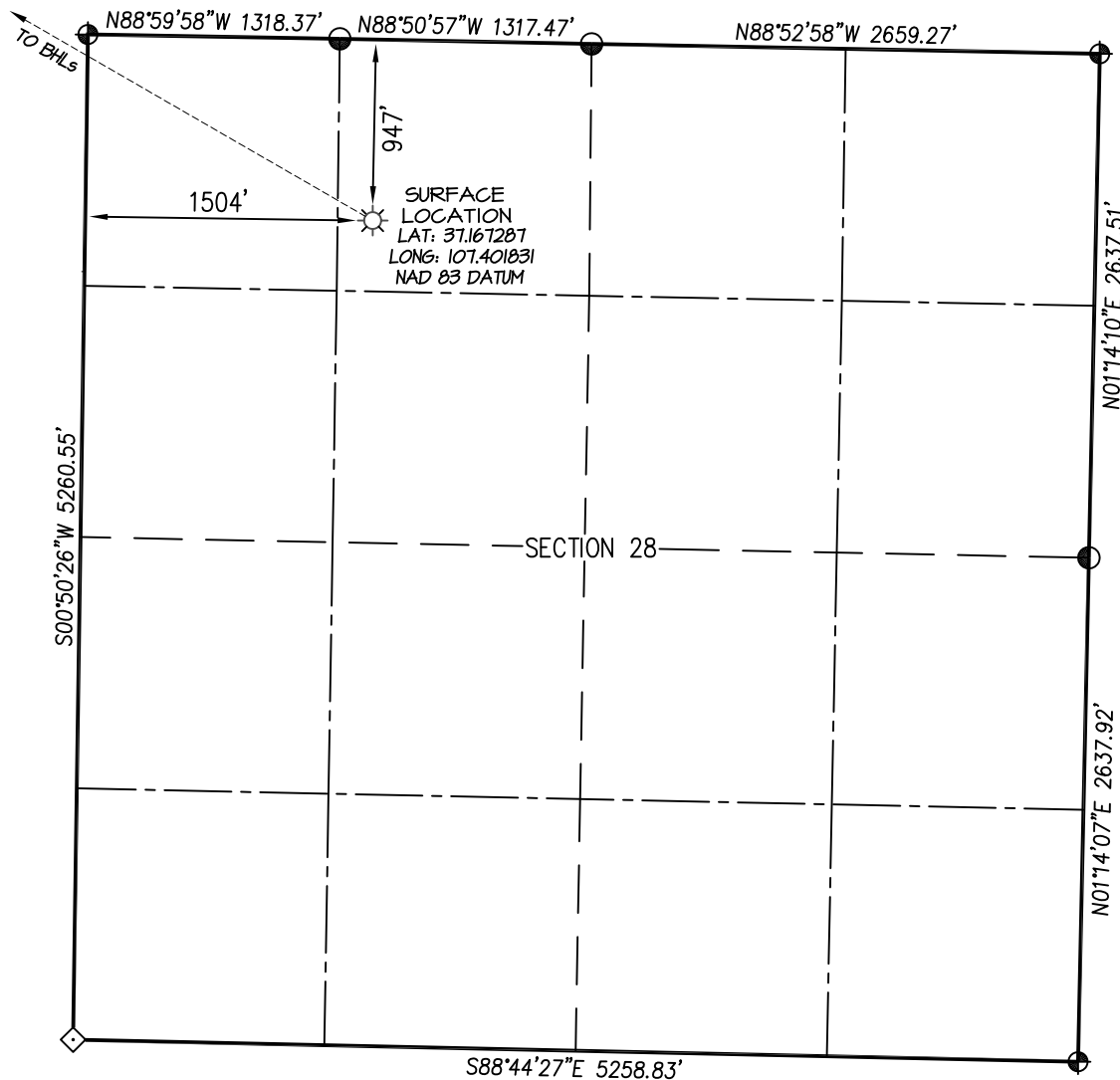
SECTION 20, T-34-N, R-5-W, S.U.L., N.M.P.M., ARCHULETA COUNTY, COLORADO.

LATERAL #1 BOTTOM HOLE LOCATION: 726' FSL, 680' FWL

SECTION 19, T-34-N, R-5-W, S.U.L., N.M.P.M., ARCHULETA COUNTY, COLORADO.

LATERAL #1 ST1 BOTTOM HOLE LOCATION: 2016' FSL, 671' FWL

SECTION 19, T-34-N, R-5-W, S.U.L., N.M.P.M., ARCHULETA COUNTY, COLORADO.



- ⊕ and ⊙ denote found 3-1/4" B.L.M. aluminum cap.
- ◇ denotes single proportion calculated position

NOTE:

SEE SHEET 5 OF 5 FOR COORDINATE TABLE,
SURVEY NOTES, AND SURVEYOR'S CERTIFICATE.

SHEET 1 OF 5

DRAWN BY: K.R.	SURVEYED: 11/16/18	PREPARED FOR:	
		CATAMOUNT ENERGY PARTNERS	
CHECKED BY: K.R.	DRAWN: 1/12/19	NORTHSTAR SURVEYING & MAPPING, INC. 768 County Rd. 308 DURANGO, CO. 81303 (970) 385-0851	
FILE NO.: CEP-43WP	JOB NO.: CEP-43		

CATAMOUNT ENERGY PARTNERS: EBC #1

SURFACE LOCATION: 947' FNL & 1504' FWL

SECTION 28, T-34-N, R-5-W, S.U.L., N.M.P.M., ARCHULETA COUNTY, COLORADO. GROUND LEVEL ELEVATION: 6930.6'

PILOT HOLE BOTTOM HOLE LOCATION: 114' FSL, 414' FEL

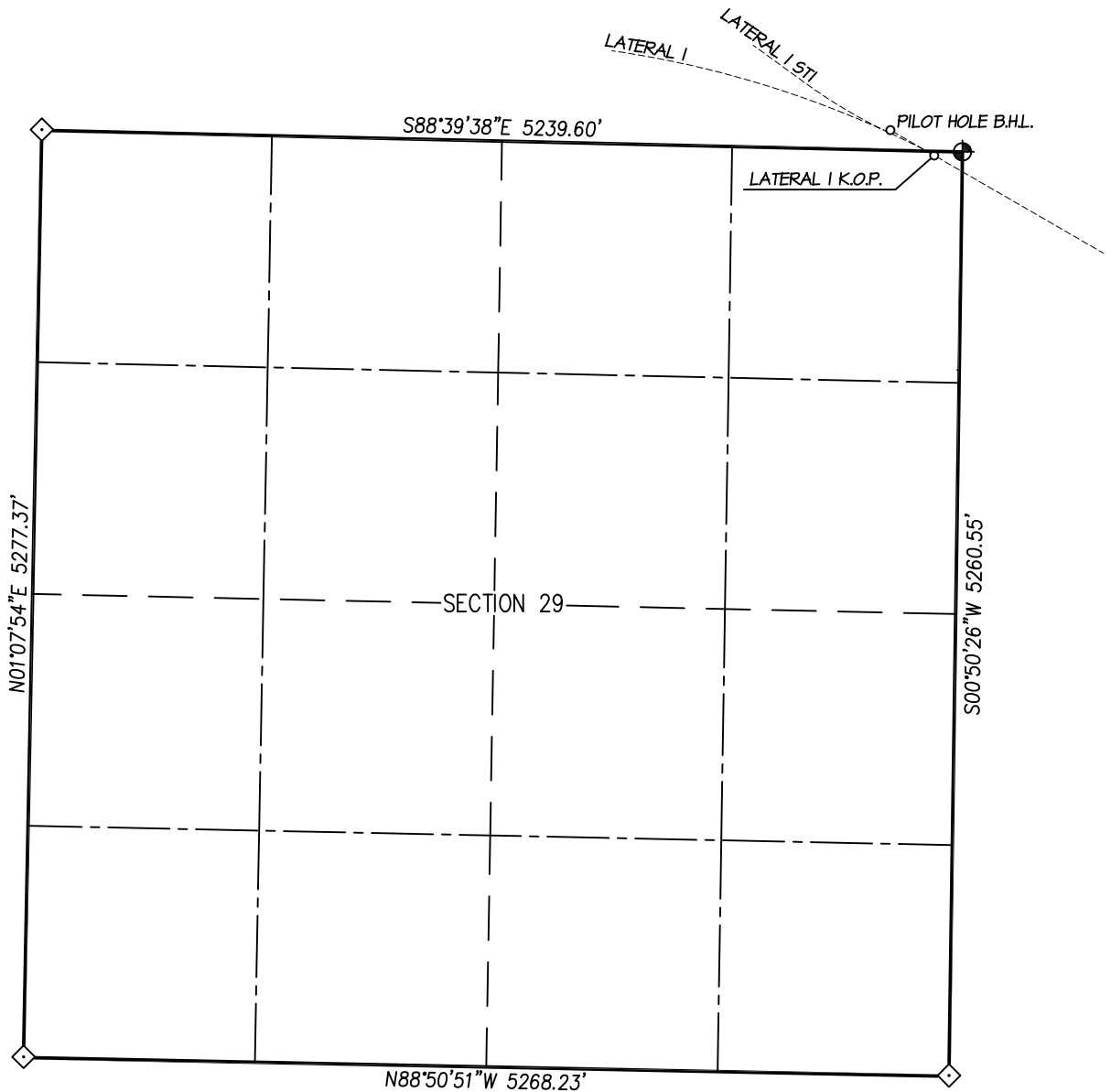
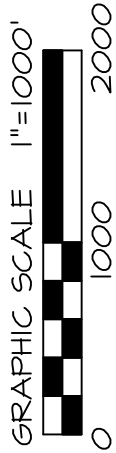
SECTION 20, T-34-N, R-5-W, S.U.L., N.M.P.M., ARCHULETA COUNTY, COLORADO.

LATERAL #1 BOTTOM HOLE LOCATION: 726' FSL, 680' FWL

SECTION 19, T-34-N, R-5-W, S.U.L., N.M.P.M., ARCHULETA COUNTY, COLORADO.

LATERAL #1 ST1 BOTTOM HOLE LOCATION: 2016' FSL, 671' FWL

SECTION 19, T-34-N, R-5-W, S.U.L., N.M.P.M., ARCHULETA COUNTY, COLORADO.



- ⊕ and ⊙ denote found 3-1/4" B.L.M. aluminum cap.
◇ denotes single proportion calculated position

NOTE:

SEE SHEET 5 OF 5 FOR COORDINATE TABLE,
SURVEY NOTES, AND SURVEYOR'S CERTIFICATE.

SHEET 2 OF 5

DRAWN BY: K.R.	SURVEYED: 11/16/18	DRAWN: 1/12/19	PREPARED FOR:	
			CATAMOUNT ENERGY PARTNERS	
CHECKED BY: K.R.	FILE NO.: CEP-43WP	JOB NO. CEP-43	NORTHSTAR SURVEYING & MAPPING, INC.	
			768 County Rd. 308 DURANGO, CO. 81303 (970) 385-0851	

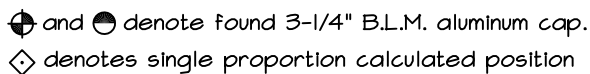
SURFACE LOCATION: 947' FNL & 1504' FWL

PILOT HOLE BOTTOM HOLE LOCATION: 114' FSL, 414' FEL

LATERAL #1 BOTTOM HOLE LOCATION: 726' FSL, 680' FWL

LATERAL #1 ST1 BOTTOM HOLE LOCATION: 2016' FSL, 671' FWL

SECTION 19, T-34-N, R-5-W, S.U.L., N.M.P.M., ARCHULETA COUNTY, COLORADO.



SEE SHEET 5 OF 5 FOR COORDINATE TABLE,
SURVEY NOTES, AND SURVEYOR'S CERTIFICATE.

768 County Rd. 308
DURANGO, CO. 81303
(970) 385-0851

DRAWN BY: K.R.	SURVEYED: 11/16/18
CHECKED BY: K.R.	DRAWN: 1/12/19
FILE NO.: CEP43WP	JOB NO. CEP43

CATAMOUNT ENERGY PARTNERS: EBC #1

SURFACE LOCATION: 947' FNL & 1504' FWL

SECTION 28, T-34-N, R-5-W, S.U.L., N.M.P.M., ARCHULETA COUNTY, COLORADO. GROUND LEVEL ELEVATION: 6930.6'

PILOT HOLE BOTTOM HOLE LOCATION: 114' FSL, 414' FEL

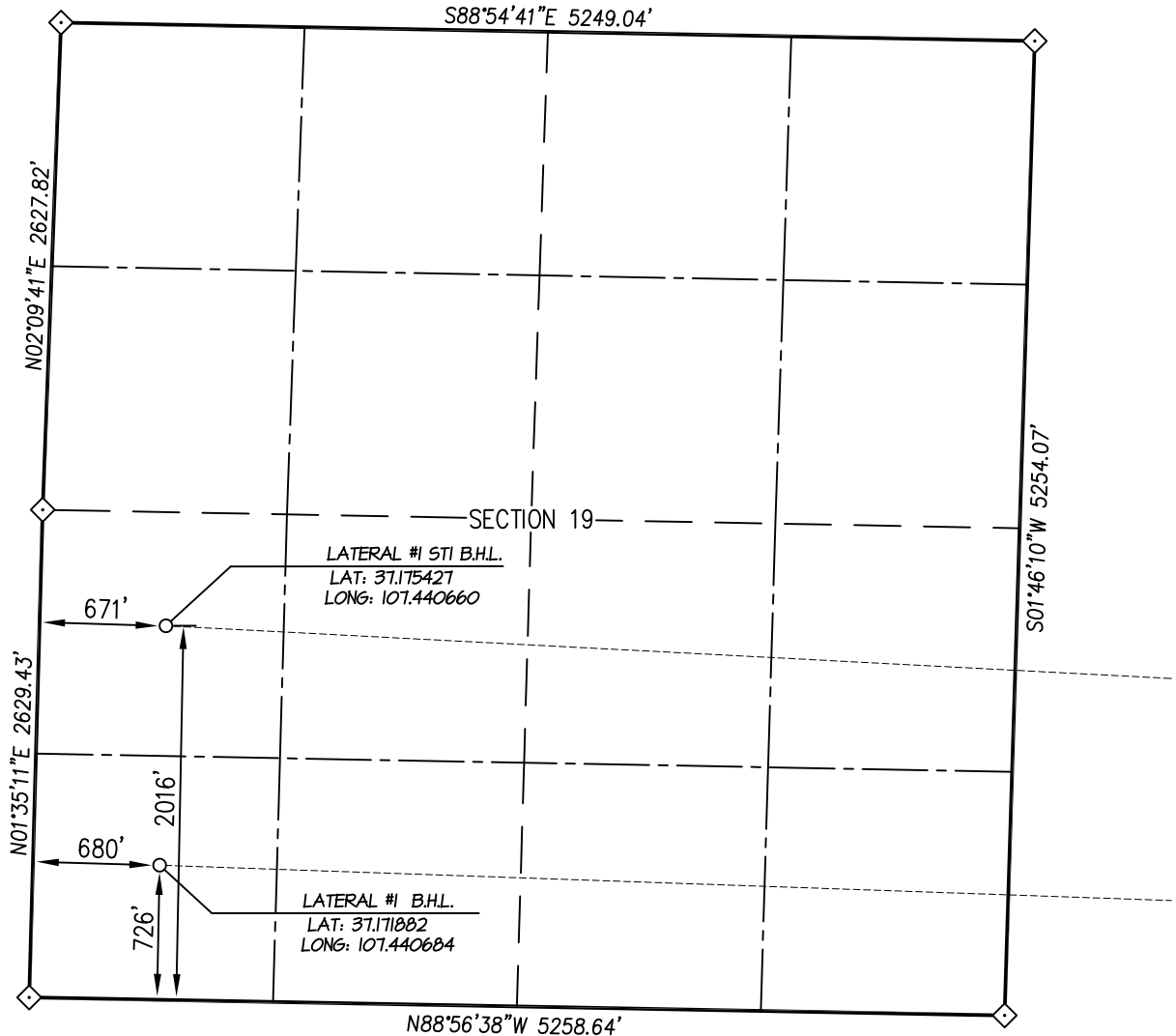
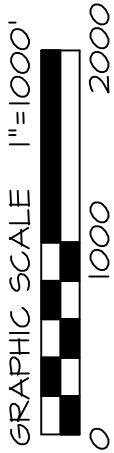
SECTION 20, T-34-N, R-5-W, S.U.L., N.M.P.M., ARCHULETA COUNTY, COLORADO.

LATERAL #1 BOTTOM HOLE LOCATION: 726' FSL, 680' FWL

SECTION 19, T-34-N, R-5-W, S.U.L., N.M.P.M., ARCHULETA COUNTY, COLORADO.

LATERAL #1 ST1 BOTTOM HOLE LOCATION: 2016' FSL, 671' FWL

SECTION 19, T-34-N, R-5-W, S.U.L., N.M.P.M., ARCHULETA COUNTY, COLORADO.



- ⊕ and ⊙ denote found 3-1/4" B.L.M. aluminum cap.
◇ denotes single proportion calculated position

NOTE:

SEE SHEET 5 OF 5 FOR COORDINATE TABLE,
SURVEY NOTES, AND SURVEYOR'S CERTIFICATE.

SHEET 4 OF 5

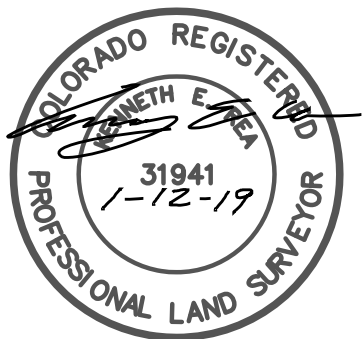
DRAWN BY: K.R.	SURVEYED: 11/16/18	DRAWN: 1/12/19	PREPARED FOR:	
			CATAMOUNT ENERGY PARTNERS	
CHECKED BY: K.R.	FILE NO.: CEP43WP	JOB NO.: CEP43	<div>NORTHSTAR SURVEYING & MAPPING, INC.</div> <div>768 County Rd. 308 DURANGO, CO. 81303 (970) 385-0851</div>	

CATAMOUNT ENERGY PARTNERS: EBC #1**SURFACE LOCATION: 947' FNL & 1504' FWL****SECTION 28, T-34-N, R-5-W, S.U.L., N.M.P.M., ARCHULETA COUNTY, COLORADO. GROUND LEVEL ELEVATION: 6930.6'****PILOT HOLE BOTTOM HOLE LOCATION: 114' FSL, 414' FEL****SECTION 20, T-34-N, R-5-W, S.U.L., N.M.P.M., ARCHULETA COUNTY, COLORADO.****LATERAL #1 BOTTOM HOLE LOCATION: 726' FSL, 680' FWL****SECTION 19, T-34-N, R-5-W, S.U.L., N.M.P.M., ARCHULETA COUNTY, COLORADO.****LATERAL #1 ST1 BOTTOM HOLE LOCATION: 2016' FSL, 671' FWL****SECTION 19, T-34-N, R-5-W, S.U.L., N.M.P.M., ARCHULETA COUNTY, COLORADO.**

EBC 1	CSZ NAD '83	NAD '83	TIES	SEC/TWP/RNG
SURFACE HOLE LOCATION	N (Y) = 1,187,928.04' E (X) = 2,445,853.98'	LAT: 37.167287°N LONG: 107.401831°W	FNL = 947' FWL = 1504'	SECTION 28 T-34-N, R-5-W
TOP OF PRODUCTION	N (Y) = 1,188,928.04' E (X) = 2,444,121.98'	LAT: 37.169936°N LONG: 107.407844°W	FSL = 21' FEL = 243'	SECTION 20 T-34-N, R-5-W
PILOT HOLE - BOTTOM HOLE LOCATION	N (Y) = 1,189,025.37' E (X) = 2,443,953.41'	LAT: 37.170194°N LONG: 107.408429°W	FSL = 114' FEL = 414'	SECTION 20 T-34-N, R-5-W
LATERAL #1 K.O.P.	N (Y) = 1,188,881.04' E (X) = 2,444,202.98'	LAT: 37.169811°N LONG: 107.407563°W	FNL = 25' FEL = 161'	SECTION 29 T-34-N, R-5-W
PROPOSED BOTTOM HOLE LOCATION LATERAL #1	N (Y) = 1,189,833.79' E (X) = 2,434,569.49'	LAT: 37.171882°N LONG: 107.440684°W	FSL = 726' FWL = 680'	SECTION 19 T-34-N, R-5-W
LATERAL #1 ST1 K.O.P.	N (Y) = 1,189,006.04' E (X) = 2,443,956.98'	LAT: 37.170141°N LONG: 107.408415°W	FSL = 95' FEL = 409'	SECTION 20 T-34-N, R-5-W
PROPOSED BOTTOM HOLE LOCATION LATERAL #1 ST1	N (Y) = 1,191,124.11' E (X) = 2,434,603.38'	LAT: 37.175427°N LONG: 107.440660°W	FSL = 2016' FWL = 671'	SECTION 19 T-34-N, R-5-W

NOTES:

1. WELL LOCATION FOOTAGE CALLS MEASURED PERPENDICULAR TO SECTION LINES.
2. WELL GPS OBSERVATION PERFORMED BY NELSON ROSS ON 11/16/18 - PDOP VALUE = 2.06
3. BEARINGS & DISTANCE SHOWN ARE FIELD MEASURED UNLESS OTHERWISE NOTED.
4. ALL MEASURED DISTANCES SHOWN ARE GRID DISTANCE WITH NO SCALE FACTOR APPLIED.
5. BEARINGS ARE BASED ON THE NORTH AMERICAN DATUM OF 1983, COLORADO SOUTH STATE PLANE COORDINATE SYSTEM, ZONE 0503.
6. ELEVATION IS BASED ON THE NORTH AMERICAN VERTICAL DATUM OF 1988 (GEOID12A).



I, KENNETH E. REA, A REGISTERED PROFESSIONAL LAND SURVEYOR IN THE STATE OF COLORADO, DO HEREBY CERTIFY THAT THE WELL LOCATION SHOWN ON THIS PLAT IS ACCURATELY PLOTTED FROM FIELD NOTES OF ACTUAL SURVEYS MADE UNDER MY DIRECT SUPERVISION, AND THAT THIS PLAT IS NOT A LAND SURVEY PLAT OR IMPROVEMENT SURVEY PLAT, AND THAT IT IS NOT TO BE RELIED UPON FOR THE ESTABLISHMENT OF FENCE, BUILDING, OR OTHER FUTURE IMPROVEMENT LINES.

SHEET 5 OF 5

DRAWN BY: K.R.	CHECKED BY: K.R.	FILE NO.: CEP-43WP	JOB NO.	PREPARED FOR:
				CATAMOUNT ENERGY PARTNERS
NORTHSTAR SURVEYING & MAPPING, INC. 768 County Rd. 308 DURANGO, CO. 81303 (970) 385-0851				