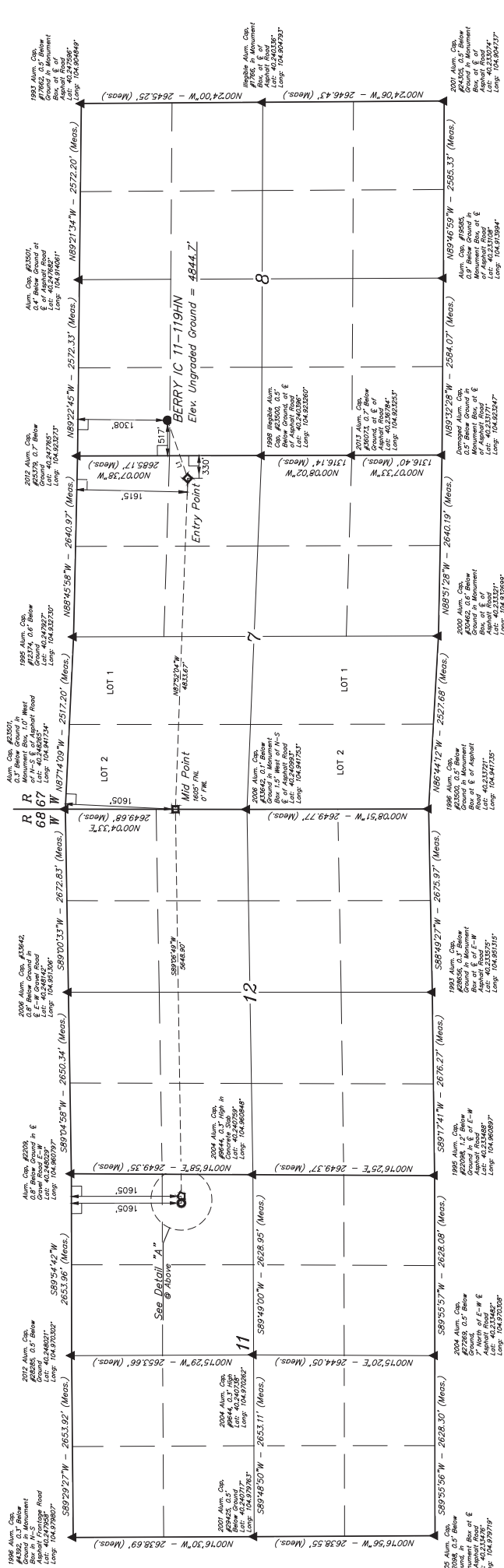
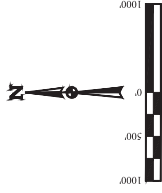
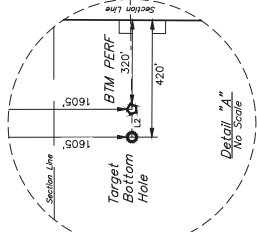


GREAT WESTERN OPERATING COMPANY
BERRY IC 11-119HN
SW 1/4 NW 1/4, SECTION 8, T3N, R67W, 6th P.M.
WELD COUNTY, COLORADO

TRANSVERSE MERCATOR PROJECTION WITH A CENTRAL MERIDIAN OF $W 105^{\circ}00'00''$.

LINE TABLE		
LINE	DIRECTION	LENGTH
L1	S70°49'40"W	896.54'
L2	S89°54'42"W	100.00'

[illegible]