

Great Western Operating Company, LLC

Location	Colorado	Slot	N15 - Berry IC 11-199HC
Field	Wattenburg	Well	Berry IC 11-199HC
Installation	Berry	Wellbore	Berry IC 11-199HC (PWB)

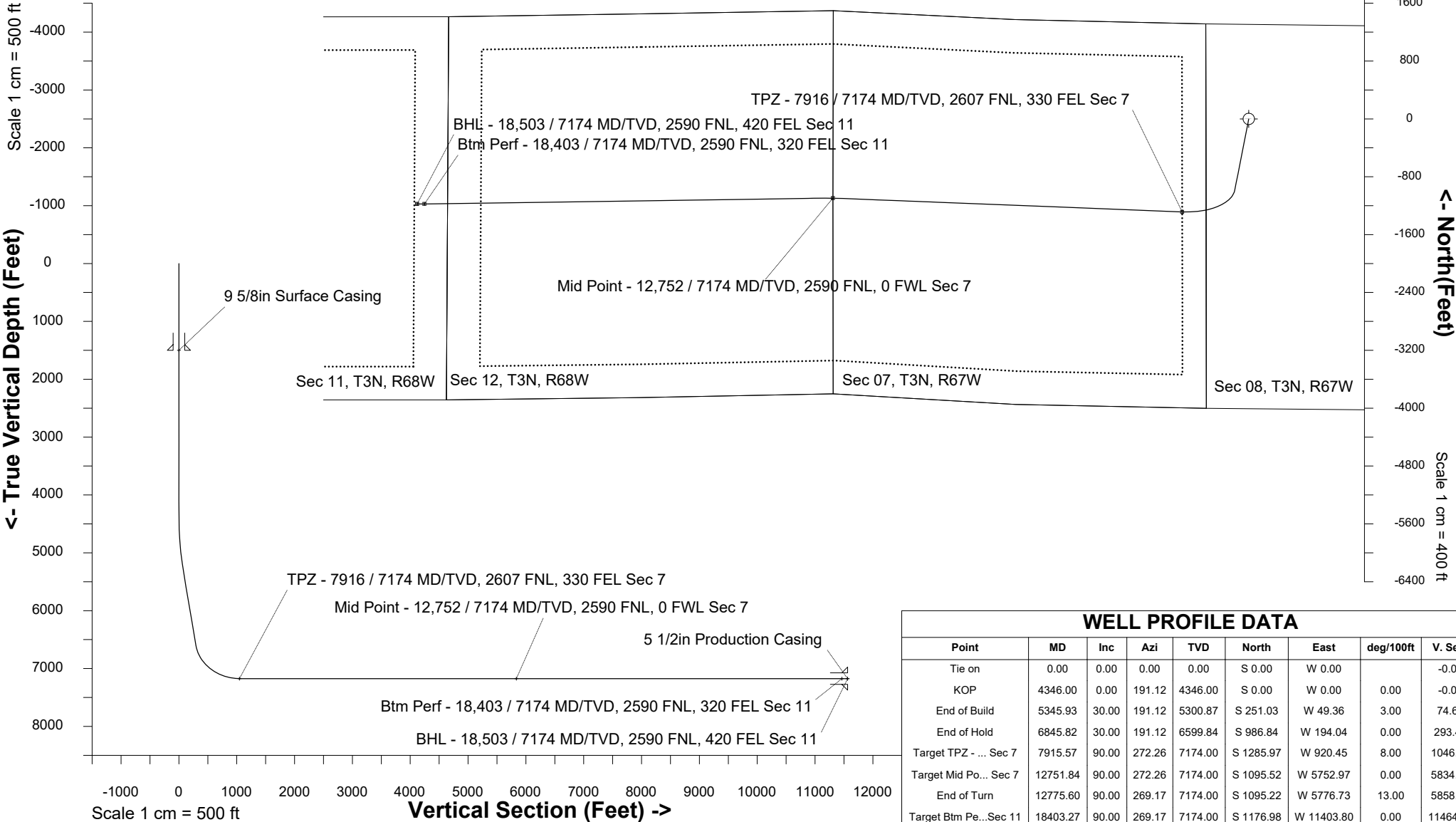
Created by	admin
Date plotted	16-Mar-2019
Plot reference is Berry IC 11-199HC (PWB).	
Ref wellpath is Berry IC 11-199HC (PWP#1).	
Coordinates are in Feet reference N15 - Berry IC 11-199HC.	
True Vertical Depths are reference Rig Datum.	
Measured Depths are reference Rig Datum.	
Rig Datum: Planned Datum #1	
Rig Datum to Mean Sea Level: 4863.60 ft.	
Plot North is aligned to TRUE North.	

Scale 1 cm = 400 ft

East (Feet) ->

-12800 -12000 -11200 -10400 -9600 -8800 -8000 -7200 -6400 -5600 -4800 -4000 -3200 -2400 -1600 -800 0 800 1600

Scale 1 cm = 500 ft



WELL PROFILE DATA

Point	MD	Inc	Azi	TVD	North	East	deg/100ft	V. Sect
Tie on	0.00	0.00	0.00	0.00	S 0.00	W 0.00		-0.00
KOP	4346.00	0.00	191.12	4346.00	S 0.00	W 0.00	0.00	-0.00
End of Build	5345.93	30.00	191.12	5300.87	S 251.03	W 49.36	3.00	74.65
End of Hold	6845.82	30.00	191.12	6599.84	S 986.84	W 194.04	0.00	293.47
Target TPZ - ... Sec 7	7915.57	90.00	272.26	7174.00	S 1285.97	W 920.45	8.00	1046.55
Target Mid Po... Sec 7	12751.84	90.00	272.26	7174.00	S 1095.52	W 5752.97	0.00	5834.60
End of Turn	12775.60	90.00	269.17	7174.00	S 1095.22	W 5776.73	13.00	5858.20
Target Btm Pe... Sec 11	18403.27	90.00	269.17	7174.00	S 1176.98	W 11403.80	0.00	11464.37
End of Turn	18410.11	90.00	270.06	7174.00	S 1177.03	W 11410.64	13.00	11471.18
T.D. & Target BHL... 11	18503.21	90.00	270.06	7174.00	S 1176.94	W 11503.75	0.00	11563.79

Azimuth 264.16 with reference 0.00 N, 0.00 E from N15 - Berry IC 11-199HC