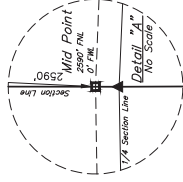
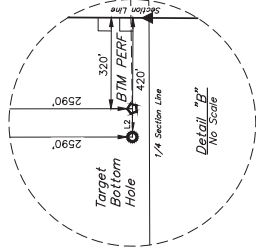


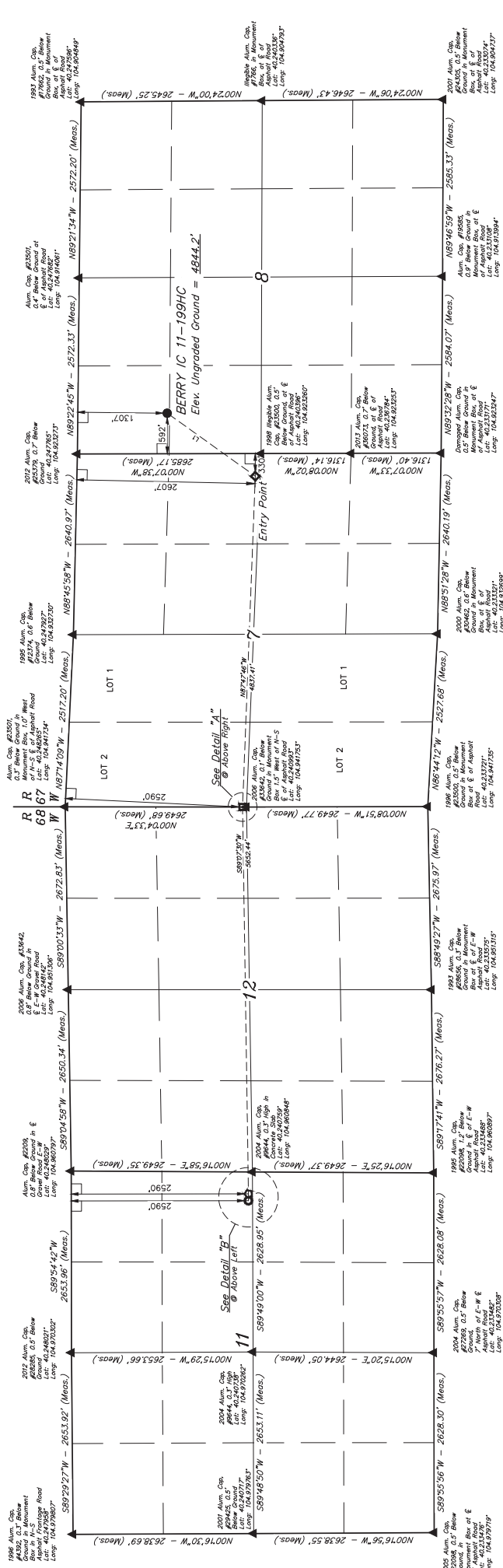
T3N, R67W, 6th P.M.

GREAT WESTERN OPERATING COMPANY  
BERRY IC 11-199HC  
SW 1/4 NW 1/4, SECTION 8, T3N, R67W, 6th P.M.  
WELD COUNTY, COLORADO

BASIS OF BEARINGS  
TRANSVERSE MERCATOR PROJECTION WITH A CENTRAL MERIDIAN OF W 105° 00' 00"  
BASIS OF ELEVATION  
OPUS SOLUTION GENERATED NAVD 88



LINE TABLE	
LINE	DIRECTION LENGTH
L1	S30°32'59"W 1581.69'
L2	S89°54'42"W 100.00'



REV: 3 03/07/19 K.B. (SHE MOVE)

POP = 1.3

NAID (SURFACE LOCATION)	NAID (MID-POINT)	NAID (ENTRANCE POINT)	NAID (RANGE 1 BOTTOM HOLE)
11-199HC	11-199HD	11-199HE	11-199HF
11-199HG	11-199HH	11-199HI	11-199HJ
11-199HK	11-199HL	11-199HM	11-199HN
11-199HO	11-199HP	11-199HQ	11-199HR
11-199HS	11-199HT	11-199HU	11-199HV
11-199HW	11-199HX	11-199HY	11-199HZ
11-199IA	11-199IB	11-199IC	11-199ID
11-199IE	11-199IF	11-199IG	11-199IH
11-199II	11-199IJ	11-199IK	11-199IL
11-199IM	11-199IN	11-199IO	11-199IP
11-199IQ	11-199IR	11-199IS	11-199IT
11-199IU	11-199IV	11-199IW	11-199IX
11-199IY	11-199IZ	11-199JA	11-199JB
11-199JC	11-199JD	11-199JE	11-199JF
11-199JG	11-199JH	11-199JI	11-199JJ
11-199JK	11-199JL	11-199JM	11-199JN
11-199JO	11-199JP	11-199JQ	11-199JR
11-199JS	11-199JT	11-199JU	11-199JV
11-199JW	11-199JX	11-199JY	11-199JZ
11-199KA	11-199KB	11-199KC	11-199KD
11-199KE	11-199KF	11-199KG	11-199KH
11-199KI	11-199KJ	11-199KK	11-199KL
11-199KM	11-199KN	11-199KO	11-199KP
11-199KQ	11-199KR	11-199KS	11-199KT
11-199KU	11-199KV	11-199KW	11-199KX
11-199KY	11-199KZ	11-199LA	11-199LB
11-199LC	11-199LD	11-199LE	11-199LF
11-199LG	11-199LH	11-199LI	11-199LJ
11-199LK	11-199LL	11-199LM	11-199LN
11-199LO	11-199LP	11-199LQ	11-199LR
11-199LS	11-199LT	11-199LU	11-199LV
11-199LW	11-199LX	11-199LY	11-199LZ
11-199MA	11-199MB	11-199MC	11-199MD
11-199ME	11-199MF	11-199MG	11-199MH
11-199MI	11-199MJ	11-199MK	11-199ML
11-199MN	11-199MO	11-199MP	11-199MQ
11-199MR	11-199MS	11-199MT	11-199MU
11-199MV	11-199MW	11-199MX	11-199MY
11-199MZ	11-199NA	11-199NB	11-199NC
11-199ND	11-199NE	11-199NF	11-199NG
11-199NH	11-199NI	11-199NJ	11-199NK
11-199NL	11-199NM	11-199NN	11-199NO
11-199NP	11-199NQ	11-199NR	11-199NS
11-199NT	11-199NU	11-199NV	11-199NW
11-199NX	11-199NY	11-199NZ	11-199OA
11-199OB	11-199OC	11-199OD	11-199OE
11-199OF	11-199OG	11-199OH	11-199OI
11-199OJ	11-199OK	11-199OL	11-199OM
11-199ON	11-199OO	11-199OP	11-199OQ
11-199OR	11-199OS	11-199OT	11-199OU
11-199OV	11-199OW	11-199OX	11-199OY
11-199OZ	11-199PA	11-199PB	11-199PC
11-199PD	11-199PE	11-199PF	11-199PG
11-199PH	11-199PI	11-199PJ	11-199PK
11-199PL	11-199PM	11-199PN	11-199PO
11-199PP	11-199PQ	11-199PR	11-199PS
11-199PT	11-199PU	11-199PV	11-199PW
11-199PX	11-199PY	11-199PZ	11-199QA
11-199QB	11-199QC	11-199QD	11-199QE
11-199QF	11-199QG	11-199QH	11-199QI
11-199QJ	11-199QK	11-199QL	11-199QM
11-199QN	11-199QO	11-199QP	11-199QQ
11-199QR	11-199QS	11-199QT	11-199QU
11-199QV	11-199QW	11-199QX	11-199QY
11-199QZ	11-199RA	11-199RB	11-199RC
11-199RD	11-199RE	11-199RF	11-199RG
11-199RH	11-199RI	11-199RJ	11-199RK
11-199RL	11-199RM	11-199RN	11-199RO
11-199RP	11-199RQ	11-199RS	11-199RT
11-199RU	11-199RV	11-199RW	11-199RX
11-199RY	11-199RZ	11-199SA	11-199SB
11-199SC	11-199SD	11-199SE	11-199SF
11-199SG	11-199SH	11-199SI	11-199SJ
11-199SK	11-199SL	11-199SM	11-199SN
11-199SO	11-199SP	11-199SQ	11-199SR
11-199SS	11-199ST	11-199SU	11-199SV
11-199SW	11-199SX	11-199SY	11-199SZ
11-199TA	11-199TB	11-199TC	11-199TD
11-199TE	11-199TF	11-199TG	11-199TH
11-199TI	11-199TJ	11-199TK	11-199TL
11-199TM	11-199TN	11-199TO	11-199TP
11-199TQ	11-199TR	11-199TS	11-199TT
11-199TU	11-199TV	11-199TW	11-199TX
11-199TY	11-199TZ	11-199UA	11-199UB
11-199UC	11-199UD	11-199UE	11-199UF
11-199UG	11-199UH	11-199UI	11-199UJ
11-199UK	11-199UL	11-199UM	11-199UN
11-199UO	11-199UP	11-199UQ	11-199UR
11-199US	11-199UT	11-199UU	11-199UV
11-199UW	11-199UX	11-199UY	11-199UZ
11-199VA	11-199VB	11-199VC	11-199VD
11-199VE	11-199VF	11-199VG	11-199VH
11-199VI	11-199VJ	11-199VK	11-199VL
11-199VM	11-199VN	11-199VO	11-199VP
11-199VQ	11-199VR	11-199VS	11-199VT
11-199VU	11-199VV	11-199VW	11-199VX
11-199VY	11-199VZ	11-199WA	11-199WB
11-199WC	11-199WD	11-199WE	11-199WF
11-199WG	11-199WH	11-199WI	11-199WJ
11-199WK	11-199WL	11-199WM	11-199WN
11-199WO	11-199WP	11-199WQ	11-199WR
11-199WS	11-199WT	11-199WU	11-199WV
11-199WW	11-199WX	11-199WY	11-199WZ
11-199XA	11-199XB	11-199XC	11-199XD
11-199XE	11-199XF	11-199XG	11-199XH
11-199XI	11-199XJ	11-199XK	11-199XL
11-199XM	11-199XN	11-199XO	11-199XP
11-199XQ	11-199XR	11-199XS	11-199XT
11-199XU	11-199XV	11-199XW	11-199XX
11-199XY	11-199XZ	11-199YA	11-199YB
11-199YC	11-199YD	11-199YE	11-199YF
11-199YG	11-199YH	11-199YI	11-199YJ
11-199YK	11-199YL	11-199YM	11-199YN
11-199YO	11-199YP	11-199YQ	11-199YR
11-199YS	11-199YT	11-199YU	11-199YV
11-199YW	11-199YX	11-199YZ	11-199ZA
11-199ZB	11-199ZC	11-199ZD	11-199ZE
11-199ZF	11-199ZG	11-199ZH	11-199ZI
11-199ZJ	11-199ZK	11-199ZL	11-199ZM
11-199ZN	11-199ZO	11-199ZP	11-199ZQ
11-199ZR	11-199ZS	11-199ZT	11-199ZU
11-199ZV	11-199ZW	11-199ZX	11-199ZY
11-199ZZ			

LEGEND:

- 90° SYMBOL
- PROPOSED WELLHEAD
- TARGET BOTTOM HOLE
- ENTRANCE POINT
- MID POINT
- BTM PERF.
- SECTION CORNERS LOCATED (NAD 83)

UTAH  
JAMES S. SWISHER  
Professional Engineer  
No. 10007  
Exp. 12/31/2025