

Great Western Operating Company, LLC

Location	Colorado	Slot	N12 - Berry IC 11-159HN
Field	Wattenburg	Well	Berry IC 11-159HN
Installation	Berry	Wellbore	Berry IC 11-159HN (PWB)

Created by	admin
Date plotted	16-Mar-2019
Plot reference is Berry IC 11-159HN (PWB).	
Ref wellpath is Berry IC 11-159HN (PWP#1).	
Coordinates are in Feet reference N12 - Berry IC 11-159HN.	
True Vertical Depths are reference Rig Datum.	
Measured Depths are reference Rig Datum.	
Rig Datum: Planned Datum #1	
Rig Datum to Mean Sea Level: 4863.60 ft.	
Plot North is aligned to TRUE North.	

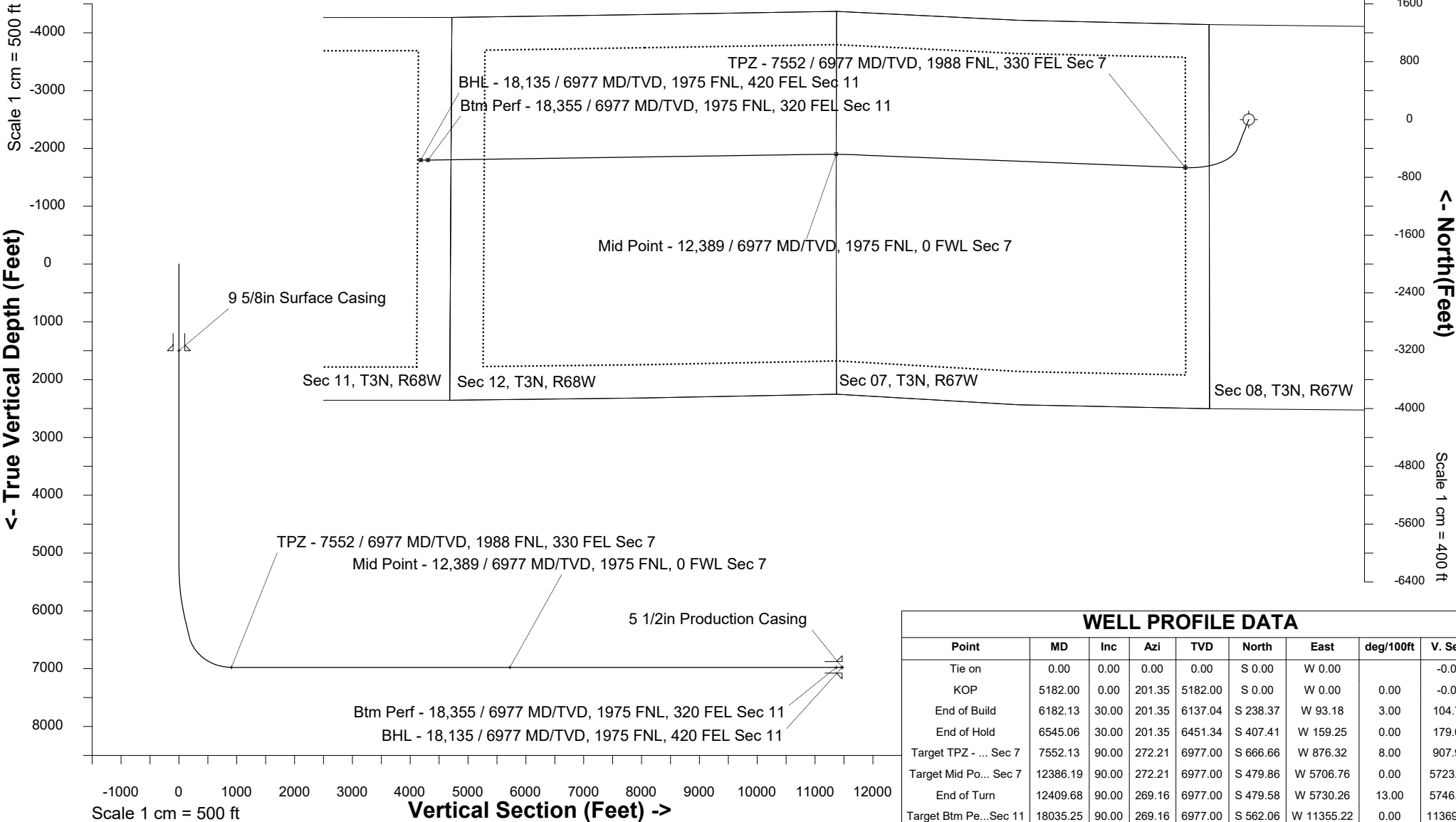
Scale 1 cm = 400 ft

East (Feet) ->

-12800 -12000 -11200 -10400 -9600 -8800 -8000 -7200 -6400 -5600 -4800 -4000 -3200 -2400 -1600 -800 0 800 1600

Scale 1 cm = 500 ft

<- True Vertical Depth (Feet)



WELL PROFILE DATA

Point	MD	Inc	Azi	TVD	North	East	deg/100ft	V. Sect
Tie on	0.00	0.00	0.00	0.00	S 0.00	W 0.00		-0.00
KOP	5182.00	0.00	201.35	5182.00	S 0.00	W 0.00	0.00	-0.00
End of Build	6182.13	30.00	201.35	6137.04	S 238.37	W 93.18	3.00	104.75
End of Hold	6545.06	30.00	201.35	6451.34	S 407.41	W 159.25	0.00	179.03
Target TPZ - ... Sec 7	7552.13	90.00	272.21	6977.00	S 666.66	W 876.32	8.00	907.93
Target Mid Po... Sec 7	12386.19	90.00	272.21	6977.00	S 479.86	W 5706.76	0.00	5723.42
End of Turn	12409.68	90.00	269.16	6977.00	S 479.58	W 5730.26	13.00	5746.87
Target Btm Pe... Sec 11	18035.25	90.00	269.16	6977.00	S 562.06	W 11355.22	0.00	11369.12
End of Turn	18042.16	90.00	270.06	6977.00	S 562.11	W 11362.13	13.00	11376.02
T.D. & Target BHL... 11	18135.20	90.00	270.06	6977.00	S 562.02	W 11455.16	0.00	11468.94

Azimuth 267.19 with reference 0.00 N, 0.00 E from N12 - Berry IC 11-159HN