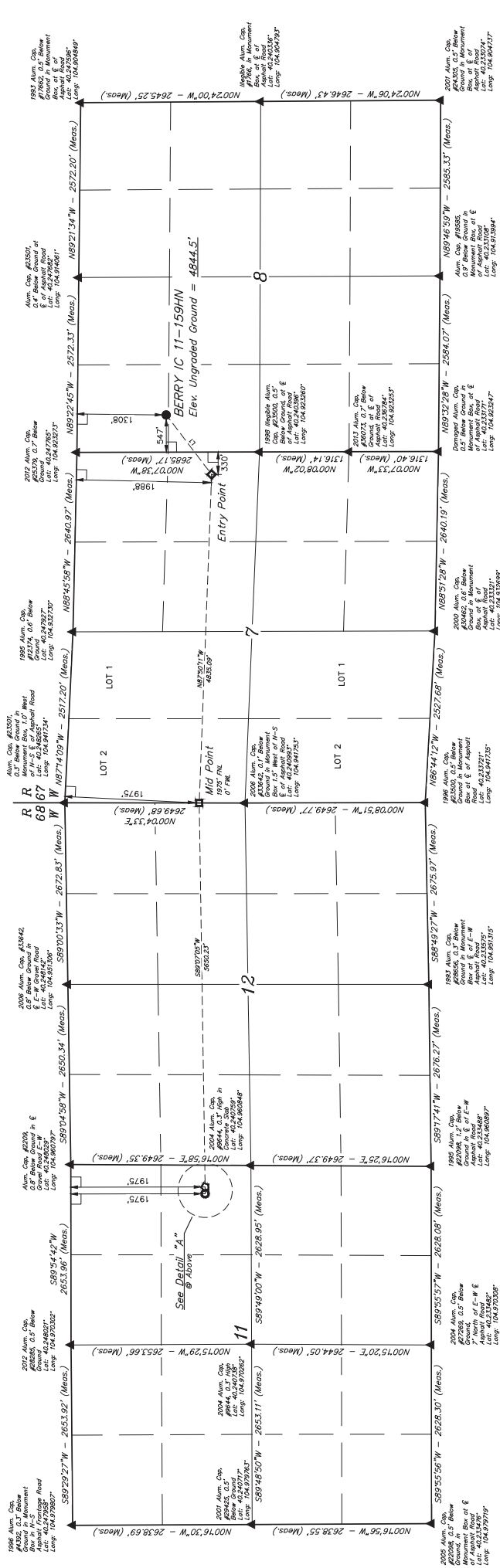
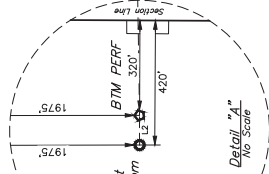


T3N, R67W, 6th P.M.

GREAT WESTERN OPERATING COMPANY
BERRY IC 11-159HN
SW 1/4 NW 1/4, SECTION 8, T3N, R67W, 6th P.M.
WELD COUNTY, COLORADO

TRANSVERSE MERCATOR PROJECTION WITH A CENTRAL MERIDIAN OF W 105° 00' 00"
BASIS OF BEARINGS
BASIS OF ELEVATION
OPUS SOLUTION GENERATED NAD 83

LINE TABLE		
LINE	DIRECTION	LENGTH
L1	S52°41'18"W	1101.38'
L2	S89°54'42"W	1101.00'



REVISIONS

NO.	DATE	DESCRIPTION
1	03/27/2024	INITIAL DRAFT
2	04/23/2024	REVISED PER COMMENTS
3	05/01/2024	FINAL FOR RECORD

UTIMATE

UTIMATE LLC
Corner Office 155 South 200 East
Vernal, UT 84078 • (435) 786-1017
utimate.com • 2024-2025

DRAWN BY: JAMES E. WATKINS
CHECKED BY: JAMES E. WATKINS
DATE: 05/01/2024

WELL LOCATION PLAT

PROPOSED WELLHEAD
= PROPOSED WELLHEAD
= TARGET BOTTOM HOLE
= ENTRY POINT
= MID POINT
= BTM PERF.

SECTION CORNERS LOCATED (NAD 83)

PROPOSED = 90° SYMBOL
= PROPOSED WELLHEAD
= TARGET BOTTOM HOLE
= ENTRY POINT
= MID POINT
= BTM PERF.

SECTION CORNERS LOCATED (NAD 83)

PROPOSED = 90° SYMBOL
= PROPOSED WELLHEAD
= TARGET BOTTOM HOLE
= ENTRY POINT
= MID POINT
= BTM PERF.

SECTION CORNERS LOCATED (NAD 83)