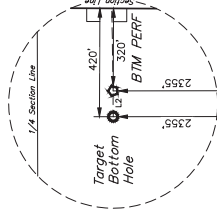
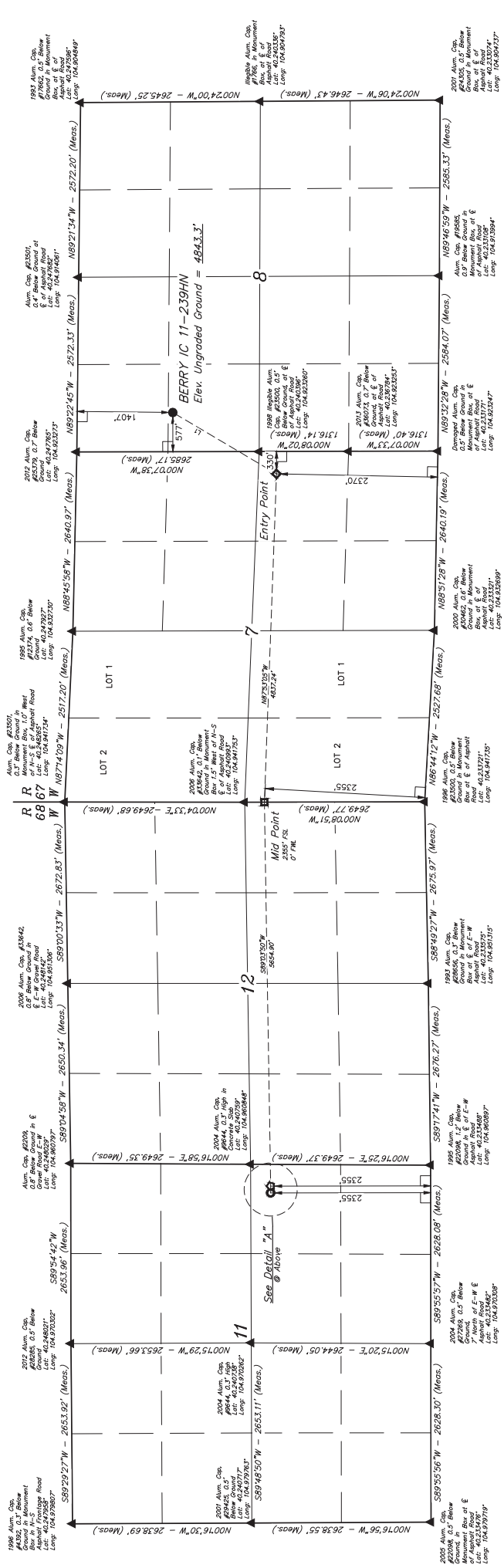
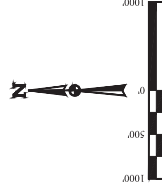


GREAT WESTERN OPERATING COMPANY  
BERRY IC 11-239HN  
SW 1/4 NW 1/4, SECTION 8, T3N, R67W, 6th P.M.  
WELD COUNTY, COLORADO

Detail "A"  
No Scale



LINE TABLE		
LINE	DIRECTION	LENGTH
L1	S30°37'52"W	1774.35'
L2	S89°55'57"W	100.00'



REV: 3	03-07-19	K.B.	(SHL MOVE)
--------	----------	------	------------

PDOP = 1.3

[illegible]

LEGEND:

= 90° SYMBOL  
 = PROPOSED WELLHEAD.  
 = TARGET BOTTOM HOLE  
 = ENTRY POINT.  
 = MID POINT.  
 = BTM PERF.