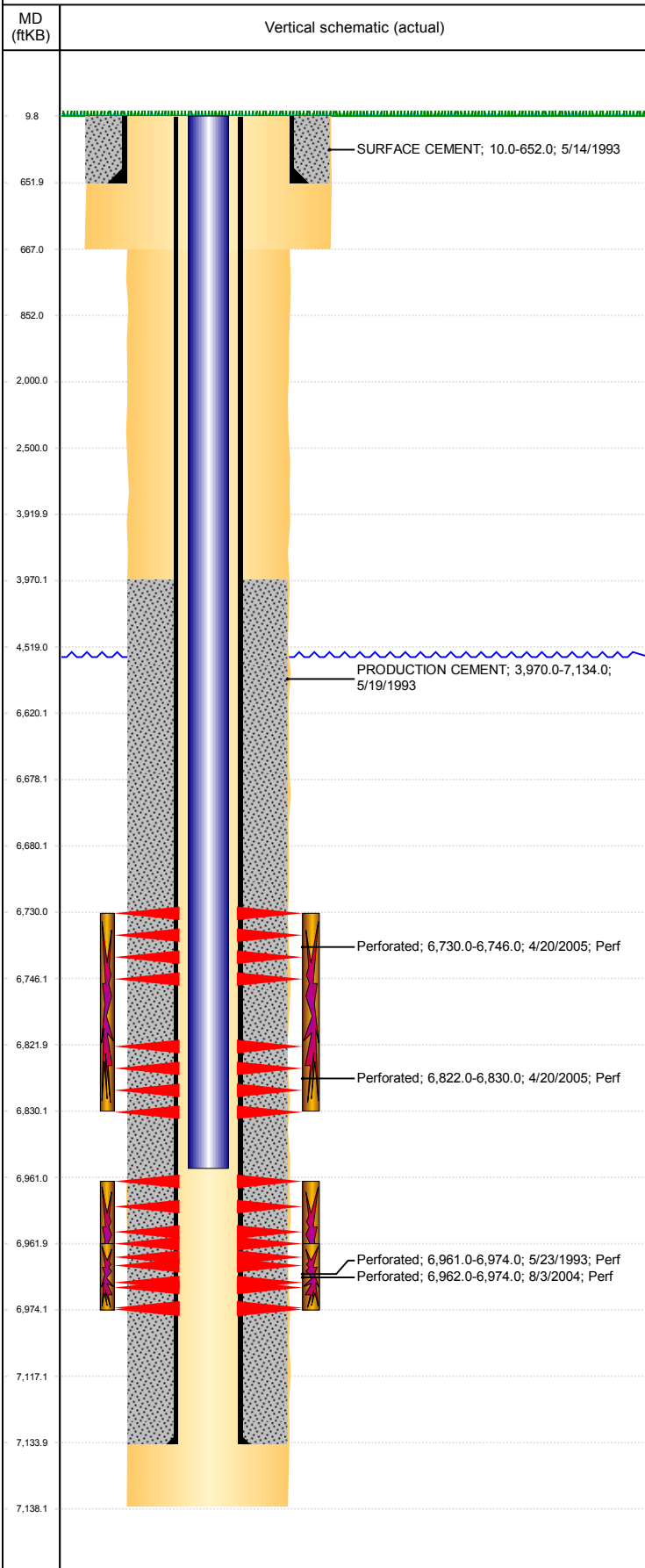


Well Name: PARKER BLUE D23-11

VERTICAL, ORIGINAL HOLE, 3/19/2019 7:24:25 AM



Well Header									
API 05-123-17003		Business Unit DJ BASIN			District 15		Well Config VERTICAL		
KB - GL / MSL (ft... 10.00		Spud Date 5/14/1993		P & A Date		Well Production Status SI		SoRT No	
Comment									
Surface Location (Congressional)									
Qtr 3 NE	Qtr 4 SW	Section 23	Twnshp 3	Twnsh... N	Range 64	Rng E/... W	Actual Latitude (°) 40.20970183	Actual Longitude (°) -104.52011705	
Wellbore Sections									
Section Des			Size (in)			Act Top, MD (ftKB)		Act Btm, MD (ftKB)	
SURFACE			12 1/4			10		667	
PRODUCTION			7 7/8			667		7,138	
Casing Strings									
Csg Des			Run Date		OD (in)	Wt/Len (lb/ft)	Grade	Top, MD (ftKB)	MD (ftKB)
Surface Casing			5/14/1993		8 5/8			10.0	652.0
Production			5/19/1993		3 1/2	7.70	M-75	10.0	7,134.0
Cement									
Des					Start Date		Top (ftKB)		Btm (ftKB)
SURFACE CEMENT					5/14/1993		10.0		652.0
PRODUCTION CEMENT					5/19/1993		3,970.0		7,134.0
Zone Statuses									
Zone Name	Status Date	Status	Fluid Type	Job				Prod Method	
NIOBRARA	4/30/2005	PR	Water Water	RECOMPLETION, 4/18/2005 00:00				Flowing Flowing	
NIOBRARA	2/5/2010	PR							
CODELL	2/5/2010	PR							
CODELL	10/27/2016	SI							
Perforation Data									
Linked Zone		Bnch/Stg	Entered Shot Total	Top (ftKB)		Btm (ftKB)		Date	
NIOBRARA, ORIGINAL HOLE			96	6,730.00		6,746.00		4/20/2005	
NIOBRARA, ORIGINAL HOLE			48	6,822.00		6,830.00		4/20/2005	
CODELL, ORIGINAL HOLE			52	6,961.00		6,974.00		5/23/1993	
CODELL, ORIGINAL HOLE			48	6,962.00		6,974.00		8/3/2004	
Stimulation Intervals									
Zone				Start Date		Top (ftKB)		Btm (ftKB)	
NIOBRARA, ORIGINAL HOLE				4/25/2005		6,730.0		6,830.0	
CODELL, ORIGINAL HOLE				5/25/1993		6,961.0		6,974.0	
CODELL, ORIGINAL HOLE				8/12/2004		6,962.0		6,974.0	
Other In Hole									
Run Date		Des				OD (in)	Top (ftKB)	Btm (ftKB)	
Logs									
Date		Type				Top, MD (ftKB)		Btm, MD (ftKB)	
5/19/1993		COMPENSATED DENSITY				6,450.0		7,130.0	
5/19/1993		INDUCTION				4,250.0		4,650.0	
5/24/1993		CBL/CCL/GR				4,250.0		4,650.0	
5/22/2018		GYRO				10.0		6,850.0	
Plug Back Total Depths									
Date		Type		Com				Depth (ftKB)	
								7,117.0	