



**Well Summary**

Project: *Cuttings Area #1*  
Location: *Unit C-28P Pad / Former Man Camp.*  
Date(s): *2/25/2019*  
Contractor: *HRL Compliance Drilling Services*  
Rig Type: *CME 55HC*  
Drilling Method: *HSA*  
Sample Type: *Standard Split Spoon*

Well Name: *MW-01*  
Total Depth: *20'*  
Elevation TOC: *6476.95*  
Elevation Ground: *6473.90*  
Latitude: *~~39.841322~~ 39.840837*  
Longitude: *-108.393340*  
Logged By: *MEM*

Depth	Sample Interval	Recovery	Well Construction	Graphic Log	Material Description
0					Ground Surface
2					Mk. Sandy Silt, mbrn. moist, sand is pred fgrained, occ small gravels 1/2" no odors or staining
4	X				
6					Mk. Sand/Silt, AA, wet @ approx 8.5', very soupy all the way to 20 feet.
8					
10					
12	X				
14					Completion Info: T.D 20 ft Screened Int 5-20' T.O.S 3.0' T.O.B 2.0' Cemented 4X4X5 stickup cover to surface
16					
18					
20					
22					
24					
26					
28					
30					
32					
34					
36					
38					
40					



### Well Summary

Project: *Cullings Area #1*  
 Location: *URSA C-28P Pool Man/Camp.*  
 Date(s): *2/25/26/2019*  
 Contractor: *HRH*  
 Rig Type: *CME 632C*  
 Drilling Method: *HSA*  
 Sample Type: *Split Spoon*

Well Name: *MW-02*  
 Total Depth: *25.5'*  
 Elevation TOC: *6472.8*  
 Elevation Ground: *6469.65*  
 Latitude: *39.840712*  
 Longitude: *-108.391619*  
 Logged By: *MEM.*

Depth	Sample Interval	Recovery	Well Construction	Graphic Log	Material Description
0					Ground Surface
2					<p><i>Ch/Sm - Clayey Silt / Sandy Silt, moist, common small gravels to 1".</i></p>
4					
6	X				<p><i>Completion Info</i>  <i>Screened Int 10-25'</i>  <i>T.O.S. 7.0</i>  <i>T.O.B. 2.0</i>    <i>Cement to Surface w/ Flush Mant Cover</i></p>
8					
10					
12					
14					<p><i>Sm - Sandy S.H., common small gravels to 1" - looks wet @ approx 17.0' incr gravel content w/ depth</i></p>
16	X				
18					<p><i>GM/GC - Sandy Clayey Gravel, mbrn, saturated, Sandstone &amp; Shale gravels up to 2" in a Sand/Silt, c.k., matrix. Sand is f. w/ some mgr.</i></p>
20					
22					
24					
26	X			<i>split spoon opening</i>	
28					
30					
32					
34					
36					
38					
40					



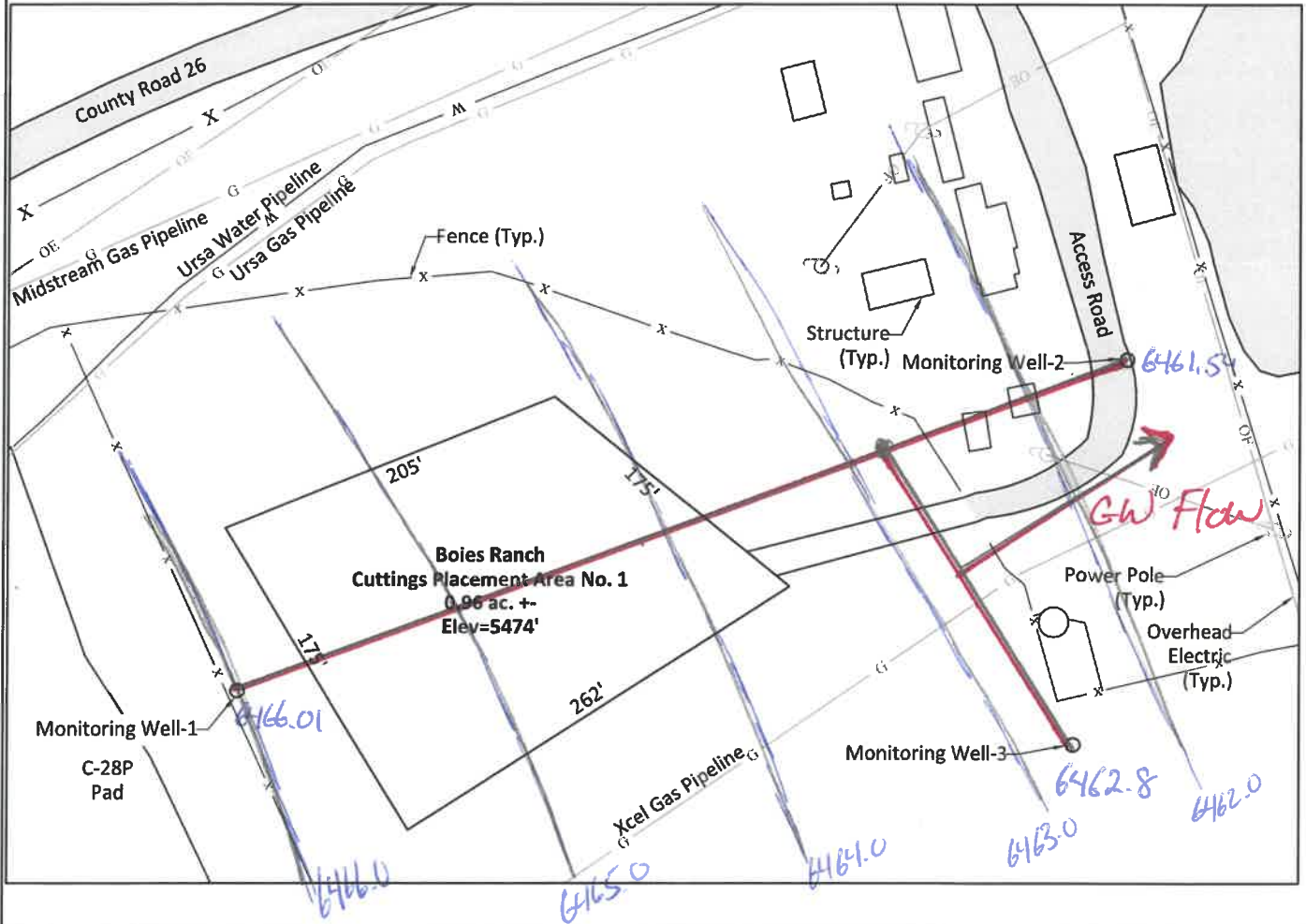
**Well Summary**

**Project:** Cuttings Area #1  
**Location:** Use C-28P Pad / Former Man Camp.  
**Date(s):** 2/25/2019  
**Contractor:** HRI Compliance Party Services  
**Rig Type:** CME SSKC  
**Drilling Method:** HSA  
**Sample Type:** Standard Split Spoon

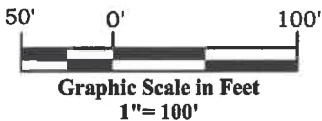
**Well Name:** MW-03  
**Total Depth:** 20'  
**Elevation TOC:** 6476.95  
**Elevation Ground:** 6473.90  
**Latitude:** ~~39.84132237810837~~ 39.840712  
**Longitude:** ~~108.343340~~ -108.391619  
**Logged By:** MEM

Depth	Sample Interval	Recovery	Well Construction	Graphic Log	Material Description
0					Ground Surface
2					Mk. Sandy Silt - medium med. sand is pred. (gravel), w/ small gravel < 1/2" nodules or staining
4	X				
6					Mk. Sand/Silt, AA, wet @ approx 8.5', very soupy all the way to 20 feet.  Completion Info: T.D 20 ft Screened Int 5-20' T.O.S 3.0' T.O.B 2.0 Cemented 4x4x5 Stickup Cover to surface
8					
10					
12	X				
14					
16					
18					
20					
22					
24					
26					
28					
30					
32					
34					
36					
38					
40					

# Boies Ranch Cuttings Area No. 1 Monitoring Well Exhibit



Monitoring Well 1	Monitoring Well-2	Monitoring Well-3
Latitude = 39.84083691°N	Latitude = 39.84132192°N	Latitude = 39.84071229°N
Longitude = W108.39333964°W	Longitude = 108.39148766°W	Longitude = 108.39161878°W
Northing = 14,479,444.4'	Northing = 14,479,636.2	Northing = 14,479,413.1
Easting = 2,372,152.2'	Easting = 2,372,666.95	Easting = 2,372,636.62
Top Lid Elev = 6477.25'	Top Lid Elev = 6482.1'	Top Lid Elev = 6473.0'
Top Pvc Elev = 6476.95'	Top Pvc Elev = 6481.85'	Top Pvc Elev = 6472.8'
Ground Elev = 6473.9'	Ground Elev = 6482.0'	Ground Elev = 6469.65'



**River Valley Survey, Inc.**  
110 East 3rd. Street, Suite 213  
Rifle, Colorado 81650  
Ph: 970-379-7846



**Ursa** | OPERATING COMPANY

Project: - RVS 06001-65-SA

Field Date: 02-27-19

Scale: 1" = 100'

Date: 03-04-19

Sheet: 1 of 1

Rev:

By: TJK

**Boies Ranch Cuttings Area No. 1  
Monitoring Well Exhibit**  
Section 28, Township 2 South, Range 98 West