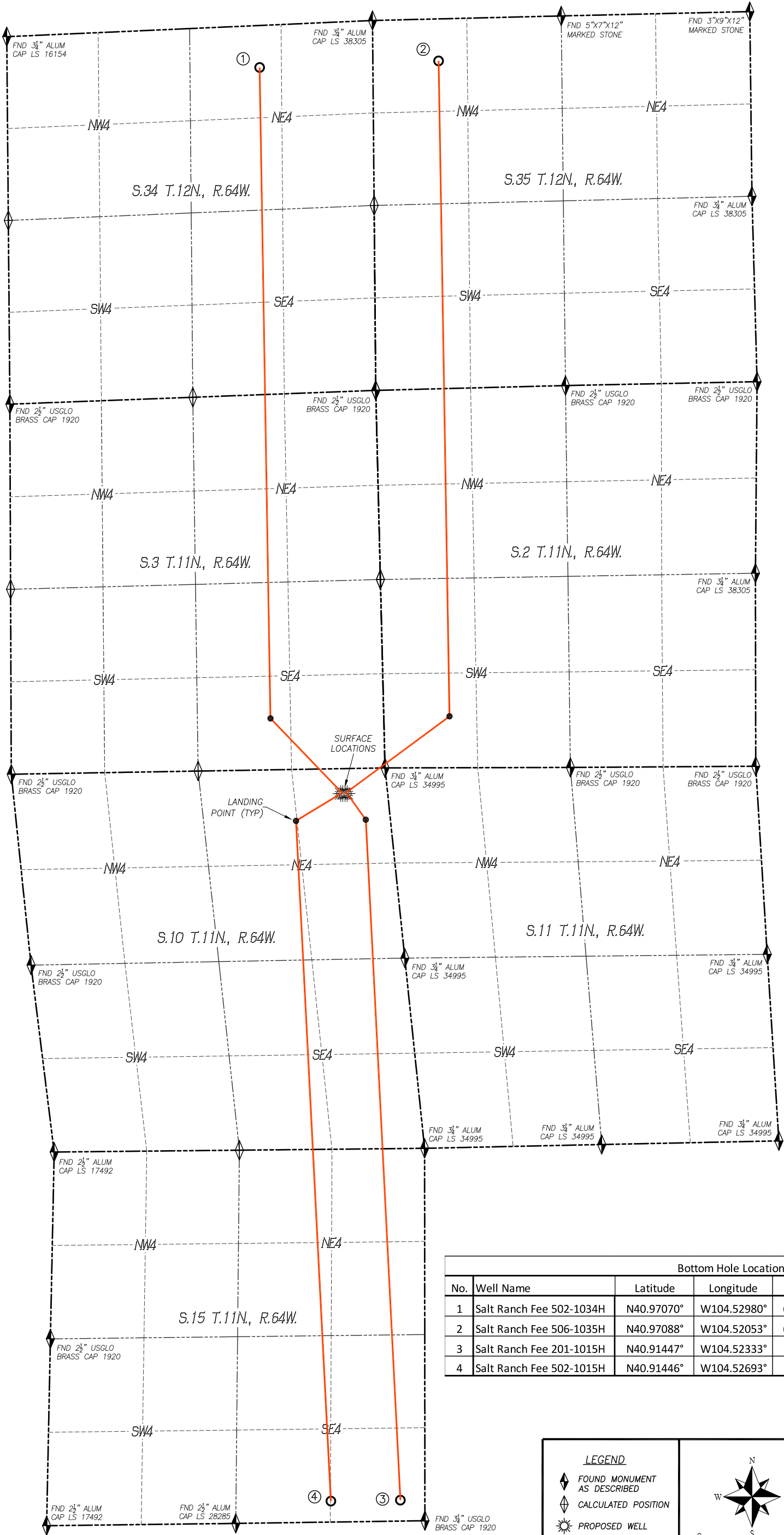


MULTI WELL PLAN
SALT RANCH FEE 10 EAST WELL PAD
SECTION 10, TOWNSHIP 11 NORTH, RANGE 64 WEST OF THE 6TH P.M.



Bottom Hole Location						
No.	Well Name	Latitude	Longitude	Footage		BH Location STR
1	Salt Ranch Fee 502-1034H	N40.97070°	W104.52980°	600' FNL	1620' FEL	34-12N-64W
2	Salt Ranch Fee 506-1035H	N40.97088°	W104.52053°	600' FNL	940' FWL	35-12N-64W
3	Salt Ranch Fee 201-1015H	N40.91447°	W104.52333°	300' FSL	350' FEL	15-11N-64W
4	Salt Ranch Fee 502-1015H	N40.91446°	W104.52693°	300' FSL	1344' FEL	15-11N-64W

LEGEND

- FOUND MONUMENT AS DESCRIBED
- CALCULATED POSITION
- PROPOSED WELL
- EXISTING WELL
- BOTTOM HOLE

CLEAR CREEK
Resource Partners

DALEY LAND SURVEYING, INC.
PARKER, COLORADO
303.953.9841

\\Survey\1707001\Drawings\WMP Salt Ranch Fee 10 East Well Pad.dwg