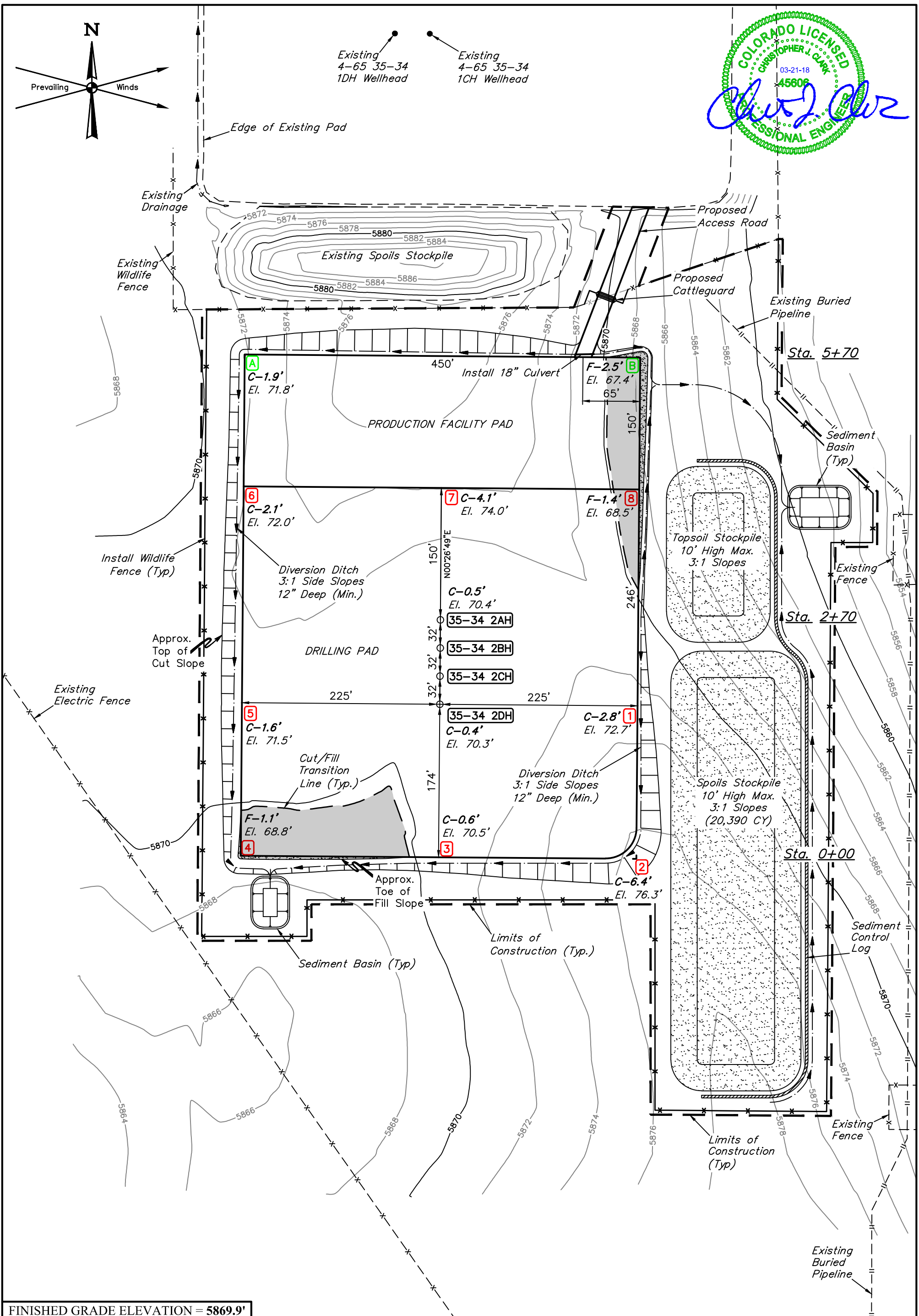


Existing 4-65 35-34 1DH Wellhead
 Existing 4-65 35-34 1CH Wellhead



FINISHED GRADE ELEVATION = 5869.9'

NOTES:

- Round corners at 35' radius or as needed.
- Construct diversion ditches as needed.
- Contours shown at 2' intervals.
- Cut/Fill slopes 3:1 (Typ.).

ConocoPhillips Company

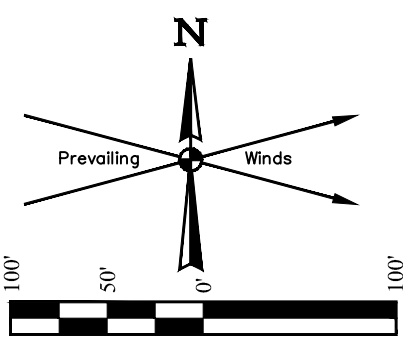
STATE BIERSTADT #4-65 35-34 2AH, 2BH, 2CH & 2DH
 SE 1/4 NE 1/4, SECTION 35, T4S, R65W, 6th P.M.
 ARAPAHOE COUNTY, COLORADO

SURVEYED BY	GREG WEIMER, O.R.	02-27-18	SCALE
DRAWN BY	F.R.	03-14-18	1" = 100'

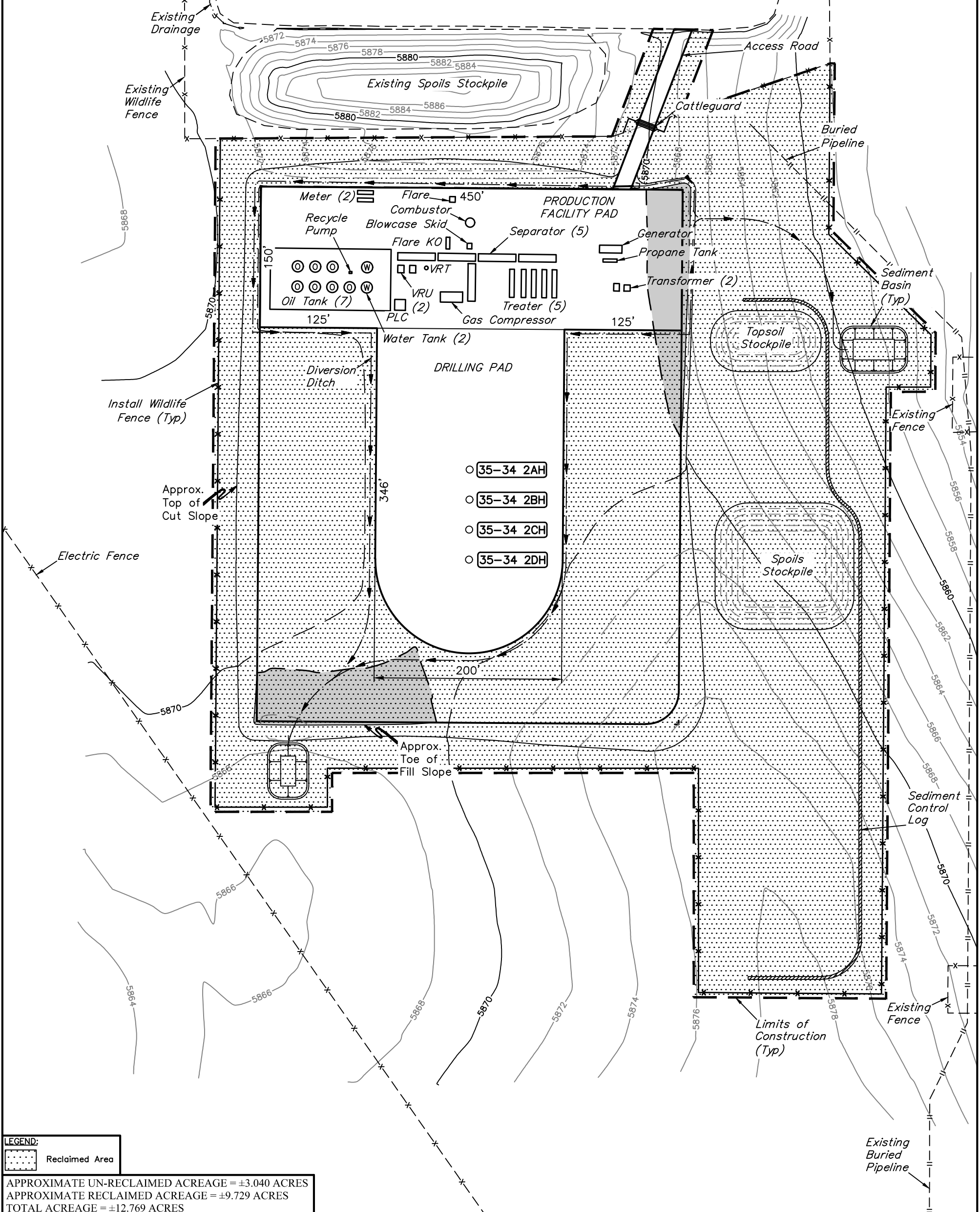
CONSTRUCTION LAYOUT **FIGURE #1**



UELS, LLC
 Corporate Office * 85 South 200 East
 Vernal, UT 84078 * (435) 789-1017



Existing 4-65 35-34 1DH Wellhead
 Existing 4-65 35-34 1CH Wellhead



LEGEND:
 [Dotted Pattern] Reclaimed Area

APPROXIMATE UN-RECLAIMED ACREAGE = ±3.040 ACRES
 APPROXIMATE RECLAIMED ACREAGE = ±9.729 ACRES
 TOTAL ACREAGE = ±12.769 ACRES

NOTES:
 • Contours shown at 2' intervals.

ConocoPhillips Company

STATE BIERSTADT #4-65 35-34 2AH, 2BH, 2CH & 2DH
 SE 1/4 NE 1/4, SECTION 35, T4S, R65W, 6th P.M.
 ARAPAHOE COUNTY, COLORADO

SURVEYED BY	GREG WEIMER, O.R.	02-27-18	SCALE
DRAWN BY	K.B.	03-06-18	1" = 100'

INTERIM RECLAMATION PLAN FIGURE #5



UELS, LLC
 Corporate Office * 85 South 200 East
 Vernal, UT 84078 * (435) 789-1017