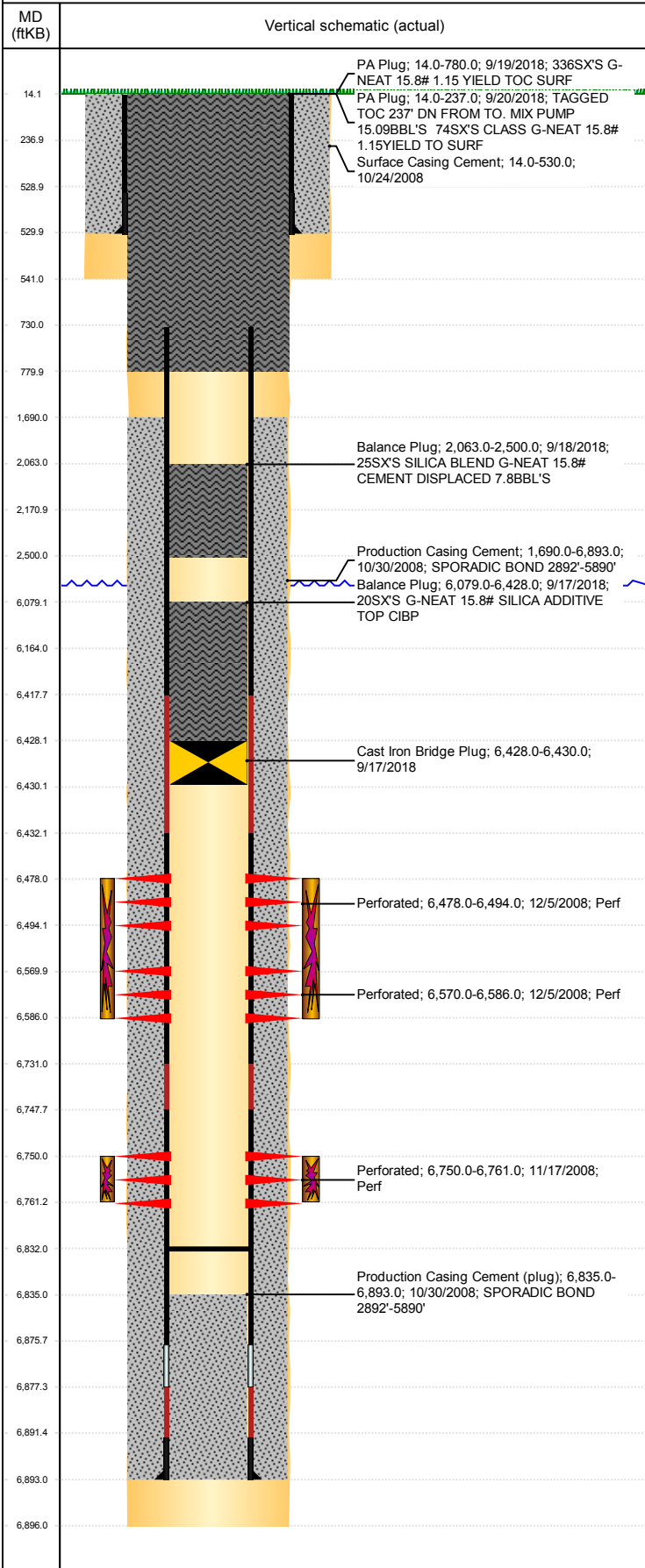


**Well Name: 70 RANCH USX BB09-15**

VERTICAL, ORIGINAL HOLE, 2/12/2019 9:54:50 AM



Well Header			
API 05-123-28084	Business Unit DJ BASIN	District 15	Well Config VERTICAL
KB - GL / MSL (ft...) 14.00	Spud Date 10/24/2008	P & A Date 9/20/2018	Well Production Status PA
SoRT Yes			
Comment PER REGULATORY: SUNDRY FILED W/STATE TO CHANGE NAME LOGS SHOW AIR GAP @ 13', FIELD ENTERED SURFACE START DEPTHS @ 14'			
Surface Location (Congressional)			
Qtr 3 SW	Qtr 4 SE	Section 9	Township 5 N
Range 63 W	Rng E/...	Actual Latitude (°) 40.40792939	Actual Longitude (°) -104.44027081
Wellbore Sections			
Section Des	Size (in)	Act Top, MD (ftKB)	Act Btm, MD (ftKB)
SURFACE	12 1/4	14	541
PRODUCTION	7 7/8	541	6,896
Casing Strings			
Csg Des	Run Date	OD (in)	Wt/Len (lb/ft)
Surface	10/24/2008	8 5/8	24.00
Production	10/30/2008	4 1/2	11.60
Grade	Top, MD (ftKB)	MD (ftKB)	
J-55	14.0	530.0	
M-80	14.0	6,893.0	
Cement			
Des	Start Date	Top (ftKB)	Btm (ftKB)
Surface Casing Cement	10/24/2008	14.0	530.0
Production Casing Cement	10/30/2008	1,690.0	6,893.0
Balance Plug	9/17/2018	6,079.0	6,428.0
Balance Plug	9/18/2018	2,063.0	2,500.0
PA Plug	9/19/2018	14.0	780.0
PA Plug	9/20/2018	14.0	237.0
Zone Statuses			
Zone Name	Status Date	Status	Fluid Type
Job	Prod Method		
NIORRARA	12/7/2008	PR	
NIORRARA	9/20/2018	P&A	
CODELL	12/7/2008	PR	
CODELL	9/20/2018	P&A	
Perforation Data			
Linked Zone	Bnch/Stg	Entered Shot Total	Top (ftKB)
Bottom (ftKB)	Date		
NIORRARA, ORIGINAL HOLE	A	32	6,478.00
6,494.00	12/5/2008		
NIORRARA, ORIGINAL HOLE	B	32	6,570.00
6,586.00	12/5/2008		
CODELL, ORIGINAL HOLE		44	6,750.00
6,761.00	11/17/2008		
Stimulation Intervals			
Zone	Start Date	Top (ftKB)	Btm (ftKB)
NIORRARA, ORIGINAL HOLE	12/5/2008	6,478.0	6,586.0
CODELL, ORIGINAL HOLE	12/5/2008	6,750.0	6,761.0
Other In Hole			
Run Date	Des	OD (in)	Top (ftKB)
Bottom (ftKB)			
9/17/2018	Cast Iron Bridge Plug	3.909	6,428.0
6,430.0			
Logs			
Date	Type	Top, MD (ftKB)	Btm, MD (ftKB)
10/30/2008	Caliper/Comp. Density/Neutron/GR/SP/ML	530.0	6,899.0
10/30/2008	DIL/GR/SP/Caliper	2,650.0	6,899.0
11/12/2008	CBL/CCL/GR	1,600.0	6,828.0
5/17/2011	GYRO	0.0	6,720.0
Plug Back Total Depths			
Date	Type	Com	Depth (ftKB)
11/12/2008	FILL	DEPTH LOGGER ON CBL	6,835.0
1/20/2009	PLUG REMNANTS	DRILL CIFTP W/ BURN SHOE AND CHASE DOWN W/ 223 JTS	6,832.0