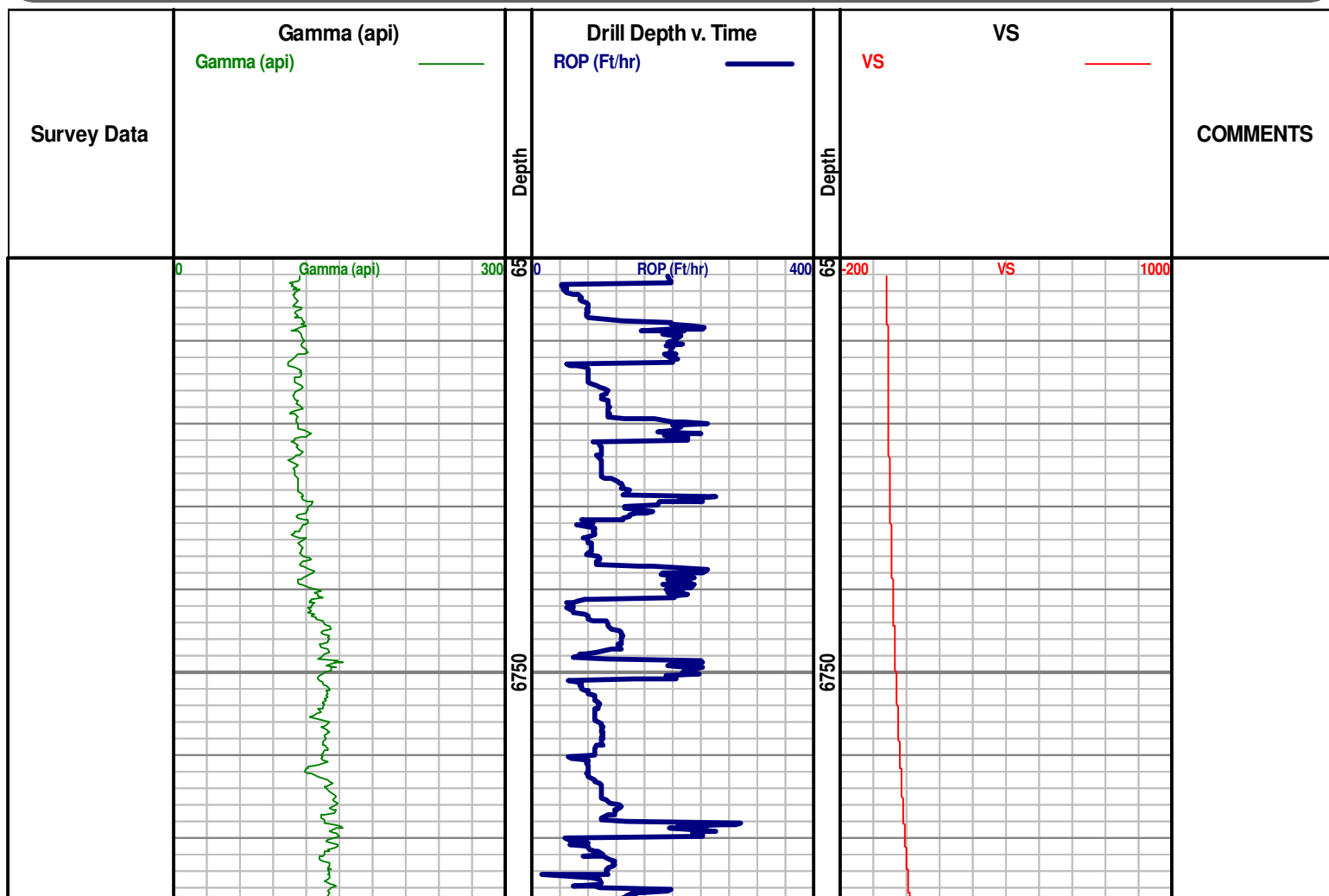


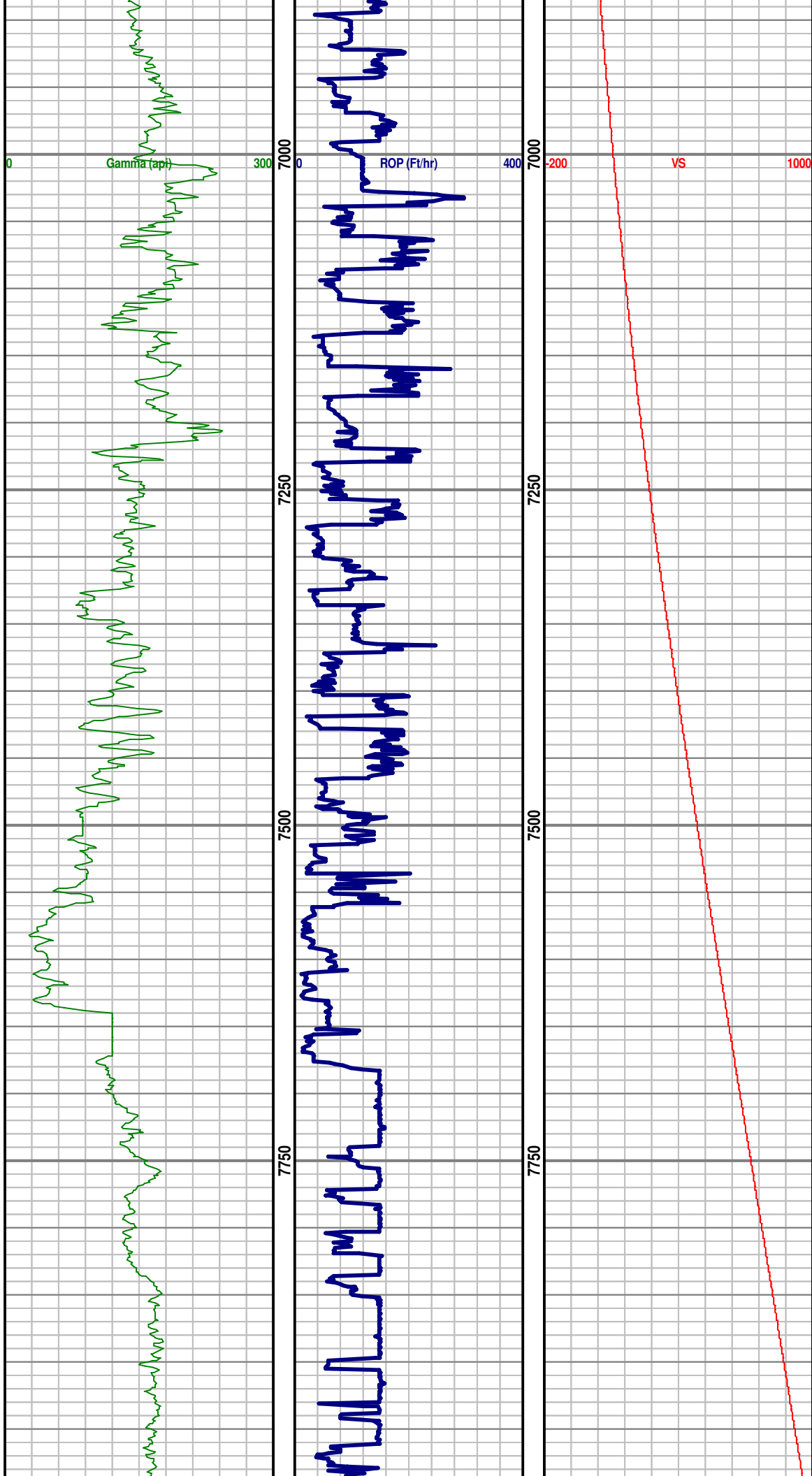


**Denver Remote Management Center**  
**13949 West Colfax Ave, Suite 205**  
**Lakewood, Colorado 80401**

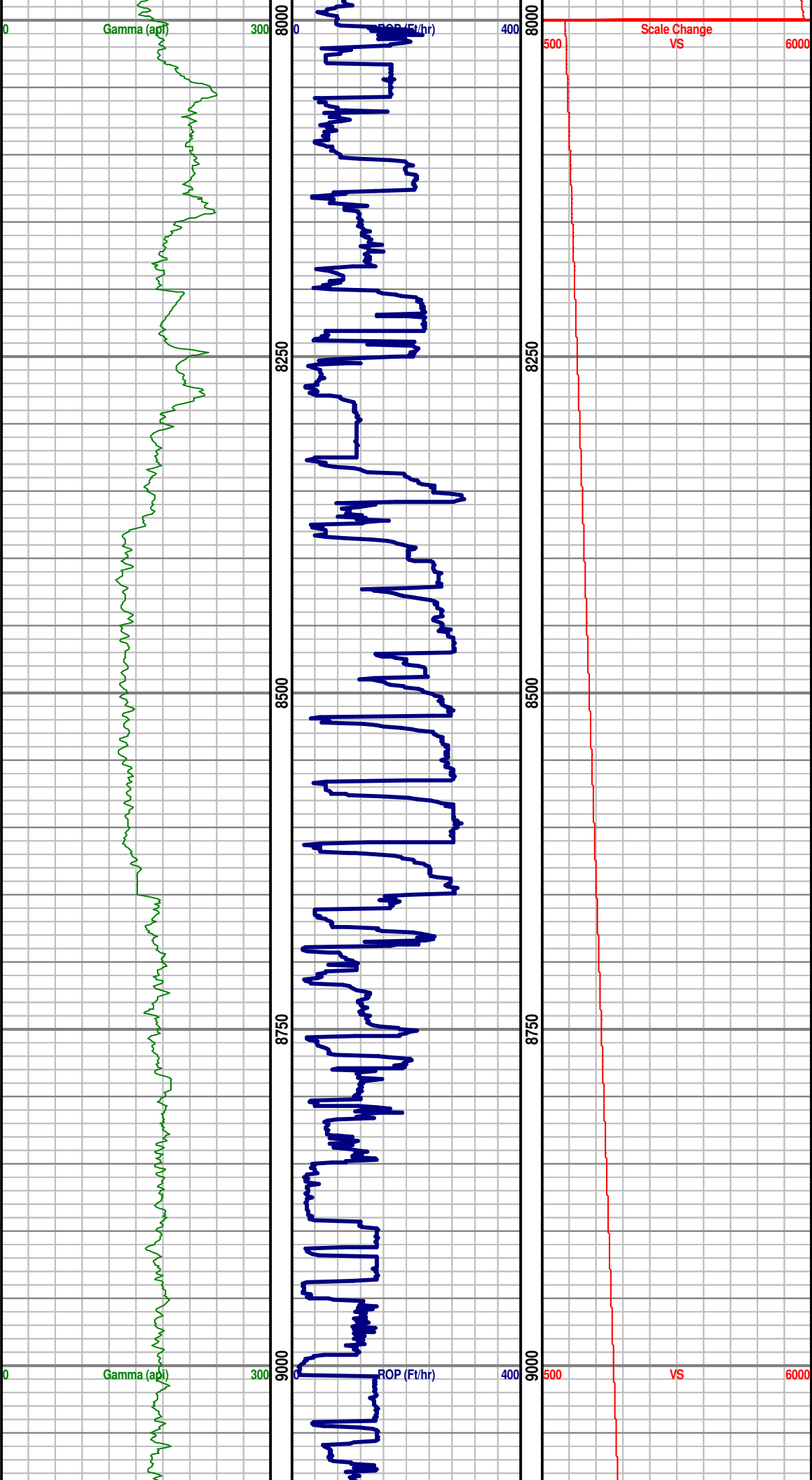
Phone 303.325.3289  
[WWW.HZMUD.COM](http://WWW.HZMUD.COM)

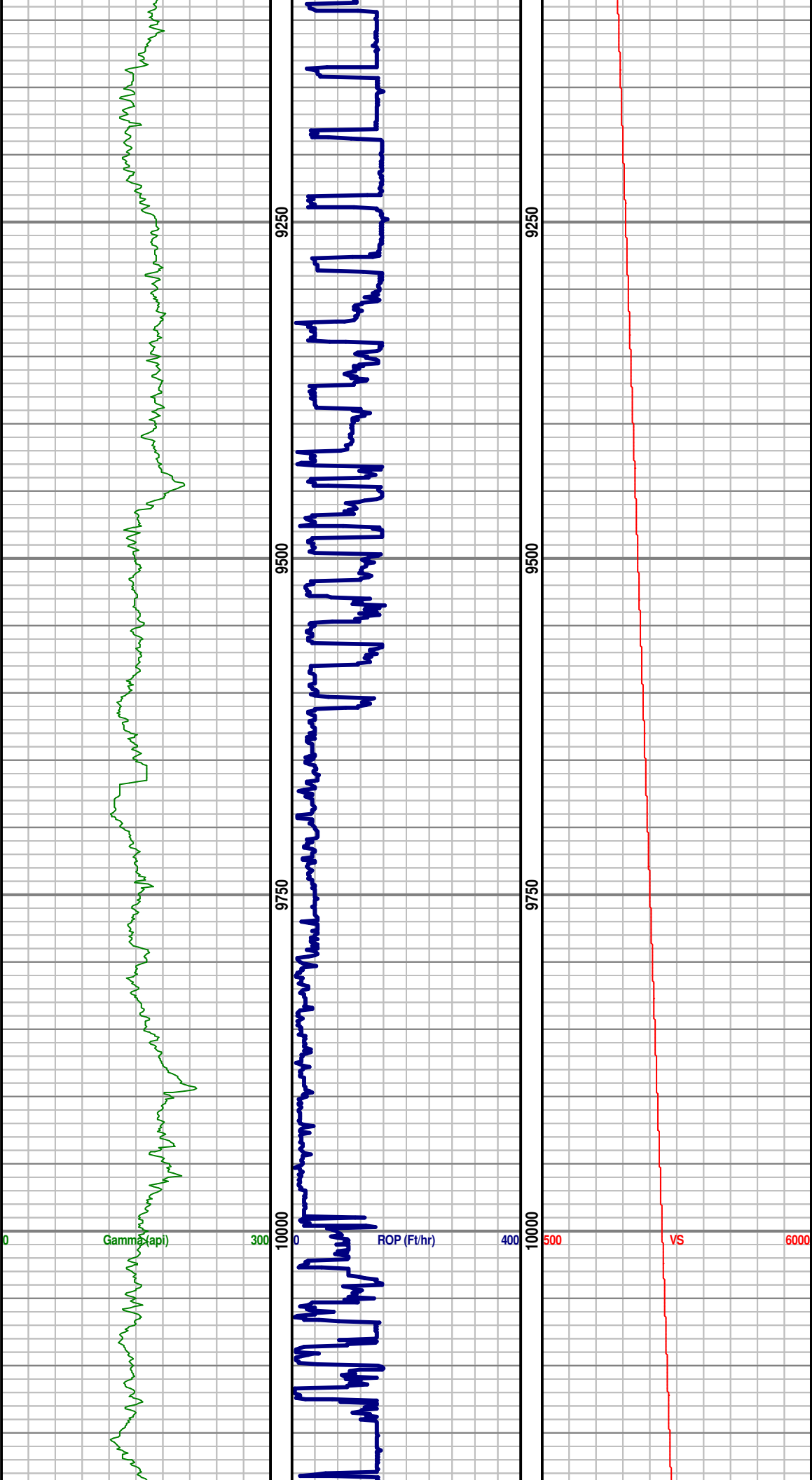
Customer Information	Well Information
<p><b>Operator:</b> PDC Energy Inc  1775 Sherman Street  Suite 3000  Denver, CO 80203</p> <p><b>Geologist:</b> Rachel Debaillon  PDC Energy, Inc.</p>	<p><b>Well Name:</b> Ram Land 300-443</p> <p><b>Location:</b> NESW SEC 30, 4N, 66W, 6TH  2,486' FSL x 1,472' FWL</p> <p><b>County:</b> Weld  <b>State:</b> Colorado</p>
Remote Logging Details	
<p><b>Logger:</b> HORIZON DENVER REMOTE  MANAGEMENT CENTER</p> <p><b>Log Interval:</b> 6,512' MD to 11,759' MD  <b>Start Date:</b> June 27, 2014  <b>Release Date:</b> July 7, 2014</p>	<p><b>Drilling Rig:</b> Ensign 121  <b>Total Depth:</b> 11,759'  <b>TD Date:</b> July 7, 2014  <b>Field:</b> Wattenberg  <b>KB Elevation:</b> 4,772'  <b>GR Elevation:</b> 4,758'  <b>API Number:</b> 05-123-37970-0000</p>

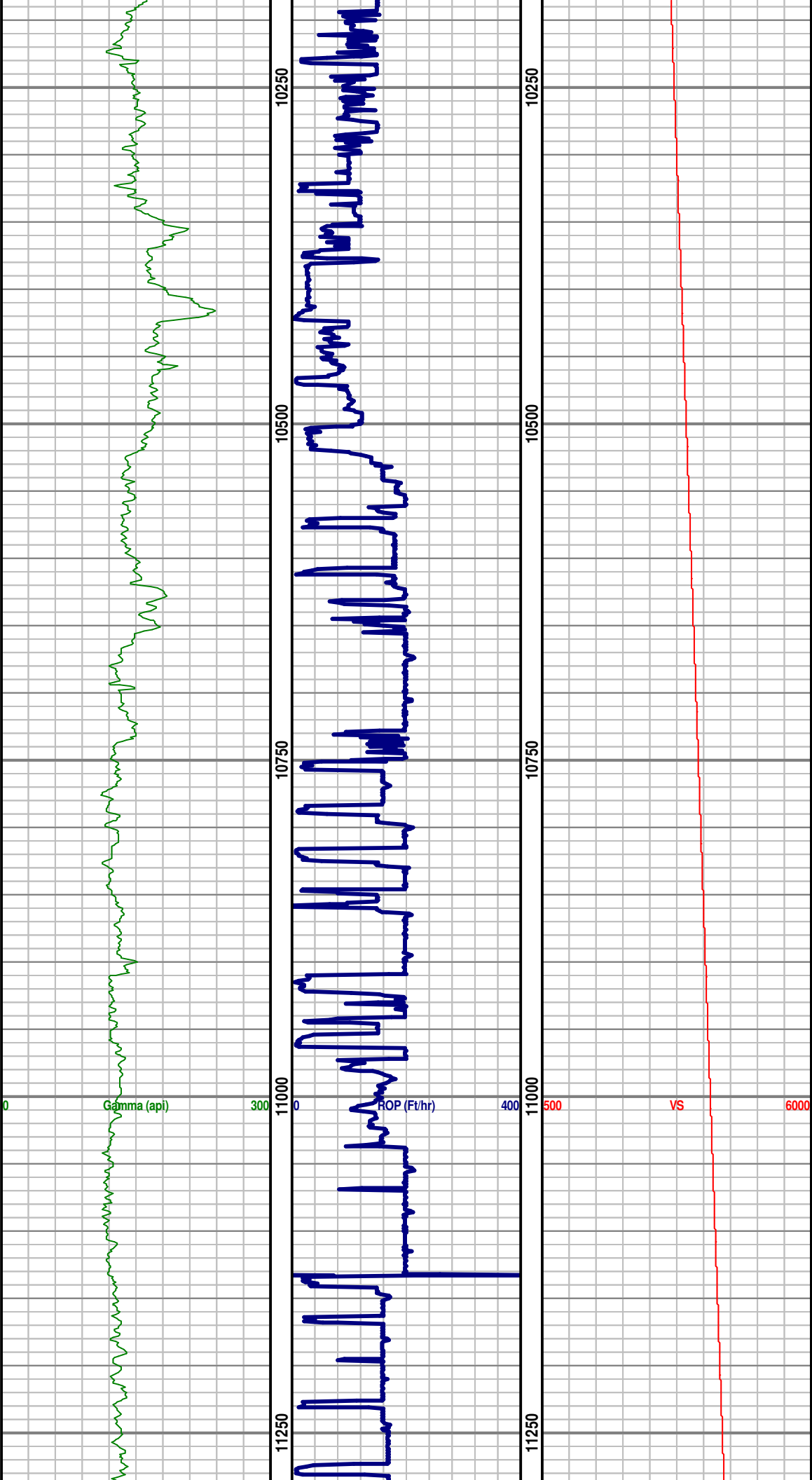


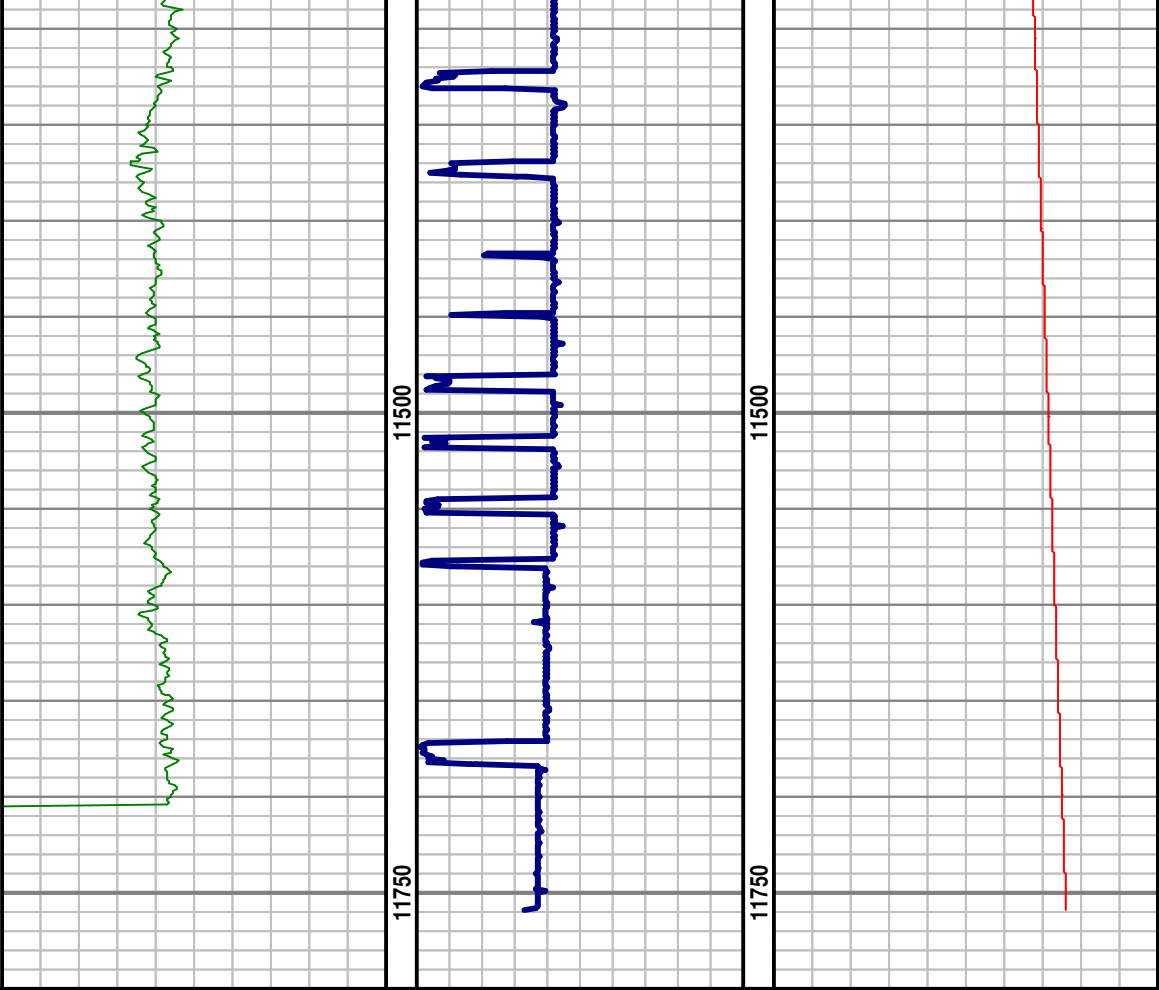


TD CURVE @  
7,670' MD









TD WELL @  
11,759' MD  
(7,261.4' TVD,  
4.685.3' VS) ON  
7/7/2014