

VERDAD RESOURCES



Location: COLORADO Slot: SLOT#04 TIMBRO 9-59 8A-9-8(1720'FNL&475'FWL,SEC.08)

Field: WELD COUNTY (NAD83/TN) Well: TIMBRO 9-59 8A-9-8

Facility: SEC.08-T09N-R59W Wellbore: TIMBRO 9-59 8A-9-8 PWB

| | |
|---|--|
| Plot reference wellpath is TIMBRO 9-59 8A-9-8 (REV-B.0) PWP | Grid System: NAD83 / Lambert Colorado SP, Northern Zone (501), US feet |
| True vertical depths are referenced to Big Rig (24KB) (RKB) | * = Wellpath was transformed from a different geodetic datum |
| Measured depths are referenced to Big Rig (24KB) (RKB) | North Reference: True north |
| Big Rig (24KB) (RKB) to Mean Sea Level: 5107 feet | Scale: True distance |
| Mean Sea Level to Ground level (At Slot: SLOT#04 TIMBRO 9-59 8A-9-8(1720'FNL&475'FWL,SEC.08)): 0 feet | Depths are in feet |
| Coordinates are in feet referenced to Slot | Created by: gusnaler on 2019-03-12 |
| | Database: WA_DEN_Denver_Data |

| Location Information | | | | | | | |
|---|--|-------------------|--------------------|-------------------|--------------------|----------------|-----------------|
| Facility Name | | Grid East (US ft) | Grid North (US ft) | Latitude | Longitude | | |
| SEC.08-T09N-R59W | | 3412704.276 | 1525987.120 | 40°46'03.731"N | 104°00'36.076"W | | |
| Slot | | Local N (ft) | Local E (ft) | Grid East (US ft) | Grid North (US ft) | Latitude | Longitude |
| SLOT#04 TIMBRO 9-59 8A-9-8(1720'FNL&475'FWL,SEC.08) | | -47.75 | 0.28 | 3412705.358 | 1525939.384 | 40°46'03.259"N | 104°00'36.072"W |
| Big Rig (24KB) (RKB) to Ground level (At Slot: SLOT#04 TIMBRO 9-59 8A-9-8(1720'FNL&475'FWL,SEC.08)) | | | | | 5107ft | | |
| Mean Sea Level to Ground level (At Slot: SLOT#04 TIMBRO 9-59 8A-9-8(1720'FNL&475'FWL,SEC.08)) | | | | | 0ft | | |
| Big Rig (24KB) (RKB) to Mean Sea Level | | | | | 5107ft | | |

| Well Profile Data | | | | | | | |
|---------------------|----------|---------|---------|----------|--------------|--------------|---------------|
| Design Comment | MD (ft) | Inc (°) | Az (°) | TVD (ft) | Local N (ft) | Local E (ft) | DLS (°/100ft) |
| Tie On | 1846.00 | 6.080 | 256.530 | 1837.24 | -44.52 | -154.02 | 2.04 |
| End of Tangent | 1923.00 | 6.080 | 256.530 | 1913.81 | -46.42 | -161.96 | 0.00 |
| End of 3D Arc (J) | 2063.35 | 8.886 | 256.097 | 2052.95 | -50.75 | -179.71 | 2.00 |
| End of Tangent (J) | 4085.54 | 8.886 | 256.097 | 4050.86 | -125.81 | -482.94 | 0.00 |
| End of Drop (XS) | 4529.85 | 0.000 | 89.514 | 4493.40 | -134.08 | -516.32 | 2.00 |
| End of Tangent (XS) | 5729.85 | 0.000 | 89.514 | 5693.40 | -134.08 | -516.32 | 0.00 |
| Build (XS) | 6735.30 | 90.490 | 89.514 | 6330.00 | -128.63 | 125.73 | 9.00 |
| End of Tangent (XS) | 16017.54 | 90.490 | 89.514 | 6250.56 | -49.91 | 9407.30 | 0.00 |
| End of 3D Arc (J) | 16019.47 | 90.489 | 89.553 | 6250.54 | -49.90 | 9409.22 | 2.00 |
| End of Tangent (J) | 16317.50 | 90.489 | 89.553 | 6248.00 | -47.57 | 9707.23 | 0.00 |

| Targets | | | | | | | |
|---|----------|----------|--------------|--------------|-------------------|--------------------|-----------------|
| Name | MD (ft) | TVD (ft) | Local N (ft) | Local E (ft) | Grid East (US ft) | Grid North (US ft) | Latitude |
| TIMBRO 9-59 8A-9-2 SECTION 08 | 15.00 | 47.75 | -0.28 | 3412704.28 | 1525987.12 | 40°46'03.731"N | 104°00'36.076"W |
| TIMBRO 9-59 8A-9-2 SECTION 09 | 15.00 | 47.75 | -0.28 | 3412704.28 | 1525987.12 | 40°46'03.731"N | 104°00'36.076"W |
| TIMBRO 9-59 8A-9-8 Rev-2 TARGET BOTTOM HOLE(1849'FNL&300'FEL,SEC.09) | 16317.50 | 6248.00 | -47.57 | 9707.23 | 3422411.97 | 1526054.92 | 40°46'02.770"N |
| TIMBRO 9-59 8A-9-8 ENDING PROD. INTERVAL(1851'FNL&600'FEL,SEC.09) | 16017.54 | 6250.56 | -49.91 | 9407.30 | 3422112.09 | 1526047.54 | 40°46'02.748"N |
| TIMBRO 9-59 8A-9-8 Rev-2 BEG. PROD. INTERVAL(1849'FNL&600'FEL,SEC.08) | 6735.30 | 6330.00 | -128.63 | 125.73 | 3412833.23 | 1525812.88 | 40°46'01.988"N |
| TIMBRO 9-59 8A-9-8 BEG. PROD. INTERVAL(1849'FNL&600'FEL,SEC.08) | 7018.00 | -128.63 | 125.73 | 3412833.26 | 1525812.93 | 40°46'01.988"N | 104°00'34.438"W |
| TIMBRO 9-59 8A-9-8 ENDING PROD. INTERVAL(1851'FNL&600'FEL,SEC.09) | 7018.00 | -49.91 | 9407.27 | 3422112.09 | 1526047.54 | 40°46'02.748"N | 103°58'33.812"W |
| TIMBRO 9-59 8A-9-8 TARGET BOTTOM HOLE(1849'FNL&300'FEL,SEC.09) | 7018.00 | -47.61 | 9707.26 | 3422412.00 | 1526054.88 | 40°46'02.770"N | 103°58'29.914"W |

| Bottom Hole Location | | | | | | | |
|----------------------|---------|--------|----------|----------------|--------------|-------------------|--------------------|
| MD (ft) | Inc (°) | Az (°) | TVD (ft) | Local N (ft) | Local E (ft) | Grid East (US ft) | Grid North (US ft) |
| 16317.50 | 90.489 | 89.553 | 6248.00 | -47.57 | 9707.23 | 3422411.97 | 1526054.92 |
| | | | | Latitude | | Longitude | |
| | | | | 40°46'02.770"N | | 103°58'29.914"W | |

| Survey Program | | | | | |
|----------------|-------------|--------------------|------------------------------------|------------------|------------------------|
| Start MD (ft) | End MD (ft) | Tool | Model | Log Name/Comment | Wellbore |
| 24.00 | 1846.00 | BHI NaviTrak | BHI NaviTrak (Rotating+Axial Corr) | | TIMBRO 9-59 8A-9-8 AWB |
| 1846.00 | 16993.15 | BHI AutoTrak Curve | BHI AutoTrak Curve (Short) | | TIMBRO 9-59 8A-9-8 PWB |

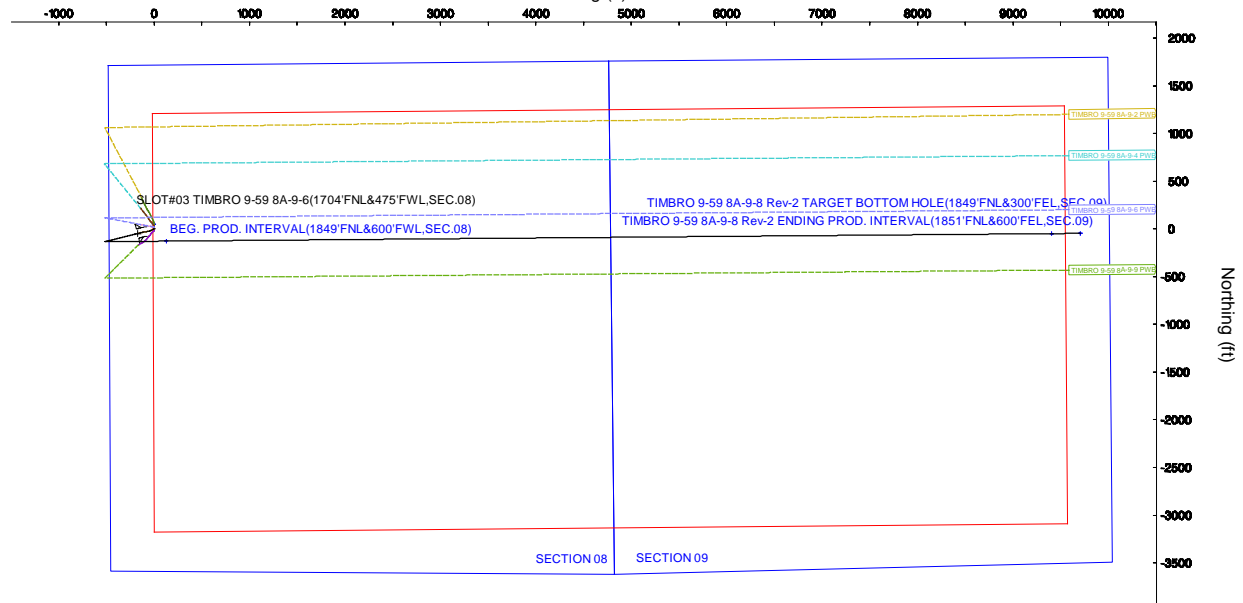


BGGM (1900.0 to 2020.0) Dip: 67.20° Field: 52495.3 nT
Magnetic North is 7.80 degrees East of True North (at 3/6/2019)

To correct azimuth from Magnetic to True add 7.80 degrees

Scale 1 inch = 500

Easting (ft)



Scale 1 inch = 500

True Vertical Depth (ft)

1500
2000
2500
3000
3500
4000
4500
5000
5500
6000
6500
7000

Vertical Section (ft)

2000
1500
1000
500
0
-500
-1000
-1500
-2000
-2500
-3000
-3500

North (ft)

Vertical Section (ft)

2000
1500
1000
500
0
-500
-1000
-1500
-2000
-2500
-3000
-3500

North (ft)

Vertical Section (ft)

2000
1500
1000
500
0
-500
-1000
-1500
-2000
-2500
-3000
-3500

North (ft)

Vertical Section (ft)

2000
1500
1000
500
0
-500
-1000
-1500
-2000
-2500
-3000
-3500

North (ft)

Vertical Section (ft)

2000
1500
1000
500
0
-500
-1000
-1500
-2000
-2500
-3000
-3500

North (ft)

Vertical Section (ft)

2000
1500
1000
500
0
-500
-1000
-1500
-2000
-2500
-3000
-3500

North (ft)

Vertical Section (ft)

2000
1500
1000
500
0
-500
-1000
-1500
-2000
-2500
-3000
-3500

North (ft)

Vertical Section (ft)

2000
1500
1000
500
0
-500
-1000
-1500
-2000
-2500
-3000
-3500

North (ft)

Vertical Section (ft)

2000
1500
1000
500
0
-500
-1000
-1500
-2000
-2500
-3000
-3500

North (ft)

Vertical Section (ft)

2000
1500
1000
500
0
-500
-1000
-1500
-2000
-2500
-3000
-3500

North (ft)

Vertical Section (ft)

2000
1500
1000
500
0
-500
-1000
-1500
-2000
-2500
-3000
-3500

North (ft)

Vertical Section (ft)

2000
1500
1000
500
0
-500
-1000
-1500
-2000
-2500
-3000
-3500

North (ft)

Vertical Section (ft)

2000
1500
1000
500
0
-500
-1000
-1500
-2000
-2500
-3000
-3500

North (ft)

Vertical Section (ft)

2000
1500
1000
500
0
-500
-1000
-1500
-2000
-2500
-3000
-3500

North (ft)

Vertical Section (ft)

2000
1500
1000
500
0
-500
-1000
-1500
-2000
-2500
-3000
-3500

North (ft)

Vertical Section (ft)

2000
1500
1000
500
0
-500
-1000
-1500
-2000
-2500
-3000
-3500

North (ft)

Vertical Section (ft)

2000
1500
1000
500
0
-500
-1000
-1500
-2000
-2500
-3000
-3500

North (ft)

Vertical Section (ft)

2000
1500
1000
500
0
-500
-1000
-1500
-2000
-2500
-3000
-3500

North (ft)

Vertical Section (ft)

2000
1500
1000
500
0
-500
-1000
-1500
-2000
-2500
-3000
-3500

North (ft)

Vertical Section (ft)

2000
1500
1000
500
0
-500
-1000
-1500
-2000
-2500
-3000
-3500

North (ft)

Vertical Section (ft)

2000
1500
1000
500
0
-500
-1000
-1500
-2000
-2500
-3000
-3500

North (ft)

Vertical Section (ft)

2000
1500
1000
500
0
-500
-1000
-1500
-2000
-2500
-3000
-3500

North (ft)

Vertical Section (ft)

2000
1500
1000
500
0
-500
-1000
-1500
-2000
-2500
-3000
-3500

North (ft)

Vertical Section (ft)

2000
1500
1000
500
0
-500
-1000
-1500
-2000
-2500
-3000
-3500

North (ft)

Vertical Section (ft)

2000
1500
1000
500
0
-500
-1000
-1500
-2000
-2500
-3000
-3500

North (ft)

Vertical Section (ft)

2000
1500
1000
500
0
-500
-1000
-1500
-2000
-2500
-3000
-3500

North (ft)

Vertical Section (ft)

2000
1500
1000
500
0
-500
-1000
-1500
-2000
-2500
-3000
-3500

North (ft)

Vertical Section (ft)

2000
1500
1000
500
0
-500
-1000
-1500
-2000
-2500
-3000
-3500

North (ft)

Vertical Section (ft)

2000
1500
1000
500
0
-500
-1000
-1500
-2000
-2500
-3000
-3500

North (ft)

Vertical Section (ft)

2000
1500
1000
500
0
-500
-1000
-1500
-2000
-2500
-3000
-3500

North (ft)

Vertical Section (ft)

2000
1500
1000
500
0
-500
-1000
-1500
-2000
-2500
-3000
-3500

North (ft)

Vertical Section (ft)

2000
1500
1000
500
0
-500
-1000
-1500
-2000
-2500
-3000
-3500

North (ft)

Vertical Section (ft)

2000
1500
1000
500
0
-500
-1000
-1500
-2000
-2500
-3000
-3500

North (ft)

Vertical Section (ft)

2000
1500
1000
500
0
-500
-1000
-1500
-2000
-2500
-3000
-3500

North (ft)

Vertical Section (ft)

2000
1500
1000
500
0
-500
-1000
-1500
-2000
-2500
-3000
-3500

North (ft)

Vertical Section (ft)

2000
1500
1000
500
0
-500
-1000
-1500
-2000
-2500
-3000
-3500

North (ft)

Vertical Section (ft)

2000
1500
1000
500
0
-500
-1000
-1500
-2000
-2500
-3000
-3500

North (ft)

Vertical Section (ft)

2000
1500
1000
500
0
-500
-1000
-1500
-2000
-2500
-3000
-3500

North (ft)

Vertical Section (ft)

2000
1500
1000
500
0
-500
-1000
-1500
-2000
-2500
-3000
-3500

North (ft)

Vertical Section (ft)

2000
1500
1000
500
0
-500
-1000
-1500
-2000
-2500
-3000
-3500

North (ft)

Vertical Section (ft)

2000
1500
1000
500
0
-500
-1000
-1500
-2000
-2500
-3000
-3500

North (ft)



Planned Wellpath Report

TIMBRO 9-59 8A-9-8 (REV-B.0) PWP

Page 1 of 10



| REFERENCE WELLPATH IDENTIFICATION | | | |
|-----------------------------------|------------------------|----------|---|
| Operator | VERDAD RESOURCES | Slot | SLOT#04 TIMBRO 9-59 8A-9-8(1720'FNL&475'FWL,SEC.08) |
| Area | COLORADO | Well | TIMBRO 9-59 8A-9-8 |
| Field | WELD COUNTY (NAD83/TN) | Wellbore | TIMBRO 9-59 8A-9-8 PWB |
| Facility | SEC.08-T09N-R59W | | |

| REPORT SETUP INFORMATION | | | |
|--------------------------|---|----------------------|---|
| Projection System | NAD83 / Lambert Colorado SP, Northern Zone (501), US feet | Software System | WellArchitect® 5.0 |
| North Reference | True | User | Guenaler |
| Scale | 0.999997 | Report Generated | 3/12/2019 at 3:21:12 PM |
| Convergence at slot | 0.97° East | Database/Source file | WA_DEN_Denver_Defn/TIMBRO_9-59_8A-9-8__REV-B.0__PWP.xml |

| WELLPATH LOCATION | | | | | | |
|-----------------------|-------------------|----------|------------------|-----------------|------------------------|-----------------|
| | Local coordinates | | Grid coordinates | | Geographic coordinates | |
| | North[ft] | East[ft] | Easting[US ft] | Northing[US ft] | Latitude | Longitude |
| Slot Location | -47.75 | 0.28 | 3412705.36 | 1525939.38 | 40°46'03.259"N | 104°00'36.072"W |
| Facility Reference Pt | | | 3412704.28 | 1525987.12 | 40°46'03.731"N | 104°00'36.076"W |
| Field Reference Pt | | | 3242930.13 | 1254608.21 | 40°01'44.490"N | 104°37'56.946"W |

| WELLPATH DATUM | | | |
|--------------------------|-----------------------|---|-------------------|
| Calculation method | Minimum curvature | Big Rig (24'KB) (RKB) to Facility Vertical Datum | 5107.00ft |
| Horizontal Reference Pt | Slot | Big Rig (24'KB) (RKB) to Mean Sea Level | 5107.00ft |
| Vertical Reference Pt | Big Rig (24'KB) (RKB) | Big Rig (24'KB) (RKB) to Ground Level at Slot (SLOT#04 TIMBRO 9-59 8A-9-8(1720'FNL&475'FWL,SEC.08)) | 5107.00ft |
| MD Reference Pt | Big Rig (24'KB) (RKB) | Section Origin | N 0.00, E 0.00 ft |
| Field Vertical Reference | Mean Sea Level | Section Azimuth | 90.28° |



Planned Wellpath Report
TIMBRO 9-59 8A-9-8 (REV-B.0) PWP
Page 2 of 10



| REFERENCE WELLPATH IDENTIFICATION | | | |
|-----------------------------------|------------------------|----------|---|
| Operator | VERDAD RESOURCES | Slot | SLOT#04 TIMBRO 9-59 8A-9-8(1720'FNL&475'FWL,SEC.08) |
| Area | COLORADO | Well | TIMBRO 9-59 8A-9-8 |
| Field | WELD COUNTY (NAD83/TN) | Wellbore | TIMBRO 9-59 8A-9-8 PWB |
| Facility | SEC.08-T09N-R59W | | |

| WELLPATH DATA (176 stations) † = interpolated/extrapolated station | | | | | | | | | | |
|--|--------------------|----------------|-------------|-------------------|---------------|--------------|----------------|-----------------|------------------|------------------------|
| MD [ft] | Inclination [°] | Azimuth [°] | TVD [ft] | Vert Sect [ft] | North [ft] | East [ft] | Latitude | Longitude | DLS [°/100ft] | Comments |
| 0.00† | 0.000 | 309.600 | 0.00 | 0.00 | 0.00 | 0.00 | 40°46'03.259"N | 104°00'36.072"W | 0.00 | |
| 24.00 | 0.000 | 309.600 | 24.00 | 0.00 | 0.00 | 0.00 | 40°46'03.259"N | 104°00'36.072"W | 0.00 | |
| 107.00 | 0.190 | 309.600 | 107.00 | -0.11 | 0.09 | -0.11 | 40°46'03.260"N | 104°00'36.073"W | 0.23 | |
| 197.00 | 0.170 | 304.970 | 197.00 | -0.33 | 0.26 | -0.33 | 40°46'03.262"N | 104°00'36.076"W | 0.03 | |
| 284.00 | 0.470 | 263.000 | 284.00 | -0.79 | 0.29 | -0.79 | 40°46'03.262"N | 104°00'36.082"W | 0.42 | |
| 376.00 | 3.510 | 226.120 | 375.93 | -3.19 | -1.71 | -3.20 | 40°46'03.242"N | 104°00'36.114"W | 3.42 | |
| 466.00 | 5.930 | 242.940 | 465.63 | -9.29 | -5.73 | -9.32 | 40°46'03.202"N | 104°00'36.193"W | 3.07 | |
| 556.00 | 7.400 | 246.250 | 555.02 | -18.72 | -10.18 | -18.77 | 40°46'03.158"N | 104°00'36.316"W | 1.69 | |
| 646.00 | 7.640 | 246.990 | 644.24 | -29.51 | -14.86 | -29.58 | 40°46'03.112"N | 104°00'36.456"W | 0.29 | |
| 736.00 | 7.220 | 246.370 | 733.49 | -40.17 | -19.46 | -40.27 | 40°46'03.067"N | 104°00'36.595"W | 0.48 | |
| 826.00 | 6.710 | 253.020 | 822.82 | -50.36 | -23.26 | -50.48 | 40°46'03.029"N | 104°00'36.728"W | 1.06 | |
| 916.00 | 7.320 | 253.840 | 912.15 | -60.88 | -26.40 | -61.01 | 40°46'02.998"N | 104°00'36.865"W | 0.69 | |
| 1006.00 | 6.720 | 264.730 | 1001.48 | -71.62 | -28.48 | -71.77 | 40°46'02.978"N | 104°00'37.005"W | 1.62 | |
| 1096.00 | 6.050 | 264.880 | 1090.92 | -81.59 | -29.38 | -81.73 | 40°46'02.969"N | 104°00'37.134"W | 0.74 | |
| 1186.00 | 5.850 | 263.160 | 1180.43 | -90.86 | -30.35 | -91.01 | 40°46'02.959"N | 104°00'37.255"W | 0.30 | |
| 1276.00 | 5.570 | 264.530 | 1269.99 | -99.76 | -31.31 | -99.91 | 40°46'02.950"N | 104°00'37.370"W | 0.35 | |
| 1366.00 | 5.250 | 262.400 | 1359.59 | -108.18 | -32.28 | -108.34 | 40°46'02.940"N | 104°00'37.480"W | 0.42 | |
| 1456.00 | 5.930 | 253.330 | 1449.16 | -116.71 | -34.15 | -116.88 | 40°46'02.922"N | 104°00'37.591"W | 1.24 | |
| 1546.00 | 5.890 | 256.660 | 1538.68 | -125.64 | -36.55 | -125.82 | 40°46'02.898"N | 104°00'37.707"W | 0.38 | |
| 1636.00 | 5.630 | 253.530 | 1628.23 | -134.36 | -38.87 | -134.55 | 40°46'02.875"N | 104°00'37.821"W | 0.45 | |
| 1726.00 | 5.330 | 254.640 | 1717.82 | -142.61 | -41.23 | -142.82 | 40°46'02.852"N | 104°00'37.928"W | 0.35 | |
| 1816.00 | 5.660 | 252.170 | 1807.40 | -150.86 | -43.69 | -151.07 | 40°46'02.827"N | 104°00'38.035"W | 0.45 | |
| 1846.00 | 6.080 | 256.530 | 1837.24 | -153.80 | -44.52 | -154.02 | 40°46'02.819"N | 104°00'38.074"W | 2.04 | Tie On; Tie to Surface |
| 1923.00 | 6.080 | 256.530 | 1913.81 | -161.73 | -46.42 | -161.96 | 40°46'02.800"N | 104°00'38.177"W | 0.00 | End of Tangent |
| 1946.00† | 6.540 | 256.434 | 1936.67 | -164.18 | -47.01 | -164.41 | 40°46'02.795"N | 104°00'38.209"W | 2.00 | |
| 2046.00† | 8.540 | 256.135 | 2035.80 | -176.91 | -50.12 | -177.16 | 40°46'02.764"N | 104°00'38.374"W | 2.00 | |
| 2063.35 | 8.886 | 256.097 | 2052.95 | -179.46 | -50.75 | -179.71 | 40°46'02.757"N | 104°00'38.408"W | 2.00 | End of 3D Arc (J) |
| 2146.00† | 8.886 | 256.097 | 2134.61 | -191.84 | -53.82 | -192.10 | 40°46'02.727"N | 104°00'38.569"W | 0.00 | |
| 2246.00† | 8.886 | 256.097 | 2233.41 | -206.81 | -57.53 | -207.10 | 40°46'02.690"N | 104°00'38.764"W | 0.00 | |
| 2346.00† | 8.886 | 256.097 | 2332.21 | -221.79 | -61.25 | -222.09 | 40°46'02.654"N | 104°00'38.958"W | 0.00 | |



Planned Wellpath Report
TIMBRO 9-59 8A-9-8 (REV-B.0) PWP
Page 3 of 10



| REFERENCE WELLPATH IDENTIFICATION | | | |
|-----------------------------------|------------------------|----------|---|
| Operator | VERDAD RESOURCES | Slot | SLOT#04 TIMBRO 9-59 8A-9-8(1720'FNL&475'FWL,SEC.08) |
| Area | COLORADO | Well | TIMBRO 9-59 8A-9-8 |
| Field | WELD COUNTY (NAD83/TN) | Wellbore | TIMBRO 9-59 8A-9-8 PWB |
| Facility | SEC.08-T09N-R59W | | |

| WELLPATH DATA (176 stations) † = interpolated/extrapolated station | | | | | | | | | | |
|--|--------------------|----------------|-------------|-------------------|---------------|--------------|----------------|-----------------|------------------|--------------------|
| MD [ft] | Inclination [°] | Azimuth [°] | TVD [ft] | Vert Sect [ft] | North [ft] | East [ft] | Latitude | Longitude | DLS [°/100ft] | Comments |
| 2446.00† | 8.886 | 256.097 | 2431.01 | -236.77 | -64.96 | -237.09 | 40°46'02.617"N | 104°00'39.153"W | 0.00 | |
| 2546.00† | 8.886 | 256.097 | 2529.81 | -251.74 | -68.67 | -252.08 | 40°46'02.580"N | 104°00'39.348"W | 0.00 | |
| 2646.00† | 8.886 | 256.097 | 2628.61 | -266.72 | -72.38 | -267.08 | 40°46'02.544"N | 104°00'39.543"W | 0.00 | |
| 2746.00† | 8.886 | 256.097 | 2727.41 | -281.70 | -76.09 | -282.07 | 40°46'02.507"N | 104°00'39.738"W | 0.00 | |
| 2846.00† | 8.886 | 256.097 | 2826.21 | -296.67 | -79.80 | -297.07 | 40°46'02.470"N | 104°00'39.933"W | 0.00 | |
| 2946.00† | 8.886 | 256.097 | 2925.01 | -311.65 | -83.52 | -312.06 | 40°46'02.434"N | 104°00'40.128"W | 0.00 | |
| 3046.00† | 8.886 | 256.097 | 3023.81 | -326.63 | -87.23 | -327.06 | 40°46'02.397"N | 104°00'40.323"W | 0.00 | |
| 3146.00† | 8.886 | 256.097 | 3122.61 | -341.60 | -90.94 | -342.05 | 40°46'02.360"N | 104°00'40.517"W | 0.00 | |
| 3246.00† | 8.886 | 256.097 | 3221.41 | -356.58 | -94.65 | -357.05 | 40°46'02.324"N | 104°00'40.712"W | 0.00 | |
| 3346.00† | 8.886 | 256.097 | 3320.21 | -371.56 | -98.36 | -372.04 | 40°46'02.287"N | 104°00'40.907"W | 0.00 | |
| 3446.00† | 8.886 | 256.097 | 3419.01 | -386.53 | -102.07 | -387.04 | 40°46'02.250"N | 104°00'41.102"W | 0.00 | |
| 3546.00† | 8.886 | 256.097 | 3517.81 | -401.51 | -105.79 | -402.03 | 40°46'02.214"N | 104°00'41.297"W | 0.00 | |
| 3646.00† | 8.886 | 256.097 | 3616.60 | -416.49 | -109.50 | -417.03 | 40°46'02.177"N | 104°00'41.492"W | 0.00 | |
| 3746.00† | 8.886 | 256.097 | 3715.40 | -431.46 | -113.21 | -432.02 | 40°46'02.140"N | 104°00'41.687"W | 0.00 | |
| 3846.00† | 8.886 | 256.097 | 3814.20 | -446.44 | -116.92 | -447.02 | 40°46'02.104"N | 104°00'41.882"W | 0.00 | |
| 3946.00† | 8.886 | 256.097 | 3913.00 | -461.42 | -120.63 | -462.01 | 40°46'02.067"N | 104°00'42.076"W | 0.00 | |
| 4046.00† | 8.886 | 256.097 | 4011.80 | -476.39 | -124.35 | -477.01 | 40°46'02.030"N | 104°00'42.271"W | 0.00 | |
| 4085.54 | 8.886 | 256.097 | 4050.86 | -482.31 | -125.81 | -482.94 | 40°46'02.016"N | 104°00'42.348"W | 0.00 | End of Tangent (J) |
| 4146.00† | 7.677 | 256.097 | 4110.70 | -490.76 | -127.91 | -491.39 | 40°46'01.995"N | 104°00'42.458"W | 2.00 | |
| 4246.00† | 5.677 | 256.097 | 4210.01 | -502.03 | -130.70 | -502.68 | 40°46'01.968"N | 104°00'42.605"W | 2.00 | |
| 4346.00† | 3.677 | 256.097 | 4309.68 | -509.94 | -132.66 | -510.59 | 40°46'01.948"N | 104°00'42.708"W | 2.00 | |
| 4446.00† | 1.677 | 256.097 | 4409.56 | -514.46 | -133.78 | -515.13 | 40°46'01.937"N | 104°00'42.767"W | 2.00 | |
| 4529.85 | 0.000 | 89.514 | 4493.40 | -515.65 | -134.08 | -516.32 | 40°46'01.934"N | 104°00'42.782"W | 2.00 | End of Drop (XS) |
| 4546.00† | 0.000 | 89.514 | 4509.55 | -515.65 | -134.08 | -516.32 | 40°46'01.934"N | 104°00'42.782"W | 0.00 | |
| 4646.00† | 0.000 | 89.514 | 4609.55 | -515.65 | -134.08 | -516.32 | 40°46'01.934"N | 104°00'42.782"W | 0.00 | |
| 4746.00† | 0.000 | 89.514 | 4709.55 | -515.65 | -134.08 | -516.32 | 40°46'01.934"N | 104°00'42.782"W | 0.00 | |
| 4846.00† | 0.000 | 89.514 | 4809.55 | -515.65 | -134.08 | -516.32 | 40°46'01.934"N | 104°00'42.782"W | 0.00 | |
| 4946.00† | 0.000 | 89.514 | 4909.55 | -515.65 | -134.08 | -516.32 | 40°46'01.934"N | 104°00'42.782"W | 0.00 | |
| 5046.00† | 0.000 | 89.514 | 5009.55 | -515.65 | -134.08 | -516.32 | 40°46'01.934"N | 104°00'42.782"W | 0.00 | |
| 5146.00† | 0.000 | 89.514 | 5109.55 | -515.65 | -134.08 | -516.32 | 40°46'01.934"N | 104°00'42.782"W | 0.00 | |



Planned Wellpath Report
TIMBRO 9-59 8A-9-8 (REV-B.0) PWP
Page 4 of 10



| REFERENCE WELLPATH IDENTIFICATION | | | |
|-----------------------------------|------------------------|----------|---|
| Operator | VERDAD RESOURCES | Slot | SLOT#04 TIMBRO 9-59 8A-9-8(1720'FNL&475'FWL,SEC.08) |
| Area | COLORADO | Well | TIMBRO 9-59 8A-9-8 |
| Field | WELD COUNTY (NAD83/TN) | Wellbore | TIMBRO 9-59 8A-9-8 PWB |
| Facility | SEC.08-T09N-R59W | | |

| WELLPATH DATA (176 stations) † = interpolated/extrapolated station | | | | | | | | | | |
|--|--------------------|----------------|-------------|-------------------|---------------|--------------|----------------|-----------------|------------------|---------------------|
| MD [ft] | Inclination [°] | Azimuth [°] | TVD [ft] | Vert Sect [ft] | North [ft] | East [ft] | Latitude | Longitude | DLS [°/100ft] | Comments |
| 5246.00† | 0.000 | 89.514 | 5209.55 | -515.65 | -134.08 | -516.32 | 40°46'01.934"N | 104°00'42.782"W | 0.00 | |
| 5346.00† | 0.000 | 89.514 | 5309.55 | -515.65 | -134.08 | -516.32 | 40°46'01.934"N | 104°00'42.782"W | 0.00 | |
| 5446.00† | 0.000 | 89.514 | 5409.55 | -515.65 | -134.08 | -516.32 | 40°46'01.934"N | 104°00'42.782"W | 0.00 | |
| 5546.00† | 0.000 | 89.514 | 5509.55 | -515.65 | -134.08 | -516.32 | 40°46'01.934"N | 104°00'42.782"W | 0.00 | |
| 5646.00† | 0.000 | 89.514 | 5609.55 | -515.65 | -134.08 | -516.32 | 40°46'01.934"N | 104°00'42.782"W | 0.00 | |
| 5729.85 | 0.000 | 89.514 | 5693.40 | -515.65 | -134.08 | -516.32 | 40°46'01.934"N | 104°00'42.782"W | 0.00 | End of Tangent (XS) |
| 5746.00† | 1.453 | 89.514 | 5709.55 | -515.45 | -134.07 | -516.11 | 40°46'01.934"N | 104°00'42.780"W | 9.00 | |
| 5846.00† | 10.453 | 89.514 | 5808.91 | -505.09 | -133.99 | -505.75 | 40°46'01.935"N | 104°00'42.645"W | 9.00 | |
| 5946.00† | 19.453 | 89.514 | 5905.42 | -479.31 | -133.77 | -479.98 | 40°46'01.937"N | 104°00'42.310"W | 9.00 | |
| 6046.00† | 28.453 | 89.514 | 5996.71 | -438.76 | -133.42 | -439.42 | 40°46'01.941"N | 104°00'41.783"W | 9.00 | |
| 6146.00† | 37.453 | 89.514 | 6080.54 | -384.43 | -132.96 | -385.08 | 40°46'01.945"N | 104°00'41.077"W | 9.00 | |
| 6246.00† | 46.453 | 89.514 | 6154.83 | -317.65 | -132.40 | -318.30 | 40°46'01.951"N | 104°00'40.209"W | 9.00 | |
| 6346.00† | 55.453 | 89.514 | 6217.76 | -240.07 | -131.74 | -240.72 | 40°46'01.957"N | 104°00'39.200"W | 9.00 | |
| 6446.00† | 64.453 | 89.514 | 6267.78 | -153.61 | -131.00 | -154.25 | 40°46'01.965"N | 104°00'38.077"W | 9.00 | |
| 6546.00† | 73.453 | 89.514 | 6303.66 | -60.38 | -130.21 | -61.02 | 40°46'01.972"N | 104°00'36.865"W | 9.00 | |
| 6646.00† | 82.453 | 89.514 | 6324.51 | 37.31 | -129.39 | 36.67 | 40°46'01.981"N | 104°00'35.595"W | 9.00 | |
| 6735.30 | 90.490 | 89.514 | 6330.00† | 126.36 | -128.63 | 125.73 | 40°46'01.988"N | 104°00'34.438"W | 9.00 | Build (XS) |
| 6746.00† | 90.490 | 89.514 | 6329.91 | 137.05 | -128.54 | 136.43 | 40°46'01.989"N | 104°00'34.299"W | 0.00 | |
| 6846.00† | 90.490 | 89.514 | 6329.05 | 237.04 | -127.69 | 236.42 | 40°46'01.997"N | 104°00'32.999"W | 0.00 | |
| 6946.00† | 90.490 | 89.514 | 6328.20 | 337.03 | -126.84 | 336.41 | 40°46'02.006"N | 104°00'31.700"W | 0.00 | |
| 7046.00† | 90.490 | 89.514 | 6327.34 | 437.02 | -126.00 | 436.40 | 40°46'02.014"N | 104°00'30.400"W | 0.00 | |
| 7146.00† | 90.490 | 89.514 | 6326.49 | 537.00 | -125.15 | 536.40 | 40°46'02.022"N | 104°00'29.101"W | 0.00 | |
| 7246.00† | 90.490 | 89.514 | 6325.63 | 636.99 | -124.30 | 636.39 | 40°46'02.031"N | 104°00'27.801"W | 0.00 | |
| 7346.00† | 90.490 | 89.514 | 6324.77 | 736.98 | -123.45 | 736.38 | 40°46'02.039"N | 104°00'26.502"W | 0.00 | |
| 7446.00† | 90.490 | 89.514 | 6323.92 | 836.97 | -122.60 | 836.37 | 40°46'02.047"N | 104°00'25.202"W | 0.00 | |
| 7546.00† | 90.490 | 89.514 | 6323.06 | 936.95 | -121.76 | 936.37 | 40°46'02.056"N | 104°00'23.903"W | 0.00 | |
| 7646.00† | 90.490 | 89.514 | 6322.21 | 1036.94 | -120.91 | 1036.36 | 40°46'02.064"N | 104°00'22.603"W | 0.00 | |
| 7746.00† | 90.490 | 89.514 | 6321.35 | 1136.93 | -120.06 | 1136.35 | 40°46'02.072"N | 104°00'21.304"W | 0.00 | |
| 7846.00† | 90.490 | 89.514 | 6320.49 | 1236.92 | -119.21 | 1236.35 | 40°46'02.081"N | 104°00'20.004"W | 0.00 | |
| 7946.00† | 90.490 | 89.514 | 6319.64 | 1336.90 | -118.36 | 1336.34 | 40°46'02.089"N | 104°00'18.705"W | 0.00 | |



Planned Wellpath Report
TIMBRO 9-59 8A-9-8 (REV-B.0) PWP
Page 5 of 10



| REFERENCE WELLPATH IDENTIFICATION | | | |
|-----------------------------------|------------------------|----------|---|
| Operator | VERDAD RESOURCES | Slot | SLOT#04 TIMBRO 9-59 8A-9-8(1720'FNL&475'FWL,SEC.08) |
| Area | COLORADO | Well | TIMBRO 9-59 8A-9-8 |
| Field | WELD COUNTY (NAD83/TN) | Wellbore | TIMBRO 9-59 8A-9-8 PWB |
| Facility | SEC.08-T09N-R59W | | |

| WELLPATH DATA (176 stations) † = interpolated/extrapolated station | | | | | | | | | | |
|--|--------------------|----------------|-------------|-------------------|---------------|--------------|----------------|-----------------|------------------|----------|
| MD [ft] | Inclination [°] | Azimuth [°] | TVD [ft] | Vert Sect [ft] | North [ft] | East [ft] | Latitude | Longitude | DLS [°/100ft] | Comments |
| 8046.00† | 90.490 | 89.514 | 6318.78 | 1436.89 | -117.52 | 1436.33 | 40°46'02.097"N | 104°00'17.405"W | 0.00 | |
| 8146.00† | 90.490 | 89.514 | 6317.93 | 1536.88 | -116.67 | 1536.32 | 40°46'02.106"N | 104°00'16.106"W | 0.00 | |
| 8246.00† | 90.490 | 89.514 | 6317.07 | 1636.86 | -115.82 | 1636.32 | 40°46'02.114"N | 104°00'14.806"W | 0.00 | |
| 8346.00† | 90.490 | 89.514 | 6316.22 | 1736.85 | -114.97 | 1736.31 | 40°46'02.122"N | 104°00'13.506"W | 0.00 | |
| 8446.00† | 90.490 | 89.514 | 6315.36 | 1836.84 | -114.12 | 1836.30 | 40°46'02.131"N | 104°00'12.207"W | 0.00 | |
| 8546.00† | 90.490 | 89.514 | 6314.50 | 1936.83 | -113.28 | 1936.29 | 40°46'02.139"N | 104°00'10.907"W | 0.00 | |
| 8646.00† | 90.490 | 89.514 | 6313.65 | 2036.81 | -112.43 | 2036.29 | 40°46'02.147"N | 104°00'09.608"W | 0.00 | |
| 8746.00† | 90.490 | 89.514 | 6312.79 | 2136.80 | -111.58 | 2136.28 | 40°46'02.156"N | 104°00'08.308"W | 0.00 | |
| 8846.00† | 90.490 | 89.514 | 6311.94 | 2236.79 | -110.73 | 2236.27 | 40°46'02.164"N | 104°00'07.009"W | 0.00 | |
| 8946.00† | 90.490 | 89.514 | 6311.08 | 2336.78 | -109.88 | 2336.27 | 40°46'02.172"N | 104°00'05.709"W | 0.00 | |
| 9046.00† | 90.490 | 89.514 | 6310.22 | 2436.76 | -109.03 | 2436.26 | 40°46'02.180"N | 104°00'04.410"W | 0.00 | |
| 9146.00† | 90.490 | 89.514 | 6309.37 | 2536.75 | -108.19 | 2536.25 | 40°46'02.189"N | 104°00'03.110"W | 0.00 | |
| 9246.00† | 90.490 | 89.514 | 6308.51 | 2636.74 | -107.34 | 2636.24 | 40°46'02.197"N | 104°00'01.811"W | 0.00 | |
| 9346.00† | 90.490 | 89.514 | 6307.66 | 2736.73 | -106.49 | 2736.24 | 40°46'02.205"N | 104°00'00.511"W | 0.00 | |
| 9446.00† | 90.490 | 89.514 | 6306.80 | 2836.71 | -105.64 | 2836.23 | 40°46'02.214"N | 103°59'59.212"W | 0.00 | |
| 9546.00† | 90.490 | 89.514 | 6305.95 | 2936.70 | -104.79 | 2936.22 | 40°46'02.222"N | 103°59'57.912"W | 0.00 | |
| 9646.00† | 90.490 | 89.514 | 6305.09 | 3036.69 | -103.95 | 3036.22 | 40°46'02.230"N | 103°59'56.613"W | 0.00 | |
| 9746.00† | 90.490 | 89.514 | 6304.23 | 3136.68 | -103.10 | 3136.21 | 40°46'02.238"N | 103°59'55.313"W | 0.00 | |
| 9846.00† | 90.490 | 89.514 | 6303.38 | 3236.66 | -102.25 | 3236.20 | 40°46'02.247"N | 103°59'54.013"W | 0.00 | |
| 9946.00† | 90.490 | 89.514 | 6302.52 | 3336.65 | -101.40 | 3336.19 | 40°46'02.255"N | 103°59'52.714"W | 0.00 | |
| 10046.00† | 90.490 | 89.514 | 6301.67 | 3436.64 | -100.55 | 3436.19 | 40°46'02.263"N | 103°59'51.414"W | 0.00 | |
| 10146.00† | 90.490 | 89.514 | 6300.81 | 3536.63 | -99.71 | 3536.18 | 40°46'02.271"N | 103°59'50.115"W | 0.00 | |
| 10246.00† | 90.490 | 89.514 | 6299.95 | 3636.61 | -98.86 | 3636.17 | 40°46'02.280"N | 103°59'48.815"W | 0.00 | |
| 10346.00† | 90.490 | 89.514 | 6299.10 | 3736.60 | -98.01 | 3736.16 | 40°46'02.288"N | 103°59'47.516"W | 0.00 | |
| 10446.00† | 90.490 | 89.514 | 6298.24 | 3836.59 | -97.16 | 3836.16 | 40°46'02.296"N | 103°59'46.216"W | 0.00 | |
| 10546.00† | 90.490 | 89.514 | 6297.39 | 3936.57 | -96.31 | 3936.15 | 40°46'02.304"N | 103°59'44.917"W | 0.00 | |
| 10646.00† | 90.490 | 89.514 | 6296.53 | 4036.56 | -95.47 | 4036.14 | 40°46'02.312"N | 103°59'43.617"W | 0.00 | |
| 10746.00† | 90.490 | 89.514 | 6295.68 | 4136.55 | -94.62 | 4136.14 | 40°46'02.321"N | 103°59'42.318"W | 0.00 | |
| 10846.00† | 90.490 | 89.514 | 6294.82 | 4236.54 | -93.77 | 4236.13 | 40°46'02.329"N | 103°59'41.018"W | 0.00 | |
| 10946.00† | 90.490 | 89.514 | 6293.96 | 4336.52 | -92.92 | 4336.12 | 40°46'02.337"N | 103°59'39.719"W | 0.00 | |



Planned Wellpath Report
TIMBRO 9-59 8A-9-8 (REV-B.0) PWP
Page 6 of 10



| REFERENCE WELLPATH IDENTIFICATION | | | |
|-----------------------------------|------------------------|----------|---|
| Operator | VERDAD RESOURCES | Slot | SLOT#04 TIMBRO 9-59 8A-9-8(1720'FNL&475'FWL,SEC.08) |
| Area | COLORADO | Well | TIMBRO 9-59 8A-9-8 |
| Field | WELD COUNTY (NAD83/TN) | Wellbore | TIMBRO 9-59 8A-9-8 PWB |
| Facility | SEC.08-T09N-R59W | | |

| WELLPATH DATA (176 stations) † = interpolated/extrapolated station | | | | | | | | | | |
|--|--------------------|----------------|-------------|-------------------|---------------|--------------|----------------|-----------------|------------------|----------|
| MD [ft] | Inclination [°] | Azimuth [°] | TVD [ft] | Vert Sect [ft] | North [ft] | East [ft] | Latitude | Longitude | DLS [°/100ft] | Comments |
| 11046.00† | 90.490 | 89.514 | 6293.11 | 4436.51 | -92.07 | 4436.11 | 40°46'02.345"N | 103°59'38.419"W | 0.00 | |
| 11146.00† | 90.490 | 89.514 | 6292.25 | 4536.50 | -91.23 | 4536.11 | 40°46'02.353"N | 103°59'37.120"W | 0.00 | |
| 11246.00† | 90.490 | 89.514 | 6291.40 | 4636.49 | -90.38 | 4636.10 | 40°46'02.362"N | 103°59'35.820"W | 0.00 | |
| 11346.00† | 90.490 | 89.514 | 6290.54 | 4736.47 | -89.53 | 4736.09 | 40°46'02.370"N | 103°59'34.520"W | 0.00 | |
| 11446.00† | 90.490 | 89.514 | 6289.68 | 4836.46 | -88.68 | 4836.08 | 40°46'02.378"N | 103°59'33.221"W | 0.00 | |
| 11546.00† | 90.490 | 89.514 | 6288.83 | 4936.45 | -87.83 | 4936.08 | 40°46'02.386"N | 103°59'31.921"W | 0.00 | |
| 11646.00† | 90.490 | 89.514 | 6287.97 | 5036.44 | -86.99 | 5036.07 | 40°46'02.394"N | 103°59'30.622"W | 0.00 | |
| 11746.00† | 90.490 | 89.514 | 6287.12 | 5136.42 | -86.14 | 5136.06 | 40°46'02.403"N | 103°59'29.322"W | 0.00 | |
| 11846.00† | 90.490 | 89.514 | 6286.26 | 5236.41 | -85.29 | 5236.06 | 40°46'02.411"N | 103°59'28.023"W | 0.00 | |
| 11946.00† | 90.490 | 89.514 | 6285.41 | 5336.40 | -84.44 | 5336.05 | 40°46'02.419"N | 103°59'26.723"W | 0.00 | |
| 12046.00† | 90.490 | 89.514 | 6284.55 | 5436.39 | -83.59 | 5436.04 | 40°46'02.427"N | 103°59'25.424"W | 0.00 | |
| 12146.00† | 90.490 | 89.514 | 6283.69 | 5536.37 | -82.75 | 5536.03 | 40°46'02.435"N | 103°59'24.124"W | 0.00 | |
| 12246.00† | 90.490 | 89.514 | 6282.84 | 5636.36 | -81.90 | 5636.03 | 40°46'02.443"N | 103°59'22.825"W | 0.00 | |
| 12346.00† | 90.490 | 89.514 | 6281.98 | 5736.35 | -81.05 | 5736.02 | 40°46'02.452"N | 103°59'21.525"W | 0.00 | |
| 12446.00† | 90.490 | 89.514 | 6281.13 | 5836.33 | -80.20 | 5836.01 | 40°46'02.460"N | 103°59'20.226"W | 0.00 | |
| 12546.00† | 90.490 | 89.514 | 6280.27 | 5936.32 | -79.35 | 5936.00 | 40°46'02.468"N | 103°59'18.926"W | 0.00 | |
| 12646.00† | 90.490 | 89.514 | 6279.41 | 6036.31 | -78.51 | 6036.00 | 40°46'02.476"N | 103°59'17.626"W | 0.00 | |
| 12746.00† | 90.490 | 89.514 | 6278.56 | 6136.30 | -77.66 | 6135.99 | 40°46'02.484"N | 103°59'16.327"W | 0.00 | |
| 12846.00† | 90.490 | 89.514 | 6277.70 | 6236.28 | -76.81 | 6235.98 | 40°46'02.492"N | 103°59'15.027"W | 0.00 | |
| 12946.00† | 90.490 | 89.514 | 6276.85 | 6336.27 | -75.96 | 6335.98 | 40°46'02.500"N | 103°59'13.728"W | 0.00 | |
| 13046.00† | 90.490 | 89.514 | 6275.99 | 6436.26 | -75.11 | 6435.97 | 40°46'02.508"N | 103°59'12.428"W | 0.00 | |
| 13146.00† | 90.490 | 89.514 | 6275.14 | 6536.25 | -74.27 | 6535.96 | 40°46'02.517"N | 103°59'11.129"W | 0.00 | |
| 13246.00† | 90.490 | 89.514 | 6274.28 | 6636.23 | -73.42 | 6635.95 | 40°46'02.525"N | 103°59'09.829"W | 0.00 | |
| 13346.00† | 90.490 | 89.514 | 6273.42 | 6736.22 | -72.57 | 6735.95 | 40°46'02.533"N | 103°59'08.530"W | 0.00 | |
| 13446.00† | 90.490 | 89.514 | 6272.57 | 6836.21 | -71.72 | 6835.94 | 40°46'02.541"N | 103°59'07.230"W | 0.00 | |
| 13546.00† | 90.490 | 89.514 | 6271.71 | 6936.20 | -70.87 | 6935.93 | 40°46'02.549"N | 103°59'05.931"W | 0.00 | |
| 13646.00† | 90.490 | 89.514 | 6270.86 | 7036.18 | -70.03 | 7035.92 | 40°46'02.557"N | 103°59'04.631"W | 0.00 | |
| 13746.00† | 90.490 | 89.514 | 6270.00 | 7136.17 | -69.18 | 7135.92 | 40°46'02.565"N | 103°59'03.332"W | 0.00 | |
| 13846.00† | 90.490 | 89.514 | 6269.14 | 7236.16 | -68.33 | 7235.91 | 40°46'02.573"N | 103°59'02.032"W | 0.00 | |
| 13946.00† | 90.490 | 89.514 | 6268.29 | 7336.15 | -67.48 | 7335.90 | 40°46'02.581"N | 103°59'00.733"W | 0.00 | |



Planned Wellpath Report
TIMBRO 9-59 8A-9-8 (REV-B.0) PWP
Page 7 of 10



| REFERENCE WELLPATH IDENTIFICATION | | | |
|-----------------------------------|------------------------|----------|---|
| Operator | VERDAD RESOURCES | Slot | SLOT#04 TIMBRO 9-59 8A-9-8(1720'FNL&475'FWL,SEC.08) |
| Area | COLORADO | Well | TIMBRO 9-59 8A-9-8 |
| Field | WELD COUNTY (NAD83/TN) | Wellbore | TIMBRO 9-59 8A-9-8 PWB |
| Facility | SEC.08-T09N-R59W | | |

| WELLPATH DATA (176 stations) † = interpolated/extrapolated station | | | | | | | | | | |
|--|--------------------|----------------|----------------------|-------------------|---------------|--------------|----------------|-----------------|------------------|---------------------|
| MD [ft] | Inclination [°] | Azimuth [°] | TVD [ft] | Vert Sect [ft] | North [ft] | East [ft] | Latitude | Longitude | DLS [°/100ft] | Comments |
| 14046.00† | 90.490 | 89.514 | 6267.43 | 7436.13 | -66.63 | 7435.90 | 40°46'02.589"N | 103°58'59.433"W | 0.00 | |
| 14146.00† | 90.490 | 89.514 | 6266.58 | 7536.12 | -65.79 | 7535.89 | 40°46'02.598"N | 103°58'58.133"W | 0.00 | |
| 14246.00† | 90.490 | 89.514 | 6265.72 | 7636.11 | -64.94 | 7635.88 | 40°46'02.606"N | 103°58'56.834"W | 0.00 | |
| 14346.00† | 90.490 | 89.514 | 6264.87 | 7736.10 | -64.09 | 7735.87 | 40°46'02.614"N | 103°58'55.534"W | 0.00 | |
| 14446.00† | 90.490 | 89.514 | 6264.01 | 7836.08 | -63.24 | 7835.87 | 40°46'02.622"N | 103°58'54.235"W | 0.00 | |
| 14546.00† | 90.490 | 89.514 | 6263.15 | 7936.07 | -62.39 | 7935.86 | 40°46'02.630"N | 103°58'52.935"W | 0.00 | |
| 14646.00† | 90.490 | 89.514 | 6262.30 | 8036.06 | -61.55 | 8035.85 | 40°46'02.638"N | 103°58'51.636"W | 0.00 | |
| 14746.00† | 90.490 | 89.514 | 6261.44 | 8136.04 | -60.70 | 8135.84 | 40°46'02.646"N | 103°58'50.336"W | 0.00 | |
| 14846.00† | 90.490 | 89.514 | 6260.59 | 8236.03 | -59.85 | 8235.84 | 40°46'02.654"N | 103°58'49.037"W | 0.00 | |
| 14946.00† | 90.490 | 89.514 | 6259.73 | 8336.02 | -59.00 | 8335.83 | 40°46'02.662"N | 103°58'47.737"W | 0.00 | |
| 15046.00† | 90.490 | 89.514 | 6258.87 | 8436.01 | -58.15 | 8435.82 | 40°46'02.670"N | 103°58'46.438"W | 0.00 | |
| 15146.00† | 90.490 | 89.514 | 6258.02 | 8535.99 | -57.30 | 8535.82 | 40°46'02.678"N | 103°58'45.138"W | 0.00 | |
| 15246.00† | 90.490 | 89.514 | 6257.16 | 8635.98 | -56.46 | 8635.81 | 40°46'02.686"N | 103°58'43.839"W | 0.00 | |
| 15346.00† | 90.490 | 89.514 | 6256.31 | 8735.97 | -55.61 | 8735.80 | 40°46'02.694"N | 103°58'42.539"W | 0.00 | |
| 15446.00† | 90.490 | 89.514 | 6255.45 | 8835.96 | -54.76 | 8835.79 | 40°46'02.702"N | 103°58'41.239"W | 0.00 | |
| 15546.00† | 90.490 | 89.514 | 6254.60 | 8935.94 | -53.91 | 8935.79 | 40°46'02.710"N | 103°58'39.940"W | 0.00 | |
| 15646.00† | 90.490 | 89.514 | 6253.74 | 9035.93 | -53.06 | 9035.78 | 40°46'02.718"N | 103°58'38.640"W | 0.00 | |
| 15746.00† | 90.490 | 89.514 | 6252.88 | 9135.92 | -52.22 | 9135.77 | 40°46'02.726"N | 103°58'37.341"W | 0.00 | |
| 15846.00† | 90.490 | 89.514 | 6252.03 | 9235.91 | -51.37 | 9235.77 | 40°46'02.734"N | 103°58'36.041"W | 0.00 | |
| 15946.00† | 90.490 | 89.514 | 6251.17 | 9335.89 | -50.52 | 9335.76 | 40°46'02.742"N | 103°58'34.742"W | 0.00 | |
| 16017.54 | 90.490 | 89.514 | 6250.56 ² | 9407.43 | -49.91 | 9407.30 | 40°46'02.748"N | 103°58'33.812"W | 0.00 | End of Tangent (XS) |
| 16019.47 | 90.489 | 89.553 | 6250.54 | 9409.35 | -49.90 | 9409.22 | 40°46'02.748"N | 103°58'33.787"W | 2.00 | End of 3D Arc (J) |
| 16046.00† | 90.489 | 89.553 | 6250.32 | 9435.88 | -49.69 | 9435.75 | 40°46'02.750"N | 103°58'33.442"W | 0.00 | |
| 16146.00† | 90.489 | 89.553 | 6249.46 | 9535.87 | -48.91 | 9535.74 | 40°46'02.757"N | 103°58'32.143"W | 0.00 | |
| 16246.00† | 90.489 | 89.553 | 6248.61 | 9635.86 | -48.13 | 9635.74 | 40°46'02.765"N | 103°58'30.843"W | 0.00 | |
| 16317.50 | 90.489 | 89.553 | 6248.00 ³ | 9707.34 | -47.57 | 9707.23 | 40°46'02.770"N | 103°58'29.914"W | 0.00 | End of Tangent (J) |



Planned Wellpath Report

TIMBRO 9-59 8A-9-8 (REV-B.0) PWP

Page 9 of 10



| REFERENCE WELLPATH IDENTIFICATION | | | |
|-----------------------------------|------------------------|----------|---|
| Operator | VERDAD RESOURCES | Slot | SLOT#04 TIMBRO 9-59 8A-9-8(1720'FNL&475'FWL,SEC.08) |
| Area | COLORADO | Well | TIMBRO 9-59 8A-9-8 |
| Field | WELD COUNTY (NAD83/TN) | Wellbore | TIMBRO 9-59 8A-9-8 PWB |
| Facility | SEC.08-T09N-R59W | | |

| SURVEY PROGRAM - Ref Wellbore: TIMBRO 9-59 8A-9-8 PWB Ref Wellpath: TIMBRO 9-59 8A-9-8 (REV-B.0) PWP | | | | |
|---|----------------|------------------------------------|------------------|------------------------|
| Start MD [ft] | End MD [ft] | Positional Uncertainty Model | Log Name/Comment | Wellbore |
| 24.00 | 1846.00 | BHI NaviTrak (Rotating+Axial Corr) | | TIMBRO 9-59 8A-9-8 AWB |
| 1846.00 | 16993.15 | BHI AutoTrak Curve (Short) | | TIMBRO 9-59 8A-9-8 PWB |



Planned Wellpath Report

TIMBRO 9-59 8A-9-8 (REV-B.0) PWP

Page 10 of 10



| REFERENCE WELLPATH IDENTIFICATION | | | |
|-----------------------------------|------------------------|----------|---|
| Operator | VERDAD RESOURCES | Slot | SLOT#04 TIMBRO 9-59 8A-9-8(1720'FNL&475'FWL,SEC.08) |
| Area | COLORADO | Well | TIMBRO 9-59 8A-9-8 |
| Field | WELD COUNTY (NAD83/TN) | Wellbore | TIMBRO 9-59 8A-9-8 PWB |
| Facility | SEC.08-T09N-R59W | | |

| WELLPATH COMMENTS | | | | |
|-------------------|--------------------|----------------|-------------|----------------|
| MD [ft] | Inclination [°] | Azimuth [°] | TVD [ft] | Comment |
| 1846.00 | 6.080 | 256.530 | 1837.24 | Tie to Surface |

| DESIGN COMMENTS | | | | |
|-----------------|--------------------|----------------|-------------|---------------------|
| MD [ft] | Inclination [°] | Azimuth [°] | TVD [ft] | Comment |
| 1846.00 | 6.080 | 256.530 | 1837.24 | Tie On |
| 1923.00 | 6.080 | 256.530 | 1913.81 | End of Tangent |
| 2063.35 | 8.886 | 256.097 | 2052.95 | End of 3D Arc (J) |
| 4085.54 | 8.886 | 256.097 | 4050.86 | End of Tangent (J) |
| 4529.85 | 0.000 | 89.514 | 4493.40 | End of Drop (XS) |
| 5729.85 | 0.000 | 89.514 | 5693.40 | End of Tangent (XS) |
| 6735.30 | 90.490 | 89.514 | 6330.00 | Build (XS) |
| 16017.54 | 90.490 | 89.514 | 6250.56 | End of Tangent (XS) |
| 16019.47 | 90.489 | 89.553 | 6250.54 | End of 3D Arc (J) |
| 16317.50 | 90.489 | 89.553 | 6248.00 | End of Tangent (J) |