

**Inspection Photos**  
**Location Name: Handke #3**  
**Location ID: 428424**



**Photo 1 WH no WH sign**



**Photo 2 TNK BTRY**

**Inspection Photos**  
**Location Name: Handke #3**  
**Location ID: 428424**



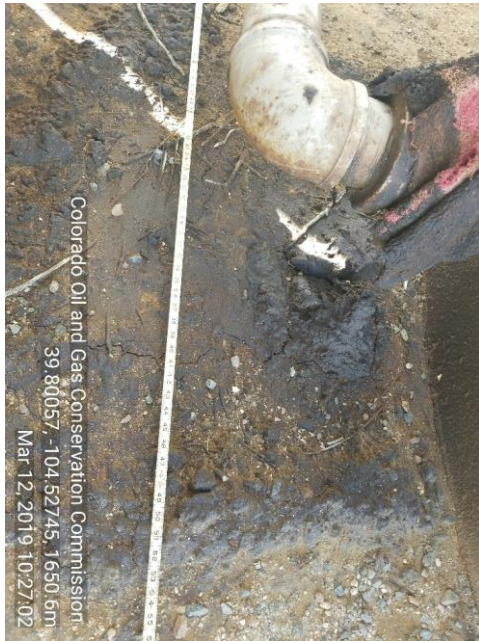
**Photo 3 Mechanical and stained soil between crude oil tanks**



**Photo 4 Mechanical and stained soil between crude oil tanks**



**Inspection Photos**  
**Location Name: Handke #3**  
**Location ID: 428424**

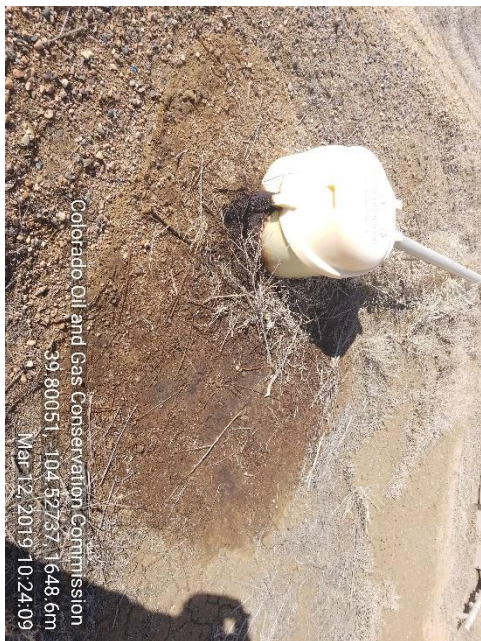


**Photo 5 Mechanical and stained soil between crude oil tanks. Approximately 55in long**



**Photo 6 Mechanical and stained soil between crude oil tanks. Approximately 41in wide**

**Inspection Photos**  
**Location Name: Handke #3**  
**Location ID: 428424**



**Photo 7 Mechanical and stained soil around crude oil load out line spill container**



**Photo 8 Mechanical and stained soil around crude oil load out line spill container. Approximately 71in long by 71 in wide**



**Inspection Photos**  
**Location Name: Handke #3**  
**Location ID: 428424**



**Photo 9 H<sub>2</sub>O production tank has no bullplug on load out line.**



**Photo 10 Crude oil tanks have no bullplugs on load lines**

**Inspection Photos**  
**Location Name: Handke #3**  
**Location ID: 428424**



**Photo 11 Weeds around TNK BTRY**



**Photo 12 Weeds around separators and separator house.**