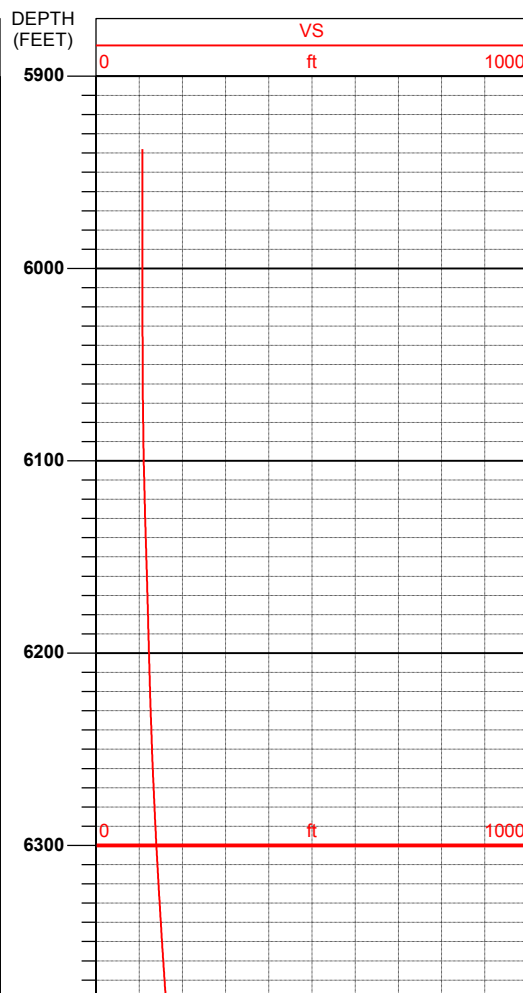
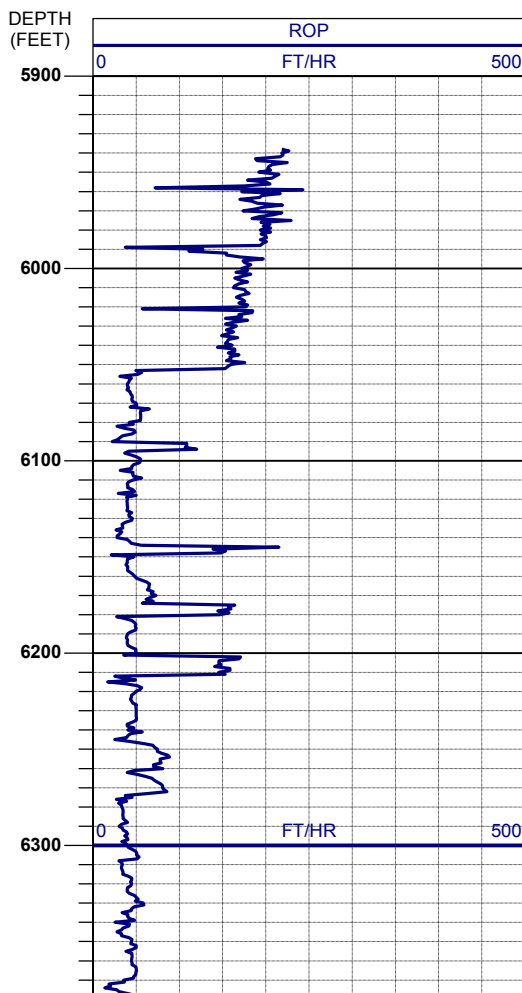
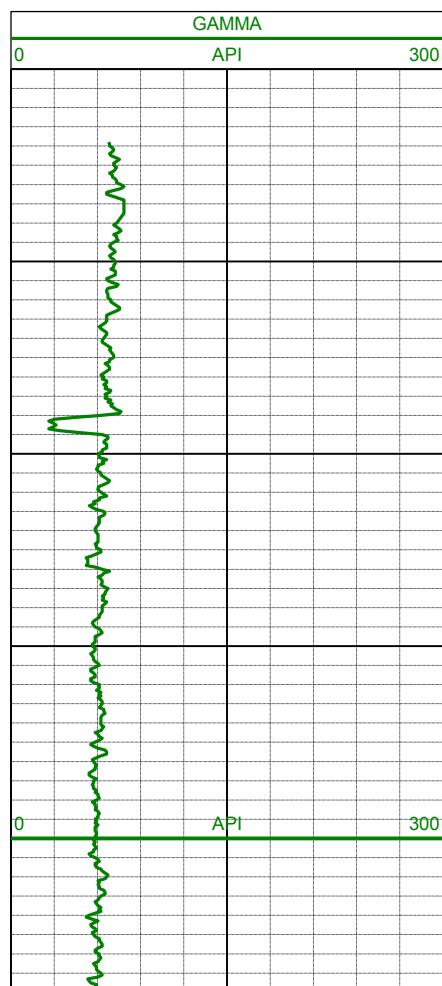
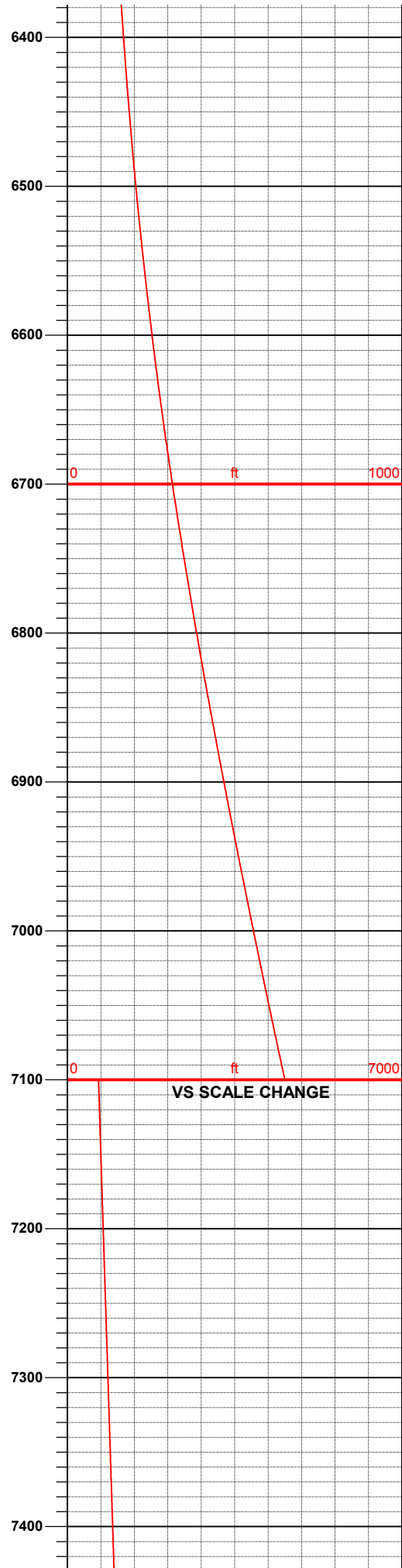
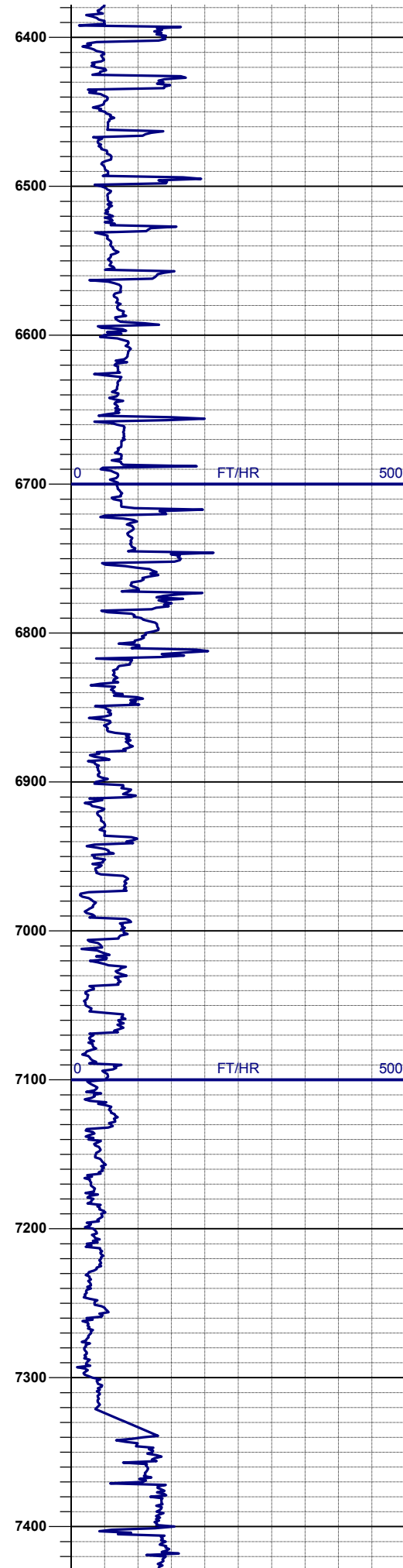
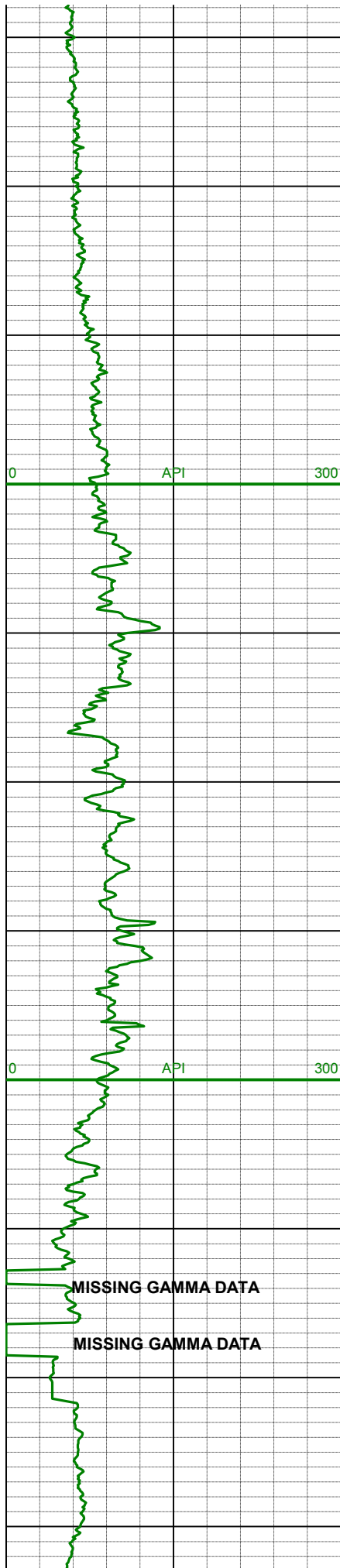
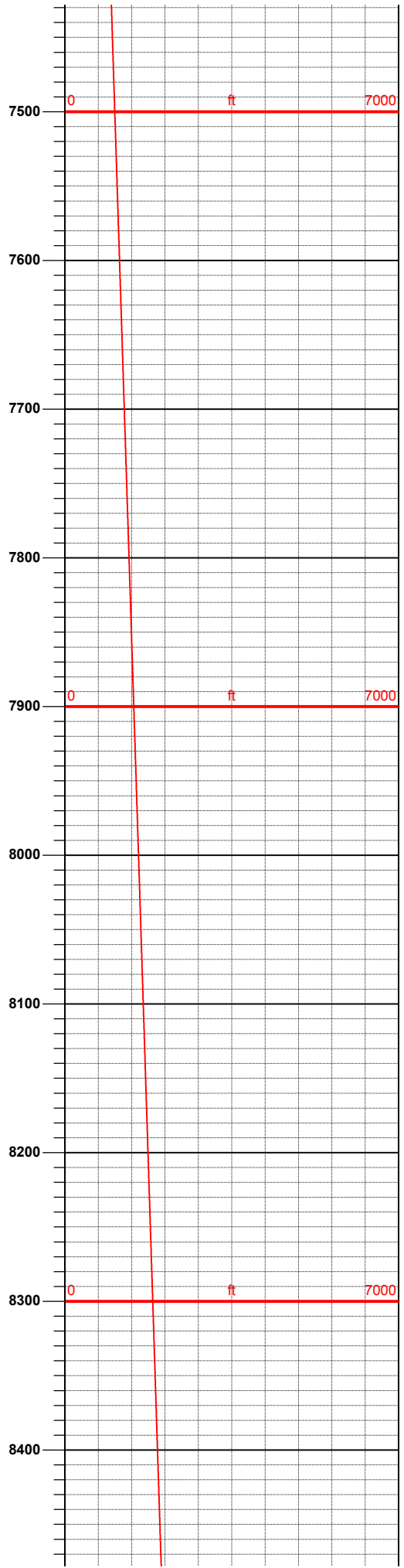
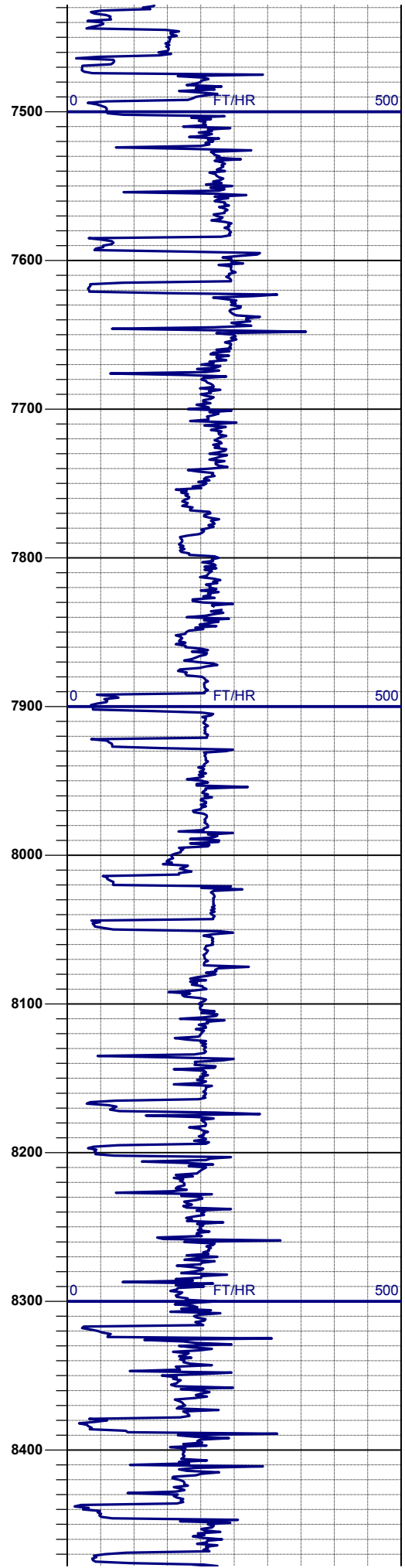
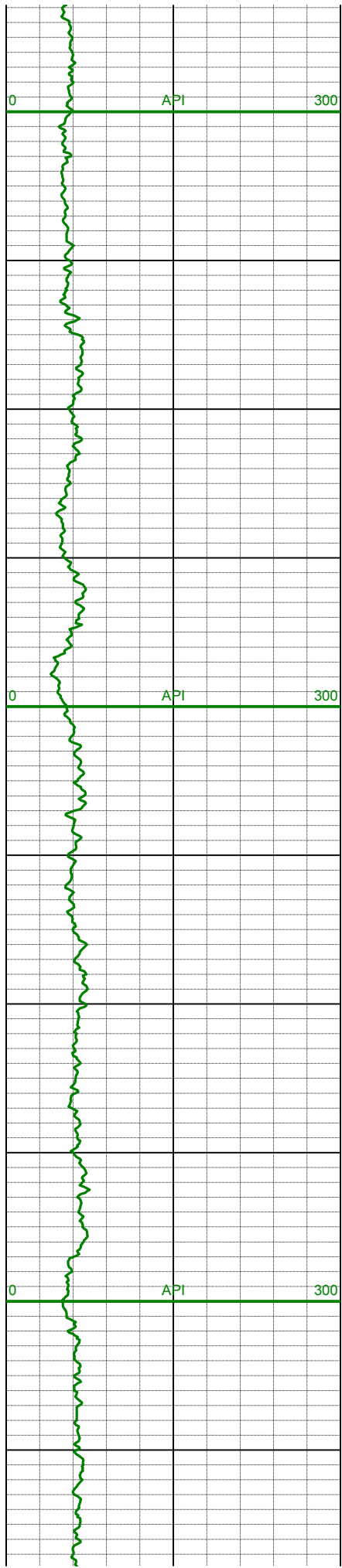


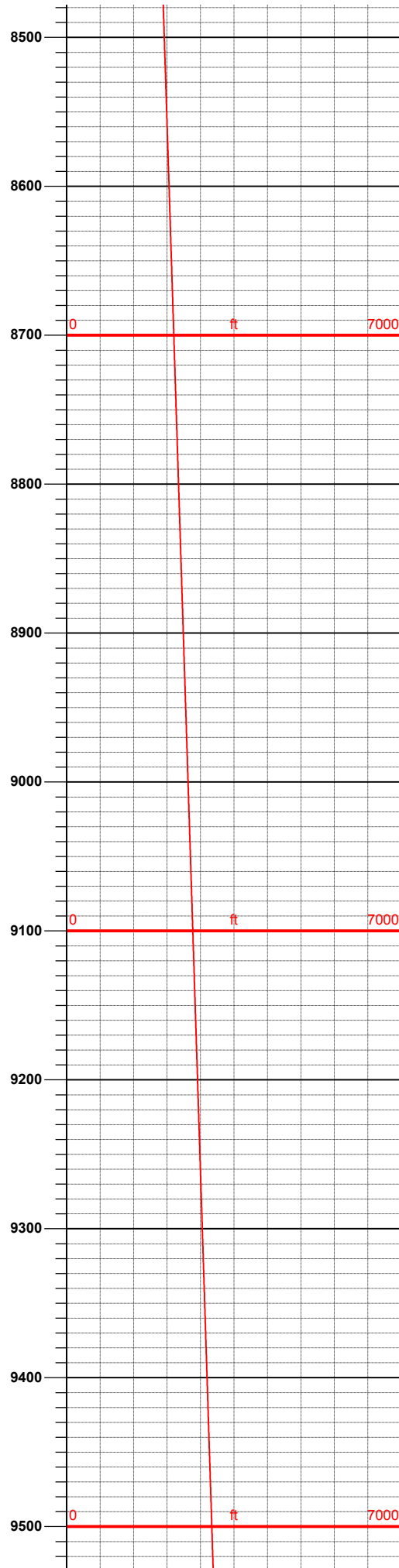
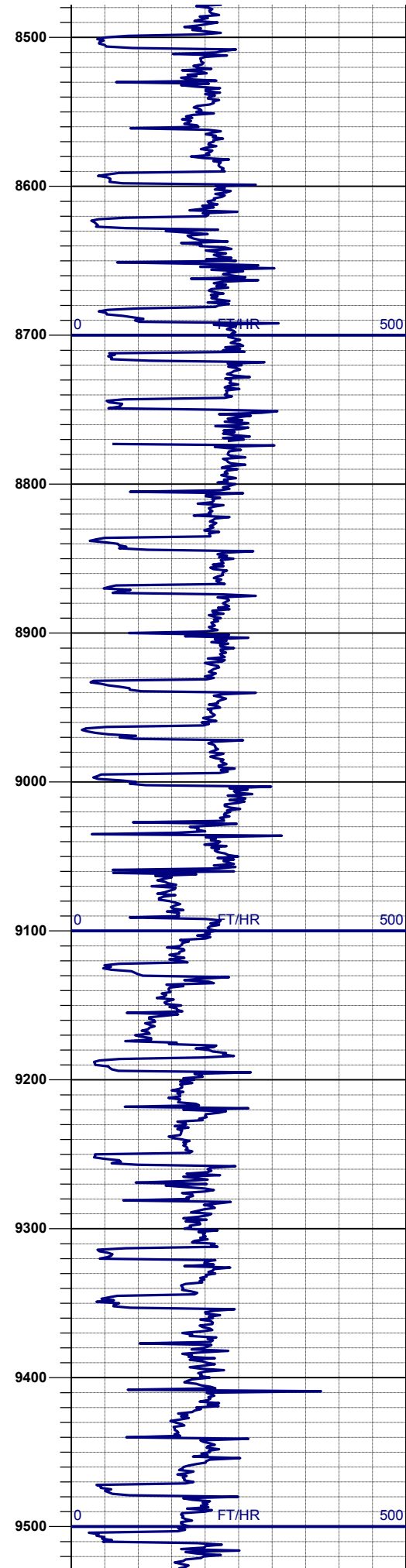
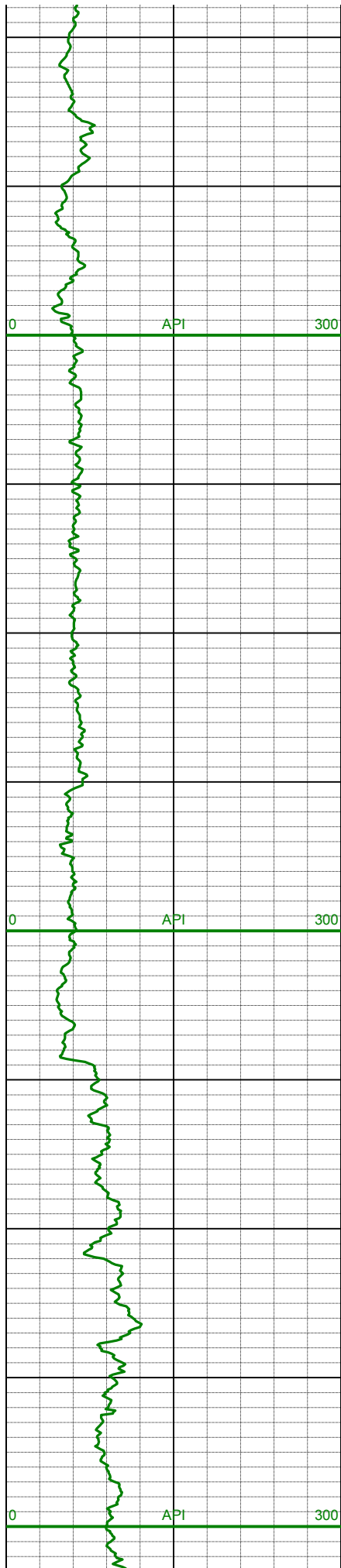
LOG created using L PLOT VH Version 3.0, February 08, 2014, Copyright (C) 1999-2009 Pason Systems Corp.

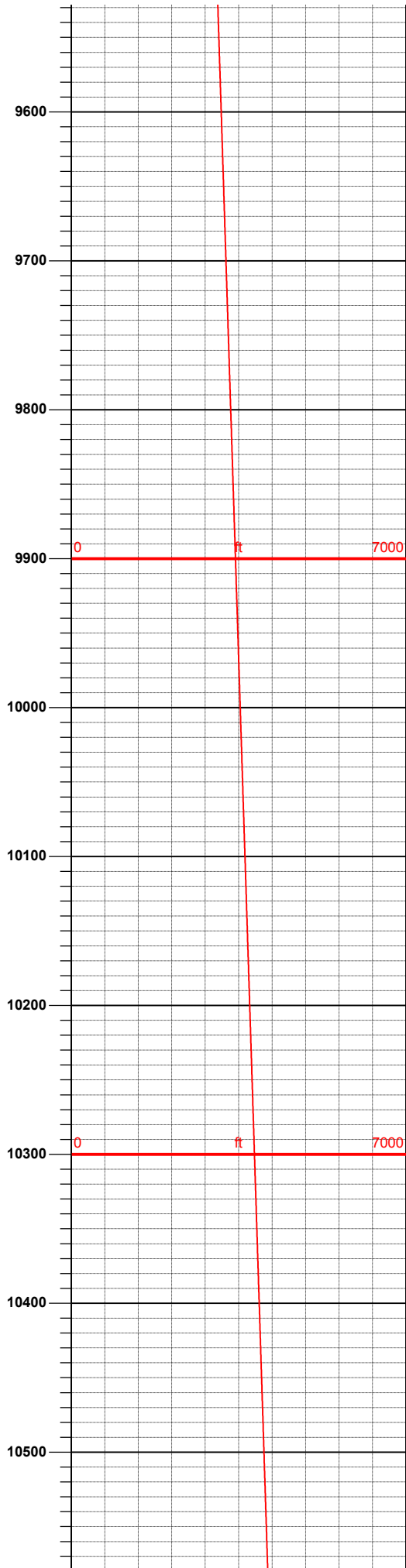
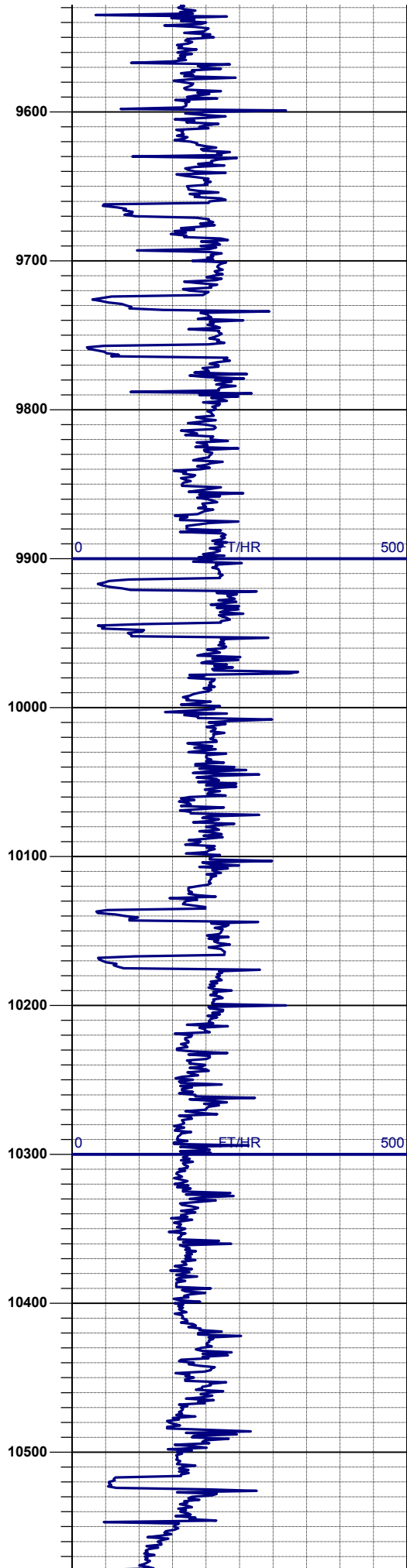
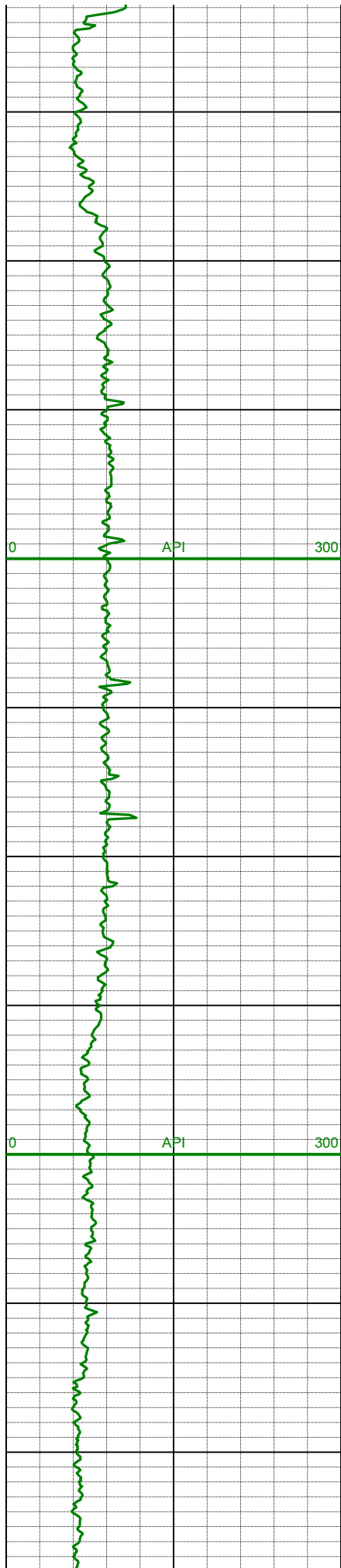
OPERATOR: PETROLEUM DEVELOPMENT CORPORATION
WELL: LOFLAND 22D-232
LOCATION: SWSE SEC. 22, T5N, R65W, 6TH
COUNTY: WELD
STATE: COLORADO
SPOT: SHL: 360' FSL x 1,287' FEL
ELEVATION: GL: 4,647'; KB: 4,662'
FIELD: WATTENBERG
SYSTEM: PASON
WELL TYPE: HORIZONTAL
DATES LOGGED: FEBRUARY 1, 2014 TO FEBRUARY 8, 2014
DEPTHS LOGGED: 5,938' TO 12,566'
LOGGERS: PASON COMMAND CENTER
DRILLING FLUID:
DRILLING RIG: ENSIGN 14
API: 05-123-37809-0000
LOG TYPE: MD
SCALE: 1:1200 (1 inch per 100 feet)
REMARKS:

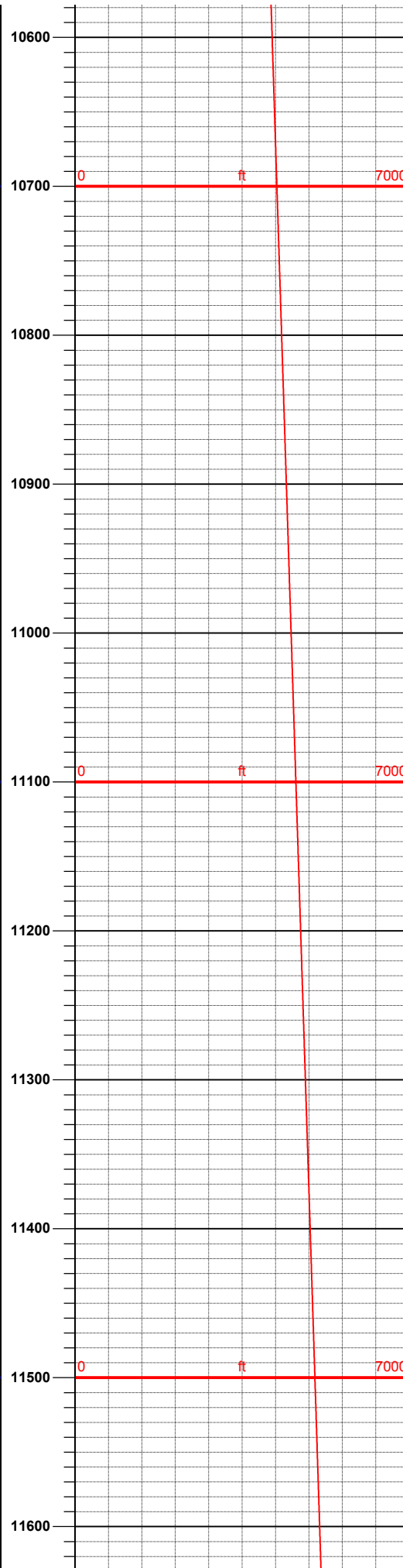
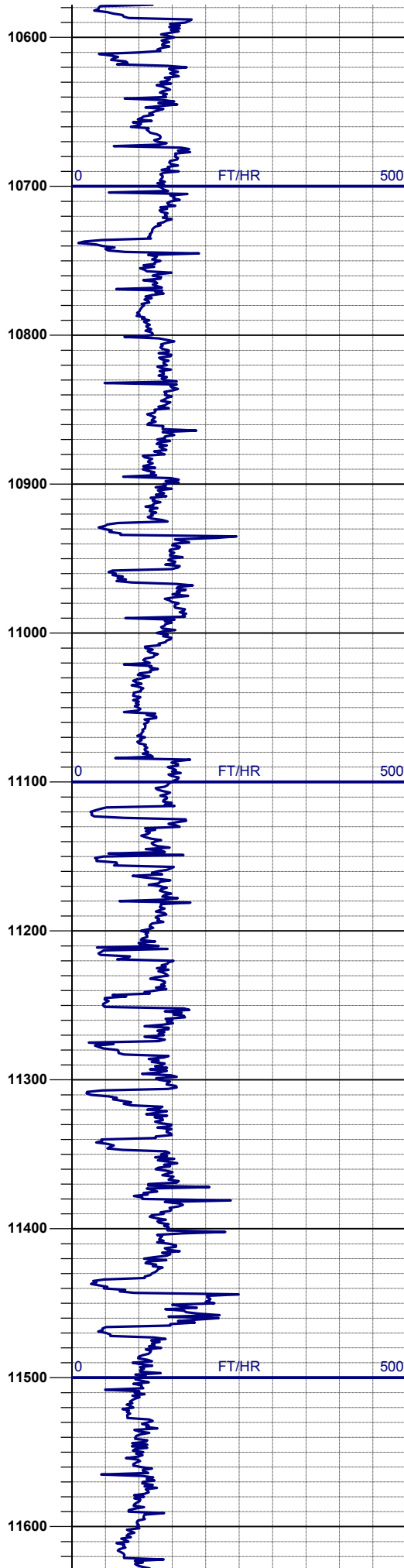
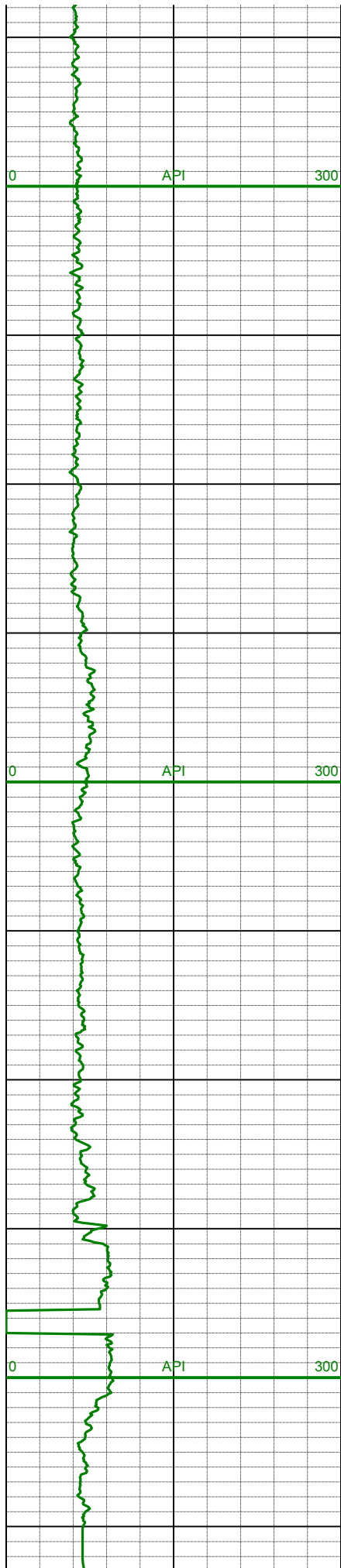


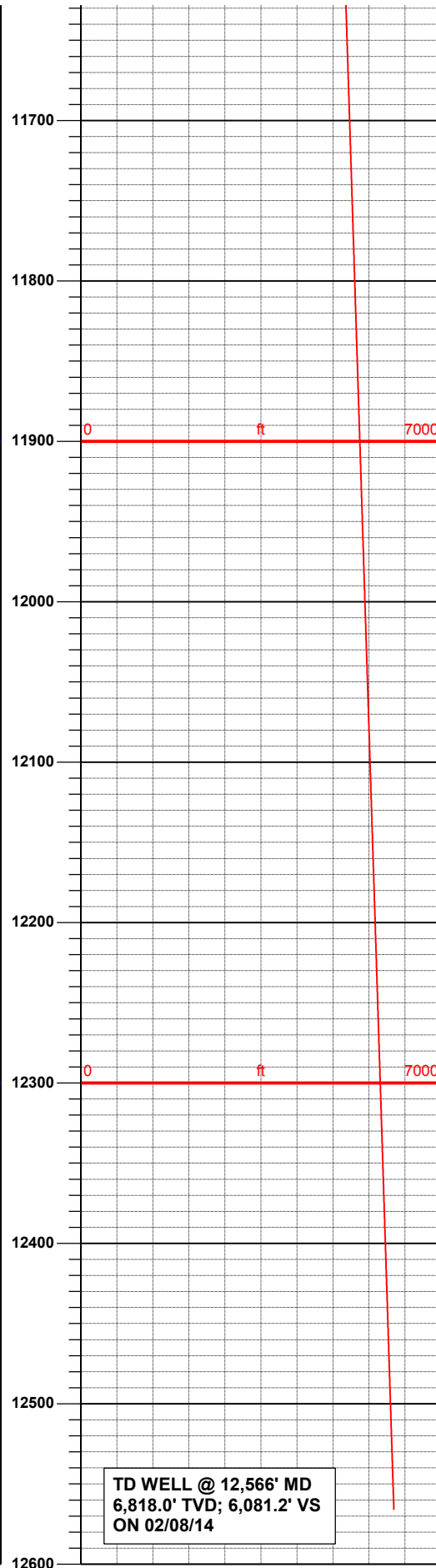
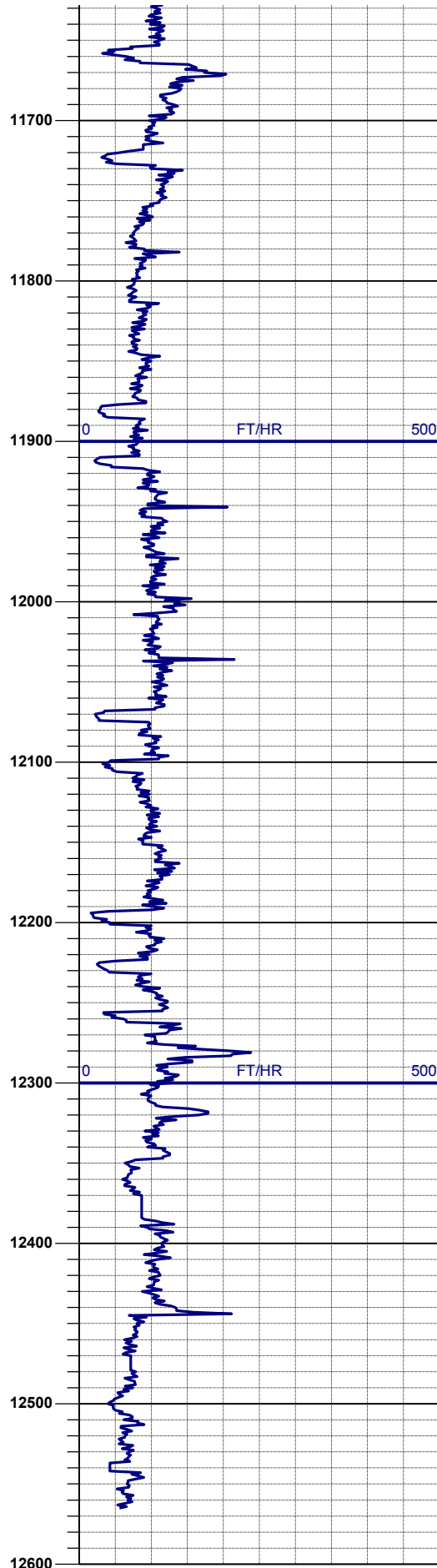
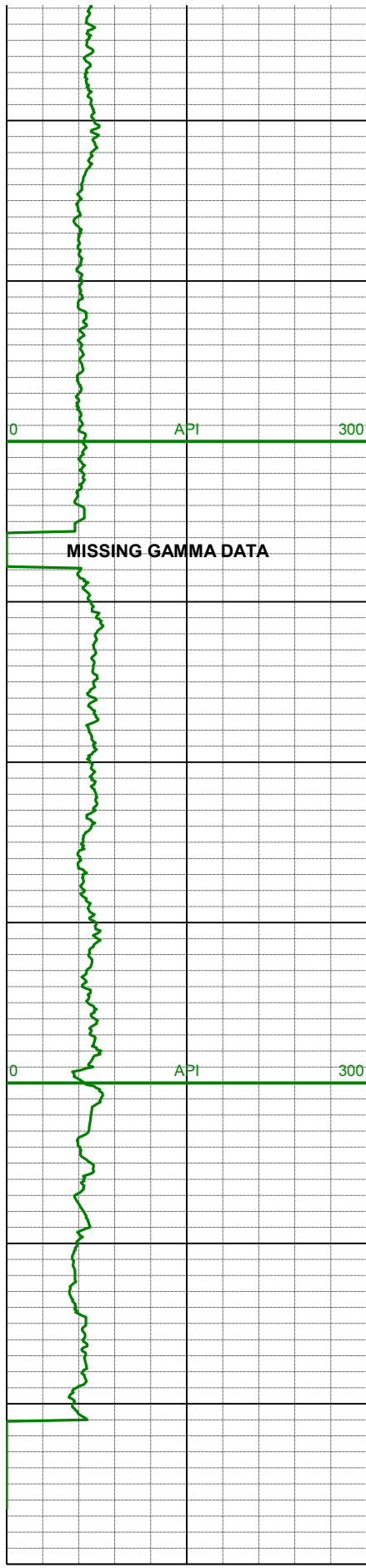












TD WELL @ 12,566' MD
6,818.0' TVD; 6,081.2' VS
ON 02/08/14