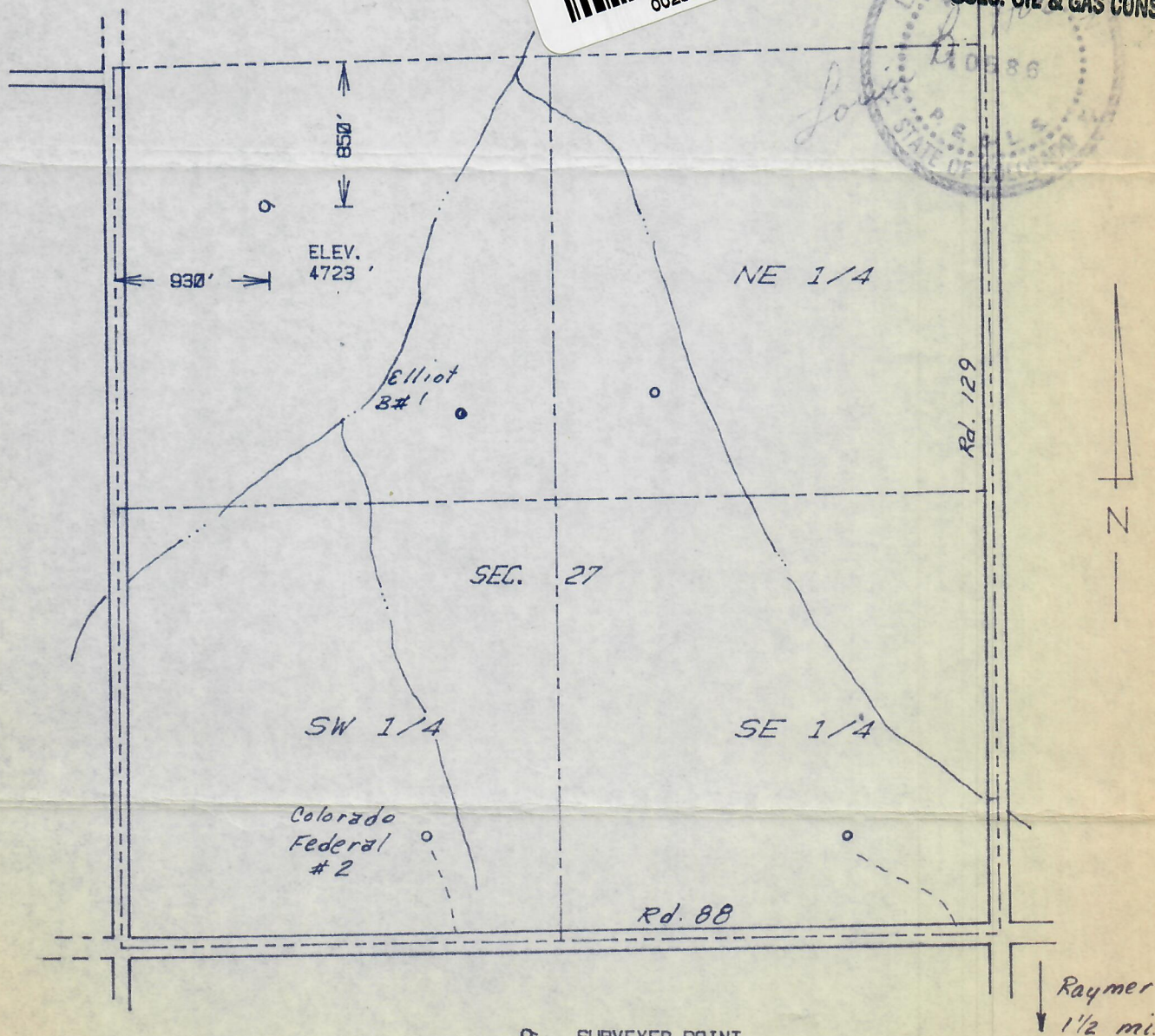


THE ACCOMPANYING PLAT IS AN ACCURATE REPRESENTATION SHOWING THE LOCATION OF A PROPOSED WELL. THIS LOCATION MAY BE DESCRIBED AS A POINT 850 FEET SOUTH OF THE NORTH LINE, AND 930 FEET EAST OF THE WEST LINE OF SECTION 27, TOWNSHIP 8 N RANGE 58 W OF THE 6th P.M., WELD COUNTY, COLORADO. THE SURFACE ELEVATION AT THIS POINT IS 4723 FEET m. s. l.

RECEIVED

APR 14 1986

COLO. OIL & GAS CONS. COMM.



SCALE - 1"=1000'

○ SURVEYED POINT
 ○ REFERENCE STAKE (0 'N, 0 'W)
 NW 1/4 SEC. 27, T 8 N, R 58 W

HARMON
ENGINEERING
SERVICES

MEYER F#1 (COMPLETED)

TXO PRODUCTION CORP

WELD CO., COLORADO 5 APRIL 1986