

PETROLEUM DEVELOPMENT CORP Weld County CO

Well Name: **Guttersen 6U-203**

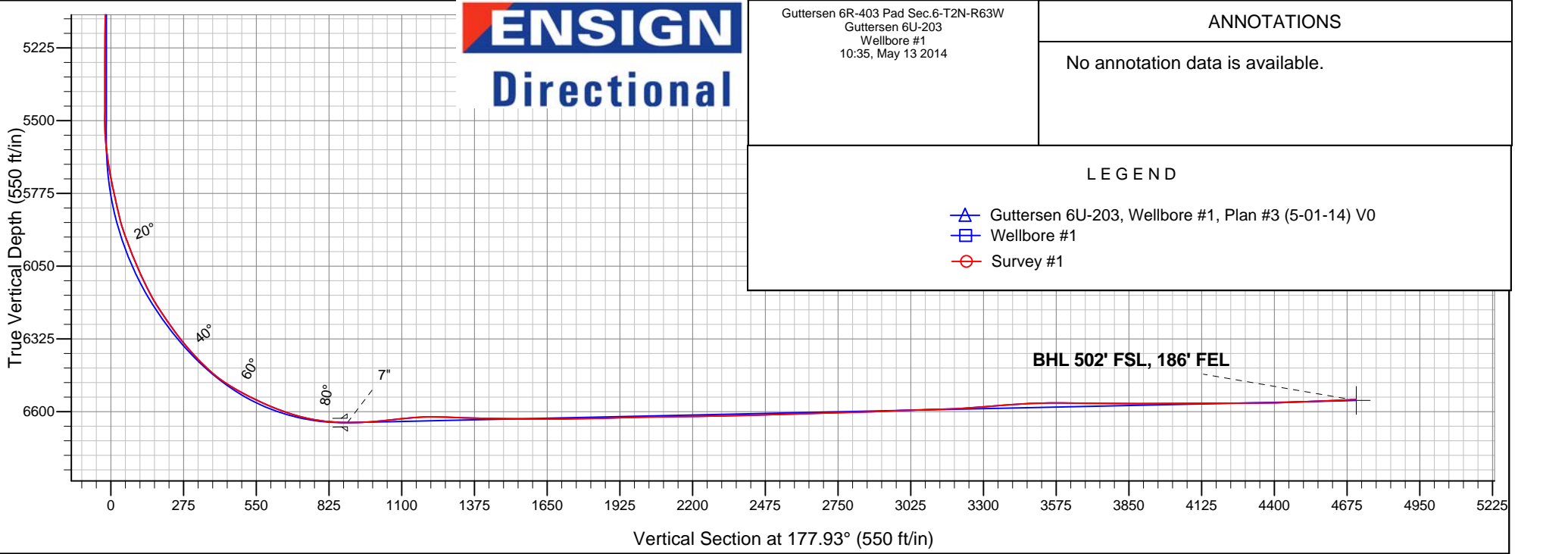
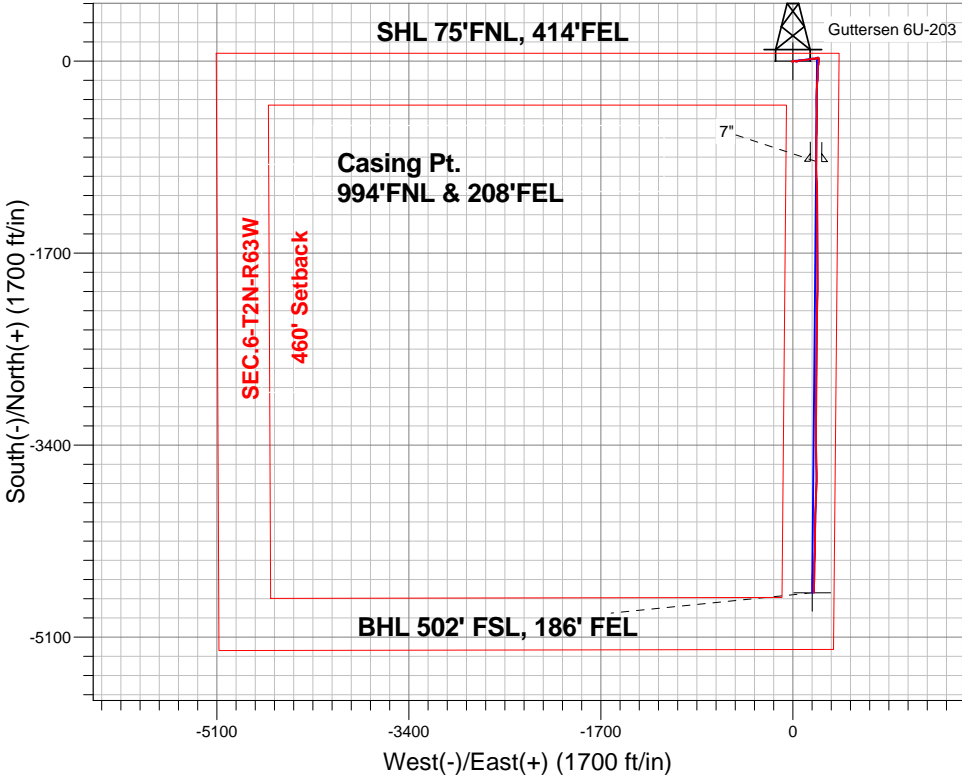
Surface Location: Guttersen 6R-403 Pad Sec.6-T2N-R63W  
North American Datum 1983 , US State Plane 1983 , Colorado Northern Zone

Ground Elevation: 4836.0

+N/-S	+E/-W	Northing	Easting	Latitude	Longitude	Slot
0.0	0.0	1308062.45	3287142.94	40.174460	-104.472400	
Ensign Rig #136 - RKB - 12.5' WELL @ 4848.5ft (Ensign Rig #136 - RKB - 12.5')						

FINAL SURVEY

Projected Bottom Hole Location  
10950'MD 6554'TVD 4705'S & 185'E of SHL  
92.9 degree Incl @ 181.1 degree AZM



Guttersen 6R-403 Pad Sec.6-T2N-R63W Guttersen 6U-203 Wellbore #1 10:35, May 13 2014	ANNOTATIONS
	No annotation data is available.
LEGEND	
▲ Guttersen 6U-203, Wellbore #1, Plan #3 (5-01-14) V0	
□ Wellbore #1	
○ Survey #1	



# **PETROLEUM DEVELOPMENT CORP Weld County CO**

**SEC.6-T2N-R63W**

**Guttersen 6R-403 Pad Sec.6-T2N-R63W**

**Guttersen 6U-203**

**Wellbore #1**

**Survey: Survey #1**

## **Standard Survey Report**

**13 May, 2014**

<b>Company:</b>	PETROLEUM DEVELOPMENT CORP Weld County CO	<b>Local Co-ordinate Reference:</b>	Well Gutteresen 6U-203
<b>Project:</b>	SEC.6-T2N-R63W	<b>TVD Reference:</b>	WELL @ 4848.5ft (Ensign Rig #136 - RKB - 12.5')
<b>Site:</b>	Gutteresen 6R-403 Pad Sec.6-T2N-R63W	<b>MD Reference:</b>	WELL @ 4848.5ft (Ensign Rig #136 - RKB - 12.5')
<b>Well:</b>	Gutteresen 6U-203	<b>North Reference:</b>	True
<b>Wellbore:</b>	Wellbore #1	<b>Survey Calculation Method:</b>	Minimum Curvature
<b>Design:</b>	Wellbore #1	<b>Database:</b>	Landmark

<b>Project</b>	SEC.6-T2N-R63W, Weld County, Colorado		
<b>Map System:</b>	US State Plane 1983	<b>System Datum:</b>	Mean Sea Level
<b>Geo Datum:</b>	North American Datum 1983		Using Well Reference Point
<b>Map Zone:</b>	Colorado Northern Zone		Using geodetic scale factor

Site		Guttersen 6R-403 Pad Sec.6-T2N-R63W			
Site Position:		Northing:	1,308,061.43ft	Latitude:	40.174460
From:	Lat/Long	Easting:	3,287,053.52ft	Longitude:	-104.472720
Position Uncertainty:	0.0 ft	Slot Radius:	"	Grid Convergence:	0.66 °

Well	Guttersen 6U-203					
Well Position	+N-S	0.0 ft	Northing:	1,308,062.45 ft	Latitude:	40.174460
	+E-W	0.0 ft	Easting:	3,287,142.94 ft	Longitude:	-104.472400
Position Uncertainty		0.0 ft	Wellhead Elevation:	ft	Ground Level:	4,836.0 ft

<b>Wellbore</b>	Wellbore #1				
Magnetics	Model Name	Sample Date	Declination (°)	Dip Angle (°)	Field Strength (nT)
	IGRF2010	4/7/2014	8.31	66.82	52,747
	IGRF2010	5/1/2014	8.30	66.82	52,740

Design	Wellbore #1				
Audit Notes:					
Version:	1.0	Phase:	ACTUAL	Tie On Depth:	0.0
Vertical Section:	Depth From (TVD)	+N/-S	+E/-W	Direction	
	(ft)	(ft)	(ft)	(°)	
	0.0	0.0	0.0	177.93	

<b>Survey Program</b>	Date 5/13/2014			
From (ft)	To (ft)	Survey (Wellbore)	Tool Name	Description
44.0	10,950.0	Survey #1 (Wellbore #1)	MWD	MWD - Standard

<b>Survey</b>										
Measured Depth (ft)	Inclination (°)	Azimuth (°)	Vertical Depth (ft)	+N/-S (ft)	+E/-W (ft)	Vertical Section (ft)	Dogleg Rate (°/100ft)	Build Rate (°/100ft)	Turn Rate (°/100ft)	
0.0	0.00	0.00	0.0	0.0	0.0	0.0	0.00	0.00	0.00	
1.0	0.02	207.50	1.0	0.0	0.0	0.0	1.59	1.59	0.00	
SHL 75'FNL, 414'FEL										
44.0	0.70	207.50	44.0	-0.2	-0.1	0.2	1.59	1.59	0.00	
133.0	0.70	220.50	133.0	-1.1	-0.7	1.1	0.18	0.00	14.61	
227.0	1.00	220.50	227.0	-2.2	-1.6	2.1	0.32	0.32	0.00	
317.0	0.80	236.10	317.0	-3.1	-2.7	3.0	0.35	-0.22	17.33	
408.0	0.90	239.30	408.0	-3.9	-3.8	3.7	0.12	0.11	3.52	
499.0	0.60	230.50	499.0	-4.5	-4.8	4.4	0.35	-0.33	-9.67	

<b>Company:</b>	PETROLEUM DEVELOPMENT CORP Weld County CO	<b>Local Co-ordinate Reference:</b>	Well Gutteresen 6U-203
<b>Project:</b>	SEC.6-T2N-R63W	<b>TVD Reference:</b>	WELL @ 4848.5ft (Ensign Rig #136 - RKB - 12.5')
<b>Site:</b>	Gutteresen 6R-403 Pad Sec.6-T2N-R63W	<b>MD Reference:</b>	WELL @ 4848.5ft (Ensign Rig #136 - RKB - 12.5')
<b>Well:</b>	Gutteresen 6U-203	<b>North Reference:</b>	True
<b>Wellbore:</b>	Wellbore #1	<b>Survey Calculation Method:</b>	Minimum Curvature
<b>Design:</b>	Wellbore #1	<b>Database:</b>	Landmark

Survey										
Measured Depth (ft)	Inclination (°)	Azimuth (°)	Vertical Depth (ft)	+N/-S (ft)	+E/-W (ft)	Vertical Section (ft)	Dogleg Rate (°/100ft)	Build Rate (°/100ft)	Turn Rate (°/100ft)	
589.0	0.40	227.30	588.9	-5.0	-5.4	4.8	0.22	-0.22	-3.56	
680.0	0.80	16.60	679.9	-4.6	-5.4	4.4	1.28	0.44	164.07	
771.0	1.00	25.50	770.9	-3.3	-4.9	3.1	0.27	0.22	9.78	
878.0	0.80	10.20	877.9	-1.7	-4.4	1.6	0.29	-0.19	-14.30	
963.0	0.90	36.60	962.9	-0.6	-3.9	0.5	0.47	0.12	31.06	
1,058.0	3.00	61.00	1,057.9	1.2	-1.3	-1.2	2.33	2.21	25.68	
1,149.0	4.90	78.60	1,148.6	3.1	4.6	-2.9	2.45	2.09	19.34	
1,240.0	4.70	107.40	1,239.3	2.8	12.0	-2.3	2.63	-0.22	31.65	
1,331.0	4.40	106.40	1,330.0	0.7	18.9	0.0	0.34	-0.33	-1.10	
1,422.0	4.30	107.80	1,420.8	-1.4	25.5	2.3	0.16	-0.11	1.54	
1,512.0	5.40	89.90	1,510.5	-2.4	33.0	3.6	2.06	1.22	-19.89	
1,603.0	5.40	56.50	1,601.1	0.0	40.8	1.5	3.41	0.00	-36.70	
1,694.0	3.40	66.10	1,691.8	3.4	46.9	-1.7	2.33	-2.20	10.55	
1,785.0	4.70	88.30	1,782.6	4.6	53.0	-2.7	2.21	1.43	24.40	
1,875.0	4.80	86.90	1,872.3	4.9	60.5	-2.8	0.17	0.11	-1.56	
1,966.0	4.20	81.20	1,963.0	5.7	67.6	-3.2	0.82	-0.66	-6.26	
2,057.0	4.20	76.90	2,053.8	6.9	74.1	-4.2	0.35	0.00	-4.73	
2,148.0	3.60	75.60	2,144.5	8.4	80.1	-5.5	0.67	-0.66	-1.43	
2,242.0	4.70	92.70	2,238.3	8.9	86.8	-5.8	1.75	1.17	18.19	
2,337.0	4.50	85.30	2,333.0	9.1	94.4	-5.6	0.66	-0.21	-7.79	
2,432.0	4.30	72.60	2,427.7	10.4	101.6	-6.8	1.04	-0.21	-13.37	
2,527.0	4.20	91.40	2,522.5	11.4	108.4	-7.5	1.46	-0.11	19.79	
2,622.0	3.40	79.00	2,617.2	11.9	114.7	-7.7	1.20	-0.84	-13.05	
2,718.0	4.90	82.80	2,713.0	12.9	121.5	-8.5	1.59	1.56	3.96	
2,813.0	4.80	83.50	2,807.7	13.9	129.5	-9.2	0.12	-0.11	0.74	
2,908.0	4.70	77.90	2,902.3	15.2	137.3	-10.2	0.50	-0.11	-5.89	
3,003.0	4.70	77.70	2,997.0	16.8	144.9	-11.5	0.02	0.00	-0.21	
3,098.0	4.50	73.50	3,091.7	18.7	152.3	-13.2	0.41	-0.21	-4.42	
3,193.0	5.90	79.80	3,186.3	20.6	160.6	-14.8	1.59	1.47	6.63	
3,288.0	5.30	74.70	3,280.9	22.6	169.7	-16.5	0.82	-0.63	-5.37	
3,384.0	4.90	98.10	3,376.5	23.2	178.0	-16.8	2.19	-0.42	24.38	
3,479.0	4.40	90.40	3,471.2	22.6	185.7	-15.9	0.84	-0.53	-8.11	
3,574.0	3.80	89.30	3,565.9	22.6	192.5	-15.7	0.64	-0.63	-1.16	
3,669.0	3.90	86.30	3,660.7	22.9	198.8	-15.7	0.24	0.11	-3.16	
3,764.0	2.70	74.60	3,755.6	23.7	204.2	-16.3	1.44	-1.26	-12.32	
3,860.0	1.60	31.70	3,851.5	25.4	207.1	-17.9	1.95	-1.15	-44.69	
3,955.0	1.10	243.80	3,946.5	26.2	207.0	-18.6	2.74	-0.53	-155.68	
4,050.0	1.20	249.30	4,041.5	25.4	205.2	-18.0	0.16	0.11	5.79	
4,145.0	1.40	253.30	4,136.4	24.7	203.2	-17.3	0.23	0.21	4.21	
4,241.0	0.70	48.00	4,232.4	24.8	202.5	-17.4	2.14	-0.73	161.15	
4,336.0	0.60	61.00	4,327.4	25.4	203.4	-18.0	0.19	-0.11	13.68	
4,431.0	0.50	56.80	4,422.4	25.9	204.1	-18.5	0.11	-0.11	-4.42	
4,526.0	0.40	80.90	4,517.4	26.1	204.8	-18.7	0.22	-0.11	25.37	
4,621.0	0.40	38.50	4,612.4	26.5	205.4	-19.0	0.30	0.00	-44.63	
4,716.0	0.40	43.30	4,707.4	27.0	205.8	-19.5	0.04	0.00	5.05	
4,812.0	0.60	37.70	4,803.4	27.6	206.3	-20.1	0.21	0.21	-5.83	
4,907.0	0.50	55.20	4,898.4	28.2	207.0	-20.7	0.20	-0.11	18.42	
5,002.0	0.70	61.20	4,993.4	28.8	207.8	-21.2	0.22	0.21	6.32	
5,097.0	1.90	80.40	5,088.4	29.3	209.9	-21.7	1.33	1.26	20.21	
5,192.0	1.60	80.50	5,183.3	29.8	212.7	-22.1	0.32	-0.32	0.11	
5,288.0	1.80	70.50	5,279.3	30.5	215.5	-22.7	0.37	0.21	-10.42	
5,383.0	2.10	97.10	5,374.2	30.8	218.6	-22.8	0.99	0.32	28.00	

<b>Company:</b>	PETROLEUM DEVELOPMENT CORP Weld County CO	<b>Local Co-ordinate Reference:</b>	Well Gutteresen 6U-203
<b>Project:</b>	SEC.6-T2N-R63W	<b>TVD Reference:</b>	WELL @ 4848.5ft (Ensign Rig #136 - RKB - 12.5')
<b>Site:</b>	Gutteresen 6R-403 Pad Sec.6-T2N-R63W	<b>MD Reference:</b>	WELL @ 4848.5ft (Ensign Rig #136 - RKB - 12.5')
<b>Well:</b>	Gutteresen 6U-203	<b>North Reference:</b>	True
<b>Wellbore:</b>	Wellbore #1	<b>Survey Calculation Method:</b>	Minimum Curvature
<b>Design:</b>	Wellbore #1	<b>Database:</b>	Landmark

Survey									
Measured Depth (ft)	Inclination (°)	Azimuth (°)	Vertical Depth (ft)	+N/-S (ft)	+E/-W (ft)	Vertical Section (ft)	Dogleg Rate (°/100ft)	Build Rate (°/100ft)	Turn Rate (°/100ft)
5,478.0	2.00	86.90	5,469.2	30.7	222.0	-22.6	0.40	-0.11	-10.74
5,510.0	2.00	84.10	5,501.2	30.7	223.1	-22.6	0.31	0.00	-8.75
5,542.0	2.60	111.50	5,533.1	30.5	224.3	-22.4	3.86	1.88	85.63
5,573.0	4.00	147.50	5,564.1	29.4	225.6	-21.2	7.85	4.52	116.13
5,605.0	6.00	165.80	5,596.0	26.8	226.6	-18.6	7.92	6.25	57.19
5,637.0	7.70	168.80	5,627.7	23.1	227.4	-14.8	5.43	5.31	9.38
5,668.0	9.20	174.20	5,658.4	18.6	228.1	-10.3	5.47	4.84	17.42
5,700.0	10.00	180.00	5,689.9	13.3	228.3	-5.0	3.92	2.50	18.13
5,732.0	10.70	183.20	5,721.4	7.5	228.2	0.8	2.83	2.19	10.00
5,764.0	11.70	184.60	5,752.8	1.3	227.7	6.9	3.24	3.13	4.38
5,795.0	12.40	185.50	5,783.1	-5.1	227.2	13.4	2.34	2.26	2.90
5,827.0	12.80	186.20	5,814.4	-12.1	226.5	20.3	1.34	1.25	2.19
5,859.0	13.30	185.80	5,845.5	-19.3	225.7	27.4	1.59	1.56	-1.25
5,891.0	14.60	186.70	5,876.6	-26.9	224.9	35.1	4.12	4.06	2.81
5,922.0	17.20	187.40	5,906.4	-35.4	223.8	43.4	8.41	8.39	2.26
5,954.0	20.10	187.10	5,936.7	-45.5	222.5	53.5	9.07	9.06	-0.94
5,986.0	21.40	183.90	5,966.6	-56.8	221.4	64.8	5.39	4.06	-10.00
6,017.0	21.90	182.10	5,995.5	-68.2	220.8	76.2	2.68	1.61	-5.81
6,049.0	23.00	180.90	6,025.0	-80.4	220.5	88.4	3.72	3.44	-3.75
6,081.0	23.40	180.60	6,054.4	-93.0	220.4	101.0	1.30	1.25	-0.94
6,113.0	24.50	180.60	6,083.7	-106.0	220.2	113.9	3.44	3.44	0.00
6,144.0	24.60	180.00	6,111.9	-118.9	220.2	126.8	0.87	0.32	-1.94
6,176.0	26.80	182.50	6,140.7	-132.8	219.8	140.6	7.66	6.88	7.81
6,208.0	29.70	184.10	6,168.9	-147.9	219.0	155.7	9.37	9.06	5.00
6,240.0	32.80	185.80	6,196.3	-164.4	217.5	172.2	10.07	9.69	5.31
6,271.0	34.20	187.10	6,222.1	-181.4	215.6	189.1	5.07	4.52	4.19
6,303.0	34.60	186.00	6,248.5	-199.4	213.5	207.0	2.31	1.25	-3.44
6,335.0	35.10	182.90	6,274.8	-217.6	212.1	225.2	5.75	1.56	-9.69
6,367.0	36.50	180.60	6,300.7	-236.3	211.6	243.8	6.07	4.38	-7.19
6,398.0	38.10	181.30	6,325.4	-255.1	211.2	262.6	5.34	5.16	2.26
6,430.0	39.80	182.70	6,350.3	-275.2	210.5	282.6	5.98	5.31	4.38
6,462.0	42.10	182.50	6,374.4	-296.2	209.6	303.5	7.20	7.19	-0.63
6,494.0	44.00	181.30	6,397.8	-318.0	208.9	325.3	6.47	5.94	-3.75
6,525.0	45.20	179.90	6,419.9	-339.8	208.6	347.1	5.00	3.87	-4.52
6,557.0	47.10	179.20	6,442.1	-362.8	208.8	370.1	6.14	5.94	-2.19
6,589.0	50.50	177.80	6,463.1	-386.9	209.5	394.2	11.12	10.63	-4.38
6,621.0	54.80	178.60	6,482.6	-412.3	210.3	419.7	13.58	13.44	2.50
6,652.0	58.60	179.90	6,499.6	-438.2	210.6	445.5	12.75	12.26	4.19
6,684.0	60.60	180.70	6,515.8	-465.8	210.4	473.1	6.61	6.25	2.50
6,716.0	61.90	181.10	6,531.2	-493.9	210.0	501.1	4.21	4.06	1.25
6,747.0	63.00	181.10	6,545.5	-521.3	209.5	528.6	3.55	3.55	0.00
6,779.0	64.50	181.30	6,559.6	-550.0	208.9	557.2	4.72	4.69	0.63
6,811.0	66.40	180.90	6,572.9	-579.1	208.3	586.3	6.05	5.94	-1.25
6,842.0	68.40	180.70	6,584.9	-607.7	207.9	614.9	6.48	6.45	-0.65
6,874.0	70.00	180.40	6,596.2	-637.7	207.6	644.8	5.08	5.00	-0.94
6,906.0	71.90	180.40	6,606.7	-667.9	207.4	675.0	5.94	5.94	0.00
6,938.0	74.20	180.00	6,616.0	-698.5	207.3	705.6	7.29	7.19	-1.25
6,970.0	76.90	179.70	6,624.0	-729.5	207.4	736.5	8.49	8.44	-0.94
7,001.0	79.80	180.00	6,630.2	-759.9	207.5	766.9	9.40	9.35	0.97
7,033.0	82.50	180.40	6,635.2	-791.5	207.4	798.5	8.53	8.44	1.25
7,065.0	85.10	180.90	6,638.6	-823.3	207.0	830.2	8.27	8.13	1.56

<b>Company:</b>	PETROLEUM DEVELOPMENT CORP Weld County CO	<b>Local Co-ordinate Reference:</b>	Well Gutteresen 6U-203
<b>Project:</b>	SEC.6-T2N-R63W	<b>TVD Reference:</b>	WELL @ 4848.5ft (Ensign Rig #136 - RKB - 12.5')
<b>Site:</b>	Gutteresen 6R-403 Pad Sec.6-T2N-R63W	<b>MD Reference:</b>	WELL @ 4848.5ft (Ensign Rig #136 - RKB - 12.5')
<b>Well:</b>	Gutteresen 6U-203	<b>North Reference:</b>	True
<b>Wellbore:</b>	Wellbore #1	<b>Survey Calculation Method:</b>	Minimum Curvature
<b>Design:</b>	Wellbore #1	<b>Database:</b>	Landmark

Survey									
Measured Depth (ft)	Inclination (°)	Azimuth (°)	Vertical Depth (ft)	+N/-S (ft)	+E/-W (ft)	Vertical Section (ft)	Dogleg Rate (°/100ft)	Build Rate (°/100ft)	Turn Rate (°/100ft)
7,097.0	88.00	180.90	6,640.5	-855.2	206.5	862.1	9.06	9.06	0.00
7,161.0	91.20	180.60	6,641.0	-919.2	205.7	926.0	5.02	5.00	-0.47
7,191.0	92.20	179.90	6,640.1	-949.2	205.5	956.0	4.07	3.33	-2.33
7,222.0	95.50	177.40	6,638.0	-980.1	206.3	986.9	13.34	10.65	-8.06
7,252.0	93.80	178.30	6,635.6	-1,010.0	207.4	1,016.8	6.41	-5.67	3.00
7,282.0	95.50	177.40	6,633.1	-1,039.9	208.5	1,046.7	6.41	5.67	-3.00
7,312.0	96.70	176.50	6,630.0	-1,069.6	210.1	1,076.5	4.99	4.00	-3.00
7,342.0	96.40	176.30	6,626.5	-1,099.4	212.0	1,106.3	1.20	-1.00	-0.67
7,373.0	95.80	177.80	6,623.2	-1,130.2	213.5	1,137.2	5.19	-1.94	4.84
7,403.0	93.20	179.20	6,620.9	-1,160.1	214.3	1,167.1	9.84	-8.67	4.67
7,434.0	90.40	179.50	6,619.9	-1,191.0	214.7	1,198.0	9.08	-9.03	0.97
7,525.0	87.20	179.70	6,621.8	-1,282.0	215.3	1,289.0	3.52	-3.52	0.22
7,615.0	88.80	179.90	6,625.0	-1,372.0	215.6	1,378.9	1.79	1.78	0.22
7,706.0	89.10	179.70	6,626.6	-1,462.9	215.9	1,469.8	0.40	0.33	-0.22
7,797.0	89.80	180.40	6,627.5	-1,553.9	215.9	1,560.7	1.09	0.77	0.77
7,888.0	90.20	179.50	6,627.5	-1,644.9	215.9	1,651.7	1.08	0.44	-0.99
7,982.0	90.30	180.20	6,627.1	-1,738.9	216.2	1,745.6	0.75	0.11	0.74
8,077.0	91.50	179.20	6,625.6	-1,833.9	216.7	1,840.6	1.64	1.26	-1.05
8,172.0	91.90	180.00	6,622.8	-1,928.9	217.3	1,935.5	0.94	0.42	0.84
8,267.0	90.90	180.70	6,620.5	-2,023.8	216.8	2,030.4	1.28	-1.05	0.74
8,362.0	90.80	180.90	6,619.1	-2,118.8	215.4	2,125.2	0.24	-0.11	0.21
8,458.0	91.00	181.60	6,617.5	-2,214.8	213.3	2,221.1	0.76	0.21	0.73
8,553.0	91.10	180.60	6,615.8	-2,309.7	211.5	2,315.9	1.06	0.11	-1.05
8,648.0	91.00	180.60	6,614.1	-2,404.7	210.5	2,410.8	0.11	-0.11	0.00
8,743.0	92.20	180.40	6,611.4	-2,499.7	209.7	2,505.6	1.28	1.26	-0.21
8,838.0	91.60	181.10	6,608.3	-2,594.6	208.5	2,600.5	0.97	-0.63	0.74
8,933.0	91.90	179.90	6,605.4	-2,689.6	207.6	2,695.3	1.30	0.32	-1.26
9,028.0	91.50	180.60	6,602.5	-2,784.5	207.2	2,790.2	0.85	-0.42	0.74
9,124.0	91.70	180.90	6,599.9	-2,880.5	206.0	2,886.1	0.38	0.21	0.31
9,219.0	92.60	179.90	6,596.3	-2,975.4	205.3	2,980.9	1.42	0.95	-1.05
9,314.0	91.50	179.90	6,592.9	-3,070.3	205.5	3,075.8	1.16	-1.16	0.00
9,409.0	92.00	181.10	6,590.0	-3,165.3	204.6	3,170.6	1.37	0.53	1.26
9,504.0	94.30	180.20	6,584.8	-3,260.1	203.6	3,265.4	2.60	2.42	-0.95
9,600.0	94.70	179.50	6,577.2	-3,355.8	203.8	3,361.0	0.84	0.42	-0.73
9,695.0	93.30	179.20	6,570.6	-3,450.6	204.9	3,455.8	1.51	-1.47	-0.32
9,790.0	90.60	179.00	6,567.4	-3,545.5	206.4	3,550.7	2.85	-2.84	-0.21
9,885.0	89.10	179.30	6,567.6	-3,640.5	207.8	3,645.7	1.61	-1.58	0.32
9,980.0	89.30	180.90	6,569.0	-3,735.5	207.6	3,740.6	1.70	0.21	1.68
10,075.0	89.90	182.00	6,569.6	-3,830.5	205.2	3,835.4	1.32	0.63	1.16
10,171.0	90.10	181.60	6,569.6	-3,926.4	202.2	3,931.2	0.47	0.21	-0.42
10,266.0	90.00	182.30	6,569.5	-4,021.4	199.0	4,025.9	0.74	-0.11	0.74
10,361.0	90.70	180.40	6,569.0	-4,116.3	196.7	4,120.8	2.13	0.74	-2.00
10,456.0	90.40	180.70	6,568.1	-4,211.3	195.8	4,215.7	0.45	-0.32	0.32
10,552.0	90.10	181.10	6,567.6	-4,307.3	194.3	4,311.5	0.52	-0.31	0.42
10,647.0	91.40	182.00	6,566.4	-4,402.3	191.7	4,406.3	1.66	1.37	0.95
10,742.0	92.20	180.90	6,563.4	-4,497.2	189.3	4,501.1	1.43	0.84	-1.16
10,837.0	92.30	181.60	6,559.7	-4,592.1	187.3	4,595.9	0.74	0.11	0.74
10,893.0	92.90	181.10	6,557.1	-4,648.0	185.9	4,651.7	1.39	1.07	-0.89
10,950.0	92.90	181.10	6,554.2	-4,704.9	184.9	4,708.5	0.00	0.00	0.00
BHL 500' FSL, 200' FEL									

<b>Company:</b>	PETROLEUM DEVELOPMENT CORP Weld County CO	<b>Local Co-ordinate Reference:</b>	Well Guttersen 6U-203
<b>Project:</b>	SEC.6-T2N-R63W	<b>TVD Reference:</b>	WELL @ 4848.5ft (Ensign Rig #136 - RKB - 12.5')
<b>Site:</b>	Guttersen 6R-403 Pad Sec.6-T2N-R63W	<b>MD Reference:</b>	WELL @ 4848.5ft (Ensign Rig #136 - RKB - 12.5')
<b>Well:</b>	Guttersen 6U-203	<b>North Reference:</b>	True
<b>Wellbore:</b>	Wellbore #1	<b>Survey Calculation Method:</b>	Minimum Curvature
<b>Design:</b>	Wellbore #1	<b>Database:</b>	Landmark

Checked By: _____	Approved By: _____	Date: _____
-------------------	--------------------	-------------