



6899 Pecos Street, Unit C
Denver, Colorado 80221

CLIENT: Kerr-McGee Oil & Gas Onshore LP

LOGGED BY: Zach Mahaffey

PROJECT MANAGER: Robert Cornez

DRILLING CONTRACTOR: Tasman Geosciences, Inc.

DRILLING EQUIPMENT: AMS Powerprobe 9300-SK

DRILL BIT SIZE (INCHES): 2.375"

DATE STARTED - COMPLETED: 10/21/2016

TOTAL WELL DEPTH (FT. BGS): 20

DEPTH TO WATER (FT. BGS): 10.63 (11/30/16) ▼

HSR-Hall 64N66W31NWSW
Production Facility

BORING / WELL ID: BH01

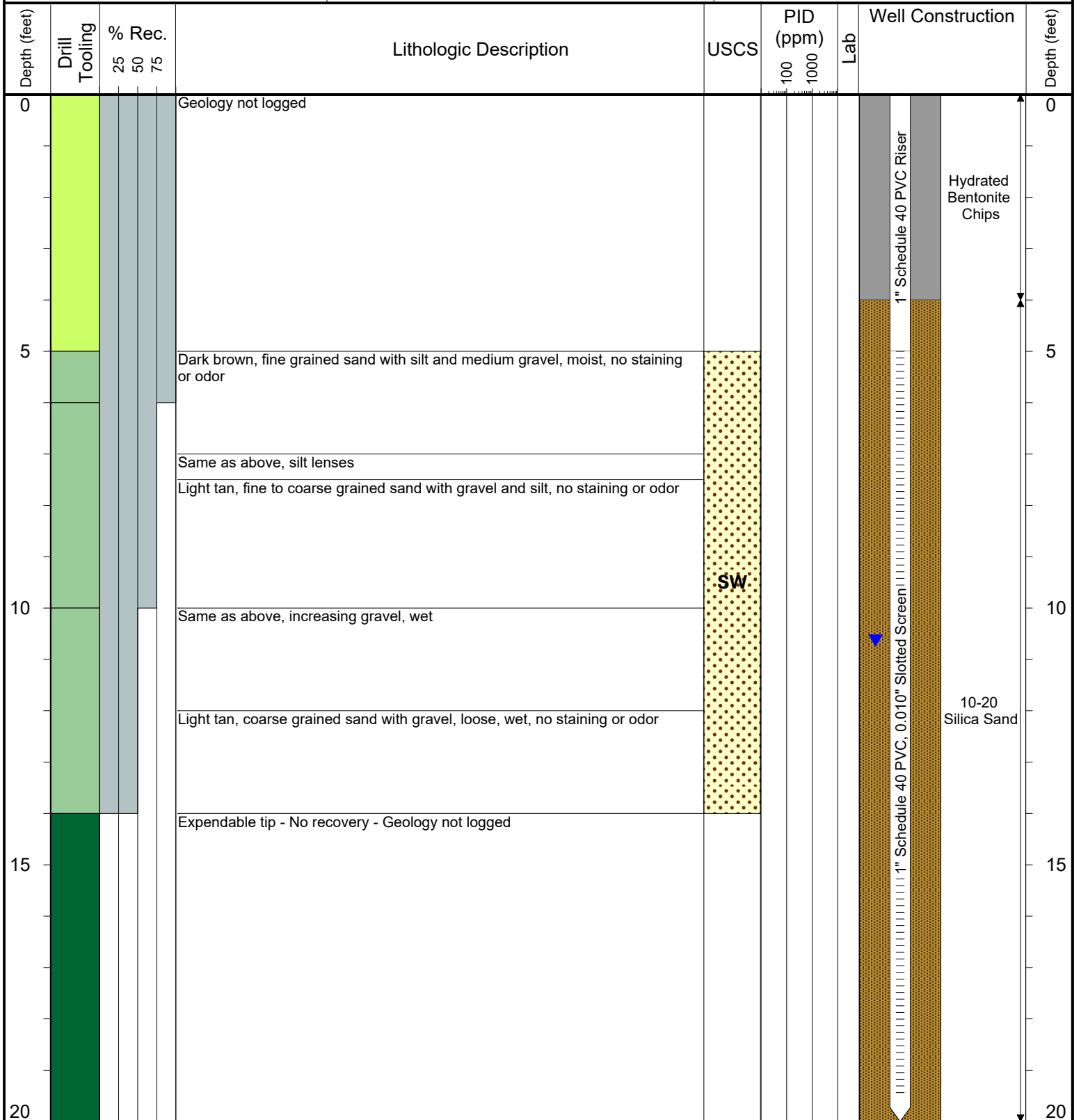
COMPLETION: Stick-up: 2.88'

NORTHING (CO STATE PLANE): 40.267313696

EASTING (CO STATE PLANE): -104.82557851

CASING ELEVATION (FT. AMSL): 4768.49

GROUND ELEVATION (FT. AMSL): 4765.61



Drilling / Sample Method:

- Macro-Core
- Hand Auger
- Expendable Well Tip
- Hydrovac

Laboratory Sample Types:

- Geotechnical Lab
- Analytical Chemistry Lab
- Geotechnical & Analytical Chemistry Lab



6899 Pecos Street, Unit C
Denver, Colorado 80221

CLIENT: Kerr-McGee Oil & Gas Onshore LP

LOGGED BY: Zach Mahaffey

PROJECT MANAGER: Robert Cornez

DRILLING CONTRACTOR: Tasman Geosciences, Inc.

DRILLING EQUIPMENT: AMS Powerprobe 9300-SK

DRILL BIT SIZE (INCHES): 2.375"

DATE STARTED - COMPLETED: 10/21/2016

TOTAL WELL DEPTH (FT. BGS): 20

DEPTH TO WATER (FT. BGS): 10.79 (11/30/16) ▼

HSR-Hall 64N66W31NWSW
Production Facility

BORING / WELL ID: BH02

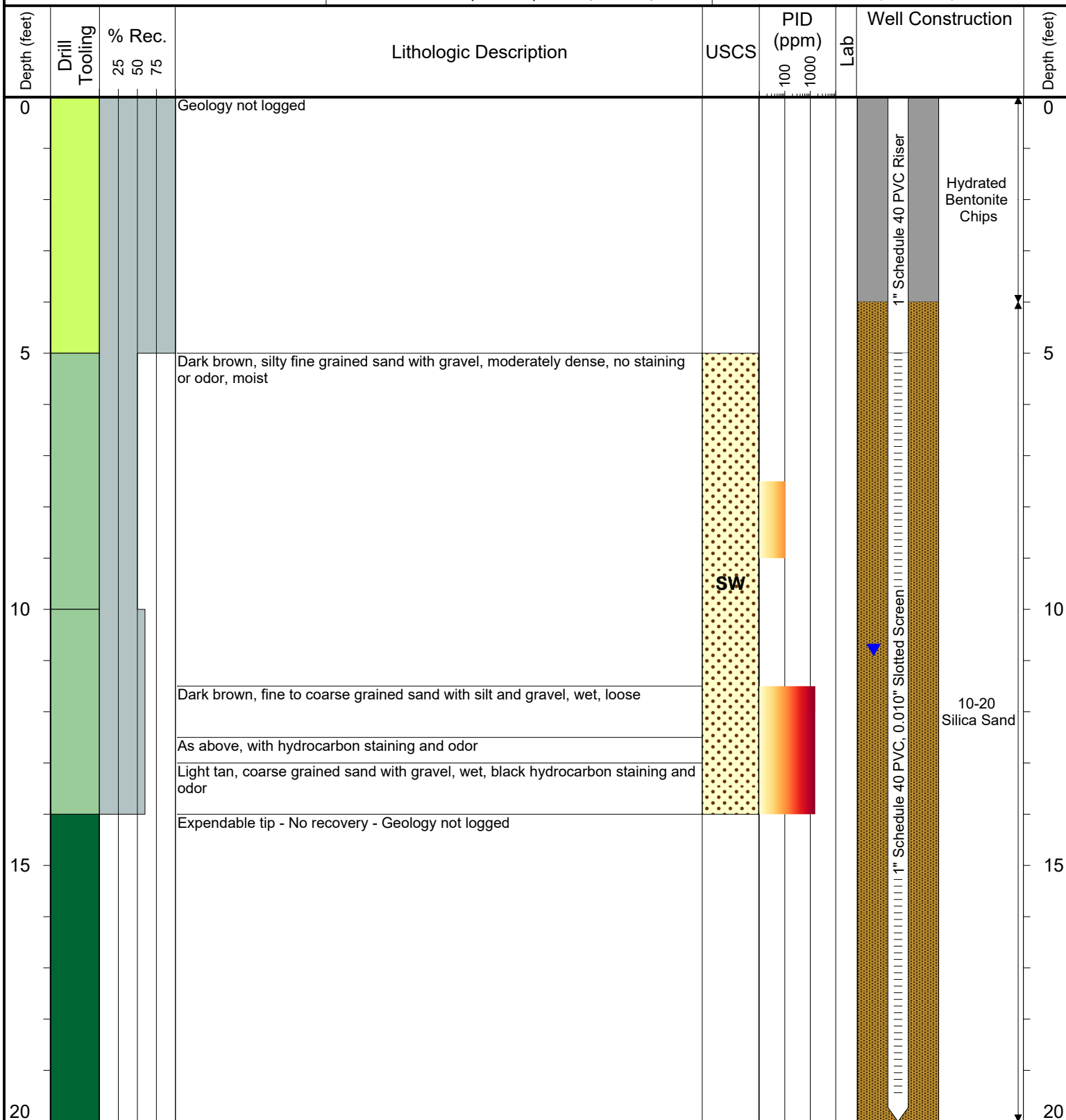
COMPLETION: Stick-up: 2.20'

NORTHING (CO STATE PLANE): 40.267388901

EASTING (CO STATE PLANE): -104.8255735

CASING ELEVATION (FT. AMSL): 4768.95

GROUND ELEVATION (FT. AMSL): 4765.75



Drilling / Sample Method:

- Macro-Core
- Hand Auger
- Expendable Well Tip
- Hydrovac

Laboratory Sample Types:

- Geotechnical Lab
- Analytical Chemistry Lab
- Geotechnical & Analytical Chemistry Lab



6899 Pecos Street, Unit C
Denver, Colorado 80221

CLIENT: Kerr-McGee Oil & Gas Onshore LP

LOGGED BY: Zach Mahaffey

PROJECT MANAGER: Robert Cornez

DRILLING CONTRACTOR: Tasman Geosciences, Inc.

DRILLING EQUIPMENT: AMS Powerprobe 9300-SK

DRILL BIT SIZE (INCHES): 2.375"

DATE STARTED - COMPLETED: 10/21/2016

TOTAL WELL DEPTH (FT. BGS): 20

DEPTH TO WATER (FT. BGS): 10.13 (11/30/16) ▼

HSR-Hall 64N66W31NWSW
Production Facility

BORING / WELL ID: BH03

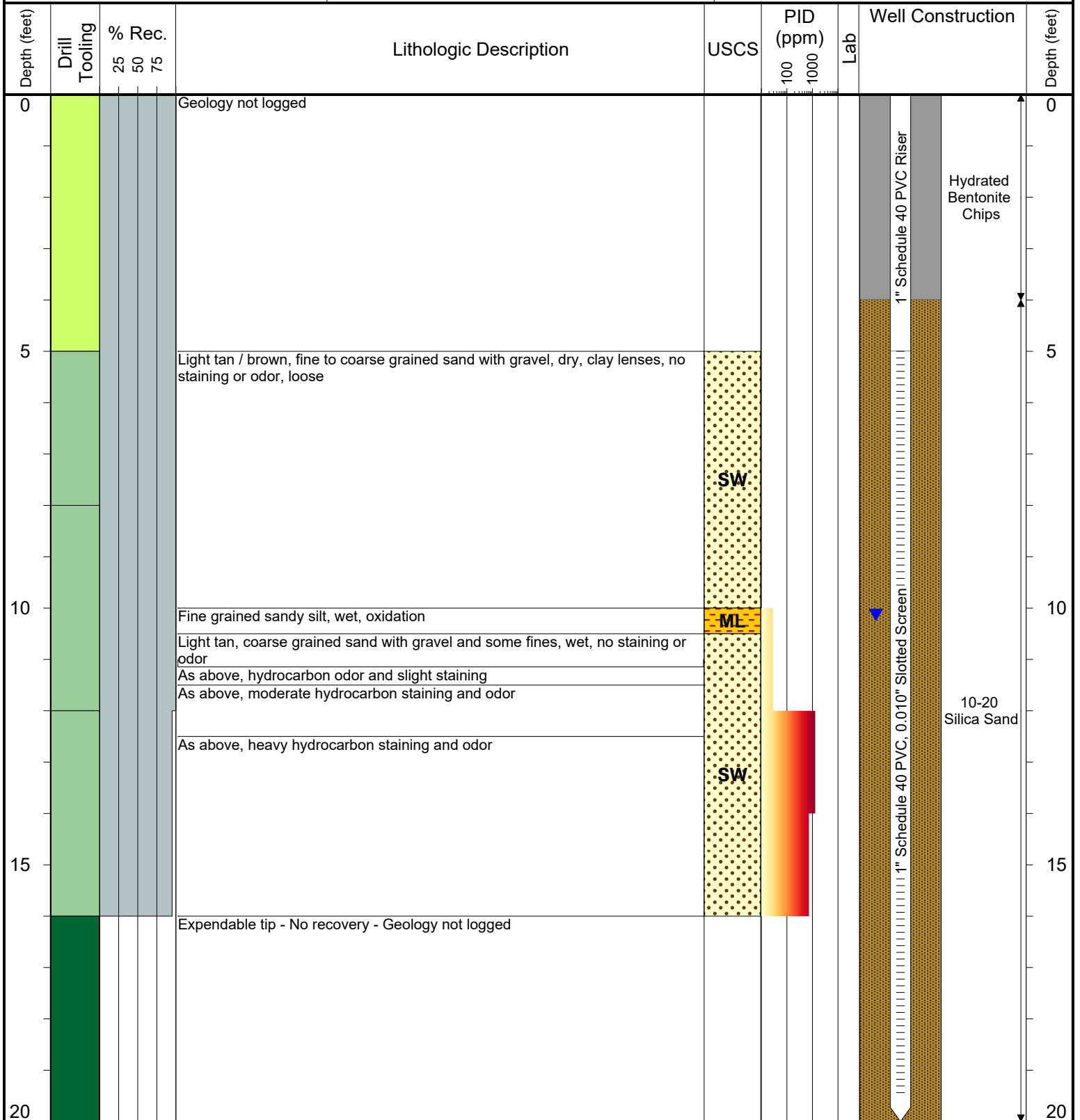
COMPLETION: Stick-up: 3.24'

NORTHING (CO STATE PLANE): 40.2675117

EASTING (CO STATE PLANE): -104.8255749

CASING ELEVATION (FT. AMSL): 4769.25

GROUND ELEVATION (FT. AMSL): 4766.01



Drilling / Sample Method:

- Macro-Core
- Hand Auger
- Expendable Well Tip
- Hydrovac

Laboratory Sample Types:

- Geotechnical Lab
- Analytical Chemistry Lab
- Geotechnical & Analytical Chemistry Lab



6899 Pecos Street, Unit C
Denver, Colorado 80221

CLIENT: Kerr-McGee Oil & Gas Onshore LP

LOGGED BY: Zach Mahaffey

PROJECT MANAGER: Robert Cornez

DRILLING CONTRACTOR: Tasman Geosciences, Inc.

DRILLING EQUIPMENT: AMS Powerprobe 9300-SK

DRILL BIT SIZE (INCHES): 2.375"

DATE STARTED - COMPLETED: 10/21/2016

TOTAL WELL DEPTH (FT. BGS): 20

DEPTH TO WATER (FT. BGS): 9.81 (11/30/16) ▼

HSR-Hall 64N66W31NWSW
Production Facility

BORING / WELL ID: BH04

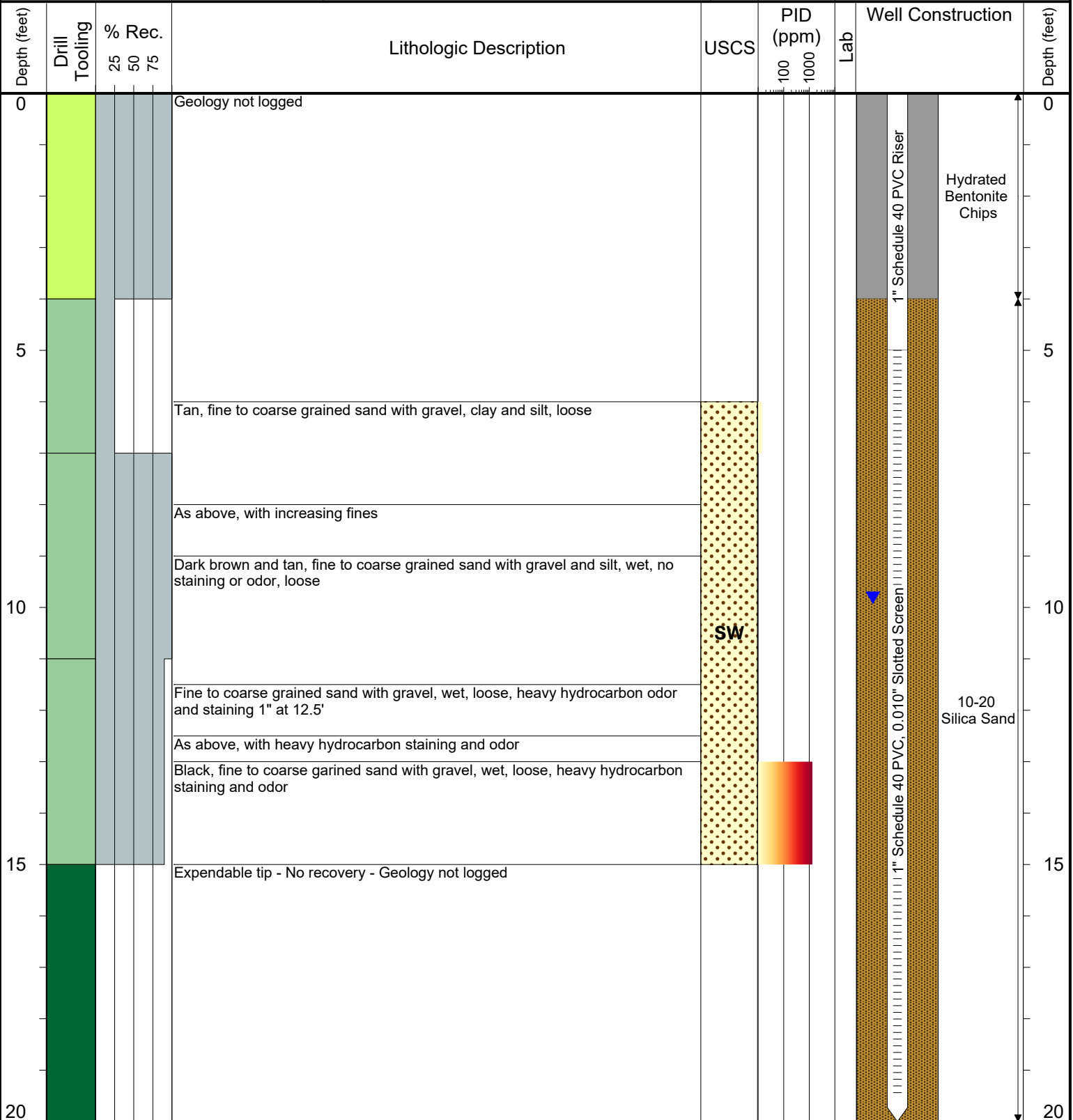
COMPLETION: Stick-up: 3.35'

NORTHING (CO STATE PLANE): 40.267387179

EASTING (CO STATE PLANE): -104.82565818

CASING ELEVATION (FT. AMSL): 4769.08

GROUND ELEVATION (FT. AMSL): 4765.73



Drilling / Sample Method:

- Macro-Core
- Hand Auger
- Expendable Well Tip
- Hydrovac

Laboratory Sample Types:

- Geotechnical Lab
- Analytical Chemistry Lab
- Geotechnical & Analytical Chemistry Lab



6899 Pecos Street, Unit C
Denver, Colorado 80221

CLIENT: Kerr-McGee Oil & Gas Onshore LP

LOGGED BY: Zach Mahaffey

PROJECT MANAGER: Robert Cornez

DRILLING CONTRACTOR: Tasman Geosciences, Inc.

DRILLING EQUIPMENT: AMS Powerprobe 9300-SK

DRILL BIT SIZE (INCHES): 2.375"

DATE STARTED - COMPLETED: 2/7/2017

TOTAL WELL DEPTH (FT. BGS): 20

DEPTH TO WATER (FT. BGS): 12.12 (2/16/17) ▼

HSR-Hall 64N66W31NWSW
Production Facility

BORING / WELL ID: BH05

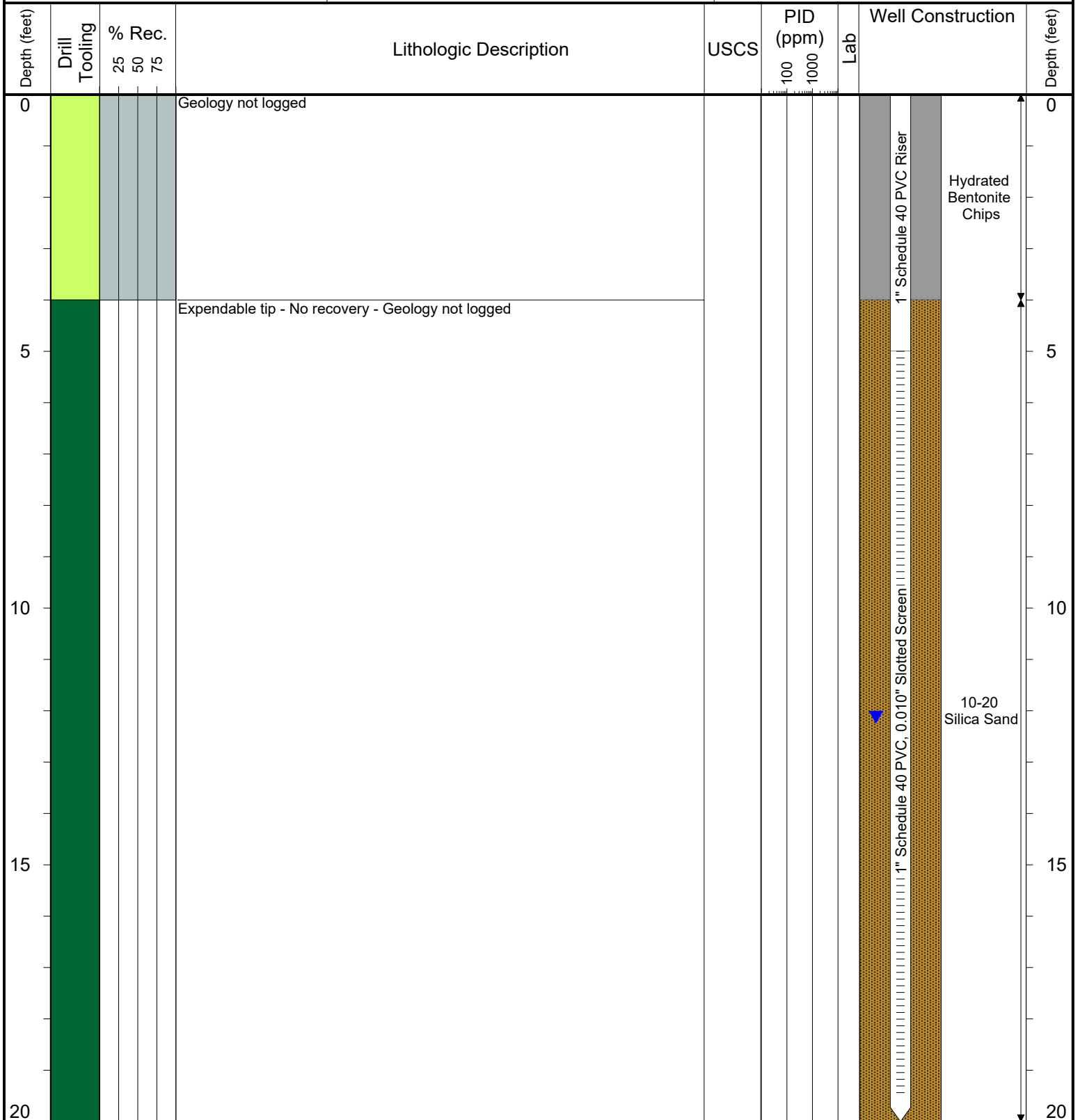
COMPLETION: Stick-up: 3.72'

NORTHING (CO STATE PLANE): 40.267317646

EASTING (CO STATE PLANE): -104.8254511

CASING ELEVATION (FT. AMSL): 4769.56

GROUND ELEVATION (FT. AMSL): 4765.84



Drilling / Sample Method:

- Macro-Core
- Hand Auger
- Expendable Well Tip
- Hydrovac

Laboratory Sample Types:

- Geotechnical Lab
- Analytical Chemistry Lab
- Geotechnical & Analytical Chemistry Lab



6899 Pecos Street, Unit C
Denver, Colorado 80221

CLIENT: Kerr-McGee Oil & Gas Onshore LP

LOGGED BY: Zach Mahaffey

PROJECT MANAGER: Robert Cornez

DRILLING CONTRACTOR: Tasman Geosciences, Inc.

DRILLING EQUIPMENT: AMS Powerprobe 9300-SK

DRILL BIT SIZE (INCHES): 2.375"

DATE STARTED - COMPLETED: 2/7/2017

TOTAL WELL DEPTH (FT. BGS): 20

DEPTH TO WATER (FT. BGS): 12.44 (2/16/17) ▼

HSR-Hall 64N66W31NWSW
Production Facility

BORING / WELL ID: BH06

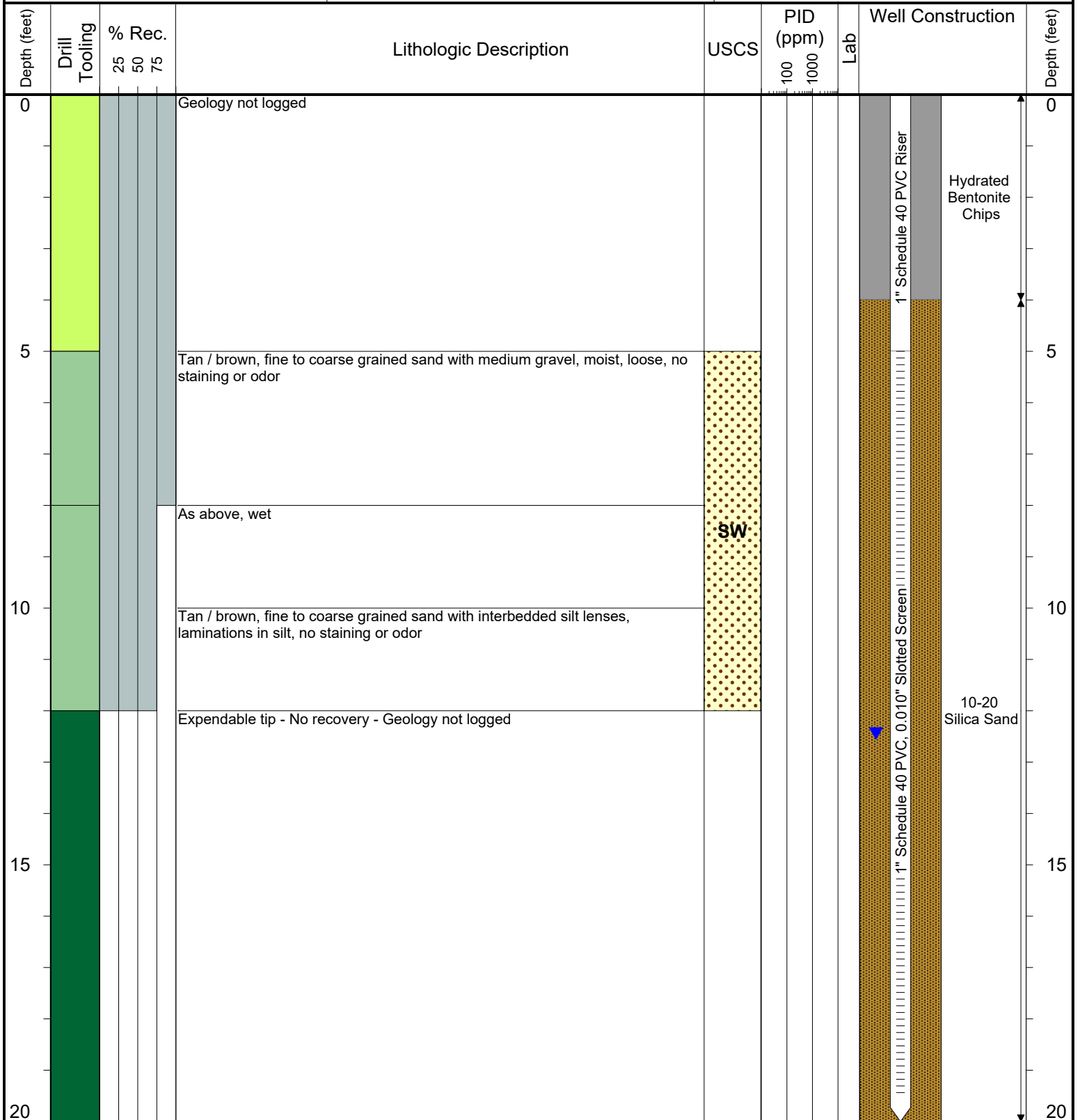
COMPLETION: Stick-up: 3.92'

NORTHING (CO STATE PLANE): 40.267399055

EASTING (CO STATE PLANE): -104.82545613

CASING ELEVATION (FT. AMSL): 4770.03

GROUND ELEVATION (FT. AMSL): 4766.11



Drilling / Sample Method:

- Macro-Core
- Hand Auger
- Expendable Well Tip
- Hydrovac

Laboratory Sample Types:

- Geotechnical Lab
- Analytical Chemistry Lab
- Geotechnical & Analytical Chemistry Lab



6899 Pecos Street, Unit C
Denver, Colorado 80221

CLIENT: Kerr-McGee Oil & Gas Onshore LP

LOGGED BY: Zach Mahaffey

PROJECT MANAGER: Robert Cornez

DRILLING CONTRACTOR: Tasman Geosciences, Inc.

DRILLING EQUIPMENT: AMS Powerprobe 9300-SK

DRILL BIT SIZE (INCHES): 2.375"

DATE STARTED - COMPLETED: 2/7/2017

TOTAL WELL DEPTH (FT. BGS): 20

DEPTH TO WATER (FT. BGS): 12.53 (2/16/17) ▼

HSR-Hall 64N66W31NWSW
Production Facility

BORING / WELL ID: BH07

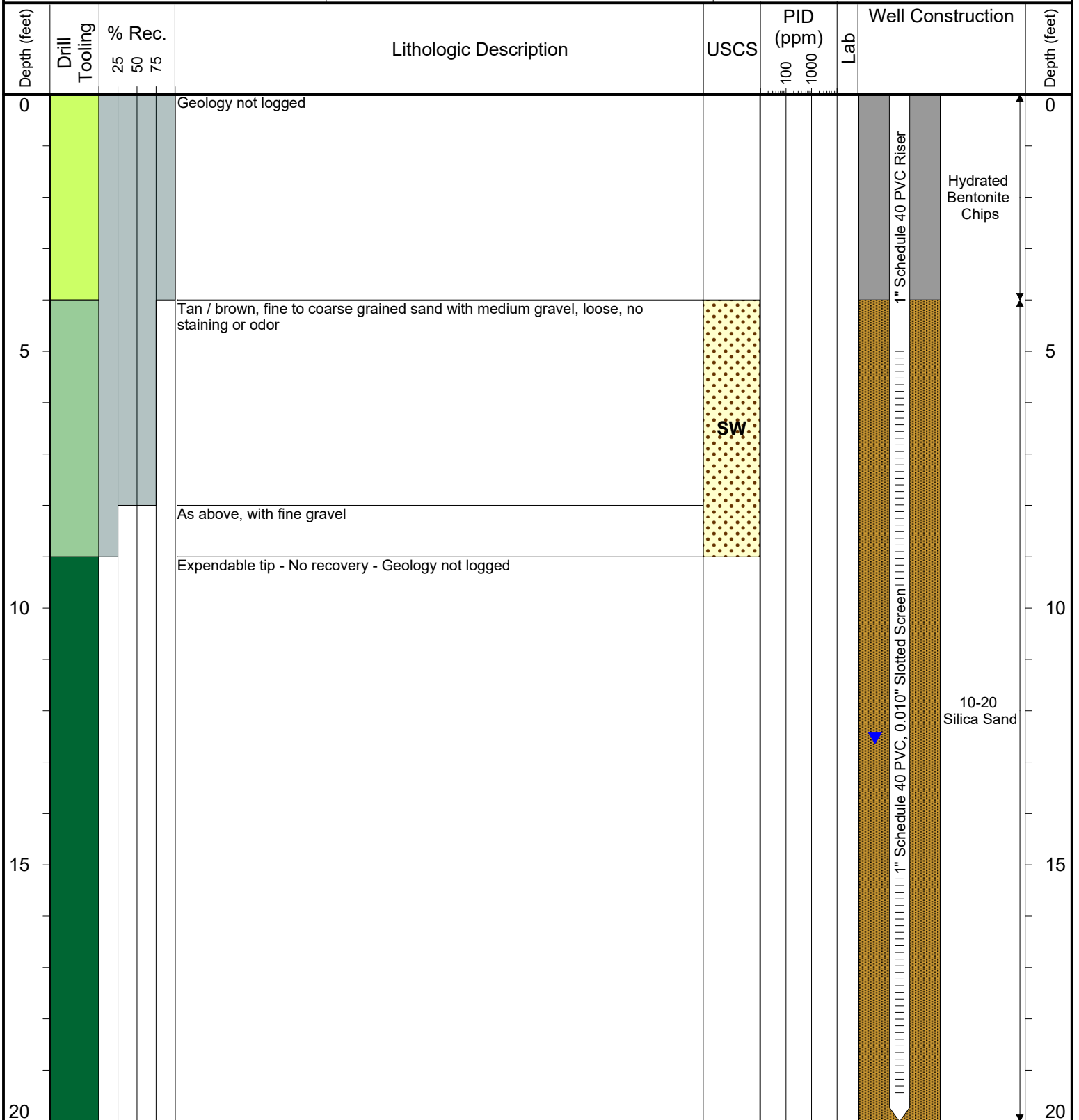
COMPLETION: Stick-up: 3.62'

NORTHING (CO STATE PLANE): 40.267501004

EASTING (CO STATE PLANE): -104.82546212

CASING ELEVATION (FT. AMSL): 4769.76

GROUND ELEVATION (FT. AMSL): 4766.14



Drilling / Sample Method:

- Macro-Core
- Hand Auger
- Expendable Well Tip
- Hydrovac

Laboratory Sample Types:

- Geotechnical Lab
- Analytical Chemistry Lab
- Geotechnical & Analytical Chemistry Lab



6899 Pecos Street, Unit C
Denver, Colorado 80221

CLIENT: Kerr-McGee Oil & Gas Onshore LP

LOGGED BY: Eric Siegel, P. G.

PROJECT MANAGER: Robert Cornez

DRILLING CONTRACTOR: Tasman Geosciences, Inc.

DRILLING EQUIPMENT: AMS Powerprobe 9300-SK

DRILL BIT SIZE (INCHES): 2.375"

DATE STARTED - COMPLETED: 2/7/2017

TOTAL WELL DEPTH (FT. BGS): 20

DEPTH TO WATER (FT. BGS): 12.63 (2/16/17) ▼

HSR-Hall 64N66W31NWSW
Production Facility

BORING / WELL ID: BH08

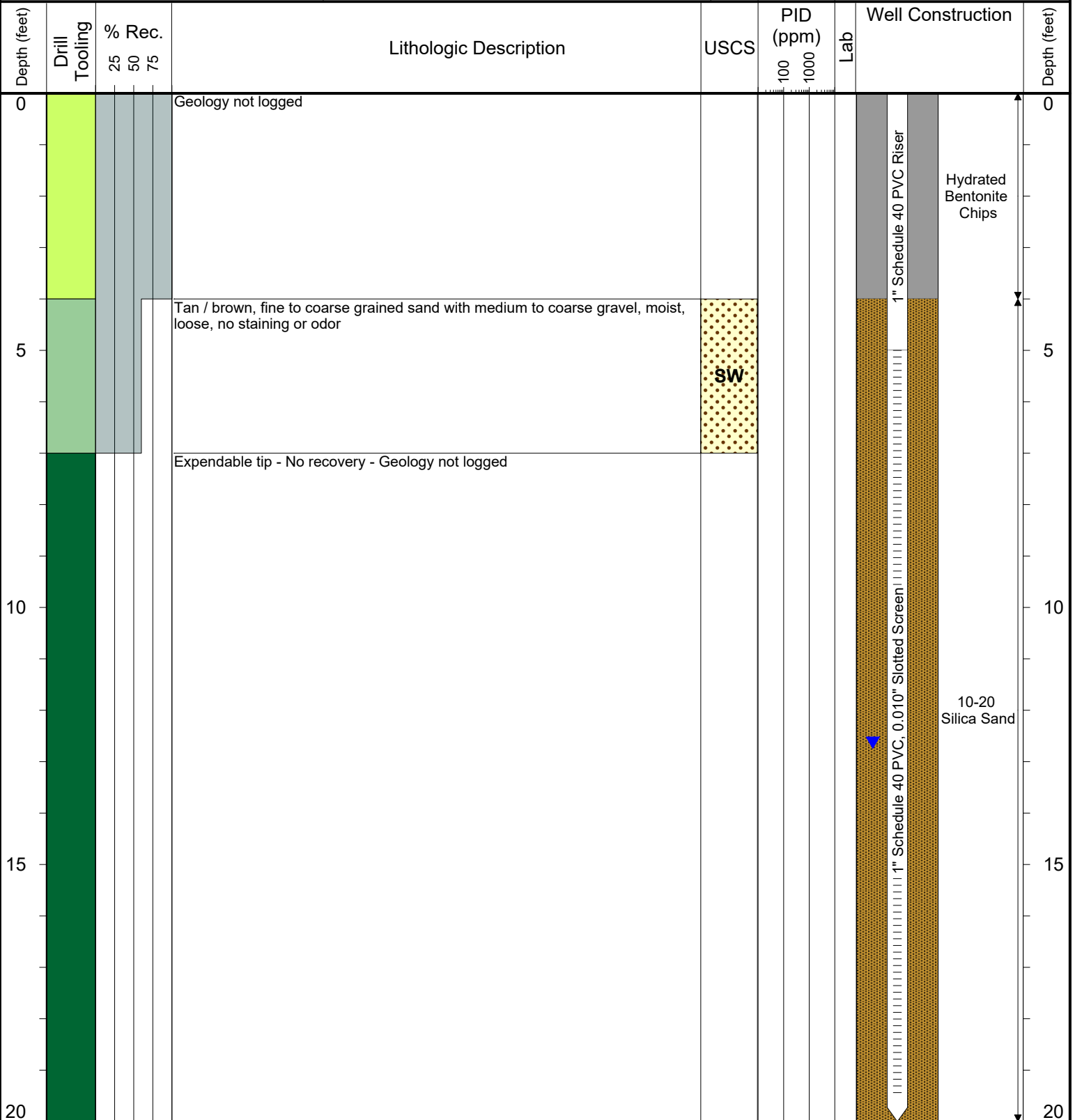
COMPLETION: Stick-up: 3.73'

NORTHING (CO STATE PLANE): 40.267563625

EASTING (CO STATE PLANE): -104.82557061

CASING ELEVATION (FT. AMSL): 4769.92

GROUND ELEVATION (FT. AMSL): 4766.19



Drilling / Sample Method:

- Macro-Core
- Hand Auger
- Expendable Well Tip
- Hydrovac

Laboratory Sample Types:

- Geotechnical Lab
- Analytical Chemistry Lab
- Geotechnical & Analytical Chemistry Lab



6899 Pecos Street, Unit C
Denver, Colorado 80221

CLIENT: Kerr-McGee Oil & Gas Onshore LP

LOGGED BY: Eric Siegel, P. G.

PROJECT MANAGER: Robert Cornez

DRILLING CONTRACTOR: Tasman Geosciences, Inc.

DRILLING EQUIPMENT: AMS Powerprobe 9300-SK

DRILL BIT SIZE (INCHES): 2.375"

DATE STARTED - COMPLETED: 4/26/2017

TOTAL WELL DEPTH (FT. BGS): 20

DEPTH TO WATER (FT. BGS): 12.16 (5/17/17) ▼

HSR-Hall 64N66W31NWSW
Production Facility

BORING / WELL ID: BH09

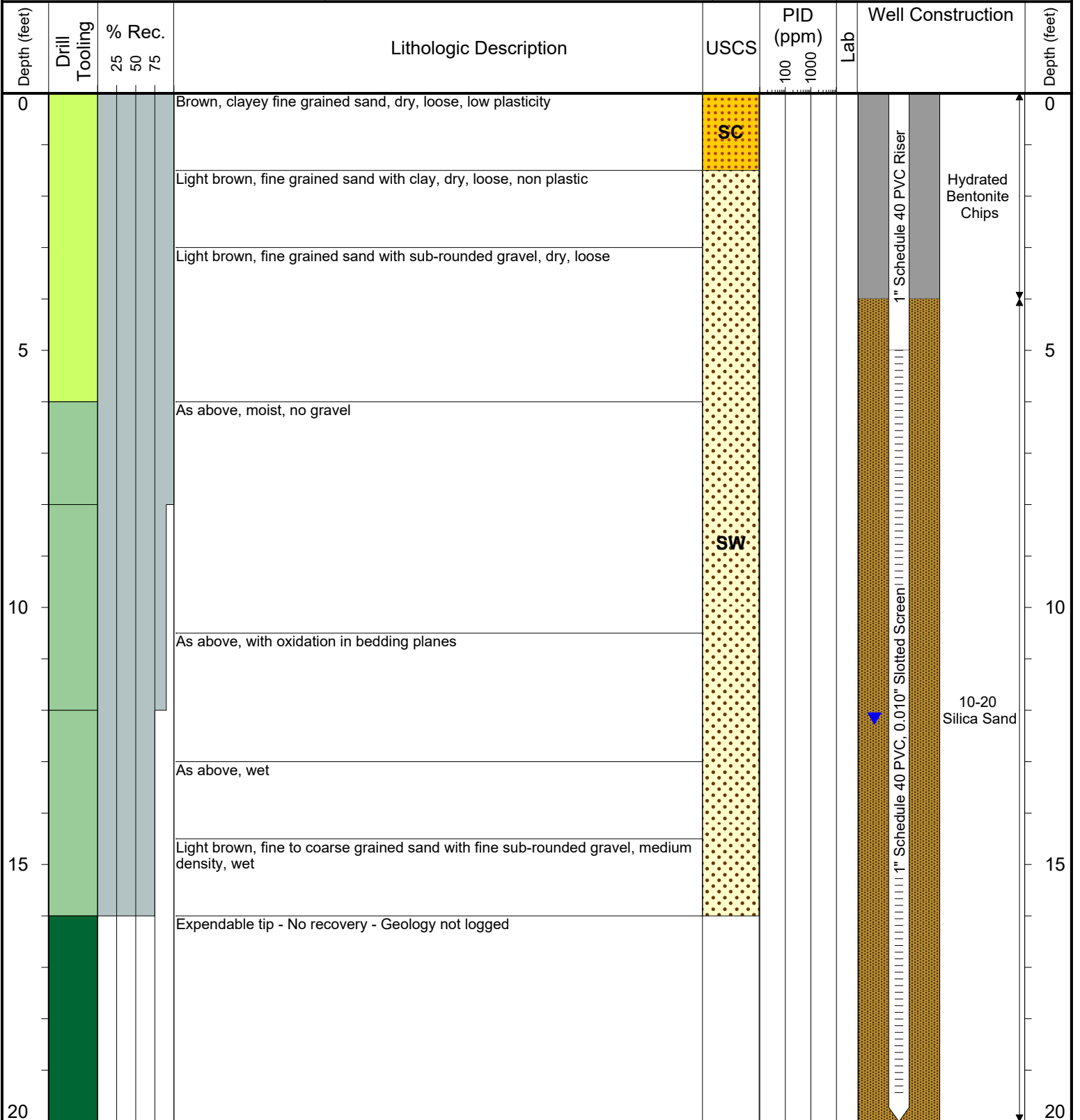
COMPLETION: Stick-up: 3.40'

NORTHING (CO STATE PLANE): 40.267597589

EASTING (CO STATE PLANE): -104.82546276

CASING ELEVATION (FT. AMSL): 4769.67

GROUND ELEVATION (FT. AMSL): 4766.27



Drilling / Sample Method:

- Macro-Core
- Hand Auger
- Expendable Well Tip
- Hydrovac

Laboratory Sample Types:

- Geotechnical Lab
- Analytical Chemistry Lab
- Geotechnical & Analytical Chemistry Lab



6899 Pecos Street, Unit C
Denver, Colorado 80221

CLIENT: Kerr-McGee Oil & Gas Onshore LP

LOGGED BY: Eric Siegel, P. G.

PROJECT MANAGER: Robert Cornez

DRILLING CONTRACTOR: Tasman Geosciences, Inc.

DRILLING EQUIPMENT: AMS Powerprobe 9300-SK

DRILL BIT SIZE (INCHES): 2.375"

DATE STARTED - COMPLETED: 4/26/2017

TOTAL WELL DEPTH (FT. BGS): 20

DEPTH TO WATER (FT. BGS): 12.14 (5/17/17) ▼

HSR-Hall 64N66W31NWSW
Production Facility

BORING / WELL ID: BH10

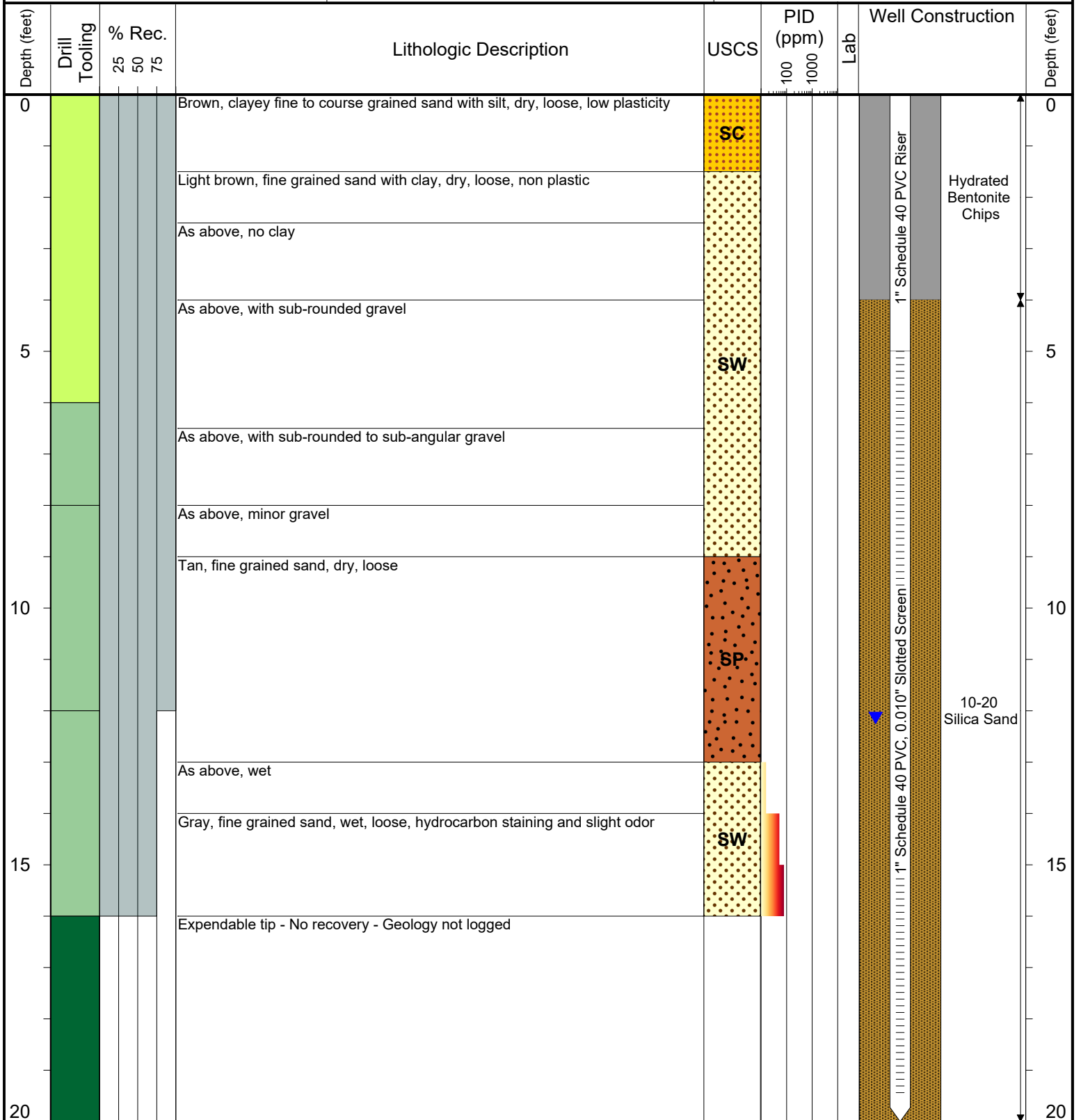
COMPLETION: Stick-up: 3.71'

NORTHING (CO STATE PLANE): 40.267610007

EASTING (CO STATE PLANE): -104.82559271

CASING ELEVATION (FT. AMSL): 4769.89

GROUND ELEVATION (FT. AMSL): 4766.18



Drilling / Sample Method:

- Macro-Core
- Hand Auger
- Expendable Well Tip
- Hydrovac

Laboratory Sample Types:

- Geotechnical Lab
- Analytical Chemistry Lab
- Geotechnical & Analytical Chemistry Lab



6899 Pecos Street, Unit C
Denver, Colorado 80221

CLIENT: Kerr-McGee Oil & Gas Onshore LP

LOGGED BY: Eric Siegel, P. G.

PROJECT MANAGER: Robert Cornez

DRILLING CONTRACTOR: Tasman Geosciences, Inc.

DRILLING EQUIPMENT: AMS Powerprobe 9300-SK

DRILL BIT SIZE (INCHES): 2.375"

DATE STARTED - COMPLETED: 4/26/2017

TOTAL WELL DEPTH (FT. BGS): 20

DEPTH TO WATER (FT. BGS): 11.42 (5/17/17) ▼

HSR-Hall 64N66W31NWSW
Production Facility

BORING / WELL ID: BH11

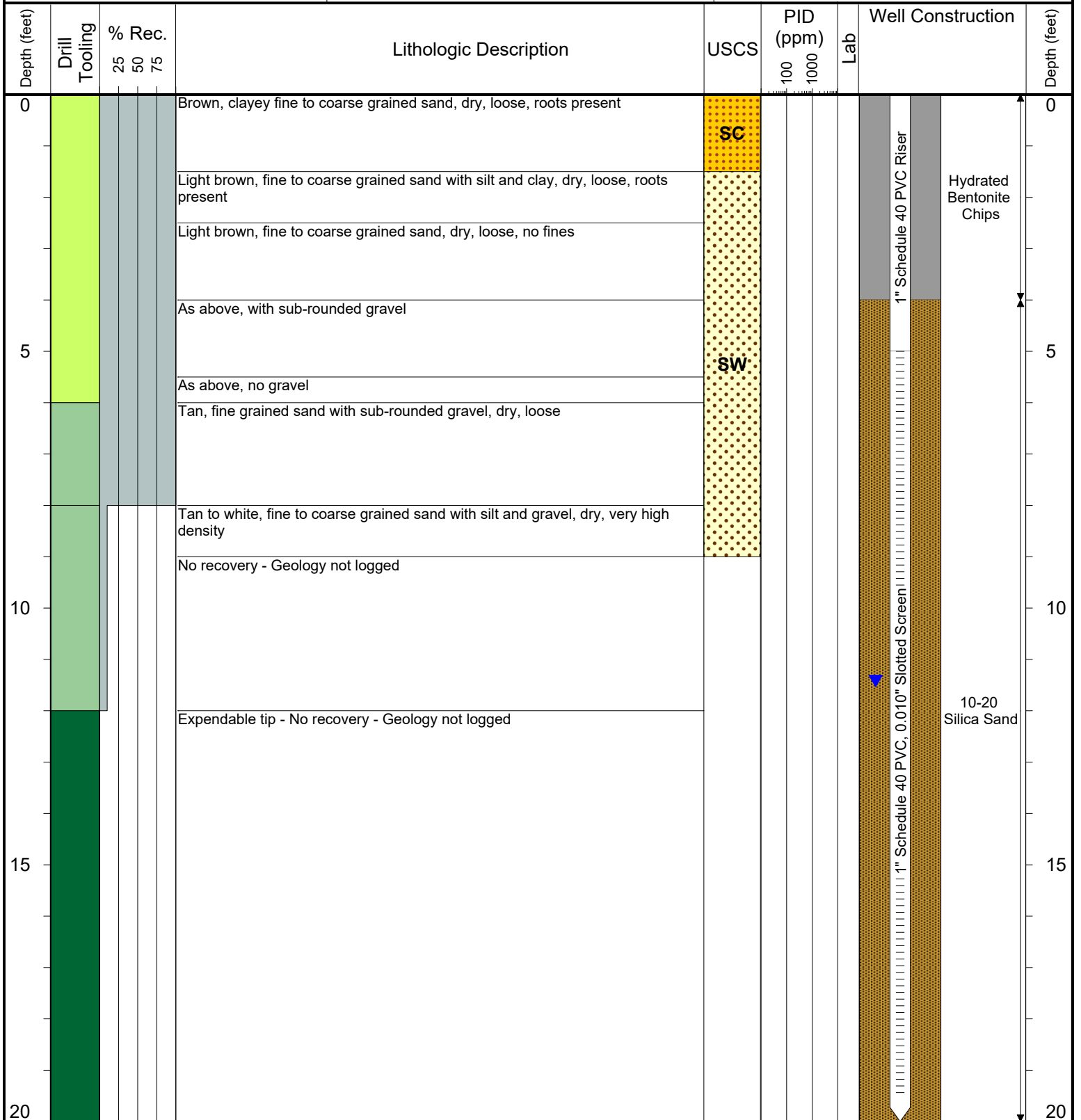
COMPLETION: Stick-up: 3.54'

NORTHING (CO STATE PLANE): 40.267536581

EASTING (CO STATE PLANE): -104.82567042

CASING ELEVATION (FT. AMSL): 4769.06

GROUND ELEVATION (FT. AMSL): 4765.52



Drilling / Sample Method:

- Macro-Core
- Hand Auger
- Expendable Well Tip
- Hydrovac

Laboratory Sample Types:

- Geotechnical Lab
- Analytical Chemistry Lab
- Geotechnical & Analytical Chemistry Lab



6899 Pecos Street, Unit C
Denver, Colorado 80221

CLIENT: Kerr-McGee Oil & Gas Onshore LP

LOGGED BY: Brandon LeVasseur

PROJECT MANAGER: Robert Cornez

DRILLING CONTRACTOR: Tasman Geosciences, Inc.

DRILLING EQUIPMENT: AMS Powerprobe 9500

DRILL BIT SIZE (INCHES): 2.375"

DATE STARTED - COMPLETED: 2/22/2018

TOTAL WELL DEPTH (FT. BGS): 20

DEPTH TO WATER (FT. BGS): 10.92 (4/9/18) ▼

HSR-Hall 64N66W31NWSW
Production Facility

BORING / WELL ID: BH12

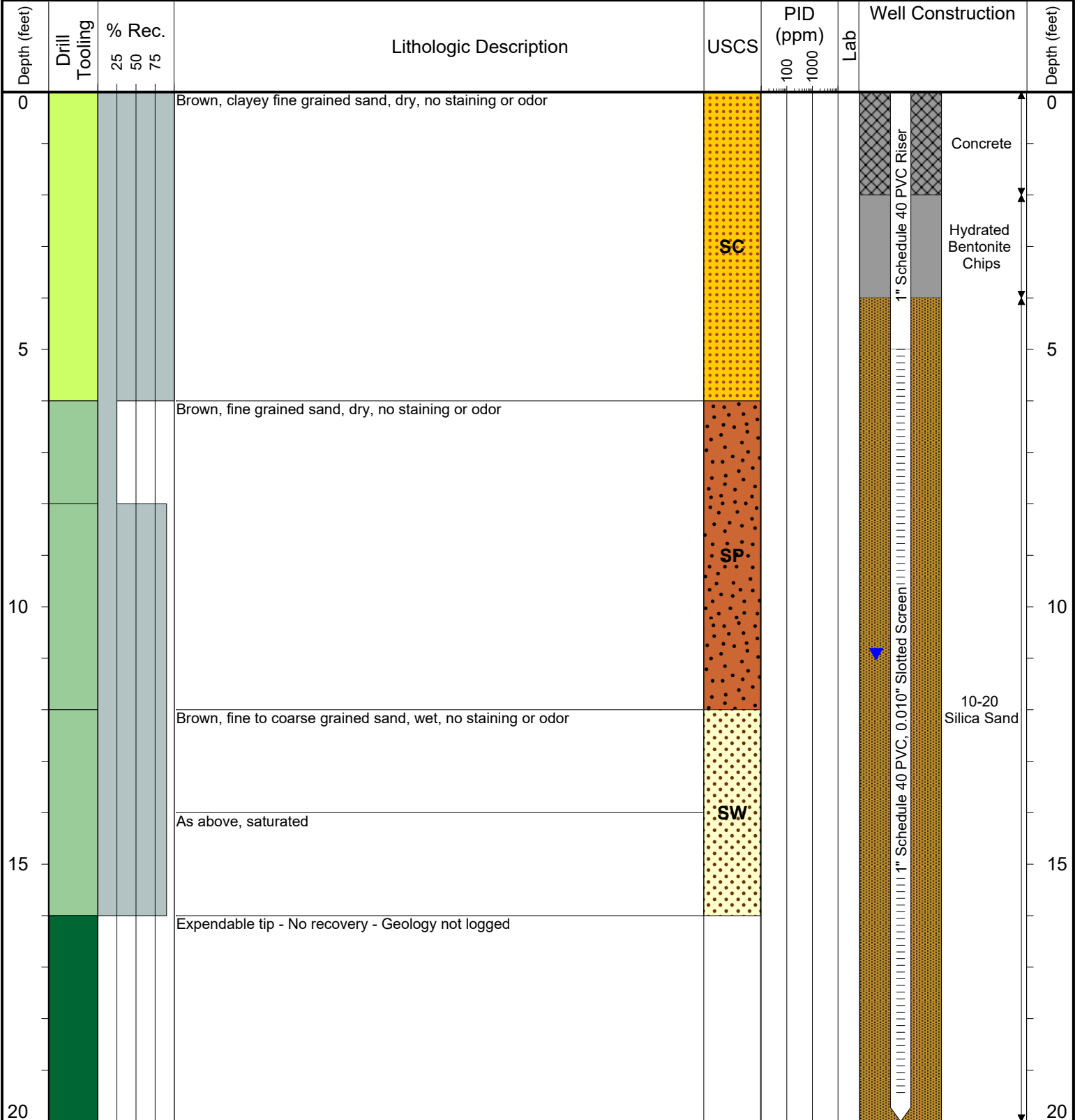
COMPLETION: Flush Mount

NORTHING (CO STATE PLANE): 40.26756345

EASTING (CO STATE PLANE): -104.82577048

CASING ELEVATION (FT. AMSL): 4765.11

GROUND ELEVATION (FT. AMSL): 4765.29



Drilling / Sample Method:

- Macro-Core
- Hand Auger
- Expendable Well Tip
- Hydrovac

Laboratory Sample Types:

- Geotechnical Lab
- Analytical Chemistry Lab
- Geotechnical & Analytical Chemistry Lab



6899 Pecos Street, Unit C
Denver, Colorado 80221

CLIENT: Kerr-McGee Oil & Gas Onshore LP

LOGGED BY: Brandon LeVasseur

PROJECT MANAGER: Robert Cornez

DRILLING CONTRACTOR: Tasman Geosciences, Inc.

DRILLING EQUIPMENT: AMS Powerprobe 9500

DRILL BIT SIZE (INCHES): 2.375"

DATE STARTED - COMPLETED: 2/22/2018

TOTAL WELL DEPTH (FT. BGS): 20

DEPTH TO WATER (FT. BGS): 11.47 (4/9/18) ▼

HSR-Hall 64N66W31NWSW
Production Facility

BORING / WELL ID: BH13

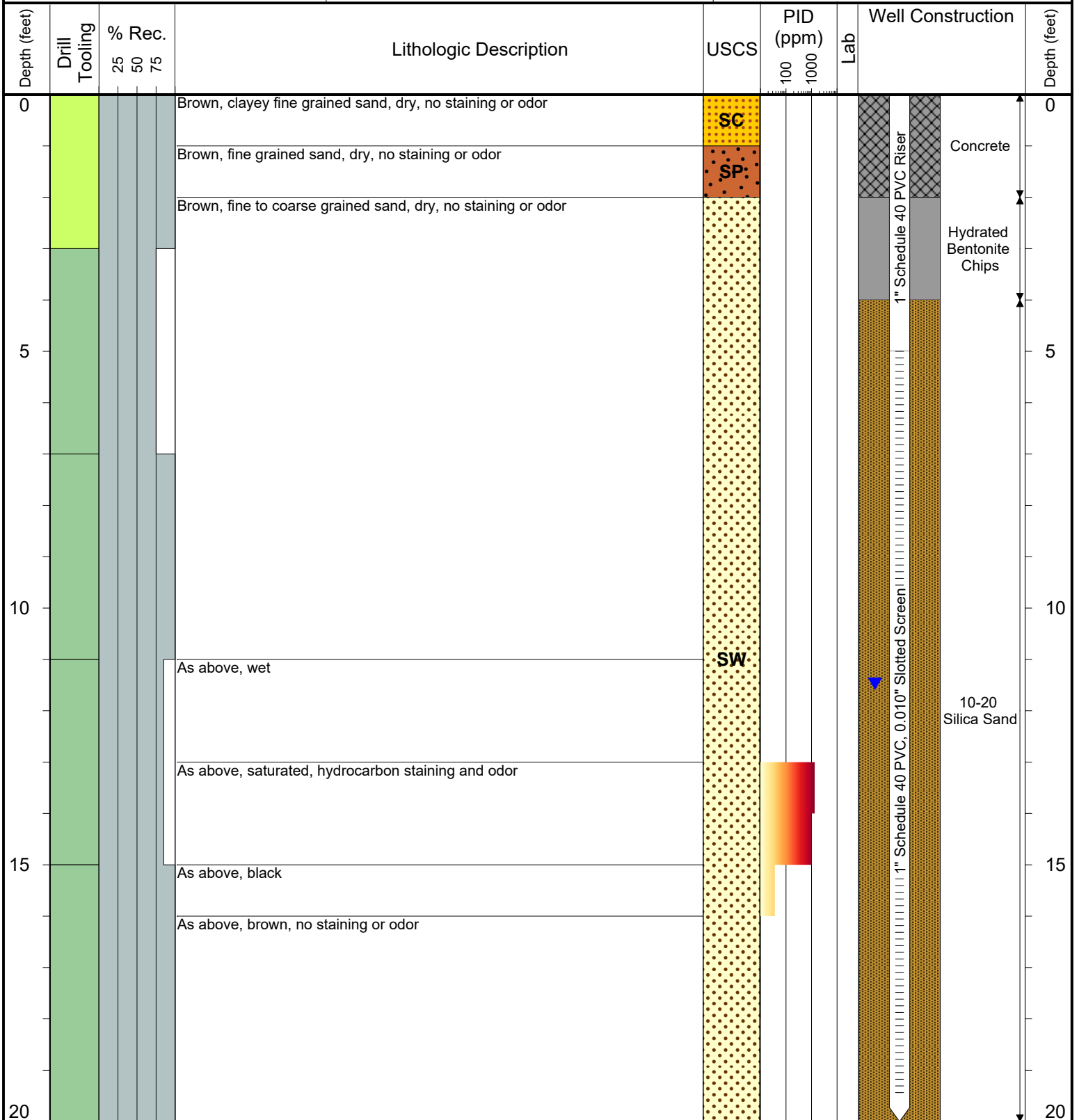
COMPLETION: Stick-up: 3.62'

NORTHING (CO STATE PLANE): 40.26765837

EASTING (CO STATE PLANE): -104.82568376

CASING ELEVATION (FT. AMSL): 4769.41

GROUND ELEVATION (FT. AMSL): 4765.79



Drilling / Sample Method:

- Macro-Core
- Hand Auger
- Expendable Well Tip
- Hydrovac

Laboratory Sample Types:

- Geotechnical Lab
- Analytical Chemistry Lab
- Geotechnical & Analytical Chemistry Lab



6899 Pecos Street, Unit C
Denver, Colorado 80221

CLIENT: Kerr-McGee Oil & Gas Onshore LP

LOGGED BY: Brandon LeVasseur

PROJECT MANAGER: Robert Cornez

DRILLING CONTRACTOR: Tasman Geosciences, Inc.

DRILLING EQUIPMENT: AMS Powerprobe 9500

DRILL BIT SIZE (INCHES): 2.375"

DATE STARTED - COMPLETED: 2/22/2018

TOTAL WELL DEPTH (FT. BGS): 20

DEPTH TO WATER (FT. BGS): 12.04 (4/9/18) ▼

HSR-Hall 64N66W31NWSW
Production Facility

BORING / WELL ID: BH14

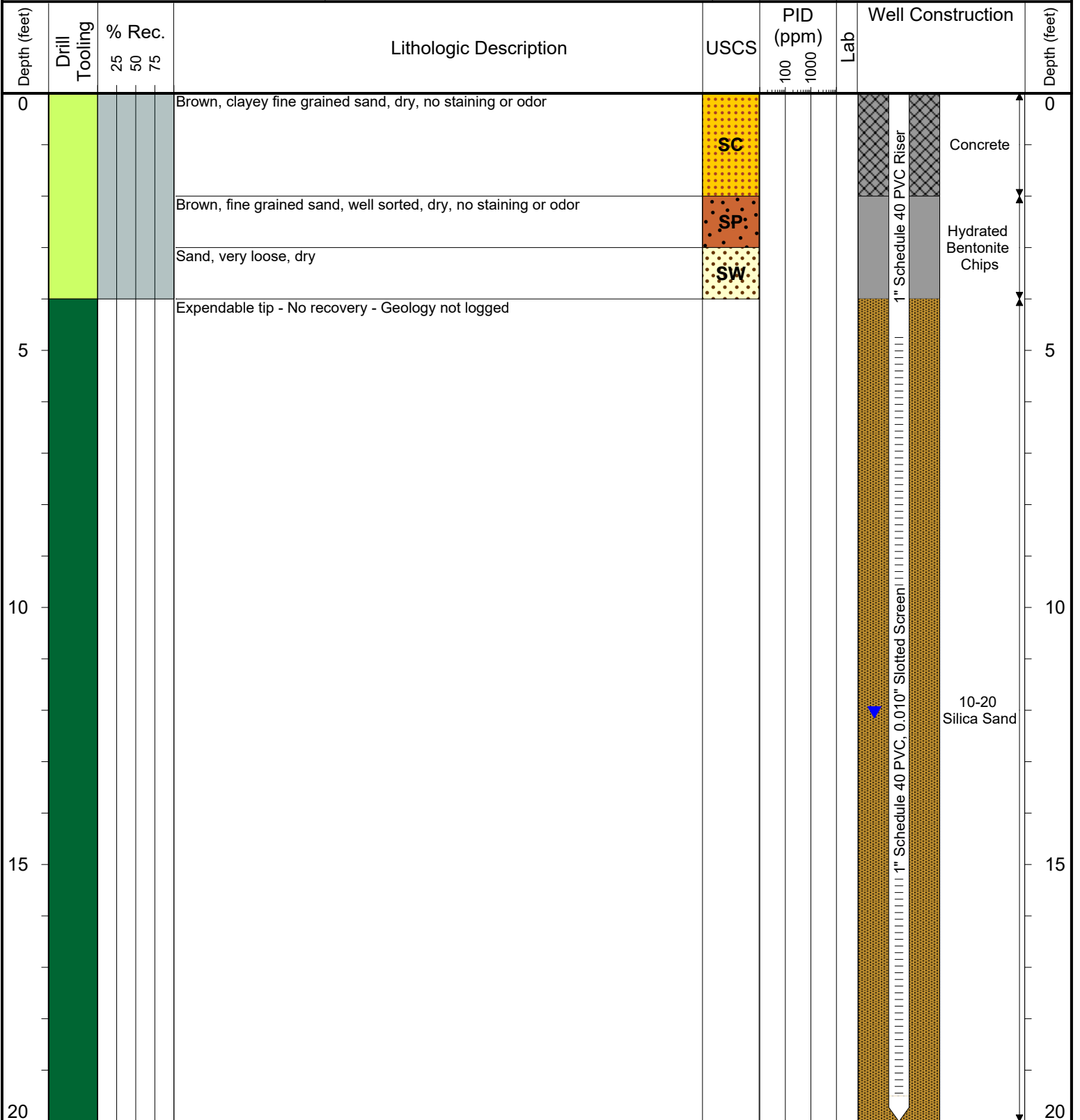
COMPLETION: Stick-up: 3.63'

NORTHING (CO STATE PLANE): 40.267672232

EASTING (CO STATE PLANE): -104.82551938

CASING ELEVATION (FT. AMSL): 4770.02

GROUND ELEVATION (FT. AMSL): 4766.39



Drilling / Sample Method:

- Macro-Core
- Hand Auger
- Expendable Well Tip
- Hydrovac

Laboratory Sample Types:

- Geotechnical Lab
- Analytical Chemistry Lab
- Geotechnical & Analytical Chemistry Lab



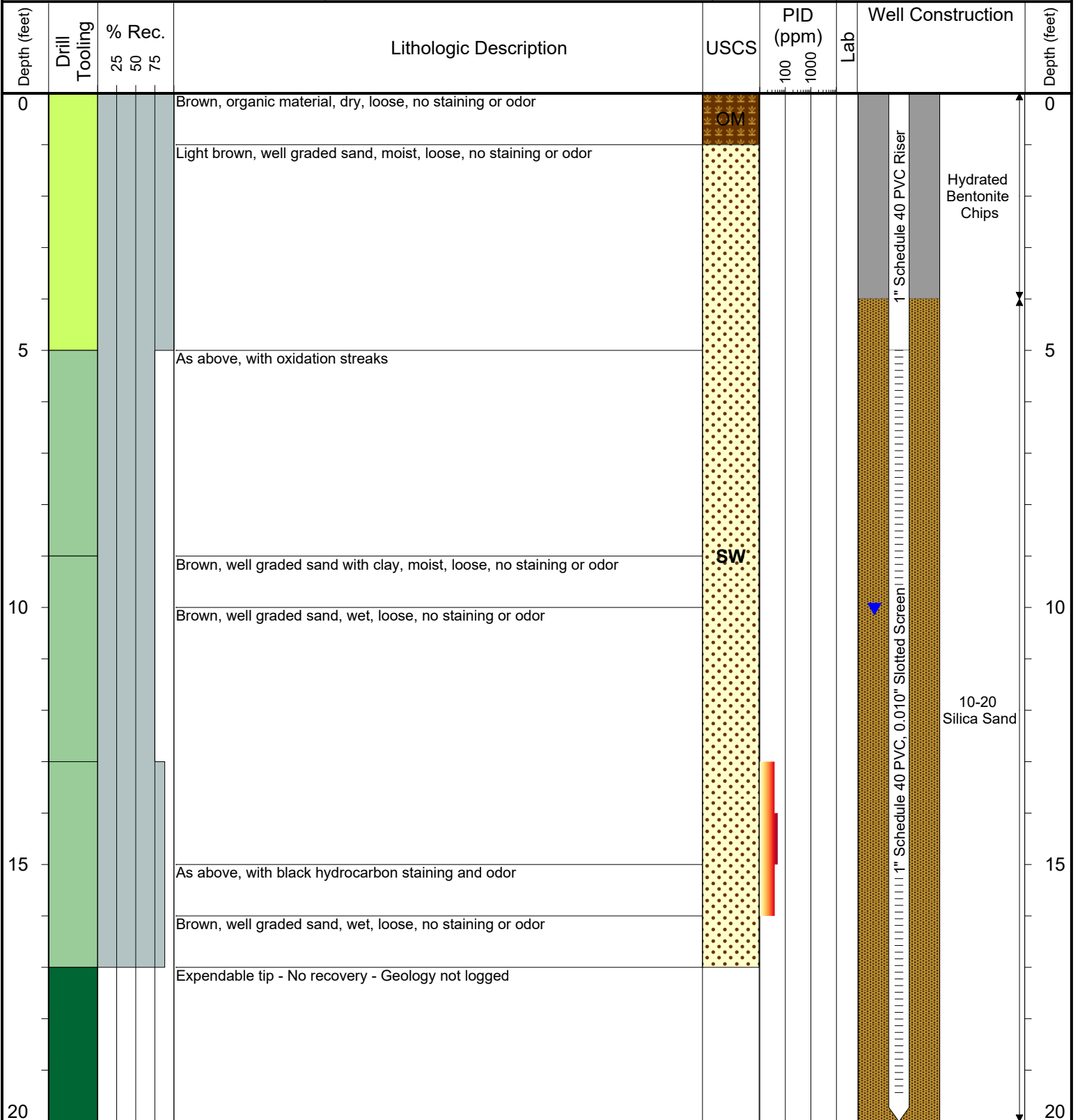
6899 Pecos Street, Unit C
Denver, Colorado 80221

CLIENT: Kerr-McGee Oil & Gas Onshore LP
 LOGGED BY: Brandon LeVasseur
 PROJECT MANAGER: Robert Cornez
 DRILLING CONTRACTOR: Tasman Geosciences, Inc.
 DRILLING EQUIPMENT: AMS Powerprobe 9300-SK
 DRILL BIT SIZE (INCHES): 2.375"
 DATE STARTED - COMPLETED: 10/10/2018
 TOTAL WELL DEPTH (FT. BGS): 20
 DEPTH TO WATER (FT. BGS): 10.03 (11/12/18) ▼

HSR-Hall 64N66W31NWSW
Production Facility

BORING / WELL ID: BH15

COMPLETION: Stick-up: 1.90'
 NORTHING (CO STATE PLANE): 40.267746796
 EASTING (CO STATE PLANE): -104.825661445
 CASING ELEVATION (FT. AMSL): 4767.85
 GROUND ELEVATION (FT. AMSL): 4765.95



Drilling / Sample Method:

- Macro-Core
- Hand Auger
- Expendable Well Tip
- Hydrovac

Laboratory Sample Types:

- Geotechnical Lab
- Analytical Chemistry Lab
- Geotechnical & Analytical Chemistry Lab



6899 Pecos Street, Unit C
Denver, Colorado 80221

CLIENT: Kerr-McGee Oil & Gas Onshore LP

LOGGED BY: Brandon LeVasseur

PROJECT MANAGER: Robert Cornez

DRILLING CONTRACTOR: Tasman Geosciences, Inc.

DRILLING EQUIPMENT: AMS Powerprobe 9300-SK

DRILL BIT SIZE (INCHES): 2.375"

DATE STARTED - COMPLETED: 1/9/2019

TOTAL WELL DEPTH (FT. BGS): 20

DEPTH TO WATER (FT. BGS): 12.24 (1/23/19) ▼

HSR-Hall 64N66W31NWSW
Production Facility

BORING / WELL ID: BH16

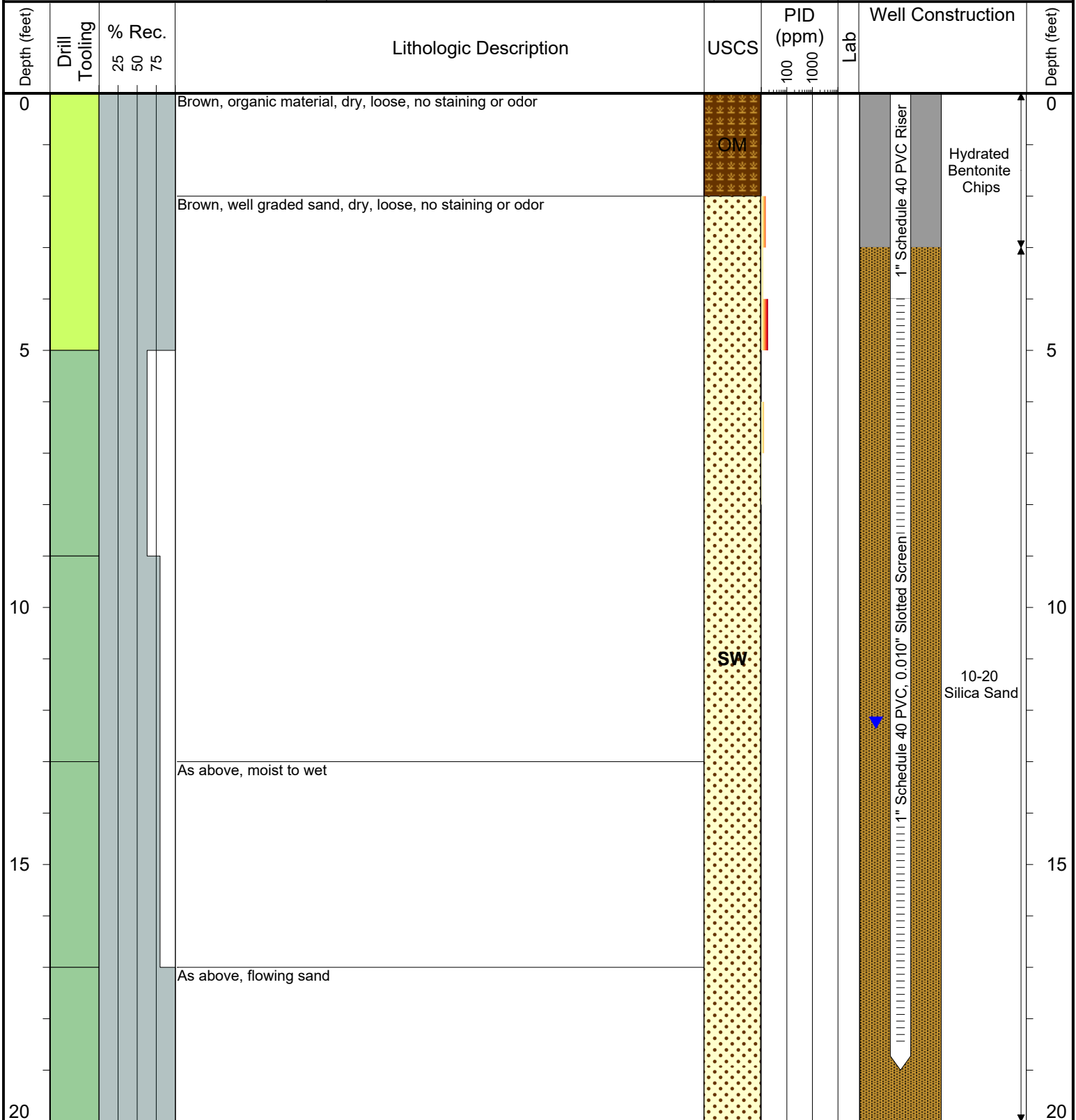
COMPLETION: Stick-up: 2.01'

NORTHING (CO STATE PLANE): 40.26781468811

EASTING (CO STATE PLANE): -104.82554151521

CASING ELEVATION (FT. AMSL): 4768.1

GROUND ELEVATION (FT. AMSL): 4766.09



Drilling / Sample Method:

- Macro-Core
- Hand Auger
- Expendable Well Tip
- Hydrovac

Laboratory Sample Types:

- Geotechnical Lab
- Analytical Chemistry Lab
- Geotechnical & Analytical Chemistry Lab



6899 Pecos Street, Unit C
Denver, Colorado 80221

CLIENT: Kerr-McGee Oil & Gas Onshore LP

LOGGED BY: Brandon LeVasseur

PROJECT MANAGER: Robert Cornez

DRILLING CONTRACTOR: Tasman Geosciences, Inc.

DRILLING EQUIPMENT: AMS Powerprobe 9500

DRILL BIT SIZE (INCHES): 2.375"

DATE STARTED - COMPLETED: 1/9/2019

TOTAL WELL DEPTH (FT. BGS): 20

DEPTH TO WATER (FT. BGS): 11.08 (1/23/19) ▼

HSR-Hall 64N66W31NWSW
Production Facility

BORING / WELL ID: BH17

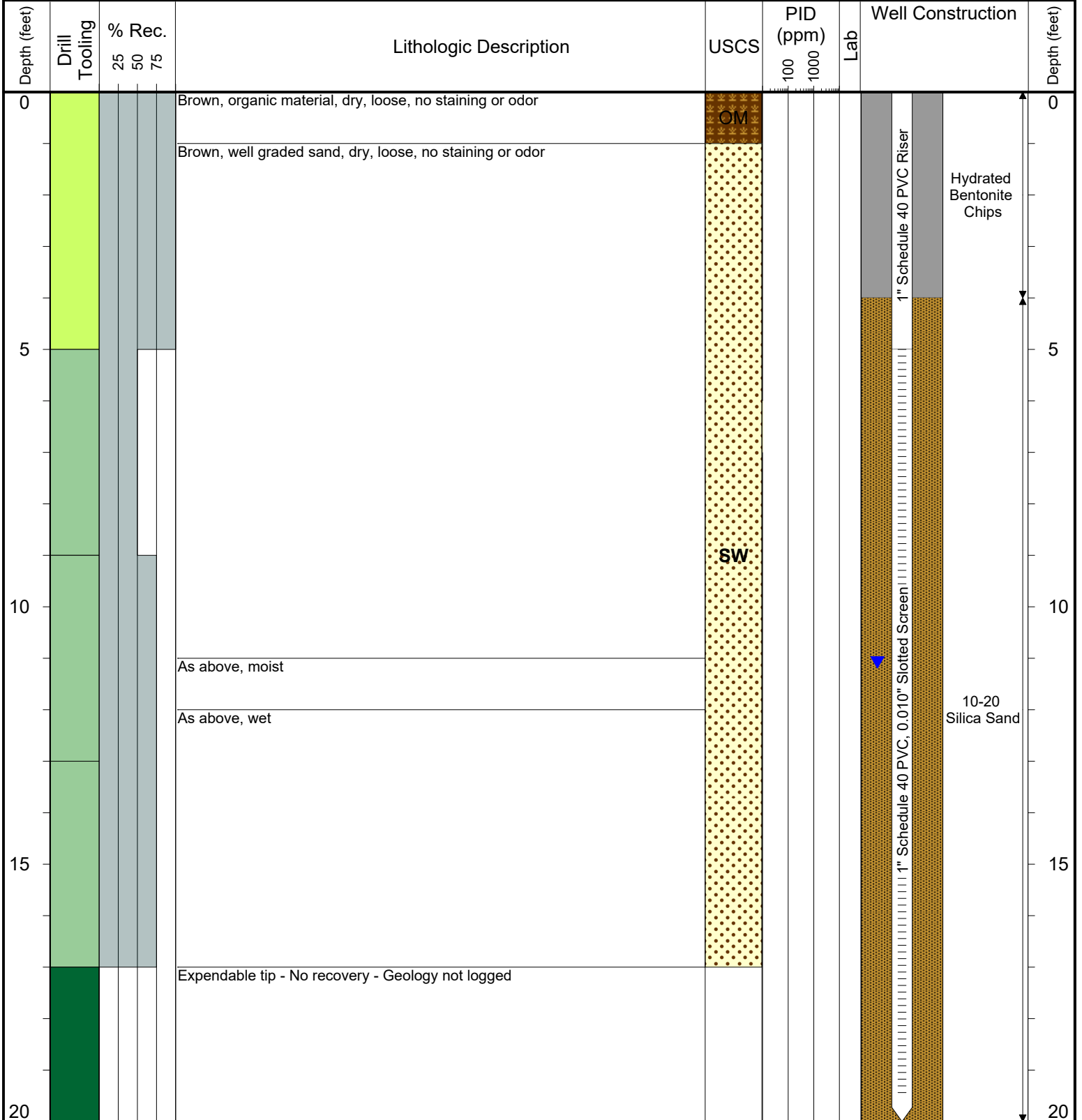
COMPLETION: Flush Mount

NORTHING (CO STATE PLANE): 40.267702538076

EASTING (CO STATE PLANE): -104.82586383537

CASING ELEVATION (FT. AMSL): 4764.75

GROUND ELEVATION (FT. AMSL): 4764.99



Drilling / Sample Method:

- Macro-Core
- Hand Auger
- Expendable Well Tip
- Hydrovac

Laboratory Sample Types:

- Geotechnical Lab
- Analytical Chemistry Lab
- Geotechnical & Analytical Chemistry Lab



6899 Pecos Street, Unit C
Denver, Colorado 80221

CLIENT: Kerr-McGee Oil & Gas Onshore LP

LOGGED BY: Brandon LeVasseur

PROJECT MANAGER: Robert Cornez

DRILLING CONTRACTOR: Tasman Geosciences, Inc.

DRILLING EQUIPMENT: AMS Powerprobe 9500

DRILL BIT SIZE (INCHES): 2.375"

DATE STARTED - COMPLETED: 1/9/2019

TOTAL WELL DEPTH (FT. BGS): 20

DEPTH TO WATER (FT. BGS): 10.97 (1/23/19) ▼

HSR-Hall 64N66W31NWSW
Production Facility

BORING / WELL ID: BH18

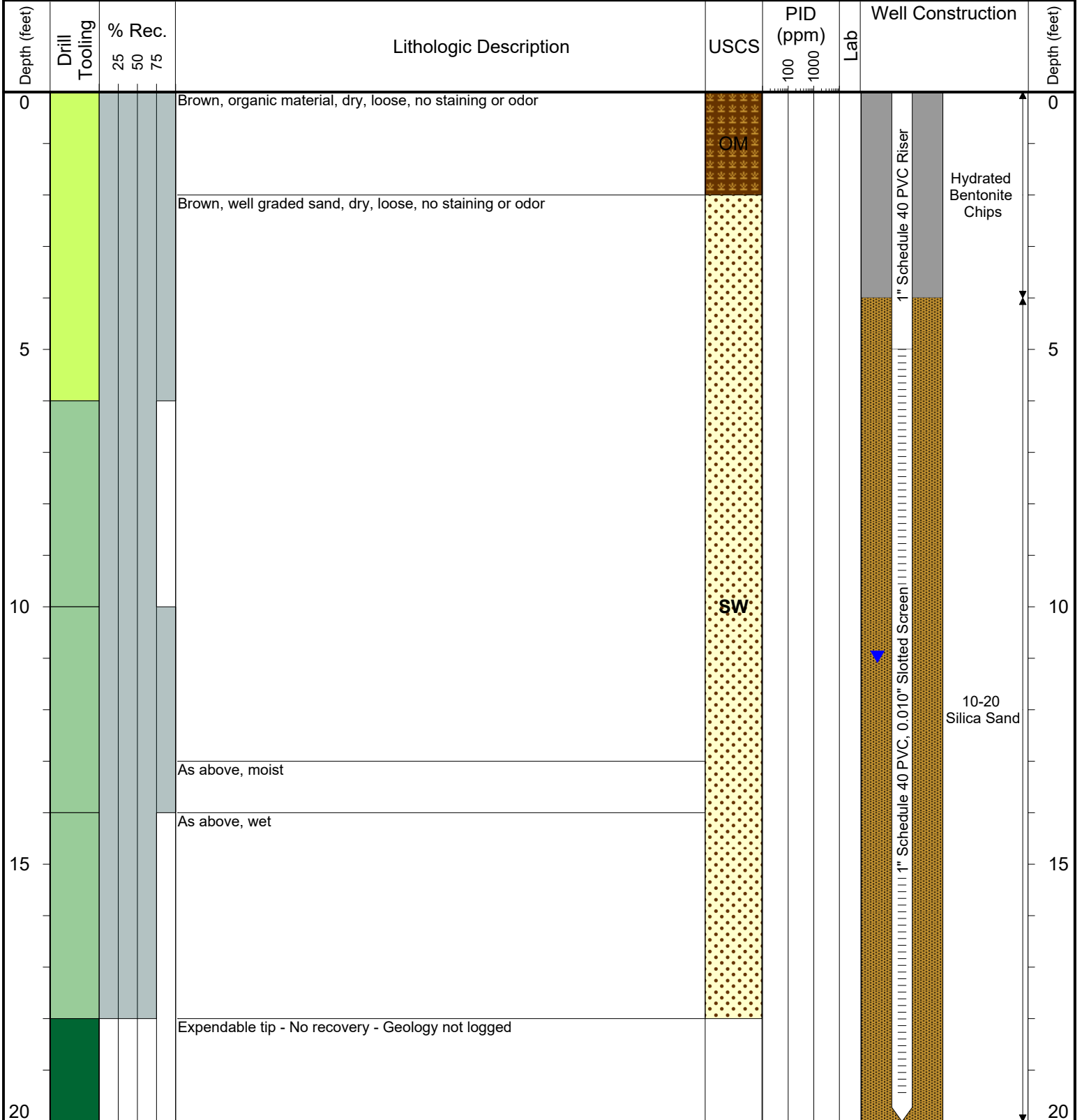
COMPLETION: Flush Mount

NORTHING (CO STATE PLANE): 40.267854384483

EASTING (CO STATE PLANE): -104.82583554521

CASING ELEVATION (FT. AMSL): 4764.61

GROUND ELEVATION (FT. AMSL): 4764.82



Drilling / Sample Method:

- Macro-Core
- Hand Auger
- Expendable Well Tip
- Hydrovac

Laboratory Sample Types:

- Geotechnical Lab
- Analytical Chemistry Lab
- Geotechnical & Analytical Chemistry Lab



6899 Pecos Street, Unit C
Denver, Colorado 80221

CLIENT: Kerr-McGee Oil & Gas Onshore LP

LOGGED BY: Brandon LeVasseur

PROJECT MANAGER: Robert Cornez

DRILLING CONTRACTOR: Tasman Geosciences, Inc.

DRILLING EQUIPMENT: AMS Powerprobe 9500

DRILL BIT SIZE (INCHES): 2.375"

DATE STARTED - COMPLETED: 1/9/2019

TOTAL WELL DEPTH (FT. BGS): 20

DEPTH TO WATER (FT. BGS): 11.81 (1/23/19) ▼

HSR-Hall 64N66W31NWSW
Production Facility

BORING / WELL ID: BH19

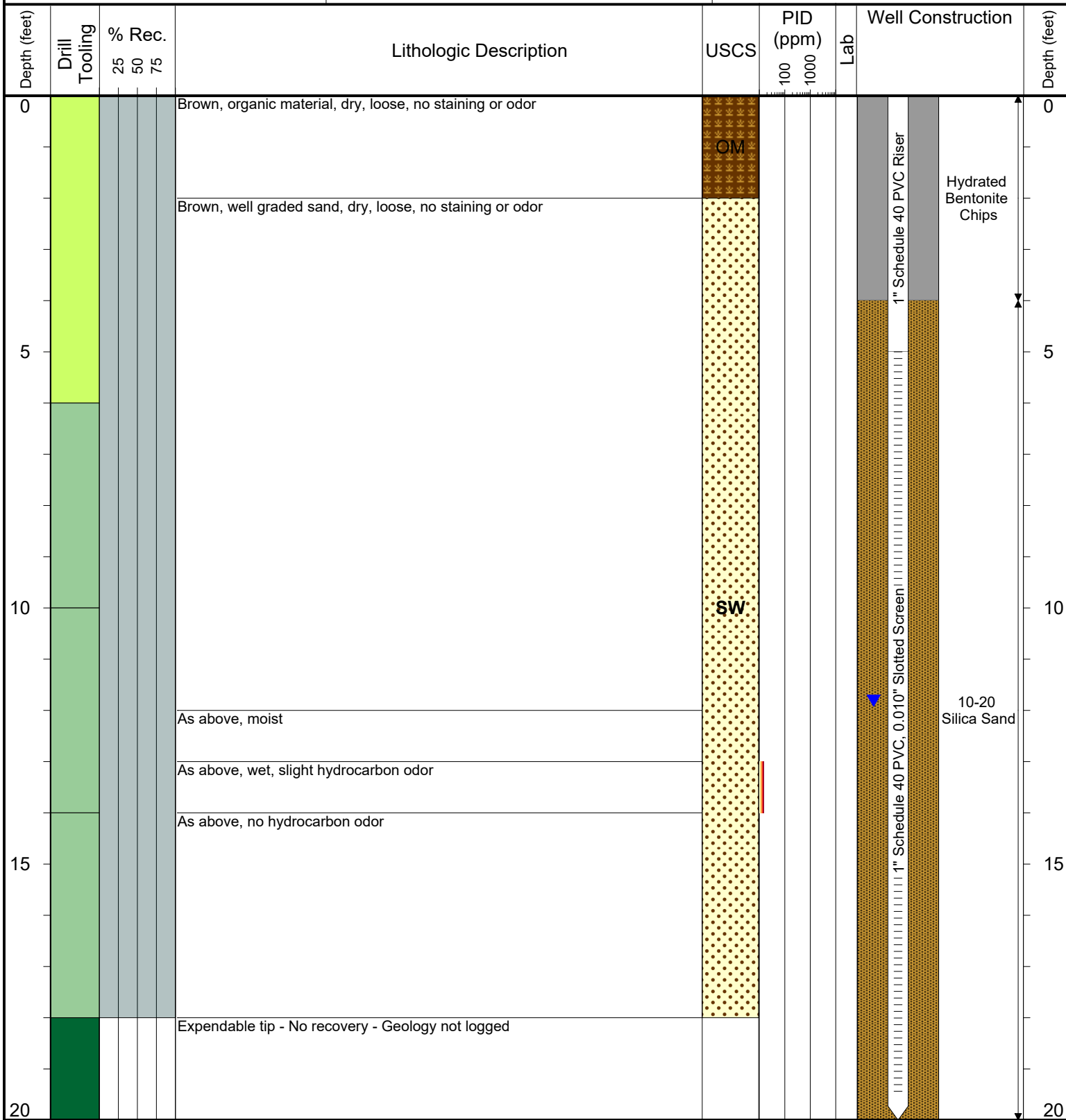
COMPLETION: Stick-up: 2.19'

NORTHING (CO STATE PLANE): 40.267880662309

EASTING (CO STATE PLANE): -104.82569633971

CASING ELEVATION (FT. AMSL): 4767.79

GROUND ELEVATION (FT. AMSL): 4765.6



Drilling / Sample Method:

- Macro-Core
- Hand Auger
- Expendable Well Tip
- Hydrovac

Laboratory Sample Types:

- Geotechnical Lab
- Analytical Chemistry Lab
- Geotechnical & Analytical Chemistry Lab