

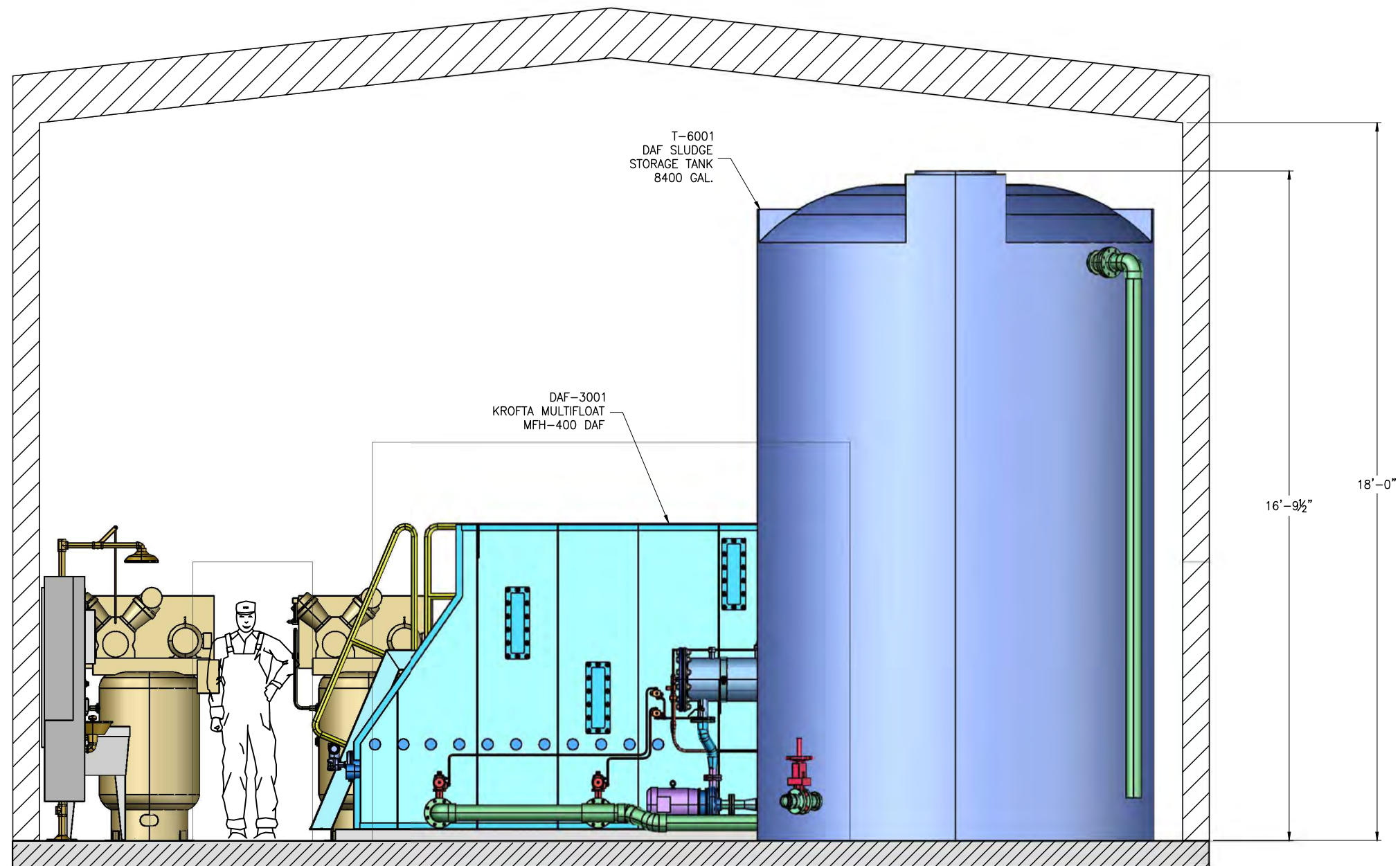
TOP VIEW

PRELIMINARY
FEB. 16, 2018

NOTE:
SEE P&ID FOR MORE INFORMATION

KROFTA <small>a Watlow company</small>		Krofta Technologies LLC PO Box 7 401 South Street Dalton MA 01227 Tel: 413.236.5634 Fax: 413.236.6917 info@krofta.com	
NAME:		KEP-18-131 - SANDRIDGE ENERGY	
DATE: 02/16/18	SCALE: -	DRAWN BY: PLN	DESIGNED BY:
TITLE:		KROFTA MULTIFLOAT MFH-400 WWTP PROPOSED GENERAL ARRANGEMENT	
DRAWING NUMBER:		18131-GA-01-1	


REV	DESCRIPTION	DWN	DATE	CHK'D	APP'D
DEPICTION OF EQUIPMENT DOES NOT CONSTITUTE SUPPLY BY KROFTA. PROPERTY OF KROFTA, DO NOT COPY OR GIVE TO OTHERS WITHOUT PERMISSION. SUBJECT TO RETURN UPON DEMAND.					

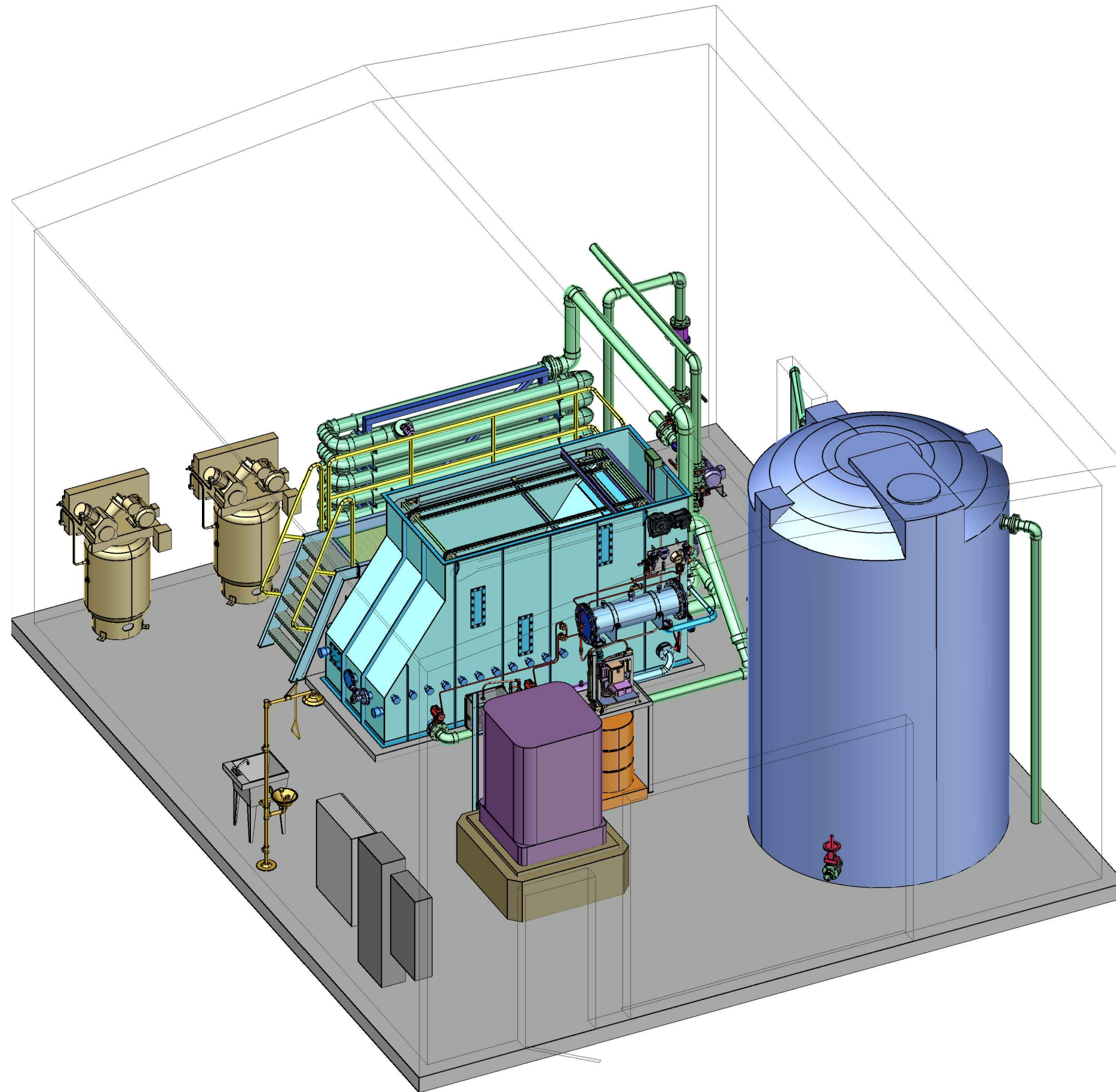


FRONT ELEVATION

PRELIMINARY
FEB. 16, 2018

REV	DESCRIPTION	DWN	DATE	CHK'D	APP'D
<small> DEPICTION OF EQUIPMENT DOES NOT CONSTITUTE SUPPLY BY KROFTA. PROPERTY OF KROFTA, DO NOT COPY OR GIVE TO OTHERS WITHOUT PERMISSION. SUBJECT TO RETURN UPON DEMAND. </small>					

 Krofta Technologies LLC P.O. Box 7 401 South Street Dalton MA 01227 Tel: 413.236.5634 Fax: 413.236.6917 info@krofta.com					
NAME: KEP-18-131 - SANDRIDGE ENERGY					
DATE: 02/16/18	SCALE: -	DRAWN BY: PLN	DESIGNED BY:	CHECKED BY:	APPROVED BY:
TITLE: KROFTA MULTIFLOAT MFH-400 WWTP PROPOSED GENERAL ARRANGEMENT				DRAWING NUMBER: 18131-GA-01-2	REV:

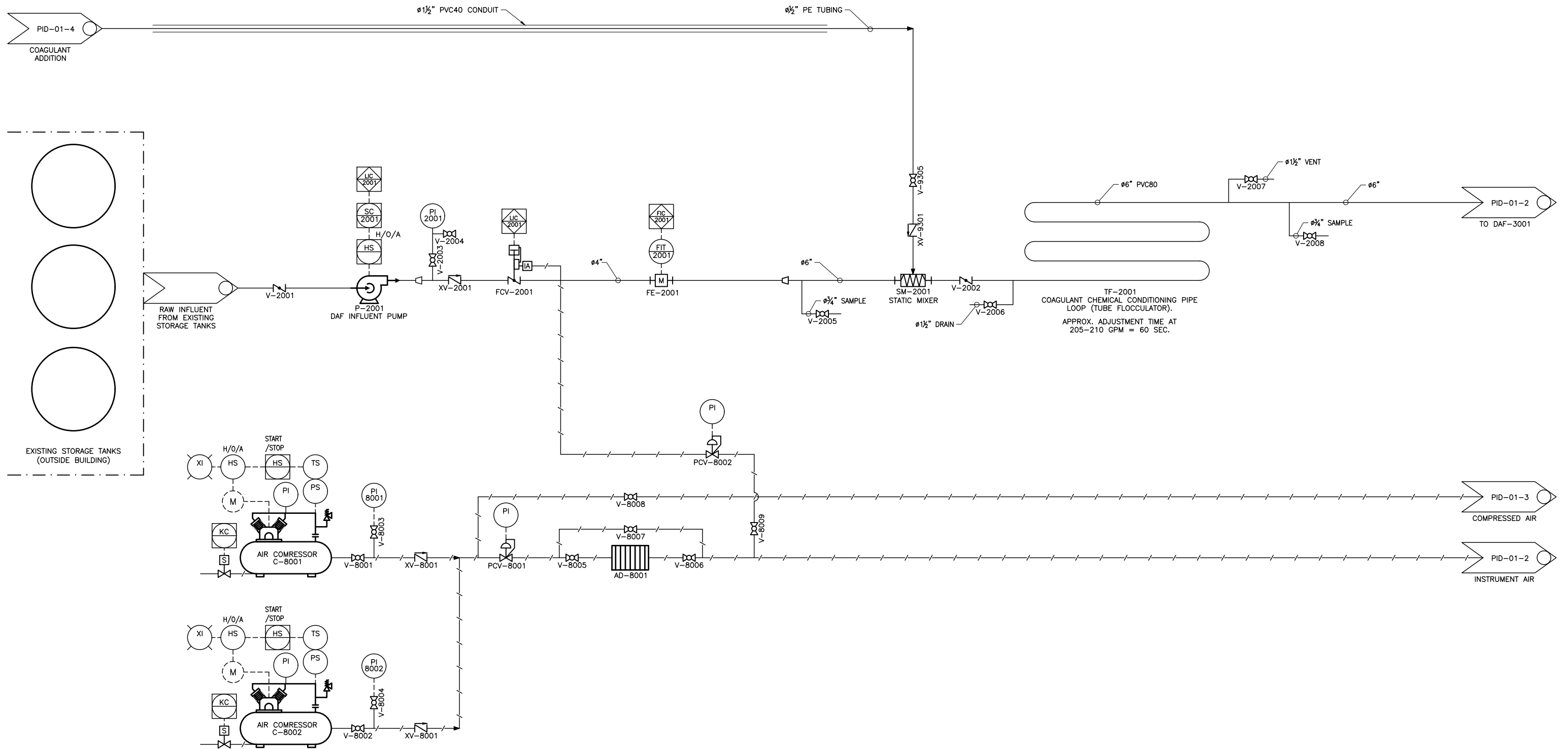


PRELIMINARY
FEB. 16, 2018

ISO-VIEW

REV	DESCRIPTION	DWN	DATE	CHK'D	APP'D
DEPICTION OF EQUIPMENT DOES NOT CONSTITUTE SUPPLY BY KROFTA. PROPERTY OF KROFTA, DO NOT COPY OR GIVE TO OTHERS WITHOUT PERMISSION. SUBJECT TO RETURN UPON DEMAND.					

KROFTA <small>a Waterville company</small>						Krofta Technologies LLC PO Box 7 401 South Street Dalton MA 01227 Tel: 413.236.5634 Fax: 413.236.6917 info@krofta.com					
NAME:						KEP-18-131 - SANDRIDGE ENERGY					
DATE:	02/16/18	SCALE:	-	DRAWN BY:	PLN	DESIGNED BY:		CHECKED BY:		APPROVED BY:	
TITLE:						KROFTA MULTIFLOAT MFH-400 WWTP PROPOSED GENERAL ARRANGEMENT					
						DRAWING NUMBER:		18131-GA-01-3			
								REV:			




H/O/A
HS
XXXX

** NOTE: HOA SWITCHES AS DEPICTED:
REFERENCE SOFTWARE PROGRAMMED BUTTONS ON HMI
SCREEN & ARE NOT EXTERNALLY MOUNTED DEVICES.

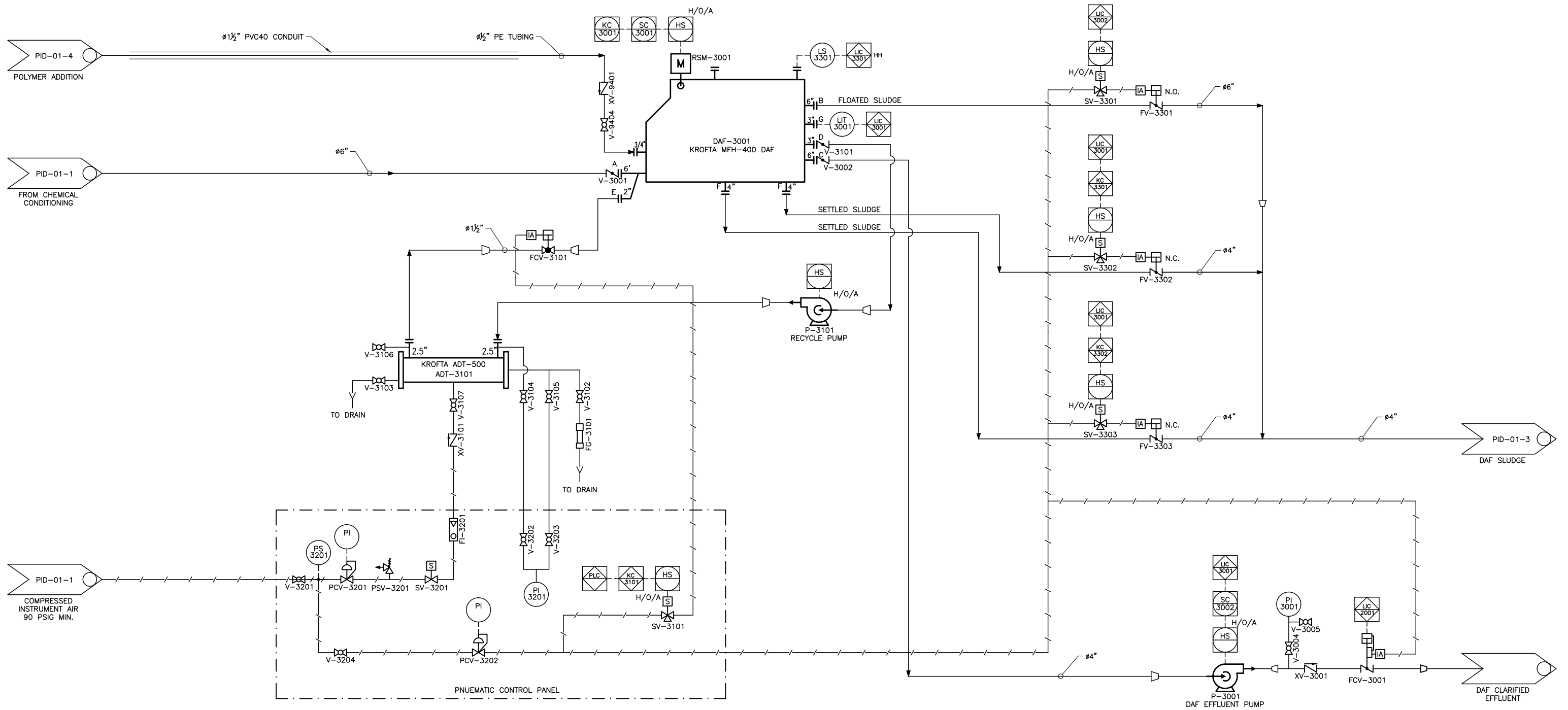
REV	DESCRIPTION	DWN	DATE	CHK'D	APP'D


DEPICTION OF EQUIPMENT DOES NOT CONSTITUTE SUPPLY BY KROFTA.
PROPERTY OF KROFTA, DO NOT COPY OR GIVE TO OTHERS WITHOUT PERMISSION. SUBJECT TO RETURN UPON DEMAND.




Krofta Technologies LLC
PO Box 7 401 South Street Dalton MA 01227
Tel: 413.236.5634 Fax: 413.236.6917 info@krofta.com

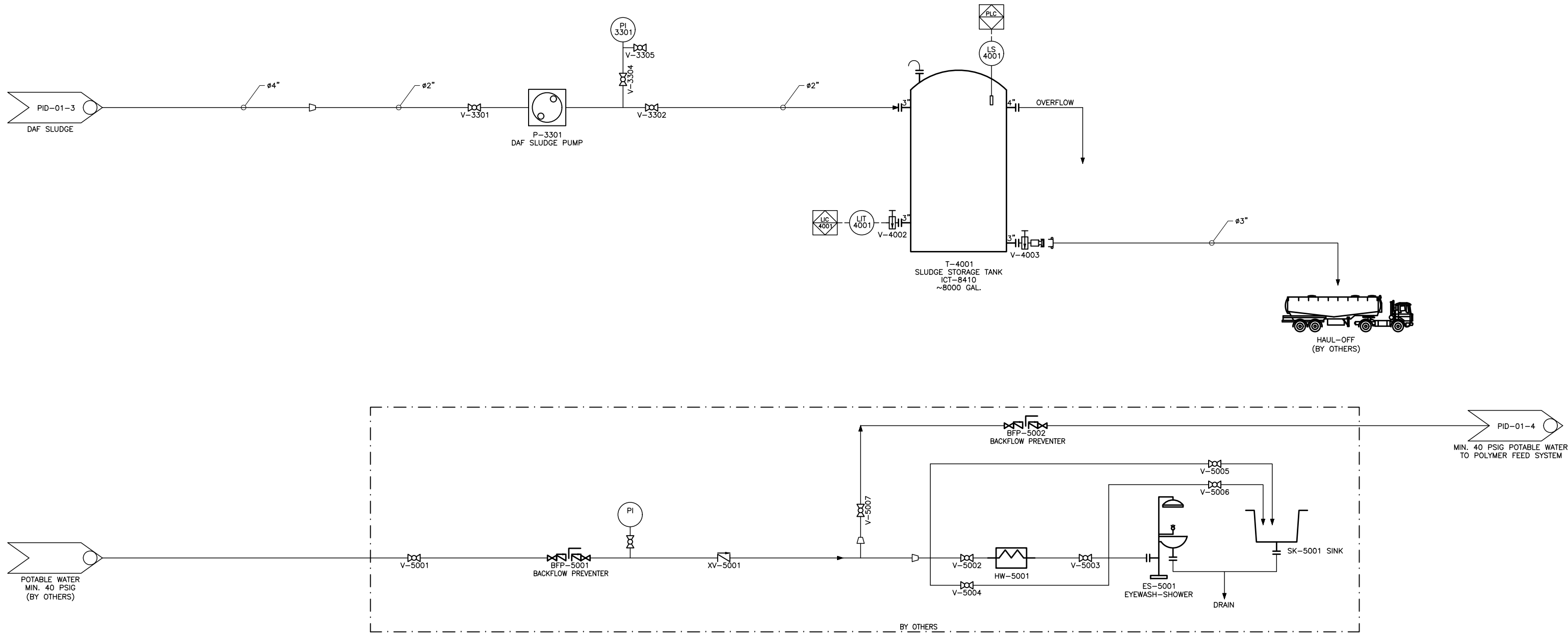
NAME: 18K-07 - SANDRIDGE ENERGY	
DATE: 05/23/18	SCALE: -
DRAWN BY: PLN	DESIGNED BY:
CHECKED BY:	APPROVED BY:
TITLE: KROFTA MFH-400 W/ADT-500 P&ID	
DRAWING NUMBER: 18K07-PID-01-1	REV:



**** NOTE: HOA SWITCHES AS DEPICTED:**

 REFERENCE SOFTWARE PROGRAMMED BUTTONS ON HMI SCREEN & ARE NOT EXTERNALLY MOUNTED DEVICES.
 PROPERTY OF KROFTA, DO NOT COPY OR GIVE TO OTHERS WITHOUT PERMISSION. SUBJECT TO RETURN UPON DEMAND.


Krofta Technologies LLC
 PO Box 7 401 South Street Dalton MA 01227
 Tel: 413.236.5634 Fax: 413.236.6917 info@krofta.com

NAME: 18K-07 - SANDRIDGE ENERGY			
DATE: 05/23/18	SCALE: -	DRAWN BY: PLN	DESIGNED BY:
TITLE: KROFTA MFH-400 W/ADT-500 P&ID		DRAWING NUMBER: 18K07-PID-01-2	REV:




HS
XXXX

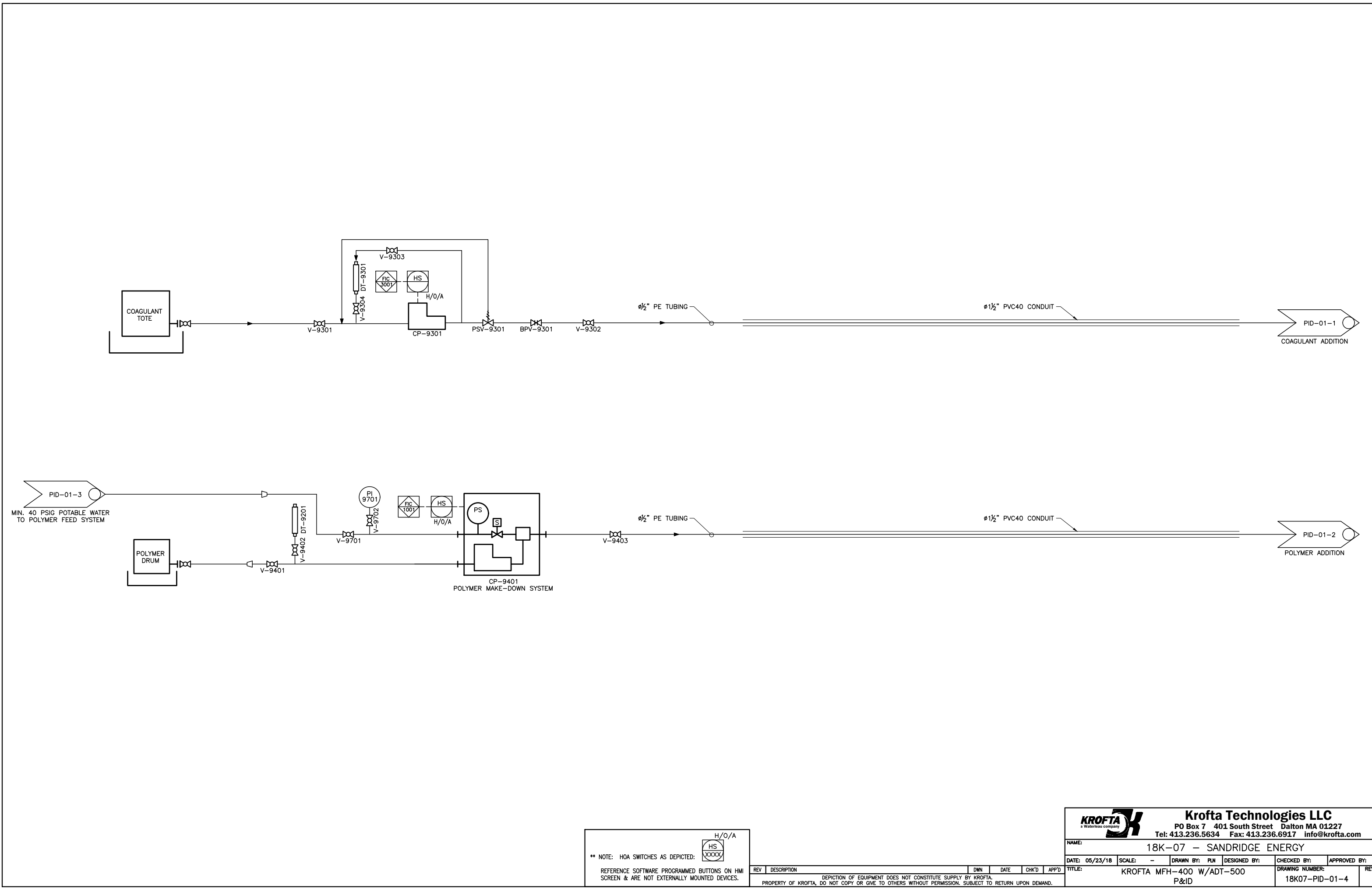
H/O/A

** NOTE: HOA SWITCHES AS DEPICTED:

REFERENCE SOFTWARE PROGRAMMED BUTTONS ON HMI SCREEN & ARE NOT EXTERNALLY MOUNTED DEVICES.

REV	DESCRIPTION	DWN	DATE	CHK'D	APP'D
DEPICTION OF EQUIPMENT DOES NOT CONSTITUTE SUPPLY BY KROFTA. PROPERTY OF KROFTA, DO NOT COPY OR GIVE TO OTHERS WITHOUT PERMISSION. SUBJECT TO RETURN UPON DEMAND.					

 Krofta Technologies LLC PO Box 7 401 South Street Dalton MA 01227 Tel: 413.236.5634 Fax: 413.236.6917 info@krofta.com		
NAME: 18K-07 – SANDRIDGE ENERGY		
DATE: 05/23/18	SCALE: –	DRAWN BY: PLN DESIGNED BY: CHECKED BY: APPROVED BY:
TITLE: KROFTA MFH-400 W/ADT-500 P&ID		DRAWING NUMBER: 18K07-PID-01-3 REV:



**** NOTE:** HOA SWITCHES AS DEPICTED:

REFERENCE SOFTWARE PROGRAMMED BUTTONS ON HMI SCREEN & ARE NOT EXTERNALLY MOUNTED DEVICES.

PROPERTY OF KROFTA, DO NOT COPY OR GIVE TO OTHERS WITHOUT PERMISSION. SUBJECT TO RETURN UPON DEMAND.



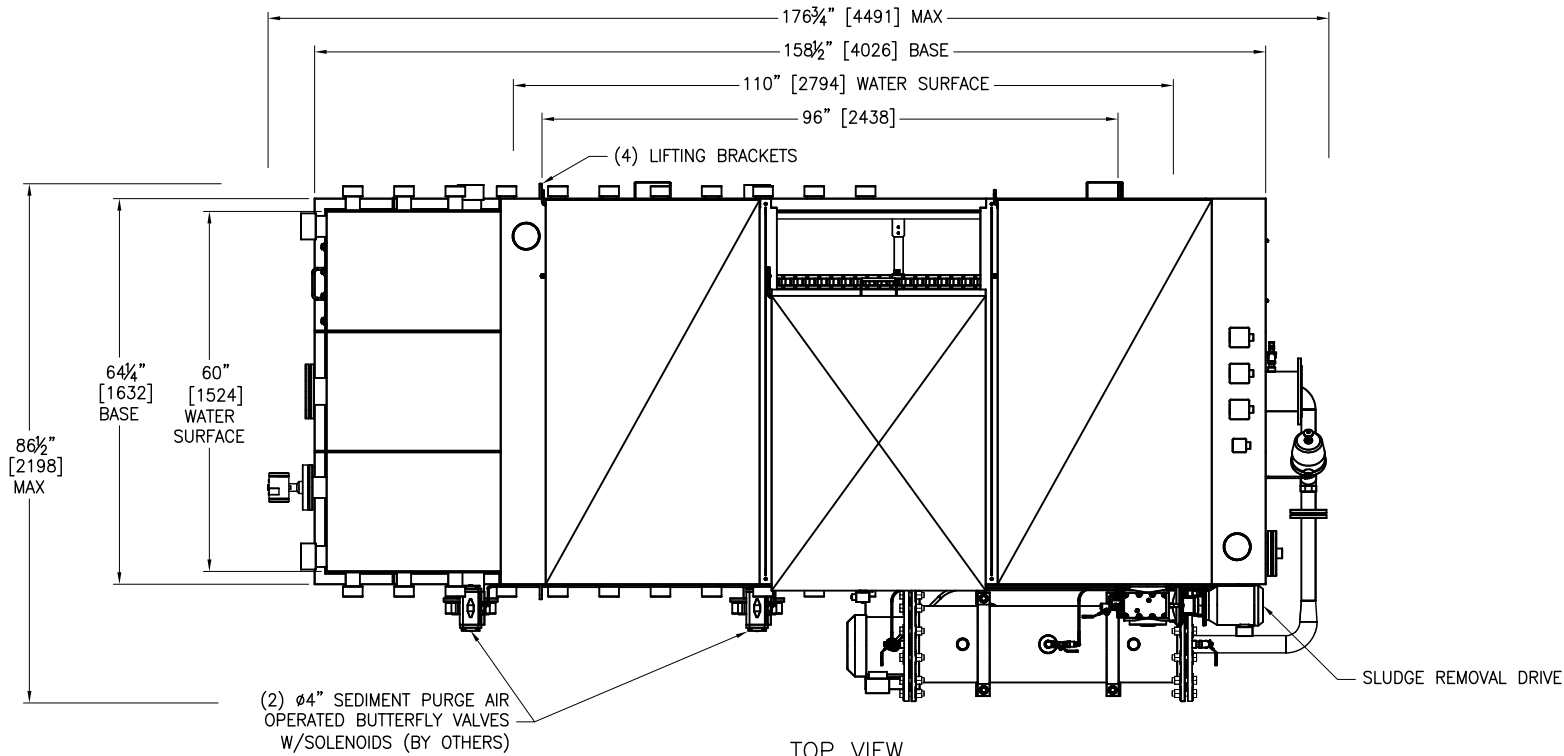
REV	DESCRIPTION	DWN	DATE	CHK'D	APP'D

Krofta Technologies LLC
PO Box 7 401 South Street Dalton MA 01227
Tel: 413.236.5634 Fax: 413.236.6917 info@krofta.com

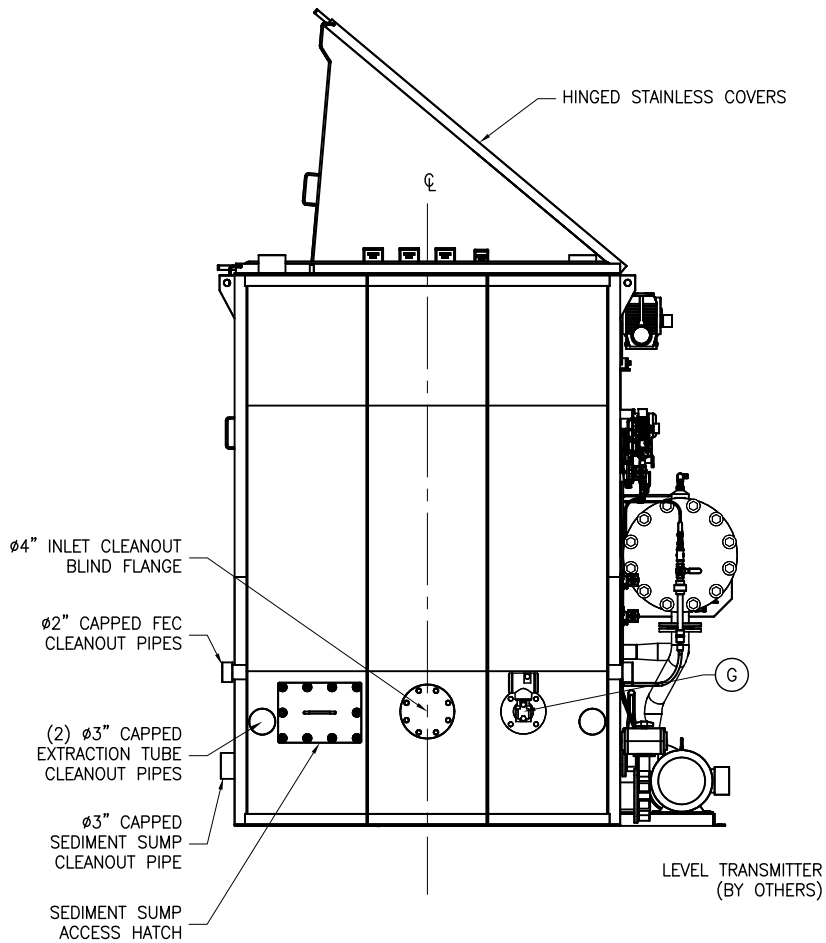
NAME: 18K-07 - SANDRIDGE ENERGY					
DATE: 05/23/18	SCALE: -	DRAWN BY: PLN	DESIGNED BY:	CHECKED BY:	APPROVED BY:
TITLE: KROFTA MFH-400 W/ADT-500 P&ID				DRAWING NUMBER: 18K07-PID-01-4	REV:

ITEM	DESCRIPTION	CONNECTION
A	UNCLARIFIED WATER INLET	6" - *FLANGE
B	FLOATED SLUDGE OUTLET	6" - *FLANGE
C	CLARIFIED WATER OUTLET	6" - *FLANGE
D	CLARIFIED RECYCLE OUTLET	3" - *FLANGE
E	PRESSURIZED WATER INLET	2" - *FLANGE
F	SEDIMENT PURGE OUTLET (2)	4" - *FLANGE
G	LEVEL SENSOR CONNECTION	3" - *FLANGE
H	ADT BLEEDOFF CONNECTION	½" - FNPT
J	CHEMICAL CONNECTION	¾" - MNPT
K	CLEARWELL TAP	1" - FNPT

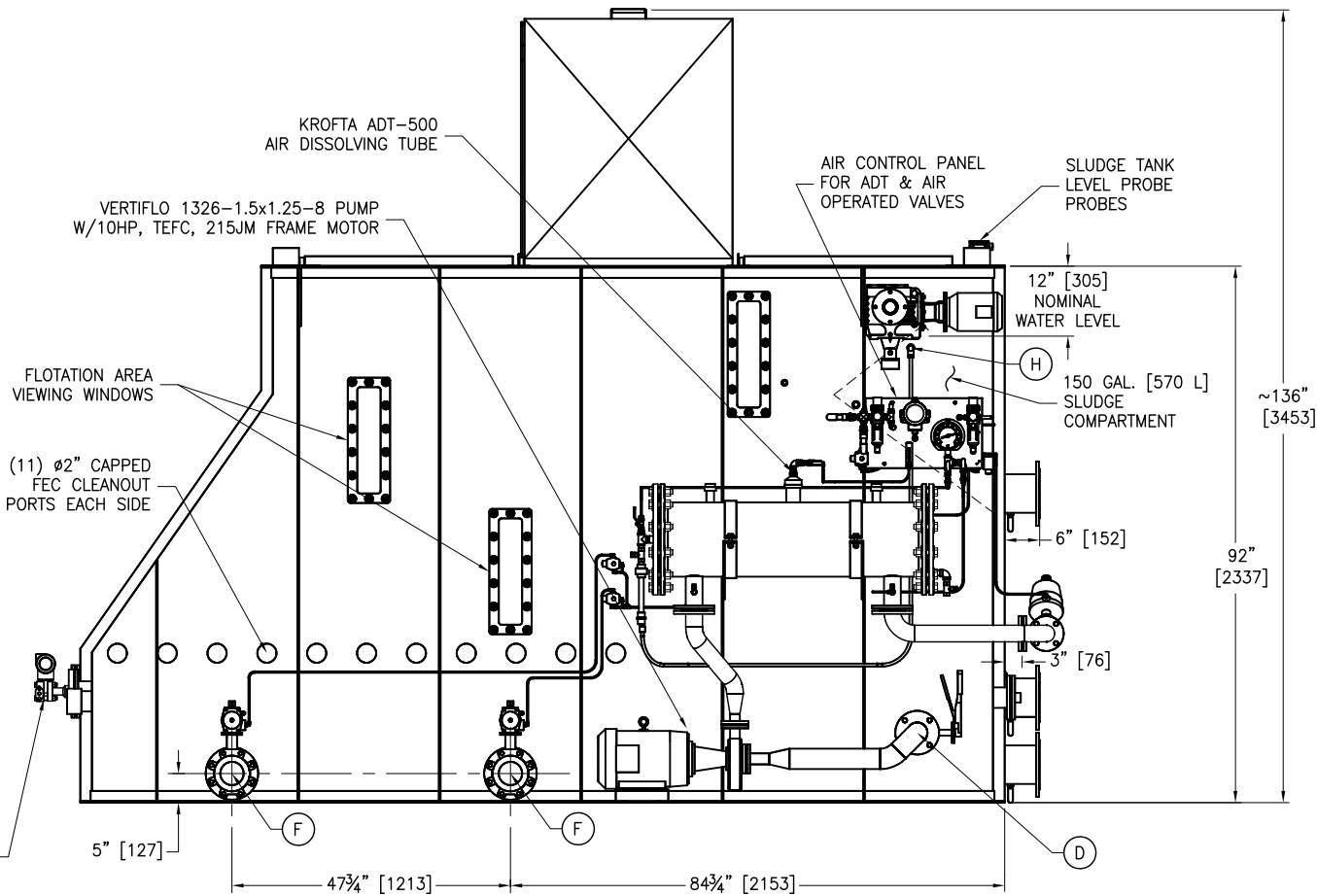
*150 LB. FLANGE DRILLING DIMENSIONS



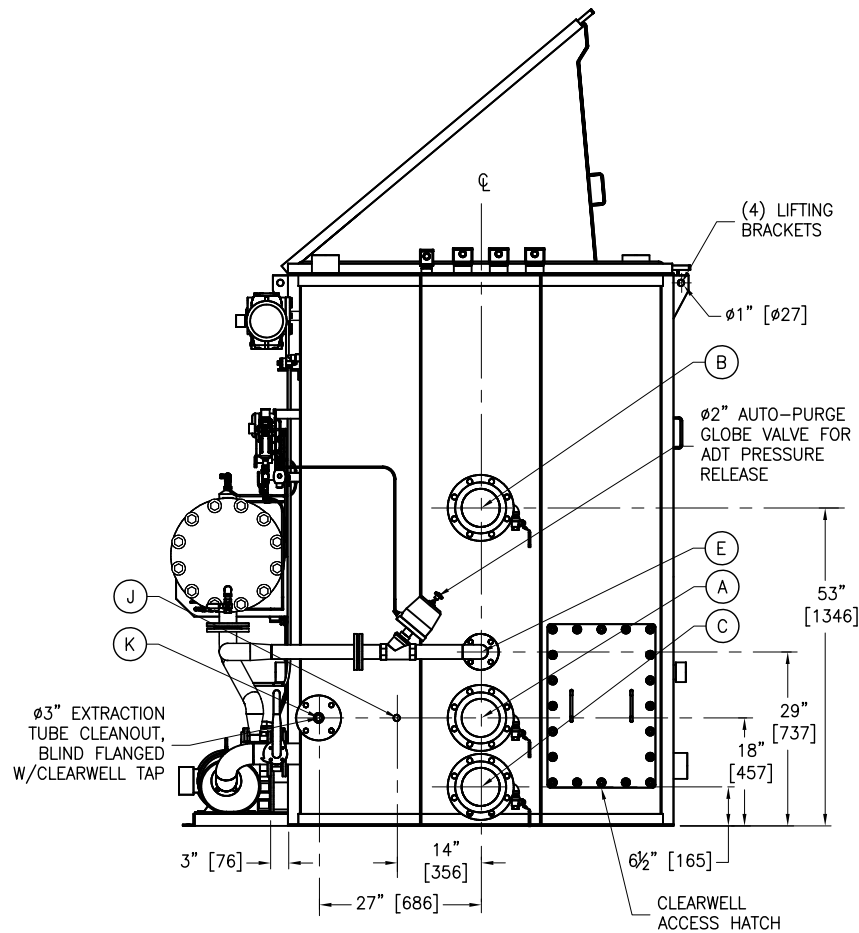
TOP VIEW



FRONT VIEW



SIDE VIEW



BACK VIEW

TOTAL EQUIPMENT AND WATER WEIGHTS:
EMPTY 6,000 LBS (2730 KG)
FLOODED: 31,000 LBS (14100 KG)

MFH-400 FABRICATION MATERIALS:
WETTED TANK WALLS & PIPING: 316LSS.
NON-WETTED STRUCTURE & BRACKETS INCLUDES TANK RIM, SUPPORT RIBS, FLOOR SUPPORT GRID, DAF COVERS, ACCESS PLATFORM, STAIRS: 304LSS.
ANGLE FACE RINGS: 316LSS.
BACKUP FLANGES: GALV. MILD STEEL.
BLIND FLANGES IN PAINTED MILD STEEL WITH 316LSS CLADDING.
SCRAPER BLADES: BUNA.
BEARINGS: UHMWP.
SPROCKETS: NYLON.
CHAIN: ACETAL.

ADT-500 MATERIALS OF CONSTRUCTION:
ADT & PIPING: 316LSS.
BACK-UP FLANGES: GALV. STEEL.
BLIND FLANGES: PAINTED MILD STEEL W/316LSS INTERNAL CLADDING.
SUPPORT BRACKETS: 304LSS
FASTENERS: ZINC PLATED.

DIMENSIONAL STANDARDS:
ALL EQUIPMENT SUPPLIED IS TO IMPERIAL STANDARDS, PIPE FLANGES HAVE ANSI 150 LB. DRILLING, PIPES HAVE NPT THREADS, HARDWARE IS TO INCH STANDARDS.

ISSUED FOR CONSTRUCTION

AUG 20, 2018

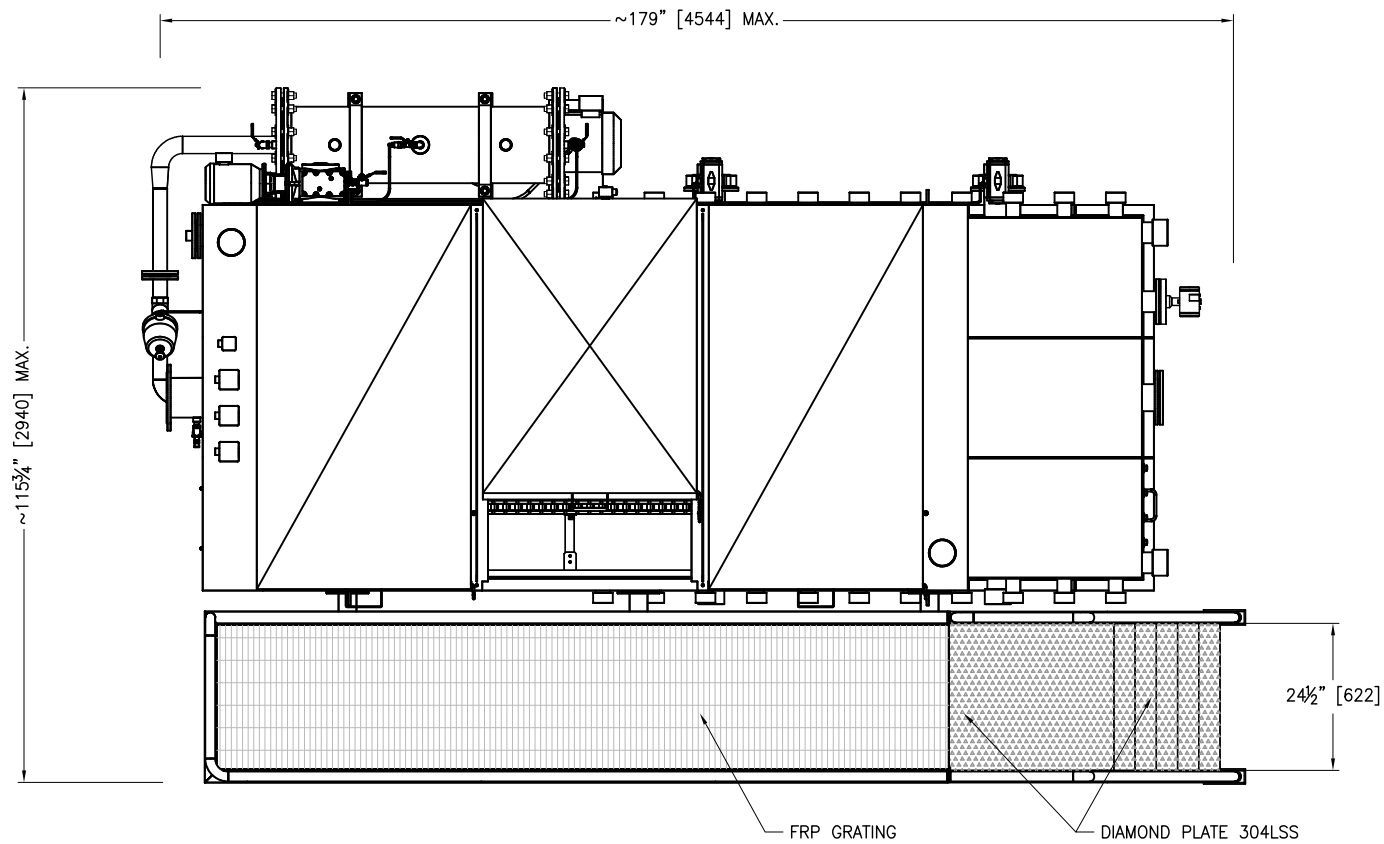
REV	DESCRIPTION	DWN	DATE	CHK'D	APP'D
	DEPICTION OF EQUIPMENT DOES NOT CONSTITUTE SUPPLY BY KROFTA. PROPERTY OF KROFTA, DO NOT COPY OR GIVE TO OTHERS WITHOUT PERMISSION. SUBJECT TO RETURN UPON DEMAND.				



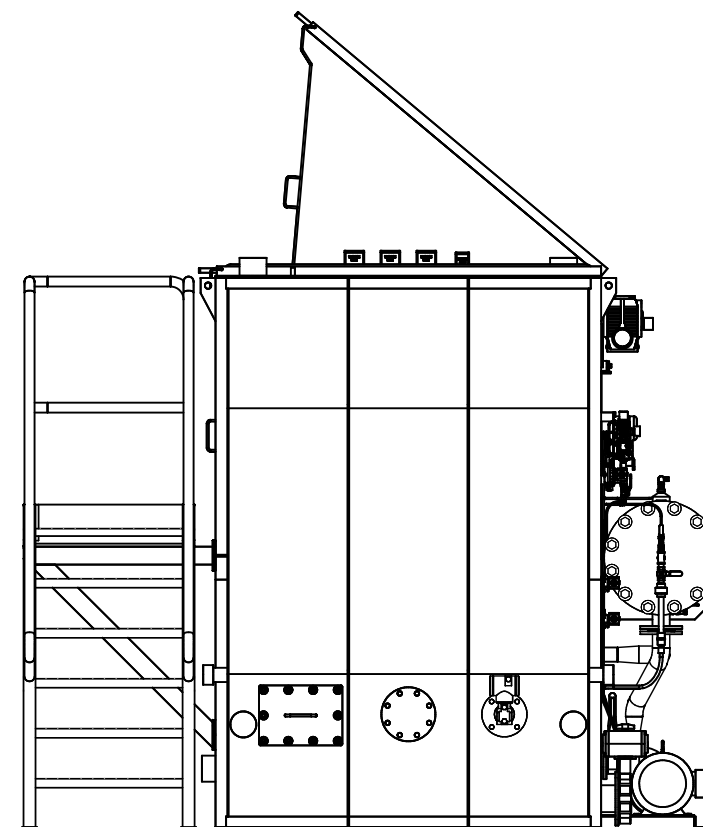
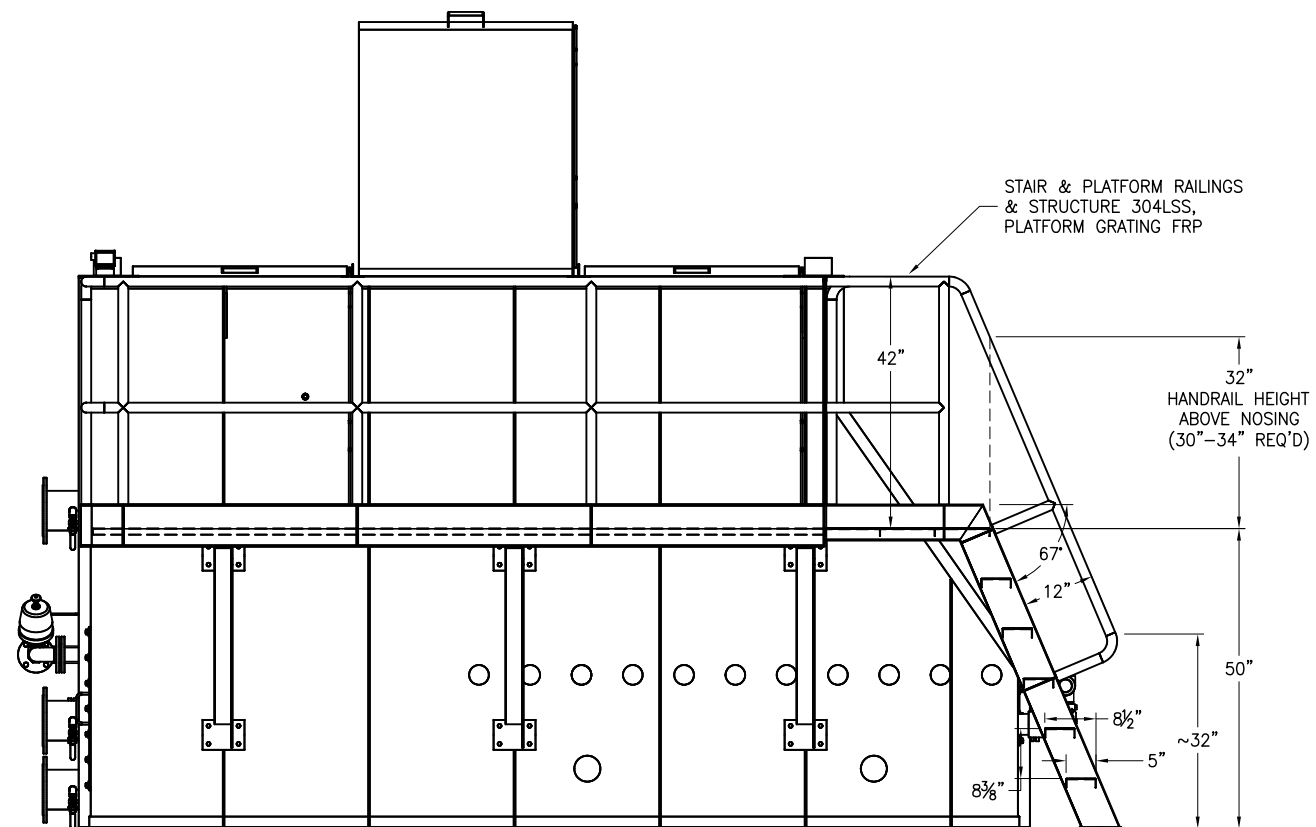
Krofta Technologies LLC

PO Box 7 401 South Street Dalton MA 01227
Tel: 413.236.5634 Fax: 413.236.6917 info@krofta.com

NAME:							JOB 18-K07 - SANDRIDGE ENERGY										
DATE: 05/09/18			SCALE: -		DRAWN BY: PLN		DESIGNED BY:		CHECKED BY:		APPROVED BY:						
TITLE:							KROFTA MULTIFLOAT MFH-400 WWTP							DRAWING NUMBER:		REV:	
							MFH-400 DAF UNIT CONFIGURATION							18K07-MFH400-DUC-01-1			



TOP VIEW



NOTE:
COMPLIES WITH IBC 1009.11
AND OSHA 1910.25 CODES
FOR SHIP LADDERS.

ISSUED FOR CONSTRUCTION
AUG 20, 2018

KROFTA a Waterless company		Krofta Technologies LLC PO Box 7 401 South Street Dalton MA 01227 Tel: 413.236.5634 Fax: 413.236.6917 info@krofta.com	
NAME:		JOB 18-K07 - SANDRIDGE ENERGY	
DATE: 05/09/18	SCALE: -	DRAWN BY: PLN	DESIGNED BY:
TITL:		DRAWING NUMBER:	
KROFTA MULTIFLOAT MFH-400 WWTP MFH-400 DAF UNIT CONFIGURATION		18K07-MFH400-DUC-01-2	
REV:	DESCRIPTION	OWN	DATE
REV:	DESCRIPTION	CHK'D	APPR'D
DEPICTION OF EQUIPMENT DOES NOT CONSTITUTE SUPPLY BY KROFTA. PROPERTY OF KROFTA, DO NOT COPY OR GIVE TO OTHERS WITHOUT PERMISSION. SUBJECT TO RETURN UPON DEMAND.			