

EOG RESOURCES, INC.

T7N, R80W, 6th P.M.

1939 Brass Cap 0.2'
Underground Steel
Post, N-W Road
And Fence
Lat: 40.541114
Long: 106.388150

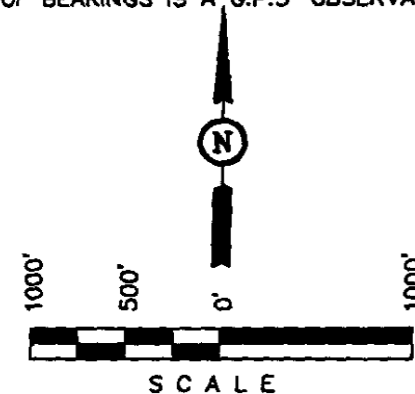
Well location, VANETA #01-32, located as shown in the NE 1/4 NE 1/4 of Section 32, T7N, R80W, 6th P.M., Jackson County, Colorado.

BASIS OF ELEVATION

SPOT ELEVATION AT THE SOUTHEAST CORNER OF SECTION 29, T7N, R80W, 6th P.M., TAKEN FROM THE COALMONT QUADRANGLE, COLORADO, JACKSON COUNTY 7.5 MINUTE QUAD. (TOPOGRAPHIC MAP) PUBLISHED BY THE UNITED STATES DEPARTMENT OF THE INTERIOR, GEOLOGICAL SURVEY. SAID ELEVATION IS MARKED AS BEING 8156 FEET

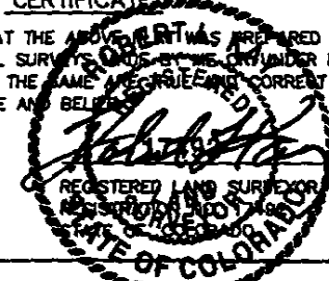
BASIS OF BEARINGS

BASIS OF BEARINGS IS A G.P.S. OBSERVATION.



CERTIFICATE

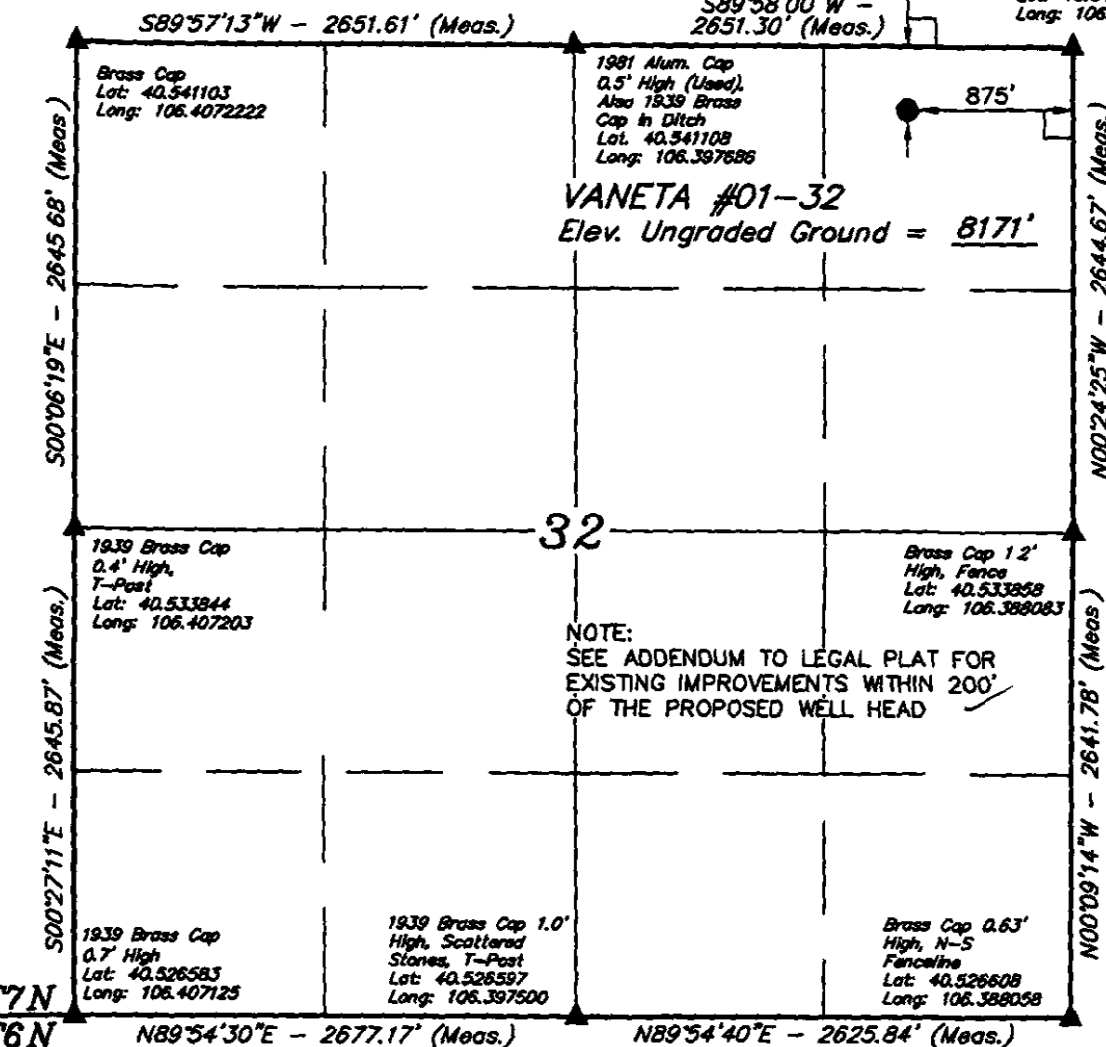
THIS IS TO CERTIFY THAT THE ABOVE PLAT WAS PREPARED FROM FIELD NOTES OF ACTUAL SURVEY MADE BY ME OR UNDER MY SUPERVISION AND THAT THE SAME ARE TRUE AND CORRECT TO THE BEST OF MY KNOWLEDGE AND BELIEF.



REVISED: 02-20-08 C.C.

UINTAH ENGINEERING & LAND SURVEYING
85 SOUTH 200 EAST - VERNAL, UTAH 840
(435) 789-1017

SCALE 1" = 1000'	DATE SURVEYED. 12-19-07	DATE DRA 12-2
PARTY A.F. B.A. C.P.	REFERENCES G.L.O. PLAT	
WEATHER COLD	FILE EOG RESOURCES, INC.	



LEGEND:

- └ = 90° SYMBOL
● = PROPOSED WELL HEAD.
▲ = SECTION CORNERS LOCATED.

(NAD 83)
LATITUDE = 40°32'24.59" (40.540164)
LONGITUDE = 106°23'28.64" (106.391289)
(NAD 27)
LATITUDE = 40°32'24.66" (40.540183)
LONGITUDE = 106°23'26.53" (106.390703)

PDOP = 1.5