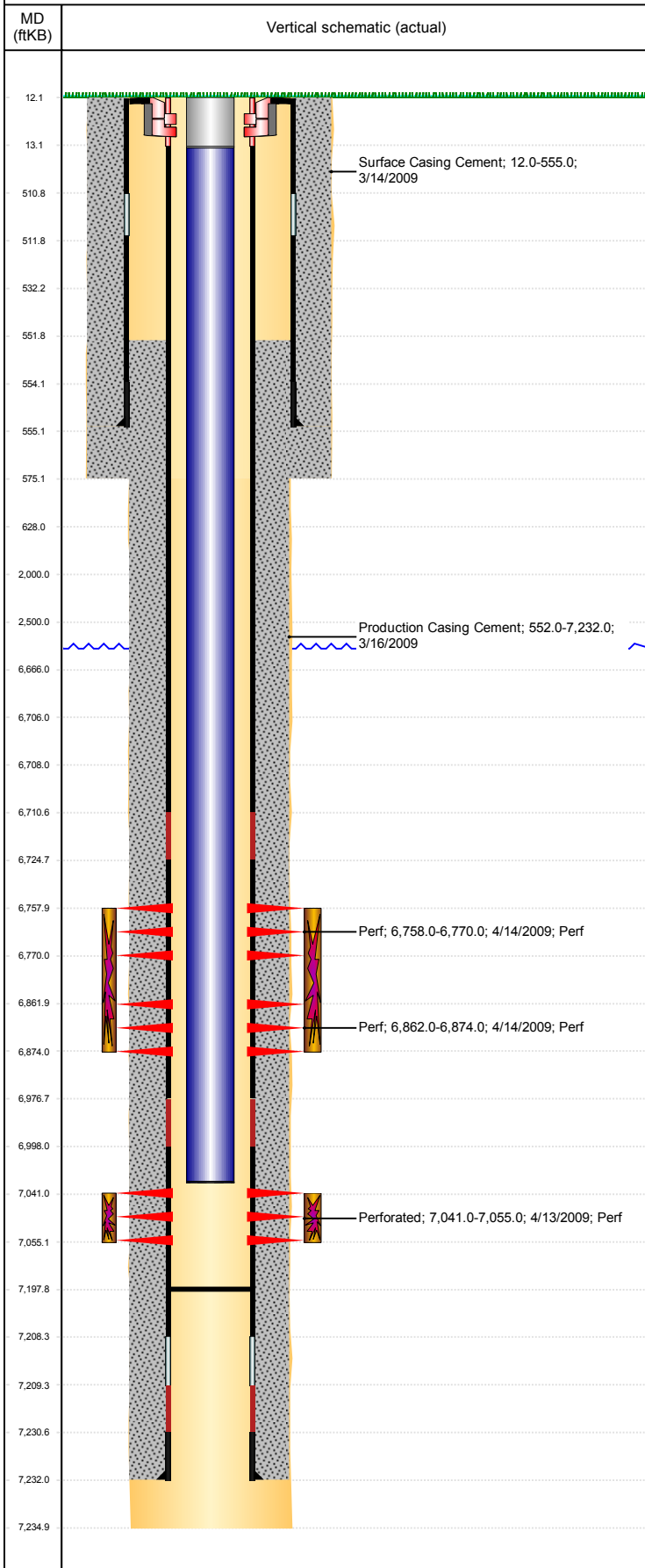


**Well Name: THISTLE DOWN B31-21**

VERTICAL, ORIGINAL HOLE, 3/7/2019 4:29:01 PM



## Well Header

API 05-123-29501	Business Unit DJ BASIN	District 15	Well Config VERTICAL
KB - GL / MSL (ft... 12.00	Spud Date 3/13/2009	P & A Date	Well Production Status SI
SoRT No			

Comment

318A.e. LOCATION!!

## Surface Location (Congressional)

Qtr 3 SE	Qtr 4 NW	Section 31	Twnshp... 5	Twnsh... N	Range 64	Rng E... W	Actual Latitude (") 40.35614982	Actual Longitude (") -104.59272030
-------------	-------------	---------------	----------------	---------------	-------------	---------------	------------------------------------	---------------------------------------

## Wellbore Sections

Section Des	Size (in)	Act Top, MD (ftKB)	Act Btm, MD (ftKB)
SURFACE	12 1/4	12	575
PRODUCTION	7 7/8	575	7,235

## Casing Strings

Csg Des	Run Date	OD (in)	Wt/Len (lb/ft)	Grade	Top, MD (ftKB)	MD (ftKB)
Surface	3/14/2009	8 5/8	24.00	J-55	12.1	555.0
Production	3/16/2009	4 1/2	11.60	M-80	12.1	7,232.0

## Cement

Des	Start Date	Top (ftKB)	Btm (ftKB)
Surface Casing Cement	3/14/2009	12.0	555.0
Production Casing Cement	3/16/2009	552.0	7,232.0

## Zone Statuses

Zone Name	Status Date	Status	Fluid Type	Job	Prod Method
CODELL	4/16/2009	PR		DRILLING/COMPLETION - ORIGINAL, 3/13/2009...	
NIOBRARA	4/16/2009	PR		DRILLING/COMPLETION - ORIGINAL, 3/13/2009...	

## Perforation Data

Linked Zone	Bnch/Stg	Entered Shot Total	Top (ftKB)	Btm (ftKB)	Date
NIOBRARA, ORIGINAL HOLE	A	24	6,758.00	6,770.00	4/14/2009
NIOBRARA, ORIGINAL HOLE	B	24	6,862.00	6,874.00	4/14/2009
CODELL, ORIGINAL HOLE		56	7,041.00	7,055.00	4/13/2009

## Stimulation Intervals

Zone	Start Date	Top (ftKB)	Btm (ftKB)
NIOBRARA, ORIGINAL HOLE	4/14/2009	6,758.0	6,874.0
CODELL, ORIGINAL HOLE	4/14/2009	7,041.0	7,055.0

## Other In Hole

Run Date	Des	OD (in)	Top (ftKB)	Btm (ftKB)

## Logs

Date	Type	Top, MD (ftKB)	Btm, MD (ftKB)
3/16/2009	Caliper/comp. Density/Neutron/GR/SP/ML	2,650.0	7,243.0
3/16/2009	DIL/GR/SP/Caliper	555.0	7,243.0
4/8/2009	CBL/CCL/GR/VDL	450.0	7,185.0
6/10/2016	GYRO	0.0	6,950.0

## Plug Back Total Depths

Date	Type	Com	Depth (ftKB)
3/16/2009	FLOAT COLLAR		7,208.0
7/15/2009	PLUG REMNANTS		7,197.9