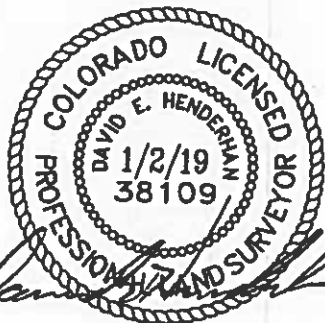
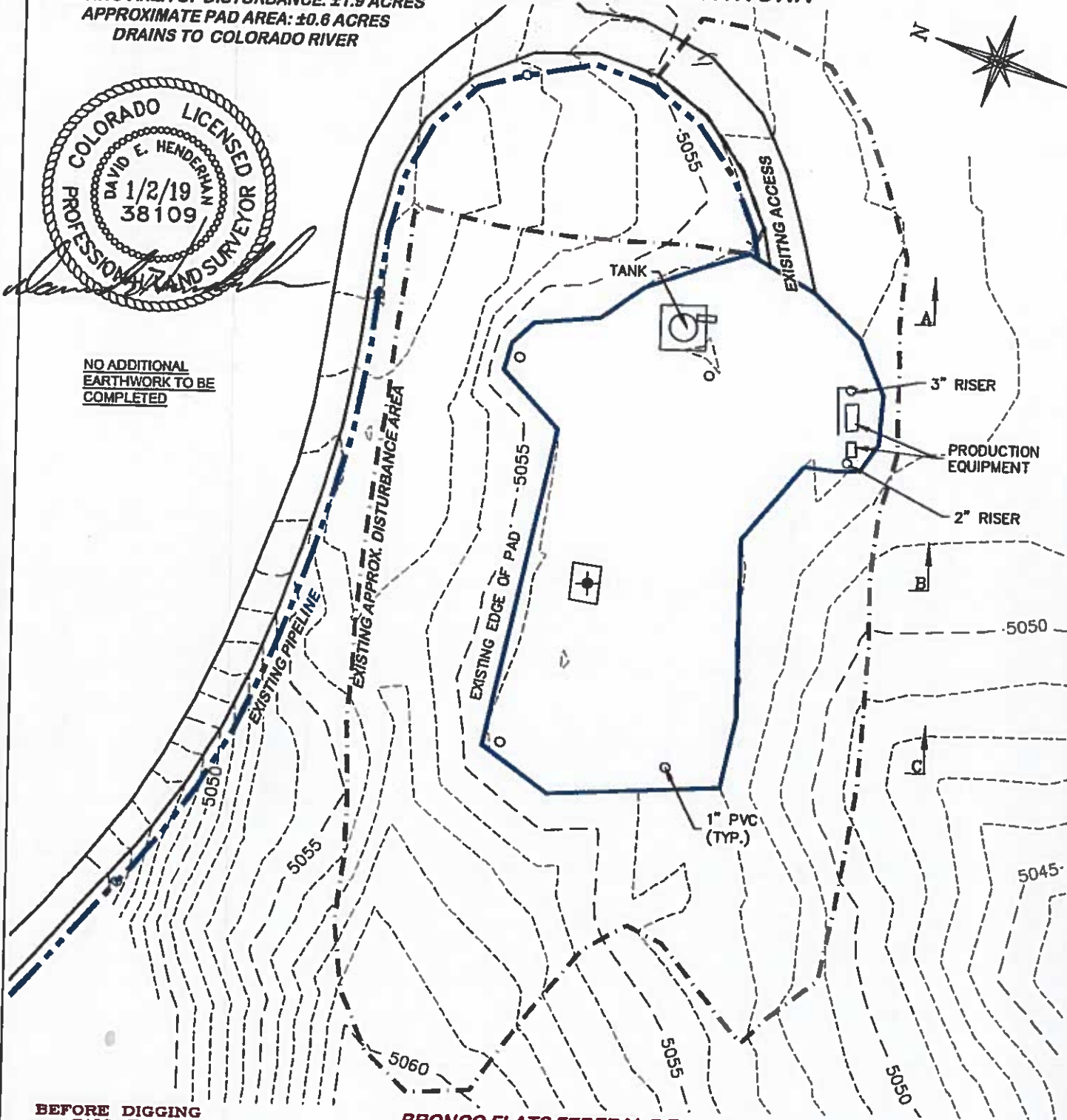


AS-BUILT ELEVATION: 5053.3'
 EXISTING AREA OF DISTURBANCE: ±1.9 ACRES
 APPROXIMATE PAD AREA: ±0.6 ACRES
 DRAINS TO COLORADO RIVER

ESTIMATED EARTHWORK

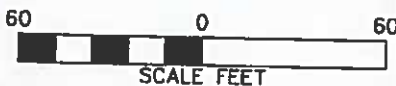


NO ADDITIONAL
 EARTHWORK TO BE
 COMPLETED



**BEFORE DIGGING
 CALL FOR
 UTILITY LINE LOCATION**

NOTE: THE EARTH QUANTITIES ON
 THIS DRAWING ARE ESTIMATED AND
 THE USE OF SAID QUANTITIES IS AT
 THE RESPONSIBILITY OF THE USER.



BRONCO FLATS FEDERAL 7-7

CONSTRUCTION LAYOUT DRAWING 1 OF 5

LARAMIE ENERGY, LLC.
BRONCO FLATS FEDERAL 7-7
 SWNE, SECTION 7, T. 9 S., R. 97 W, 6th P.M.,
 MESA COUNTY, COLORADO

ESTIMATED EARTHWORK

ITEM	CUT	FILL	TOPSOIL	EXCESS
PAD	EXISTING	EXISTING	EXISTING	EXISTING
PIT	NONE			NONE
TOTALS	EXISTING	EXISTING	EXISTING	EXISTING



DRIFFIN & ASSOCIATES, INC.
 1414 ELK ST., ROCK SPRINGS, WY 82901

(307) 362-5028

DRAWN: 12/7/2018 - TCM

SCALE: 1" = 60'

REVISED: 1/2/2019 - TCM

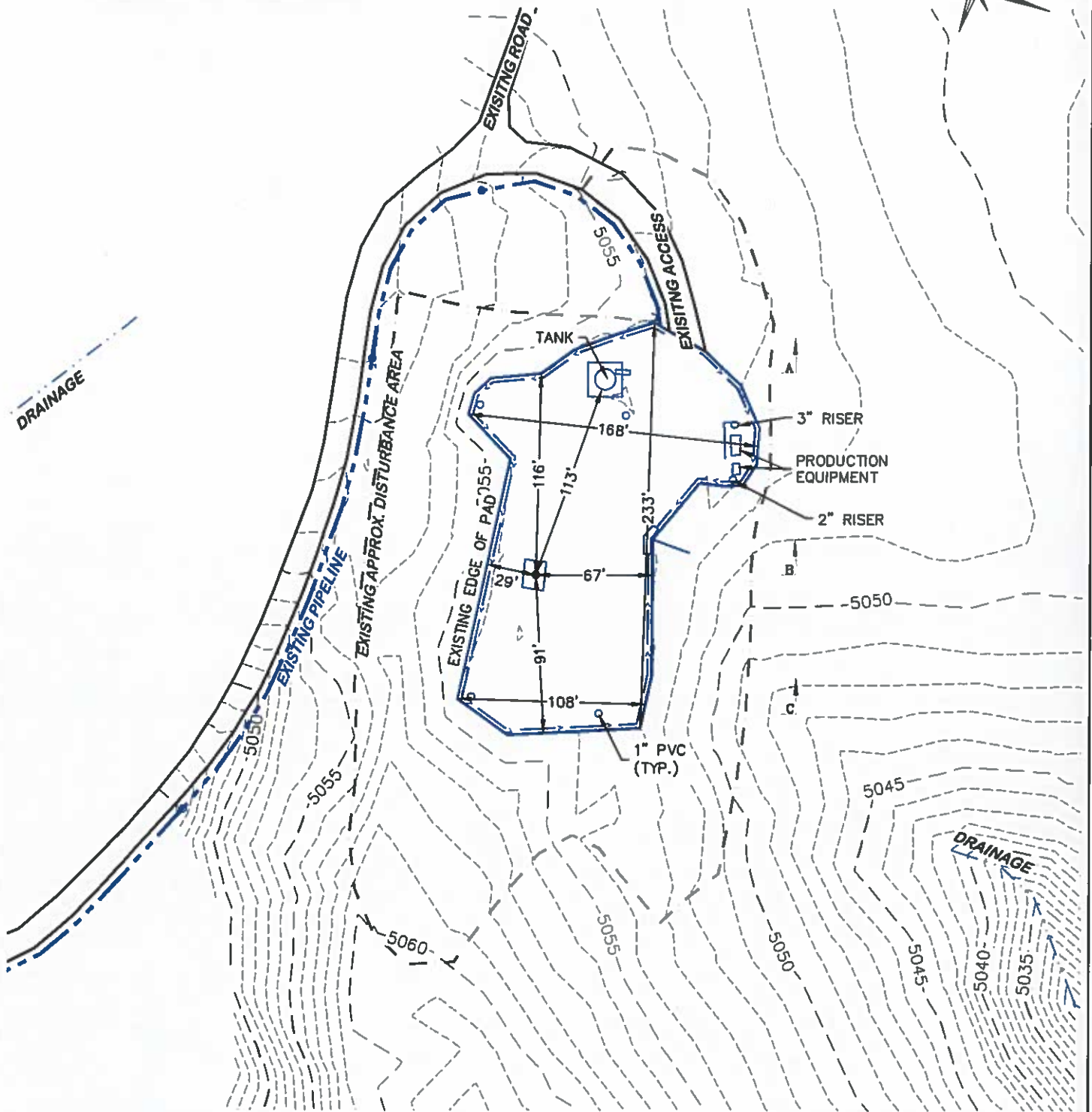
DRG JOB No. 21891

MISC. REVISIONS

01B ETHWRK

AS-BUILT ELEVATION: 5053.3'
 EXISTING AREA OF DISTURBANCE: ±1.9 ACRES
 APPROXIMATE PAD AREA: ±0.6 ACRES
 DRAINS TO COLORADO RIVER

AS-BUILT PAD



**BEFORE DIGGING
CALL FOR
UTILITY LINE LOCATION**

BRONCO FLATS FEDERAL 7-7



DRG RIFFIN & ASSOCIATES, INC.
 (307) 362-5028 1414 ELK ST., ROCK SPRINGS, WY 82901

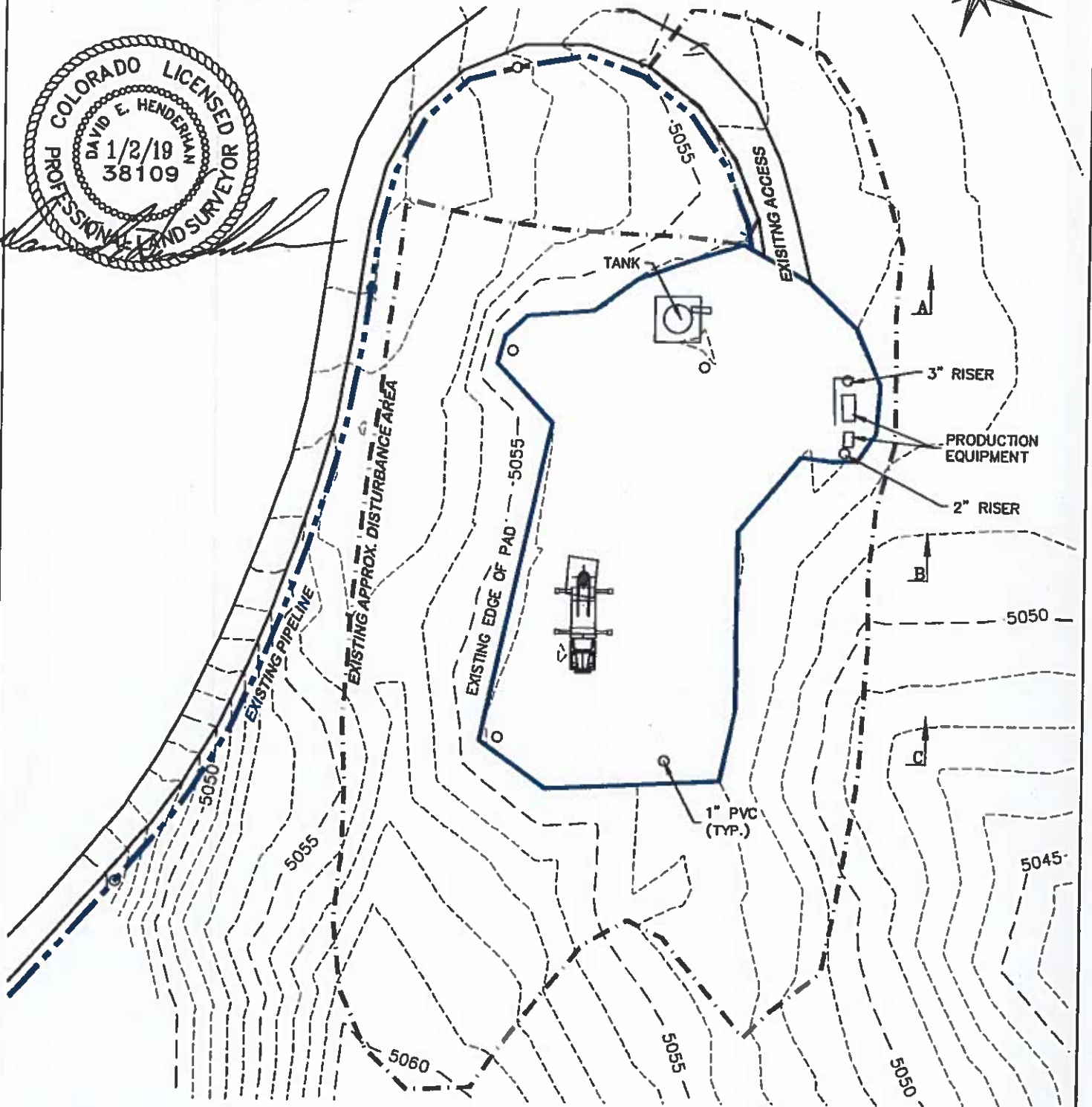
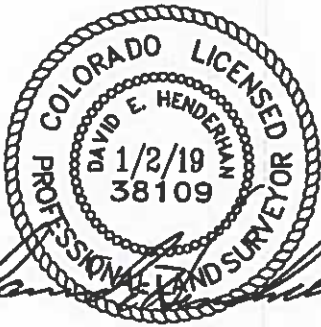
DRAWN: 12/7/2018 - TCM	SCALE: 1" = 80'
REVISED: N/A -	DRG JOB No. 21691
	01 AS-BUILT PAD

AS-BUILT PAD DRAWING 2 OF 5

**AS-BUILT PAD
 LARAMIE ENERGY, LLC.
 BRONCO FLATS FEDERAL 7-7
 SWNE, SECTION 7, T. 9 S., R. 97 W, 6th P.M.,
 MESA COUNTY, COLORADO**

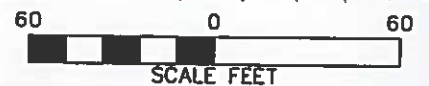
AS-BUILT ELEVATION: 5053.3'
 EXISTING AREA OF DISTURBANCE: ±1.9 ACRES
 APPROXIMATE PAD AREA: ±0.6 ACRES
 DRAINS TO COLORADO RIVER

RIG LAYOUT



BEFORE DIGGING
 CALL FOR
 UTILITY LINE LOCATION

BRONCO FLATS FEDERAL 7-7



CONSTRUCTION LAYOUT DRAWING 3 OF 5

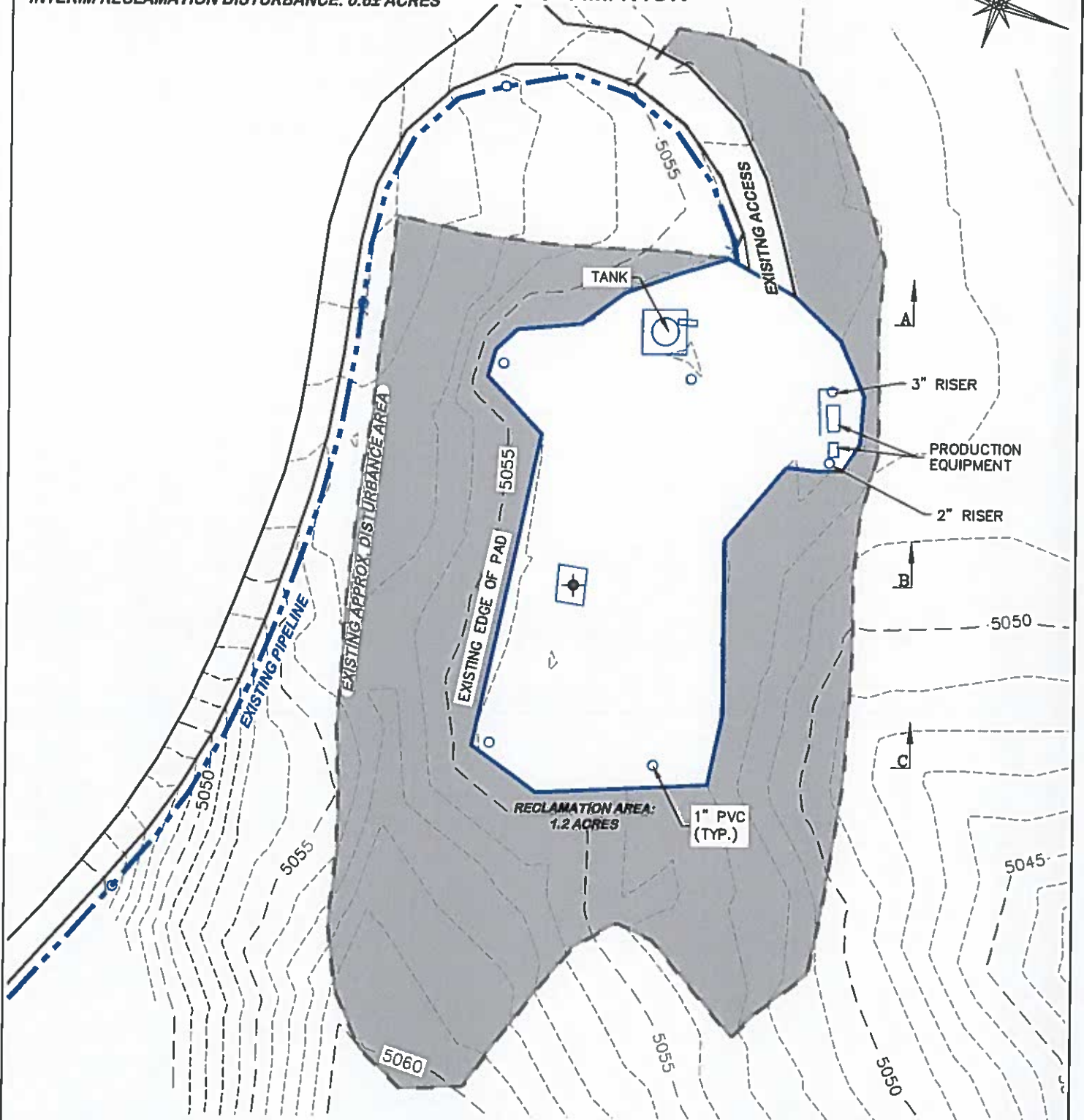
DRG RIFFIN & ASSOCIATES, INC.
 (307) 362-5028 1414 ELK ST., ROCK SPRINGS, WY 82901

DRAWN: 12/7/2018 - TCM	SCALE: 1" = 60'
REVISED: 1/2/2019 - TCM	DRG JOB No. 21891
MISC. REVISIONS	02 RIG

RIG LAYOUT
LARAMIE ENERGY, LLC.
BRONCO FLATS FEDERAL 7-7
SWNE, SECTION 7, T. 9 S., R. 97 W., 6th P.M.,
MESA COUNTY, COLORADO

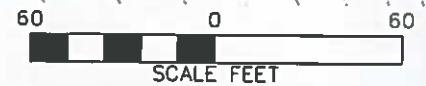
EXISTING APPROX. DISTURBANCE AREA 1.9± ACRES
 EXISTING RECLAMATION AREA: 1.3± ACRES
 INTERIM RECLAMATION DISTURBANCE: 0.6± ACRES

EXISTING RECLAMATION



**BEFORE DIGGING
 CALL FOR
 UTILITY LINE LOCATION**

BRONCO FLATS FEDERAL 7-7

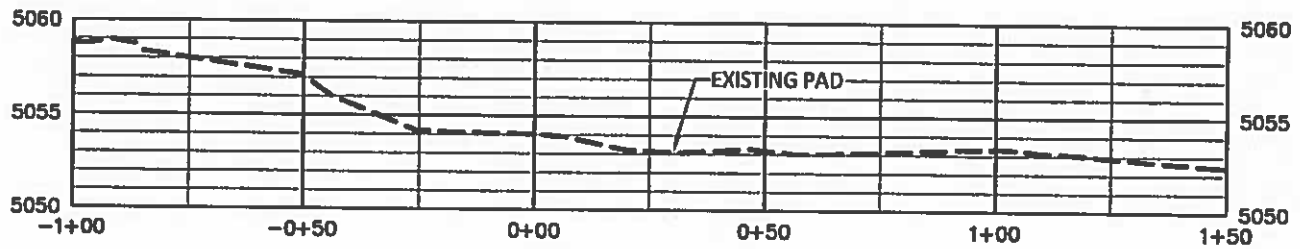


DRG RIFFIN & ASSOCIATES, INC.
 (307) 362-5028 1414 ELK ST., ROCK SPRINGS, WY 82901

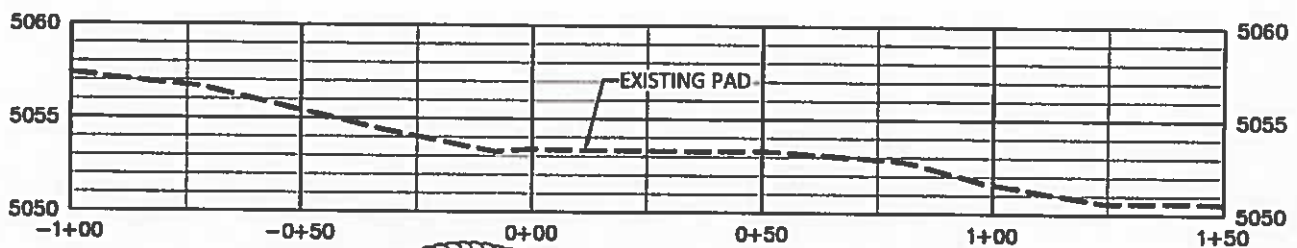
DRAWN: 12/7/2018 - TCM	SCALE: 1" = 60'
REVISED: 1/2/2019 - TCM	DRG JOB No. 21691
MISC. REVISIONS	03 REC

CONSTRUCTION LAYOUT DRAWING 4 OF 5

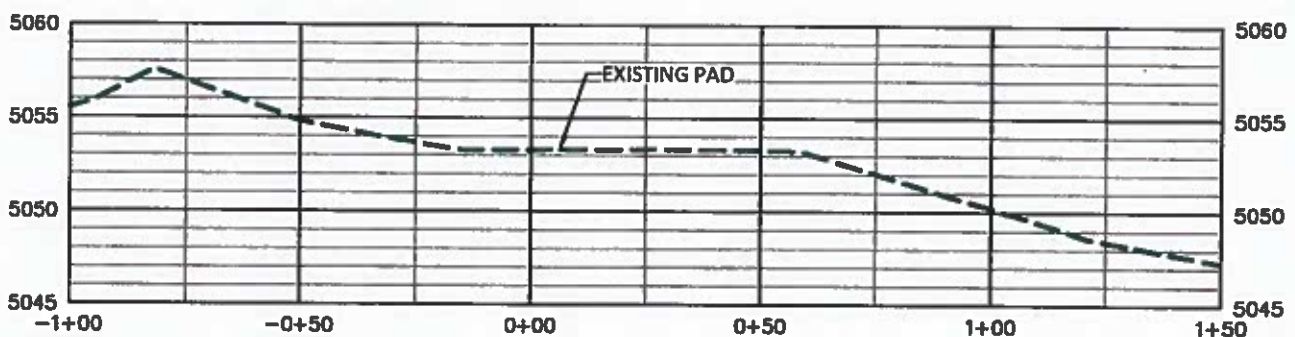
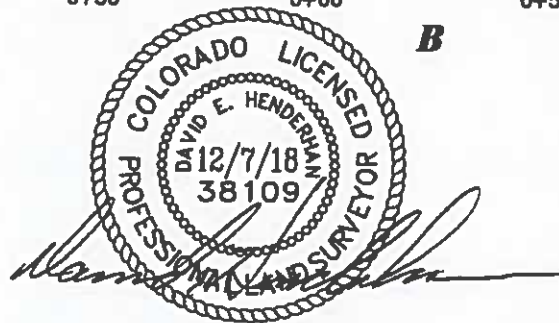
**EXISTING RECLAMATION
 LARAMIE ENERGY, LLC.
 BRONCO FLATS FEDERAL 7-7
 SWNE, SECTION 7, T.9 S., R.97 W., 6th P.M.,
 MESA COUNTY, COLORADO**



A



B



C

BRONCO FLATS FEDERAL 7-7

CONSTRUCTION LAYOUT DRAWING 5 OF 5



DAVID R. GRIFFIN & ASSOCIATES, INC.
1414 ELK ST., ROCK SPRINGS, WY 82901

(307) 362-5028

DRAWN: 12/7/2018 - TCM

SCALE: H - 1" = 40' V - 1" = 10'

REVISED: N/A -

DRG JOB No. 21691

04 XSEC

LARAMIE ENERGY, LLC.
BRONCO FLATS FEDERAL 7-7
SWNE, SECTION 7, T.9 S., R.97 W, 6th P.M.,
MESA COUNTY, COLORADO