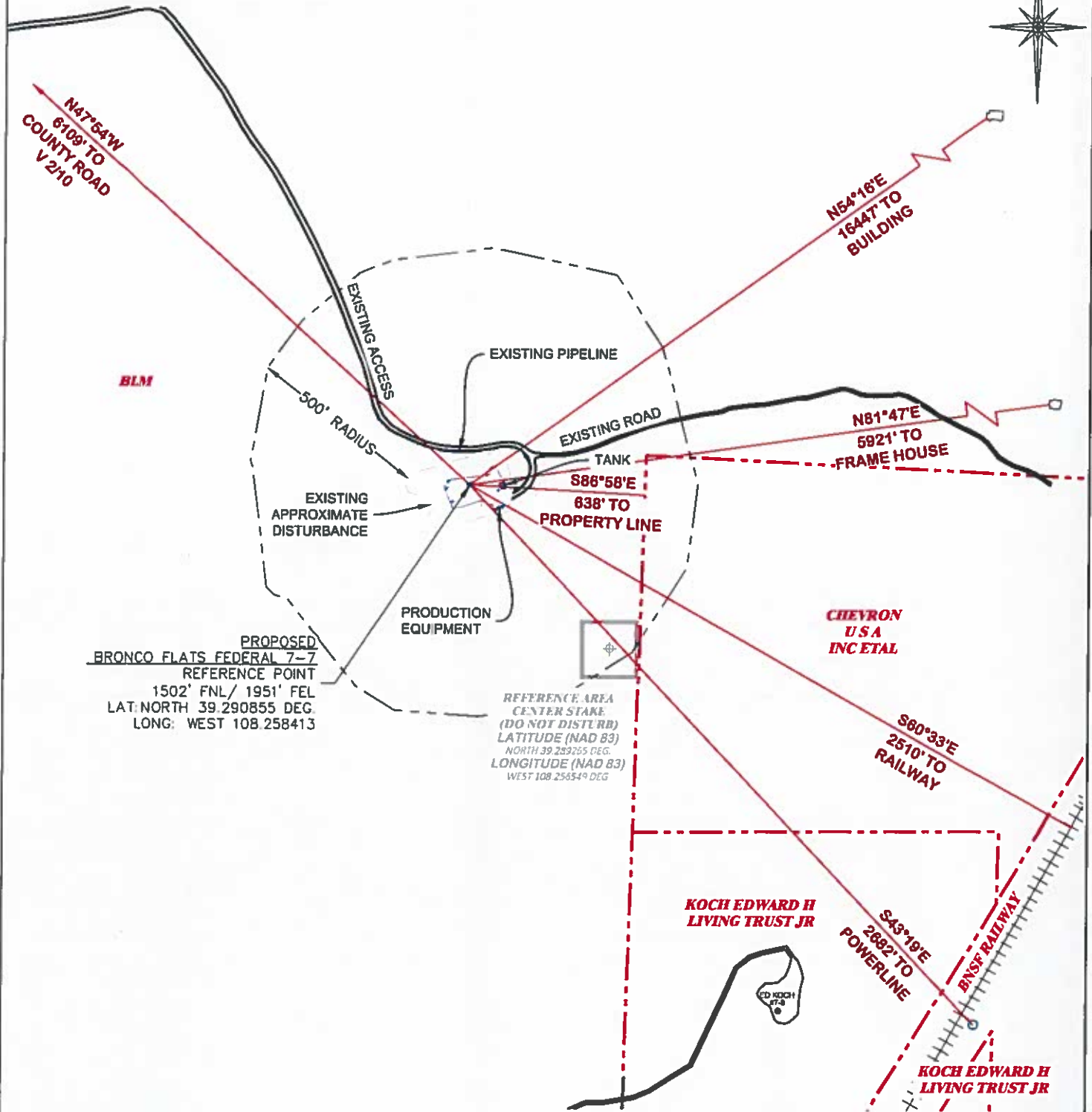
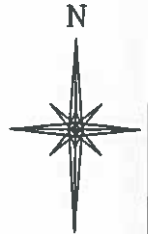


# LOCATION DRAWING

AS-BUILT ELEVATION: 5053.3'  
EXISTING AREA OF DISTURBANCE: ±1.9 ACRES  
APPROXIMATE PAD AREA: ±0.6 ACRES  
DRAINS TO COLORADO RIVER



BEFORE DIGGING  
CALL FOR  
UTILITY LINE LOCATION

BRONCO FLATS FEDERAL 7-7



LOCATION DRAWING

**DRG** RIFFIN & ASSOCIATES, INC.  
(307) 362-5028 1414 ELK ST., ROCK SPRINGS, WY 82901

|                        |                   |
|------------------------|-------------------|
| DRAWN: 12/7/2018 - TCM | SCALE: 1" = 500'  |
| REVISED: N/A -         | DRG JOB No. 21691 |
|                        | 05 LOC DWG        |

LARAMIE ENERGY, LLC.  
BRONCO FLATS FEDERAL 7-7  
SWNE, SECTION 7, T. 9 S., R. 97 W, 6th P.M.,  
MESA COUNTY, COLORADO